

Wileman's BRAZILIAN REVIEW

A Weekly Journal of Trade, Finance Economics and Shipping.

RIO DE JANEIRO
Rua Carlos de Carvalho, 45

ESTABLISHED 1898

(CAIXA POSTAL
P. O. Box) 809

VOL. 29

RIO DE JANEIRO, 7th. DECEMBER 1936

N.º 23

2\$000



REGULAR SAILINGS
BY EXPRESS TURBINE STEAMERS

**ALCANTARA
ASTURIAS**
LARGEST AND FASTEST BRITISH LINERS
TO EUROPE AND RIVER PLATE

FOR PASSAGES AND FURTHER INFORMATION APPLY TO

ROYAL MAIL AGENCIES (BRAZIL) LTD.

Agents: **ROYAL MAIL LINES, LIMITED.**

RIO DE JANEIRO: AVENIDA RIO BRANCO, 51/55 — TEL. 23-2161

ALSO AT SANTOS, SÃO PAULO, BAHIA, PERNAMBUCO, RIO GRANDE, ETC.

The City of Santos Improvements Company, Limited

CAIXA 4 — SANTOS — ESTADO DE SÃO PAULO

GAS DEPARTMENT. — Special coke and tar produced by the continuous carbonization process. Also soft pitch for waterproofing purposes; crude benzol and oils for the manufacture of disinfectants.

WATER DEPARTMENT. — Distribution on the constant supply system. Special cheap rates for industrial supplies. Ships supplied with water of guaranteed purity, at the rate of 150 tons per hour if required.

ELECTRICITY DEPARTMENT. — Installations of any magnitude for Light and Power. Cheap power for long hour consumers. Motor repairs.

TRAMWAYS DEPARTMENT. — Seventy kilometres of rapid electric service. Season tickets with nonstop service. Special terms for large parties; parcel delivery; service to all points. Electric transport of goods and building material at cheap rates. Goods from interior should be despatched "Companhia City, Desvio Saboc".

MOTOR OMNIBUS SERVICES: Town Avenues and Beach.

Telegraphic Address "CIDADE" — Santos

ALL ABOUT COFFEE

(Second and Revised Edition)
By William H. Ukers, M. A.

Editor, The Tea and Coffee Trade Journal; Author, All About Tea, Coffee Merchandising, Coffee in a Nutshell

The Fruit of Thirty Years' Experience with the Trade and Study of the Subject.

FEATURES :

Complete Reference Table of All Coffees — A Coffee Chronology of 562 Dates — A Coffee Thesaurus — A Coffee Bibliography Information on the Chemistry and Pharmacology of Coffee, Coffee Cultivation, Preparation, and Marketing — World Production and consumption of Coffee — History of the Coffee Houses of the Old and New Worlds — 1,000 illustrations — Four Pages in color.

Issued in One Volume of 38 chapters, 832 pages, approximately 500,000 words, covering all the important Historical, Technical, Scientific, Commercial, Social and Artistic phases of the subject.

Bound in Buckram — stamped in gold
Price, \$15, postpaid. Cash with Order

U. S. Currency
Published by

THE TEA COFFEE TRADE JOURNAL CO.
79 Wall Street, New York

Also obtainable from
Wileman's Brazilian Review

THE

"SOUTH AMERICAN JOURNAL"
and Brazil & River Plate Mail

(Established 1863)

This weekly paper has for long been the recognised organ for Latin-American affairs. It covers all aspects, makes a special feature of trade and finance, is free of any Government or other control and deals with Brazil in a fearless but friendly manner, bringing a long experience to bear upon any subject.

Circulates throughout the countries of Latin-America, Great Britain, the United States, Europe, Japan, etc.

The prepaid terms of subscription are
40/- per annum in Great Britain
45/- per annum elsewhere.

Communications respecting advertisements or subscriptions should be addressed to: —

"SOUTH AMERICAN JOURNAL"
52 QUEEN VICTORIA ST, LONDON, E. C. 4
MANAGER, PUBLISHING DEPARTMENT,

Subscription Form: To WILEMAN'S BRAZILIAN REVIEW

P. O. BOX 809 — Rio de Janeiro

Please enter my/our subscription to WILEMAN'S BRAZILIAN REVIEW for one Year beginning for which I/we enclose order

TERMS (POST FREE)

IN BRAZIL RS: 100\$000

ELSEWHERE £3.0.0d.

} — Payable in advance

{ ADVERTISEMENT RATES,
ON REQUEST.

{ SINGLE COPIES RS: 2\$000

The British Export Gazette

GREAT BRITAIN'S LEADING EXPORT JOURNAL

FOUNDED 1892

MERCHANTS, IMPORTERS, and AGENTS in Brazil who are interested in the Trade of Great Britain should subscribe to this old-established and influential publication. It provides its Subscribers with the most exhaustive commercial news service and is the connecting link between British Manufacturers and Merchants in all parts of the world.

The Annual Subscription is 10s, or 25s. for Three Years, which includes unlimited use of its Information and Agency Departments

The British Export Gazette is invaluable to Buyers of British Goods and all who want to represent British firms in Brazil

Head Offices: 76, FINSBURY PAVEMENT, LONDON, E. C. 2

The Commercial Telegram Bureaux



Supply Official Reports and Quotations of all the leading American, European, Brazilian and Indian Markets to the Cotton, Coffee, Grain, Produce, Provision, Petroleum and Sugar Trades of Europe and America: also re-transmit Private Despatches by Cable to multiple addresses in Europe and North and South America.

Subscribers furnished with Intermediate or Closing American Reports at night by special arrangements with London, Liverpool, or Amsterdam offices.
FOR TERMS. &c., APPLY TO CHIEF OFFICE:

COMTELBURO, LIMITED

TOKENHOUSE YARD, LONDON E. C. 2

(open day and night)

Registered Telegraphic Address: "COMTELBURO" Telephone: London Metropolitan 8244 (4 lines)

LONDON: 30 Mincing Lane, E. C. 3.
LIVERPOOL: 7, Rumbold Str. 1983 Centr. (two).
NEW YORK: 66-70 Beaver Street, Hanover 2-4450
AMSTERDAM: Spuistraal 4-3268Z.
HAVRE: Rue Victor Hugo, 136
ANTWERP: Rue des Douze Mois, 19, 11852
PARÁ: Avenida Castilhos França, 71, Caixa Postal 198
CEARA: Rua Major Faundo 680, Caixa Postal 198
PERNAMBUCO: Rua Visc. Itaparica, 207, Caixa 299

BAHIA: Rua Portugal, 16, Caixa 203
VICTORIA: Rua 1.º de Março, 46; Sala 8, C. Postal 40
RIO DE JANEIRO: Av. R. Branco, 33-1.º, C. 266
SANTOS: Rua Cidade de Toledo, 7, Caixa 243
S. PAULO: Rua 3 de Dezembro, 48, 1.º, Caixa 1281
CURITYBA: Av. João Pessoa, 71, 2.º and., C. Postal 79
RIO GRANDE: Rua Riachuelo, 199; Caixa Postal 92
PORTO ALEGRE: Rua Siqueira Campos, 903, C. P. 300
B. AIRES: Bolsa de Comercio, 239, tel. U. T. 3-2340

GAMBIO



TITULOS

Private & Public Titles transacted on all Brazilian markets. Sale of Coffee to the D. N. C., São Paulo & Santos dealers. Editors of the "Revista Financeira Levy", Boletim Commercial, Suplemento Levy (Dailies). Money transactions, Foreign & National on all markets of the world. Agents & Representatives in Rio de Janeiro, Bahia, Porto Alegre, Recife, Pará and all foreign Cities.

STOCK BROKERS

RUA 15 DE NOVEMBRO, 59
SANTOS

CUSTOM HOUSE BROKERAGE OFFICE
Telegrams: "YVEL"

RUA ALVARES PENTEADO, 20
SÃO PAULO

Furness Prince Line



NEW YORK - SOUTH AMERICA

Luxurious accomodation - First class passengers only

RIO — NEW YORK 13 DAYS

SOUTHERN PRINCE

Will Sail 10th. December
For Trinidad and New York

NORTHERN PRINCE

Due From New York 11th. December
For Santos, Montevideo & Buenos Aires

Round trip rates for limited periods considerably reduced

TRIANGULAR TOURS — NEW YORK — EUROPE — BRAZIL — AT SPECIAL RATES

Houlder Brothers & Co. (Brazil) Ltd.

Rua do Commercio, 35 — SANTOS

Tel. 2001 & 3728

Avenida Rio Branco, 63-67, 1st Floor — Rio de Janeiro

Tel. 23-0754 and 23-0588

LAMPOR & HOLT LINE LIMITED

BRAZIL SERVICE

FROM GLASGOW AND LIVERPOOL to: Bahia, Rio de Janeiro, Santos, Rio Grande do Sul, Pelotas & Porto Alegre. From New York and South Atlantic Ports to Brazil and the River Plate

SAILINGS	From Glasgow	From Liverpool	From New York	Due Rio	Due Santos
BONHEUR	—	1st Dec.	—	21st Dec. 1936.	23rd Dec. 1936.
BRONTE	5th Dec.	12th Dec.	—	2nd Jan.	4th Jan.
MILLAIS	—	—	12th Dec.	3rd Jan.	5th Jan.
LEIGHTON	2nd Jan.	9th Jan.	—	30th Jan.	1st Feb.
NASMYTH	—	23rd Jan.	—	12th Feb.	14th Feb.
BROWNING	30th Jan.	6th Feb.	—	27th Feb.	1st Mar.
BALZAC	—	20th Feb.	—	13th Mar.	15th Mar.

* For Rio and Santos only

HOMeward

BIELA
BROWNING
BALZAC
LASSELL
SWINBURNE

SAILINGS

leaves Santos 12th Dec. Rio 14th Dec. for New York.
leaves Rio 11th Dec. for Liverpool.
leaves Santos about 16th Dec. for Liverpool.
leaves Santos about 18th Jan. 1936 for Liverpool.
leaves Santos and Rio middle Jan. 1936 for New York.

Cargo taken on through Bills of Lading, via Rio de Janeiro, to Aracajú, Victoria, Antonina, Paranaguá, São Francisco and Santa Catharina

All steamers, outwards and homewards, have accomodation available for Saloon Passengers at economic rates

Santos:
F. S. HAMPSHIRE & Co. Ltd.
Bahia:
F. STEVENSON & Co. Ltd.
Pernambuco:
WILLIAMS & Co.

Apply to: —
Lampor & Holt Line Limited
AV. RIO BRANCO, 46-4.º and.
Tel. 23-1980
RIO DE JANEIRO

S. Paulo:
F. S. HAMPSHIRE & Co. Ltd.
Buenos Aires:
LAMPOR & HOLT LINE Ltd.
Montevideo:
M. REAL AZUA

Wileman's Brazilian Review

A WEEKLY JOURNAL OF TRADE, FINANCE, ECONOMICS AND SHIPPING

VOL. 29

RIO DE JANEIRO, 7th. DECEMBER 1936

N.º 23

Wileman's Brazilian Review

Established 1898

OFFICES: RUA CARLOS DE CARVALHO N.º 45
RIO DE JANEIRO

Telephone: 22-9781 - Caixa do Correio (P.O. Box) 809
Tel. Address: "REVIEW", Riojaneiro.

Redactor Responsavel: V. S. Coelho.
Tel. 22-9781 — Caixa do Correio (P. O. Box) 809
Redac. e Administração: R. Carlos de Carvalho, 45

Subscriptions (Payable in Advance): —
Brazil, 100\$000 per annum. Abroad £3 per annum.
Separate copies 2\$000. Back Number 2\$500 per copy.

ADVERTISING RATES ON APPLICATION

AGENTS:

NEW YORK: — "The Tea and Coffee Trade Journal"
79, Wall Street.
COPENHAGEN: — "The Scandinavian Shipping Gazette",
38 Vestre Boulevard.

Notice: — The Editor is not responsible for Correspondence or Articles signed with the writer's name or initials, or with a pseudonym, or that are marked "Communicated". The Editor must likewise not necessarily be held in agreement with the views therein contained or with the mode of expression.

Original articles submitted for publication must be considered, unless otherwise arranged, exclusive to and the sole property of the Review.

In accordance with the Brazilian Press Law, no correspondence or contribution will be published in this Review unless authenticated by the date, name, and address of the contributor, though not necessarily for publication.

knowledging receipt of a communication from the Council dealing with the freeing of exchange on corned pork; telegram from Derzi and Co, exporters of Matte "Flor do Brasil", of Ponta Porã, Matto Grosso enquiring whether direct sales of Matte to the Argentine are subject to the tax on mercantile sales; telegram from the Frigorificos Nacionaes Sul Brasileiros of Porto Alegre thanking the Council for the freeing of exchange on corned pork, which has materially assisted and increased the exports of this product from Brazil; communication from the Brazilian Legation in Stockholm enclosing copies of two letters sent to the Minister of Foreign Affairs dealing respectively with Brazilian bananas in Sweden and a Swedish firm who wish to deal directly with exporters of coffee in Santos and Rio; letter from the Canadian Trade Commissioner of Rio de Janeiro advising that the Onyx Oil and Chemical Co, Ltd. were interested in the import of castor oil nuts; Communication from the Chamber of Commercial Expansion of the State of Ceará enclosing copies of the minutes of their 7th meeting which took place on the 5th of November; telegram from the Governors of the States of Amazonas, Rio Grande do Sul, Goyaz and Paraná thanking the Council for the information regarding the reduction in the quota of official exchange on exportations of wool; telegram from the Governors of the State of Matto Grosso and Piauhly acknowledging receipt of a telegram from the Council referring to the enquiry into the possibilities of national industrial expansion; telegram from Sr. Ariosto Pinto thanking the Council for having distributed copies of the report on the case of Sr. Nicollau Costa, cotton exporter; communication from the Ministry of Transport and Public Works passing on information given to that Ministry by the National Department of Ports and Navigation and the Central do Brazil Railway regarding the transport of iron and manganese from the State of Minas Geraes, verbal communication from the Ministry of Agriculture regarding the expert inspection and control of cotton in European ports; letter from Dr. R. A. Ehrlich, a Brazilian living in Brussels and representative in Belgium of A. Triefus of London advising that the Belgian Government had decided to classify Brazilian coloured stones as "Precious stones, unmounted", when they will be exempt from duty; letter from the Industrial and Textile Mill Owners' Syndicate of the State of S. Paulo referring to the dumping of wollen yarns, thus threatening Brazilian weaving; telegram from the Governor of S. Paulo thanking the Council for their advice regarding the reduction in the quota of official exchange on

Notes

The weekly session of the Federal Council of Overseas Trade was held on Monday last under the Presidency of Minister Sebastião Sampaio. Councillors João Maria de Lacerda, Euvaldo Lodi, Alberto Boavista, Raul Leite, Arthur de Carvalho, and Victor Viana were present, also Technical Advisors Léo de Affonseca, Valentim Bouças, Franklin de Almeida and Misael Penna.

The new Councillor Dr. Luiz Piza Sobrinho was welcomed by the Executive Director, who expressed the pleasure of the Council in being able to count on the collaboration of the President of the D. N. C.

The minutes of the 121st session, having been read and duly approved, the weekly subject matter was read, which included; Letter from the Ministry of Finance ac-

WILEMAN'S BRAZILIAN REVIEW

Circulates in 33 different countries

THE STANDARD PUBLICATION FOR BRAZILIAN STATISTICS

quoted by Government Departments
the world over.

MAILS

AIR-MAIL SERVICES

STEAMER SERVICES

The hours refer to the closing times of mails at the Agencies.
For connecting services consult the Agencies

Sailing dates checked with Steamship Agencies on Friday
previous to printing.

DEPARTURES

Day	Service	To	Phone
Monday	5 pm Panair	Belem	22-0712
Tuesday	6 pm Air France	B. A.	23-0010
Wed'day	5 pm Panair	Fortaleza	22-0712
Thursday	2 pm Condor	Europe	23-1970
do	5 pm Panair	Manaos & U. S. A.	22-0712
do	5 pm do	B. A.	22-0712
do	6 pm Condor	P. Alegre	23-1970
Friday	5 pm Panair	do	22-0712
do	5 pm Condor	Belem	23-1970
Saturday	6 pm do	B. A.	23-1970
do	6 pm do	Cuyabá & Bolivia	23-1970
do	6 pm Air France	Europe	23-0010
Sunday	5 pm Panair	U. S. A.	22-0712
do	6 pm Condor	P. Alegre	23-1970

ARRIVALS:

Day	Service	From	Phone
Monday	pm Panair	P. Alegre	22-0712
do	pm do	U. S. A.	22-0712
Tuesday	pm Air France	Europe	23-0010
Wed'day	pm Condor	P. Alegre	23-1970
Thursday	pm Panair	U. S. A.	22-0712
do	pm Condor	B. A.	23-1970
Friday	pm Panair	Manaos	22-0712
do	pm Condor	Belem	23-1970
Saturday	pm do	P. Alegre	23-1970
Sunday	pm Air France	B. A.	23-0010
do	pm Panair	Fortaleza	22-0712
do	pm do	B. A.	22-0712
do	pm Condor	Europe	23-1970

TO EUROPE

Dep.	Vessel	Destination	Phone
9	General Osorio	Hamburg	23-5945
11	Augustus	Genoa	23-5840
15	H. Patriot	London	23-2161
18	Cap. Arcona	Hamburg	23-5945
19	Salland	Amsterdam	22-9900
20	Florida	Genoa	23-2930
24	Monte Pascoal	Hamburg	23-5945
27	Arlanza	S'mpton	23-2161
29	Almeda Star	London	23-5988
2	Oceania	Trieste	23-5840
5	Waterland	Amsterdam	22-9900
10	Almanzora	S'mpton	23-2161

FROM EUROPE

Arrives	Vessel	From	Phone
8	Massilia	Bordeaux	23-1965
8	Cap Arcona	Hamburg	23-5945
14	Arlanza	S'mpton	23-2161
16	Monte Olivia	Hamburg	23-5945
21	Avila Star	London	23-5988
21	H. Chieftain	London	23-2161

TO U. S. A.

Dep.	Vessel	Destination	Phone
10	Southern Prince	New York	23-0754
17	Western World	New York	23-2000
19	Delmar	NewOrleans	23-4134

FROM U. S. A.

Arrives	Vessel	From	Phone
11	Southern Prince	New York	23-0754
16	Del Norte	NewOrleans	23-4134
18	Southern Cross	New York	23-2000
25	Eastern Prince	New York	23-0754

TO BUENOS AIRES

Dep.	Vessel	Phone
8	Massilia	23-1965
8	Cap Arcona	23-5945
14	Arlanza	23-2161
16	Monte Olivia	23-5945
21	Avila Star	23-5988
21	H. Chieftain	23-2161

FROM BUENOS AIRES

Arrives	Vessel	Phone
8	Alcantara	23-2161
9	General Osorio	23-5945
11	Augustus	23-5840
15	H. Patriot	23-2161
18	Cap Arcona	23-5945
20	Florida	23-2930
24	Monte Pascoal	23-5945

TO SOUTH AFRICAN & JAPAN

Dep.	Vessel	Destination	Phone
17	Buenos Aires Maru'		23-5988

FROM SOUTH AFRICA & JAPAN

Arrives	Vessel	From	Phone
26	Santos Maru'	Kobe	23-5988

RIO CAPE LINE LTD.

Direct Cargo Service from Rio de Janeiro
and Santos to
Cape Town, Mossel Bay, Algoa Bay, East
London, Durban, and Lourenço Marques

THE JAPANESE STEAMER

Atlas Marú

(Under Contract)

Sailing 26th December

Followed by

Arabia Marú

Sailing 8th January

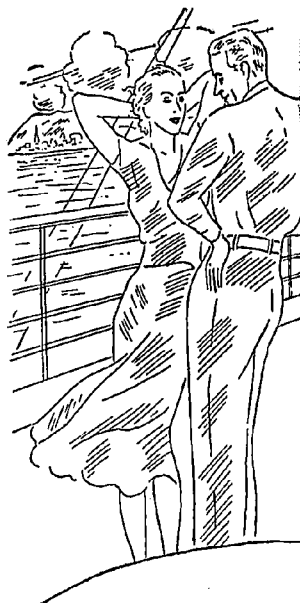
For further particulars apply to:
HOULDER BROTHERS & Co. (BRAZIL) LTD.

Agents for the Rio Cape Line, Ltd.

AVENIDA RIO BRANCO, 63/67 1st. floor

Telephones 23-0754 and 23-0588

RIO DE JANEIRO



Flower Garden of the Atlantic

Madeira the magnificent, picturesque island of lovely flowers and beautiful mountain vistas, is one of the five interesting ports of call you will delight to see when you travel the Blue Star way.

NORTHBOUND

Andalucia Star	Dec. 7
Almeda Star	Dec. 29

SOUTHBOUND

Almeda Star	Dec. 7
Avila Star	Dec. 21

Blue Star Line

★ THE LINE OF COMFORT - SERVICE - COURTESY ★

exports; telegram from the Chamber of Commercial Expansion of Ceara protesting against the approval of the project of the maritime freights law with various amendments made by the Senate and Chamber of Deputies, which were contradictory to the original project; copy of a communication from the Superintendent of the Port Company of Rio de Janeiro to the Minister of Traffic and Public Works dealing with the discharge of coal for the Central of Brazil Railway.

Sr. Raul Leite spoke on the subject matter and intimated to the Syndicate of Agriculturists of Santos that the Council, having duly considered their request, had communicated with the Minister of Traffic, putting before him all the difficulties of railroad transport with which banana exporters were faced, to the detriment of the industry. The Minister of Transport is holding an enquiry the result of which will be communicated direct to the Syndicate and at the same time the Secretary of the Council will be consulted to ascertain that the steps decided upon will meet the case.

Referring to the difficulties of transport, Sr. Piza Sobrinho stated that this was a serious problem and was damaging all branches of industry and agriculture in São Paulo and in most States of Brazil. As an example he cited a recent case of 500,000 dozen heads of São Paulo lettuce which had rotted owing to the difficulty in transporting them to Rio.

LONDON FINANCIAL POSITION

NOVEMBER, 27, 1936

Among the satisfactory developments of the past week news that a new trade agreement has been concluded between Argentine and Great Britain and according to rumours said to circulate in Buenos Ayres, there may be an important adjustment of the exchange regime when the terms of the pact are definitely announced. Anticipations in this matter may have contributed to this week's firmness of Argentine rails, though the latest traffics were considered satisfactory, and it is understood that the current season's harvests are assured. Other markets have been considerably affected by political fears, chiefly in connection with the civil war in Spain and the recognition of the head of the insurgents there by Italy and Germany. The announcement of a pact between the latter country and Japan also aroused some misgiving. Ostensibly this pact is for the purpose of saving Europe from Communism, but it is generally believed that there is more behind the agreement. There were indications of strained relations between Russia and Germany because the Soviet had passed the death sentence on a German subject accused of acts of sabotage, etc., in Russia. Fortunately the tension was relieved by the commutation of the sentence to one of ten years' penal servitude.

For a time the political scares had more effect upon the security markets because Paris indulged in one of its periodical attacks of nerves, and New York sent weaker

advices, influenced in turn by alarm about the European political situation. Selling on local account as not heavy, and a subsequent recovery was assisted by various satisfactory company announcements of increased profits and increased dividends, indicating the great prosperity of the country's internal trade. Moreover, the trend of commodity values is still upward, especially in the case of wheat. There has been a good demand for shares of Argentine land companies, induced by the improved results already announced and companies, induced by the improved results already announced and expectations of still bigger profits in the future owing to the rise in prices of products.

The report of the Bank of London & South America reflects the effect of the acquisition of the "Anglo-South", the deposits and other important balance sheet items showing a considerable increase, while there is also a substantial expansion in the net profits. The whole of the depreciation on capital employed abroad has been written off out of the hidden reserves. A larger sum is placed to contingency reserve, and partly because of this the margin of revenue behind the 3 per cent dividend (announced last week) is not much larger than before. In the current year the new capital issued to acquire the "Anglo-South" will rank for dividend. Among the movements in Argentine Rails is a rather sharp recovery in Cordoba (Central 4½ per cent 1st Debenture, but whether this portends a resumption of negotiations for the Government acquisition of the system it is impossible to say. At the recent annual meeting the Chairman stated that the position in this respect was the same as a year ago.

Brazilian Government bonds are well maintained, with some inquiry for Rio City & State issues, and the various San Paulo State loans. European Government bonds have naturally given way, though they have rallied from the worst. The monetary situation here is virtually unaltered, and a rather sharp fall in British Government and other important gilt-edged securities has been partly made good. New capital issues for Industrial undertakings are still fairly numerous, and in most cases they are well received.

Among previously depressed industries now showing signs of revival is the Lancashire Cotton trade. It is regrettable, therefore, that labour trouble in this field is threatened. Holland and Switzerland have intimated that they will join the monetary agreement initiated by Gt. Britain, France and America, and as Belgium had already done so a six-Power understanding is now in force, thus strengthening the prospects of exchange stability and consequently of a restoration of international trade. The Swiss Bank rate has been reduced to 1½ per cent, making it the lowest, figure, in Europe, and equalling that of the Federal Reserve Bank of New York.

Among recent market features is a severe fall in Mexican Eagle Oil shares, due partly to indications of more serious labour troubles on the field, but perhaps more to a proposed Government measure for expropriation of properties. The effect upon sentiment was the more pronounced as a considerable bull position had been built up in the shares on rumours that the company would pay a larger dividend on the ordinary stock.

IRMÃOS ARAUJO
Typewriters, Calculating and Addressing
Machines

GENERAL OVERHAULING & REPAIRING
WORK GUARANTEED ONE YEAR
STEEL FURNITURE — FOR OFFICES
RUA SÃO PEDRO, 57 — TEL. 23-3319

THIRTY FIVE YEARS AGO

EXTRACTS FROM THE BRAZILIAN REVIEW OF
DECEMBER 10th. 1901

Local items. Per British steamer "Cyrene" there arrived last Tuesday some of the nickel coins of 100, 200 and 400 reis struck at the Birmingham mint in execution of the contract with Messrs. Haupt, Biehn & Co.

— The aggregate weight of the nickel coins is 15½ tons and are packed in 310 kegs. Their nominal value is about 3,000,000\$. When these coins are put into circulation, an equivalent sum in paper money will be withdrawn and destroyed.

Rio Grande do Sul. At the Xarqueadas work has commenced earlier than it did last year. At Pelotas, up to the 26th. ult. 1,775 head of cattle had been sold. For the oxen weighing 5 arrobas (60 lbs) prices varying from 67\$ to 70\$ a head had been paid, and for cows from 36\$ to 40\$. At Bagé up to the 27 ult. 1,300 head of cattle had been sold. The establishment of José Nunes Ribeiro Magalhães has been thoroughly renovated. Among the improvements introduced are 200 electric lamps. The first shipment of the new carne secca from Pelotas was made on the 27 ult. on the barge "Tempestade" from which it would be transferred at Rio Grande and Porto Alegre.

EXCHANGE:

£ 20\$210
\$ 4\$163

Coffee loaded during the crop to December 10th. —
9.851.020 bags.

**HAMBURG - SUEDAMERIKANISCHE
DAMPFSCHIFFFAHRTS
GESELLSCHAFT**

Regular service with the known, luxurious, express steamer "Cap Arcona", between Hamburg, Boulogne s./mer, Plymouth, Vigo, Lisbon, Rio de Janeiro, Santos, Montevidéo, Buenos Aires and vice-versa.

The s. s. "Cap Arcona" is the fastest ship to North-Europe, performing the voyage from Rio to Lisbon in 9 days, to Plymouth and Boulogne s.m. in 11 days and to Hamburg in 12 days

NEXT SAILINGS FOR EUROPE

GENERAL OSORIO	9 Dec.
CAP ARCONA	18 Dec.
VIGO	18 Dec.
MONTE PASCOAL	24 Dec.
MADRID	29 Dec.
MONTE OLIVA	5 Jan.
CAP NORTE	13 Jan.
ESPAÑA	22 Jan.
GENERAL ARTIGAS	27 Jan.

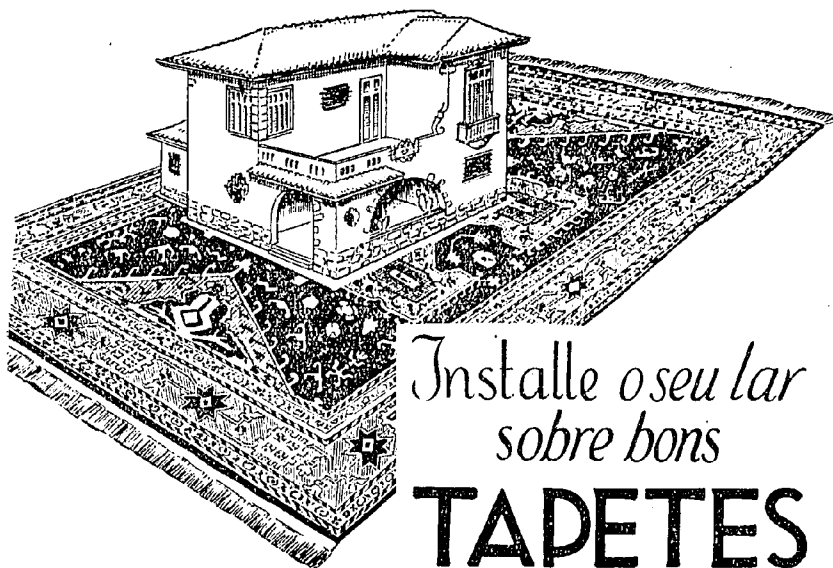
Regular services with modern and full powered cargo steamers between Hamburg, Antwerp, Portugal, Brasil and River Plate Ports.

For further particulars apply to the agents:

THEODOR WILLE & CIA. LTDA.

RIO DE JANEIRO
SANTOS VICTORIA S. PAULO
79, Avenida Rio Branco, 79

MAPPIN STORES
SOCIÉDADE ANÔNIMA INGLEZA



FOR REAL HOME
COMFORT

See that every room
has its appropriate
carpet

WE HAVE
THE FINEST
STOCK OF CARPETS
IN BRAZIL!

*Installe o seu lar
sobre bons*
TAPETES

MAPPIN STORES SÃO PAULO - Praça Patriarcha 2
R 10 - Praia Botafogo 360

LONDON PRODUCE NOTES

LONDON, Nov. 27 1936

SUGAR — The rising trend of commodity prices was accentuated during the past week, but there were one of two exceptions, the most important being sugar. Even in this case the undertone was steady, for despite the absence of buying of raws by refiners, the futures market showed very little change in values from the reserve of first hand sellers of raws, especially in the case of Cuban shippers. Unfortunately the demand for refined sorts was very quiet, and until this section of the trade brightens up, there is no inducement for refiners to add materially to their stocks of raws. The statistical position of the commodity presents a much better picture, the visible supplies being estimated at just under 3,000,000 tons against over 4,000,000 tons a year ago.

RUBBER — After a quiet opening the market for plantation rubber became firm on an increasing demand from the trade. Spot and near delivery was wanted by the Continent, while the United States operators were bidding for Dec/Jan and Jan/Feb. shipment direct from the East to New York. Prices are now at their highest since 1929. The rising tide of consumption and the increase in the price which has taken place during the last month or six weeks, is giving rise to some apprehension as to the possibility of the International Rubber Regulation Committee revising their decision as to the export quota for next year. The next meeting is on December 15, and there is likely to be some pressure from American interests for a bigger release for January/June next year than the 70 per cent fixed a short while ago. The motor trade of the U. S. A. for the ten months of this year, shows an increase in production of 11½ per cent over the corresponding period of 1935, while in England, the Society of

Motor Manufacturers and Traders' figures for their year ended Sept 30 last, reports a production of 461,947 vehicles, an increase of 58,227 over the previous season.

TEA — There was a better demand at the tea auctions and the medium quality Indian sorts were fractionally dearer. The Ceylon offerings sold quickly with price movements chiefly in sellers' favour except in the case of fine teas with light liquor which were irregular and easier. The International Tea Committee are issuing over the week end their decision as to the export quota for the season from April 1, 1937 to March 31, 1938. The statistical position is better, for the United Kingdom stock is now down to more reasonable proportions but is still above normal. Consumption however, is disappointing showing a slight decline on last year, but in view of the fact that the Committee have to consider the supply position that will exist eighteen months ahead, a slight increase in the quota would not be surprising.

COCOA — The cocoa market is booming. American manufacturers are still keen buyers, and the December tenders on the futures market are expected to be quickly absorbed. Prices on the GOLD Coast are ruling above the London parity and sellers are difficult to deal with.



"King George IV"
Old Scotch Whisky

Good fermented, Accra, Jan/March shipment was bid for at 46/3 per 50 kilos, basis c. i. f. Continent, showing a rise of 4/- on the week.

COFFEE — The offerings at the London coffee auctions were of moderate quality but sold fairly well at steady prices.

JUTE — Raw jute after a little easiness became steadier on higher Calcutta advices.

TIMBER — There was a quiet trade in mahogany at firm prices. American hardwoods were dearer and c. i. f. prices have steadily advanced. Consumption in United States home markets has increased and consequently the percentage of production seeking an Outlet in Europe has decreased. Japan seems to be oversold and can only offer for shipment many months ahead. The Continent of Europe has offered with less freedom and more firmness in prices of oak lumber.

FRUIT — A small supply of oranges from Almeria, Spain were received last week, the colour and quality being excellent; 240, sold at 17s.6d. to 22s.6d.; 300, 19s. to 22s.6d.; 390, 18s. to 21s.; 504, 18s., to 24s.6d.; Brazilian oranges met a firm market with 126's, sold at 10s.3d. to 11s.9d.; 150, 12s. to 14s.; 176, 13s.3d. to 14s.6d.; 200, 15s. to 15s.6d. 216, 15s.9d. to 16s.3d.; 226, 16s.6d.; 252, 17s.9d. to 18s.3d.; 288, 18s.9d. to 19s.3d.; 324, 17s.9d. to 18s.3d.; 360, 16s. to 16s.6d. Bananas; Canary 10s. to 16s. per crate; Brazilian and Jamaican 6s.6d. to 7s. per box. Imports last week from Brazil included 13,000 bunches of bananas and 30,000 boxes of oranges.

HIDES — The market was firmer with a large line of B. A. Americanos sold at 8½d, but there are second-hand sellers here at 7½d. to 7½d.; B. A. Becerros realised 8¼d.; B. A. Anchos 6¾d.; and Sierra Cordobas at 8½d. to 9d. per lb. Other sales included dry Mollendos at 8½d.; dry Bahias at 7½d.; salted Barretos at 4½d., and Mendes seconds at 3½d. per lb. African hides were in short supply and 8½d. was asked for dry first Capes.

RUBBER

The Movement of Rubber in the port, of Pará during week ending Nov. 28th. 1936 was as follows:

Stock on November 21st. 1936 5.733.796
 Entries, during week November 28th. 1936 237.672

Available 5.971.468

Clearances during week:

T Europe	200	
To the U. S.	301.838	
To others ports	23.356	
To Japan	8.126	335.320

Stoc on November 28th. 1936 5.636.148

Spot Rubber was quoted at Pará on November 28th. 1936 as follows, per kilo:

Island	6\$300
Sertão Fine	3\$200
Sernamby Island	4\$600
Sernamby Sertão	3\$000
Caucho	3\$400

DELTA LINE

"FLOATING BUNGALOWS"

Owned and Operated by

Mississippi Shipping Co. Inc

RIO to NEW ORLEANS in 18 days
 With one stop at Victoria

Passengers — Mail — Freight

NEXT SAILINGS:

Southbound

"DELNORTE"	Dec. 16 1936
"DELMUNDO"	Jan. 6 1937

Northbound

"DELMAR"	Dec. 14 1936
"DELVALLE"	Dec. 26 1936

For further particulars apply to

American Steamship Agencies Co. Inc.

Rua da Quitanda, 202 Rua 15 de Novembro, 176
 RIO DE JANEIRO SANTOS

Or at our General Passenger Agents

Serviço Int. de Viagens G. BERNSTORFF

American Republics Line

C. H. SPRAGUE & SON, Inc.

BOSTON, Mass.

Managing Agent

UNITED STATES MARITIME COMMISSION

Regular Cargo Steamer Service
 between

THE ATLANTIC COAST PORTS
 of the United States

BRAZIL and the RIVER PLATE
 General Agents for Brazil

American Steamship Agencies Co. Inc.

Rua 15 de Novembro. 176 Rua da Quitanda, 202
 Santos Rio de Janeiro

Cable Address: "Amagencies"

EXCHANGE

OFFICIAL MARKET RATES

Rio de Janeiro	Buy	Sell	Sell
	1936 Dec. 3rd	1936 Dec. 3rd	1936 Nov. 27th.
London	55.650	—	—
New York	11.350	—	—
Paris	525	—	—
Berlin	3.520	—	—
Brussels	3.915	—	—
Buenos Aires	3.160	—	—
Lisbon	—	—	—
Madrid	—	—	—
Milan	—	—	—
Montevideo	6.140	—	—
Zurich	2.605	—	—
Amsterdam	—	—	—

FREE MARKET RATES

Rio de Janeiro	Buy	Sell	Sell
	1936 Dec. 3rd	1936 Dec. 3rd	1936 Nov. 27th.
London	—	82.900	82.800
New York	—	16.910	16.920
Paris	—	789	789
Berlin	—	5.300	15.300
Brussels	—	2.865	2.870
Buenos Aires	—	4.880	4.720
Lisbon	—	757	756
Madrid	—	—	—
Milan	—	—	—
Montevideo	—	9.250	9.200
Zurich	—	3.890	3.895
Amsterdam	—	9.200	9.170

LONDON RATES

London on:—	1936		1936	
	Dec. 3rd		Nov. 27th.	
New York Dollar	4.90%	4.89%	—	—
Paris Franc	105½	105½	—	—
Berlin Mark	12.18	12.18	—	—
Amsterdam Florin	9.01	9.03	—	—
Brussels Belga	28.98	28.98	—	—
Berne Franc	21.34	21.31	—	—
Lisbon Escudo	110¼	110¼	—	—
Madrid Peseta	—	—	—	—
Genoa Lira	93.12	93.00	—	—

OSWALDO ARAGÃO DA SILVEIRA

Official Exchange & Share Broker

G. FRASER
E. SAUTTER

RUA DA CANDELARIA, 28-2.º andar

Tel.: 23-1033-1034 23-5630-5995

P. O. Box 210

Telegraphic Address "FRASER"

RIO DE JANEIRO

Casa Bancaria Moneró

AV. RIO BRANCO, 49 — RIO — Phones 23 (0074)
(0174)

The most important concern for exchange of
any currency.

Drafts at the most favourable rates on all countries.

Correspondents throughout the world.

F. MONERÓ & CIA. LTDA.

cables: MONERO Peterson Int. Code 3rd. ed.

MONEY MARKET

DISCOUNT RATES

	1936		1936	
	Dec. 3rd		Nov. 27th.	
Bank of England	2%	2%	—	—
" France	3½%	3½%	—	—
" Italy	5%	5%	—	—
" Spain	6%	6%	—	—
" Germany	4%	4%	—	—
London Market	9/16%	9/16	—	—
N/York Market	3/16%	3/16%	—	—

RATES FOR NOTES

	Buy	Sell	Sell
	1936 Dec. 3rd.	1936 Dec. 3rd.	1936 Nov. 27th.
£ Sterling	82.300	83.000	83.000
\$ U. S. A.	16.800	17.000	17.000
\$ Canadá	16.400	17.000	17.000
Franc (France)	775	790	792
Franc (Belgium)	550	570	570
Franc (Swiss)	3.700	3.850	3.850
Mark (German)	—	—	3.900
Mark (Finnish)	—	—	—
Crown (C. Slovak)	540	570	—
Crown (Denmark)	3.600	3.700	3.700
Crown (Sweden)	4.150	4.250	4.250
Crown (Norway)	4.050	—	4.150
Dinar (Yugoslavia)	—	4.150	—
Escudo (Portugal)	755	—	765
Florim (Holland)	8.700	—	9.000
Lei (Rumania)	—	9.000	—
Lira (Italy)	800	—	870
Peseta (Spain)	—	860	—
Peso (Argentine)	4.800	—	4.730
Peso (Bolivia)	—	4.900	—
Peso (Chile)	550	—	600
Peso (Paraguay)	—	600	—
Peso (Uruguay)	8.800	9.100	9.100

FREE MARKET OPENING RATES OF BANK OF LONDON & SOUTH AMERICA LTD.

	£	\$
Nov. 28th.	83.000	16.960
" 30th.	83.000	16.950
Dec. 1st.	83.200	16.950
" 2nd.	83.100	16.940
" 3rd.	83.000	16.920
" 4th.	—	Holiday

THE STOCK MARKET

Thursday 3rd. December, 1936

	Sell	Buy
Reajustamento c/2		
Coupons	775\$	765\$
Ditto, c/4 coupon . . .	840\$	836\$
Ditto, c/5 coupon . . .	—	—
Uniformisadas	—	—
Sundry issues nom.	—	—
Ditto, to bearer	772\$	770\$
Ferrovias R a i l -		
ways Bonds	1:005\$	1:000\$
Treasury Obligation		
(1921)	—	1:010\$
Ditto, 1932	—	1:025\$
Ditto, 1930	1:004\$	1:002\$
Rio, 100\$ 4%	112\$	110\$
Ditto, 1:000\$ 8%	—	810\$
O Minas 1:000\$ 9%	860\$	855\$
Ditto, 7%	728\$	725\$
Ditto, 200\$ 5%	160\$	159\$5
Ditto, 1:000\$ 5% nom	—	625\$
Ditto, 1:00\$ 5% bearer	610\$	—
Municipal Loan 6%		
1906 bearer	—	138\$
Ditto, 1904, £ 20,		
bearer	—	418\$
Ditto, nom.	—	400\$
Ditto, 1914	140\$	—
Ditto, 1917	138\$5	138\$
Ditto, 1920 bearer	138\$	—
Ditto, dec. 3, 264	160\$	159\$
Ditto, dec. 1:550\$ 7%	—	155\$
Ditto, 1, 999	—	154\$
Ditto, 2093 8%	—	190\$
Ditto, 1948 7%	—	—
Dec. 1933 bearer	—	191\$
Dec. 1931 bearer	166\$	164\$
Dec. 1, 535 bearer	162\$	160\$
Ditto, 1, 622	155\$	151\$
Ditto, 2, 339 7%	160\$	—
Bello Horizonte	—	730\$
Petropolis 200\$ (1918)	177\$	—
Porto Alegre 500\$ 8%	470\$	435\$
Esp. Santo 1:00\$ 8%	820\$	790\$
S. Paulo, Unif. 1.000\$		
8%	932\$	928\$
Rio Grande do Sul 8%	845\$	—

Banks:—

Bôa Vista	600\$	—
Brasil	370\$	360\$
Portuguez nom.	95\$	—
Ditto, bearer	105\$	—
Commercio	—	212\$
Mercantil	490\$	—
Funcionarios	—	52\$
C. R. Minas	305\$	270\$

Railways:

M. S. Jeronymo	—	92\$
Paulista	210\$	—

Insurance:—

Confiança	360\$	—
Guanabara	200\$	155\$
Providente	—	2:900\$
União dos Proprietarios	—	400\$
Sagres	380\$	—

Textiles:—

Nova America	300\$	280\$
Brasil Industrial	345\$	335\$
Corcovado	—	60\$
Manufactoar	—	215\$
America Fabril	260\$	250\$

LONDON

Brazil Funding 185%		
Ditto, 1914 new		
Conversion, 1910, 4%		
Ditto 1908, 5%		
Federal District 5%		
Anglo-South Am. Bk. Ltd. ord.		
Brazilian Traction, ord.		
S. Paulo Coffee Estate Co. Ltd. 7%		
Cables Wireless Telg. Co. Ltd. 7%		
West. Tel Co. Ltd. 4% Dec. Stk. Red		
Braz. Warrant A'gy & F'nce Co. Ltd. ord.		
Rio de Jan. City Imp. Co. Ltd., ord.		
Imperial Chemical Ind. Ltd.		
S. Paulo Railway		
Leopoldina Ry, 6½% Term. Dec. 1933		
Rio de Janeiro Flour Mills		
Bank of London & South America		
Royal Mail		
British War Loan 3½% 1927-47		
Consols 2½%		

	1935	1936	1936
	Dec. 4th.	Nov. 27th.	Dec. 4th.
	83.0.0	93.15.0	95.10.0
	64.10.0	73.0.0	75.5.0
	11.15.0	18.15.0	20.5.0
	—	—	—
	21.0.0	25.0.0	28.0.0
	0.4.7½	—	—
	\$10.37	\$17.62	\$18.00
	81.15.0	92.0.0	93.5.0
	8.17.6	6.5.0	5.15.0
	105.0.0	105.0.0	105.0.0
	0.1.6	0.1.6	0.1.6
	0.8.9	0.9.0	0.17.0
	1.17.4½	2.2.10½	2.2.9
	45.0.0	83.0.0	83.0.0
	52.0.0	44.0.0	43.0.0
	1.17.3	1.18.6	1.18.6
	3.17.6	5.17.6	6.5.0
	—	—	—
	106.7.6	106.5.0	105.12.6
	86.12.6	85.0.0	83.12.6

NEW YORK

American & Foreign Power Co., In		
American Telephone & Telegraph Co.		
Armour & Co. of Illinois "A" Stock		
Atlantic Refining Co.		
Brazilian Traction L. & P. Co., Ltd.		
Corn Products Refining Co.		
Electric Bond & Share Co.		
General Electric Company		
General Motors Company		
Internat'l Business Machines Corp.		
International Cement Corp		
International Harvester Co.		
Radio Corporation of America		
Standard Oil Co. of New Jersey		
Texas Company		
United States Steel Corp.		
Westinghouse Electric & Manuf. Co.		
American Tobacco		
Eastman Kodak Co.		
Chrysler Corporation		
Chase National Bank, N. Y.		
National City Bank, N. Y.		
Royal Bank of Canada		

	Dec. 4th	Nov. 27th.	Dec. 4th.
	712	7.67	6.75
	158.50	186.37	188.25
	5.00	5.62	6.17
	24.25	31.50	31.12
	10.37	17.50	—
	69.62	71.50	70.12
	15.25	20.87	18.75
	38.37	51.87	50.87
	55.25	70.00	68.00
	183.00	—	—
	34.50	58.37	—
	62.00	99.00	97.75
	12.00	12.00	11.50
	49.75	66.00	66.00
	25.25	48.87	49.25
	48.50	46.62	74.25
	94.37	145.50	145.00
	99.50	98.75	100.00
	—	—	176.00
	84.00	127.50	123.00
	39.00	43.00	44.00
	36.00	37.00	37.00
	156.00	198.00	200.00

WILEMAN'S
Brazilian Review
CIRCULATES
in 33 different countries
THE STANDARD PUBLICATION
FOR BRAZILIAN STATISTICS
quoted by Government Departments
the world over

Alliança	—	55\$
Petropolitana	200\$	190\$
Progresso Industrial	—	275\$

Sundry:—

Artefac. de Borracha	75\$	—
Docas de Santos nom.	213\$	210\$
Ditto, bearer	—	224\$

Docas da Bahia	—	3\$
Mestre & Blatgé	208\$	—
Sul Mineira de Ele- ctricidade	—	212\$
Mercado Municipal	—	230\$

Debentures:—

Tecido Alliança	—	180\$
Docas de Santos	—	196\$
Usinas Nacionaes	—	210\$
Bellas Artes	220\$	—
A. Paulista	196\$	—

Progresso e Ind. do Brasil	—	192\$
Fluminense Foot-Ball Club	70\$	65\$
Manufactora	212\$	—
Hotel Palace	—	202\$
Mercado Municipal	210\$	202\$
Nova America	1:050\$	—

WILSON, SONS & COMPANY, LTD.

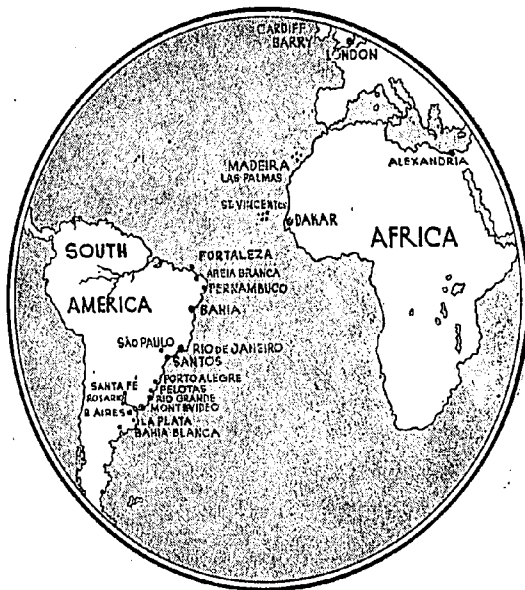
HEAD OFFICE
SALISBURY HOUSE
LONDON, E. C. 2 — ENGLAND

GENERAL MERCHANTS AND COAL IMPORTERS
STEAMSHIP AGENTS

BUNKER CONTRACTORS FOR ALL PORTS

Branches and Depôts at the following Towns.

CARDIFF
 BARRY
 ALEXANDRIA
 MADEIRA
 LAS PALMAS
 ST. VINCENT C. V.
 DAKAR (Cables "Charbon")
 FORTALEZA
 AREIA BRANCA
 PERNAMBUCO
 BAHIA
 RIO DE JANEIRO



SÃO PAULO
 SANTOS
 RIO GRANDE
 PELOTAS
 PORTO ALEGRE
 MONTEVIDEO
 BUENOS AIRES
 LA PLATA
 ROSARIO
 SANTA FE
 BAHIA BLANCA

Cable address "ANGLICUS"

MARINE and GENERAL ENGINEERS

TOWAGE - SALVAGE - LIGHTERAGE - STEVEDORING

SALT DISTRIBUTORS

LARGE STOCKS OF

CONSTRUCTIONAL MATERIALS ETC.

REGISTERED



TRADE MARK

**THE LEOPOLDINA RAILWAY COMPANY
ESTIMATED WEEKLY TRAFFIC RECEIPTS**

Year	Week ended	Receipts for week			Total from 1st January
		Currency	Exchange	Sterling	
1936	28th. Nov.	1 808:000\$	2.89 d.	£ 21.771	£ 943.775
1935	30th. Nov.	1 718:000\$	2.69 d.	£ 19.250	£ 859 871
Incr.	X X	90:000\$.20 d.	£ 2.515	£ 83.904
Decr.	X X	—	—	—	—

**SÃO PAULO RAILWAY COMPANY
ESTIMATED WEEKLY TRAFFIC RECEIPTS**

Year	Week ended	Currency	Ex. change	Sterling	Total to date
1935	Nov. 24th.	2,140:201\$200	88\$800 or 2d. 45/64	24,101-7- 4	1,192,698.3. 3
1936	Nov. 22nd.	2,700.000\$0 0	83\$150 or 2d. 57/64	32,471-8 - 9	1,416,053-11-11
In. rease		559:798\$800	Od. - 3/16	8,370-1- 5	223,355-8- 8
Decrease		—	—	—	—

**COFFEE STATISTICS
ENTRIES**

Week ending November, 28, 1936 — In bags of 60 kilos.

	For the week ended		For the crop
	Nov. 28 1936	Nov. 21 1936	Nov. 28 1936
RIO:			
By Central and Leopoldina Ry	51,794	19,836	822,343
Warehouses	750	—	10,012
TOTAL	63,247	25,350	1,072,753
Total Santos	234,799	268,896	3,572,441
Total - Rio & Santos	301,046	294,246	4,645,194

The total entries by different S. Paulo Railways for the crop to November, 28, 1936

	Paulista	Sorocabana and other	Total at S. Paulo	Total at Santos
1936/1937	1,219,663	2,375,374	3,595,037	3,572,441

COFFEE LOADED (EMBARQUES)

Week ending November, 28, 1936 — In bags of 60 kilos.

	During Week ended		For the crop
	Nov. 28 1936	Nov. 21 1936	Nov. 28 1936
Rio	41,531	38,500	798,529
Santos	197,377	227,961	3,786,150
Total - Rio & Santos	238,908	266,467	4,584,679

SALES OF COFFEE (DECLARED)

Week ending November, 28, 1936 — In bags of 60 kilos.

	During Week ended		For the crop
	Nov. 28 1936	Nov. 21 1936	Nov. 28 1936
Rio	11,827	17,549	462,953
Santos	215,000	230,000	3,366,000
Total - Rio & Santos	226,827	247,549	3,828,953

Value of Coffee Cleared for Foreign Ports

Week ending November, 28, 1936 — In bags of 60 kilos.

PORTS	NOV. 28 1936	NOV. 21 1936	NOV. 28 1936	NOV. 21 1936	CROP TO NOV. 28, 1936	
	Bags	Bags	£	£	Bags	£
Rio	24690	37035	30232	44975	716951	8055 92
Santos	259568	177815	324351	218619	3602724	4476294
TOTAL 1936/1937	284258	214850	354583	263594	4319675	5281886

COFFEE SAILED

Week ending November, 28, 1936 — In bags of 60 kilos.

P. RTS	UNITED STATES	EUROPE & MEDITERRANEAN	COAST	LOWER PLATE	CAPE	OTHER PORTS	TOTAL FOR WEEK	CROP TO DATE
Rio	2250	20180	385	2260	—	—	25075	752362
Santos	188289	70128	—	1151	—	—	259568	3604346
TOTAL	190539	90308	385	3411	—	—	284643	4356708

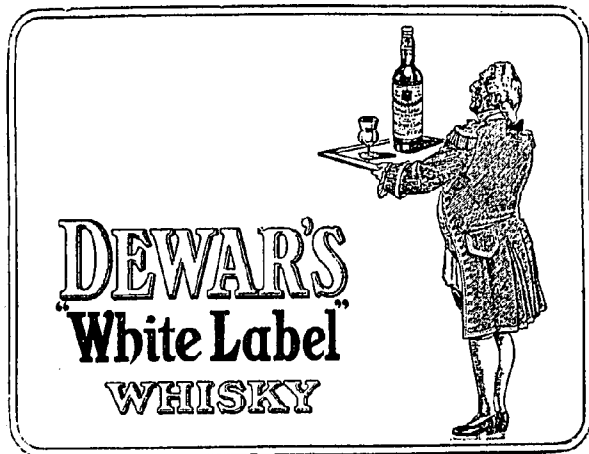
RIO AND SANTOS STOCKS
IN BAGS OF 60 KILOS

Rio stock on Nov. 21, 1936	678,488
Entries during week ended Nov. 28, 1936	66,247
	744,735
Loaded (Embarques) for week ended Nov. 28, 1936	41,531
Local consumption week ended Nov. 28, 1936	3,500
	700,504
Stock at Rio on Nov. 28, 1936	2,172,888
Santos Stock on Nov. 21, 1936	234,799
Entries for week ended Nov. 28, 1936	2,407,687
	197,377
Loaded (Embarques) during for week ended Nov. 28, 1936	2,210,310
Stock at Santos on Nov. 28, 1936	2,910,814
Stock at Rio and Santos, on Nov. 21, 1936	2,851,376

NOTE — In the Rio stock, 800 bags, have been included by D. N. C.

BAHIA STOCKS

Bahia Stock in 27th. November, 1936	28.153
Entries during week ending 4th. Dec. 1936	5.746
Available	33.899
Clearances during week:	
Europe	—
To U. S.	—
To Elsewhere	8.366
Bahia stock on 4th. December, 1936	25.533



São Paulo Railway

SANTOS — SÃO PAULO — INTERIOR

MERCHANDISE

PARCELS

BAGGAGE

Collection and Delivery from

DOOR TO DOOR

Estação da Luz — São Paulo

Caixa Postal "C"

Phone 3-2193

Cia Geral DE Transportes

COFFEE PRICES CURRENT

Rio de Janeiro, 4th. December, 1936

COFFEE SERVICE	28	30	1	2	3	4
Rio spot N.º 7	198500	198500	198500	198500	198500	Holiday
" futures						
December	198850	198625	198625	198625	198525	
January	198750	198500	198500	198450	198475	
February	198400	198350	198275	198375	198175	
March	198050	188825	188700	188350	188775	
April	188850	188650	188675	188700	188725	
May	188700	188575	188775	188675	188725	
Sales	1.500	4.500	9.500	7.000	4.000	
Santos spot N.º 4	208700	208800	218000	218300	218700	218800
" futures						
December	188500	188750	198425	198500	198750	198700
January	188650	188750	198400	198475	198725	198700
February	188650	188750	198425	198500	198750	198750
March	188725	188850	198525	198575	198725	198650
April	188800	188975	198425	198475	198475	198500
May	188800	188975	198400	198450	198450	198425
Sales	7.000	3.500	5.000	16.000	12.000	12.000
New York Rio spot N.º 6	9 1/4	9 1/4	9 1/4	9 1/4	9 1/4	9 1/2
" " " " N.º 7	8 5/8	8 5/8	8 5/8	8 5/8	8 7/8	8 7/8
" " Santos " " N.º 4	10 3/4	10 3/4	11	11	11 1/8	11 1/8
" " " " " " N.º 7	9 1/2	9 1/2	9 3/4	9 3/4	9 7/8	9 7/8
" futures						
December	3.85	3.98	4.03	3.95	4.08	4.01
March	3.90	4.03	4.10	4.07	4.15	3.92
New contract						
May	6.73	6.76	6.85	7.03	7.02	7.09
July	6.78	6.82	6.91	7.10	7.10	7.15
Sales	5.000	5.000	5.000	5.000	5.000	10.000
Havre futures						
December	201	202	—	—	—	—
March	206 1/4	206 1/4	206	206	207 1/2	208
May	210	209 1/4	209 1/2	209 1/4	211 1/2	212 3/4
July	213 3/4	212 3/4	213	213 3/4	215 1/2	216 1/2
September	—	—	215 3/4	216	218 3/4	219 1/2
Sales	18.000	40.000	24.000	39.500	28.000	45.000
Hamburg futures						
December	42	42	42	42	42	42
March	42	42	42	42	42	42
May	42	42	42	42	42	42
July	42	42	42	42	42	42
Sales	Nil	Nil	Nil	Nil	Nil	Nil

**RIO DE JANEIRO
COFFEE MANIFESTS**

NOV. 15th.		
	"ALMANZORA"	
	Funchal	
Fraga Irmão & Cia	50	
	Lisbon	
Fraga Irmão & Cia	800	
Total	850	
NOV. 18th.		
	"NAVASOTA"	
	Rosario	
Vivacqua Irmão S/A	300	
	Buenos Aires	
Vivacqua Irmãos S/A	200	
Abreu & Filhos	200	
Total	700	
NOV. 18th.		
	"HIGHLAND PRINCESS"	
	Teneriffe	
Hard, Rand & Cia	83	
NOV. 18th.		
	"ALPHERAT"	
	Rotterdam	
Mc. Kinlay S/A	150	
Ornstein & Cia	63	
Theodor Wille & Cia, Ltd	50	
	Hamburg	
Cia Nac. Comercio de Café	62	
Total	325	
NOV. 18th.		
	"LA PLATA MARU"	
	Houston	
Abreu & Filhos	125	

	New Orleans	
Castro Silva & Cia	1,750	
A. Jabour & Cia	375	
Total	2,250	
NOV. 19th.		
	"HERAKLES"	
	Helsingfors	
A. Jabour & Cia	2,725	
Mc. Kinlay S/A	2,175	
Theodor Wille & Cia, Ltd	1,150	
Castro Silva & Cia	1,000	
Vivacqua Irmãos S/A	375	
	Abo	
Sinner & Cia, Ltd	725	
A. Jabour & Cia	525	
Castro Silva & Cia	500	
Cia Nac Comercio de Café	250	
Mc. Kinlay S/A	125	
Vivacqua Irmãos S/A	125	
	Kotka	
Vivacqua Irmãos S/A	75	
	Wiborg	
A. Jabour & Cia	525	
Sinner & Cia Ltd	100	
	Mantyluoto	
E. G. Fontes & Cia	60	
Total	10,435	
NOV. 19th.		
	"MAR BIANCO"	
	Buenos Aires	
Souza Pimentel & Cia	560	
Ornstein & Cia	400	
	Rosario	
Ornstein & Cia	600	
Total	1,560	

NOV. 21st.		
	"ALABAMA"	
	Teneriffe	
Mc. Kinlay S/A	400	
Sinner & Cia, Ltd	200	
Total	600	
NOV. 21st.		
	"GENERAL FIGAS"	
	Hamburg	
Abreu & Filhos	250	
Vivacqua Irmãos S/A	125	
Total	375	
NOV. 24th.		
	"ALMIRANTE ALEXANDRINA"	
	Lisbon	
Julian Cachel	2,000	
Mario Telles	500	
Mc. Kinlay S/A	25	
Leon Israel Co S/A	25	
	Leixões	
Ornstein & Cia	1,125	
Leon Israel Co S/A	700	
Mario Telles	660	
Mc. Kinlay S/A	425	
Hard, Rand & Cia	100	
	Havre	
Ornstein & Cia	750	
E. G. Fontes & Cia	500	
A. Jabour & Cia	500	
Cia Nac. Comercio de Café	127	
	Hamburg	
Sinner & Cia, Ltd	500	
Total	7,937	
Total Overseas	24,690	



FINLAND SOUTH AMERICA LINE

SUOMEN ETELÄ-AMERIKAN LINJA

FORTNIGHTLY SAILINGS FROM SANTOS, RIO DE JANEIRO AND VICTORIA DIRECT TO POLAND (GDYNIA), DANZIG & FINLAND.

<i>Next sailings:</i>	<i>From Santos</i>	<i>From RIO</i>	<i>From VICTORIA</i>
"EQUATOR"	Dec. 21	Dec. 23	Dec. 25
"AURA"	Jan. 10	Jan. 12	Jan. 14

AGENTS: RIO DE JANEIRO — WILSON, SONS & CO. LTD. — AV. RIO BRANCO, 37 — TEL. 23-1532
 SANTOS — FINLAND SOUTH AMERICA LINE — R. 15 NOVEMBRO 183 — TEL. 5-379
 VICTORIA — CARL BOLL — CAIXA POSTAL 23.

**SANTOS
COFFEE MANIFESTS**

NOV. 16th.

"ALPHERAT"

Rotterdam

Theodor Wille & Cia, Ltd . . .	3.531
Hard, Rand & Cia	1.125
H. La Domus & Cia	750
E. Johnston & Cia	651
Sampaio Bueno & Cia	375
Ribeiro do Valle & Cia	350
Ramos, Silva & Cia Ltd	333
Martins, Gregory & Cia, Ltd . . .	126
Leon Israel Co S/A	125
Cia Prado Chaves	125
Naumann, Gepp & Cia, Ltd . . .	63
Gieseler & Cia	63

Oslo

Cia Leme Ferreira	125
-----------------------------	-----

Hamburg

Sampaio Bueno & Cia	63
-------------------------------	----

Total 7.805

NOV. 16th.

"LA PLATA MARU"

Houston

Naumann, Gepp & Cia, Ltd . . .	11.500
Hard, Rand & Cia,	3.690
Almeida Prado & Cia	2.625
Ray Deininger & Cia, Ltd	1.500

Vidigal, Prado & Cia	1.000
Franco, Soares & Cia	400
Theodor Wille & Cia, Ltd	375
Nioac & Cia, Ltd	375
E. Johnston & Cia, Ltd	300
Leon Israel Co S/A	100

New Orleans

Sampaio Bueno & Cia,	2.500
Theodor Wille & Cia, Ltd	1.868
Cia Leme Ferreira	1.135
Hard, Rand & Cia	1.000
Zander & Cia, Ltd	1.000
Almeida Prado & Cia	1.000
Luiz Ferreira & Cia	523
Lima, Nogueira & Cia	500
Martins, Gregory & Cia	250

San Pedro (Los Angeles)

Almeida Prado & Cia	500
Theodor Wille & Cia, Ltd	250
Naumann, Gepp & Cia, Ltd	125
H. La Domus & Cia	50

Galveston

Oswaldo Ferreira & Cia	200
----------------------------------	-----

Total 32.676

NOV. 16th

"HIGHLAND PRINCESS"

London

E. Johnston & Cia, Ltd	2
----------------------------------	---

NOV. 17th.

"PERAKLES"

Helsinki

Naumann, Gepp & Cia, Ltd	299
----------------------------------	-----

Leon Israel Co S/A	250
(Cia Leme Ferreira	188

Dantzic

Hard, Rand & Cia	50
----------------------------	----

Total

787

NOV. 17th.

"WEST SELENE"

Boston

Ray Deininger & Cia, Ltd	3.500
Almeida Prado & Cia	2.000
Zander & Cia, Ltd	865
Cia Paulista de Exportação	750
Theodor Wille & Cia, Ltd	550
Vidigal, Prado & Cia	500
Naumann, Gepp & Cia, Ltd	500
H. La Domus & Cia	500
Arbuckle & Cia	375
Sampaio Bueno & Cia	250
Pedro Joest	250
Exp. Rubiac Ltd	250

Philadelphia

Hard, Rand & Cia	1.000
Nioac, & Cia, Ltd	855
E. Johnston & Cia, Ltd	500
Ray Deininger & Cia, Ltd	250
Almeida Prado & Cia	250
Theodor Wille & Cia, Ltd	250
Sampaio Bueno & Cia	125
Manoel Vallejo	125

Total 13.645



MUNSON S.S. LINE

The only North - American Luxurious Liners

— on the "BRAZIL - NEW YORK" route —

21 Thousand Tons each — First and Tourist Class Accommodation — Special prices for TRIANGULAR VOYAGES "RIO-NEW YORK-EUROPE-RIO" or "RIO-EUROPE-NEW YORK-RIO"

	To New York	To Buenos Aires
WESTERN WORLD	December 17th.	—
SOUTHERN CROSS	December 31st.	December 18th.
PAN AMERICA	January 14th.	January 1st.
AMERICAN LEGION	January 28th.	January 15th.
WESTERN WORLD	February 11th.	January 29th.

These modern liners are newly reconditioned and renovated

FOR RATES & FURTHER INFORMATION The Federal Express Co.

RIO DE JANEIRO - SANTOS - SÃO PAULO

NOV. 17th.	S. A. Marques Ferreira . . .	1.000					
"ALMIRANTE ALEXANDRINO"	H. La Domus & Cia . . .	750					
	Almeida Prado & Cia . . .	500					
	Mellão, Nogueira & Cia . . .	500					
	Luiz Ferreira & Cia . . .	500					
	Junqueira, Meirelles & Cia . . .	375					
	Paiva, Nunes & Cia . . .	315					
	Theodor Wille & Cia, Ltd . . .	250					
	Zander & Cia, Ltd . . .	250					
	Lima, Nogueira & Cia . . .	250					
	Havre						
Oswaldo Ferreira & Cia . . .		1.250					
Cia Prado Chaves . . .		750					
S. A. Marques Ferreira . . .		500					
Nioac & Cia, Ltd . . .		350					
Assumpção, Irmão & Cia, Ltd . . .		250					
Leon Israel Co S/A . . .		250					
Soc. Mogyana Export, Ltd . . .		130					
Luiz Ferreira & Cia . . .		100					
Naumann, Gepp & Cia, Ltd . . .		62					
Linnen de Paula Machado . . .		2					
	Hamburg						
Theodor Wille & Cia, Ltd . . .		937					
Exp. Café Brasil, Ltd . . .		250					
Nioac, & Cia, Ltd . . .		250					
Pedro Joest . . .		250					
Total		5.331					
NOV 17th .							
"OREGON"							
Copenhagen							
Cia Leme Ferreira . . .		1.800					
Hard, Rand & Cia . . .		905					
Theodor Wille & Cia, Ltd . . .		210					
Nykobing-Falster							
Ribeiro do Valle & Cia . . .		375					
Total		3.299					
NOV. 18th.							
"PARAGUAYO"							
New York							
Hard, Rand & Cia . . .		6.964					
Ray Deininger & Cia, Ltd . . .		4.750					
Sampaio Bueno & Cia . . .		3.000					
Arbuckle & Cia . . .		2.875					
Cia Leme Ferreira . . .		2.750					
Oswaldo Ferreira & Cia . . .		2.750					
E. Johnston & Cia, Ltd . . .		2.411					
Leon Israel Co S/A . . .		1.875					
Cia Prado Chaves . . .		1.707					
Barros, Pinto & Cia . . .		1.500					
Exp. Rubiac, Ltd . . .		1.125					
S. A. Levy . . .		1.000					
	Philadelphia						
Theodor Wille & Cia, Ltd . . .		1.000					
E. Johnston & Cia, Ltd . . .		500					
Sampaio Bueno & Cia . . .		500					
	Baltimore						
Theodor Wille & Cia, Ltd . . .		1.250					
Lima, Nogueira & Cia . . .		250					
Cia Prado Chaves . . .		250					
Exp. Rubiac, Ltd . . .		125					
	Norfolk						
Franco, Soares & Cia . . .		750					
Theodor Wille & Cia, Ltd . . .		250					
Total		42.272					
NOV. 18th.							
"PAN AMERICA"							
New York							
American Coffee Corp . . .		3.687					
Hard, Rand & Cia . . .		2.421					
Nioac, & Cia, Ltd . . .		2.224					
Luiz Ferreira & Cia . . .		1.596					
Ray Deininger & Cia, Ltd . . .		1.500					
Mellão, Nogueira & Cia . . .		1.482					
Soc. Nacional Export, Ltd . . .		1.250					
Sampaio Bueno & Cia . . .		1.000					
Arbuckle & Cia . . .		1.000					
Cia Leme Ferreira . . .		850					
S. A. Marques Ferreira . . .		750					
Theodor Wille & Cia, Ltd . . .		600					
Martins, Gregory & Cia, Ltd . . .		500					
Exp. Café Brasil, Ltd . . .		500					
Leon Israel Co S/A . . .		500					
Gieseler & Cia . . .		450					
Exp. Rubiac, Ltd . . .		250					
Oswaldo Ferreira & Cia . . .		250					
Ramos, Silva & Cia . . .		250					
Lima, Nogueira & Cia . . .		250					
	Winnipeg						
Martins, Gregory & Cia . . .		250					
Total		21.560					
NOV. 19th.							
"MONTE ROSA"							
Hamburg							
Exp. Café Brasil, Ltd . . .		497					
J. G. Martins & Cia, Ltd . . .		312					
Naumann, Gepp & Cia, Ltd . . .		271					
Vidigal, Prado & Cia . . .		250					
Gieseler & Cia, Ltd . . .		250					
Ribeiro do Valle & Cia . . .		205					
Bremen							
Ribeiro do Valle & Cia . . .		250					
J. G. Martins, & Cia, Ltd . . .		250					
Total		2.285					
NOV. 19th.							
"CAMPANA"							
Marseille							
Hard, Rand & Cia . . .		875					
Camargo Pacheco & Cia . . .		750					
Theodor Wille & Cia, Ltd . . .		563					
Cia Prado Chaves . . .		250					
H. La Domus & Cia . . .		188					
Martins, Gregory & Cia, Ltd . . .		125					
E. Johnston & Cia, Ltd . . .		63					
Nioac, & Cia, Ltd . . .		1					
Tunis							
Nioac, & Cia, Ltd . . .		195					
Theodor Wille & Cia, Ltd . . .		188					
Alexandria							
Theodor Wille & Cia, Ltd . . .		250					
Total		3.448					
NOV. 19th.							
"ZAALAND"							
Amsterdam							
Theodor Wille & Cia, Ltd . . .		5.000					

DEN NORSKE SYD-AMERIKA LINJE

(The Norwegian South America Line)

Regular Service to Denmark, Finland,
Norway, Baltic, River Plate
& vice-versa with 8 fast going
MODERN DIESEL MOTOR LINERS

NEXT SAILINGS

FOR RIVER PLATE

FOR FINLAND, DENMARK
NORWAY & BALTIC

M/S "COMETA" 21st. Dec.

M/S NORMA 18th. Dec.

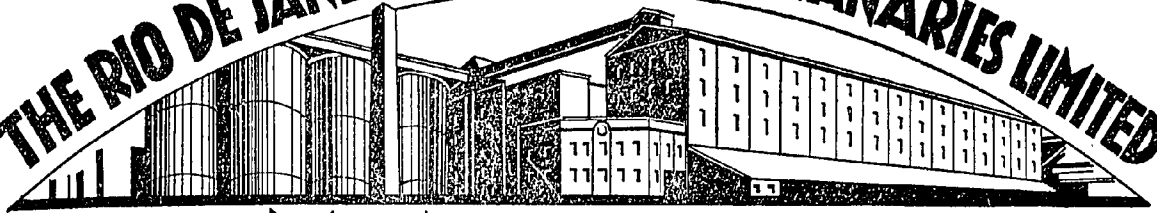


The vessels dispose of accommodation for a limited number
of 1st. class passengers for Scandinavia and also for London
& Dieppe with transhipment in Teneriffe.

For further particulars apply to

FREDRIK ENGELHART & CIA. — RUA S. PEDRO N. 9 — RIO DE JANEIRO
ALEX S. GRIEG & CIA. — PRAÇA DA REPUBLICA N. 51 — SANTOS

THE RIO DE JANEIRO FLOUR MILLS & GRANARIES LIMITED



MOINHO INGLEZ RIO DE JANEIRO

OFFICES
Rua da Quitanda, 106-110
Tel. 23-2130

MILLS & GRANARIES
Av. Rodrigues Alves
(coas do porto)
tel. 24-1411/3

P. O. BOXES
486-740
Telegrams: "EPIDERMIS" RIO

DAILY PRODUCTION 15.000 BAGS

SOLE DISTRIBUTORS FOR

BISCOITOS
AYMORE'



MASSAS
AYMORE'

SALES DEPARTMENT - FLOUR - Tel. 23-1081 BISCUITS & MACARRONI - Tel. 23-2732

Hard, Rand & Cia	2.000	Rebello, Alves & Cia	375	Skive	
Almeida Prado & Cia	1.625	Almeida Prado & Cia	325	Theodor Wille & Cia, Ltd	40
Naumann, Gepp & Cia, Ltd	1.099	J. G. Martins & Cia, Ltd	325	Total	10.485
Cia Prado Chaves	750	Ribeiro do Valle & Cia	250		
Cia Leme Ferreira	625	Vidigal, Prado & Cia	125		
Sampaio Bueno & Cia	500				
Lima, Nogueira & Cia	250	Total	52.376	NOV. 20th.	
S. A. Marques Ferreira	90				
Total	11.939	NOV. 20th.		"GENERAL ARTIGAS"	
NOV. 20th.				Hamburg	
"DELMUND"		Buenos Aires		Theodor Wille & Cia, Ltd	5.060
New Orleans		Lima, Nogueira & Cia	751	Hermann Gaih & Cia	1.343
		Mario, Lionello	150	Leon Israel Co S/A	1.333
		Montevideo		Hard, Rand & Cia	1.049
		Lima, Nogueira & Cia	250	Naumann, Gepp & Cia, Ltd	998
		Total	1.151	Lima, Nogueira & Cia	985
		NOV. 20th.		Oswaldo Ferreira & Cia	800
		"ALABAMA"		Almeida Prado & Cia	743
		Copenhagen		Soc. Mogyana Export, Ltd	712
		Sampaio Bueno & Cia	3.787	Sampaio Bueno & Cia	627
		Cia Leme Ferreira	1.968	Cia Prado Chaves	623
		Theodor Wille & Cia, Ltd	1.500	Exp. Café Brasil, Ltd	375
		Hard, Rand & Cia	1.375	Martins, Gregory & Cia, Ltd	313
		Naumann, Gepp & Cia Ltd	743	B. Gonçalves & Cia, Ltd	250
		Cia Prado Chaves	310	E. Johnston & Cia, Ltd	250
		J. G. Martins & Cia, Ltd	300	Vidigal, Prado & Cia	138
		Soc. Mogyana Export, Ltd	125	Nossack & Cia	125
		H. La Domus & Cia	125	Ribeiro do Valle & Cia	125
		Randers			
		Theodor Wille & Cia	212	Bremen	
				Theodor Wille & Cia, Ltd	1.000
				Naumann, Gepp & Cia, Ltd	272
				J. G. Martins & Cia Ltd	250
				Soc. Mogyana Export, Ltd	250
				Stockholm	
				Junqueira, Meirelles & Cia	125
				Total	17.746

NOV. 20th.

"CONTE BIANCAMANO"

Genoa

Barros Penteadó & Cia	2.090
Matteo Fil. Valinotti	2.000
Exp. Rubiac, Ltd	250
Theodor Wille & Cia, Ltd	125
N. Marino	52

Bengasi

Nioac & Cia, Ltd	63
----------------------------	----

Alexandretta

Theodor Wille & Cia	63
-------------------------------	----

Total 4.643

NOV. 21st.

"KOSCIUSZKO"

Dantzig

Theodor Wille & Cia, Ltd	746
Gieseler & Cia	551
Hard, Rand & Cia	263
Martins, Gregory & Cia Ltd	95
Almeida Prado & Cia	13

Gdynia

Hard, Rand & Cia	250
Theodor Wille & Cia, Ltd	247
Naumann, Gepp & Cia, Ltd	160
Gieseler & Cia	33

Total 2.358

NOV. 21st.

"TROUBADOUR"


New York

E. Johnston & Cia, Ltd	5.000
American Coffee Corp.	5.000
Ray Deininger & Cia, Ltd	4.500
Theodor Wille & Cia, Ltd	2.885
Cia Prado (Chaves)	2.000
Exp. Rubiac, Ltd	1.500
Hard, Rand & Cia	1.250
S. A. Levy	1.000
Soc. Nacional Export. Ltd	750
Oswaldo Ferreira & Cia	750
Sampaio Bueno & Cia	500
Luiz Ferreira & Cia	500
Arbuckie & Cia	125

Total 25.760

Total Overseas 259.568

YOU MUST HAVE
A COPY OF



OBTAINABLE AT
ROYAL MAIL OFFICES

Price 10S000

MEAT

MEAT CLEARANCES DURING WEEK
ENDING 27th. NOVEMBER, 1936

NOV. 23rd.

"AUTURIAS"

Southampton

Frig. Anglo Preserved	152,863
---------------------------------	---------

NOV. 24th.

"HAKONESAN MARU"

Manila

Frig. Anglo Preserved	28,304
---------------------------------	--------

NOV. 24th.

"ANTONIO DELFINO"

Hamburg

Frig. Anglo Preserved	4,717
---------------------------------	-------

NOV. 24th.

"CRUX"

Fredrekstad

Frig. Wilson Salted pork	2,354
------------------------------------	-------

NOV. 25th.

"EASTERN PRINCE"

Trinidad

Armour Co Preserved	7,874
-------------------------------	-------

Christobal

Frig. Wilson Preserved	1,710
----------------------------------	-------

NOV. 25th.

"ESQUELINO"

Genoa

Frig. Anglo Preserved	1,887
---------------------------------	-------

NOV. 27th.

"H. BRIGADE"

London

Fri. Wilson Frozen offal	8,090
------------------------------------	-------

NOV. 27th.

"FORMOSE"

Havre

Frig. Anglo Frozen beef	27,740
-----------------------------------	--------

Total

235,539

FRUIT

CLEARANCES DURING WEEK
ENDING 27th. NOVEMBER, 1936

Confirmation of Santos Fruit

FROM SANTOS

"BANANAS IN BUNCHES"

NOV. 21st.

"DUQUESA"

London	16,477
------------------	--------

NOV. 23rd.

"ASTURIAS"

Southampton	8,668
-----------------------	-------

NOV. 27th.

"H. BRIGADE"

London	6,885
------------------	-------



DEWAR'S
"WHITE LABEL"
Whisky

WILEMAN'S
Brazilian Review
CIRCULATES
in 33 different countries
THE STANDARD PUBLICATION
FOR BRAZILIAN STATISTICS
quoted by Government Departments
the world over

JOHNSON LINE

Rederiaktiebolaget Nordstjernan Stockholm
(Sweden)
REGULAR SERVICE BY MOTOR VESSELS
from SWEDEN, POLAND, BALTIC PORTS
and VICE-VERSA

SAILINGS	For the River Plate	For Swede and Poland
Lima	—	11th. Dec.
Uruguay	—	26th. Dec.
San Francisco	10th. Dec.	13th. Jan.
Brasil	20th. Dec.	21st. Jan.
Santos	2nd. Jan.	7th. Febr.
Nordstjernan	—	17th. Febr.
Kronpr. Margareta	5th. Feb.	10th. Mar.
Argentina	8th. Febr.	7th. Mar.
Uruguay	16th. Febr.	21st. Mar.

M/S SAN FRANCISCO
due to arrive on Sails for

SANTOS & BUENOS AIRES

M/S LIMA

due to arrive on Sails for
VICTORIA, BAHIA, CEARA, SWEDEN, POLAND

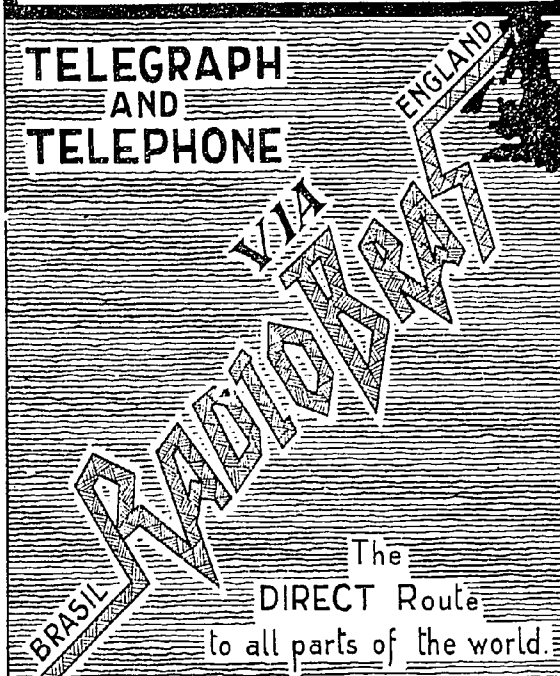
The Vessels dispose of accommodations for
limited number of First-Class Passengers
For further particulars apply to the Agents: —

J. Dias Paes	Pará	P. O. Box 668
P. & W. & Co.	Ceará	P. O. Box 29
Williams & Co.	Pernambuco	P. O. Box 245
Gueudeville & Co.	Bahia	P. O. Box 203
Johnson Line Ag.	Santos	P. O. Box 494
Hard, Rand & Co.	Victoria	P. O. Box 125
Wigg Brothers	Rio de Janeiro — Porto Alegre	

LUIZ CAMPOS FILHOS & CIA
Rua 1ª de Março, 117 — Phones: 23-2896 & 23-3337
RIO DE JANEIRO

SPEED is ECONOMY

TELEGRAPH AND TELEPHONE



The
DIRECT Route
to all parts of the world.

CIA RADIOTELEGRAPHICA BRASILEIRA

COTTON SUGAR AND RUBBER QUOTATIONS

COTTON SERVICE

Rio de Janeiro, 4th. December 1936

Liverpool 12,30 P. M.		28	30	1	2	3	4
Pernambuco Macelo fair	spot	6.38	6.44	6.42	6.47	6.46	6.46
São Paulo fair		6.53	6.59	6.57	6.62	6.51	6.61
American Middling		6.71	6.77	6.77	6.82	6.81	6.81
American futures	January	6.49	6.55	6.56	6.60	6.59	6.60
	March	6.47	6.53	6.55	6.60	6.59	6.60
	May	6.47	6.50	6.52	6.47	6.56	6.57
	July	6.42	6.45	6.47	6.52	6.51	6.52
New York American	Middling Uplands	12.36	12.43	12.58	12.63	12.64	12.64
futures	January	11.77	11.86	12.01	12.06	12.08	12.06
	March	11.74	11.83	11.98	12.03	12.04	12.04
	May	11.60	11.68	11.84	11.93	11.90	11.92
	July	11.50	11.55	11.69	11.78	11.76	11.76

SUGAR SERVICE

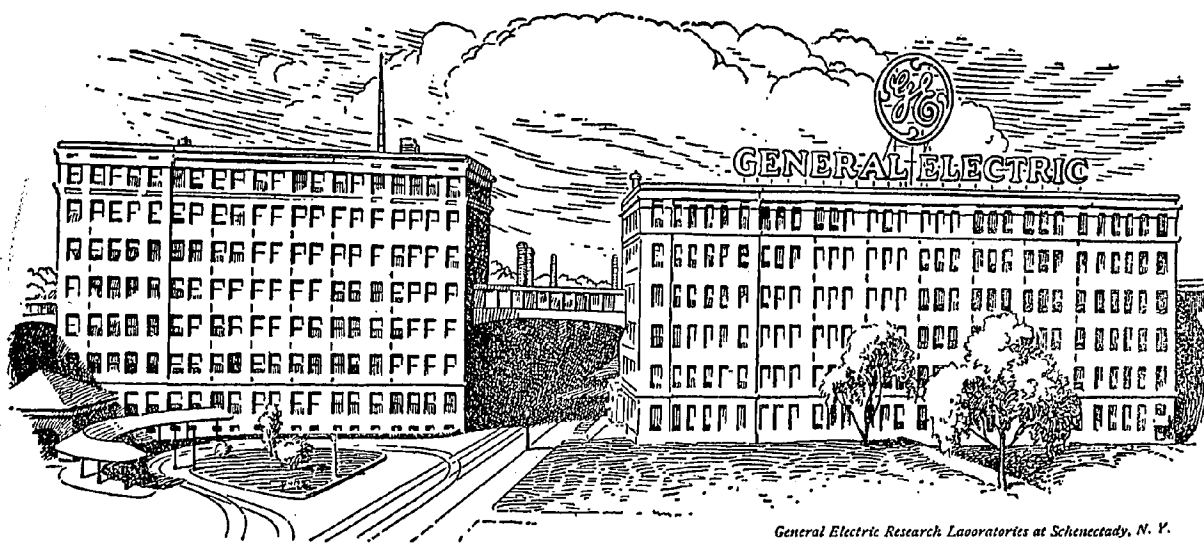
New York futures	December	2.79	2.85	2.87	2.90	2.87	2.87
	January	2.77	2.81	2.82	2.83	2.80	2.80
	March	2.80	2.84	2.84	2.86	2.82	2.83
	May	2.83	2.86	2.88	2.89	2.84	2.85
	London futures	November	4/8 1/4	—	—	—	—
	December	4/8 1/4	4/8 3/4	4/8 1/4	4/8 1/2	4/8 1/2	4/9 1/4
	January	—	4/8 3/4	4/9	4/9	4/9	4/9 1/4
	March	4/9 1/2	4/10 1/4	4/10	4/9 3/4	4/10	4/10
	May	4/10 1/2	4/10 3/4	4/10 1/2	4/10 1/4	4/10 1/4	4/10 1/4

RUBBER SERVICE

Upriver fine	22 1/2	22 1/2	22 1/2	23	23	23
Smoked Sheets	18 1/4	18 1/2	18 1/2	18 1/2	18 5/8	18 5/8
Market	Steady	Steady	Steady	Firm	Steady	Steady

COTTON EXPORTS

Date	Port of Shipment	Ship	Port of Destination	Bales	Kilos
Nov. 6	Pará	Hilary	Oporto	33	6,166
" 12	Fortaleza	"	Liverpool	2,842	827,231
" 12	"	"	Leixões	11	2,090
" 12	Natal	Polycarpo	Liverpool	1,495	283,683
" 12	"	"	Havre	123	22,997
" 12	Pernambuco	Londonier	Antwerp	485	90,837
" 13	Cabedello	Santos	Leixões	305	56,424
" 13	"	"	Bombay	258	52,895
" 14	Areia Branca	Polycarpo	Liverpool	369	67,930
" 14	Natal	Honstein	Antwerp	75	15,408
" 14	"	"	Ghent	253	46,959
" 14	Pernambuco	Oceania	Trieste	219	45,173
" 14	"	"	Venive	110	22,986
" 15	Fortaleza	E. Costa	Trieste	556	106,222
" 16	Santos	Alpherat	Rotterdam	770	108,329
" 17	"	West Selene	Boston	1,927	348,004
" 17	"	Alm. Alexandrino	Leixões	535	94,390
" 17	"	"	Antwerp	183	33,023
" 17	"	"	Havre	65	11,592
" 18	"	Leighton	Liverpool	4,887	835,674
" 19	Pernambuco	Groix	Dunkirk	165	34,068
" 19	"	"	"	328	60,964
" 19	Santos	Zaaland	Amsterdam	168	28,124
" 19	"	Ludwigshafen	Hamburg	1,336	226,741
" 19	"	"	Bremen	6,029	1,070,252
" 19	"	"	Genoa	61	10,327
" 26	"	Atlanta	Trieste	2,230	387,658
" 26	"	"	Venice	793	139,078



General Electric Research Laboratories at Schenectady, N. Y.

IN GENERAL ELECTRIC'S "HOUSE OF MAGIC," DISCOVERIES AND INVENTIONS ARE NOT TERMINALS. THEY ARE FRESH STARTING POINTS FROM WHICH SCIENTISTS SOAR TO NEW KNOWLEDGE.

GENERAL  **ELECTRIC**