

Wileman's BRAZILIAN REVIEW

A Weekly Journal of Trade, Finance Economics and Shipping.

RIO DE JANEIRO
Rua Theophilo Ottoni, 41

ESTABLISHED 1898

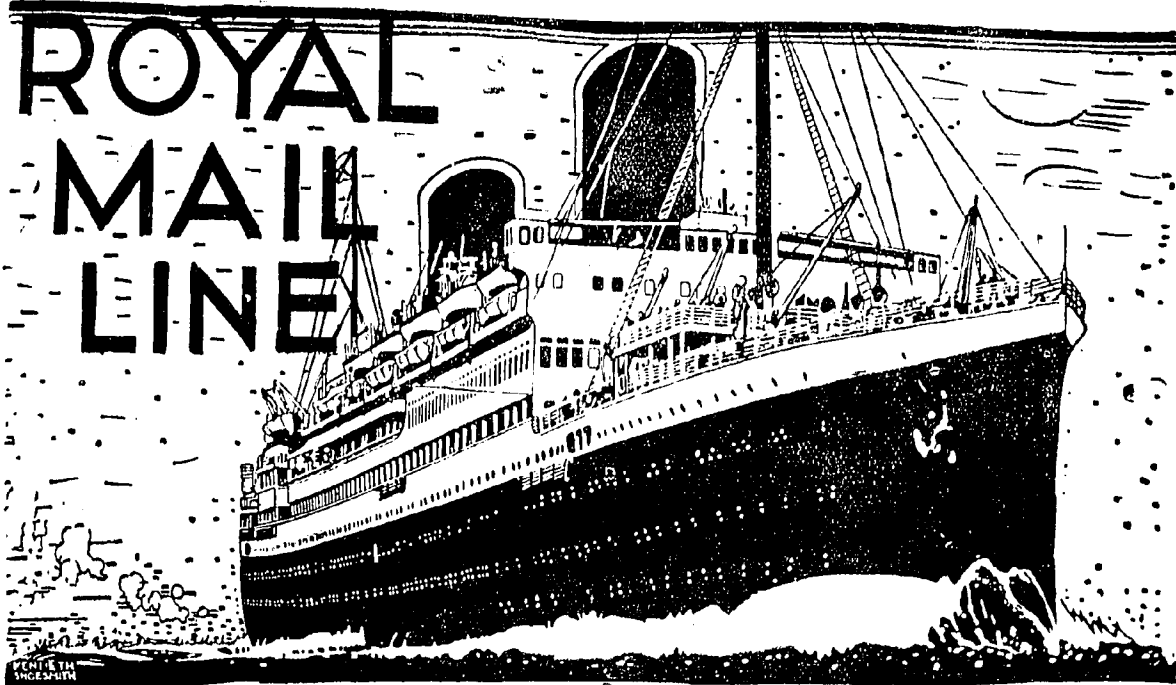
(CAIXA POSTAL)
(P. O. Box) 809

VOL. 29

RIO DE JANEIRO 17th. AUGUST, 1936

Nº 7

2\$000



REGULAR SAILINGS
BY EXPRESS TURBINE STEAMERS

**ALCANTARA
ASTURIAS**

LARGEST AND FASTEST BRITISH LINERS
TO EUROPE AND RIVER PLATE

FOR PASSAGES AND FURTHER INFORMATION APPLY TO

ROYAL MAIL AGENCIES (BRAZIL) LTD.

Agents: **ROYAL MAIL LINES, LIMITED.**

RIO DE JANEIRO: AVENIDA RIO BRANCO, 51/55 — TEL. 23-2161

ALSO AT SANTOS, SAO PAULO, BAHIA, PERNAMBUCO, RIO GRANDE, ETC.

The City of Santos Improvements Company, Limited

CAIXA 4 — SANTOS — ESTADO DE SÃO PAULO

GAS DEPARTMENT. Special coke and tar produced by the continuous carbonization process. Also soft pitch for waterproofing purposes, crude benzol and oils for the manufacture of disinfectants.

WATER DEPARTMENT. — Distribution on the constant supply system. Special cheap rates for industrial supplies. Ships supplied with water of guaranteed purity, at the rate of 150 tons per hour if required.

ELECTRICITY DEPARTMENT. — Installations of any magnitude for Light and Power. Cheap power for long hour consumers. Motor repairs.

TRAMWAYS DEPARTMENT. — Seventy kilometres of rapid electric service. Season tickets with nonstop service. Special terms for large parties: parcel delivery; service to all points. Electric transport of goods and building material at cheap rates. Goods from interior should be despatched "Companhia City, Desvio Saboc".

MOTOR OMNIBUS SERVICES: Town Avenues and Beach.

Telegraphic Address "CIDADE" — Santos

ALL ABOUT COFFEE

(Second and Revised Edition)
By William H. Ukers, M. A.

Editor, *The Tea and Coffee Trade Journal*; Author, *All About Tea, Coffee Merchandising, Coffee in a Nutshell*

The Fruit of Thirty Years' Experience with the Trade and Study of the Subject.

FEATURES :

Complete Reference Table of All Coffees — A Coffee Chronology of 562 Dates — A Coffee Thesaurus — A Coffee Bibliography Information on the Chemistry and Pharmacology of Coffee, Coffee Cultivation, Preparations, and Marketing — World Production and consumption of Coffee — History of the Coffee Houses of the Old and New Worlds — 1,000 illustrations — Four Pages in color.

Issued in One Volume of 38 chapters, 832 pages, approximately 500,000 words, covering all the important Historical, Technical, Scientific, Commercial, Social and Artistic phases of the subject.

Bound in Buckram — stamped in gold
Price, \$15, postpaid. Cash with Order
U. S. currency
Published by

THE TEA AND COFFEE TRADE JOURNAL CO.
79 Wall Street, New York

THE

"SOUTH AMERICAN JOURNAL"
and Brazil & River Plate Mail

(Established 1863)

This weekly paper has for long been the recognised organ for Latin-American affairs. It covers all aspects, makes a special feature of trade and finance, is free of any Government or other control and deals with Brazil in a fearless but friendly manner, bringing a long experience to bear upon any subject.

Circulates throughout the countries of Latin-America, Great Britain, the United States, Europe, Japan, etc.

The prepaid terms of subscription are
40/- per annum in Great Britain
45/- per annum elsewhere.

Communications respecting advertisements or subscriptions should be addressed to: —

MANAGER, PUBLISHING DEPARTMENT,
"SOUTH AMERICAN JOURNAL"

4 BROAD STREET PLACE, LONDON, E. C. 2

Subscription Form: To WILEMAN'S BRAZILIAN REVIEW

P. O. BOX 809 — Rio de Janeiro

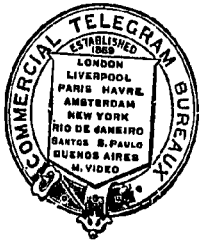
Please enter my/our subscription to WILEMAN'S BRAZILIAN REVIEW for one Year beginning for which I/we enclose order

TERMS (POST FREE)
IN BRAZIL RS: 100\$000
ELSEWHERE £3/0/0

— Payable in advance

ADVERTISEMENT RATES
ON REQUEST.
SINGLE COPIES RS: 2\$000

THE COMMERCIAL TELEGRAM BUREAU



Supply Official Reports and Quotations of all the leading American, European, Brazilian and Indian Markets to the Cotton, Coffee, Grain, Produce, Provision, Petroleum and Sugar Trades of Europe and America: also re-transmit Private Despatches by Cable to multiple addresses in Europe and North and South

Subscribers furnished with Intermediate or Closing American Reports at night by special arrangements with London, Liverpool, or Amsterdam offices.

FOR TERMS &c., APPLY TO CHIEF OFFICE:

COMTELBURO, LIMITED

11 TOKENHOUSE YARD, LONDON E. C. 2

(open day and night)

Registered Telegraphic Address: "COMTELBURO" Teleph: London Metropolitan 8244 (4 lines)

LONDON: 30 Mincing Lane, E. C. 3.
LIVERPOOL: 7, Rumbold Str. 1983 Centr. (two).
NEW YORK: 66-70 Beaver Street, Hanover 2-4450
AMSTERDAM: Spulstraat 4-3268Z.
HAVRE: Rue Victor Hugo, 136
ANTWERP: Rue des Douze Mois, 19, 11852
PARÁ: Avenida Castilhos França, 71, Caixa Postal
CEARA: Rua Major Facundo 680: Caixa Postal 198
PERNAMBUCO: Rua Vis. Itaparica, 207, Caixa 299

BAHIA: Rua Portugal, 16, Caixa 203
VICTORIA: Rua 1º de Março, 46; Sala 8, C. Postal 40
RIO DE JANEIRO: Av. R. Branco, 33-1º, C. 266
SANTOS: Rua Cidade de Toledo, 7, Caixa 243
S. PAULO: Rua 3 de Dezembro, 48, 1º, Caixa 1281
CURITYBA: Av. João Pessoa, 71, 2º and., C. Postal 79
RIO GRANDE: Rua Riachuelo, 199; Caixa Postal 92
PORTO ALEGRE: R. Siqueira Campos 903, C. P. 500
B. AIRES: Bolsa de Comercio, 239, tel. U. T. 3-2340.

THE BRITISH EXPORT GAZETTE

GREAT BRITAIN'S LEADING EXPORT JOURNAL

FOUNDED 1892

MERCHANTS, IMPORTERS, and AGENTS in Brazil who are interested in the Trade of Great Britain should subscribe regularly to this old-established and influential publication. It provides its Subscribers with the most exhaustive and exclusive commercial news service and is the connecting link between British Manufacturers and Merchants in all parts of the world.

The Annual Subscription is 10s. or 25s. for Three Years, which includes unlimited use of its Information and Agency Departments

The British Export Gazette is invaluable to Buyers of British Goods and all who want to represent British firms in Brazil

Head Offices: 76, FINSBURY PAVEMENT, LONDON, E. C. 2.

CAMBIO



TITULOS

Private & Public Titles transacted on all Brazilian markets. Sale of Coffee to the D. N. C., São Paulo & Santos dealers. Editors of the "Revista Financeira Levy", Boletim Comercial, Suplemento Levy (Dailies). Money transactions, Foreign & National on all markets of the world. Agents & Representatives in Rio de Janeiro, Bahia, Porto Alegre, Recife, Pará and all foreign Cities.

STOCK BROKERS

RUA 15 DE NOVEMBRO, 59
SANTOS

CUSTOM HOUSE BROKERAGE OFFICE
Telegrams: "YVEL"

RUA ALVARES PENTEADO, 20
SAO PAULO

Furness Prince Line



NEW YORK-SOUTH AMERICA

Luxurious accommodation - First class passengers only

RIO - NEW YORK 13 DAYS

NORTHERN PRINCE

Will Sail 20th. August
For Trinidad and New York

SOUTHERN PRINCE

Due From New York 21st. August
For Santos, Montevideo & Buenos Aires

Round trip rates for limited periods considerably reduced

TRIANGULAR TOURS - NEW YORK - EUROPE - BRAZIL - AT SPECIAL RATES

Houlder Brothers & Co. (Brazil) Ltd

Rua do Commercio, 35 - SANTOS

Tel. 2001 & 3728

Avenida Rio Branco, 63-67, 1st Floor -- Rio de Janeiro

Tel. 23-0754 and 23-0588

LAMPOR & HOLT LINE LIMITED.

BRAZIL SERVICE

FROM GLASGOW AND LIVERPOOL to: Bahia, Rio de Janeiro, Santos, Rio Grande do Sul, Pelotas & Porto Alegre. From New York and South Atlantic Ports to Brazil and the River Plate.

SAILINGS	From Glasgow	From Liverpool	From New York	Due Rio	Due Santos
BALZAC	18th. July	25th. July	—	15th. August	17th. August
BONHEUR	15th. August	22nd. August	—	12th. Sept.	14th. Sept.
SWINBURNE	—	—	15th. August	4th. Sept.	5th. Sept.
ANKARA	—	—	15th. August	—	15th. Sept.
BALFE	12th. Sept.	19th. Sept.	—	10th. October	12th. October

HOMeward

BROWNING
BRUYERE
BALZAC
SHERIDAN
BAYARD
BONHEUR

SAILINGS

leaves Santos 19th. Aug., Rio 21st. Aug. for Bahia & Liverpool
leaves Santos 31st. August for Liverpool.
leaves Santos 10th. Sept. for Liverpool
leaves Santos 22nd. Augst for N. York & Philadelphia
leaves Santos 12th. September for New York
leaves Santos 7th. October, Rio 9th. October for Liverpool.

Cargo taken on through Bills of Lading, via Rio de Janeiro, to Aracaju, Victoria, Antonina, Paranaguá, São Francisco and Santa Catharina

All steamers, outwards and homewards, have accommodation available for Saloon Passengers at economic rates.

Santos:
F. S. HAMPSHIRE & Co. Letd.
Bahia:
F. STEVENSON & Co. Ltd.
Pernambuco:
WILLIAMS & Co.

Apply to: —

Lampor & Holt Line Limited

AV. RIO BRANCO, 46-47 and.
Tel. 23-1980

RIO DE JANEIRO

S. Paulo:
F. S. HAMPSHIRE & Co. Ltd.
Buenos Aires:
LAMPOR & HOLT LINE Ltd.
Montevideo:
M. REAL AZUA

Wileman's Brazilian Review

A WEEKLY JOURNAL OF TRADE, FINANCE, ECONOMICS AND SHIPPING

VOL. 29

RIO DE JANEIRO 17th. AUGUST, 1936

N.º 7

OBITUARY

Mr. GEORGE HOWARD

It is with deep regret that we record the death of Mr. George Howard, chief engineer of Messrs. Wilson, Sons & Co., Limited, who succumbed after a long illness, on Wednesday last, August 12th.

Mr. Howard was engineer of this concern for 34 years, and his demise will leave a sad gap, felt not only in Rio, but also amongst his many friends in distant parts of the world.

Notes

The weekly session of the Federal Council of Council of Overseas Trade was held on Monday last, under the presidency of Minister Sebastião Sampaio; Dr. José Carlos de Macedo Soares, Minister of State for Foreign Affairs, and Dr. Arthur de Souza Costa, Minister of Finance, attended. The Council welcomed Sr. José Mendes de Oliveira Castro, nominated by the President of the Republic to occupy the position of Sr. Alberto Bôavista during this gentleman's absence in Europe, as Director of the Exchange Control Department of the Banco do Brasil.

Before the regular session, a convocation of the United Chambers of the Council was held to receive Dr. Alvaro Maia, Governor of the State of Amazonas; this gentleman read an interesting report on the economic situation of the State, emphasising the progress of each particular industry, as a result of which the Council passed a vote liberating, or rather recommending the liberation of exchange on balata and nuts. Dr. Alvaro Maia also spoke on the difficulties of cargo and passenger transport in the vast Amazon States, stating that the construction of an aviation base at Belem (Pará) would solve at least one of the many problems. In closing, Dr. Maia said what so many other persons have said — that he was convinced that the Federal Council of Overseas Trade is a live body working not only for the commercial expansion of the country, but also for the all important question of protection of national industry.

Passing to the regular plenary session, the minutes of the 104th. meeting having been approved, the weekly subject matter was read, including the following items: Memorial from the Commercial Association of Amazonas requesting the liberation of exchange on balata and nuts; Telegram from the S. A. Fabrica Votorantim, S. Paulo, informing that this concern is concordant with the re-establishment of the 35% official exchange quota on exports of cotton seed cake and oil, but contrary to the liberation of raw cotton; Memorandum from Sr. Francisco Fiore on the possibilities of exporting green vegetables;

Communication from the Federation of Matté of Curitiba, Paraná expounding the reasons for non-compliance with the wishes of other parties regarding the creation of the National Matté Institute; and other matters.

Speaking on part of the subject matter, Sr. Raul Leite insisted on immediate steps being taken by the Council to attend the request of Messrs. Martins & Canuto, of Pernambuco, in that a parcel of 125 bags of coffee which have been in the warehouse at Genoa for over a year be withdrawn immediately and placed on the market. The cause of this ridiculous delay lies in the impossibility or unwillingness of the importers to obtain the necessary licence. This is a repetition of similar occurrences previously registered at Italian ports, notably to Rio coffee exporters.

In his verbal report, Minister Sebastião Sampaio, Executive Director of the Council, advised that the President of the Republic had ratified the decision of the Council, reducing the official exchange quota on dry and salted hides from 35 to 20%. At the suggestion of the Council this is only an experimental step, and will be modified if market conditions so indicate. Further, the Council's decision in regard to a National Exhibition to be held in 1937 had also met with the approval of the President, the project as passed having already been directed to the competent Departments of the Ministry of Labour, Industry and Commerce, whence the original programme emanated. The Minister also mentioned the nomination of Sra. Maria de Lourdes Lima Modiano to the post of Secretary of the Federal Council during the absence of Consul Aluizio de Magalhães.

Minister Sebastião Sampaio spoke on the high cost of imported books, reviews, and magazines, etc., suggesting that the Council should study this question with a view either to a reduction of duties, or a similar concession as that recently granted on imports of newsprint and paper for magazines and journals. This matter is to be voted on today.

Continuing, Minister Sebastião Sampaio nominated a Committee composed of Srs. Valentim Bouças, Euvaldo Lodi, and Franklin de Almeida, for the investigation of the problem of transport in certain regions, in accordance with the problem of transport in certain regions, in accordance with the motion of Sr. Valentim Bouças at a previous session. This Counsellor founded his motion on the repeated reports of Sr. Euvaldo Lodi on the vicissitudes of the Central do Brazil Railway, due to the deterioration of rolling stock and locomotives, and the general depreciation of track, and, further, on the results of the meeting held at the Foreign Office on the previous Thursday (August 6th.) at which the Secretaries of Agriculture attended. Sr. Bouças emphasised that the chief preoccupations of the Secretaries of Agriculture had been production first, and then transport: Sr. Luiz Piza Sobrinho, the São Paulo Secretary, had succeeded in rousing Sr. João Maria de Lacerda to request an enquiry, the results to be submitted to the consideration of the President of the Republic. Further, Sr. Bouças maintained, and produced evidence in confirmation, that the present rise in prices of foodstuffs of prime necessity was at least partly due to difficulties of transport, it being necessary, therefore, to

Wileman's Brazilian Review

Established 1898

OFFICES: R. THEOPHILO OTTONI, 41, 3.º ANDAR
RIO DE JANEIRO

Telephone: 23-1354 - Caixa do Correlo (P. O. Box) 809
Tel. Address: "REVIEW", Riojaneiro.

Redactor Responsavel: V. S. Coelho.
Redactor Commercial: Oscar Loup.
Redac. e Administração: R. Theophilo Ottoni, 41-3º

Subscriptions (Payable in Advance): —
Brazil, 100\$000 per annum. Abroad £3 per annum.
Separate copies 2\$000. Back Number 2\$500 per copy.

ADVERTISING RATES ON APPLICATION

AGENTS:

NEW YORK: — "The Tea and Coffee Trade Journal"
79, Wall Street.
COPENHAGEN: — "The Scandinavian Shipping Gazette",
38 Vestre Boulevard.

Notice: — The Editor is not responsible for Correspondence or Articles signed with the writer's name or initials, or with a pseudonym, or that are marked "Communicated". The Editor must likewise not necessarily be held in agreement with the views therein contained or with the mode of expression.

Original articles submitted for publication must be considered, unless otherwise arranged, exclusive to and the sole property of the Review.

In accordance with the Brazilian Press Law, no correspondence or contribution will be published in this Review unless authenticated by the date, name, and address of the contributor, though not necessarily for publication.

RIO CAPE LINE LTD.

Direct Cargo Service from Rio de Janeiro
and Santos to
Cape Town, Mossel Bay, Algoa Bay, East
London, Durban, and Lourenço Marques

THE JAPANESE STEAMER

Manila Maru

(Under Contract)

Sailing 9th. September

Followed by

Africa Maru

Sailing 6th. October

For further particulars apply to:
HOULDER BROTHERS & Co. (BRAZIL) LTD.
Agents for the Rio Cape Line, Ltd.

AVENIDA RIO BRANCO, 63/67 1st. floor
Telephones 23-0754 and 23-0588

RIO DE JANEIRO

MAILS

Sailing dates checked with Steamship Agencies on Friday previous to printing.

TO EUROPE

FROM	DEP. RIO	VESSEL	Destina-tion	Phone Rio
B. A. . . .	23	Arlanza	S'mpton	23-2161
B. A. . . .	25	Ant. Delfino	Hamburg	23-5947
B. A. . . .	25	H. Chieflain	Hamburg	23-5947
B. A. . . .	1	Gen. Artigas	London	23-2161
B. A. . . .	1	Alcantara	S'impton	23-2161
B. A. . . .	1	Avila Star	London	23-5988

FROM EUROPE

FROM	Arrives RIO	VESSEL	DEP. Rio	Destina-tion	Phone Rio
Hamburg	20	Gen. San Martin	20	B. A.	23-5947
Trieste	20	Neptunia	20	B. A.	23-5840
S'mpton	21	Alcantara	21	B. A.	23-2161
London	31	H. Brigade	31	B. A.	23-2161
Genoa	1	Augustus	1	B. A.	23-5840

TO U. S. A.:

FROM	DEP. RIO	VESSEL	Destina-tion	Phone Rio
B. A.	20	Northern Prince	New York	23-0754
B. A.	27	Western World	New York	23-2000
B. A.	29	Delmundo	N. Orleans	23-4134

FROM U. S. A.:

FROM	Arrives RIO	VESSEL	DEP. Rio	Destina-tion	Phone Rio
New York	21	Southern Prince	21	B. A.	23-0754
New York	28	Southern Cross	28	B. A.	23-2000

TO SOUTH AFRICA & JAPAN

FROM	DEP. RIO	VESSEL	Destina-tion	Phone Rio
B. A.	10	Manila Maru	Yokohama	23-5988

TO SOUTH AFRICA & JAPAN

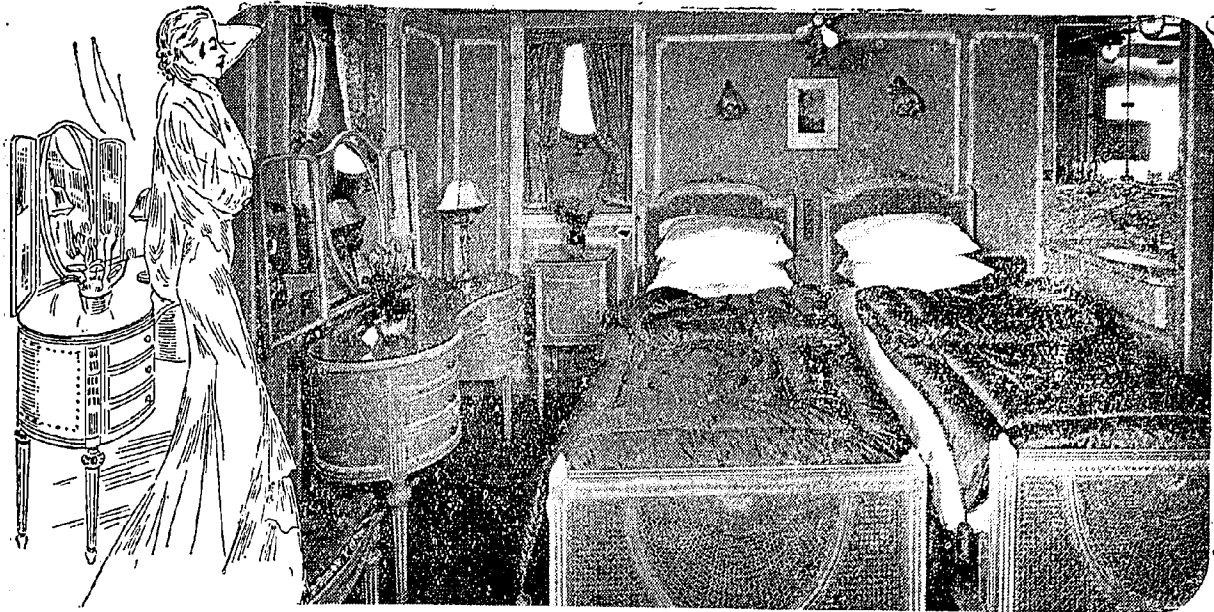
FROM	Arrives RIO	VESSEL	DEP. Rio	Destina-tion	Phone Rio
Kobe	27	Rio de J. Maru	27	B. A.	23-5988

AIR-MAIL SERVICE

For Closing Hours of Mails consult Agencies.

FROM	Due Rio	SERVICE	DEP. Rio	Destination
B. A.	16	Panair	17	U. S. A.
—	—	Condor	17	Porto Alegre
U. S. A.	17	Panair	—	—
P. Alegre	17	Panair	18	Belem
Europe	18	Air France	18	B. A.
P. Alegre	19	Condor	—	—
B. A.	20	Condor	20	Europe
—	—	Panair	20	Fortaleza
U. S. A.	20	Panair	21	B. A.
—	—	Panair	21	Manaos & U. S. A.
Belem	21	Condor	21	Porto Alegre
Manaos	21	Panair	22	Porto Alegre
P. Alegre	22	Condor	22	Belem
Fortaleza	22	Panair	—	—
B. A.	23	Air France	23	Europe
Europe	23	Condor	23	B.A.

All B.A. services make connection with West Coast planes.



Design for Comfort

Here is the modern idea in travel, a de luxe bedroom as complete and beautiful as you would find in the great hotels of Europe. On Blue Star ships no detail of your personal comfort has been overlooked.

NORTHBOUND

Avila Star Sept. 1st.
Andalucia Star Sept. 29th.

SOUTHBOUND

Andalucia Star Sept. 7th.
Almeda Star Sept. 21st.

Blue Star Line

★ THE LINE OF COMFORT - SERVICE - COURTESY ★

nominate without further delay a Committee to investigate the situation of the Railways operating throughout the country, presenting reports and suggestions on findings, and eventually organising a financial programme to cover the necessary reforms and reconstructions in accordance with the greatest economic interests of the country. The Committee nominated has already commenced studies.

Terminating his verbal report, Minister Sebastião Sampaio read a long telegram from Consul Aluizio de Magalhães, transmitting various appeals from Pernambuco exporters which are to be the object of enquiries by a Special Committee.

In regard to the tour of the permanent Secretary of the Council among the State Capitals, with the object of enhancing the collaboration of the State Chambers of Propaganda and Commercial Expansion with the Council, it is announced that Consul Aluizio de Magalhães was in Aracaju, State of Sergipe, where he was received at a meeting of the local powers. After fully explaining his mission, Consul Magalhães appealed to the assembly for a closer co-operation with the mother organ in Rio, to the greater interests of the country. The Governor of the State, Sr. Heronides de Carvalho, also spoke, introducing the emissary of the Council. As far as can be ascertained the mission of Consul Magalhães has been completely successful to date.

Sr. Arthur Torres Filho, speaking on the question of developing the national consumption of "alcool-motor" fuel mixture moved that the Technological Institute of the

Ministry of Labour, Industry and Commerce should be approached for information regarding the various by-products of alcohol, particularly that denominated "Carbiol", which appears to have most satisfactory properties.

Dr. Arthur de Souza Costa gave a short exposition on the export of lard and the rise in price of this product on national markets; in view of the urgency of this matter, it was decided that a definite vote should be cast at the next session.

Finally, the Council approved unanimously the motion of Sr. João Maria de Lacerda, that Brazil should be represented at the Paris Exhibition of Technical Arts to be held next year. Certain restrictions were voted in this connection, though these are not of any material importance.

Samples Fair..

There have been several sessions of the Consultive Council of the Samples Fair to be held in October and November this year, under the auspices

of the Directorate of Tourism and Propaganda of the Prefecture. The duration of the Fair has been definitely fixed as from October 12th. to November 15th., two important dates in Brazil, the first being the anniversary of the discovery of America, and the second of the proclamation of the Republic.

Propaganda has already commenced in a collective manner, circulars having been despatched, and many posters distributed to Consulates and Propaganda Bureaux all over the world. The Brazilian Consul in London reports

favourably on developments in England, and mentions that an official organ of the Government recently published a descriptive article on the proposed Fair; also, several firms have displayed interest, replies having been received to the circulars.

Locally, intensive work is being carried out in preparing the site of the Fair, and several contracts have already been closed for large spaces in the various Houses. There is no definite fixture as regards the State of São Paulo House as yet; it is expected, however, that this will, as usual, be amongst the finest representations. The amusement park is not expected to offer many new features, though there is more time for organisation this year.

The Leopoldina Railway has notified that the same abatements as those granted in previous years will again be extended to passengers, as also the freight reductions on exhibits.

The Art exhibits in the Palácio das Festas are being chosen with a view to their international rather than purely national interest, as a larger contingent of foreign visitors is expected this year. Facilities for overseas visitors will include a special visa on passports, and possibly reduced ocean fares and hotel rates, though these are at present only tentative possibilities.

The Permanent Committee of Exhibitions and Fairs has approached the President of the Republic regarding the expedition by Consuls abroad of special visas on documents covering shipments of exhibits to the Fair, and it is expected that the Ministry of Foreign Affairs will facilitate this as far as possible.

Other work of the organising Committee includes an appeal to the numerous railways in the country for special freight concessions on a par with those offered by the Leopoldina; the same request has been passed to the Companies operating Air services, and all national navigation Lines, as well as many foreign passenger carrying Companies. The Departamento Nacional do Café has been approached regarding the erection of a suitable House or Pavilion more worthy of its prestige, as the existing stand is considered rather inferior to those representing the Department in overseas Fairs; there is little doubt that this request will be complied with by the D. N. C.

Further news from Consulates and Propaganda Bureaux abroad includes an advice from Dakar that several French West African concerns are interested in exhibiting, having already commenced negotiations for space. From Buenos Aires comes the news that the two most important Argentine Meat Associations will probably collaborate, as also the national Wheat interests. One important flour concern has already undertaken to supply one ton of flour daily for the manufacture of bread for free distribution. Another Argentine sweetmeat Company will install a small model factory making various types of sweets in view of the public; rumour has it that there will be a free distribution here too, though we fear that a model factory would not meet the consumption. Other Argentine exhibits will include cereals, farinaceous foods and by products, dairy products, such as cheeses, butter, cream, etc., and many typically national exhibits which have not yet been booked definitely.

expired at the end of July, and there was some anxiety amongst those directly interested in Brazilian affairs lest a lengthy lapse should occur. All fears are now calmed, as the agreement signed on the evening of August 11th. is entirely satisfactory to all parties.

The provisional agreement was effected by an exchange of notes between the Brazilian Ambassador, Dr. Regis de Oliveira, and the Foreign Office. Briefly, the provisional agreement establishes that the relations of the agreement which expired on July 31st. shall continue unchanged; unconditional and unrestricted most-favoured-nation treatment is to be applied in tariff charges, imposts and levies within the two countries, and any other taxes. Further, any restrictions or contingency quotas later imposed by either country will be applied strictly under most-favoured-nation conditions, and subject to due notice, denunciation being optional to either party. Clauses appear regarding exchange which provide that no discrimination shall be applied in regard to the furnishing of exchange cover.

The English note contained an adenda to the effect that countries under mandate or other such indirect rule are considered, for the purposes of the agreement, as colonies, and must therefore be regarded as exceptions to the clauses affecting them. The Brazilian note also provided that those South American countries which at present receive special concessions in relations with Brazil must likewise be considered as exceptional to the terms of the agreement. Further clauses provide that Brazil would be invited to co-operate in the meat supply of the United Kingdom at a future date, and that special consideration would be given in due course to the duties on oranges.

A further provisional understanding was also signed between Brazil and Newfoundland, there being no alteration in existing conditions.

The general impression both in Great Britain and in Brazil is one of complete satisfaction, it being considered that the agreements reached, which are virtually new in principle, are perhaps the most advantageous under present-day conditions. The Brazilian Ambassador in London is widely applauded in the local daily Press, as also Sr. Barbosa Carneiro, Brazilian Commercial Attaché in London.

D. N. C.

Destruction of coffee in Brazil during the second half of July, according to

Statistics of the Departamento Nacional do Café, amounted to 333,583 bags, compared with 269,463 bags during the first half of the month, and the usual monthly average during the first half of this year of about 150,000 bags. The total for July is therefore 603,046, and since the beginning of destruction, 37,191,315 bags.

Further statistics of the Department divulge the estimated crops as follows:

São Paulo	13,297,600
Minas Geraes	4,596,400
Espírito Santo	1,751,100
Bio de Janeiro	953,500
Paraná	307,400
Bahia	300,300
Pernambuco	231,900
Goyaz	70,000
Total	21,508,200

Since the beginning of this month there have been hopes current that the provisional agreement between England and Brazil would be signed

Anglo-Brazilian Agreement

without very much delay, as the commercial relations under the understanding denounced on December 31st. last

SKF

QUALITY FIRST

The PERNAMBUCO TRAMWAYS & POWER COMPANY LTD., after having made full studies and investigations into the performance of STAL turbo-generators installed in recent years in the electric plants of other progressive utility companies in this country, noteworthy among which installations are those in the Usina of the Cia. Energia Electrica Rio Grandense at Porto Alegre (3,600 KW) and in the steam plant of the Cia. Força e Luz Nordeste do Brasil at Maceió, (750 KW) decided to purchase from the Companhia **SKF** do Brazil a new STAL-ASEA turbo-generator, which with its output of

8.500 KW

will be

**THE LARGEST STEAM TURBINE
IN BRAZIL.**

Established in Brazil for 21 years, it has always been our policy to offer only **QUALITY** products, even though this meant losing business in cases where price alone was decisive of the choice of material. The success realised hitherto and the reputation we enjoy are ample proofs that we are following the right path.

Five **QUALITY** Marks:

SKF - ASEA - STAL - PENTA - DE LAVAL

Companhia **SKF** do Brazil

RIO DE JANEIRO

141, Quitanda

RECIFE

287, M. de Olinda

BAHIA

3, Cons. Dantas

SÃO PAULO

162, Flor. de Abreu

PORTO ALEGRE

316, Vol. da Patria

BRITISH FINANCE AND COMMERCE

By Robert MacKay

Such shipbuilding as is now in progress throughout the world is chiefly under the various "scrap and build" schemes of the different governments. The efforts of the powers chiefly concerned in building and operating merchant fleets are no longer directed along the lines of mere expansion. Quality is now the desideratum, and the aim of the shipbuilding and shipowning countries is the building and operating of the most up-to-date merchant fleet.

Tables are from time to time published by Lloyds showing the age of the ships of the merchant fleets of the different countries. The obsolescence of merchant fleets is clearly shown in these statistics which reveal that this factor is one that is beginning to react to the advantage of Great Britain. A well-built ship, steamer or motorship may be serviceable over fifteen years of age, but obviously the expense of running such ships is higher than in the case of newer vessels. Let us look more closely at this matter of obsolescence and contrast the age of British ships, not with those of any single country (which would be individual), but with world tonnage. First let us take the year 1925, one of the more prosperous of post-War years. In that year 25.5 per cent of British ships were under five years of age and 44.6 per cent between five and fifteen years old. In the same year 21.0 per cent of world tonnage was under five years and 45.2 per cent between five and fifteen years old. In other words there was a higher percentage of brand-new British vessels than there were brand new vessels of other lands, while in the case of medium-aged vessels the position was about the same. Of more aged vessels, those of twentyfive years and more, Great Britain had 8.5 per cent, but world tonnage exceeding twentyfive years was 13.2 per cent of the whole.

So much for the position about a decade ago, in one of the best pre-slump years. Let us now take the position ten years later, after the worst years of the world depression had passed. The ravages of that depression are immediately seen in the figure for new British vessels. For those under five years the percentage had dropped to 8.5, exactly one-third. In the case of world shipping, vessels in this category were also about a third of their earlier percentage, that is, they were 7.9 per cent. In the case of British vessels between five and fifteen years they constituted more than half the total merchant fleet, being 52.4 per cent. But world tonnage of this medium-aged category had dropped to 39.1 per cent. In 1935 British ships over twentyfive years of age were 7.5 per cent of the whole merchant fleet, but world tonnage in this category amounted to 17.2 per cent, that is, an increase in the aged vessels.

In June 1936 the percentage of brand-new British ships (under five years) had increased to 9.5 per cent, an increase of 1 per cent. But world tonnage of this brand-new class was 7.7 per cent of the whole, a fall of 0.2 per cent. In the 5-15 category Britain had had a fall in the previous twelve-month of 2.9 per cent — from 52.4 to 49.5 per cent, but world tonnage in the same category and period had fallen by 4.4 per cent — from 39.1 to 34.7 per cent. The proportion of British and world vessels over twentyfive years had risen by a few decimal points last June as compared with June, 1935. British vessels of

THIRTY FIVE YEARS AGO

Extract "The from Brazilian Review" of
20th. August, 1901

Local Items — Government has decided to take part in the Pan-American Congress at Mexico and has asked for a credit of 150:000\$ for expenses.

— By the R. M. S. S. "Magdalena", leaving on the 21st. inst., £300,000 will be remitted to the Treasury Agent in London.

— Passengers travelling between Rio and Nietheroy complain bitterly of the treatment they receive from the Companhia Cantareira, and especially of the steamer "Comendador Lagé", which, they state, is unsuitable to carry large number of passengers travelling between these points.

— In a message to Congress the President of the Republic has asked for authorisation to cancel the contract with the National Brazilian Harbour Co. Limited, for the construction of harbour works at the port of Jaraguá, in the State of Alagoas, and to pay the said Company the sum of 2,000 Contos.

(Ed. Note. — Work on this port was recommenced last month, i. e. July 1936).

Bahia — A concession has been granted for electric lighting of the town of São Felix, and the working of an elevator between the lower part and the suburb or Maritima.

— The city fathers of Jequié propose to build a Cotton Mill in which the raw cotton of the Municipal Department is not only to be worked up into cloth free, gratis and for nothing, but to supply the seeds from which the cotton is to be grown.

The Amazon — The Municipality of Pará bought up during the month of July Apolices of its last issue of 500 Contos to the amount of 100 Contos.

Rio Grande do Sul — Several butter factories have been started at Rio Grande, which should be successful if they can avoid the adulteration in the consuming markets which has proved so injurious to the Minas industry.

— A boot-seller of Rio Grande has hit upon a novel mode of extending his trade. In an advertisement published in most of the local papers, he states that taking into consideration the want of ready money and general breakdown, he is ready to barter his own goods against any other of whatever kind that represent intrinsic value.

EXCHANGE:

£ — 26\$630
\$ — 4\$867

— Coffee loaded during the crop up to August. 16th.
1,787,213 bags.

this category numbered 7.9 per cent, a rise of 0.4 per cent, at the same time world tonnage of this class rose by 0.6 per cent.

These figures clearly show that the "scrap and build" policy of the British Government, which grants subsidies to forward it, is leading to a newer mercantile fleet for Great Britain, and is at the same time helping the depressed trade of shipbuilding. When world overseas trade recovers to its old (i. e. pre-slump) volume, the best equipped and newest fleet should rightly secure the major portion of such business as is going.



MONDAY JULY 27

THE OPENING DAY OF OUR TRADITIONAL
HALF YEARLY SALE

Owing to the Late Season We are Offering Our High
Class Stock Of WINTER GOODS AT SUBSTAN-
TIAL REDUCTIONS IN PRICE.

FOR MEN — Overcoats, Suits Underwear, Hosiery
Shirts, Neckwear, Travelling Rugs etc.

FOR WOMEN — Winter Fashions, Furs, Under-
wear Millinery Dressing Gowns etc.

FOR THE HOME — Blankets, Quilts, Carpets
Furniture & Furnishing, Domestic Articles.

Every Article in our Huge Stock is Reduced for
this Occasion.

MAPPIN STORES

S. PAULO - Praça Patriarcha. 2
RIO - Praia Botafogo. 360

LONDON FINANCIAL POSITION

AUGUST 7th, 1936

Rather more attention has been given of late to European politics, partly because the civil war in Spain has been followed by troubles in Greece, involving the declaration of martial law there. With respect to Spain, France has taken a much stronger attitude than expected in pressing for neutrality on the part of the other powers, thus, in effect, joining hands with Great Britain in this matter, while it is reassuring that Italy has accepted, in principle, the policy of non-participation. There are reports of the extent to which Russia is helping or will help the existing Spanish Government in its struggle with the insurgents. It is recognised, of course, that the situation has dangerous possibilities, so that some curtailment of Stock Exchange business is not surprising, especially as we are now at the height of the holiday season.

The monetary position is unaltered with some discussion in banking circles of the connection between a cheap money policy (managed or manipulated by the authorities) and the trade revival. In these discussions the relative static state of export business in this country at a time when imports are growing, is not ignored, but the views expressed upon this point are somewhat contradictory. The note circulation of the Bank of England has reached a new high record of £454,406,397 and so also has the total coin and bullion. The latter now amounts to £244,004,028, equivalent to £397,580,000 at the current price of gold, thus representing a cover of over 87 per cent for the note circulation. The fact that no further gold purchases have been made during the last few days suggests a belief on the part of the authorities that for the present the note circulation has reached its peak. With the return of notes as the ho-

liday season ends the position should become more normal — unless foreign hoarding of our paper currency should assume bigger dimensions.

Evidently this is a possibility that cannot be left out of account because of the chance of a fresh financial crisis in France. The issue of "baby bonds" there, made for the dual purpose of providing the Government with much needed funds and of dislodging part of the enormous sums hoarded by the French people, must apparently be written down a failure, for at a recent date the subscriptions only slightly exceeded the equivalent of £30,000,000. There has been rather significant weakness of late in French francs, though any violent movement in the exchange rate is prevented by the exercise of strong control. A fresh crisis in France would almost certainly reopen the question of devaluation of the franc or the prohibition of gold exports, in other words, the abandonment of the present gold standard.

Although our Stock markets have lost the buoyancy that characterised them a short time ago the undertone is very firm. One feature has been the strong investment demand for the newer Corporation loans which previously stood at a considerable discount but in practically all cases now command a premium. In part this is due to the greater assurance of the continuance of cheap money.

The rising tendency of commodity prices is attracting some attention, and in the case of wheat it is regarded as a bull point for Argentine rails, as it is thought that it may improve the exchange situation. Consequently, a fair recovery has taken place in this group, which is not surprising in view of the low level to which the preference stocks, in particular, had fallen. There is no recovery in Brazilian rails; instead, an almost steady sagging away of prices has to be recorded, with the result that during this week Leopoldina 4 per cent Debenture has marked down

T O L E T

Small Office in Business Centre

Moderate rent.

Apply c/o "Wileman's Brazilian Review"

to 3¼ and the 6½ per cent issue 47, while Leopoldina Terminal 5 per cent debts, have changed hands at 32. Among foreign bonds Spanish Fours are a nominal market at about 47½, with business at little over 45, while Greek issues have been marked down on the political developments in the country.

Our industrial shares are now quieter, but the market is really very firm. Activity in new capital issues has subsided with the advent of the holiday season, but is likely to be resumed in the Autumn, barring unfavourable political developments. An indication of the activity in home industry is provided by the railway traffics, which are now showing substantial increases, indeed, in one case the latest figures are the best since 1929 — the peak year for English railways. Confidence in the future is indicated by the large orders now being placed by some of the companies for new equipment. This department of the Stock Exchange, therefore, has lately displayed much more strength, and would be better still but for the uncertainty as to whether the railwaymen will accept the wages award of the National Tribunal, viz: a restoration of 1¼ per cent of the remaining 2½ per cent cut, with better pay for overtime. As the agreement respecting rates payable to local authorities will mean substantial savings to the companies the men may be more inclined than otherwise to hold out for better terms.

In the more speculative markets South African mining shares are rather quieter. Copper issues reflect the decision to reduce the percentage of production restriction — in other words, increase the output. The negotiations for a renewal of the international Zinc Cartel, however, have broken down. Certain oil shares have been supported by Continental buying, but Mexican Eagles are kept back by the report of labour troubles on the property.


LONDON PRODUCE NOTES

LONDON, August 7th.

The week under review has been broken by the August holidays, and as is usually the case during this period, business on the London Produce markets was on the small side.

SUGAR — The sugar section was decidedly uninteresting and the only business in raws consisted of a few parcel lots of August/September shipment to Liverpool at 4/6 per cwt. c. i. f. A little better off-take of refined sorts was reported, but not sufficient to cause any change in prices. It is believed that distributors of refined sugars are letting their stocks run low and this would indicate that very shortly there will be another period of good buying by the trade. Refiners, however, appear to be well placed as regards supplies of raws to meet such a contingency. On the futures market, August tenders were well absorbed and this kept values steady. The weather conditions in the beet growing areas vary considerably. The severe drought in the United States is only affecting the beet crop in one or two districts and is having no effect on either the New York or London markets. The United Kingdom crops are having too much rain and unless conditions improve the output will suffer. On the Continent crops are expected to be normal, for although rain has been heavy, there has been sufficient sunshine to provide the necessary corrective.

RUBBER — The Plantation rubber market was very quiet and prices eased about ½d. per lb. to 7½d. for smoked sheet spot. Forward positions were more or less neglected, but the trade demand for spot and near delivery on home and Continental account was fairly good. Pará grades were dearer, fine hard spot, advancing to 10½d. per lb.

TEA — As usual the first week in August is a holiday in the tea market, while only small offerings are expected at next week's auctions.

There has been a little more doing in the spot coffee market on export account. New season's mild coffees have not yet begun to arrive, but it is hoped that they will meet a better demand and realise higher prices, in sympathy with the improvement in Brazilian kinds.

COCOA — At the moment there is very little doing in cocoa, but values remain very steady.

JUTE — A sharp improvement was recorded in jute values, following higher advices from Calcutta where more settled conditions were reported in the jute manufacturing section. The upward movement was also helped by some "bear" covering, and the market closed firm at fully 15/- per ton advance. First Marks, old crop, made £17.10.0. and new crop, £17.12.6, per ton c. i. f.

TIMBER — Conditions were rather quieter following the holiday but values of all mahogany of character remained fully steady. Recent arrivals included a full cargo of West African timber of various descriptions, including a fair quantity of mahogany, both from Nigerian and Ivory Coast centres, logs as well as converted stocks. Altogether 288 logs of mahogany, with 2,699 pieces of mahogany and walnut lumber arrived. In addition, the vessel brought 69 logs of obeche, iroko and mansonia, with 135 logs of about half a dozen other varieties.

FRUIT — Oranges: There was an active demand for all descriptions with Brazilian, boxes, 150, quoted 15s. to 15s.3d.; 176, 15s. to 15s.6d.; 200, 16s. to 16s.6d.; 216, 16s.6d. to 17s.; 252, 16s.9d. to 17s.3d.; 288, 18s. to 18s.6d.; 324, 17s. d. to

BAHIA COCOA MARKET REPORT

BAHIA, 6th. of August, 1936

STATISTICS:		(Provisional figures)	Bags
Receipts from 1st to 31/7/36		248,476	
Shipments do do		249,652	
Stocks on 31st July		37,499	
Receipts from 1st to 4th. inst		81,407	118,906
Shipments do do			83,302
Stocks on 4th inst			35,604

Stocks in Ilhéos on 31st July amounted to 11,950 bags ashore. Three steamers were then loading, namely: s/s "Trione" "Frost" and "Janna", and the former sailed on the 3rd. inst. with 30,000 bags on board; the s/s "Janna" is already in this port in order to finish her loading, as she had great difficulty in passing the Ilhéos bar.

CROP & WEATHER: —

Since our last report the weather was very bad during 4 days, all along the coast and also in the producing zones, but since yesterday it has improved a great deal. The news as regards the crop from October to February is very divergent; in each district, each farmer has a different opinion and the majority predict normal harvestings until 30th. September whereas from October onwards harvestings and arrivals are expected to be weak. Finally, one estimates the total crop yield to be 10 to 15% less than last year, i. e. about 1,800,000 bags from 1/5/36 until 30/4/37, however, only at the end of this month we shall be able to give some more definite information in this respect.

MARKET & PRICES: —

Locally and in the interior in general prices continue very high and the fluctuations in overseas markets have had no influence here owing to large coverings and speculations.

QUOTATIONS: —

We quote to-day on Superior basis c. & f.

New York	Sept/Dec. ship.	6½ c. per lb.
A' Dam Opt	Aug./Dec. do	29/- per 50 kilos
c. i. f. B. Aires	Aug./Sept do	m8n-50 ^m per 100 kilos

EXCHANGE: —

Firm throughout the week, closing to-day at the following rates.

	Sterling	U. S. Dollar
Official rate	Rs. 578540	Rs. 118440
Free rate	Rs. 858000	Rs. 168970

CORRÊA RIBEIRO & CIA.



*Good Spirits
await Good Company*

DEWAR'S

"White Label"



18s.6d.; 360,17s.3d. to 18s.6d.; South African, Navels, 11s. 6d. to 19s. and Seedlings 13s.9d. to 18s.6d. Bananas: Canary 11s. to 17s. per crate; Brazilian 6s. to 7s. and Jamaica 6s. to 6s.6d. per 10 dozen. Imports from Brazil last week comprised 29,000 bunches of bananas and 24,000 boxes of oranges.

HIDES — Dry River Plates were firmer with B. A. Americanos quoted at 7½ and dry Sierra Cordobas at 7½d. per lb. Other South American hides were firmer but not to the extent of River Plates. Sales have been made of Barretos ox at 4½d., Santos ox at 4d. and Mendes seconds at 3½d. Dry Bahias have been offered at 6½d., and dry Cuyabanos at 5/16d., L. W., the last price of 6 3/16d, having been refused for the latter sort.

FOREIGN TRADE OF BRAZIL
EXPORTS BY CLASS AND ARTICLE (From Official Returns)
SIX MONTHS — JANUARY TO JUNE

NOTE: — Volume in tons of 1.000 Kilos. except coffee in 1.000 bags, oranges in cases, and bananas in bunches

ARTICLES	QUANTITY			CONTOS OF REIS			£ 1.000 (gold)		
	1934	1935	1936	1934	1935	1936	1934	1935	1936
CLASS I									
<i>Animals and their products</i>									
Lard	435	8.098	5.550	630	17.691	15.527	6	150	122
Preserved meat	4.865	8.189	13.189	13.852	24.015	37.468	135	199	294
Frozen and chilled meat	29.594	32.406	44.744	31.687	36.504	57.187	313	305	449
Hides	26.775	25.897	25.643	48.269	51.784	68.773	478	433	539
Wool	1.555	3.925	5.351	7.738	21.421	39.336	80	190	308
Skins	2.323	1.953	2.336	24.133	22.936	31.456	240	196	247
Tallow	2.417	14.683	4.894	3.094	18.275	8.369	30	150	66
Jerked beef	253	263	484	391	430	1.057	4	4	8
Sundry	12.242	12.476	16.991	12.273	15.325	20.104	120	125	157
Total class I	80.459	107.890	119.182	142.067	208.381	279.272	1.466	1.752	2.190
CLASS II									
<i>Minerals and their products</i>									
Manganese (ore)	2.300	12.112	50.748	134	1.296	5.104	1	10	40
Precious stones	4	282	417	3	3
Sundry	10.034	19.406	69.115	1.474	2.999	7.075	15	26	56
Total class II	12.334	31.518	119.863	1.612	4.577	12.596	16	39	99
CLASS III									
<i>Vegetables and their products</i>									
Raw cotton	40.137	70.751	73.021	125.125	334.339	309.904	1,218	2,817	2,439
Rice	13.562	27.528	30.635	10.357	19.022	18.499	100	156	145
Sugar	17.350	53.112	86.276	10.160	29.983	41.364	106	240	323
Rubber	5.408	5.801	6.604	16.408	15.372	29.904	163	133	234
Cocoa (raw)	28.212	26.546	29.748	36.714	38.927	45.918	370	347	360
Coffee (raw)	7.626.417	6.888.951	7.131.702	1.142.221	983.409	1.013.047	11,443	8,348	7,943
Canauha wax	4.182	4.529	5.028	17.376	27.465	56.951	175	235	446
Bran, all kinds	25.541	59.203	60.087	4.606	12.134	13.090	46	102	103
Manioc meal	4.754	11.742	5.652	1.566	4.514	2.120	15	38	17
Bananas	3.867.191	4.970.892	5.497.037	10.014	12.564	13.153	99	107	103
Brazil nuts shelled	1.489	2.343	1.718	4.111	10.116	14.131	40	81	111
Oranges	896.479	909.721	1.061.643	19.042	20.656	22.881	178	160	180
Fruits and nuts (edible unenumerated)	2.273	3.486	3.577	1.301	1.652	1.830	13	13	14
Castor seed	13.558	19.558	43.343	6.040	10.610	31.823	61	93	249
Cotton seed	19.352	62.087	43.832	5.386	15.848	9.438	54	136	74
Brazil nuts	17.805	18.403	19.555	18.333	23.369	34.207	174	189	269
Babassu	3.165	17.940	2.140	19.508	18	153
Oil producing seeds unenumerated	255	1.504	2.669	215	831	2.922	2	7	23
Tobacco	14.847	14.689	10.908	25.374	29.178	21.364	248	241	168
Male (Brazilian tea)	28.938	26.215	30.163	32.076	28.771	29.549	325	253	231
Timber	61.190	83.024	88.311	12.702	17.328	19.105	126	153	150
Maize or Indian corn	5	25.673	1.320	1	7.096	230	65	2
Cakes	25.156	47.402	64.877	6.798	11.719	19.377	67	100	152
Sundry	9.251	21.798	28.439	10.528	27.459	51.128	103	229	400
Total class III	882.230	1.11.233	1.228.941	1.516.454	1.684.502	1.821.443	15,126	14,261	14,289
Total Specified	943.496	1.196.961	1.353.441	1.635.858	1.851.677	2.035.004	16,310	15,672	15,965
Total Unspecified	31.527	53.680	114.545	24.275	45.783	78.307	238	380	613
GRAND TOTAL	975.023	1.250.641	1.467.986	1.660.113	1.897.460	2.113.311	16,548	16,052	16,578

AVERAGE VALUE PER UNIT OF MERCHANDISE EXPORTED

ARTICLE	Unit.	MILREIS		STERLING GOLD	
		1935	1936	1935 £ s	1936 £ s
Lard	Ton.	2.185	2.798	18-10	22-0
Preserved Meat	"	2.933	2.840	24-5	22-5
Frozen & Chilled Meat	"	1.126	1.278	9-8	10-1
Hides	"	2.000	2.682	16-14	21-0
Wool	"	5.457	7.352	48-7	57-11
Skins	"	11.744	13.463	100-3	105-11
Tallow	"	1.245	1.710	10-4	13-8
Jerked Beef	"	1.636	2.086	13-12	17-3
Manganese Ore	"	107	101	0-17	-16
Precious Stones	—				
Raw Cotton	Ton.	4.725	4.244	39-16	33-8
Rice	"	691	604	5-13	4-15
Sugar	"	565	479	4-10	3-15
Rubber	"	2.650	4.528	22-17	47-19
Cocoa	"	1.466	1.210	13-1	12-2
Coffee	Bag.	143	142	1-4	1-2
Carnauba Wax	Ton.	6.064	11.326	51-18	88-14
Brar, all kinds	"	205	218	1-14	1-14
Manioc Meal	"	384	375	3-5	2-19
Bananas	1,000 Bun.	2.528	2.393	21-9	18-15
Brazil Nuts, shelled	Ton.	4.317	8.223	34-12	64-11
Oranges	Case	23	22	0-3	0-4
Fruits and Nuts, edible unenumerated	Ton.	474	512	3-15	4-0
Castor Seed	"	542	734	4-15	5-15
Cotton Seed	"	255	215	2-4	1-14
Brazil Nuts	"	1.270	1.749	10-6	13-15
Babassu	"	676	1.087	5-12	8-10
Oil Producing seeds, unenumerated	"	553	1.095	4-15	8-12
Tobacco	"	1.986	1.959	16-8	15-8
Maté, (Brazilian Tea)	"	1.097	980	9-13	7-13
Timber	"	209	216	1-17	1-14
Maize or Indian Corn	"	276	174	2-11	1-7
Cakes	"	247	299	2-2	2-7



MUNSON S.S. LINE

The only North-American Luxurious Liners
— on the "BRAZIL-NEW YORK" route —

21 Thousand Tons each — First and Tourist Class Accommodation — Special prices
for TRIANGULAR VOYAGES "RIO-NEW YORK-EUROPE-RIO" or
"RIO-EUROPE-NEW YORK-RIO"

To New York

To Buenos Aires

SAILINGS FROM RIO:-	WESTERN WORLD ..	August 27th.	August 28th.
	SOUTHERN CROSS ..	September 10th.	September 11th.
	PAN AMERICA	September 24th.	September 26th.
	AMERICAN LEGION ..	October 8th.	

These modern liners are newly reconditioned and renovated

FOR RATES & FURTHER INFORMATION: **The Federal Express Co.**
RIO DE JANEIRO - SANTOS - SÃO PAULO

THE TRADE BALANCE OF BRASIL

VOLUME — DEADWEIGHT IN TONS OF 1.000 KILOS

YEAR 1935:	Imports	Exports	Balance in favour or against Exp.
January	308.992	192.552 —	116.440
February	494.243	198.504 —	295.739
March	346.347	196.538 —	149.809
April	362.640	199.423 —	163.217
May	340.048	219.070 —	120.978
June	215.005	244.555 +	29.550
July	365.897	237.296 —	128.601
August	382.294	250.935 —	131.359
September	414.784	244.983 —	169.801
October	394.577	242.436 —	152.141
November	360.484	266.877 —	93.607
December	352.962	268.593 —	84.369
TOTAL, 1935	4.338.273	2.761.762 —	1.576.511

YEAR 1936:	Imports	Exports	Balance in favour or against Exp.
January	337.991	253.600 —	84.391
February	267.099	218.210 —	48.889
March	319.293	261.183 —	58.110
April	340.024	231.018 —	109.006
May	404.867	249.772 —	155.095
June	478.918	254.203 —	224.715
TOTAL, 1936	2.148.192	1.467.986 —	680.206

VALUE IN CONTOS OF REIS

YEAR 1935:	Import	Exports	Balance in favour or against Exp.
January	188.503	281.468 +	92.965
February	288.744	310.513 +	21.769
March	308.580	301.276 —	7.304
April	304.681	289.128 —	15.553
May	344.737	325.895 —	18.842
June	276.075	389.180 +	113.105
July	367.053	361.858 —	5.195
August	349.377	358.847 +	9.470
September	353.937	366.891 +	12.954
October	334.881	386.874 +	51.993
November	375.241	348.874 —	26.367
December	364.108	383.204 +	19.096
TOTAL 1935	3.855.917	4.104.008 +	248.091

YEAR 1936:	Imports	Exports	Balance in favour or against Exp.
January	344.378	391.261 +	46.883
February	279.672	325.290 +	45.618
March	363.806	322.676 —	41.130
April	330.608	331.302 +	694
May	376.712	351.829 —	24.883
June	328.085	390.953 +	62.868
TOTAL, 1936	2.023.261	2.113.311 —	90.050

IRMÃOS ARAUJO

Typewriters, Calculating and Addressing
Machines

GENERAL OVERHAULING & REPAIRING
WORK GUARANTEED ONE YEAR
STEEL FURNITURE — FOR OFFICES

RUA SÃO PEDRO, 57 — TEL. 23-3319

WILEMAN'S BRAZILIAN REVIEW

Circulates in 33 different countries

THE STANDARD PUBLICATION FOR BRAZILIAN
STATISTICSquoted by Government Departments
the world over.

VALUE IN £ 1.000 (GOLD)

(ooo's omitted)

YEAR 1935:	Imports	Exports	Balance in favour or against Exp.
January	1.968	2.936 +	971
February	2.332	2.716 +	385
March	2.324	2.538 +	214
April	2.228	2.371 +	144
May	2.322	2.517 +	194
June	1.834	2.966 +	1.132
July	2.420	2.748 +	328
August	2.276	2.689 +	413
September	2.378	2.816 +	438
October	2.336	3.056 +	714
November	2.549	2.701 +	152
December	2.463	2.955 +	492
TOTAL, 1935	27.430	33.010 +	5.580

YEAR 1936:

January	2.366	3.051 +	685
February	1.966	2.573 +	612
March	2.484	2.508 +	24
April	2.258	2.572 +	314
May	2.596	2.756 +	160
June	2.301	3.113 +	812
TOTAL, 1936	13.971	16.578 +	2.607

VALUE IN \$1,000 U. S. CURRENCY

(ooo's omitted)

YEAR 1935:	Imports	Exports	Balance in favour or against Exp.
January	15.898	23.739 +	7.841
February	19.161	22.294 +	3.133
March	19.164	20.683 +	1.519
April	18.285	19.327 +	1.042
May	19.039	20.497 +	1.458
June	15.018	24.216 +	9.198
July	19.945	22.498 +	2.553
August	18.748	22.114 +	3.366
September	19.447	22.977 +	3.530
October	19.170	24.926 +	5.756
November	20.839	22.012 +	1.173
December	20.081	24.092 +	4.011
TOTAL, 1935	224.795	269.375 +	44.580

YEAR 1936:

JANUARY	19.474	25.054 +	5.580
February	16.290	21.279 +	4.989
March	20.505	20.624 +	119
April	18.492	21.089 +	2.597
May	21.244	22.565 +	1.321
June	18.836	25.413 +	6.577
TOTAL, 1936	114.841	136.024 +	21.183

DISCRIMINATION OF COFFEE FROM OTHER EXPORTS

	Coffee			Other Exports Total		
	1,000	£1,000	%	£1,000	%	£,000
	Bags	Gold		Gold	Gold	
January . . .	1.074	1.668	56.7	1,271	43.3	2,939
February . . .	1.024	1.329	48.9	1,387	51.1	2,716
March . . .	1.050	1.272	50.1	1,266	49.0	2,538
April . . .	1.125	1,273	53.6	1,099	46.4	2,372
May . . .	1.296	1,393	55.3	1,124	44.7	2,517
June . . .	1.320	1,413	47.6	1,556	52.4	2,969
July . . .	1.230	1,316	47.9	1,432	52.1	2,748
August . . .	1.316	1,358	50.5	1,331	49.5	2,689
September . . .	1.392	1,487	53.1	1,329	46.9	2,816
October . . .	1.595	1,759	57.7	1,291	42.3	3,050
November . . .	1.383	1,476	54.6	1,228	45.4	2,704
December . . .	1.515	1,630	55.2	1,325	44.8	2,955
TOTAL . . .	15,329	17,374	52.5	15,636	47.5	33,016

YEAR 1936:

January . . .	1.493	1,670	54.7	1,381	45.3	3,051
February . . .	1.320	1,478	57.3	1,100	42.7	2,578
March . . .	1.148	1,257	50.1	1,251	49.9	2,598
April . . .	1.049	1,146	44.6	1,426	55.4	2,572
May . . .	1.160	1,288	46.7	1,468	53.3	2,756
June . . .	962	1,104	35.5	2,009	64.5	3,113
TOTAL . . .	7,132	7,943	47.9	8,635	52.1	16,578

AVERAGE VALUE PER BAG OF 60 KLOS OF COFFEE
JANUARY - JUNE

	Milreis	£. s. d.
1936	144\$103	1- 3- 0
1935	140\$323	1- 1- 0
1934	150\$187	1- 6- 0
1933	134\$784	1-13- 0
1932	150\$892	2- 6- 0



EXPORTS OF COTTON

JANUARY TO JUNE

ORIGIN	Tons.		Value in Contos of reis	
	1935	1936	1935	1936
Belem (Pará)	276	96	1,319	337
São Luiz (Maranhão)	2,227	701	9,895	2,347
Ilha do Cajueiro	2,519	1,560	10,350	5,461
Amarracão	38	173
Camocim	95	460
Fortaleza	12,131	8,306	53,293	29,876
Aracaty	179	3	777	13
Arcia Branca	734	121	2,999	459
Natal	4,847	4,040	22,896	17,221
Cabedello	12,932	8,147	58,026	31,870
Recife (Pernambuco)	8,350	8,343	35,936	33,033
Maceió	2,827	757	12,856	2,961
Penedo	71	204	327	808
Aracaju'	244	101	1,101	366
Bahia	123	580
Rio de Janeiro	606	109	3,097	414
Santos	22,552	40,533	120,254	184,738
Total	70,751	73,021	334,339	309,904

DESTINATION

Germany	41,772	8,539	197,855	33,933
China	349	1,571
Denmark	12	54
U. S. A.	99	97	524	442
France	5,479	10,180	25,149	43,533
Filand	39	91	217	419
U. Kingdom	13,829	23,990	64,221	99,082
Spain	22	99
Holland	1,398	2,834	6,975	12,585
Hong Kong	23	107
India	46	206
Italy	1,474	3,654	7,279	16,589
Japan	1,532	15,909	8,344	71,204
Norway	4	19
Poland	246	1,103	1,254	4,653
Portugal	1,580	937	7,092	3,815
Sweden	26	115	142	534
Belgium	3,273	5,120	15,268	21,081

Total 70,751 73,021 334,339 309,904

Equivalent in £ gold 2,816,710 2,438,703

The Prudential
ASSURANCE CO. LTD.
OF LONDON

Fire, Riots, Civil Commotions,
etc.

Assets in all Branches Exceed

£ 280,000,000

FRISBEE & FREIRE LTD.

34 - RUA THEOPHILO OTTONI - 34

RIO DE JANEIRO

EXCHANGE

OFFICIAL MARKET RATES

Rio de Janeiro	Buy 1936 Aug. 14th.	Sell 1936	Sell 1936
London	57.540		
New York	11.440		
Paris	745		
Berlin	3.520		
Brussels	1.935		
Buenos Aires	3.140		
Lisbon	520		
Madrid	1.555		
Milan	895		
Montevideo	5.300		
Zurich	3.735		
Amsterdam	7.795		

The quotations are no longer existent, and the columns will be with drawn shortly.

FREE MARKET RATES

Rio de Janeiro	Buy 1936 Aug. 14th.	Sell 1936 Aug. 14th.	Sell 1936 Aug. 7th.
London	85.300	85.700	85.700
New York	17.000	17.060	17.080
Paris	1.100	1.120	1.126
Berlin	—	5.300	5.300
Brussels	—	2.880	2.880
Buenos Aires	4.710	4.770	4.770
Lisbon	—	780	780
Madrid	—	—	—
Milan	—	—	—
Montevideo	—	8.800	8.800
Zurich	—	5.560	5.570
Amsterdam	—	11.570	11.610

LONDON RATES

London on:—	1936 Aug. 14th.	1936 Aug. 7th.
New York Dollar	5.02½	5.02
Paris Franc	76.37	76.12
Berlin Mark	12.50	12.49
Amsterdam Florin	7.41	7.39
Brussels Belga	29.85	29.80
Berne Franc	15.43	15.40
Lisbon Escudo	110	110½
Madrid Peseta	39.00	38.00
Genoa Lira	63.87	63.75

OSWALDO ARAGÃO DA SILVEIRA

Official Exchange & Share Broker

G. FRASER
E. SAUTTER

RUA DA CANDELARIA, 28-2º andar
Tel.: 23-1033-1034, 23-5630-5995

P. O. Box 210

Telegraphic Address "FRASER"

RIO DE JANEIRO

Casa Bancaria Moneró

AV. RIO BRANCO, 49 — RIO — Phones 23 (0074) (0174)

The most important concern for exchange of any currency.

Drafts at the most favourable rates on all countries.

Correspondents throughout the world.

F. MONERÓ & CIA. LTDA.

cables: MONERO Peterson Int. Code 3rd. ed.

MONEY MARKET

DISCOUNT RATES

	1936 Aug. 14th.	1936 Aug. 7th.
Bank of England	2%	2%
" France	3½%	3½%
" Italy	5%	5%
" Spain	6%	6%
" Germany	4%	4%
London Market	9/16%	9/16
N York Market	3/16%	3/16%

RATES FOR NOTES

	Buy 1936 Aug. 14th.	Sell 1936 Aug. 14th.	Sell 1936 Aug. 7th.
£ Sterling	86.300	86.700	86.800
\$ U. S. A.	17.200	17.300	17.250
\$ Canadá	16.800	17.100	17.000
Franc (France)	1.135	1.150	1.150
Franc (Belgium)	570	590	585
Franc (Swiss)	5.500	5.600	5.630
Mark (German)	4.200	4.500	4.500
Mark (Finnish)	—	—	—
Crown (C. Slovak)	—	—	—
Crown (Denmark)	3.770	3.850	3.850
Crown (Sweden)	4.370	4.450	4.450
Crown (Norway)	4.250	4.350	4.340
Dinar (Yugoslavia)	—	—	—
Escudo (Portugal)	785	800	800
Florim (Holland)	11.400	11.600	11.600
Lei (Rumania)	—	—	—
Lira (Italy)	1.175	1.200	1.180
Peseta (Spain)	1.500	1.750	1.800
Peso (Argentine)	4.700	4.730	4.730
Peso (Bolivia)	—	—	—
Peso (Chile)	560	580	—
Peso (Paraguay)	—	—	—
Peso (Uruguay)	8.500	8.650	8.600

FREE MARKET OPENING RATES OF BANK OF LONDON & SOUTH AMERICA LTD.

	£	\$
Aug. 8th.	85.800	17.070
" 10th.	85.800	17.070
" 11th.	85.800	17.080
" 12th.	85.800	17.080
" 13th.	85.800	17.080
" 14th.	85.900	17.100

MARKET QUOTATIONS

**RIO DE JANEIRO STOCK
(OFFERS) AT THE
RIO STOCK EXCHANGE**

Friday, 14th. August. 1936

Reajustamento c/2 coupons	724\$	720\$
Ditto, c/4 coupons	760\$	—
Ditto, c/5 coupons	790\$	785\$
Uniformisadas	—	758\$
Sundry issues nom.	755\$	753\$
Dito, to bearer	755\$	753\$
Ferrovias R a i l - ways Bonds	—	1:005\$
Treasury Obligation (1921)	—	1:006\$
Dito, 1932	—	1:010\$
Dito, 500\$ 8%	470\$	435\$
Rio 100\$, 4%	112\$	110\$
Ditto, 1:000\$ 8%	—	840\$
O Minas 1:000\$ 9%	918\$	915\$
Ditto, 7%	760\$	755\$
Ditto, 200\$ 5%	146\$	145\$
Municipal Loan 6%	—	—
1906, bearer	144\$	—
Ditto, 1904, E 20, bearr	—	425\$
Dito, nom.	—	400\$
Ditto, 1917	143\$	—
Ditto, 1914	143\$	141\$
Ditto, 1920, bearer	140\$	138\$
Ditto, dec. 3.264	164\$	162\$
Ditto, 1931 (c/j)	167\$	165\$
Dito, dec. 2097	—	163\$
Ditto, 1999	164\$	—
Ditto, 2093, 8%	185\$	183\$
Ditto, 1948 7%	164\$	160\$
Bello Horizonte	700\$	695\$
Dec. 1.550 7%	164\$	—
Dec. 1535	—	160\$
Dito, 1933 bearer	—	180\$
Petropolis 200\$ (1918)	185\$	178\$
Porto Alegre 500\$ 8%	480\$	460\$
Esp: Santo 1:000\$ 8%	820\$	800\$

Banks:—

Bôa Vista	650\$	600\$
Brasil	385\$	380\$
Portuguez nom.	99\$	—
Dito, bearer	—	100\$
Commercio	—	202\$
Mercantil	—	460\$
Funcionarios	50\$	—
C. R. Minas	320\$	290\$

Railways:

M. S. Jeronymo	98\$	96\$
Paulista	215\$	214\$

Insurance: —

Previdente	3:000\$	2:850\$
Argos Fluminense	3:000\$	2:800\$
Sagres	450\$	380\$
Confiança	380\$	—
Varejistas	—	1:500\$
Integridade	—	310\$
Garantia	—	100\$
Guanabara	—	150\$

Textiles:—

Nova America	280\$	260\$
Brasil Industrial	—	325\$
Corcovado	—	60\$
S. Pedro	—	470\$
Manufactora	—	205\$
America Fabril	—	220\$
Alliança	60\$	40\$
Confiança	100\$	—
Petropolitana	180\$	170\$

THE STOCK MARKET

LONDON

	1936 Aug. 7th.	1936 Aug. 14th.	1935 Aug. 14th.
Brazil Funding 185%	88.15.0	89.15.0	68.10.0
Ditto, 1914 new	69.0.0	70.0.0	53.0.0
Conversion, 1940, 4%	16.0.0	16.0.0	11.0.0
Ditto 1908, 5%	—	—	—
Federal District 5%	—	—	—
Anglo-South Am. Bk. Ltd. ord.	22.10.0	23.0.0	18.0.0
Brazilian Traction, ord.	—	—	0.7.0
S. Paulo Coffee Estate Co. Ltd. 7%	11.87	12.00	8.50
Cables Wireless Telg. Co. Ltd.	92.0.0	93.5.0	79.0.0
Wir. Tel. Co. Ltd. 4% Dec. Stk. Red	6.2.6	6.5.0	8.5.0
Braz. Warrant A'gy & F'nce Co. Ltd. ord.	104.0.0	105.0.0	105.0.0
Rio de Jan. City Imp. Co. Ltd., ord.	0.1.3	0.1.3	0.1.6
Imperial Chemical Ind. Ltd.	0.13.6	0.13.6	0.8.9
S. Paulo Railway	1.19.10½	2.0.0	1.16.0
Leopoldina Ry, 6½% Term. Dec. 1933	53.0.0	56.10.0	41.0.0
Rio de Janeiro Flour Mills	55.0.0	45.0.0	46.0.0
Bank of London & South America	1.14.9	1.15.0	1.13.9
Royal Mail	5.2.6	5.0.0	4.0.0
British War Loan 3½% 1927-47	106.12.6	106.15.0	106.15.0
Consols 2½%	85.0.0	85.2.6	86.7.6

NEW YORK

	Aug. 7th.	Aug. 14th.
American & Foreign Power Co., In	7.25	7.25
American Telephone & Telegraph Co.	174.00	175.12
Armour & Co. of Illinois "A" Stock	4.87	5.37
Atlantic Refining Co.	28.25	28.12
Brazilian Traction L. & P. Co., Ltd.	—	—
Corn Products Refining Co.	68.00	66.00
Electric Bond & Share Co.	24.50	23.37
General Electric Company	44.62	47.00
General Motors Company	69.12	66.25
Internat'l Business Machines Corp.	160.87	165.00
International Cement Corp	56.00	54.25
International Harvester Co.	82.25	81.25
Radio Corporation of America	11.12	11.00
Standard Oil Co. of New Jersey	62.75	64.37
Texas Company	38.87	39.12
United States Steel Corp.	62.25	67.62
Westinghouse Electric & Manuf. Co.	139.00	142.00

BANKS

Chase National Bank, N. Y.	51.00	48.00
National City Bank, N. Y.	46.00	43.00
Royal Bank of Canada	173.00	177.00

Cometa	125\$	—
Progreso Industrial	290\$	260\$

Sundry:—

Artefactos de Borracha	180\$	150\$
Docas de Santos nom	213\$	210\$
Ditto, bearer	230\$	229\$
Mestre Blatgé	208\$	205\$
Docas da Bahia	7\$	3\$
Sul Mineira de Ele- ctricidade	—	200\$
Nickel do Brasil	160\$	—
Hollerith	—	1:260\$
Luz Stearica	210\$	198\$
Mercado Municipal	240\$	225\$
Fab. Cimento Portland	510\$	500\$

Debentures: —

Tecido Alliança	—	150\$
Usinas Nacionaes	—	205\$
Docas de Santos	195\$	191\$
Bellas Artes	—	210\$
A. Paulista	196\$	195\$
Edificadora	130\$	125\$
Progreso e Ind. do Brasil	195\$	190\$
Manufactora	215\$	—
Hotel Palace	203\$	201\$
Mercado Municipal	—	216\$
Nova America	—	1:050\$
Carris P. Alegre	—	200\$
Santa Helena	170\$	110\$

**YOU MUST HAVE
A COPY OF**



**OBTAINABLE AT
ROYAL MAIL OFFICES**

Price 10\$000

MOTOR CARS

Brazilian Imports — 5 months 1936

MARKS	NUMBER
Adler	64
Auburn	1
Buick	98
Cadillac	8
Cavalier	1
Chevrolet	1,741
Chrysler	65
Crusador	2
D. K. W.	155
De Soto	19
Dictator	56
Dodge	122

Fiat	2
Packard	74
Ford	2,296
G. Paige	106
Garant	4
Hanomag	23
Hillaman	2
Horch	4
Hudson	96
Hupmobile	4
Lancia	1
Lafayette	1
La Salle	25
Lincoln	70
Nash	9
Oldsmobile	121
Opel	126

Pontiac	62
Plymouth	108
President	5
Réo	8
Studebaker	2
Sturn	2
Stueck	1
Terraplane	47
Wanderer	26
Unenumerated	4

Imports — 5 months 1936		
Ditto	Ditto 1935	5.561
Ditto	Ditto 1934	4.162
		2.534

Note: See N.º 3 Page 99
(To be continued)

BANK OF BRAZIL

Balance, Sheets as at 1st. August. 1936

ASSETS

Securities rediscounted	612.202:357\$200
Bank of Brazil current account	424:180\$900
General Expenses	10:780\$000
<hr/>	
	612.637:318\$100

LIABILITIES

National Treasury	590.000:000\$000
Reserve Fund	13.794:081\$400
Rediscounts	8.843:236\$700
<hr/>	
	612.637:318\$100

Balance Sheets as at 8th. August 1936

ASSETS

Securities rediscounted	633.175:451\$100
Bank of Brazil current account	1.240:211\$100
General Expenses	10:900\$000
<hr/>	
	634.426:562\$200

LIABILITIES

National Treasury	610.000:000\$000
Reserve Fund	13.794:081\$400
Rediscounts	10.632:480\$800
<hr/>	
	634.426:562\$200

DELTA LINE

"FLOATING BUNGALOWS"

Owned and Operated by

Mississippi Shipping Co. Inc

RIO to NEW ORLEANS in 18 days
With one stop at Victoria

Passengers — Mail — Freight

NEXT SAILINGS:

Southbound

"DELVALLE"	Sept. 9 1936
"DELNORTE"	Sept. 23 1936

Northbound

"DELMUNDO"	August 29 1936
"DELSUD"	Sept. 12 1936

For further particulars apply to

American Steamship Agencies Co. Inc.

Rua da Quitanda, 202 RUA 15 de Novembro, 176
RIO DE JANEIRO SANTOS

Or at our General Passenger Agents

Serviço Int. de Viagens G. BERNSTORFF

American Republics Line

OPERATED BY

C. H. SPRAGUE & SON, Inc.

BOSTON, Mass.

For the

United States Shipping Board

Merchant Fleet Corporation

Regular Cargo Steamer Service
between

THE ATLANTIC COAST PORTS
of the United States

BRAZIL and the RIVER PLATE

General Agents for Brazil

American Steamship Agencies Co. Inc.

Rua 15 de Novembro, 176 | Rua da Quitanda, 202
Santos Rio de Janeiro

Cable Address: "Amagencies"

COFFEE PRICES CURRENT

Rio de Janeiro, 14th. August, 1936

COFFEE SERVICE

	8	10	11	12	13	14
Rio spot N.º 7	148800	148800	148800	148800	148800	148800
" futures						
August	148325	148450	148300	148225	148325	148300
September	148275	148525	148400	148275	148275	148175
October	148275	148550	148350	148250	148275	148100
November	148375	148625	148475	148325	148375	148175
December	148450	148750	148525	148325	148450	148325
January	148275	148650	148350	148275	148275	148125
Sales	12,500	13,000	13,500	37,000	12,500	15,000
Santos spot N.º 4	188500	188500	188500	188500	188500	188500
" futures						
August	188150	188300	188250	188275	188250	188175
September	178050	188300	188025	188025	188050	188000
October	178850	188200	178975	178900	178950	178775
November	178850	188200	178900	178900	178950	178725
December	178925	188175	178800	178900	178900	178725
January	178775	178950	178775	178800	178800	178650
Sales	9,000	14,000	11,000	16,500	11,500	9,500
New York Rio spot N.º 6						
" " Santos " N.º 7		8 1/2	8 1/2	8 1/2	8 1/2	8 1/2
" " Santos " N.º 4		8	8	8	8	8
" " futures		9 5/8	9 5/8	9 5/8	9 5/8	9 5/8
September		8 3/8	8 3/8	8 3/8	8 3/8	8 3/8
December		4.34	4.93	4.83	4.7	4.74
March		5.05	5.03	4.95	4.97	4.81
May		5.01	4.99	4.91	4.93	4.92
Sales		6.44	6.35	6.26	6.31	6.31
New contract						
May		5.01	4.99	4.91	4.93	4.92
Sales		6.44	6.35	6.26	6.31	6.31
Havre futures		15,000	5,000	5,000	10,000	5,000
September	128 1/2	129	129 1/2	128	128 3/4	128 1/4
December	134	134 3/4	135 1/2	133	134	133 3/4
March	138 1/4	139	139 1/2	137	138 1/4	138
May	141	141 3/4	142 1/2	140	141 1/2	141
Sales	8,000	11,000	30,000	25,000	15,000	5,000
Hamburg futures						
September	39	39	39	39	39	39
December	39	39	39	39	39	39
March	39	39	39	39	39	39
May	39	39	39	39	39	39
Sales	Nil	Nil	Nil	Nil	Nil	Nil

COFFEE STATISTICS

ENTRIES

Week ending August, 8, 1936 - In bags of 60 kilos

	For the week ended		For the crop
	Aug 8 1936	Aug 1 1936	Aug 8 1936
RIO:			
By Central and Leopoldina Ry	25,985	16,760	123,694
Warehouses	14,800	17,547	100,133
TOTAL	40,845	34,406	225,852
Total Santos	111,469	204,709	909,462
Total - Rio & Santos	152,254	239,175	1,135,314

The total entries by different S. Paulo Railways for the crop to Aug-1, 8, 1936

	Past Jundiaby Per	Sorocabana and others	Total at S. Paulo	Total at Santos
1936/1937	253,761	643,730	897,491	909,462



JOHNSON LINE

Rederiaktiebolaget Nordstjernan Stockholm (Sweden)

REGULAR SERVICE BY MOTOR VESSELS from SWEDEN, POLAND, BALTIC PORTS and VICE-VERSA

SAILINGS	For the River Plate	For Swede. and Poland
Argentina	—	24th. Aug.
Pedro Christophersen	—	6th. Sept.
Uruguay	22nd. Aug.	22nd. Sept.
Suecia	24th. Aug.	—
San Francisco	30th. Aug.	27th. Sept.
Santos	7th. Sept.	10th. Oct.

M. S. ARGENTINA

due to arrive on the 24th. August — Sails for ANTWERP, ROTTERDAM, SWEDEN & POLAND

M. S. URUGUAY

due to arrive on the 22nd. September — Sails for HAVRE, ANTWERP, ROTTERDAM, SWEDEN, POLAND

The Vessels dispose of accommodations for limited number of First-Class Passengers. For further particulars apply to the Agents: — Williams & Co., Pernambuco, P. O. Box 245 Guendevile & Co., Bahia, P. O. B. 203 Johnson Line Agencies, Santos, P. O. Box 404 Hard, Rand & Co., Victoria, P. O. Box 125 Wigg Brothers — Rio Grande — Porto Alegre and/or

LUIZ CAMPOS FILHOS & CIA. Rua 1º de Março, 117 — Phones: 23-2896 & 23-3337 RIO DE JANEIRO

COFFEE LOADED (EMBARQUES)

Week ending August 8, 1936 - In bags of 60 kilos

	During Week ended		For the crop
	Aug. 8 1936	Aug. 1 1936	Aug. 8 1936
Rio	28.497	39.038	180.020
Santos	104.513	172.188	853.348
Total - Rio & Santos	133.010	211.226	1.033.377

SALES OF COFFEE (DECLARED)

Week ending August, 8, 1936 - In bags of 60 kilos

	During Week ended		For the crop
	Aug. 8 1936	Aug. 1 1936	Aug. 8 1936
Rio	21.452	20.075	122.221
Santos	185.000	186.000	800.000
Total - Rio & Santos	206.452	206.075	931.221

Value of Coffee Cleared for Foreign Ports

Week ending August, 8, 1936 - In bags of 60 kilos

PORTS	AUG. 8 1936		AUG. 1 1936		CROP TO AUG. 8, 1936	
	Bags	£	Bags	£	Bags	£
Rio	19096	21651	27016	29837	134970	147768
Santos	204300	262658	174478	219216	768318	966024
TOTAL 1936/1937	223486	284309	201494	249053	903288	1113792

Our Own Stock

IN BAGS OF 60 KILOS

Rio stock on Aug. 1, 1936	705.197	
Entries for week ended August 8, 1936	40.845	
	746.042	
Loaded (Embarques) for week ended Aug. 8, 1936	28.497	
Local consumption week ended Aug. 8, 1936	3.500	
	714.750	
Stock at Rio, on Aug. 8, 1936	2.013.236	
Santos stock on Aug. 1, 1936		
Entries for week ended August 8, 1936	111.409	
	2.124.645	
Loaded (Embarques) during for week ended Aug. 8, 1936	104.513	
Stock at Santos on Aug. 8, 1936		2.024.691
Stock at Rio and Santos on Aug. 8, 1936		2.739.441
Stock at Rio and Santos on Aug. 1, 1936		2.718.433

NOTE - In the Rio stock, 705, bags bonus of 10% to shippers were included. In the Santos stock, 4,559 bags, have been included by D. N. C.

COFFEE SAILED

Week ending August, 8, 1936 - In bags of 60 kilos

PORTS	UNITED STATES	EUROPE & MEDITERRANEAN	COAST	RIVER PLATE	CAPE	OTHER PORTS	TOTAL FOR WEEK	CROP TO DATE
Rio	8561	4240	3125	3650	2045	—	22221	151073
Santos	103621	98710	235	2059	—	—	204625	768825
TOTAL	112182	102950	3360	5709	2045	—	226846	919898

DEN NORSKE SYD-AMERIKA LINJE

(The Norwegian South America Line)

Regular Service to Denmark, Finland, Norway, Baltic, River Plate & vice-versa with 8 fast going MODERN DIESEL MOTOR LINERS

NEXT SAILINGS

FOR RIVER PLATE

FOR FINLAND, DENMARK NORWAY & BALTIC

M/S "BRA-KAR" 28th. Aug

M/S "NORMA" 29th. Aug.

M/S "SALTA" 15th. Sept.

The vessels dispose of accommodation for a limited number of 1st. class passengers for Scandinavia and also for London & Dieppe with transshipment in Teneriffe.

For further particulars apply to

FREDRIK ENGELHART & CIA. - RUA S. PEDRO N. 9 - RIO DE JANEIRO
ALEX S. GRIEG & CIA. - PRAÇA DA REPUBLICA N. 51 - SANTOS



COFFEE

Bahia Stock on 7th. August, 1936	18,468
Entries during week ending 14th. Aug. 1936	9,351
<hr/>	
Available	27,819
Clearances during week:	
To U. S.	—
Europe	2,299
To Elsewhere	3,475
<hr/>	
Bahia Stock on 14th. August, 1936	22,045

COFFEE EXPORTED THROUGH THE PORT OF SANTOS — JULY

American.	Bags.
Munson S. S. Line	70,590
American Republics Line	40,576
Mooremack Line	44,763
Mississippi Shipping Line	91,540
Mc. Cormick S. S. Line	4,632
Belgian	
Compagnie Maritime Belge S/A.	21,486
Brazilian	
Cia. de Navegação Lloyd Brasileiro . .	67,477
Companhia de Navegação Costeira . .	271
British.	
Royal Mail Steam Packet Co.	20,985
Nelson Line	535
Lamport & Holt Line	23,200
Blue Star Line	793
Furness Prince Line	42,717
Danish.	
Det Forenede Dampskibsselskab	13,163
Dutch.	
Royal Holland Lloyd	9,570
Rotterdam Zuid Amerika Line	23,855
Finnish.	
Finland South America Line	2,693
French.	
Compagnie Chargeurs Reunis	33,911
Societe Generale de Transports Maritimes a Vapeur	9,987
German.	
Hamburg Suedamerikanische Dampschiffarts Gesellschaft	91,068
Italian.	
Flotte Reuniti "Italia-Cosulich"	26,786
Japanese.	
Osaka Shosen Kaisha Shipping Line . .	28,352
Norwegian.	
Den Nordske Syd-Amerika Linje	2,476
Westfal Larsen S. S. Line	12,539
Wilhelmsen S. S. Line	6,592
Spanish.	
Ybarra y Cia.	2,775
Swedish.	
Johnson Line	10,372
Linea Sud Americana Inc.	58,644
Gulf South America Line	17,185
<hr/>	
Total:	779,533

São Paulo Railway

EXCELLENT PASSENGER AND GOODS TRANSPORT SERVICES FROM SANTOS TO SÃO PAULO AND THE INTERIOR

SPECIAL FACILITIES FOR TOURISTS

Door to Door Collections and Deliveries of Luggage, Parcels and Merchandise in conjunction with

CIA. GERAL DE TRANSPORTES

Information: --

S. P. R. C. G. T.
 Estação da Luz R. Mons. Felippo, 3
 Caixa Postal "C" Caixa Postal "C"

SÃO PAULO

JULY

United States	463,634
Belgium	29,966
Canada	925
Denmark	13,413
Egypt	1,751
England	282
Finland	3,376
France	69,270
Germany	91,622
Holland	60,275
Italy	25,474
Japan	50
Norway	1,492
River Plate Ports	6,063
Spain	2,900
Sweden	7,390
Others	1,650
<hr/>	
Total:	779,533



SÃO PAULO RAILWAY COMPANY

ESTIMATED WEEKLY TRAFIC RECEIPTS

Year Week ended	Currency	Exchange	Sterling	Total to date
1936 July 28th.	2.296.694\$530	928200 or 2d. 39.64	24.909-18- 5	779.163-17- 1
1936 July 26th.	2.880.000\$000	868200 or 2d. 25.32	33.410-13- 6	922.989-12- 7
Increase	583.305\$470	Od. 11.61	8.500-15- 1	143.825-15- 6
Decrease				11 - -

M. A. SEYMER & CO.

STOCKHOLM, July, 18 th. 1936

SWEDISH COFFEE STATISTICS

Bags of 60 kilos.

STOCKS:

Jan. 1st.	189.076	196.070	161.992	126.767	105.704
Febr. 1st.	196.942	184.064	168.075	91.967	76.553
Mar. 1st.	192.761	183.278	165.428	83.259	89.914
Apr. 1st.	208.264	184.189	187.723	58.236	106.760
May 1st.	224.774	192.487	314.740	61.449	140.442
June 1st.	234.266	197.794	350.450	70.358	121.860
July 1st.	234.871	185.481	324.933	87.878	127.919

ARRIVALS:

Jan.	76.721	48.681	82.507	27.359	64.178
Febr.	54.313	54.749	60.420	46.628	46.659
March.	83.371	62.646	87.530	72.381	46.882
April.	82.288	71.337	198.007	72.042	79.125
May.	67.819	72.761	100.394	97.369	41.445
June.	54.920	59.520	33.518	64.866	52.071
	419.432	369.694	562.376	380.645	329.936

DELIVERIES:

Jan.	68.855	60.687	76.424	62.159	93.179
Febr.	58.494	55.535	63.067	66.336	32.874
March.	66.868	61.735	65.235	97.404	30.036
April.	66.778	63.039	70.990	68.829	45.443
May.	58.327	67.454	64.684	88.465	60.027
June.	54.315	71.833	59.035	47.341	46.012
	373.637	380.233	309.435	419.534	307.571



SHELL
WORLD WIDE
OIL FUEL
SERVICE

FOR MOTOR SHIPS
STEAMERS' BUNKERS
AND
INDUSTRIAL PURPOSES

ANGLO-MEXICAN PETROLEUM CO. LTD.
PRAÇA 15 DE NOVEMBRO, 10
RIO DE JANEIRO

BRANCHES AND AGENTS THROUGHOUT BRAZIL

RUBBER

The Movement of Rubber in the port, of Para during the week ending Aug. 14th. 1936 was as follows:
Stock on August, 7 th. 1936 4.845.801

Entries during week ending August 14th.
1936 56.576

Available 4.902.377

Clearances during week:

To Europe	—
To the U. S.	23.074
To other ports	23.460
	46.534

Stock on August, 14th. 1936 4.955.843

Spot Rubber was quoted at Pará on August 14th. 1936 as follows, per Kilo:

Island	5\$800
Sertão Fine	2\$700
Sernamby Inland	4\$400
Sernamby Sertão	2\$600
Caucho	2\$800

Wileman's Brazilian Review

THE MIRROR OF BRAZILIAN BUSINESS

Subscription abroad £ 3.0.0d.

BRAZIL, 100\$000

Payable in advance with order

Santos Coffee Movement During July, 1936

(Bags of 60 ks.)

Date	Transit	Entries	Despatched	Embarked	Overseas	Coastal	Total	Sales	Base Type 4	Stock	Exchange (Official)
1	20,722	12,513	2,120	72,383	41,946	—	41,946	30,000	168,500	2,111,574	578540
2	36,504	46,154	16,422	18,061	67,527	—	67,527	28,000	168,500	2,056,560	578540
3	14,919	40,321	8,180	10,066	28,567	80	28,647	23,000	178,000	2,074,067	578540
4	27,985	31,570	639	8,898	902	—	902	10,000	178,100	2,003,451	578540
6	21,404	17,628	20,095	2,249	13,772	—	13,772	12,000	178,300	2,021,249	578540
7	27,268	29,586	39,932	7,310	260	61	321	15,000	178,300	2,038,556	578540
8	20,871	18,511	28,025	47,234	18,674	—	18,674	20,000	178,300	2,049,468	578540
10	47,152	31,869	51,964	33,919	49,223	—	49,223	25,000	178,600	2,018,756	578540
11	31,888	15,455	—	—	—	—	—	—	—	2,034,211	Holiday
13	33,200	18,267	38,266	25,276	13,755	—	13,755	18,000	178,900	2,052,325	578540
14	43,500	32,273	65,996	48,016	8,723	—	8,723	30,000	178,900	2,063,870	578540
15	23,655	32,338	28,068	72,357	20,058	—	20,058	30,000	178,900	2,078,685	578540
17	46,339	45,819	19,209	19,040	126,981	—	126,981	24,000	178,900	1,984,042	578540
18	28,514	44,125	15,378	16,863	—	—	—	15,000	178,900	2,029,801	578540
20	36,714	31,392	41,039	25,189	9,997	—	9,997	22,000	178,900	2,063,989	578540
21	27,709	18,348	52,131	42,694	—	—	—	25,000	178,900	2,095,381	578540
22	27,630	31,752	16,947	46,446	53,272	—	53,272	24,000	178,800	2,060,487	578540
23	33,565	31,768	41,536	7,101	36,446	—	36,446	26,000	178,800	2,053,763	578540
24	25,542	31,770	33,435	23,030	47,876	130	48,006	23,000	178,800	2,039,525	578540
25	29,593	31,885	49,926	49,926	—	—	—	15,000	178,800	2,071,295	578540
27	27,401	31,832	76,832	33,076	37,314	—	37,314	25,000	178,800	2,065,892	578540
28	17,990	31,578	55,450	56,183	48,774	—	48,774	30,000	178,800	2,052,600	578540
29	25,037	32,350	13,511	40,291	84,728	—	84,728	23,000	178,800	2,001,800	578540
30	27,232	44,436	8,783	26,400	16,658	—	16,658	20,000	178,900	2,017,522	578540
31	35,383	32,077	3,333	9,979	53,809	—	53,809	30,000	188,300	2,006,930	578540
	742,825	766,247	664,627	742,587	779,262	271	779,533	542,000		TOTAL, MONTH	

Coffee reverted to stock during The Month . . . 14,472
Santos, 7th. August, 1936.

Rio de Janeiro Coffee Manifests

July 27th	
"AEGINA"	
Cape Town	
Sinner S/A	500
Castro Silva & Cia	500
Norton Megaw & Cia, Ltd	100
Mc. Kinlay S/A	25
Mossel Bay	
Sinner S/A	300
Norton Megaw & Cia, Ltd	100
Mc Kinlay S/A	75
Port Elizabeth	
Mc. Kinlay S/A	485
Leon Israel S/A	175
Norton Megaw & Cia, Ltd	100
Sinner S/A	100
Castro Silva & Cia	50
Lourenço Marques	
Ornstein & Cia	30
Luderitz Bay	
Theodor Wille & Cia, Ltd	25
Walfish Bay	
Mc. Kinlay S/A	50
Theodor Wille & Cia, Ltd	30
Total	2.645
July 28th	
"PEDRO II"	
Buenos Aires	
Castro Silva & Cia	1.200
Rebello, Alves & Cia	1.200
A. Jabour & Cia	1.000
Theodor Wille & Cia, Ltd	250
Total	3.650
July, 29th	
"LAGES"	
New Orleans	
Castro Silva & Cia	2.000
July, 29th	
"ALBADI"	
Rotterdam	
Cia Nac. Commercio de Cafe	250
Leon Israel Co S/A	190
Theodor Wille & Cia, Ltd	50
Total	490
July, 20th	
"REMO"	
Genoa	
Luigi Bozzo Erminio	500
Pinto, Lopes & Cia	450
Cia Nac. Commercio de Cafe	250

Mc. Kinlay S/A	150
Theodor Wille & Cia, Ltd	100
Ornstein & Cia	80

Port Said	
Castro, Silva & Cia	125
Pireus	
Sinner S/A	1.000
Bourgas	
Sinner S/A	63
Famagusta	
Sinner S/A	32
Total	2.750
July, 30th	
"RAUL SOARES"	
Havre	
Ornstein & Cia	500
A. Jabour & Cia	500
Total	1.000

July, 30th	
"BRONTE"	
New York	
Theodor Wille & Cia, Ltd	500
July, 30th	
"WEST CALUMB"	
Philadelphia	
Theodor Wille & Cia, Ltd	5.061
July, 30th	
"PAN AMERICA"	
New York	
Castro, Silva & Cia	500
A. Jabour & Cia	250
Leon Israel Co S/A	250
Total	1.000
Total Overseas	19.096

WILEMAN'S
Brazilian Review
CIRCULATES
in 33 different countries
THE STANDARD PUBLICATION
FOR BRAZILIAN STATISTICS
quoted by Government Departments
the world over

Santos Coffee Manifests

July, 27th	
"ARGENTINA"	
Copenhagen	
Hard, Rand & Cia	2.438
Cia Leme Ferreira	2.250
H. La Domus & Cia	875
Theodor Wille & Cia, Ltd	500
Luiz Ferreira & Cia	375
Lima, Nogueira & Cia	315
Hermann Gath & Cia	200
Camargo Pacheco & Cia	125
Exp. Café Brasil, Ltd	125
Thisted	
Theodor Wille & Cia Ltd	125
Kolding	
Theodor Wille & Cia, Ltd	13
Total	7.341
July, 27th	
"HIGHLAND PATRIOT"	
London	
Martins, Gregory & Cia, Ltd	17
July, 27th	
"ALMEDA STAR"	
Buenos Aires.	
Vidigal, Prado & Cia	300
Eugenio Teuber	199
Total	499
July, 27th	
"RAUL SOARES"	
Amsterdam	
Norbert Gyerhahn	26.850
Havre	
Soc. Mogyana Export, Ltd	500
B. Gonçalves & Cia, Ltd	250
Luiz Ferreira & Cia	100
Antwerp	
Hard, Rand & Cia	125
Ribeiro do Valle & Cia	125
Lima, Nogueira & Cia	125
H. La Domus & Cia	120
Martins, Gregory & Cia, Ltd	91
Hamburg	
Exp. Café Brasil, Ltd	554
Total	28.840
July, 27th	
"ALDABI"	
Rotterdam	
Theodor Wille & Cia, Ltd	3.528
E. Johnston & Cia, Ltd	750

Hard, Rand & Cia	500
Cia Prado Chaves	251
Martins, Gregory & Cia, Ltd	163
A. Sion & Cia	125

Oslo

Cia Leme Ferreira	125
Total	5.442

July, 28th

"BORGA"

Copenhagen

Lima, Nogueira & Cia	250
--------------------------------	-----

Oslo

Theodor Wille & Cia, Ltd	50
Total	300

July, 28th

"REMO"

Genoa

Barros, Pentecado & Cia	2.400
Exp. Rubiac Ltd	2.327
Cia Prado Chaves	1.250
Almeida Prado & Cia	903
Nioac & Cia, Ltd	597
Cia Leme Ferreira	115
Vidigal, Prado & Cia	52

Naples

Hard, Rand & Cia	5.000
Exp. Rubiac, Ltd	1.010
B. Gonçalves & Cia, Ltd	250
Cia Leme Ferreira	91

Venice

Rebello, Alves & Cia	347
--------------------------------	-----

Palermo

Almeida Prado & Cia	58
Total	14.400

July, 28th

"ARGENTINNA"

Buenos Aires

Lima, Nogueira & Cia	610
--------------------------------	-----

Luiz Ferreira & Cia	500
Nioac & Cia, Ltd	250

Julq, 29th

Rosario

Lima, Nogueira & Cia	200
Total	1.560

July, 28th

"WEST CALUMB"

Bontou

Ray Deininger & Cia, Ltd	3.750
American Coffee Corp.	3.500
Hard, Rand & Cia	3.375
E. Johnston & Cia, Ltd	2.583
Almeida Prado & Cia, Ltd	2.250
Naumann, Gepp. & Cia, Ltd	1.500
Theodor Wille & Cia, Ltd	1.175
Cia Paulista de Exportação	750
Arbuckle & Cia	750
Leon Israel Co S/A	500
H. La Domus & Cia	250
Sampaio Bueno & Cia	250
Exp. Rubiac, Ltd	250
Zander & Cia, Ltd	125
Junqueira, Meirelles & Cia	125
Martins, Gregory & Cia, Ltd	125

Philadelphia

Hard, Rand & Cia	500
Theodor Wille & Cia, Ltd	500
Almeida Prado & Cia	250
H. La Domus & Cia	250
Sampaio Bueno & Cia	125
Total	22.883

July, 28th

"ARABY"

Havre

Hard, Rand & Cia	17.500
Martins, Gregory & Cia, Ltd	1.225
Oswaldo Ferreira & Cia	875
Fed. Paulista Coop. de Café	500
B. Gonçalves & Cia, Ltd	500
Camargo, Pacheco & Cia, Ltd	250

Rouen

Martins, Gregory & Cia, Ltd	125
Total	20.975

"LONDONIER"

Antwerp

Theodor Wille & Cia, Ltd	4.227
Cia Leme Ferreira	2.625
Hard, Rand & Cia	1.875
Lima, Nogueira & Cia	1.063
Naumann, Gepp & Cia, Ltd	825
Almeida Prado & Cia	625
Soc. Mogyana Export, Ltd	375
Martins, Gregory & Cia, Ltd	365
Luiz Ferreira & Cia	350
Nioac & Cia, Ltd	325
Exp. Café Brasil, Ltd	250
Cia Prado Chaves	175
Fed. Paulista Coop, Café	125
Exp. Rubiac, Ltd	125
Total	13.130

July, 29th

"PAN AMERICA"

New York

American Coffee Corp.	10.500
Naumann, Gepp & Cia, Ltd	2.927
Arbuckle & Cia	2.387
Theodor Wille & Cia, Ltd	2.060
Hard, Rand & Cia	2.050
Cia Prado Chaves	1.750
Cia Leme Ferreira	1.510
H. La Domus & Cia	1.250
Ray Deininger & Cia, Ltd	1.000
S. A. Levy	1.000
Sampaio Bueno & Cia	973
Zander & Cia, Ltd	750
Leon Israel Co S/A	625
Oswaldo Ferreira & Cia	500
Nioac & Cia, Ltd	500
Exp. Rubiac, Ltd	500
Mc. Laughlin & Cia	408
Gieseler & Cia	319
Soc. Nacional Export, Ltd	250
Ribeiro do Valle & Cia	250
Luiz Ferreira & Cia	160
Total	31.669

July, 30th

"FORMOSE"

Havre

Hard, Rand & Cia	750
Nioac & Cia, Ltd	625
Soc. Mogyana Export, Ltd	500



FINLAND SOUTH AMERICA LINE

SUOMEN ETELA-AMERIKAN LINJA

FORTNIGHTLY SAILINGS FROM SANTOS, RIO DE JANEIRO AND VICTORIA DIRECT TO POLAND (GDYNIA), DANZIG & FINLAND.

Next sailings:	From Santos	From RIO	From VICTORIA
"EQUATOR"	August 25	August 27	August 29
"AURA"	Sept. 10	Sept. 12	Sept. 14

RIO DE JANEIRO — WILSON, SONS & CO. LTD. — AV. RIO BRANCO, 37 — TEL. 23-1532

AGENTS: SANTOS — FINLAND SOUTH AMERICA LINE — R. 15 NOVEMBRO 183 — TEL. 5-379

V I C T O R I A — CARL BOLL

CAIXA POSTAL 23.

Theodor Wille & Cia, Ltd	500	Cia Prado Chaves	150	Theodor Wille & Cia, Ltd	50
Antwerp		Theodor Wille & Cia, Ltd	125	Total	185
Martins, Gregory & Cia, Ltd	750	Tacoma		July 31st	
Total	3.125	Theodor Wille & Cia, Ltd	200	"RODRIGUES ALVES"	
July, 30th		Total	4.632	Porto Aleger	
"AMSTELLAND"		July 31st		Paiva, Nunes & Cia	50
Amsterdam		"BRANDANGER"		Total Coastwise	235
Theodor Wille & Cia, Ltd	2.250	San Pedro		Coffee Manifests	
Lima, Nogueira & Cia	375	Almeida Prado & Cia	1.000	Victoria	
Sampaio Bueno & Cia	250	American Coffee Corp.	500	Aug. 2nd.	
Cia Leme Ferreira	250	Hard, Rand & Cia	310	"LAGES"	
Leon Israel Co S/A	250	Theodor Wille & Cia, Ltd	250	New Orleans	
Vidigal, Prado & Cia	125	Naumann, Gepp & Cia, Ltd	250	Nolasco & Cia	7.375
Naumann, Gepp & Cia, Ltd	28	H. La Domus & Cia	50	Soc. Exp. de Café	1.250
Total	3.528	S. Francisco da California		Vivacqua Irmãos S/A	1.750
July, 30th.		Almeida Prado & Cia	1.500	Cia Nac. Commercio de Café	625
"DELNORTE"		Rebello, Alves & Cia	250	Cia. Cafeeira de M. Geraes	1.500
New Orleans		Theodor Wille & Cia, Ltd	217	Theodor Wille & Cia, Ltd	375
Hard, Rand & Cia	8.308	Naumann, Gepp & Cia, Ltd	125	Houston	
Theodor Wille Cia, & Ltd	7.450	Har, Rand & Cia	90	Nolasco & Co.	3.584
Lima, Nogueira & Cia	3.125	Seattle		Sociedade Exp. de Café	2.000
Ray Deininger & Cia, Ltd	3.000	Almeida Prado & Cia	700	Vivacqua Irmãos S/A	750
E. Johnston & Cia, Ltd	2.876	Naumann, Gepp & Cia, Ltd	125	Armando Pinto & Co.	1.750
Nioac & Cia, Ltd	2.250	American Coffee Corp.	50	Cia Nac. Commercio de Café	1.500
H. La Domus & Cia	1.750	Portland		Oliveira Santos & Co.	500
Almeida Prado & Cia	1.684	Hard, Rand & Cia	500	A. Prado & Co	250
Leon Israel Co S/A	1.637	Naumann, Gepp & Cia, Ltd	125	Total	23.209
Naumann, Gepp & Cia, Ltd	1.300	H. La Domus & Cia	125	Aug. 3rd.	
Cia Leme Ferreira	840	Vancouver		"DELNORTE"	
Zander & Cia, Ltd	750	Hard, Rand & Cia	425	New Orleans	
Ramos, Silva & Cia	500	Total	6.592	Oliveira Santos & Co.	1.000
Ribeiro do Valle & Cia	500	July 31st		Jayne de Almeida	750
Junqueira, Meirelles & Cia	375	"CRUX"		Hard, Rand & Co.	755
Arbuckle & Cia	250	Oslo		A. Prado & Co.	250
Luiz Ferreira & Cia	250	Cia Leme Ferreira	401	Arbuckle & Co.	1.000
J. G. Martins & Cia, Ltd	225	Theodor Wille & Cia, Ltd	288	Houston	
J. G. Soares & Cia	150	Naumann, Gepp & Cia, Ltd	105	Hard, Rand & Co.	1.625
Cia Prado Chaves	125	Martins Gregory & Cia, Ltd	100	Nolasco & Co.	2.000
Oswaldo Ferreira & Cia	125	Soc. Mogyana Exprt, Ltd	63	Leon Israel Co. S/A	250
Gieseler & Cia	125	Borgen		Theodor Wille & Co	375
Exp. Rubiac, Ltd	125	Cia Leme Ferreira	200	Total	8.005
Houston		E. Johnston & Cia, Ltd	135	Aug. 5th.	
Barros, Pentendo & Cia	125	Naumann, Gepp & Cia, Ltd	75	"KRONP. MARGARETA"	
Total	37.845	Theodor Wille & Cia, Ltd	75	Kalmar	
July 31st		Helsinki		Oliveira Santos & Co	125
"WEST CACTUS"		Naumann, Gepp & Cia, Ltd	145	Stockholm	
S. Francisco da California		Trondhjem		Oliveira Santos & Co	250
Theodor Wille & Cia, Ltd	917	Theodor W & Cia, Ltd	25	Theodor Wille & Co.	250
Hard, Rand & Cia	550	Total	1.612	Ornskoldsvik	
H. La Domus & Cia	490	Total Overseas	204.390	Vivacqua Irmãos S/A	125
Naumann, Gepp & Cia, Ltd	250	COASTWISE		Gefle	
Rebello, Alves & Cia	75	July 31st		Oliveira Santos & Co.	250
Seattle		"ITAQUICE"		Armando Pinto & Co.	250
Exp. Café Brasil, Ltd	500	Porto Alegre		Nolasco & Co.	125
Cia Prado Chaves	250	Centola & Cia. Ltd	135	Total	1.375
Almeida Prado & Cia	250				
Portland					
Cia Prado Chaves	250				
Almeida Prado & Cia	250				
H. La Domus & Cia	125				
San Pedro					
Hard, Rand & Cia	250				

"PULASKI"

Gdynia

Theodor Wille & Co.	2.000
Ornstein & Co.	2.050
Nolasco & Co.	500
Hard, Rand & Co.	275
Cia. Cafeeira de M. Geraes	375

Danzig

Theodor Wille & Co.	261
Nolasco & Co.	950
Hard, Rand & Co.	602
Cia. Cafeeira de M. Geraes	375

Neufahrwasser

Hard, Rand & Co.	90
Total	7.478

Aug. 6th.

"ENRICO COSTA"

Trieste

Ornstein & Cia.	63
Theodor Wille & Co.	125
Oliveira Santos & Co.	125

Sussack

Vivacqua, Irmãos S/A	1.000
Ornstein & Co.	188

Dubrovnik

Theodor Wille & Co.	125
Total	1.626

Aug. 6th

"EAST INDIAN"

Jacksonville

Nolasco & Co.	1.500
Theodor Wille & Co.	500

Norfolk

Theodor Wille & Co.	875
Vivacqua, Irmãos S/A	1.000
Ornstein & Co.	500
Oliveira Santos & Co.	500
A. Prado & Cia.	500
Cia. Cafeeira de M. Geraes	250

Baltimore

Theodor Wille & Co.	2.125
Arbuckle & Co.	500
Hard, Rand & Co.	500
Vivacqua, Irmãos S/A	250

Total 9.000

Aug. 8th.

"MENDOZA"

Bougie

Nolasco & Co.	250
-----------------------	-----

Philipeville

Nolasco & Co.	250
Oliveira Santos & Co.	375

Oran

Nolasco & Co.	5.500
-----------------------	-------

Theodor Wille & Co.	62
Vivacqua, Irmãos S/A	940
Ornstein & Co.	1.064
Oliveira Santos & Co.	562
Cia. Cafeeira de M. Geraes	125
Jayne de Almeida	125

Algier

Nolasco & Co.	2.125
Theodor Wille & Co.	1.375
Vivacqua, Irmãos S/A	375
Ornstein & Co.	250
Cia. Cafeeira de M. Geraes	250
Cia. Nac. de Cam. de Cafe	63

Marseille

Nolasco & Co.	125
Theodor Wille & Co.	250

Total 14.066

Aug. 11th.

"WESTERWALD"

Hamburg

Ornstein & Co.	938
Theodor Wille & Co.	250
Nolasco & Co.	575

Total 1.763

Aug. 12th.

"ALCYONE"

Rotterdam

Hard, Rand & Co.	375
Theodor Wille & Co.	250

Total 625

MEAT

MEAT CLEARANCES DURING WEEK ENDING AUGUST 7th. 1936

(Per Destination)

Aug. 1st.

"AFRIC STAR"

London

Frig. Anglo Chilled beef	127,762
Frig. Anglo Smoky pork	7,673
Frig. Anglo Frozen offal	9,600

Aug. 1st

"DUQUESA"

London

Armour Co Chilled beef	155,106
Frig. Wilson Chilled beef	183,100
Frig. Wilson Frozen offal	58,618

Aug. 3rd.

"NARIVA"

Liverpool

Armour Co. Chilled beef	203,269
Frig. Anglo Chilled beef	60,923
Frig. Wilson Frozen offal	34,092

Aug. 5th.

"MENDOZA"

Genoa

Fri. Wilson Frozen beef	25,555
-----------------------------------	--------

Frig. Anglo Frozen beef	30,334
-----------------------------------	--------

Oran

Armour Co. Frozen beef	1,257
Frig. Anglo Frozen beef	536

Alger

Armour Co. Frozen beef	1,830
----------------------------------	-------

Gibraltar

Frig. Anglo Frozen offal	9,396
Frig. Wilson Frozen offal	2,518

Total 911,560

FRUIT

CLEARANCES DURING WEEK ENDING AUGUST, 7th. 1936 CONFIRMATION OF SANTOS FRUIT...

FRON SANTOS

BANANAS IN BUNCHES

Aug. 1st.

"AFRIC STAR"

London	9.579
------------------	-------

"DUQUESA"

London	6.902
------------------	-------

Aug. 1st

ORANGES IN CASES

London	994
------------------	-----

FROM S. SEBASTIAO

BANANAS IN BUNCHES

Aug. 1st.

"AFRIC STAR"

London	27.097
------------------	--------

ORANGES IN CASES

Aug. 1st.

"AFRIC STAR"

London	1.297
------------------	-------

SHIPPING

MOVEMENTS OF VESSELS: FURNESS PRINCE LINE (ROULDER BROTHERS & CO. (BRAZIL) LTD AGENTS)

M/S. "NORTHERN PRINCE" leaves Rio 20th August for Trinidad and New York.

M/S. "SOUTHERN PRINCE" due Rio de Janeiro from New York 21st August, sails for Santos, Montevideo and Buenos Aires.

M/S. "SOUTHERN PRINCE" leaves Rio 3rd September for Trinidad and New York.

M/S. "WESTERN PRINCE" due Rio de Janeiro from New York 4th September, sails for Santos, Montevideo and Buenos Aires.

M/S. "WESTERN PRINCE" leaves Rio 17th September for Trinidad and New York

M/S. "EASTERN PRINCE" due Rio de Janeiro from New York 18th September, sails for Santos, Montevideo and Buenos Aires.

COTTON SUGAR AND RUBBER QUOTATIONS

COTTON SERVICE

Rio de Janeiro, 14th. August, 1936.

Liverpool 12.30 P. M.

	8	10	11	12	13	14
Pernambuco Macelo fair spot	6.36	6.11	6.19	6.27	6.38	6.32
São Paulo fair "	6.51	6.26	6.34	6.42	6.53	6.47
American Middling "	7.01	6.76	6.84	6.92	6.98	6.92
American futures October	6.42	6.19	6.27	6.35	6.46	6.40
January	6.32	6.12	6.20	6.27	6.37	6.33
March	6.32	6.13	6.21	6.27	6.37	6.33
May	6.30	6.12	6.21	6.26	6.36	6.32
New York American Middling Uplands October	12.63	12.32	12.42	12.60	12.59	12.41
January	11.98	11.67	11.77	11.95	11.94	11.76
March	12.02	11.72	11.82	12.03	12.04	11.84
May	12.03	11.81	11.86	12.08	12.07	11.86
	12.07	11.80	11.89	12.09	12.08	11.88

SUGAR SERVICE

New York futures September	Holiday	2.72	2.73	2.75	2.77	2.76
December		2.63	2.63	2.65	2.67	2.67
January		2.49	2.48	2.49	2.51	2.50
March		2.44	2.44	2.45	2.48	2.46
London futures August	4/5	4/5 1/4	4/4 1/2	4/4 1/2	4/4 1/2	4/4
September	4/5	4/5	4/4 1/2	4/4 1/2	4/4 1/2	4/4
October	4/5	4/5	4/4 1/2	4/4 1/2	4/4 1/2	4/4
December	4/5 1/2	4/5 1/4	4/5 1/4	4/5 1/4	4/4 1/4	4/4 1/2

RUBBER SERVICE

Upriver fine	20	20	20	20	20	20
Smoked Sheets	163/8	163/8	163/8	16 1/4	16 1/4	163/8
Market	Quiet	Quiet	Quiet	B Steady	Quiet	Steady

GRAPHICA NOVO MUNDO

ENGLISH PRINTING

A SPECIALITY

H. BRABNER

RUA CARLOS DE CARVALHO, 45

TELEPHONE: 22-9781

CAIXA POSTAL 809.

RIO DE JANEIRO

COTTON EXPORTS

Date	Port of Shipment	Ship	Port of Destination	Bales	Kilos
July 4	Santos	Balfe	Liverpool	13,303	2,332,235
" 11	"	Biela	"	2,176	392,187
" 13	Areia Branca	Sprece	Hamburg	401	71,874
" 13	"	"	Havre	281	51,469
" 24	Pernambuco	Kasongo	Hamburg	1,611	303,284
" 27	Santos	Arabia Maru'	Shanghai	535	126,128
" "	"	"	Osaka	1,453	246,858
" "	"	"	Kobe	4,212	746,400
" "	"	Raul Soares	Havre	128	22,477
" 28	"	Aldabi	Rotterdam	935	161,352
" "	"	Araby	Havre	123	22,446
" 29	"	"	Rotterdam	252	45,037
" 30	"	Londonier	Antwerp	1,222	217,458
" "	"	Formose	Havre	408	67,841
" "	"	Amstelland	Hamburg	2,746	485,988
Aug. 1	"	"	Amsterdam	461	76,910
" "	"	Enrico Costa	Trieste	1,022	174,178
" "	"	"	Genoa	592	102,560
" 2	"	"	Fiume	244	44,220
" 4	"	Pulaski	Gdynia	193	33,782
		Delambre	Liverpool	5,855	1,052,973

FREIGHT MARKET

RIVER PLATE CHARTERS FOR
the period August, 15th, 1936

Name of Steamer	Where to load	Freight	Destination
ss "ZYPENBERG" (Du). 7850, 10%, Nov. 20 Dec. 10			
A steamer 7000 tons, 10%, Sept. 17 c.	S/L	19/-	p. p. U. K.
ss "WESTESE" (Ge). 7500 tons, 10%, Sept. 10-21	S/L	19/6	Hull
ss "MARIA" (Gr). 6000 tons, 10%, Oct. 5-20	Bahia Blanca Buenos Aires or La Plata	18/-	Antwerp
ss "RUNSWICK" (Br). 5800 tons, 10%, Sept. 18-30		18/-	p. p. U. K.
A Vinke Steamer (Du). 5000 tons, 10%, Oct. 15-Nov. 15	S/L	19/6	p. p. U. K.
A Steamer 6800 tons, 10%, Oct. 5-25	S/L	19/3	p. p. U. K.
ss "COLYTO" (Du). 6500 tons, 10%, Sept. 15-30	S/L	19/3	p. p. U. K.
A steamer 5500 tons, 10%, Oct. 20-Nov. 20	S/L	21	p. p. U. K.
ss "NURTEREETON" (Br). 8700 tons, 10, Sept. 1-20	S/L	19 1/2 d.	Canada
ss "AMSTERDAM" (Du). 12,000 tons, 10%, Sept. 15-30	S/L	19 1/2 d.	p. p. U. K.
ss "KORANTON" (Br). 9000 tons, 10% Sept 10-25	Necochea and Buenos Aires		Antwerp and Rotterdam
ss "ANNA" (Gr). 7000 tons, 10%, Nov. 1-15	S/L	19 1/2 d.	p. p. U. K.
ss "ANNA BULGARI" (Gr). 7500 tons, 10%, Nov. 2-30	S/L	19/-	U. K. Antwerp/ Rotterdam
ss "ZVIR" (YS). 7,500 tons, 10%, Oct. 8 Nov. 2	S/L	19/-	p. p. U. K.
ss "ARIS" (Gr). 6700 tons, 10%, Sept. 23 Oct. 20	S/L	19/-	p. p. U. K.
ss "MARGALAU" (Br). 6800 tons, 10%, Oct. 10-31	S/L	19/-	Antwerp
ss "IOANNIS VATIS" (Gr). 7300 tons, 10%, Sept. 25-Oct. 10	S/L	19/3	p. p. U. K.
ss "RICHMOND HILL" (Br). 8900 tons, 10%, Sept. 21-29	S/L	19/6	p. p. U. K.
A steamer 6800 tons, 10%, Oct. 25-Nov. 25	S/L		
A steamer 7500 tons, 10%, January 1-31	S/L	18/10 1/2 d.	p. p. U. K.
ss "MINNIE DE LARRINAGA" (Br). 7500 tons, 10%, Sept. 5-15	S/L	19/-	p. p. U. K.
ss "DALEMORE" (Br). 7500 tons, 10%, Sept. 15-30	S/L	21	Japan or
ss "RAD" (YS). 6400 tons, 10%, Sept. 15-25	S/L	21/6	p. p. U. K.
ss "PIKEPOOL" (Br). 5200 tons, 10%, Oct. 5-15	S/L	20/-	p. p. U. K.
A Hain Steamer 7000 tons, 10%. Sept. 21-30	S/L	19/6	
ss "RIO AZUL" (Br). 6300 tons, 10%, Sept. 18-30	S/L	19/3	p. p. U. K.
ss "HELENN D." (Gr). 7000 tons, 10%, Nov. 1-20	S/L	19/3	p. p. U. K.
ss "HARPERLEY" (Br). 6200 tons, 10%, Nov. 15-30	S/L	19/-	p. p. U. K.
	S/L		Buenos Aires
			p. p. U. K.

ss "HOMESIDE" (Br). 6800 tons, 10%, Oct. 19 - Nov. 14	S/L	19/-	p. p. U. K.
mv "NORMANDIET" (Da). 5200 tons, 10%, Sept. 5-16	S/L	22/6	Philadelphia
ss "GEORGE M. EMBIRICOS" (Gr). 9200 tons, Oct. 15 - Nov. 10	S/L	18/10½d.	p. p. U. K.
ss "PETERTON" (Br). 7000 tons, 10%, Nov. 16 - Dec. 10	S/L	19/-	p. p. U. K.
ss "TRONGATE" (Br). 6200 tons, 10%, Oct. 19 - Nov. 19	S/L	19/-	p. p. U. K.
ss "PAPALEMOS" (Gr). 5500 tons, 10%, Sept. 20-30	S/L	19/3	p. p. U. K.
ss "NICOLAS ANGELOS" (Gr). 6000 tons, 10%, Nov. 15 Dec. 10	S/L	19/-	p. p. U. K.
mv "LENFIELD" (Br). 5600 tons, 10%, Oct. 5-20	S/L	16/3	p. p. U. K.
ss "LORNASTON" (Br). 7300 tons, 10%, Oct. 10-25	S/L	19/-	p. p. U. K.
ss "GRETASTON" (Br). 7300 tons, 10%, Oct. 10-31	S/L	19/-	p. p. U. K.
ss "AEGEUS" (Gr). 6000 tons, 10%, Oct. 20 Nov. 10	S/L	19/-	p. p. U. K.
ss "FARMSUN" (Du). 8500 tons, 10%, Dec. 15 January 10	S/L	18/10½d.	p. p. U. K.
ss "AALSUM" (Du). 8500 tons, 10%, Dec. 15 January 15	S/L	18/10½d.	p. p. U. K.
ss "FISHPOOL" (Br). 6800 tons, 10%, Sept. 21-Oct.5	S/L	19/9	p. p. U. K.
ss "HARPALYCE" (Br). 6800 tons, 10%, Oct. 10-25	S/L	19/-	Hull
ss "LANGLEEGORSE" (Br). 7000 tons, 10%, Oct. 15 - Nov. 10	S/L	19/-	p. p. U. K.
ss "JERSEY CITY" (Br). 8000 tons, 10%, Sept. 15-30	S/L	19/3	Los Angeles/Vancouver
ss "RIVERTON" (Br). 7500 tons, 10%, Dec./January,	S/L	19/-	p. p. U. K.
ss "LOCH HANZA" (Br). 7800 tons, 10%, Sept. 15-30	Rosario	\$5.25 U. S.	New York (Berth terms)
ss "IONNIS P. GOULANDRIS" (Gr). 5000 tons, 10%, Oct. 15 - Nov. 15	S/L	19/3	p. p. U. K.
ss "PELEUS" (Gr). 7500 tons, 10%, Oct. 15-31	S/L	19/-	p. p. U. K.
ss "JULIA" (Gr). 6300 tons, 10%, Nov. 1-20	S/L	19/-	p. p. U. K.
ss "ZEUS" (Gr). 6900 tons, 10%, Nov. 1-30	S/L	19/-	p. p. U. K.
ss "ZITELLA" (Br). 6800 tons, 10%, Oct. 20 Nov. 10	S/L	19/-	p. p. U. K.
ss "ONASSI SOCRATIS" (Gr). 7000 tons, 10%, Sept. 15-30	S/L	19/-	p. p. U. K.
ss "MERSINGTON COURT" (Br). 6500 tons, 10%, Oct. 20 - Nov. 10	S/L	19/-	p. p. U. K.
ss "THISTLEGRATH" (Br). 7200 tons, 10%, Sept. 15-30	S/L	19/3	p. p. U. K.
ss "FARSUN or BRITSUM" (Du). 8500 tons, 10%, Nov. 15 Dec. 15	S/L	18/10½d.	p. p. U. K.
ss "KING DAVID" (Br). 5200 tons, 10%, Sept. 10-20	S/L	22/6 23/-	U. S. Atlantic (1port) or Montreal

THE LEOPOLDINA RAILWAY COMPANY

ESTIMATED WEEKLY TRAFIC RECEIPTS

Year	Week end-d	Receipts for week			Total from 1st January
		Currency	Exchange	Sterling	
1936	8 h August	1715:000\$	2.80 d.	£ 20.008	£ 562.512
1935	10th "	2051:000\$	2.61 d.	£ 22.305	£ 525.560
Incr.	X X	—	.19 d.	—	£ 36.952
Decr.	X X	336:000\$	—	£ 2.297	—

J. LAURITZEN-COPENHAGEN

REGULAR SERVICE BRAZIL/UNITED KINGDOM AND THE CONTINENT WITH FAST AND MODERN REFRIGERATED FRUIT STEAMERS AND MOTOR VESSELS
For particulars apply to

A A P R O & C o .

Rua Visconde de Inhaúma 60 — Sob.
Caixa Postal 459 — Phone 23-4952

RIO DE JANEIRO

Telegr.: Lauritzen