

Wileman's BRAZILIAN REVIEW

A Weekly Journal of Trade, Finance Economics and Shipping.

RIO DE JANEIRO
Rua Theophilo Ottoni, 41

ESTABLISHED 1898

(CAIXA POSTAL)
(P. O. Box) 809

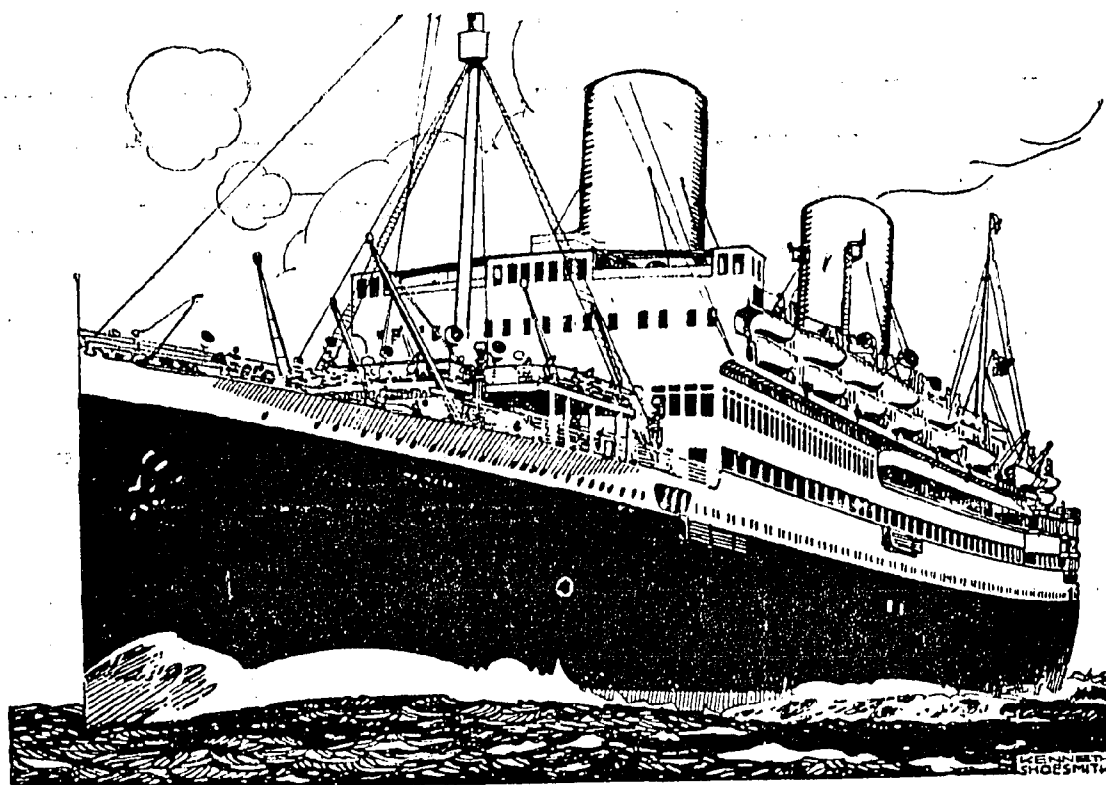
VOL. 28

RIO DE JANEIRO, 8th. June, 1936

N.º 23

2\$000

ROYAL MAIL



REGULAR SAILINGS
BY EXPRESS TURBINE STEAMERS

ALCANTARA ASTURIAS

LARGEST AND FASTEST BRITISH LINERS
TO EUROPE AND RIVER PLATE

FOR PASSAGES AND FURTHER INFORMATION APPLY TO

ROYAL MAIL AGENCIES (BRAZIL) LTD.

Agents: **ROYAL MAIL LINES, LIMITED.**

RIO DE JANEIRO: AVENIDA RIO BRANCO, 51 55 — TEL. 23-2161
ALSO AT SANTOS, SÃO PAULO, BAHIA, PERNAMBUCO, RIO GRANDE, ETC.

The City of Santos Improvements Company, Limited

CAIXA 4 — SANTOS — ESTADO DE SÃO PAULO

GAS DEPARTMENT. Special coke and tar produced by the continuous carbonization process. Also soft pitch for waterproofing purposes, crude benzol and oils for the manufacture of disinfectants.

WATER DEPARTMENT. — Distribution on the constant supply system. Special cheap rates for industrial supplies. Ships supplied with water of guaranteed purity, at the rate of 150 tons per hour if required.

ELECTRICITY DEPARTMENT. — Installations of any magnitude for Light and Power. Cheap power for long hour consumers. Motor repairs.

TRAMWAYS DEPARTMENT. — Seventy kilometres of rapid electric service. Season tickets with nonstop service. Special terms for large parties: parcel delivery; service to all points. Electric transport of goods and building material at cheap rates. Goods from interior should be despatched "Companhia City, Desvio Saboe".

MOTOR OMNIBUS SERVICES: Town Avenues and Beach.

Telegraphic Address "CIDADE" — Santos

Drink
what you
like—

... and your choice will be

DEWAR'S
"White Label"



WILEMAN'S BRAZILIAN REVIEW

Circulates in 33 different countries

THE STANDARD PUBLICATION FOR BRAZILIAN
STATISTICS

quoted by Government Departments
the world over.

THE "SOUTH AMERICAN JOURNAL"

and Brazil & River Plate Mail

(Established 1863)

This weekly paper has for long been the recognised organ for Latin-American affairs. It covers all aspects, makes a special feature of trade and finance, is free of any Government or other control and deals with Brazil in a fearless but friendly manner, bringing a long experience to bear upon any subject.

Circulates throughout the countries of Latin-America, Great Britain, the United States, Europe, Japan, etc.

The prepaid terms of subscription are
40/- per annum in Great Britain
45/- per annum elsewhere.

Communications respecting advertisements or subscriptions should be addressed to: —

MANAGER, PUBLISHING DEPARTMENT,

"SOUTH AMERICAN JOURNAL"

4 BROAD STREET PLACE, LONDON, E. C. 2

CAMBIO

ESCRITORIO LEVY LIMITADA

TITULOS

Private & Public Titles transacted on all Brazilian markets. Sale of Coffee to the D. N. C., São Paulo & Santos dealers. Editors of the "Revista Financieira Levy", Boletim Comercial, Suplemento Levy (Dailies). Money transactions. Foreign & National on all markets of the world. Agents & Representatives in Rio de Janeiro, Bahia, Porto Alegre, Recife, Pará and all foreign Cities.

STOCK BROKERS

RUA 15 DE NOVEMBRO, 59
SANTOS

CUSTOM HOUSE BROKERAGE OFFICE

RUA ALVARES PENTEADO, 20
SÃO PAULO

Telegrams: "YVEL"

Wileman's Brazilian Review

A WEEKLY JOURNAL OF TRADE, FINANCE, ECONOMICS AND SHIPPING

VOL. 28

RIO DE JANEIRO, 8th. June, 1936

N. 23

Notes

The weekly session of the Federal Council of Overseas Trade was held on Monday last under the presidency of Dr. Getúlio Vargas, President of the Republic; Dr. José Carlos de Macedo Soares, Minister of Foreign Affairs, also attended. Counsellors present were Srs. Souza Mello, João Maria de Lacerda, Arthur de Carvalho, Alberto Boavista, Raul Leite, Euvaldo Lodi, Arthur Torres Filho, Victor Viana, Lennhoff Britto, Léo d'Afonseca, Valentim Bouças, Franklin de Almeida, and Consul Aluizio de Magalhães.

The Minute; of the 94th. Meeting, held on May 18th., having been duly approved, the weekly subject matter was read, which included the following: Card from the Brazilian Legation at Stockholm, submitting copy of a report made to the Secretariat of Foreign Affairs regarding the possibilities of placing Brazilian sugar on Swedish markets; Letter from the Secretary of the Governor of the State of Espírito Santo, covering reports on national wheat production and citrus fruit; Official communiqué from the Institute of Sugar and Alcohol, regarding complaints received by the Council in connection with the restriction of sugar production; Official communiqué from the Banco do Brasil (Exchange Department), advising the Council that the Centro de Materiaes de Construção suggested, in a letter dated May 15th. last, the reduction of the official exchange quota on timber exports to Europe; further letter from Sr. Fernando de Almeida Prado regarding cancellation of space on vessels of the Osaka Shosen Kaisha; and other items.

A lengthy official communiqué was read, containing the commentary; of the Minister of Agriculture, Sr. Odilon Braga, on the report of Sr. Franklin de Almeida regarding the scientific organisation and supervision of the citrus fruit trade, particularly as regards export. The Minister of Agriculture was himself unable to attend the session, and due to this and the length of the communiqué, Sr. Franklin de Almeida requested that the reading of his motion be postponed to a future meeting, when he would be able to study the questions raised in the report of the technical experts of the Ministry of Agriculture.

Sr. Valentim Bouças referred to the recent session of the Club de Engenharia (Engineering Association), at which the President of the Republic was present. At this meeting, an important report on national coal was read by Dr. Luiz Betim Paes Leme, which Sr. Bouças suggested the Council should examine, due to the national interests involved. In this connection, Sr. Euvaldo Lodi recalled the investigations of the Council into the question of combustibles in the past, and requested that the matter should be given due attention at a future session.

The motion of Sr. Arthur Torres Filho in regard to the concession of facilities to street vendors and ambulatory salesmen of fruit, with a view to organising internal

markets, was also passed for study. This practice has been experimented successfully in the Argentine Republic, where the reduced selling price of fruit has been largely attributed to the competition set up by ambulatory salesmen. In accepting the motion of Sr. Torres Filho, the President remarked that, some time past, on the occasion of the discussions regarding the institution of free depôts for the distribution of fish, he had mentioned that some such centre should be organised for the fruit trade.

Passing to the material incorporated in the order of the day, the Council approved the conclusions of Sr. Euvaldo Lodi, modifying certain clauses in the text of the projected law controlling maritime and fluvial freights and general shipping regulation; as drawn up and originally presented by Sr. Victor Viana. The actual modifications have not been divulged, but it is officially stated that these do not alter the spirit of the law, although the applicability is greatly enhanced.

Accepting the proposal of Sr. Alberto Boavista, and in consideration of the petitions of the producers of Rio Grande do Sul, the Council decided to modify the system of exchange taxation on exports of rice, substituting the 35% quota by fixed specific taxes. In his motion, Sr. Boavista quoted suitable ratings applicable in view of the current prices ruling, which would correspond to the percentage at present collected, and which are rather higher than those requested by the producers. After due discussion, the Council passed the motion of Sr. Boavista, with an amendment by Sr. Euvaldo Lodi, which provided a slight reduction of taxes, which have been fixed as follows: unshelled rice, 1/6d.; brown rice, 2/-; prepared rice, 2/6d.; per 50 kilos. The exemptions previously ruling are to continue in force.

Sr. Raul Leite, acting in accordance with the resolution of the Council taken at the Meeting of May 18th. last, reported on his visit to the Director of the Lloyd Brasileiro, in regard to the collection of freight at destination on goods shipped by that Line from Manaus to Rio de Janeiro. Sr. Lacerda was able to inform the Council that his visit had been entirely satisfactory, and that instructions instituting this measure had already been emitted.

The Council passed the motion of Sr. Lennhoff Britto, against the conflicting votes of Srs. Euvaldo Lodi and Raul Leite, in regard to the suggested alteration of Custom's duties on three-wheeled delivery vans. The similarity of these vehicles to the every-day lorry or truck had been pointed out by several São Paulo importers. The speaker explained that although the present Custom's Tariff had been compiled before these vans came into extensive use, a modification of the Custom's Tariff would not be justified unless it could be satisfactorily proven that this type of van has decisive advantages over the common light delivery car in general use.

Finally, the Council passed the motion of Sr. Victor Vianna, that the project for the institution of an "international bank of compensation" submitted to the consideration of the Council by order of the President, is impracticable under the present world conditions of production and economics.

Wileman's Brazilian Review

Established 1898

OFFICES: R. THEOPHILO OTTONI, 41, 3.º ANDAR
RIO DE JANEIRO

Telephone: 23-1354 - Caixa do Correio (P. O. Box) 809
Tel. Address: "REVIEW", Riojaneiro.

Redactor Responsavel: V. S. Coelho.
Redactor Commercial: Oscar Leup.
Redac. e Administração: R. Theophilo Ottoni, 41-3º

Subscriptions (Payable in Advance): —
Brazil, 100\$000 per annum. Abroad £3 per annum.
Separate copies 2\$000. Back Number 2\$500 per copy.

ADVERTISING RATES ON APPLICATION

AGENTS:

NEW YORK: — "The Tea and Coffee Trade Journal"
79, Wall Street.
COPENHAGEN: — "The Scandinavian Shipping Gazette",
38 Vestre Boulevard.

Notice: — The Editor is not responsible for Correspondence or Articles signed with the writer's name or initials, or with a pseudonym, or that are marked "Communicated". The Editor must likewise not necessarily be held in agreement with the views therein contained or with the mode of expression.

Original articles submitted for publication must be considered, unless otherwise arranged, exclusive to and the sole property of the Review.

In accordance with the Brazilian Press Law, no correspondence or contribution will be published in this Review unless authenticated by the date, name, and address of the contributor, though not necessarily for publication.

RIO CAPE LINE LTD.

Direct Cargo Service from Rio de Janeiro
and Santos to
Cape Town Mossel Bay, Algoa Bay, East
London, Durban, and Lourenço Marques

THE JAPANESE STEAMER

Arizona Maru

(Under Contract)

Sailing 9th. July

Followed by

Arabia Maru

Sailing 10th. August

For further particulars apply to:
HOULDER BROTHERS & Co. (BRAZIL) LTD.
Agents for the Rio Cape Line, Ltd.

AVENIDA RIO BRANCO, 63/67 1st. floor
Telephones 23-0754 and 23-0588

RIO DE JANEIRO

MAILS

Sailing dates checked with Steamship Agencies on Friday previous to printing.

TO EUROPE

FROM	DEP. RIO	VESSEL	Destina- tion	Phone Rio
B. A. . . .	9	Asturias	S'mpton	23-2161
B. A. . . .	13	Cap. Arcona	Hamburg	23-5917
B. A. . . .	14	H. Chieftain	S'mpton	23-2161
B. A. . . .	17	Oceania	Trieste	23-5840
B. A. . . .	17	Antonio Delfino . . .	Hamburg	23-5947

FROM EUROPE

FROM	Arrives RIO	VESSEL	DEP. Rio	Destina- tion	Phone Rio
London . .	8	H. Princess	8	B. A.	23-2161
London . .	8	Avila Star	8	B. A.	23-5988
Bordeaux	11	Massilia	11	B. A.	23-1965
Hamburg .	12	Gen. San Martin . . .	12	B. A.	23-5917
S'mpton .	15	Arlanza	15	B. A.	23-2161
Genoa . .	17	C. Biancamano	17	B. A.	23-5840

TO U. S. A.:

FROM	DEP. RIO	VESSEL	Destina- tion	Phone Rio
B. A. . . .	6	Delmundo	New York	23-2009
B. A. . . .	11	Eastern Prince	N. Orleans	23-1151
B. A. . . .	18	American Legion . . .	New York	23-6751

FROM U. S. A.:

FROM	Arrives RIO	VESSEL	DEP. Rio	Destina- tion	Phone Rio
New York	12	Southern Prince	12	B. A.	23-0754
New York	19	Western World	19	B. A.	23-2009

TO SOUTH AFRICA & JAPAN

FROM	DEP. RIO	VESSEL	Destina- tion	Phone Rio
B. A. . . .	9	Arizona Maru	Yokohama	23-5988

TO SOUTH AFRICA & JAPAN

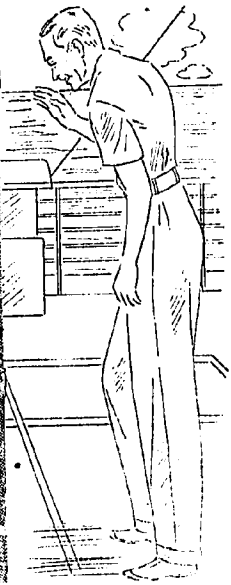
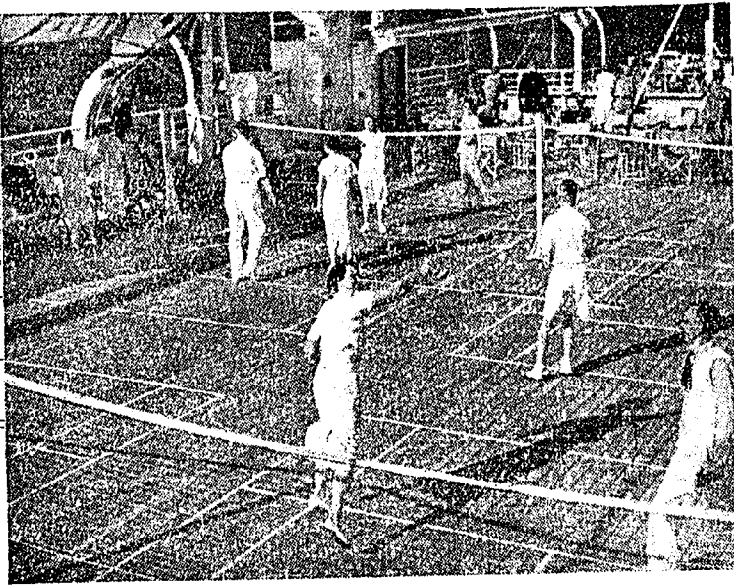
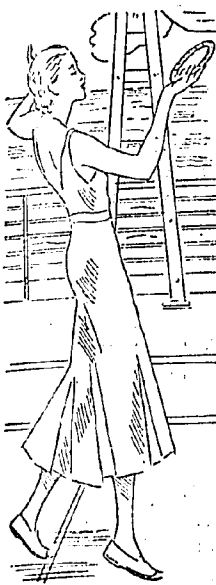
FROM	Arrives RIO	VESSEL	DEP. Rio	Destina- tion	Phone Rio
Kobe . . .	30	B. A. Maru	30	B. A.	23-5988

AIR-MAIL SERVICE

For Closing Hours of Mails consult Agencies.

FROM	Duc Rio	SERVICE	DEP. Rio	Destination
U. S. A. . .	8	Panair	10	B. A.
Natal . . .	8	Condor	10	Porto Alegre
B. A. . . .	9	Panair	10	Belem
P. Alegre .	9	Condor	10	Natal
B. A. . . .	11	Condor	11	Europe
Europe . .	—	Condor	12	Porto Alegre
B. A. . . .	12	Air France	12	B. A.
B. A. . . .	12	Panair	13	Manaos & U. S. A.
Manaos . .	12	Panair	13	Porto Alegre
P. Alegre .	13	Condor	—	—
Europe . .	14	Condor	14	B. A.
B. A. . . .	14	Air France	14	Europe

All B. A. Services make connection with West Coast' Planes



Games and Pastimes for All On the many broad, sunny decks of Blue Star ships lovers of sport can play tennis, quoits, golf — or just laze in the sun listening to the sea and wind.

Northbound

AVILA STAR June 30
ANDALUCIA STAR July 28

Southbound

AVILA STAR June 8
ANDALUCIA STAR July 6

Blue Star Line

★ THE LINE OF COMFORT - SERVICE - COURTESY ★

Cotton

The Bulletin of the Ministry of Commerce of the United States published an article on the Brazilian Cotton exports to Japan, particularly emphasising the falling off of exports to Germany in contrast.

This interest in the progress of Brazilian cotton in the great consuming markets is becoming almost universal, and the once-ridiculed possibility of any commodity ever replacing, or even offering serious competition to coffee is now acknowledged as almost probable. More, economic experts have openly declared that such a state of divided trade would materially benefit Brazil, which for over three centuries has looked solely to one article for building up international commerce.

The Japanese imports from Brazil are expected to be much increased during the course of the current year; in retaliation of the elevation in taxes on Japanese textiles imported into America, Japan will purchase less American raw cotton, and it is probable that a large proportion of the consequent shortage will be met from Brazil.

Petroleum

The Commission appointed to investigate the Petroleum deposits returned from a tour of the most well-known regions last week, but the report of the Commission is not to be published. According to general declarations made to the public, however it is certain that the Lobato district of Bahia is considered worth exploiting, though this will depend entirely on the results of the analyses at present being carried out.

The deposits in the State of Alagoas, at Riacho Doce, have also proved to be no mere rumour. Several geologists of repute denied all possibilities of there being any worth-while deposits in this State, but soundings have afforded tangible evidence of what is expected to be a practicable oil-field.

A well-known writer and engineer in João Pessoa, Capital of the State of Parahyba, published a lengthy report and commentary on prospections in that State, and maintains that there are deposits of some value in the Interior.

Dr. Hldefonso Simões Lopes read a lecture on Brazil's Petroleum possibilities which caused an excellent impression, for this able speaker summed up the history of Petroleum in national territory, and showed that everything possible was being done to hasten prospections. Dr. Simões Lopes also pointed out that the 60,000 Contos expended on prospections during the past 16 years had been well employed, but that now, the deposits being assured, a verba of at least ten or twenty thousand Contos should be budgetted annually for this service.

The result of the analyses of the National Department of Mineral Production is anxiously awaited by the country at large.

Central do Brasil Rly.

The reinforced concrete work on the Central Railway workshops at Deodoro has been completed, together with the Supervisory Control station and a sub-station (Nº 2), also in that suburb.

In accordance with the decision of the Secretary of Finance of the State of Rio de Janeiro, all wheat products

Friday

Phone Rio

-2101
-5947
-2161
-5840
-5947

Phone Rio

-2161
-5988
-1965
-5947
-2161
-5840

Phone Rio

-3-2079
-1-1131
-0-6751

Phone Rio

-0-6751
-2-000

Phone Rio

-5988

Phone Rio

-5988

A.

nes

transported from the Moinho Santista to the Moinho Fluminense on Central lines are to be exempted from imposts and taxes.

The Minister of Finance has authorised the Central Purchasing Commission to import 10,000 flat rail chairs.

Shipping

The "Daily Herald" recently announced that the British Government intends subsidising the construction of a sister ship to the "Queen Mary" to the extent of five million Pounds. This has not been confirmed, though it is said that a declaration will be made on the return of the "Queen Mary" from the United States.

The maiden voyage of the "Queen Mary" was in every way satisfactory, the crossing being made in 4 days 12 hours and 24 minutes, from Cherbourg, at an average speed of 29.133 knots. As previously announced no bid for the Atlantic record will be made until the engines have been broken in, though the machinery of the "Queen Mary" does not really require this.

London telegrams inform that the furniture and fittings of the old "Mauretania" are to be sold by auction. The vessel itself is to be handed over to the Ship-breakers by the end of September.

Aviation & Air Mail Services

The construction of a large commercial aerodrome in São Paulo is much discussed, there being two alternative projects: either the present Campo do Marte will be improved and enlarged, or a completely new field will be opened, probably in the suburb of Brooklyn. This problem has become of moment due to the fact that the new machines of the V. A. S. P. Co. for the São Paulo-Rio de Janeiro service cannot use the Campo do Marte in its present condition, being too heavy. There is also some doubt in regard to the serviceability of the 1,000 metro course which is to be completed at the Campo do Marte shortly; however, this field will probably be used temporarily, and perhaps even permanently, after the contemplated new landing ground is made over, and embankments raised to minimise the dangers of floods from the adjacent river Tietê.

The "Air-France" Company has inaugurated the regular passenger service from London to Barcelona, which is a five hour flight. Further, the Paris-Dakar passenger service has also been inaugurated, the first plane making the flight in under 22 hours.

The State Government of Goyaz has ordered construction of a small aerodrome at Leopoldo de Bulhões near Goyania, the new Capital.

Municipal Chamber

The Prefect of the Federal District, Canon Olympio de Mello, presented his proposed budget to the Municipal Chamber last week. Receipts are estimated at Rs. 287,023:800\$000, based on the 1935 figures, there being no allowance made for possible alterations in taxes, rates, etc. Expenditure is estimated at Rs. 342,954:470\$000, there being computed in this, however, a wide margin of latitude. The prospective deficit of fifty odd thousand Contos will, in the final budget, be considerably reduced, and is in any case, well covered by margins.

The Municipal Club submitted to the Municipal Chamber in an official form, a suggestion fixing the municipal holidays for the Federal District, as follows:

January 18th. — Promulgation of the "Lei Organica".

January 20th. — Foundation of the City of Rio de Janeiro.

July 5th. — Homage for the famous "Dezoito de Copacabana".

September 20th. — Municipal functionaries' Day.

The Promulgation of Law has hitherto been celebrated on September 20th., but since the new Law was approved on January 18th, 1936, it is maintained that the date should be changed. It must be taken into consideration that, quite apart from these four Municipal holidays — which will, of course, only be applied within the Federal District — there are eight regular National holidays in the year, and three optional.

In regard to skyscrapers, the Prefect solicited the attention of the Municipal Chamber to the rapid "burial" of several of the city's most famous beauty-spots behind a mass of unsightly sky-scrapers. The Prefect mentioned the Gloria hill, surmounted by the Chapel of Our Lady, in particular. At the time of going to press, nothing has been decided, but developments are hopefully anticipated — except by the architects and builders.

The President of the Municipal Chamber promulgated a Decree by which any Casino, Cabaret, Wireless Broadcasting Station, or Gambling House employing a band and orchestra, or entertainment troupes, must employ in such at least two Brazilian-born artists for every five employed. Further, no orchestra, except those of the official opera season, may be conducted by any other than a Brazilian born conductor, and at least one half of the music played must be national. Penalties for non-compliance with this law include a five Conto fine for the first offence, and cancellation of licences for subsequent offences.

Drinks

In the statistical section of this week's issue, our readers will find the monthly statistics of Brazilian imports of Wines, Spirits, Liqueurs, Beverages, etc., for the first quarter of 1936. The totals show a decrease of some 136 tons and £3,500 in value over the 1935 first quarter; this drop is particularly noticeable in the figures for Gin and Vermouth, both of which are now manufactured in the country.

(See Statistical Tables).

Motor Cars

Ford head the list of imports of Motor Cars into Brazil during March, with 968, followed by Chevrolet with 450. The total for March was 1,762 cars, as against 1,863 in March 1935, and 616 for February 1936. The ever-increasing figures of German cars, — Opel, D. K. W., Horch, in particular, — is noticeable.

(See Statistical Tables)

Cement

Brazilian Cement imports during March 1936 totalled 6,319 tons, value £7,826, against 11,186 tons and £11,552 in March 1935, and 5,954 tons and £6,662 in February 1936. Of this total, 6,237 tons was of German origin, over 1,000 tons more than in March 1935; Great Britain's total dropped from 1,556 to 38 tons.

(See Statistical Tables)



Special Displays
IN RIO AND S. PAULO

A GOOD CARPET lends an air of prosperity and comfort to the most unpretentious room or office

For home and office we recommend our fine WILTONS and PLAIN BODY CARPETS for excellent wear and exceptional value

OUR PLAIN SEAMLESS CARPETS IN ALL WIDTHS ARE A NEW FEATURE

We carry a fine assortment of PERSIAN and ORIENTAL CARPETS of GUARANTEED ORIGIN, including BOKHARAS, TABRIZ; MESHED, AFSHAR, SHIRAZ; also the hard wearing CAUCASSIAN KELIM RUGS which are both a bargain and an investment at the low prices we are offering.

OUR LATEST ARRIVALS FROM EUROPE include the famous ANGORAS and KANDAHARS in Oriental designs and soft colourings which blend with any decorative scheme.

Our fine washed CHINESE, ORIENTAL and GRECIAN carpets look like and last a lifetime

MAPPIN STORES

Rio: Praia Botafogo 360 and São Paulo

TELEPHONE 26-4015

Iron & Steel Imports of Iron and Steel into Brazil during the first quarter of this year totalled 26,332 tons, as against 26,129 tons in 1935. Values were £192,071 in 1936 and £174,438 in 1935.

(See Statistical Tables)

Apart from purchases for the Central Central Purchasing do Brazil Railway, the Central Purchasing Commission of the Federal Government has been authorised to obtain the following articles:

- 1) 12,000 reams of white paper, watermarked "Casa da Moeda", for the Mint.
- 2) One metal reduction machine, L. Janvier, E. L. B. Erchot & Co., type 3, also for the Mint.
- 3) Numerous "Creed" accessories, for telegraphic machinery of the Department of Posts and Telegraphs.

Rice Exports Exports of Rice from the State of Rio Grande do Sul during the month of May last totalled 300,426 bags, of which 147,971 bags were shipped to other national ports, and 152,455 bags overseas.

Vegetable Oils According to the new import regulations of the American National Cotton Seed Products Association, all imported vegetable oils competitive to national cotton seed will suffer a duty of five Cents per pound. The Director of the Association announces that the tax will be applicable to Brazilian vegetable oils, in consideration of the Trade Pact; the Brazilian product most seriously effected would have been Bubassu Oil, though, thanks to the Agreement, exporters may breathe freely.

D. N. C. As an immediate result of the resolution of the Departamento Nacional do Café to liquidate purchases at sight,

a Notice was published on June 1st, intimating that the thirty day period for presentation of declarations of sale would be shortened to fifteen days. This modification is calculated to speed up the purchases still further, and has been received with general satisfaction. Many purchase invoices have already been liquidated at sight, and a São Paulo coffee writer hails this as a great boon, particularly in consideration of the fact that, under the previous system, the bills were discounted at 9% interest immediately on receipt. The sight payments are said to ease the market considerably, due to the rapid movement of large quantities of coffee.

In regard to the classification of samples by State Institutes, a Notice was published to the effect that the Institute of Minas Geraes could effect classifications of samples, but that in the event of any difficulty arising, the D. N. C. would re-classify the coffee in question, the result being considered final.

The Consulting Council did not meet on the 3rd. instant, but on Saturday, June 6th. The report of the meeting has not been published up to the time of writing, though it may be distributed before going to press. Members are as follows:

Commercial Representatives:

Santos market — Sr. Assumpção Netto.
Rio market — Sr. José Mendes de Oliveira Castro.
Victoria market, — Sr. José Prado.
Paranaguá market, — Sr. Bráulio Ferraz.

State Representatives:

São Paulo, — Sr. Quartim Barbosa.
Rio de Janeiro, — Not elected as yet.
Espírito Santo, — Sr. Sebastião Gama.

Paraná — Sr. Oliveira Franco.
 Minas Geraes, — Sr. Orlando Flores.
 Bahia, — Sr. Mauro Cabral.
 Pernambuco, — Sr. Lafayette Velloso de Rezende.
 Goyaz, — Senator Nero Macedo.

The Bulletin of the Centro do Comercio de Café of Rio de Janeiro publishes an excellent article on the proposed Sacrifice Quota for the 1936/37 crop. As the crop is estimated at some twenty million bags, and there is no possibility of increasing exports by a fantastic twenty-five percent, the sacrifice quota will have to be at least 5,000,000 bags, as it is officially acknowledged that there will be a surplus of at least four million bags from the present crop. The proposal that this sacrifice quota should be absolutely unrecompensed is not to be countenanced, the minimum of Rs. 30\$000 per bag being still on the low side, though at this rate the loss of growers would be covered by the firm prices resulting on higher type coffees. The cost to the D. N. C. at this figure would be about 170,000 Contos, estimating on an average of 4\$000 for transport charges. The article terminates on an optimistic note, by saying that this is no time to ask if the sacrifice policies are to continue for ever; rather should the future be faced in the realization that the safety of coffee is not to be attained, in the words of Malherbe, "dans l'espace d'un matin", but rather by the hard work of many years.

Later: The session of the Consulting Council held at 3.0 p. m. on Saturday last was, as was to be anticipated, merely an inaugural session.

Sr. Arthur de Souza Costa, Minister of Finance, presided; the session was attended by many well-known personages in the coffee world, including Sr. Cesario Coimbra. The member for Minas Geraes, Sr. Orlando Flores, did not attend, and disappointment as manifested due to the fact that Sr. Sylvio Figueira had not been nominated the representative of the Rio market.

The President opened the session by outlining the duties and finalities of the Council, which are already familiar to our readers, and the member for São Paulo, Sr. Quartim Barbosa, replied in the name of the coffee States, qualifying the sentiment of his fellow members to collaborate to the best of their several abilities for the good of the trade. Sr. Souza Costa thanked the São Paulo representative, and, in closing the meeting, gave a rapid summary of the participation of the Government in coffee negotiations since 1930, and hoped that the energetic actions of the D. N. C. would be maintained by closer collaboration with the trade through the Consulting Council.



BREVITIES

The President of the Chamber of Commerce of Rio de Janeiro, (not the British Chamber), on arrival in Hamburg last month, made tentative enquiries as to the possibility of organising a branch of the Chamber in that city.

The Rural Federation of Rio Grande do Sul has been notified of the shipment from the makers in Germany of a large quantity of fencing wire. The Federation will dispose of this wire among farmers at very low rates, there being exemption of duties on same.

The President of the Republic has approved the charge of one milreis entry to the quays. This has been collected for some time now, but only at the main entrance.

An increased credit of four thousand Contos over the budget for construction and maintenance of railroads has been requested by the Minister of Transport. This is to cover the completion of an 83 kilometre stretch of the unfinished Jaguary, São Thiago, and São Borja Railway.

The epidemic of typhoid fever which has broken out in the Interior of the State of São Paulo is not serious, and at the time of writing, the Department of Public Health is rushing squads of sanitary men to the affected districts.

The Purchasing Department of the Municipal Prefecture has opened a call for tenders for the supply of stationery and writing material for the Cartridge Factory of the Army. Steel furniture and typewriters, calculating machines, etc., are also included. The Ministry of Justice requests quotations for the furnishing and general installations in the new building of that Ministry.

A large modern isolation Hospital is to be constructed at Ribeirão Preto, subject to the approval of plans by the Department Education and Public Health.

A large inflammables deposit exploded in Curitiba, Paraná, six people being killed, and twenty injured. Two houses were completely destroyed in the vicinity, and windows shattered throughout the city. This is the worst disaster which has overtaken the State for many years, and commerce was paralysed for the better part of a day.

The Brazilian mission to Japan will consist of a Directing group, and various representatives from States of the Union, though the Committee has not yet been organised. This Economic Mission will return the visit of the Japanese Mission to Brazil last year.

The Companhia Florestal Brasileira is mounting a complete tanning factory in Porto Murtinho, Matto Grosso

An extradition treaty has been signed between Brazil and Mexico, after some considerable delay.

A wireless broadcasting station is to be installed in the city of Pelotas, Rio Grande do Sul, shortly.

The Minister of Transport has solicited the payment of Rs. 243,145\$900 to the Amazon River Steam Navigation Co., being the Government subsidy due for services effected during January of the current year. A few days later, the same indent was made for Rs. 256,854\$000, for services during February, 1936.

Experiments with traffic in this city are to be carried out, though no date has yet been fixed. The motor omnibuses with terminal at the Palace Hotel, serving the southern suburbs will not run on the Avenida Rio Branco at all, but down the Rua Mexico, which is the regular return route. Other measures are contemplated.

The Companhia Electro-Chimica Fluminense has been inaugurated in Alcantara, a suburb of the Capital of the State of Rio de Janeiro. The annual production of the Company is as follows: 1,080 tons of Caustic Soda; 230 tons of liquid chlorine; 1,000 tons of chlorate of Lime; 1,000 tons of Hydrochloric Acid, and 1,000 tons of sanitary water.

The Department of Mineral Production calls attention to the Decree which regulates the registry of mining claims. All mines which are not officially registered before July 20th, 1936 will be forfeited, and considered Government property.

In reply to an enquiry, the Minister of Transport has announced that the closing date for tenders to be presented for the exploitation of navigation services of the upper Amazon is not fixed, but will be from twenty to sixty days after opening. Further, under a Decree of October 1935, only National Companies may compete.

The Castor Seed trade of the State of Bahia ranks second to Cocoa only, coffee being less important. The production of Castor Seed in this State during the first four months of this year totalled 178,091 bags of 60 kilos. It is hoped that the annual production will soon reach the million mark; the poor railway service.

A parcel of 127.5 kilos of gold from the St. John del Rey Mining Co. Ltd., value at Rs. 2,493,640\$000, arrived at the Mint last week, consigned to Messrs. Wilson, Sons & Co., Ltd.

THIRTY FIVE YEARS AGO

Extract from "The Brazilian Review" of

11th. June 1901

A Concession for the construction of a line of railway from a point on the Rio Branco, in Pará, to the frontier of British Guiana, has been sanctioned by the President of the Republic. The next thing is to get the money!

Burning Coffee; — Little by little good sense reasserts itself and the project of destroying 20% of the crop is condemned. At a meeting of the National Agricultural Society a motion of Dr. Wenseslau Bello to the effect that such a procedure was "arbitrary and contrary to economic principles, as well as inefficient", was unanimously approved.

"O Estado de São Paulo" opposes the unification of the contracts of the São Paulo Light and Power Co. but it's arguments do not seem to be of much account.

A bill authorising the Executive to revise the contract of the Light and Power Company for working the Santo Amaro steam tram line has been approved by the Chamber on third reading and now goes to the Senate.

The Municipal Council of Campinas is calling for tenders for lighting that city with electricity.

Cotton is being tried in the district of Feira Sant'Anna with good prospects of success.

The last census gives a population of 2,1224,000 for the State of Bahia.

Exchange:

£ — 20\$728
— 4\$269.

Coffee Loaded for the crop up to June 7th. —
9,951,218 bags.

GULF SOUTH AMERICA LINE

(SWEDISH AMERICA MEXICO LINE)

Managing Operators:—

PLANT SHIPPING COMPANY INC.

Whitney Building, New Orleans, U. S. A.

Sailings for New Orleans

Sparreholm

Sails Santos June 30 for Rio
Victoria and Thence New Orleans.

GENERAL AGENTS FOR BRAZIL

THE FEDERAL EXPRESS Co.

London Financial Position

MAY, 29, 1936

Fears as to the future of French and Swiss francs as well as Dutch guilders have become intensified judging from the extent of the selling of those currencies this week, more especially forward. In the case of French francs the discount for one month ahead rose at one time to a figure equivalent to an interest rate of over 50 per cent per annum, thus indicating a stronger belief that the currency will be ultimately devalued. Such fears have become more acute with the approach of the date, June 1, when a Socialist government will assume power in France, for according to reports its programme will include various measures of a disturbing character such as the reorganisation of the Bank of France and a heavy expenditure upon public works. The last return of the State Bank, however, showed a much smaller loss of gold than in the preceding week, and it may be that the new high record established by the Bank of England note circulation this week was only partly due to the hoarding of our notes by foreigners who distrust their own currency. In the main it represents an increased demand for cash for the Whitsun holiday, and there is little doubt that the spending power of the people is greater now than it was a year ago. There is talk of the possibility of dearer money. This talk was started by the reference of the Chancellor of the Exchequer to the level of interest rates. Certainly the resources of the banks have been diminished of late, but there is no reason to expect a substantial rise in money rates, especially as it is possible for the authorities to control the position.

It is not surprising that Stock Exchange business has fallen off a good deal recently. The attractions of racing have diverted attention, and Derby week will be followed by Whitsun. Moreover the present account is one of 21 days duration, and according to Stock Exchange tradition such accounts are invariably unsatisfactory. Rather more attention is being given to foreign politics as well as the possibility of currency devaluation in Europe. Gilt-edged securities have been affected somewhat by the poor reception accorded most of the recent Municipal loans as well as the talk of dearer money. Argentine rails are a better market owing to the announcement that interest payments on Argentine Gt. Western and B. A. & Pacific 2nd debenture stocks are to be brought up to date. It is recognised that this does not necessarily mean that these companies are earning more, but it is regarded as an indication of an improved situation. The chairman of Primitiva Holdings and of the Province of B. A. Waterworks Co., uttered some rather severe criticisms of the Argentine authorities at the annual meetings of these two companies. In the case of the Waterworks Company he showed that the stiff taxation which now has to be paid prevents the company from meeting the requirements of the residents of Buenos Aires, while he described the profit obtained by the Argentine Government from the exchange as tantamount to additional taxation of English-owned companies that have to effect remittances to London. Social legislation also adds considerably to the working expenses.

A satisfactory development was the declaration of a 2½ per cent tax free dividend by the Rio de Janeiro City Improvements Company. This caused a rise in the shares to 12s. Other Brazilian securities have shown very little movement. Peruvian Corporation issues are higher on the reference in the annual report of the Council of Foreign Bondholders to the great improvement in economic conditions in the country.

Irmãos Araujo

Typewriters, Calculating and Addressing
Machines

GENERAL OVERHAULING & REPAIRING
WORK GUARANTEED ONE YEAR
STEEL FURNITURE — FOR OFFICES

RUA SÃO PEDRO, 57 --- TEL. 23-3319

Among the weak features of markets recently is a severe fall in Cable & Wireless stocks, partly owing to the absence of any scheme for dealing with the Preference arrears, but more because of the references by the chairman at the annual meeting to the severity of foreign competition. The number of direct wireless services has increased considerably in recent years, mostly by foreign governments desirous of increasing their foreign trade, and in most cases these services are run at uneconomic rates. What the chairman complained of most was the establishment of services between foreign countries and Empire points where adequate facilities for cabling already existed. If this becomes more marked in the future he indicated that Cable & Wireless would experience difficulty in making profits.

Some securities were depressed by the forced closing of speculative positions, particularly in Mexican Eagle Oil shares, and at one time it was feared that a failure would result. Evidently the necessary help was afforded, and there was no disclosure of difficulties at the last Stock Exchange settlement. Probably there has been rather too much speculation lately in certain directions, but the position is now healthier, and when the Whitsun holiday is out of the way there may be a revival of speculative activity.

Bank shares are rather lower in sympathy with the dullness of gilt-edged securities. At this week's meeting of the British Bank of South America the chairman gave statistics showing the deterioration of the economic condition of Brazil since 1930, but he referred to the improved outlook for products other than coffee. Bank of London & South America shares are easier presumably on the results of the British Bank of South America, and Anglo-South American Bank shares are still quoted at a substantial discount. With the expansion in the note circulation of the Bank of England mentioned above the coin and bullion has reached the new high record of £207,263,703, thanks mainly to purchases of gold from the Exchange Equalisation Account. Since the beginning of this year the Bank has increased its gold holding by £6,981,000, and if the current price of the metal were taken (instead of the old figure of about 85s. per ounce which the Bank still adopts) the present Stock would be shown at about £341,000,000 — a difference of £134,000,000. The latest return of the Bank of France shows a gold holding equal at the current exchange rate to £766,000,000. During 1935 the total exceeded £1,000,000,000.

EUGENIO KAHN

CUSTOMS HOUSE BROKER

Best of references — English spoken

Rua 1º de Março, 85-5ª, Sala 26 Tel. 23-2958

RIO DE JANEIRO

LONDON PRODUCE NOTES

MAY, 29, 1936.

Rather quiet conditions have ruled on the London Produce Markets as is generally the case during a period immediately preceding a holiday.

SUGAR - In the sugar section slow demand for refined sorts has again been a disappointing feature and this cautiousness on the part of buyers has kept refiners from adding materially to their stocks of raws. There was also a rumour during the week that Cuba would exceed the decreased production of 2,515,000 tons by about 200,000 tons, but this was officially denied. In any case, no sugar in excess of authorised production will be permitted to be exported and will have to be converted into molasses or utilised for home consumption. Business in raws has been confined to parcel lots of Empire and foreign 96 per cents for prompt and June shipment from 4/9 to 4/8½d. per cwt. c. i. f., but later it was reported that about 20,000 tons had changed hands at the latter figure.

RUBBER - The rubber market has been very quiet. At present there is no speculative activity and business generally is checked by the uncertainties surrounding some of the Continental exchanges. There was, however, sufficient trade demand to absorb the limited amount of selling of spot and nearby shipment, and a little liquidation in the June position. American buying has been on the small side. According to the Department of Commerce, Washington, the output of motor vehicles in the United States during April exceeded the half-million mark, for the first time since July 1929. The total for the first four months of the current year was returned at 1,585,556 units against 1,536,041 units in 1935.

COCOA - There has been a very firm market for Accra cocoa, and the stubbornness of holders of actuals has resulted in a rise of fully 1/- per 50 kilos to 26/- for old crop and 26/1½d. for new crop, per 50 kilos to 26/- for old crop and 26/1½d. for new crop, c. i. f. Continent. The New York market has also ruled firm with good trade buying in evidence. Arrivals in that country during the next few months are expected to be below consumptive requirement; and local stocks will therefore have to be drawn upon.

COFFEE - The demand at the coffee auctions was very slow. The bulk of the Costa Rica country cleaned, was unsold while the London cleaned sorts made about valuations.

TEA - There was a better market for Indian teas and all grades sold well at fully steady to occasionally slightly higher prices. Ceylon kinds were again weak, with medium broken Orange Pekoe fully 1d. per lb. easier. Good teas were also easier but met with very fair competition. Common sorts were barely steady.

JUTE - Jute values continued to decline on reports of favourable conditions for the growing crops. A larger business was done at the lower level which caused prices to rally but the market closed easier again with business in First Marks, old crop, down to £17.13.9. New crop, Aug/Sept changed hands at £17.17.6. while new lightnings sold at £16.17.6. per ton c.i.f.

São Paulo Railway

EXCELLENT PASSENGER AND
GOODS TRANSPORT SERVICES
FROM SANTOS TO SÃO PAULO
AND THE INTERIOR

SPECIAL FACILITIES FOR TOURISTS

Door to Door Collections
and Deliveries of Luggage, Parcels
and Merchandise
in conjunction with

CIA. GERAL DE TRANSPORTES

Information: -

S. P. R.	C. G. T.
Estação da Luz	R. Mons. Felippo, 3
Caixa Postal "C"	Caixa Postal "C"

S ã o P a u l o

TIMBER - There was a fair demand for mahogany during the past week with rather more interest shown in British Honduras and Seccondee. A steady demand was experienced for American quartered oak, but plain oak planks were in quieter request. There was a little inquiry for Japanese oak logs, with a moderate turnover in lumber. A good business was reported in European oak but there was less demand for beech. Wide boards of African Iroko were in demand but narrow specifications were not wanted.

FRUIT - Oranges were a steady market; Brazilian, 112, quoted 10s.6d.; 126, 11s. to 12s.; 150, 13s. to 13s.6d.; 176, 15s.6d. to 16s.; 200/252, 16s.9d. to 19s.6d.; California, boxes, 176, 15s.9d.; 200, 17s.3d.; 216/252, 17s.3d. to 20s.6d.; South Africa, boxes, 126, 12s.6d.; 150, 13s.9d. to 14s.3d.; 176, 15s.; Valencia, ½ cases, 240, 15s.3d. to 18s.50d., 20s. to 21s.6d. Bananas had a fair demand; Canary 12s. to 17s. per crate. Brazilian 7s. to 7s.6d. per 10 doz. Graperfruit. - Good demand; Brazilian 64, 15s.; 80, 17s. to 17s.6d. Imports last week from Brazil included 104,000 boxes of oranges. Imports last week from Brazil included 104,000 boxes of oranges 8,000 boxes of graperfruit and 700 boxes of lemons.

HIDES - Frig-type hides were barely steady with B.A. ox at 5d.; Rosario ox at 4½d., and Cordoba ox at 5½d. There was some further business in salted Brazils including Mendes firsts at 1¼d., and Barretos at 4d. Dry River Plates were quietly steady with B. A. Americans at 6½d.; B. A. Becerros 6½d.; B. A. Summers 5½d. and B. A. Anchos at 5½d. per lb.

BAHIA COCOA MARKET REPORT

BAHIA, 28th. of May, 1936.

STATISTICS: —

	Bags
Stock on 31st. March	26,979
Receipts during May to date	8,915 35,894
Shipments overseas to date	10,135
Bahia stock, 28th. May	25,759

Since our last report dated 22nd. inst. the market has kept firm and strong, and in view of the New York market also showing a firm tendency with slowly rising prices, new sales have been made not only to New York but also to other less important markets, that have started showing interest for near positions — June and July.

We can say that Bahia sales have exceeded 1,100,000 bags, at least, and we expect that up to the end of July about 400,000 bags more will have been disposed of by Bahia exporters.

Our opinion is that the future of the market will lie entirely in the hands of the big Accra shippers within a few weeks. Considering that Bahia has already disposed of cocoa the flowering of which has only now started to appear on the trees, and that if everything runs normally the total output ought to attain 2,000,000 bags, it may be concluded that today there is only a disposable balance of about 200 to 300 thousand bags to face the demand during the next six or eight months.

Harvestings have been hindered and delayed owing to bad weather and it appears that arrivals for next month will not be as large as previously expected.

This fact might also influence prices up to a certain extent as shippers might not have enough cocoa to fulfil their June/August commitments in June, and therefore such contracts may be left unfulfilled until the last month, which may also be the case should a demand for actuals set in by and by as expected.

We foresee higher prices in the near future, as we strongly believe that Accra is holding back until Bahia has sold enough to make it risky to sell further and then the holders of Accra will step in and dictate their own prices.

In the long run all this prediction may prove wrong, but the present statistical position of the commodity and the information we have been able to collect in the main consuming markets enable us to see the situation in such bright colours.

We quote to-day on Superior c. q. as follows:

Shipment.	year	per lb.
C. & F. New work this	5.60/5.62	
C. & F. Amsterdam do.	do. 26/3	per kilos
Buenos Aires do.	do. 45.05	per 100 kilos
Montevideo do.	do. Lit.-78. 5 ^o	per 50 kilos
Genoa do.	do. F. O. B. Bahia	

CORREIA RIBEIRO & CIA

CEMENT

BRAZILIAN IMPORTS - MARCH 1936

Origin	Tons	Value cif
Germany	6,237	1,104,882\$
U. States	42	29,398\$
France	2	1,739\$
Great Britain	38	10,042\$
Total	6,319	1,146,061\$
Equivalent in £		7,826

Destination	Tons	Value cif
Manaos	260	68,091\$
Pará	479	101,410\$
Maranhão	541	110,497\$
Parnahyba	135	32,414\$
Fortaleza	1,116	209,535\$
Natal	87	32,148\$
Cabedello	4	3,224\$
Recife	1,089	176,513\$
Bahia	837	121,293\$
Rio de Janeiro	415	83,511\$
Santos	23	6,476\$
Rio Grande	242	36,868\$
Pelotas	275	48,879\$
Porto Alegre	816	124,176\$
Total	6,319	1,146,061\$

IMPORTS BY ORIGIN - IN TONS

January to March 1936 - 1935

Origin	1935	1936	1935
Germany	12,136	12,059 +	77
Belgium	—	11,677 —	11,677
U. States	50	66 —	16
France	2	— +	2
Great Britain	7,174	3,546 +	3,628
Holland	—	1,359 —	1,359
Italy	—	25 —	25
Sweden	238	1,501 —	1,263
Sundries	10	771 —	761
Total	19,610	30,995 —	11,355

IMPORTS JANUARY TO MARCH 1932 TO 1936

Years	Tons	Value cif	£
1932	31,108	4,273,822\$	55,200
1933	52,609	5,006,878\$	77,500
1934	16,636	1,968,145\$	20,700
1936	19,610	3,189,175\$	21,500
1935	30,995	3,672,593\$	30,800

Note: See N.º 18 — Page 415.

Wileman's Brazilian Review

THE MIRROR OF BRAZILIAN BUSINESS

Subscription abroad £ 3.0.0d.

BRAZIL 100\$000

Payable in advance with order

MOTOR CARS

BRAZILIAN IMPORTS — MARCH 1936
DESTINATION AND MARKS

PARA'		FORTALEZA		NATAL		CABEDELLO		RECIFE		BAHIA	
Ford	2	2		Ford	3	3		Ford	10	10	
Reo	1	12									Ford
				Ford	39	39					
											Ford

G. Paige	5										
Hudson	5										
Terraplane	2										
RIO DE JANEIRO											
Adler	9										
Chevrolet	8										
Chrysler	3										
Cadillac	1										
Dodge	6										
D. K. W.	18										
Dictator	4										
Ford	1										
G. Paige	37										
Horch	1										
Lincoln	9										
Nash	7										
Plymouth	72										
Unenumerated	1										
SANTOS											
Adler	13										
Buick	25										
Chevrolet	432										
Chrysler	3										
Cadillac	1										

D. K. W.	5										
Ford	900										
G. Paige	7										
Hudson	17										
Lincoln	16										
Oldsmobile	2										
Plymouth	1										
Opel	55										
Packard	5										
Pontiac	12										
Terraplane	3										1.497

ITAJAHY

Adler	2	2
-------	---	---

PORTO ALEGRE

Garant	3	3
Imports — March, 1936		1.742
Ditto Ditto 1936		1.863

Note: See N.º 20 - Page 470.

(To be continued)

DRINKS

Brazilian Imports — January to March 1936

Commodities	Kilos	£
Mineral waters for the table	2.490	99
Alcoholic and Fermented beverages	11.511	881
Brandy	1.591	390
Genebra	5.926	541
Gin	658	54
Whisky	32.440	5.798
Beer	3.721	237
Other drinks fermented	441	21
Liqueurs and Syrups	1.554	228
Grape juice	2.192	142
Fruits juices, unenumerated	103	7
Vermouth, bitter and similar beverages	71.576	4.115
Champagne and other sparkling wines	9.664	2.354
Sweet wines (Oporto and similar)	49.701	3.332
Table wines	981.594	18.335
Imports 2 months 1936	1.175.162	37.181
Ditto Ditto 1935	1.311.282	40.659

Note: — See N.º 20 Pag. 469

IRON AND STEEL

Brazilian Imports — January to March 1936

Commodities	Kilos	£
Steel, bar and rod	1.496.701	17.562
Steel plates and sheets	752.497	7.643
Special steel for tools	115.086	2.127
Hoop and strip steel	479.073	6.088
Iron, bar and rod	3.641.370	48.207
Iron galvanized plates	7.081.666	51.578
Hoop and strip iron	2.300.516	20.759
Pig-iron or cast-iron	1.924.058	15.341
Y. T. U. Z. section iron	116.522	408
Iron and steel filings	3.048.365	17.147
Iron and steel, unenumerated	2.334	89
Steel iron solders	239.365	2.068
	124.854	3.019
Imports, 2 months 1936		192.071
Ditto Ditto 1935	26.322.417	174.433

Note: — See N.º 20, Page 470

DEN NORSKE SYD-AMERIKA LINJE

(The Norwegian South America Line)

Regular Service to Denmark, Finland,
Norway, Baltic, River Plate
& vice-versa with 8 fast going
MODERN DIESEL MOTOR LINERS

NEXT SAILINGS

FOR RIVER PLATE

FOR FINLAND, DENMARK
NORWAY & BALTIC

M/S "BORGLAND" 10th. June

M/S "BRA-KAR"
ANGRA DOS REIS, 21st. June
Rio de Janeiro 22nd. June



The vessels dispose of accommodation for a limited number
of 1st. class passengers for Scandinavia and also for London
& Dieppe with transshipment in Tenerife.

For further particulars apply to

FREDRIK ENGELHART & CIA. — RUA S. PEDRO N. 9 — RIO DE JANEIRO
ALEX S. GRIEG & CIA. — PRAÇA DA REPUBLICA N. 51 — SANTOS

EXCHANGE

OFFICIAL MARKET RATES

Rio de Janeiro	Buy	Sell	Sell
	1936	1936	1936
	5th. June	5th. June	29th. May
London	57.540	58.347	58.347
New York	11.590	11.810	11.750
Paris	755	780	775
Berlin	3.520	3.700	3.600
Brussels	1.970	1.990	2.000
Buenos Aires	3.240	3.500	3.300
Lisbon	—	530	—
Madrid	1.575	1.600	1.605
Milan	900	960	920
Montevideo	—	5.450	5.450
Zurich	3.740	3.845	3.800
Amsterdam	7.840	8.030	7.950

FREE MARKET RATES

Rio de Janeiro	Buy	Sell	Sell
	1936	1936	1936
	5th. June	5th. June	29th. May
London	87.400	87.500	87.200
New York	17.580	17.420	17.470
Paris	1.150	1.145	1.149
Berlin	—	7.010	7.025
Brussels	—	2.945	2.950
Buenos Aires	4.860	4.850	4.855
Lisbon	—	798	796
Madrid	—	2.390	2.380
Milan	—	—	—
Montevideo	—	8.580	8.650
Zurich	—	5.620	5.645
Amsterdam	—	11.750	11.800

LONDON RATES

London on:—		1936	1936
		5th. June	29th. May
New York	Dollar	5.02¼	4.99%
Paris	Franc	76.25	75.87
Berlin	Mark	12.43	12.41
Amsterdam	Florin	7.34	7.39
Brussels	Belga	29.72	29.55
Berne	Franc	15.54	15.45
Genoa	Escudo	63.73	63.37
Madrid	Lira	110¼	110%
Lisbon	Peseta	36.75	36.62

OSWALDO ARAGÃO DA SILVEIRA

Official Exchange & Share Broker

G. FRASER
E. SAUTTER

RUA DA CANDELARIA, 28-2.º andar

Tel.: 23-1033—1034 23-5630—5995

P. O. Box 210

Telegraphic Address "FRASER"

RIO DE JANEIRO

Casa Bancaria Moneró

AV. RIO BRANCO, 49 — RIO — Phones 23 (0074)

The most important concern for exchange of any currency.

Drafts at the most favourable rates on all countries.

Correspondents throughout the world.

F. MONERÓ & CIA. LTDA.

cables: MONERO Peterson Int. Code 3rd. ed.

MONEY MARKET

DISCOUNT RATES

	1936	1936
	5th. June	29th. May
Bank of England	2%	2%
" France	3½%	3½%
" Italy	5%	5%
" Spain	6%	6%
" Germany	4%	4%
London Market	9/16%	9/16
N/York Market	3/16%	3/16%

RATES FOR NOTES

	Buy	Sell	Sell
	1936	1936	1936
	5th. June	5th. June	29th. May
£ Sterling	89.500	90.500	89.000
\$ U. S. A.	17.600	17.800	17.800
\$ Canadá	17.200	17.600	17.700
Franc (France)	1.150	1.160	1.145
Franc (Belgium)	570	600	600
Franc (Swiss)	5.500	5.700	5.700
Mark (German)	4.000	4.400	4.100
Mark (Finnish)	360	400	400
Crown (C. Slovak)	640	630	630
Crown (Denmark)	3.840	3.970	3.900
Crown (Sweden)	4.430	4.590	4.500
Crown (Norway)	4.330	4.470	4.500
Dinar (Serbia)	—	—	—
Escudo (Portugal)	810	840	820
Florin (Holland)	11.500	11.900	11.300
Lel (Rumania)	—	—	—
Lira (Italy)	1.200	1.230	1.200
Peseta (Spain)	2.160	2.200	2.200
Peso (Argentina)	4.850	4.900	4.800
Peso (Bolivia)	—	—	—
Peso (Chile)	600	670	600
Peso (Paraguay)	—	—	—
Peso (Uruguay)	8.400	8.700	8.500

FREE MARKET OPENING RATES OF BANK OF

LONDON & SOUTH AMERICA LTD.

May 30th.	87.200	17.440
June 1st.	87.200	17.400
" 2nd.	87.400	17.500
" 3rd.	87.600	17.500
" 4th.	87.600	17.400
" 5th.	87.500	17.420

MARKET QUOTATIONS

RIO DE JANEIRO STOCK (OFFERS) AT THE (OFFERS) AT THE RIO STOCK EXCHANGE
 Wednesday, 3rd. June 1936

coupons	747\$	746\$
Ditto c/2 coupons	702\$	706\$
Ditto c/3 coupons	722\$	720\$
Uniformizadas	—	—
Sundry issues 1:000\$ nom.	—	—
Ditto to bearer	766\$	763\$
Ferrovias R a i l - was Bonds	985\$	980\$
Treasury Obligation (1921)	—	985\$
Ditto, 1930	993\$	—
Ditto, 1932	1:015\$	1:012\$
Rio, 100\$ 4%	105\$	103\$
Ditto, 1:000\$ 8%	830\$	840\$
Ditto 500\$ 8%	420\$	406\$
O Minas 1:000\$ 9%	912\$	910\$
Ditto, 7%	750\$	740\$
Ditto, 200\$, 5%	154\$	153\$
Municipal Loan 6% 1906, bearer	145\$	144\$
Ditto, 1904, c 20, bearer	—	412\$
Dito, nom.	380\$	375\$
Ditto, 1917	140\$	139\$
Ditto, 1920, bearer	140\$	139\$
Ditto, dec. 3.204	162\$	161\$
Ditto, 1931, (c/i)	177\$	176\$
Ditto, dec. 2097	164\$	163\$
Ditto, 1909	162\$	160\$
Ditto, 2.093, 8%	—	185\$
Ditto, 1.920	140\$	139\$
Dito, 1.622, 6%	151\$	150\$
Ditto, 1.933, 8%	192\$	190\$
Bello Horizonte	712\$	710\$
Dec. 4.550 7%	—	162\$

Banks:—

Bôa Vista	650\$	580\$
Brasil	387\$	386\$
Portuguez, nom.	100\$	98\$
Ditto, bearer	130\$	120\$
Commercio	210\$	200\$
Mercantil	480\$	470\$
Funcionarios	53\$	52\$
C. R. Minas	300\$	—
Regional	190\$	—

Railways:—

M. S. Jeronymo	98\$	96\$
Paulista	225\$	222\$
Victoria a Minas	—	5\$

Insurance:—

Argos Fluminense	—	2:700\$
Brasil c/ 70\$	—	80\$
Ditto c/40%	—	40\$
Lloyd Atlantico	—	110\$
Guanabara	200\$	110\$
Sagre	400\$	350\$
Confiança	—	250\$
Varegistas	—	150\$
Integridade	—	300\$
Garantia	—	100\$

Textiles:—

Brasil Industrial	495\$	485\$
Corcovado	70\$	62\$
S. Pedro	500\$	400\$
America Fabril	—	210\$
Manufatora	200\$	190\$
Progresso Industrial	265\$	260\$
Nova America	280\$	260\$
Alliança	100\$	—
Confiança	12\$	10\$
Petropolitana	160\$	155\$

THE STOCK MARKET

LONDON

	1936 May 26	1936 June 2	1935 June 3
Brazil Funding 185%	91.0.0	91.0.0	89.10.0
Ditto, 1914 new	70.10.0	70.10.0	67.0.0
Conversion, 1940, 4%	17.5.0	17.10.0	15.10.0
Ditto 1908, 5%	—	—	—
Federal District 5%	24.0.0	24.0.0	26.0.0
Anglo-South Am. Bk. Ltd. ord.	0.4.0	0.4.0	0.6.7½
Brazilian Traction, ord.	12.62	12.50	9.62
S. Paulo Coffee Estate Co. Ltd. 7%	88.0.0	87.15.0	84.10.0
Cables Wirelles Telg. Co. Ltd.	7.6.7½	6.15.0	6.17.0
W'ir. Tel. Co. Ltd. 4% Dec. Stk. Red	104.0.0	104.0.0	104.0.0
Braz. Warrant A'gy & F'nce Co. Ltd. ord.	0.2.0	0.2.0	0.2.0
Rio de Jan. City Imp. Co. Ltd., ord.	0.10.9	0.12.3	0.9.3
Imperial Chemical Ind. Ltd.	1.18.6	1.19.3	1.15.3
S. Paulo Railway	54.10.0	57.10.0	57.0.0
Leopoldina Ry, 6½% Term. Dec. 1933	65.0.0	65.0.0	56.10.0
Rio de Janeiro Flour Mills	1.16.3	1.17.0	1.16.3
Bank of London ? South America	4.7.6	4.7.6	4.5.0
Royal Mail	—	—	—
British War Loan 3½% 1927-47	105.5.0	105.10.0	105.17.6
Consols 2½%	84.10.0	84.15.0	87.10.0

NEW YORK

	May, 29th.	June 5th
American & Foreign Power Co., In	7.25	6.75
American Telephone & Telegraph Co.	164.50	165.00
Armour ? Co. of Illinois "A" Stock	4.87	4.75
Atlantic Refining Co.	27.12	26.62
Brazilian Traction L. & P. Co., Ltd.	—	11.50
Corn Products Refining Co.	77.75	76.50
Electric Bond & Share Co.	19.87	18.62
General Electric Company	37.25	37.37
General Motors Company	62.12	60.75
Internat'l Business Machines Corp.	—	—
International Cement Corp	47.12	47.12
International Harvester Co.	86.00	83.00
Radio Corporation of America	10.87	11.12
Standard Oil Co. of New Jersey	59.25	58.12
Texas Company	33.00	31.75
United States Steel Corp.	60.50	58.50
Westinghouse Electric ? Manuf. Co.	116.50	111.00

BANKS

Chase National Bank, N. Y.	38.90	38.00
National City Bank, N. Y.	34.00	34.00
Royal Bank of Canada	167.00	165.00


Sundry:—

Artefactos de Borracha	210\$	200\$
Docas Santos nom.	217\$	216\$
Ditto, bearer	237\$	—
Mestre Blatgé	205\$	203\$
Docas da Bahia	9\$	2\$
Sul Mineira de Ele-ctricidade	—	207\$
Nickel do Brasil	160\$	—
Hollerith	1:270\$	1:260\$
Luz Stearica	210\$	198\$

Debentures:—

Nova America	—	1.030\$
Docas de Santos	—	212\$
Bellas Artes	214\$	213\$
A. Paulista	191\$	185\$
Edificadora	130\$	125\$
Progresso e Ind. do Brasil	188\$	185\$
Manufatora	220\$	212\$
Mercado Municipal	212\$	210\$
C. Brahma	1:020\$	1:015\$
Luz Stearica	—	170\$
Hotel Palace	280\$	205\$
Docas da Bahia	50\$	33\$

YOU MUST HAVE
 A COPY OF



OBTAINABLE AT
 ROYAL MAIL OFFICES

Price 10\$000

eró
 (0074
 (0174
 of
 atrebo.
 ed.
 1936
 9th. May
 2%
 3½%
 5%
 6%
 4%
 9/16
 3/16%
 Sell
 1935
 h. May
 89.000
 17.800
 17.700
 1.165
 600
 5.700
 4.100
 400
 630
 3.960
 4.170
 4.100
 870
 11.300
 1.200
 2.200
 4.600
 100
 8.700
 K O'

BANK OF BRAZIL

Balance, Sheets as at 30th. May 1936

ASSETS	
Securities rediscounted	487.520:014\$700
General Expenses	18:967\$800
	487.538:982\$500
LIABILITIES	
National Treasury	460.000:000\$000
Bank of Brasil current account	2.176:132\$200
Reserve Fund	9.128:652\$900
Rediscounts	16.234:197\$400
	487.538:982\$500

THE LEOPOLDINA RAILWAY COMPANY

ESTIMATED WEEKLY TRAFIC RECEIPTS

Year	Week ended	Receipts for week			Total from 1st January
		Currency	Exchange	Sterling	
1936	30th May	1.312:000\$	2.74 d.	£ 14.979	£ 369.656
1935	1st June	1 068:000\$	2.66 d.	£ 11.837	£ 348.427
	Incr. X X	244:000\$.08 d.	£ 3.142	£ 21.228
	Decr. X X				

COFFEE PRICES CURRENT

Rio de Janeiro, 5th. June, 1936

COFFEE SERVICE	30	1	2	3	4	5
Rio spot N.º 7	13\$000	13\$000	13\$200	12\$900	12\$800	12\$800
" futures						
June	12\$500	12\$425	12\$350	12\$250	12\$275	12\$325
July	12\$375	12\$350	12\$250	12\$150	12\$150	12\$225
August	11\$950	11\$000	11\$800	11\$675	11\$700	11\$825
September	11\$800	11\$725	11\$675	11\$575	11\$625	11\$725
October	11\$725	11\$650	11\$625	11\$500	11\$575	11\$650
November	11\$600	11\$500	11\$550	11\$450	11\$500	11\$650
Sales	11.000	18.000	15.000	11.000	8.000	7.000
Santos spot N.º 4	16\$000	16\$500	16\$500	16\$500	16\$500	16\$500
" futures						
June	15\$300	15\$200	15\$200	15\$150	15\$100	15\$125
July	15\$275	15\$225	15\$225	15\$200	15\$175	15\$175
August	15\$300	15\$300	15\$300	15\$300	15\$275	15\$275
September	15\$375	15\$350	15\$350	15\$350	15\$275	15\$300
October	15\$350	15\$350	15\$325	15\$325	15\$275	15\$300
November	15\$75	15\$350	15\$350	15\$350	15\$275	15\$350
Sales	2.500	1.500	4.500	5.500	1.000	Nil
New York Rio spot N.º 6	Hol. day	7 ½	7 ½	7 ½	7 ½	7 ½
" " Santos " N.º 7	Hol. day	6 ¾	6 ¾	6 ¾	6 ¾	6 ¾
" " " N.º 4	Hol. day	8 ½	8 ½	8 5/8	8 5/8	8 5/8
" " " N.º 7	Hol. day	7 ¼	7 ¼	7 3/8	7 3/8	7 3/8
" futures						
July	Hol. day	4.63	4.61	4.57	4.56	4.55
September	Hol. day	4.77	4.75	4.71	4.69	4.70
December	Hol. day	4.90	4.88	4.85	4.84	4.83
March	Hol. day	4.97	4.95	4.92	4.91	4.90
Sales	Hol. day	5.000	5.000	5.000	5.000	5.000
Havre futures						
July	Hol. day	121 ¼	121 ¼	121 ¼	122 ¼	119 ¼
September	Hol. day	126 ½	127 ½	127 ½	127 ½	125 ¼
December	Hol. day	131 ¾	132 ¼	132 ¼	133	131
March	Hol. day	136	136 ½	136 ½	137 ½	135 ¼
Sales	Hol. day	12.000	12.000	12.000	12.000	27.000
Hamburg futures						
July	Hol. day	37	37	37	37	37
September	Hol. day	37	37	37	37	37
December	Hol. day	37	37	37	37	37
March	Hol. day	37	37	37	37	37
Sales	Hol. day	Nil	Nil	Nil	Nil	Nil



"Prata Princesa"

(METAL PRATEADO)

UNICO SUBSTITUTO DA PRATA DE LEI

MAPPIN & WEBB

Fabricantes e Importadores • R. do Ouvidor, 100

COFFEE STATISTICS
ENTRIES

Week ending May, 30, 1936 - In bags of 60 kilos

	For the week ended		For the crop
	May, 30 1936	May 23 1936	May, 30 1936
RIO:			
By Central and Leopoldina Ry	23 728	14 361	2,167,045
Warehouses	21 869	23,527	730,962
TOTAL	45,597	37 888	2,898,007
Total Santos	214,883	181,196	9,857,761
Total - Rio & Santos	260,480	219,084	12,755,768

The total entries by different S. Paulo Railways for the crop to May, 30, 1936

	Past Jundiahy Per	Sorocabana and others	Total at S. Paulo	Total at Santos
1935; 1936	4 091,014	5,358 976	9,429,990	9,857,761

COFFEE LOADED (EMBARQUES)

Week ending May, 30, 1936 - In bags of 60 kilos

	During Week ended		For the crop
	May, 30 1936	May, 23 1936	May, 30 1936
Rio	43,519	40,350	2,749,010
Santos	221,491	198 689	9,871,445
Total - Rio & Santos	265,010	239,039	12,620,505

SALES OF COFFEE (DECLARED)

Week ending May, 30, 1936 - In bags of 60 kilos

	During Week ended		For the crop
	May, 30 1936	May, 23 1936	May, 30 1936
Rio	39,192	38,234	1,255,042
Santos	190,000	134,000	5,420,000
Total - Rio & Santos	229,192	172,234	6,675,042

Value of Coffee Cleared for Foreign Ports

Week ending May, 30 1936 - In bags of 60 kilos

PORTS	MAY, 30 1936	MAY, 23 1936	MAY, 30 1936	MAY, 23 1936	CROP TO MAY, 30, 1936	
	Bags	Bags	£	£	Bags	£
Rio	35766	46095	36387	45820	2566508	2391679
Santos	213114	131838	248443	117549	9625077	11084314
TOTAL 1935, 1936	248880	177933	284835	193369	12191585	13475993



MUNSON S.S. LINE

The only North - American Luxurious Liners
— on the "BRAZIL - NEW YORK" route —

21 Thousand Tons each — First and Tourist Class Accommodation — Special prices for TRIANGULAR VOYAGES "RIO-NEW YORK-EUROPE-RIO" or "RIO-EUROPE-NEW YORK-RIO"

SAILINGS FROM RIO :—	To New York		To River Plate	
	Ship	Month	Ship	Month
AMERICA LEGION	June	18	June	19
WESTERN WORLD	July	2	July	3
S. CROSS	July	16		

These modern liners are newly reconditioned and renovated

FARES

FIRST CLASS	TOURIST CLASS
RIO — NEW YORK \$ 250.00	RIO — NEW YORK \$ 135.00
ROUND TRIP \$ 415.00	ROUND TRIP \$ 243.00
ROUND TRIP IN 86 DAYS.. . . . \$ 355.00	

FOR RATES & FURTHER INFORMATION.

The Federal Express Co.

RIO DE JANEIRO - SANTOS - SÃO PAULO

Our Own Stock

IN BAGS OF 60 KILOS

Rio stock on May, 23, 1936	669.541	
Entries during week ended May, 30, 1936	45.597	
	715.138	
Loaded (Embarques) for week ended, May, 30, 1936	43.519	
Local consumption week ended May, 30, 1936	3.500	
Stock at Rio on May, 30, 1936		668.269
Santos stock on May, 23, 1936	2.194.666	
Entries for week ended May, 30, 1936	214.883	
	2.409.549	
Loaded (Embarques) during for week May, 30, 1936	221.491	
Stock at Santos on May, 30, 1936		2.188.252
Stock at Rio and Santos on May, 30, 1936		2.856.521
Stock at Rio and Santos on May, 23, 1936		2.864.207

NOTE — From the Rio stock, 150 bags have been included by D. N. C.
 NOTE — In the Santos stock 194 bags have been included by D. N. C.

COFFEE SAILED

Week ending May, 30, 1936 — In bags of 60 kilos

P. RTS	UNITED STATES	EUROPE & MEDITERRANEAN	C. AST	RIVER PLATE	CAPE	OTHER PORTS	TOTAL FOR WEEK	CROP TO DATE
Rio	1000	20976	3090	3625	10165	—	38856	2670382
Santos	151320	58260	—	3534	—	—	213114	9828482
TOTAL	152320	79236	3090	7159	10165	—	251970	12298864

JOHNSON LINE

Rederiaktiebolaget Nordstjernan Stockholm (Sweden)
 REGULAR SERVICE BY MOTOR VESSELS from SWEDEN, POLAND, BALTIC PORTS and VICE-VERSA

SAILINGS	For the River Plate	For Sweden and Poland
"Santos"	—	17th. June
"Uruguay"	—	26th. June
"BRASIL"	10th. June	10th. July
"Kronpr. Margareta"	24th. June	26th. July
"Pacific"	4th. July	—
"Nordstjernan"	3rd. July	7th. Aug.
"Lima"	16th. July	—
"Argentina"	25th. July	24th. Augu

M/S "SANTOS"
 Expected on the 17th. June, sails for Victoria Sweden & Poland BRASIL

Expected on the 10th. June sails for Santos & B. Aires.
 The Vessels dispose of accommodations for limited number of First-Class Passengers. For further particulars apply to the Agents: — Williams & Co., Pernambuco, P. O. Box 245 Gueudeville & Co., Bahia, P. O. B. 203 Johnson Line Agencies, Santos, P. O. Box 404 Hard, Rand & Co., Victoria, P. O. Box 125 and/or

LUIZ CAMPOS FILHOS & CIA.
 Rua 1º de Março, 117 — Phones: 23-2896 & 23-3337
 RIO DE JANEIRO

HAMBURG - SUEDEMERIKANISCHE DAMPSCHIFFFAHRTS GESELLSCHAFT

Regular service with the known, luxurious, express steamer "Cap Arcona", between Hamburg, Boulogne s./mer, Plymouth, Vigo, Lisbon, Rio de Janeiro, Santos, Montevideo, Buenos Aires and vice-versa.

The s. s. "Cap Arcona" is the fastest ship to North-Europe, performing the voyage from Rio to Lisbon in 9 days, to Plymouth and Boulogne s.m. in 11 days and to Hamburg in 12 days

NEXT SAILINGS FOR EUROPE

"MONTE PASCOAL"	11 June
"CAP ARCONA"	13 "
"ANTONIO DELFINO"	17 "
"GENERAL ARTIGAS"	24 "
"GENERAL SAN MARTIN"	2 July
"LA CORUNA"	10 "

Regular services with modern and full powered cargo steamers between Hamburg, Antwerp, Portugal, Brasil and River Plate Ports.
 For further particulars apply to the agents:

THEODOR WILLE & CIA. LTDA.

RIO DE JANEIRO
 SANTOS VICTORIA S. PAULO
 79, Avenida Rio Branco, 79

COFFEE

Bahia Stock on 29th. May, 1936	39.147
Entries during week ending 5th. June 1936	2.589
Available	41.736

Clearances during week:

To U. S.	—
Europe	9.340
To Elsewhere	3.703
	13.043

Bahia Stock on 5th. June, 1936	28.693
--	--------

SÃO PAULO RAILWAY COMPANY

ESTIMATED WEEKLY TRAFIC RECEIPTS

Year	Week ended	Currency	Exchange	Sterling	Total to date
1935	May 19th.	2,246:648\$220	91\$000 or 2d. 5/8	24,688- 8-10	523,648-16- 5
1936	May 17th.	2,946:000\$000	88\$500 or 2d. 23/32	33,288- 2- 0	611,012- 5- 5
Increase		699:351\$780	—	8,599-13-11	87,363- 9- 0
Decrease			Od. 3/32	—	—

Rio de Janeiro Coffee Manifests

MAY 11th

AFRICA MARU'

"Cape Town"

Norton Megaw & Cia, Ltd	325
Mc. Kinlay S/A	250
Ornstein & Cia	250
Leon Israel Co S/A	125
Sinner S/A	100
Hard, Rand & Cia	100

"Mossel Bay"

Mc. Kinlay S/A	450
Leon Israel Co S/A	275
Norton Megaw & Cia, Ltd	200

"Port Elizabeth"

Norton Megaw & Cia, Ltd	750
Mc. Kinlay S/A	655
Castro Silva & Cia	205
Leon Israel Co. S/A	175
Ornstein & Cia	150

"East London"

Mc. Kinlay S/A	550
Norton Megaw & Cia, Ltd	100
E. G. Fontes & Cia	65
Castro Silva & Cia	50
Ornstein & Cia	25

"Durban"

Norton Megaw & Cia, Ltd	550
-----------------------------------	-----

Ornstein & Cia	275
Castro Silva & Cia	250
Sinner S/A	200
Hard, Rand & Cia	30
Mc. Kinlay S/A	25

"Lourenço Marques"

Castro Silva & Cia	200
Norton Megaw & Cia, Ltd	100
E. G. Fontes & Cia	50
Mc. Kinlay S/A	25
Ornstein & Cia	25

"Beira"

Mc. Kinlay S/A	25
Castro Silva & Cia	25

"Luderitz Bay"

Leon Israel Co. S/A	25
-------------------------------	----

"Walfish Bay"

Leon Israel Co S/A	50
------------------------------	----

Total 6.655

MAY, 12th

SANTAREM

"Montevideo"

Vivacqua Irmãos S/A	700
Castro Silva & Cia	100

"Buenos Ayres"

Castro Silva & Cia	1.400
Theodor Wille & Cia, Ltd	500
Vivacqua Irmãos & Cia	400

A. Jabour & Cia	325
Cia nacional Comercio de Café	100
Ornstein & Cia	100

Total 3.625

MAY, 20th

FLORIDA

"Dakar"

E. G. Fontes & Cia	125
------------------------------	-----

"Marseille"

Cia Nacional Comercio de Café	8.280
Castro Silva & Cia	2.500
Sinner S/A	1.600
Pinto, Lopes & Cia	63

"Tunis"

A. Jabour & Cia	312
Cia Nacional Comercio de	

Café 125

"Bone"

Ornstein & Cia	284
E. G. Fontes & Cia	63

ALEXANDRIA

Theodor Wille & Cia	250
M. G. Ribeiro	125

"Sfax"

Ornstein & Cia	63
--------------------------	----

ALL ABOUT COFFEE

(Second and Revised Edition)
By William H. Ukers, M. A.

Editor, *The Tea and Coffee Trade Journal*; Author, *All About Tea, Coffee Merchandising, Coffee in a Nutshell*

The Fruit of Thirty Years' Experience with the Trade and Study of the Subject.

FEATURES :

Complete Reference Table of All Coffees — A Coffee Chronology of 562 Dates — A Coffee Thesaurus — A Coffee Bibliography Information on the Chemistry and Pharmacology of Coffee, Coffee Cultivation, Preparation, and Marketing — World Production and consumption of Coffee — History of the Coffee Houses of the Old and New Worlds — 1,000 illustrations — Four Pages in color.

Issued in One Volume of 38 chapters, 832 pages, approximately 500,000 words, covering all the important Historical, Technical, Scientific, Commercial, Social and Artistic phases of the subject.

Bound in Buckram — stamped in gold
Price, \$15, postpaid. Cash with Order

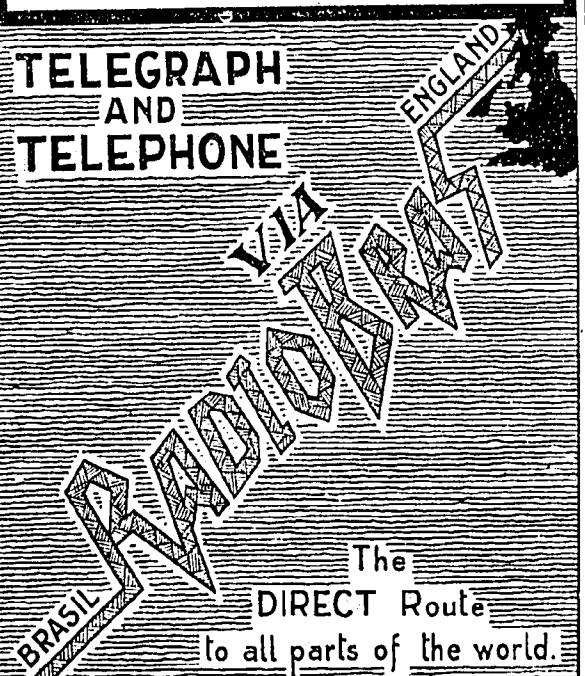
U. S. currency

Published by

THE TEA AND COFFEE TRADE JOURNAL CO.
79 Wall Street, New York

SPEED is ECONOMY

TELEGRAPH AND TELEPHONE



The
DIRECT Route
to all parts of the world.

CIA RADIOTELEGRAPHICA BRASILEIRA

"Beyrouth"	62
Ornstein & Cia	
"Ceuta"	125
Mc. Kinlay S/A	
"Sousse"	126
Theodor Wille & Cia, Ltd	
Sinner /A.	63
"Bougie"	63
E. G. Fontes & Cia	
"Larnaca"	125
Sinner S/A	
Phelippeville	470
E. G. Fontes & Cia	
ALGER	188
A. Jabour & Cia	
Total	14.412
MAY, 22th	
ESPANHA	
"Hamburg"	250
Cia Cafeeira de Minas Geraes	
Sinner S/A	63
Total	313
MAY, 23th	
MERCATOR	
"Helsinki"	900
A. Jabour & Cia	
Cia Nacional Comercio de Cafe	500
E. G. Fontes & Cia	250
"Turku"	225
Cia Nacional Comercio de Cafe	
Sinner S/A	175
Mc. Kinlay S/A	125
A. Jabour & Cia	75
"Viipuri"	200
A. Jabour & Cia	
"Oslo"	225
A. Jabour & Cia	
"Yxpila"	50
A. Jabour & Cia	
Total	2.725
MAY, 23	
WAALHAVEN	
"Antwerp"	875
Marcellino Martins Filho & Cia	
Vivacqua Irmãos S/A	125
Pinheiro Ladeira & cia	125
Wiborg	225
Vivacqua Irmãos S/A	

WILEMAN'S

Brazilian Review

CIRCULATES

in 33 different countries

THE STANDARD PUBLICATION

FOR BRAZILIAN STATISCS

quoted by Government Departments

"Helsinki"	500
Vivacqua Irmãos S/A	
"Turku"	125
Marcellino Martins Filho & Cia	
"Ahus"	100
Marcelino Martins Filho & Cia	
"Gavle"	125
Marcelino Martins Filho & Cia	
Total	2.200
MAY, 23	
WATERLAND	
"Amsterdam"	376
Sinner S/A	
MAY, 24	
BAEPENDY	
"Rosario"	75
Ornstein & Cia	
"Buenos Aires"	1.060
Ornstein & Cia	
Vivacqua Irmãos S/A	1.025
Hadjes & Cia	500
Castro Silva & Cia	400
A. Jabour & Cia	250
Total	3.310
MAY, 25th	
LISTA	
"New Orleans"	750
Ornstein & Cia	
Theodor Wille & Cia, Ltd	250
Total	1.000
MAY, 28th	
EGLANTIER	
"Antwerp"	250
Theodor Wille & Cia, Ltd	
Castro Silva & Cia	250
Pinto Lopes & Cia	225
Norton Megaw & Cia, Ltd	125
Total	850
Total Overseas	35.760

Santos Coffee Manifests

MONTEVIDEO MARU"	
"Houston"	
MAY, 18th	
Hard, Rand & Cia	3.225
Almeida Prado & Cia	2.375
Lima, Nogueira & Cia	1.336
Nioac & Cia, Ltd	1.125
Vidigal, Prado & Cia	1.000
Theodor Wille & Cia, Ltd	375
Exp. Café Brasil, Ltd	250
Cia Prado Chaves	250
"New Orleans"	
Hard, Rand & Cia	2.650
Almeida Prado & Cia	1.500
S. A. Levy	1.250
E. Johnston & Cia, Ltd	975
Junqueira, Meirelles & Cia	650
Luiz Ferreira & Cia	625
Theodor Wille & Cia, Ltd	500
Sampaio Bueno & Cia	500
Cia Leme Ferreira	250
Camargo, Pacheco & Sia Ltd	250
Lima Nogueira & Cia	250
Exp. Rubiac, Ltd	125
Zander & Cia, Ltd	125
"San Pedro"	
Almeida Prado & Cia, Ltd	625
Naumann Pepp & Cia	375
H. La Domus & Cia	50
Total	21.136
MAY, 19th	
"Florida"	
"Maseille"	
Cia Leme Ferreira	1.000
Naumann, Gepp & Cia, Ltd	375
Almeida Prado & Cia	375
Theodor Wille & Cia, Ltd	375
Nioac & Cia Ltd	250
E. Johnston & Cia, Ltd	250
Camargo Pacheco & Cia, Ltd	250
Ribeiro do Valle & Cia	250
Martins, Gregory & Cia, Ltd	125
"Alexandria"	
Hard, Rand & Cia	500
Theodor Wille & Cia, Ltd	375
Naumann, Gepp & Cia, Ltd	125
"Barcelonn"	
Cia Prado Chaves	250
"Tunis"	
Theodor Wille & Cia, Ltd	1.000
"Alger"	
Naumann Gepp & Cia, Ltd	400
Total	4.000
MAY, 19th	
REMO	
"Genoa"	
Exp. Rubiac, Ltd	1.000

Oswaldo Ferreira & Cia . . .	1.000
Cia Leme Ferreira . . .	1.000
Junqueira, Meirelles & Cia . . .	500
S. A Levy . . .	250
Soc. Mogyana Export, Ltd . . .	250
Ribeiro do Valle & Cia . . .	250
Hermann Gaih & Cia . . .	250
Total	10.000

MAY, 20th

SOUTHERN CROSS

"New York"

Cia Paulista de Exportação . . .	2.000
Hard, Rand & Cia . . .	1.750
Martins, Gregory & Cia, Ltd . . .	1.000
Exp. Café Brasil Ltd . . .	500
Theodor Wille & Cia, Ltd . . .	350
Arbuckle & Cia . . .	250
Ramos, Silva & Cia . . .	250
Me Laughlin & Cia . . .	850
Lima Nogueira & Cia . . .	250
Cia Leme Ferreira . . .	250
Zander & Cia, Ltd . . .	250
Ribeiro do Valle & Cia . . .	250
S. A. Levy . . .	250
Ray Deninger & Cia, Ltd . . .	3.000
Total	11.200

MAY, 21th

MERCATOR

"Helsinki"

Theodor Wille & Cia, Ltd . . .	975
Leon Israel Co S/A . . .	150

"Abo"

Martins, Gregory & Cia, Ltd . . .	40
Total	1.065

MAY, 21th

DELALBA

"New Orleans"

Leon Israel Co S/A . . .	6.850
American Coffee Cor. . .	4.000
Cia Leme Ferreira . . .	3.561
Cia Prado Chaves . . .	2.875
Theodor Wille & Cia, Ltd . . .	2.577
E. Johnston & Cia, Ltd . . .	2.081
Junqueira, Meirelles & Cia . . .	1.425
Hard, Rand & Cia . . .	1.250
Ray Deninger & Cia, Ltd . . .	3.750
Oswaldo Ferreira & Cia . . .	800
Lima, Nogueira & Cia . . .	750
Cia Paulista de Exportação . . .	581
Almeida Prado & Cia . . .	2.050
Ramos, Silva & Cia . . .	375
Naumann, Gepp & Cia, Ltd . . .	250
Martins Gregory & Cia, Ltd . . .	1.000
Exp. Rubiac. Ltd . . .	250
W. Gieseler . . .	250
Rebello, Alves & Cia . . .	250
H. La Domus & Cia . . .	225
Arbuckle & Cia . . .	411
Camargo Pacheco & Cia . . .	125
Zander & Cia, Ltd . . .	250
Total	35.936

MAY, 21st.

NORMA

"Bergen"

Theodor Wille & Cia, Ltd . . .	575
--------------------------------	-----

Almeida Prado & Cia . . .	401
J. C. Martins & Cia . . .	200
E. Johnston & Cia, Ltd . . .	150
Cia Leme Ferreira . . .	75

"Copenhagen"

Lima, Nogueira & Cia . . .	263
Barros, Pinto & Cia . . .	250
Martins, Gregory & Cia, Ltd . . .	125
Cia Leme Ferreira . . .	125
E. Johnston & Cia, Ltd . . .	102

"Oslo"

Theodor Wille & Cia . . .	100
Cia Leme Ferreira . . .	100
Junqueira, Meirelles & Cia . . .	50

"Trondhjem"

Cia Leme Ferreira . . .	85
-------------------------	----

Haugesund"

Theodor Wille & Cia, Ltd . . .	63
--------------------------------	----

"Aalesund"

Theodor Wille & Cia, Ltd . . .	50
--------------------------------	----

Total 2.714

MAY, 21th

CASCONY

"Havre"

Cia Leme Ferreira . . .	1.500
Hard, Rand & Cia . . .	1.000
Camargo Pacheco & Cia . . .	500
H. La Domus & Cia . . .	500
Franco, Soares & Cia . . .	500
Raphael Sampaio & Cia . . .	250
Exp. Rubiac, Ltd . . .	250
Total	4.500

MAY, 22nd.

MAY, 23

WATERLAND

"Amsterdam"

Theodor Wille & Cia, Ltd . . .	4.375
Hard, Rand & Cia . . .	2.000
Cia Leme Ferreira . . .	1.850
H. La Domus & Cia . . .	1.375
Almeida Prado & Cia . . .	1.125
Sampaio Bueno & Cia . . .	1.000
Lima, Nogueira & Cia . . .	500
Nossack & Cia . . .	520
Martins, Gregory Cia, Ltd . . .	125
Leno Israel Co S/A . . .	63
Total	12.664

MAY, 23rd.

HAWAII-MARU'

"Buenos Ayres"

Raphael Sampaio & Cia . . .	650
-----------------------------	-----

BELDAGNY

"New York"

American Coffee Corp. . .	5.000
Theodor Wille & Cia, Ltd . . .	3.096
E. Johnston & Cia, Ltd . . .	850
575 Hard, Rand & Cia . . .	850

Junqueira, Meirelles & Cia . . .	825
Total	10.630

MAY, 23rd.

LISTA

"New Orleans"

Luiz Ferreira & Cia . . .	5.025
Cia Leme Ferreira . . .	2.850
Oswaldo Ferreira & Cia . . .	2.250
E. Johnston & Cia, Ltd . . .	2.200
American Coffee Corp . . .	2.000
J. G. Martins & Cia, Ltd . . .	2.000
Paiva Nunes & Cia . . .	975
E. La Domus & Cia . . .	750
Lima Nogueira & Cia . . .	750
Barros, Pinto & Cia . . .	625
Soc. Nacional Export. Ltd . . .	625
Sampaio Bueno & Cia . . .	500
Nioac & Cia . . .	500
Zander & Cia, Ltd . . .	500
Exp. Rubiac, Ltd . . .	500
Franco, Soares & Cia . . .	300
Naumann, Gepp & Cia, Ltd . . .	250
Almeida Prado & Cia . . .	125
Total	22.725

Total Overseas 213.114

VICTORIA COFFEE MANIFESTS

CLEARANCES FOR THE PORT OF VICTORIA FROM MAY, 25th TO

MAY, 31st.

MAY, 25th.

"Ayuruoca"

NEW YORK

Arbuckle & Cia . . .	500
Nolasco & Cia . . .	250
Theodor Wille & Cia, Ltd . . .	250
Total	1.000

MAY, 27th

"Lista"

NEW ORLEANS

Ornstein & Cia . . .	500
Nolasco & Cia . . .	250
Soc. Exp. de Café S/A . . .	500

HOUSTON

Ornstein & Cia . . .	500
Armando Pinto & Cia . . .	250
Total	2.375

MAY 27th.

"Aegina"

DURBAN

Hard, Rand & Cia . . .	250
------------------------	-----

ALGOA BAY

Hard, Rand & Cia . . .	250
------------------------	-----

MOSEL BAY

Hard, Rand & Cia . . .	250
------------------------	-----

LUDERITZ BAY

Hard, Rand & Cia . . .	250
------------------------	-----

8th. June, 1936

CAPE TOWN
Hard, Rand & Cia 475

WALFISH BAY
Hard, Rand & Cia 150

EAST LONDON
Hard, Rand & Cia 150
Total 1,285

MAY, 30th
"Alpherat"

ROTTERDAM
Theodor Wille & Cia 125
Hard, Rand & Cia 100
Total 225

MAY, 31st.
SIQUEIRA CAMPOS

"Havre"
Ornstein & Cia 125

ANTWERP
Arbuckle & Cia 125
Armando Pinto & Cia 125
Total 375

MAY, 31st
"Succia"

HARLSTAD
Armando Pinto & Cia 125
"Stockholm"

Hard, Rand & Cia 375
Oliveira Santo & Cia 125
Armando Pinho & Cia 125

GEFLE
Oliveira Santos & Cia 250
Nolasco & Cia 125
Total 1,125

MAY, 31st
"Capillo"
JACKSONVILLE

Nolasco Cia 125
Jayme Oliveira 250

BALTIMORE
Arbuckle & Cia 2,000
Nolasco & Cia 1,750
Ornstein & Cia 500
Oliveira Santos & Cia, Ltd 500
Cia Nac. de Comm de Café 200
Total 5,375

Meat

MEAT CLEARANCES DURING WEEK
ENDING, MAY, 29th, 1936
(PER DESTINATION)

MAY, 23rd.
"Upwey Grange"
LONDON

Frig. Wilson Chilled beef 200,165
Armour Co Chilled beef 185,063
Armour Co. Frozen offal 42,887

MAY, 24th
"Hawaii Maru"
SINGAPORE

Frig. Anglo Preserved 11,558

MAY, 26th
"Africa Star"
LONDON

Frig. Anglo Chilled beef 198,796

MAY, 27th
"Siqueira Campos"

HAVRE
Frig. Wilson Preserved 42,000
Total 680,469

FRUIT

CLEARANCES DURING WEEK
ENDING 29th May 1936 CONFIRMATION
OF SANTOS FRUIT
FROM SANTOS

BANANAS IN BUNCHES

MAY, 23rd.
"Waterland"
Amsterdam 4,147
"Upwey Grange"
"Africa Star"

London 5,396
London 7,241

MAY, 27th
"Argentina"
Stockholm 2,492

ORANGES IN CASES

MAY, 23rd.
"WATERLAND"
Amsterdam 16,151

"Upwey Grange"
London 16,172

MAY, 25th
"El Uruguayo"
Liverpool 19,955

MAY, 26th
"Canadian Reefer"
Antwerp 6,814
London 3,514
Havre 600
Hook of Holland 11,103
London 47,426

MAY, 27th
"Afric Star"
Stockholm 1,640



FINLAND SOUTH AMERICA LINE

SUOMEN ETELA-AMERIKAN LINJA

FORTNIGHTLY SAILINGS FROM SANTOS, RIO DE JANEIRO AND VICTORIA DIRECT
TO POLAND (GDYNIA), DANZIG & FINLAND.

Next sailings:	From Santos	From RIO	From VICTORIA
S/S "BORE VIII"	June 15	June 17	June 19
"NAVIGATOR"	June 25	June 27	June 29

RIO DE JANEIRO — WILSON, SONS & CO. LTD. — AV. RIO BRANCO, 37 — TEL. 23-1532
AGENTS: SANTOS — FINLAND SOUTH AMERICA LINE — R. 15 NOVEMBRO 183 — TEL. 5-379
VICTORIA — CARL BOLL — CAIXA POSTAL 23.

Gothenburg	2.705
Malmo	200

"Argentina"

GRAPE FRUIT IN CASES

MAY, 25th.

"El Uruguayo"

Liverpool	42
MAY, 26th	

"Canadian Reefer"

Hook of Holland	150
---------------------------	-----

"Afric Star"

London	3.996
------------------	-------

TANGERINES IN CASES

May, 25th

"El Uruguayo"	
Liverpool	66
MAY, 26th	

"Canadian Reefer"

Hook of Holland	714
---------------------------	-----

"Afric Star"

London	804
------------------	-----

LEMONS IN CASES

MAY, 23rd

WATERLAND

Amsterdam	345
---------------------	-----

MAY, 25th

"El Uruguayo"

Liverpool	163
---------------------	-----

MAY, 26th

"Africa Star"

London	254
------------------	-----

FROM S. SEBASTIAO

BANANAS IN BUNCHES

MAY, 26th

"Africa Star"

London	27.595
------------------	--------

GRAPE - FRUIT IN CASES

MAY, 26th

"Afric Star"

London	3.220
------------------	-------

COTTON SUGAR AND RUBBER QUOTATIONS

COTTON SERVICE

Rio de Janeiro, 5th. June, 1936

Liverpool 12.30 P. M.

	30	1	2	3	4	5
Pernambuco Macelo fair spot	Ho'day	Ho'day	6 27	6 32	6 28	Ho iday
São Paulo fair			6 57	6 62	6 58	
American Middling			6 67	6 72	6 68	
American futures July			6 17	6 22	6 18	
October			5 81	5 86	5 83	
January			5 71	5 77	5 73	
March			5 71	5 76	5 73	
New York American Middling Uplands	11.70	11.30	11.80	11.77	11.80	11.80
July	11.59	11 63	11 65	11 62	11 65	11 65
October	10 65	10 82	10 79	10 86	10 95	10 95
January	10 53	10 81	10 77	10 80	10 90	10 90
March	10 52	10 83	10 75	10 78	10 91	10 91

SUGAR SERVICE

New York futures July	2.97	2.85	2.84	2.82	2.82
September	2.83	2.82	2.81	2.79	2.79
December	2.78	2.77	2.77	2.74	2.72
London futures January	2.50	2.57	2.56	2.54	2.53
July	Holiday	4/8 ½	4 8	4/7 ¾	4/7 ¾
August		4/8	4/8	4/7 ¾	4/7 ¾
September		4/8 ½	4/8	4/7 ¾	4/7 ¾
October		4/8 ½	4/8	4/7 ¾	4/7 ¾

RUBBER SERVICE

Upriver fine	17 ½	17 ½	17 ½	17 ½	17 ¾
Smoked Sheets	15 ¾	15 ¾	15 ¾	15 ¾	15 ¾
Market	Quiet	Quiet	Quiet	Quiet	Quiet

FREIGHT MARKET

RIVER PLATE CHARTERS FOR WEEK ENDING JUNE 6th. 1936

Name of Steamer	Where to load	Freight	Destination
ss "MARTHARA" (Br) 7.800 tons, 10% June 8-15	S/L	14/-	Los Angeles
A Steamer, 6.800 tons, prompt	S/L	14/-	Los Angeles

THE COMMERCIAL TELEGRAM BUREAU



Supply Official Reports and Quotations of all the leading American, European, Brazilian and Indian Markets to the Cotton, Coffee, Grain, Produce, Provision, Petroleum and Sugar Trades of Europe and America: also re-transmit Private Despatches by Cable to multiple addresses in Europe and North and South

Subscribers furnished with Intermediate or Closing American Reports at night by special arrangements with London, Liverpool, or Amsterdam offices.

FOR TERMS &c., APPLY TO CHIEF OFFICE:

COMTELBURO, LIMITED

11 TOKENHOUSE YARD, LONDON E. C. 2

(open day and night)

Registered Telegraphic Address: "COMTELBURO" Teleph: London Metropolitan 8244 (4 lines)

LONDON: 30 Mincing Lane, E. C. 3.
LIVERPOOL: 7, Rumbold Str. 1983 Centr. (two).
NEW YORK: 66-70 Beaver Street, Hanover 2-4450
AMSTERDAM: Spulstraat 4-3268Z.
HAVRE: Rue Victor Hugo, 136
ANTWERP: Rue des Douze Mois, 19, 11852
PARA: Avenida Castilhos França, 71, Caixa Postal
CEARA: Rua Major Facundo 680: Caixa Postal 198
PERNAMBUCO: Rua Vis. Itaparica, 207, Caixa 299

BAHIA: Rua Portugal, 16, Caixa 203
VICTORIA: Rua 1º de Março, 46: Sala 8, C. Postal 40
RIO DE JANEIRO: Av. R. Branco, 33-1º, C. 266
SANTOS: Rua Cidade de Toledo, 7, Caixa 243
S. PAULO: Rua 3 de Dezembro, 48, 1º, Caixa 1281
CURITYBA: Av. João Pessoa, 71, 2º and., C. Postal 79
RIO GRANDE: Rua Riachuelo, 199; Caixa Postal 92
PORTO ALEGRE: R. Siqueira Campos 903, C. P. 500
B. AIRES: Bolsa de Comercio, 239, tel. U. T. 3-2340.

THE BRITISH EXPORT GAZETTE

GREAT BRITAIN'S LEADING EXPORT JOURNAL

FOUNDED 1892

MERCHANTS, IMPORTERS, and AGENTS in Brazil who are interested in the Trade of Great Britain should subscribe regularly to this old-established and influential publication. It provides its Subscribers with the most exhaustive and exclusive commercial news service and is the connecting link between British Manufacturers and Merchants in all parts of the world.

The Annual Subscription is 10s. or 25s. for Three Years, which includes unlimited use of its Information and Agency Departments

The British Export Gazette is invaluable to Buyers of British Goods and all who want to represent British firms in Brazil

Head Offices: 76, FINSBURY PAVEMENT, LONDON, E. C. 2.

Subscription Form: To WILEMAN'S BRAZILIAN REVIEW

P. O. BOX 809 — Rio de Janeiro

Please enter my/our subscription to WILEMAN'S BRAZILIAN REVIEW for one Year beginning for which I/we enclose order

TERMS (POST FREE)
IN BRAZIL RS: 100\$000 --- Payable in advance
ELSEWHERE £3.0 0

ADVERTISEMENT RATES
ON REQUEST
SINGLE COPIES RS: 25000

Furness Prince Line



NEW YORK-SOUTH AMERICA

Luxurious accomodation - First class passengers only
RIO - NEW YORK 13 DAYS

EASTERN PRINCE

Will Sail June, 11th.
For Trinidad and New York

SOUTHERN PRINCE

Due From New York June, 12th.
For Santos, Montevideo & Buenos Aires

Round trip rates for limited periods considerably reduced

TRIANGULAR TOURS - NEW YORK - EUROPE - BRAZIL - AT SPECIAL RATES

Holder Brothers & Co. (Brazil) Ltd.

Rua do Commercio, 35 - SANTOS
Tel. 2001 & 3728

Avenida Rio Branco, 63-67, 1st Floor - Rio de Janeiro
Tel. 23-0754 and 23-0588

LAMPORT & HOLT LINE LIMITED.

BRAZIL SERVICE

FROM GLASGOW AND LIVERPOOL to: Bahia, Rio de Janeiro, Santos, Rio Grande do Sul, Pelotas & Porto Alegre. From New York and South Atlantic Ports to Brazil and the River Plate.

SAILINGS	From Glasgow	From Liverpool	From New York	Due Rio	Due Santos
NASMYTH	23rd. May	30th. May	---	20th. June	22nd. June
LASSELL	20th. June	27th. June	---	18th. July	20th. July
BROWNING	18th. July	25th. July	---	15th. August	17th. August

HOMEWARD

SAILINGS

LINNELL	leaves Santos 10th. June, Rio 12th. June for Liverpool
BONHEUR	leaves Santos 13th. June Rio 15th. June for Liverpool
BALFE	leaves Santos 25th. June for Liverpool.

Cargo taken on through Bills of Lading, via Rio de Janeiro, to Aracaju, Victoria, Antonina, Paranaguá, São Francisco and Santa Catharina

All steamers, outwards and homewards, have accomodation available for Saloon Passengers at economic rates.

Santos:
F. S. HAMPSHIRE & Co. Ltd.
Bahia:
F. STEVENSON & Co. Ltd.
Pernambuco:
WILLIAMS & Co.

Apply to:
Lamport & Holt Line Limited
AV. RIO BRANCO, 46-49 and.
Tel. 23-1980
RIO DE JANEIRO

S. Paulo:
F. S. HAMPSHIRE & Co. Ltd.
Buenos Aires:
LAMPORT & HOLT LINE Ltd.
Montevideo:
M. REAL AZUA