

# Wileman's BRAZILIAN REVIEW

A WEEKLY JOURNAL OF TRADE, FINANCE, ECONOMICS AND SHIPPING.

Rua Theophilo Ottoni, 41  
RIO DE JANEIRO

ESTABLISHED 1898

CAIXA POSTAL  
(P. O. Box) 809

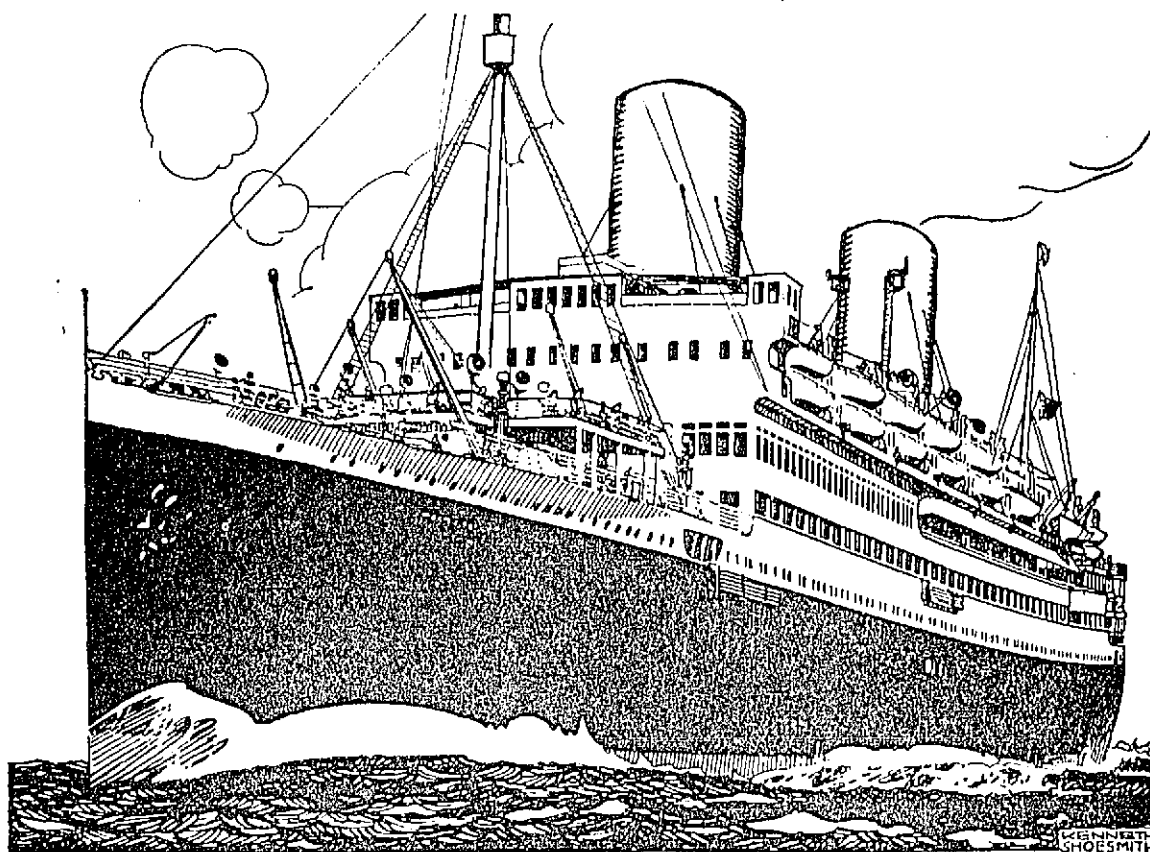
VOL. 27

RIO DE JANEIRO, Monday, 9th. September, 1935

N. 36

2\$000

## ROYAL MAIL



### ACCELERATED SERVICE TO EUROPE

"ASTURIAS" "ALCANTARA"

October 29

October 1

December 10

November 26

REGULAR SAILINGS BY "ARLANZA" - "ALMANZORA"  
AND "HIGHLAND" VESSELS

**SPECIAL TOURIST RETURN TICKETS BY ALL SHIPS  
AT GREATLY REDUCED RATES**

For further information apply to

THE ROYAL MAIL STEAM PACKET COMPANY — Agents: ROYAL MAIL LINES, LIMITED

RIO DE JANEIRO: AVENIDA RIO BRANCO 51/55 — TEL. 23-2161

ALSO AT SANTOS, SÃO PAULO, BAHIA, PERNAMBUCO, RIO GRANDE, ETC.

Announcing the Early Publication  
of a Second and Revised  
Edition of

# All About Coffee

(first published 1922).

By William H. Ukers, M. A.

### FEATURES:

Complete Reference Table of All Coffees — A Coffee Chronology of 500 Dates—A Coffee Thesaurus A Coffee Bibliography of 1350 References— Authoritative Information on the Chemistry and Pharmacology of Coffee. Coffee Cultivation, Preparation, and Marketing—World Production and Consumption of Coffee—History of the Coffee Houses of the Old and New Worlds— Profusely Illustrated. Three pages in colour.

Bound in cloth—Slamped in gold  
Price, \$15. Postpaid. Cash with the order,  
U. S. currency

Published by

**The Tea and Coffee Trade Journal Co.**

79 Wall Street, New York

## COMPANHIA AMERICANA DE SEGUROS

ESTABLISHED IN 1918

### DIRECTORS:

Dr. Erasmo T. de Assumpção  
Dr. Noé Ribeiro  
Dr. Anesio Augusto do Amaral  
Frank C. Toogood



### HEAD OFFICE:

Rua 15 de Novembro, 29-1st floor  
SÃO PAULO

Tels.: 2-1217 e 2-1132

Capital-Fully paid up . . . . . Rs. 2.500:000\$000  
Losses paid . . . . . Rs. 24.287:250\$924  
Reserves . . . . . Rs. 3.448:372\$451

## Fire - Marine - Transit - Plate Glass

### RIO BRANCH:

Rua da Quitanda, n.º 153 — 1st Floor  
P. O. Box N. 959 — Telephone 23-3317

— RIO DE JANEIRO —

## The City of Santos Improvements Company, Limited

CAIXA 4 — SANTOS — ESTADO DE SÃO PAULO

**GAS DEPARTMENT.** Special coke and tar produced by the continuous carbonization process: Also soft pitch for waterproofing purposes, crude benzol and oils for the manufacture of disinfectants.

**WATER DEPARTMENT.** — Distribution on the constant supply system. Special cheap rates for industrial supplies. Ships supplied with water of guaranteed purity, at the rate of 150 tons per hour if required.

**ELECTRICITY DEPARTMENT.** — Installations of any magnitude for Light and Power. Cheap power for longhour consumers. Motor repairs.

**TRAMWAYS DEPARTMENT.** — Seventy kilometres of rapid electric service. Season tickets with non-stop service. Special terms for large parties, parcel delivery; service to all points. Electric transport of goods and building material at cheap rates. Goods from interior should be despatched "Companhia City, Desvlo Saboc".

**MOTOR OMNIBUS SERVICES:** Town Avenues and Beach.

Telegraphic Address "CIDADE" — SANTOS

CAMBIO



TITULOS

Private & Public Titles transacted on all Brazilian markets. Sale of Coffee to the D. N. C., São Paulo & Santos dealers. Editors of the "Revista Financeira Levy", Boletim Comercial, Suplemento Levy (Dailies). Money transactions, Foreign & National on all markets of the world. Agents & Representatives in Rio de Janeiro, Bahia, Porto Alegre, Recife, Pará and all foreign Cities.

### STOCK BROKERS

Rua 15 de Novembro, 59  
SANTOS

CUSTOM HOUSE BROKERAGE OFFICE  
Telegrams: "YVEL"

Rua Alvares Penteado, 20  
SAO PAULO

# Wileman's Brazilian Review

A WEEKLY JOURNAL OF TRADE, FINANCE, ECONOMICS AND SHIPPING

VOL. 27

Monday, 9th. September, 1935

N. 36

## Notes

We give below a summary of the twentyseven recommendations made to the Minister of Foreign Affairs by the Commission delegated to receive the French Commercial Mission to Brazil.

1. *Tobacco*. In view of the excellence of Brazilian Tobacco, it is recommended that France should increase her imports of this commodity from Brazil.
2. *Rubber*. The French markets being able to cope with larger quantities than those at present imported, it is recommended that Brazilian rubber exports to France be increased, with preference, wherever possible, to the types containing more than 20% of impurities.
3. *Timber*. An increase of Brazilian timber imports is recommended, except in the case of woods obtainable from French Colonies.
4. *Cocoa*. In spite of the increased production of Cocoa in French Colonies and the protection on such Brazilian Cocoa imports into France could be increased. In view of this fact, the Commissions recommend that the Import Duties on Cocoa Paste and Ground Cocoa shall not be higher than those on berries or grains.
5. *Fibre*. Taking into consideration the vast reserves of Brazil's various fibres, apart from cotton, and the excellent possibilities thereof in the cloth, rope, paper, and other trades, it is recommended that exports to France be increased.
6. *Minerals*. Brazil possesses mineral deposits not to be found in France or any of her Colonies, and it is recommended that Brazilian Minerals be exported in greater quantities, particularly manganese and chromium.
7. *Guaraná*. In view of the excellent properties of Guaraná as a successor to Kola (which is much favoured as a stimulant in Europe), it is recommended that French imports be increased.
8. *Carnaúba Wax*. The Commissions recommend that the uses of this interesting commodity, which is exclusively Brazilian, be demonstrated to French importers.
9. *Coffee*. Realising that French imports of Brazilian Coffee must increase, the Commissions recommend that:
  - a) measures be taken to make good the damage effected by commercial propaganda to the detriment of the commodity;
  - b) investigations be made with a view to the suppression of discriminative transactions concerning Brazilian coffee;
  - c) a means of putting a stop to the system of denominating "pure" coffees which contain any adulterating mixtures, such as Chicory, barley, corn, figs, nuts, etc., and that such coffees shall be declared as containing the respective proportions of impurities.
10. *Meat*. The Commissions recommend that a means of increasing imports of Brazilian Meat and sub-products be studied, in so far as this does not prejudice French Colonial trade.
11. *Skins and Hides*. Taking into consideration the possibilities of French markets, and the fact that the quality of Brazilian hides and skins is improving, it is recommended that these exports be increased.
12. *Cotton*. It is recommended that French imports of this commodity be increased, in view of the satisfactory consumption in that country.
13. *Oleaginous seeds, Essences, Resins, & Balsams*. In consideration of Brazil's reserves of these products, it is recommended that the exports to France be increased, but with a reserve of protection to French Colonial imports.
14. *Fruit*. It is recommended that French imports of Citrus Fruit, Bananas, and Pineapples from Brazil be increased, by the allowance of a larger quota always with a reserve of protection for French Colonial produce.
15. *Pará (Brazil) Nuts*. Appreciating the qualities of this Nut as a first-class food-stuff, it is recommended that French imports be augmented.
16. *Maté*. It is recommended that exports to France be increased, by adequate propaganda in that country.
17. *Quotas*. The Commissions recommend that the quotas of Brazilian products covered by the Agreement of 14th. May, 1934, for entry into France, which have not yet been fixed, shall be so regulated to serve in the best possible manner the interest of Franco-Brazilian interchange.
18. *French and Brazilian Import Duties*. In order to facilitate Franco-Brazilian exchange, and remedy the inconveniences of tariff restrictions, the Commissions recommend their respective Governments to elect technical committees to study such tariff modifications as may be considered necessary. With this in view, proposals and suggestions will be presented to the Committees by interested parties on both sides, and particularly by the French Chambers of Commerce in Rio de Janeiro and São Paulo.
19. *French Imports into Brazil*. French imports discussed were as follows:
  - 1) Rating of French products composed of various materials.
  - 2) Rating of essences and oils essential to the manufacture of Brazilian perfumes etc.
  - 3) Rating of silk waste.
  - 4) Rating of woollen thread.
  - 5) Rating of pharmaceutical ampules.
  - 6) Rating of perfumery.
  - 7) Rating of Lace goods.
  - 8) Classification of Cigarette Paper.
  - 9) Rating of tubes and pipes.
20. *Books*. In consideration of the fact that an influx of French reading matter would be of advantage, it was decided:
  - 1) That recommendations be made to the French and Brazilian Governments in regard to a reduction in postage on such matters.
  - 2) That the price of such books and magazines be placed within the reach of Brazilians.
  - 3) That facilities of exchange for the acquisition of French publications be obtained from the Brazilian Government.
  - 4) That special rates be quoted by French publishers to Brazilian Universities Scientific Institutes and Cultural Societies etc.
  - 5) That French publishers be recommended to effect sales on a system of "payment on sale" and that the respective Governments, be approached with a view to the facilitation of this method of sale.
21. *Denomination of Origin*. The Commissions agree that the denomination of origin of products from a certain geographical region of France shall enjoy effective legal protection in Brazil.  
(This clause is somewhat ambiguous).
22. *Brandy*. The Commissions recommend that, as soon

## Wileman's Brazilian Review

Established 1898

EDITOR - OSCAR LOUP.

OFFICES: R. THEOPHILO OTTONI, 41, 3.º ANDAR.  
RIO DE JANEIRO

Telephone: 23-1354 - Caixa do Correo (P. O. Box) 809  
Tel. Address: "REVUEW", Riojaneiro.

Redactor Responsavel: Mario da Silva Costa.  
Redacção e Administração: R. Theop. Ottoni, 41-3.º

Subscription (Payable in Advance):--  
Brazil, 100\$000 per annum. Abroad £3 per annum.  
Separate copies 2\$000. Back Numbers 2\$500 per copy

### ADVERTISING RATES ON APPLICATION

#### AGENTS

NEW YORK:—"The Tea and Coffee Trade Journal"  
79, Wall Street.

COPENHAGEN:—"The Scandinavian Shipping  
Gazette", 38 Vestre Boulevard.

NOTICE:— The Editor is not responsible for Correspondence or Articles signed with the writer's name or initials, or with a pseudonym, or that are marked "Communicated". The Editor must likewise not necessarily be held in agreement with the views therein contained or with the mode of expression.

Original articles submitted for publication must be considered, unless otherwise arranged, exclusive to and the sole property of the Review.

In accordance with the Brazilian Press Law, no correspondence or contribution will be published in this Review unless authenticated by the date, name, and address of the contributor, though not necessarily for publication.

Announcements concerning subscribers and friends are inserted free of charge.

## RIO CAPE LINE LTD.

Direct Cargo Service from Rio de Janeiro  
and Santos to

Cape Town, Mossel Bay, Algoa Bay, East  
London, Durban, and Lourenço Marques

THE JAPANESE STEAMER

## ARIZONA MARU

(Under Contract)

Sailing 9th September 1935

Followed by

## ARABIA MARU

Sailing 9th October 1935

For further particulars apply to:  
HOULDER BROTHERS & Co. (BRAZIL) LTD.  
Agents for the Rio Cape Line, Ltd.

AVENIDA RIO BRANCO, 63/67 1st. floor  
Telephones 23-0754 and 23-0588

RIO DE JANEIRO

# MAILS

Sailing dates checked with Steamship Agencies  
on Friday previous to printing.

### TO EUROPE:

FROM	DEP. Rio	VESSEL	Destina- tion	Phone Rio
B. A.	10	H. Chieftain.	London	23-2161
B. A.	11	Amst. Delfino	Hamburg	23-5947
B. A.	24	Almeda Star	London	23-5988
B. A.	24	H. Prince's	London	23-2161
B. A.	25	Neptunia	Trieste	23-5840
B. A.	26	Gen. Osorio	Hamburg	23-5947

### FROM EUROPE:

FROM	Arrives Rio	VESSEL	DEP. Rio	Destina- tion	Phone Rio
Trieste	12	Neptunia	12	B. A.	23-5840
London	16	H. Brigade	16	B. A.	23-2161
S'mpton	20	Alcantara	20	B. A.	23-2161
Hamburg	21	Gen. Artigas	21	B. A.	23-5947
Genoa	24	Augustus	24	B. A.	23-5840
London	29	Avila Stat.	30	B. A.	23-5988
London	30	H. Patrio	30	B. A.	23-2161

### TO U. S. A.

FROM	DEP. Rio	VESSEL	Destination	Phone Rio
B. A.	12	American Legion	New York	23-2000
B. A.	19	North. Princess	New York	23-0754
B. A.	26	West. World	New York	23-2000
B. A.	28	Delmundo	N. Orleans	23-4134

### FROM U. S. A.

FROM	Arrive Rio	VESSEL	DEP. Rio	Destina- tion	Phone Rio
N. Orleans	11	Delsud	11	B. A.	23-4134
New York	13	West. World	13	B. A.	23-2000
New York	20	South. Prince	20	B. A.	23-0754
New York	27	South. Cross	27	B. A.	23-2000

### TO SOUTH AFRICA & JAPAN

FROM	DEP. Rio	VESSEL	Destination	Phone Rio
B. A.	10	Arizona Maru	Yokohama	23-5988

### FROM SOUTH AFRICA & JAPAN

FROM	Arrives Rio	VESSEL	DEP. Rio	Destina- tion	Phone Rio
Kobe	28	Santos Maru	28	B. A.	23-5988

## AIR-MAIL SERVICE

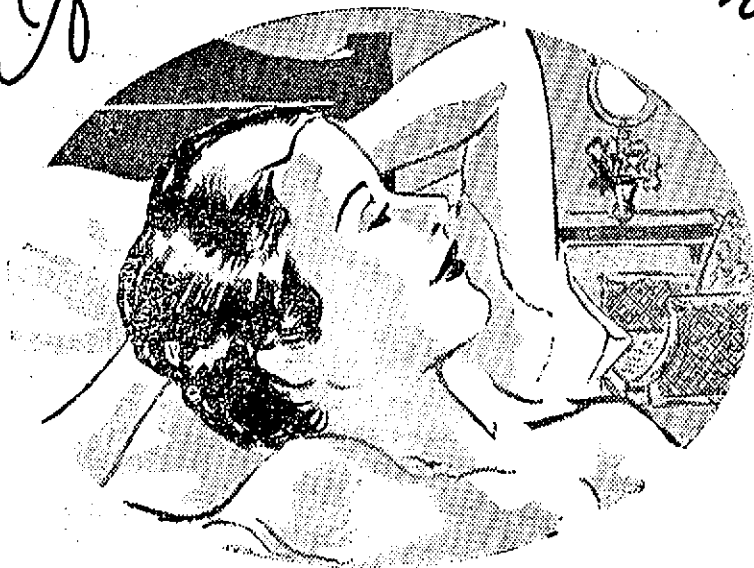
For Closing Hours of Mails, consult Agencies.

FROM	Arrive Rio	SERVICE	DEP. Rio	Destination
Belem	8	Panair	10	Belem
Natal	9	Condor	10	P. Alegre
Europe	10	Air France	10	Chlle
P. Alegre	10	Condor	11	Natal
U. S. A.	11	Panair	12	B. A.
B. A.	12	Condor	12	Europe
—	—	Condor	13	P. Alegre
B. A.	13	Panair	14	U. S. A.
P. Alegre	14	Condor	—	—
Europe	15	Condor	15	B. A.
Chile	15	Air France	15	Europe

If it is Comfort You Want



GO THE BLUE STAR WAY



ON the Blue Star ships the rooms are really roomy. Many are equipped with private baths and showers. All have generous cabin space. And such beds! Wide, roomy, with mattresses made of real coil-springs, the most expensive type money can buy. On beds like these you sleep like a millionaire. On Blue Star beds the tired traveller finds the perfect rest that restores lost energy and renews his zest for living. Blue Star ships are comfortable all over. There is ample deck space for those who like sports and bathing, and space for those who like to read or play cards. Evenings can be quiet, or busy just as you wish. Stewards are understanding, efficient and unobtrusive. Even the children have a delightful playroom of their own thoughtfully located on the upper deck. Lounges are full of spots where a man can find his ease.

For comfort, for rest, or for fun and gaiety, choose a Blue Star liner next time you go to Europe. The nearest Blue Star agent will gladly arrange your accommodation.

To Buenos Aires

To Europe

**BLUE STAR LINE**

Avila Star . . . 30th Sep.  
Andalucia Star 14th Oct.

Almeda Star . . 24th Sep.  
Avila Star . . . 22nd. Oct.

THE LINE OF COMFORT, SERVICE AND COURTESY

as possible, the Department of Health (Brazilian) be approached with a view to facilitating the entry into Brazil of Brandies containing up to 3% of superior alcohol.

23. *Metal Tubes & Pipes.* The Commissions agree that measures shall be taken to increase the use of French tubes and pipes in Brazil, particularly in the Water Services of Municipalities.
24. *Live-Stock.* The Commissions recommend increased introduction into Brazil of French thoroughbred live-stock for breeding purposes.
25. *General.* After a close study of statistics, it is recommended that Brazilian imports of the under-mentioned products be increased, viz:  
Common Soap Sponges, raw linen, cork, olives, vegetable oils, wines and liquors, cement, aluminium, iron and steel, chemical products, perfumes serum and vaccines, electrical apparatus and accessories, locomotives, automotive units, omnibuses, machines and tools, naval constructions, toys, motor-cycles, electric wires and cables, farming machinery and implements, camping cutfits, sports articles, finishing tackle, combustion engines, aviation motors, and jewellery.
26. *Shipping and Freights.* In view of the fact that the question of freights is at present under discussion by the Federal Council of Overseas Trade, (Brazilian), Commissions place entire confidence in the decisions of this body, respectfully accentuating the fact that it would be preferable for the Shipping Companies which maintain freight services between France and Brazil to be members of the Homeward Freight Conference.
27. *Financial Problems.* Considering Brazil's favourable trade balance as justifiable by the fact that she is the producing country, and the importance of the commercial relations between France and Brazil, the following suggestions are put forward as satisfactory:  
1) That the regime of free exchange be maintained in the two countries as a guarantee of the increase in commercial interchange.

2) That no obstacle be raised in either the French or Brazilian markets to the detriment of normal commercial transactions.

For the first time in the history of the country, a foreigner has been received into the Supreme Court of Brazil — this honour was conferred last week on Lord Mac Millan, Supreme Court Judge of Great Britain, while on his visit to Brazil.

It may truthfully be said that Brazil offers more attractions to the silk trade than practically any other country in the world. In the silk producing countries of Europe and Asia, only two harvests, at the best can be obtained each year; throughout Brazil six harvests per annum are the rule, whereas in Amazonas as many as twelve harvests are quite common.

Professor Luciano Pigorini, Director of the Stazione Entomologica Sperimentale de Padova (Italy), in a lecture at the Sociedade Rural Brasileira in São Paulo, summarised the conditions in Brazil as follows:

"As regards the Mulberry, its growth is simple, and its life long; the regular crops and absence of pests on the Brazilian trees are remarkable. As regards the silkworms themselves the climatic conditions are favourable to an unusual degree, cross-breeding presents no difficulties; the problem of several "broods" annually does not arise; the construction of sheds and huts is of the cheapest; the absence of blight and disease is again remarkable." . . . . "There is practically no difficulty presented to the progress of sericulture in Brazil."

A glance at the figures of production and consumption of silk in Brazil will show that, while national production has improved considerably, there is still an enormous quantity of silk imported. The 1934/5 harvest of cocoons was slightly under 700,000 kilos, which, although a tremendous increase over the insignificant 10,000 kilo harvest of 1924/5, represents but a very small fraction of

the country's annual consumption, which is estimated at over 12,000,000 kilos.

The fact that a country with the climatic and physical advantages of Brazil for sericulture imports so great a percentage of her requirements is no less than a piteous waste. Brazil is "cutting her own throat", as it were. If the country could produce even enough for her own immediate necessities, a large national economy would be effected; when this is accomplished — as it surely will be if the present rate of progress is maintained — there will be no lack of markets abroad. The city of Buenos Aires requires some twenty million gold pesos worth of silk annually: the United States of America imported silk valued at well over a million Contos of Reis, last year. Could Brazil but produce a sufficient quantity to meet the export demand, she could under-quote European and Asiatic producers.

The "present rate of progress" has been mentioned above: what has Brazil done to increase her production?

The Ministry of Agriculture has inaugurated at Barbacena (State of Minas Geraes) a Regional Inspectorate of Sericulture; two further Inspectorates are in the process of incorporation under the National Department of Animal Research. A great many of the States of the Union maintain some such Sericultural Institute or Department — there are already such "Stations", as these Institutes are called, in the States of Amazonas, Pará, Minas Geraes, Paraíba, and Espírito Santo. An experimental station is nearing completion in Bahia, and the States of Paraná, Rio Grande do Norte and Alagoas are doing their utmost to introduce silk into their list of products. The State of São Paulo — pioneer again — has enjoyed well deserved success in this industry chiefly through the collaboration of the State Government and private concerns, which policy is much favoured in that State.

It will thus be understood that there is no lack of initiative in this trade, which is, after all comparatively new to Brazil. If the industry does not progress it will not be from lack of a fair trial.

A most important step has been taken recently, in the co-operation between the Ministry of Agriculture and the Departments of Agriculture of the various States. These co-operative measure are becoming ever more popular, and perhaps no industry in Brazil has received such valuable help at birth from these measures as that of silk. With the Regional Inspectorate at Barbacena as the centre, all the States maintaining Sericultural Stations or such organizations co-operate for the protection and improvement of the silk production of the country, establishing by a policy of good-will and patriotism a firm basis for the future of the new industry, in favourable contrast to the State and individual competition which marked the earlier days of coffee and cotton.

At the annual meeting of the City of São Paulo Improvements Company the chairman, Mr. H. Guedella, said that there had been a pleasing increase in sales in the last year, especially in Jardim America.

He announced that negotiations were in progress with the Municipality for the erection of a stadium seating 40,000 people. The chief problem, Mr. Guedella continued, was that of exchange, though he understood that the authorities were doing their utmost to solve it. The report and accounts were adopted.

## WILEMAN'S BRAZILIAN REVIEW

Circulates in 33 different countries

THE STANDARD PUBLICATION FOR BRAZILIAN STATISTICS

quoted by Government Departments  
the world over.

### Brazil's Blocked Commercial Balances

We quote the following from the "News Chronicle" (London), of the 3rd. September: "There is ground for hoping that Brazil will shortly proceed to carry out the agreement of last March, under which blocked commercial balances will be liquidated by a cash payment of one million pounds sterling and an issue of 4 per cent sterling stock".

The "Financial Times" understands that negotiations are proceeding in London in connection with Brazil's provision of £ 1,000,000 to settle small blocked commercial balances. The paper declared that tentative enquiries have been made to ascertain to what extent the London banks will support the operation, but no decision will be taken until the full extent of the debts is known, namely when the Brazilian Claims section of the Board of Trade has received all the returns.

The paper adds that some quarters believe that if Brazil's trade continues its recent improvement, she will be able to provide the million from her own exchange.

The Minister of Finance, approached on the matter, confirmed that operations for a loan are under way.

We acknowledge the following cutting from an old friend:

"The story of the discovery of the value of coffee ashes as a fertiliser savours of Lamb's "Dissertation on Roast Pig."

"A ship's officer, recently returned from Brazil, and not as a rule given to leg pulling, says that when planters decided to burn coffee rather than let the price drop, local farmers were surprised to find that the ashes, blown over their fields from the coffee bonfires, had a stimulating effect on their crops.

"They were paid to carry the ash away and then used it as a fertiliser, but the planters, discovering they were losing in every way, started selling the ash, and now they are getting more for it than they would for coffee."

In the meantime, men in British ships are drinking the very best coffee that the world can grow, for their shipping companies found it was cheaper to buy the finest coffee in Brazil than to buy tea or adulterated coffee anywhere else".

(Extracted from "The Daily Herald").

## GULF SOUTH AMERICA LINE

(SWEDISH AMERICA MEXICO LINE)

Managing Operators:—

PLANT SHIPPING COMPANY INC.  
Whitney Building, New Orleans, U. S. A.

### Sailings for New Orleans

# "Lista"

Sails Santos Sept. 18th. — Rio Sept. 18th.  
Victoria Sept. 22nd.

GENERAL AGENTS FOR BRAZIL

## THE FEDERAL EXPRESS Co.



The hub of shopping activity in the Coffee Metropolis of Brazil — English spoken in all departments — Visitors are specially invited to make use of our British Library and Rest Rooms —

Tea Rooms and Restaurant adjoining

## DEPARTMENTS

DRESSES & SPORTS WEAR  
TAILOR-MADE COATS  
DRESSMAKING-FURS  
MILLINERY

UNDER WEAR  
BABY-LINEN  
CORSETS  
GIRLS DEPT.

SILKS  
MATERIALS  
HOSIERY  
GLOVES, ETC.

BOHEMIAN GOODS  
BAGS & VANITIES  
NEEDLE WORK  
PHOTOGRAPHY

COMPLETE  
OUTFITTING  
FOR MEN & BOYS  
TAILORING  
FOOTWEAR

Beauty Salon

Furniture  
& Carpets

Domestic  
Sections

Travel Bureau

# MAPPIN STORES - S. PAULO

LONDON :—  
14, Henrietta St., W. —

Branch at Rio de Janeiro

Praia de Botafogo, 360  
Furniture & Furnishing only



## LONDON FINANCIAL POSITION

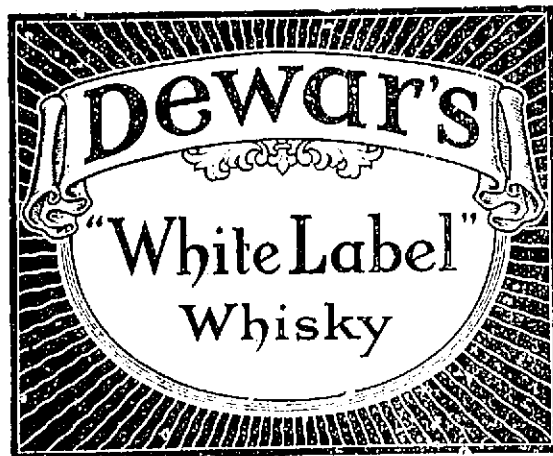
23rd August, 1935.

The Italo-Abyssinian crisis is still the dominant factor in the financial markets, and during the past week it has caused a general and rather severe decline in Stock Exchange securities. At the moment the position looks more hopeful, for at the hastily summoned meeting of the British Cabinet (some members were recalled from holidays) it was decided to uphold the Covenant of the League of Nations. Conceivably this firm attitude may influence Italy, but it seems too much to hope that it will induce that country to modify its declared Abyssinian policy to any material extent. For some time to come there must be a state of uncertainty, and because of this financial activity — the issue of new loans, for example — is likely to be checked. While the political crisis has influenced security values, the London money market has been entirely unperturbed, at least on the surface. Discount rates, however, are largely controlled, and it is certain that the authorities would take measures to check any tendency towards dearer credit. We thus have the Government still borrowing on three months Treasury Bills at about 9/16 per cent, and the great banks can only get from ½ to 1% for their short loans to the market. Control of the foreign exchanges is even more strict, so that, except in the case of forward business, quotations have not reflected the state of ap-

prehension as to the outcome of the political crisis. Conditions in the markets for money and the foreign exchanges, therefore, are largely artificial. The price of gold lately dipped to a shade below £7 per ounce for the first time since December 1 last, owing to the appreciation of sterling in terms of gold currencies caused by the political unsettlement. Large amounts of the metal continue to be dealt with in the London market, the amount having been augmented lately by heavy offerings by India which are connected with serious difficulties of speculators in silver in Bombay. These difficulties have been brought about by the sharp relapse in the metal caused by the reduction in America's buying price, and also the refusal of the U. S. Treasury to buy silver forward. The aggregate shipments of gold from India since September, 1931, when we abandoned the gold standard, now exceed £186,000,000. These shipments, of course, have taken the place of ordinary exports, and have thus greatly assisted the authorities in maintaining the exchange value of the rupee.

Since about August 9 a substantial fall has taken place in Stock Exchange securities, the movement embracing British Government stocks, Foreign Government bonds, English rails and industrials, and gold-mining shares. The extent of the decline in a comparatively short period is rather noteworthy, because the possibilities connected with the dispute between Italy and Abyssinia (the main reason for the market weakness,) were apparent months ago. There was no particular drop in

values, however, until the breakdown of the three-Power conference at Paris (France, Gt. Britain and Italy) called to consider what could be done to avoid an outbreak of hostilities. Soon afterwards, the markets were greatly affected by a statement by the former Prime Minister, Mr. Ramsay MacDonald, that the position is the most serious we have had to face since August, 1914, when the great war started. For a time stock was rather heavily offered, and with little or no buying support the market dealers were compelled to mark prices down sharply. The fall in gilt-edged stocks was the greater because for the time being the great banks are not supporting this section, though it is expected that they will come in again when the outlook is brighter. Markets were vulnerable to any adverse development in European politics because of the great rise in prices of English securities that had been proceeding since this country adopted the necessary measures for dealing with the economic crisis of 1931. The rise since then has been due to exceptionally cheap money, the strengthening of confidence that resulted mainly from the rigid balancing of the Budget, and the unmistakable revival in English trade. The appreciation in gilt-edged securities was inevitable because of the weight of cheap and plentiful money pressing for employment, but in the case of industrials the rise in prices was a reflection of the extent to which the future was discounted — in other words, it anticipated a continued improvement in trade, with its corollary of increased profits and increased dividends. Industrial ordinary shares, therefore, which were quoted on a yield basis of anything from 5 down to 3% or less, naturally suffered in the general malaise. South African goldmining and finance shares were considerably influenced by sales from Johannesburg, where operators had gambled rather heavily, especially in the new and unproved propositions. Markets are the healthier for the recent "shake out", for weak holders have been forced to clear out, and, barring any further unfavourable political developments, there should be some recovery in the near future. A good deal of stock is probably still being carried on borrowed money, the cheapness of which is an inducement to operate in that way, but apparently there is no unhealthy speculation.



## LONDON PRODUCE NOTES

Aug. 23rd. 1935.

**SUGAR:** — The political situation on the Continent, has tended to check business, operators being inclined to await developments. There has been a much better undertone in the sugar markets, although business in refined and raws has shown no material expansion. No change was made in quotations for refined, but up to  $4\frac{2}{3}$   $\frac{3}{4}$ d. per cwt. c. i. f. was paid for foreign 96 per cent raws, with further buyers at that price. The chief feature of interest this week, however, has been the strength of the commodity in America, raw prices showing a rise of 20 points to 2.35 cents. There is a general belief that the Cuban quota for the current year has been filled; for the latest figures issued give the imports of Cuban sugar for the period January/July, as 1,232,088 tons, equal to over 74 per cent of the quota. Of the balance of 425,967 tons, a large quantity was known to be afloat to U. S. at the end of July, while shipments from Cuba for the three weeks July 27 to Aug. 17, was returned at 263,000 tons, the bulk of which was for the U. S. On the New York futures market trading in September on the old contract was suspended, in view of the virtual exhaustion of the Cuban quota, and the liquidation of outstanding contracts was ordered at 2.58 cents.

**RUBBER** — The market for plantation rubber continues quiet. Some liquidation in the East caused a slight set-back at first, but when this was over, the market hardened up to about last week's levels. The estimate made by one of the Malayan delegates on the International Rubber Regulation Committee, that during the year July 1935 to June 1936, stocks should show a reduction of 200,000 tons, is considered on this side to be much too optimistic. For the last half of this year a reduction of about 45,000 tons is looked for by operators on this market, and although the rate of reduction will be accelerated during the first half of next year, consumption will have to increase considerably to reach the estimated reduction of 200,000 tons.

**TEA** — The best quality Indian teas sold well and made full prices, but common and light liquoring kinds were irregular and mostly easier. The same conditions ruled at the Ceylon auctions, light liquoring broken orange pekoes often showed a decline of halfpenny per lb. Export demand, however, was good. Interest at the moment in coffee is at a low ebb, while business in cocoa has been practically negligible.

**JUTE** — There has been a good recovery in prices of raw jute. The Calcutta market has been much more active with a fair amount of speculative buying going on, while the supplies of old crop are reported to be decreasing rapidly. There were buyers, latterly, of old crop, at £18. for September/October shipment, and of new crop at £18.12.6, while new crop Lightnings were quoted £17. per ton value, c. i. f.



**TIMBER** — There was a slightly better demand for mahogany during the past week but no real improvement is expected until the turn of the month. The landings of mahogany during the past month were light, and the quantity did little to augment the total supplies held in the docks. Business in the American hardwood c. i. f. market was rather quiet, but prices on the whole were firm with higher freight rates added. The domestic demand for hardwoods in the United States was reported to be steadily improving.

**FRUIT** — Oranges were in quiet demand; Brazilian, Peras, 126, quoted 8s.; 176, 8s.9d. to 9s.6d.; 216, 8s.9d. to 9s.6d.; seedlings, 150 8s.6d. to 9s.; 200, 8s.6d. to 9s.6d.; 252/288, 8s.6d. to 9s.6d.; Californian, 150/200, 12s.3d. to 14s.6d.; seedlings, 216/324, 12s. to 13s.6d.; South African Navel, boxes, 95, 9s. to 10s.6d.; 112, 9s.3d. to 10s.6d.; 126, 10s. to 11s.6d.; 150, 10s.6d. to 12s.; 200, 10s. to 12s.6d. Bananas; Canary, small, 9s. to 11s., large 11s. 6d. to 13s.; ex large, up to 17s.; per crate. Brazilian 8d. to 9d. per dozen. Grapefruit; California 15s. to 22s.; Mozambique 13s to 19s.6d. Imports from Brazil last week; oranges 53,000 boxes; bananas 49,000 bunches.

**HIDES** — Were about steady with trading more active, and Liebig Colon heavy ox sold at 4½d., and Bovril heavy ox at 5 1/16d. to 5 ½d, all c. i. f. L. W. Dry River Plates were held at 5½d. for B. A. Americanos, 5d. for B. A. Anchos, 5 1/16d. for Cuyabanos, and 6 ½d. for Chubuts. Some D/S Pimentels sold at 4½d. per lb. African dry hides were in better request; unbathed Adis Abebas 12 lb, and up, sold at 5d. and 8/12 lb. quoted at 5¼d. per lb.

## BAHIA COCOA MARKET REPORT

Bahia, August 31st 1935.

### STATISTICS:

	<i>Bags</i>
Receipts from 1st to 29th inst.....	185,407
Shipments do. do.....	150,509
Local stocks on 29th inst.....	105,422

We estimate total receipts in August at about 190/200,000 bags. September receipts will much depend on the weather, but we do not expect them to exceed those of August. Meanwhile, coastwise transport difficulties continue.

**CROP & WEATHER** — The weather during the week under review was normal. Latest news from producing zones reports great damage owing to the heavy rains during the last three months, especially during July and August.

Arrivals until October will be normal, whereas from November onwards they are expected to diminish gradually month by month. The total crop yield, according to what the majority of farmers say, will presumably be equal to the last crop or perhaps less.

**MARKET & PRICES** — We note a good demand from everywhere. South American markets are showing great interest, and will have to buy from Bahia, as they do not cover their requirements elsewhere. Europe, including Germany, is bidding constantly for large quantities without any business of importance resulting as low offers from dealers and prices limited by the German government are prejudicing business in general. Everything, of course, will be a question of time in view of the necessities of consuming markets.



# Furness Prince Line

NEW YORK-SOUTH AMERICA

**LUXURIOUS ACCOMODATION — FIRST CLASS PASSENGERS ONLY**

RIO — NEW YORK 13 DAYS

## NORTHERN PRINCE

WILL SAIL SEPTEMBER 19th,  
FOR TRINDAD AND NEW YORK

## SOUTHERN PRINCE

DUE FROM NEW YORK SEPTEMBER 20th,  
FOR SANTOS, MONTEVIDEO & BUENOS AIRES

**Round trip rates for limited periods considerably reduced.**

TRIANGULAR TOURS — NEW YORK — EUROPE — BRAZIL — AT SPECIAL RATES

## Houlder Brothers & Co. (Brazil) Ltd.

Rua do Commercio, 35 — SANTOS

Avenida Rio Branco, 63-67, 1st Floor — RIO DE JANEIRO

2001 & 3728

Tel. 23-0754 and 23-0588

The demand from North American markets for near and future shipments is also very good, and the position of cocoa can be considered as sound, especially as far as Bahia is concerned, considering that two thirds or more of its total crop output has been sold already.

We quote to-day on Superior:

- c. & f. New York Sept./Nov. shipm. 4 3/4 c. per lb.  
Oct./Dec. shipm. 4.80 c. per lb.  
Nov./Jan. shipm. 4.85 c. per lb.
- c. & f. A'iam opt. Sept./Oct. shipm. sh. 22/3 per 50 ks.  
Nov./Jan. shipm. sh. 22/6 per 50 ks.
- c. i. f. B. Aires Sept./Oct. shipm. m\$38.25 per 100 ks.

EXCHANGE: — Market very unsettled, closing firm to-day at the following rates:

Bank rate . . . . .	£ Rs. 92\$800	\$ Rs. 18\$700
Official . . . . .	£ Rs. 57\$770	\$ Rs. 11\$560
Free . . . . .	£ Rs. 91\$800	\$ Rs. 18\$500

CORREA RIBEIRO & CIA.

## CODFISH

### BRAZILIAN IMPORTS — JUNE, 1935

Origin	Kilos	Value cif
Canada . . . . .	53.132	116.750\$
Great Britain . . . . .	198.981	589.488\$
Norway . . . . .	20.891	61.326\$
Iceland . . . . .	66.410	174.914\$
<b>TOTAL . . . . .</b>	<b>339.414</b>	<b>942.478\$</b>
Equivalent in £ . . . . .		6.260

#### Destination

Manacs . . . . .	1.860	6.802\$
Pará . . . . .	960	3.438\$
Recife . . . . .	1.403	5.221\$
Bahia . . . . .	540	1.912\$
Rio de Janeiro . . . . .	179.751	526.305\$
Santos . . . . .	152.290	390.950\$
Pelotas . . . . .	2.610	7.850\$
<b>TOTAL . . . . .</b>	<b>339.414</b>	<b>942.478\$</b>

### IMPORTS BY ORIGIN — IN KILOS

#### JANUARY TO JUNE, 1934 AND 1935

Origin	1934	1935	1935
Canada . . . . .	209.072	241.723	+ 32.651
Germany . . . . .	20.427	20.300	— 127
Great Britain . . . . .	2.766.337	1.963.753	— 802.584
Iceland . . . . .	—	249.690	+ 249.690
Japan . . . . .	6.583	5.610	— 973
Newfoundland . . . . .	6.304.451	6.660.110	+ 355.659
Norway . . . . .	1.474.423	1.239.643	— 234.780
Portugal . . . . .	840	40.304	+ 39.464
Uruguay . . . . .	—	2.150	+ 2.150
<b>TOTAL . . . . .</b>	<b>10.782.133</b>	<b>10.423.283</b>	<b>+ 358.850</b>

### IMPORTS JANUARY TO JUNE 1931 TO 1934

Years	Kilos	Value cif	££
1931 . . . . .	12.783.847	15.975.640\$	472.420
1932 . . . . .	15.240.255	26.459.362\$	351.557
1933 . . . . .	14.679.777	23.332.336\$	349.434
1934 . . . . .	10.782.133	20.857.430\$	205.948
1935 . . . . .	10.423.283	22.534.651\$	185.391

See N. 34 — Page 9.

## BANK OF BRAZIL

### REDISCOUNT DEPARTMENT

Balance Sheet as at 31st August 1935.

#### ASSETS

Securities rediscounted . . . . .	363.403.123\$300
General Expenses . . . . .	10.014\$400
<b>TOTAL . . . . .</b>	<b>363.413.137\$700</b>

#### LIABILITIES

National Treasury . . . . .	350.000.000\$000
Bank of Brazil current account . . . . .	257.514\$000
Reserve Fund . . . . .	4.622.954\$700
Rediscounts . . . . .	8.532.669\$000
<b>TOTAL . . . . .</b>	<b>363.413.137\$700</b>

## JOHNSON LINE

Rederiaktiebolaget Nordstjernan Stockholm (Sweden)

REGULAR SERVICE BY MOTOR VESSELS from SWEDEN, POLAND, BALTIC PORTS and VICE-VERSA

SAILINGS	For the		For Sweden
	River	Plate and Poland	
"Suecia" . . . . .	—	—	22nd. Sept.
"Santos" . . . . .	—	—	2nd. Oct.
"Brasil" . . . . .	12th. Sept.	—	11th. Oct.
"Pacific" . . . . .	15th. Sept.	—	23rd. Oct.
"Valparaiso" . . . . .	6th. Oct.	—	8th. Nov.
"Kr. Margareta" . . . . .	18th. Oct.	—	21st. Nov.
"San Francisco" . . . . .	29th. Oct.	—	29th. Nov.
"Lima" . . . . .	6th. Nov.	—	11th. Dec.

#### M. V. BRASIL

Expected on the 12th September, sails for SANTOS, MONTEVIDEO and BUENOS AIRES

#### M. V. SUECIA

Expected on the 22nd September, sails for VICTORIA, BAHIA, SWEDEN and POLAND.

The Vessels dispose of accommodations for limited number of First-Class Passengers.

For further particulars apply to the Agents:—

Williams & Co., Pernambuco, P.O. Box 245

Gueudeville & Co., Bahia, P.O. Box 203

Hard, Rand & Co., Victoria, P.O. Box 125.

Johnson Line Agencies, Santos, P.O. Box 404

LUIZ CAMPOS FILHOS & CIA.

Rua 1.ª de Março, 177 — Phones 23-2896 & 23-3337

RIO DE JANEIRO

# CITY OF SÃO PAULO FOR REAL ESTATE INVESTMENT

Reasons Why —

if you are interested in land in São Paulo

You should buy it from

the COMPANHIA CITY:

## TO MANUFACTURERS:

Cheap Power

Easy transport (tramway and railway sidings)

Within the limits of the suburban

zone of the city of São Paulo

Exceptionally well located sites for Industrial purposes in Lapa, Pinheiros, etc.

## TO PRIVATE INVESTORS:

The BEST investment in any country today is LAND

The BEST country in which to buy LAND is BRAZIL

The BEST locality in all Brazil is SÃO PAULO

THE COMPANHIA CITY HAS THE BEST SITES IN SÃO PAULO

The most up-to-date and model residential districts  
such as Jardim America, Pacaembú, Anhangabáhu, etc.

## TO THOSE WISHING TO BUILD:

Immediate financing, independent of total payment of the  
land, and with the greatest facilities for amortization

The population of the CITY OF SÃO PAULO is constantly increasing and São Paulo Lands are constantly increasing in value

Statistics of Population of the City of São Paulo:

1872	31,385
1890	64,934
1900	239,820
1920	579,033
1934	1,060,120

CITY OF SÃO PAULO IMPROVEMENTS & FREEHOLD LAND COMPANY, LIMITED



*The largest organization dealing in real estate and town-planning in South America, established in São Paulo since 1912.*

# 50, LIBERO BADARÓ — SÃO PAULO

Head Office: BROAD STREET PLACE — LONDON, E. C. 2

**MOTOR CARS****BRAZILIAN IMPORTS**

JANUARY TO MAY, 1935.

Marks	Number
Adler	35
Alfa Romeo	1
Austin	3
Auburn	8
Buick	53
Cadillac	2
Chevrolet	986
Chrysler	41
De Soto	3
Dickator	7
D. K. W.	40
Dodge	132
Fiat	9
Ford	2,085
Gramo	2
G. Paige	48
Hansa	1
Horch	1
Hudson	134
Impechelle	11
Infante	13
Lancaster	1
La Salle	8
Lincoln	6
Luckaus	1
Mercedes	1
Nash	1
Oldsmobile	205
Opel	65
Packard	23
Plymouth	47
Pontiac	142

Renault	1
Reo	2
Studebaker	12
Tenaplane	22
Wanderer	7
Willys	2
Unenumerated	1

Imports 5 months, 1935 4,162

**MOTOR TRUCKS****BRAZILIAN IMPORTS**


JANUARY TO MAY, 1935.

Marks Number

Bedford	14
Buldoe	2
Chevrolet	1,431
Commer	22
Dodge	6
Fargo	12
Fiat	3
Ford	2,351
Federal	1
G. M. C.	12
International	312
Liberator	1
Lucemor	2
Mercedes	8
Opel-Blitz	80
Raider	4
Reo	7
Stag	1
Stewart	8
Studebaker	2
Thornycroft	6
Volvo	7
White	16
Unenumerated	5

Imports 5 months, 1935 4,319

YOU MUST HAVE  
A COPY OF



OBTAINABLE AT  
ROYAL MAIL OFFICES

**Price 10\$000**

**FINLAND SOUTH AMERICA LINE****SUOMEN ETELA-AMERIKAN LINJA**

FORTNIGHTLY SAILINGS FROM SANTOS, RIO DE JANEIRO AND VICTORIA DIRECT  
TO POLAND (GDYNIA), DANZIG & FINLAND.

Next sailings:	From SANTOS	From RIO	From VICTORIA
S/S "BORE IX"	Sept. 9	Sept. 11	Sept. 13
S/S "MERCATOR"	Sept. 19	Sept. 21	Sept. 23

RIO DE JANEIRO — WILSON, SONS & Co. LTD. — AV. RIO BRANCO, 37 — Tel. 23-1532

**AGENTS:** SANTOS — FINLAND SOUTH AMERICA LINE — R. 15 NOVEMBRO 183 — TEL. 5.379  
VICTORIA — CARL BOLL — CAIXA POSTAL 23.

**WILEMAN'S BRAZILIAN REVIEW**

THE MIRROR OF BRAZILIAN BUSINESS

Subscription abroad £ 3.0.0d.

BRAZIL 100\$000

Payable in advance with order.

# EXCHANGE

## OFFICIAL MARKET RATES (Deposits)

Rio de Janeiro	1935	
	6th. Sept.	30th. Aug.
London	58\$570	58\$570
New York	11\$830	11\$790
Paris	\$780	\$780
Berlin	4\$740	4\$740
Brussels	1\$990	1\$990
Buenos Aires	3\$430	3\$430
Lisbon	\$530	\$530
Madrid	1\$615	1\$615
Milan	\$965	\$960
Montevideo	5\$350	5\$350
Zurich	3\$850	3\$850

## FREE MARKET RATES (Bank Drafts)

Rio de Janeiro	1935	
	6th. Sept.	30th. Aug.
London	92\$600.	93\$200
New York	18\$720	18\$760
Paris	1\$234	1\$243
Berlin	7\$500	7\$520
Brussels	3\$145	3\$160
Buenos Aires	5\$020	5\$040
Lisbon	\$844	\$850
Madrid	2\$555	2\$575
Milan	1\$545	1\$545
Montevideo	7\$500	7\$570
Zurich	6\$095	6\$125

## LONDON RATES

London on:—		1935	
		6th. Sept.	30th. Aug.
New York	Dollar	4.04½	4.96½
Paris	Franc	75.00	75.12
Berlin	Mark	12.30	12.36
Amsterdam	Florin	7.32	7.33
Brussels	Belga	29.44	29.50
Berne	Franc	15.20	15.22
Genoa	Lira	60.62	60.62
Lisbon	Escudo	110.½	110.½
Madrid	Peseta	36.25	36.25

### Oswaldo Aragão da Silveira

Official Exchange & Share Broker

G. FRASER  
E. SAUTTER  
W. DIXON  
RUA DA CANDELARIA, 28-2º andar  
Tels.: 23-1033—1034 23-5630—5995  
P. O. Box 210  
Telegraphic Address "FRASER"  
RIO DE JANEIRO

## Casa Bancaria Moneró

AV. RIO BRANCO, 49 — RIO — Phones 23 (0074)  
0174

The most important concern for exchange of any currency.

Drafts at the most favourable rates on all countries.

Correspondents throughout the world.

F. MONERÓ & CIA. LTDA.

cables: MONERO Peterson Int. Code 3rd. ed.

## MONEY MARKET

### Discount Rates

	1935	
	6th. Sept.	30th. Aug.
Bank of England	—	2%
" France	—	3%
" Italy	—	4½%
" Spain	—	6%
" Germany	—	4%
London Market	5/8%	3/16%
N/York Market	—	1/8%

## RATES FOR NOTES

	1935	
	6th. Sept.	30th. Aug.
£ Sterling	94.000	94.000
\$ U. S. A.	19.200	19.000
\$ Canada	18.700	18.800
Franc (France)	1.260	1.265
Franc (Belgium)	645	650
Franc (Swiss)	6.100	6.150
Mark (German)	6.900	7.000
Mark (Finnish)	400	400
Crown (Czecho-Slovak.)	820	800
Crown (Denmark)	4.150	4.150
Crown (Norway)	4.680	4.680
Crown (Sweden)	4.800	4.800
Dinar (Serbia)	450	450
Escudo (Portugal)	870	870
Florin (Holland)	12.700	12.700
Lel (Rumania)	130	130
Lira (Italy)	1.370	1.350
Peseta (Spain)	2.630	2.650
Peso (Argentine)	5.050	5.100
Peso (Bolivia)	1.050	1.050
Peso (Chile)	740	750
Peso (Paraguay)	85	85
Peso (Uruguay)	7.600	7.650

## FREE MARKET OPENING RATES OF BANK OF LONDON & SOUTH AMERICA LTD.

	£s	Dollars
Aug. 31st	93\$200	18\$700
Sept. 2nd	92\$800	18\$700
" 3rd	92\$500	18\$650
" 4th	92\$600	18\$670
" 5th	92\$600	18\$720
" 6th	92\$600	18\$720

**MARKET QUOTATIONS  
RIO DE JANEIRO STOCK  
(OFFERS) AT THE  
RIO STOCK EXCHANGE**

**THE STOCK MARKET**

Wednesday 4th Sept. 1935

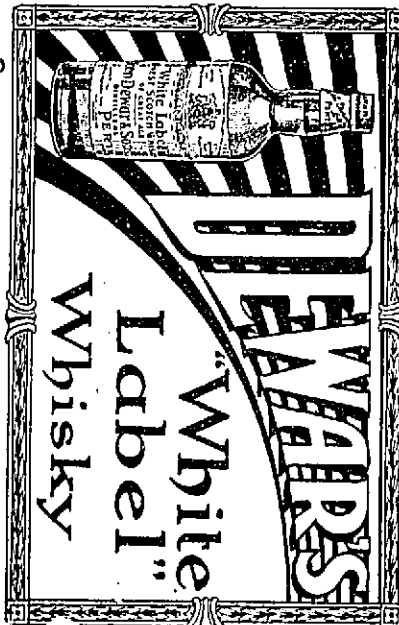
Reajustamento 5% c/ 3 coupons.	785\$	783\$
Uniformizadas.	802\$	778\$
Sundry issues 1:000\$ nom.	777\$	774\$
Ditto to bearer	780\$	777\$
Ferrovias Railway Bonds	990\$	988\$
Treasury Obligation (1921)	—	1:018\$
Ditto (1932)	999\$	996\$
Ditto (1930)	996\$	995\$
Rodovias, bearer	—	700\$
State of Rio 100\$000, bearer	105\$	103\$
Ditto, 500\$ 6%	350\$	—
Rio, 500\$ bearer 8%	440\$	—
Rio, 1:000\$, 8%	890\$	850\$
O. Minas 1:000\$, 9%	985\$	983\$
Minas Geraes, 1:000\$, 7%	—	795\$
Ditto, 5% nom.	625\$	622\$
Ditto, 1:000\$, 5% bearer	625\$	622\$
Ditto, 200\$, 1934	177\$	176\$
Municipal Loan 6% 1906, bearer	151\$	150\$
Ditto, 1904, E 20, bearer	424\$	420\$
Ditto, 1904, nom.	—	—
Ditto, 5%, dec. 1914	—	148\$
Ditto, 1917	146\$	146\$
Ditto, 6%, 1920	146\$	145\$
Ditto, dec. 1933, 7%	—	192\$
Ditto, dec. 1933, 7%	—	171\$
Ditto, 1931 (c/j)	176\$	175\$
Ditto, dec. 1.550	—	171\$
Ditto, dec. 3.264	172\$	171\$
Ditto, dec. 1.948, 7%	172\$	—
Ditto, dec. 2.097	170\$	—
Ditto, dec. 2.339 av. atl.	171\$	—
Ditto, 2.093	191\$	190\$
Ditto, 1.999	172\$	171\$
Ditto, 1.623, 6%	—	135\$
Pelotas, 1:000\$.	800\$	—
Petropolis, 7%	190\$	180\$
Espirito Santo 6%	—	620\$
Ditto, 8%	800\$	790\$
Bello Horizonte	730\$	—
Rio Grande do Sul 500\$, 8%	500\$	450\$
Ditto, 1:000\$, 8%	850\$	—
<b>Banks:—</b>		
Mercantil	—	498\$
Brazil	362\$	381\$
Comercio c/d.	192\$	—
Ditto, nom.	—	—
Bóia Vista	—	585\$
Funcionarios	51\$	50\$
Regional	200\$	170\$
Portuguez, nom.	125\$	—
Ditto, bearer.	135\$	—
<b>Railways:—</b>		
M. M. Jeronymo	115\$	117\$
J. Botânico (Integ.)	—	132\$
Ditto (c/ 60%)	—	79\$
Victoria a Minas.	—	25\$
<b>Insurance:—</b>		
Argos Fluminense	—	2:750\$
Sagres	400\$	350\$

The Stock Market

	1935	1935	1934
<b>London</b>	Aug. 27	Sept. 3	Sept. 3
Brazil Funding 1893 5%	67.00	66.00	97.15.0
Ditto, 1914 new	51.15.0	53.00.0	79.5.0
Conversion, 1910, 4%	10.00	10.00	18.5.0
Ditto 1908, 5%	—	—	—
Federal District 5%	18.00	18.00	34.0.0
Anglo-South Am. Bk. Ltd. ord.	0.66	0.60	0.73
Brazilian Traction, ord.	7.50	7.37	10.62
S. Paulo Coffee Estates Co. Ltd. 7%	80.10.0	80.00.0	95.0.0
Cables Wireless Teleg. Co. Ltd.	7.50	7.50	6.17.3
Western Telegraph Co. Ltd., 4% Dec. Stos Red.	105.00	105.00	101.0.0
Brazilian Warrant Agency & Finance Co. Ltd. ord.	0.16	0.13	0.26
Rio de Jan. City Imp. Co. Ltd., ord.	0.90	0.90	0.11.6
Imperial Chemical Ind. Ltd.	1.14.7½	1.14.9	1.17.0
S. Paulo Railway	38.00	38.00	80.0.0
Leopoldina Ry. 6½% Term. Dec. 1933	45.00	45.00	73.0.0
Rio de Janeiro Flour Mills	1.12.0	1.11.6	1.18.6
Bank of London & South America	4.00	4.00	5.2.6
Royal Mail	—	—	1.0.0
British War Loan 3.½% 1927-47	105.26	105.50	104.15.9
Consols 2.½%	83.50	83.10.0	80.15.0

Confiança	—	220\$
Brazil (70%)	—	42\$
Integridade	205\$	—
Previdente	—	2:600\$
Continental	100\$	—
Garantia	105\$	90\$

bearer	230\$	228\$
Ditto, nom.	225\$	223\$
Docas da Bahia	10\$	7\$
C. Brahma	425\$	420\$
Sul Mineira de Electricidade.	210\$	199\$
Sul America Capitalização	—	310\$
Usinas Sta. Luzia	—	350\$
Palace Hotel.	750\$	—
Seguro Sul America	880\$	—
Cia. Brasileira Imoveis e Construções.	170\$	—
Radio Telefonica Brasileira.	135\$	—
B. Imobiliária de Construção.	160\$	—
A. Borracha	70\$	—
Mestre & Blattgé.	—	300\$
Branca Petroleo	500\$	—
Agric. Juiz de Fora	—	200\$
Caxambu.	60\$	50\$
Agua S. Lourenço	200\$	—
<b>Debentures:—</b>		
Cervejaria Brahma	—	1:020\$
Docas de Santos.	185\$	182\$
Manufatura	214\$	—
Magéence.	—	100\$
Mercado Municipal.	—	206\$
Antartica Paulista.	194\$	—
Industr. Campista.	—	130\$
Usinas Nacoonas	—	205\$
Santa Helena	—	156\$
Federal Fundação	—	180\$
Nova America	—	1:045\$
Fluminense F. Club	70\$	69\$
Tecidos Corcovado	165\$	160\$
Tecidos Alliança.	—	155\$
Edificadora	150\$	—
Hellas Artes	—	225\$
Mayrink Velga	1:020\$	1:006\$
Cotonificio Gavea.	210\$	200\$
Carris Porto Alegre	—	194\$
Jornal do Brasil	—	200\$
Progresso Industrial	190\$	185\$
Luz e Força Santa Cruz.	1:000\$	—
Ola. Tijuca	—	50\$
Docas da Bahia	50\$	20\$



Guanabara	—	100\$
U. dos Proprietarios	—	450\$
Varejista	2:000\$	1:650\$
<b>Textiles:—</b>		
Alliança	150\$	—
Corcovado.	74\$	70\$
America Fabril	225\$	220\$
Brasil Industrial	490\$	400\$
Progresso Industrial	280\$	250\$
Petropolitana	162\$	160\$
Manufatura	240\$	230\$
Nova America	310\$	300\$
Industrial Campista	—	—
Taubaté	700\$	600\$
Confiança	26\$	—
Esperança	—	207\$
<b>Sundry:—</b>		
Holerith.	1:290\$	1:270\$
Docas de Santos,	—	—

# American Republics Line

OPERATED BY

C. H. SPRAGUE & SON, Inc.

BOSTON, Mass.

for the

## United States Shipping Board

Regular Cargo Steamers Service

between

THE ATLANTIC COAST PORTS  
of the United States

BRAZIL and the RIVER PLATE

General Agents for Brazil

## American Steamship Agencies Co. Inc.

Rua 15 de Novembro, 176  
Santos

Rua da Quitanda, 202  
Rio de Janeiro

Cable Address: "Amagencies"

# DELTA LINE

"Floating Bungalows"

Owned and Operated by

## Mississippi Shipping Co. Inc.

RIO to NEW ORLEANS in 18 days  
WITH ONE STOP AT VICTORIA

Passengers — Mail — Freight

NEXT SAILINGS:

Southbound

"DELSUD" Sept. 11, 1935

"DELVALLE" Oct. 9, 1935

Northbound

"DELMUNDO" Sept. 28, 1935

"DELSUD" Oct. 12, 1935

For further particulars apply to

## American Steamship Agencies Co. Inc.

Rua da Quitanda, 202  
RIO DE JANEIRO

Rua 15 de Novembro, 176  
SANTOS

Or at our General Passenger Agents

Serviço Int. de Viagens G. BERNSTORFF

### COFFEE PRICES CURRENT

RIO DE JANEIRO, 6th September, 1935.

COFFEE SERVICE	31	2	3	4	5	6
Rio spot N. 7	11\$300	11\$300	11\$300	11\$300	11\$300	11\$400
Rio futures						
September	11\$250	11\$075	11\$000	11\$125	11\$075	11\$150
October	11\$375	11\$300	11\$225	11\$275	11\$275	11\$325
November	11\$450	11\$350	11\$300	11\$400	11\$325	11\$450
December	11\$475	11\$375	11\$325	11\$400	11\$325	11\$475
January	11\$500	11\$375	11\$350	11\$425	11\$350	11\$450
February	11\$500	11\$375	11\$300	11\$425	11\$350	11\$425
Sales	3.500	2.000	7.000	1.500	4.500	3.000
Santos spot N. 4	16\$000	16\$000	16\$000	16\$100	16\$300	16\$300
Santos futures						
September	15\$525	15\$600	15\$400	15\$350	15\$350	15\$500
October	15\$500	15\$500	15\$425	15\$425	15\$425	15\$500
November	15\$525	15\$525	15\$450	15\$500	15\$550	15\$550
December	15\$525	15\$575	15\$450	15\$500	15\$600	15\$700
January	15\$450	15\$450	15\$275	15\$275	15\$450	15\$575
February	15\$375	15\$400	15\$225	15\$300	15\$425	15\$525
Sales	3.500	10.000	4.500	2.500	2.500	6.000
New York Rio spot N. 6	Holiday	Holiday	7 1/4	7 1/4	7 1/4	7 1/2
New York Rio " N. 7	"	"	6 1/2	6 1/2	6 1/2	6 3/4
" Santos " N. 4	"	"	8 1/4	8 1/4	8 1/4	8 3/4
" Santos " N. 7	"	"	7 3/4	7 3/4	7 3/4	7 7/8
" futures September	"	"	4.67	4.68	4.63	4.63
December	"	"	4.88	4.91	4.86	4.86
March	"	"	5.06	5.10	5.04	5.04
May	"	"	5.17	5.23	5.17	5.16
Sales	"	"	5.000	5.000	5.000	5.000
Hamburg futures September	106 3/4	105 3/4	106	106 3/4	107 1/2	106 3/4
December	110 1/2	110 1/4	111	110	110 1/4	110
March	113	113	113 3/4	113	113 1/4	113 1/4
May	113 1/2	113 1/2	114 1/4	113 3/4	113 3/4	113 1/2
Sales	1.000	4.000	2.000	2.000	2.000	1.000
Havre futures September	32 1/2	32 1/2	32 1/2	32 1/2	35	34 1/2
December	32	32	32	32	32 1/2	33
March	32	32	32	32	32 1/2	33
May	32	32	32	32	32 1/2	33
Sales	NIL	NIL	NIL	NIL	NIL	NIL

## SHIPMENT OF COFFEE DURING JULY, 1935

By ports of Shipment and destination

IN BAGS OF 60 KILOS

EUROPE:	Rio	Santos	Victoria	Paranaquá	Bahia	Recife	A. dos Reis	Total
France	32,404	72,929	2,762	3,104	9,380	1,063	—	121,642
Germany	5,441	101,090	5,877	—	250	—	—	112,658
Italy	19,026	19,574	2,633	—	1,421	—	—	42,654
Holland	2,663	32,669	2,811	—	—	—	—	38,143
Sweden	3,563	27,414	4,025	—	—	—	—	35,002
Belgium	3,505	19,917	1,068	—	487	—	—	24,977
Roumania	24,028	—	—	—	—	—	—	24,028
Finland	16,584	838	275	—	—	—	—	17,697
Spain	5,354	8,422	—	—	463	46	—	14,285
Denmark	2,184	8,964	—	—	—	—	—	11,148
Yugoslavia	3,444	—	877	—	—	—	—	4,321
Portugal	3,354	—	—	—	—	—	—	3,354
Greece	3,001	—	—	—	—	—	—	3,001
Norway	1,452	1,514	25	—	—	—	—	2,991
Polland	313	626	1,598	—	—	—	—	2,537
Danzig	752	125	376	—	—	—	—	1,253
Malta	627	—	626	—	—	—	—	1,253
Switzerland	—	1,101	—	—	—	—	—	1,101
Island	250	—	—	—	—	—	—	250
Gibraltar	—	187	—	—	—	—	—	187
U. Kingdom	—	4	—	—	—	—	—	4
<b>TOTAL</b>	<b>127,945</b>	<b>295,374</b>	<b>22,953</b>	<b>3,104</b>	<b>12,001</b>	<b>1,109</b>	<b>—</b>	<b>462,486</b>
<b>NORTH AMERICA:</b>								
United States of America	57,102	563,308	67,192	—	—	—	10,523	698,120
Canada	250	3,445	—	—	—	—	—	3,695
<b>TOTAL</b>	<b>57,352</b>	<b>566,748</b>	<b>67,192</b>	<b>—</b>	<b>—</b>	<b>—</b>	<b>10,523</b>	<b>701,815</b>
<b>SOUTH AMERICA</b>								
Argentine	26,557	10,327	330	—	500	—	—	37,714
Chile	5,634	—	—	—	—	—	—	5,634
Uruguay	1,400	—	—	—	—	—	—	1,400
<b>TOTAL</b>	<b>33,591</b>	<b>10,327</b>	<b>330</b>	<b>—</b>	<b>500</b>	<b>—</b>	<b>—</b>	<b>44,748</b>
<b>AFRICA</b>								
Algiers	14,138	500	1,588	—	—	—	—	16,226
Union South Africa	11,800	25	—	—	—	—	—	11,825
Egypt	4,356	2,750	—	—	—	—	—	7,106
Morocco	738	—	501	—	—	125	—	1,364
Tunis	440	—	—	—	—	—	—	440
Mozambique	1,165	—	—	—	—	—	—	1,165
British South Africa	525	—	—	—	—	—	—	525
Tripoli	313	126	—	—	—	—	—	439
Senegal	—	—	—	—	63	—	—	63
Canary	1,780	100	—	—	—	—	—	1,880
<b>TOTAL</b>	<b>35,255</b>	<b>3,501</b>	<b>2,089</b>	<b>—</b>	<b>63</b>	<b>125</b>	<b>—</b>	<b>41,033</b>
<b>ASIA</b>								
Palestine	687	—	—	—	—	—	—	687
Syria	218	—	—	—	—	—	—	218
Rhodes	188	—	—	—	—	—	—	188
Chypre	156	—	—	—	—	—	—	156
Turkey	95	—	—	—	—	—	—	95
<b>TOTAL</b>	<b>1,344</b>	<b>—</b>	<b>—</b>	<b>—</b>	<b>—</b>	<b>—</b>	<b>—</b>	<b>1,344</b>
Consumption on board	—	247	—	—	—	—	—	247
Total abroad	255,487	876,197	92,564	3,104	12,564	1,234	10,523	1,251,673
Coastwise	11,369	316	16,585	300	5,881	1,893	—	36,344
<b>GRAND TOTAL</b>	<b>266,856</b>	<b>876,513</b>	<b>109,149</b>	<b>3,404</b>	<b>18,445</b>	<b>3,127</b>	<b>10,523</b>	<b>1,288,017</b>



**SÃO PAULO RAILWAY COMPANY**  
Estimated Weekly Traffic Receipts

YEAR	Week ended	RECEIPTS OF WEEK			TOTAL TO DATE
		Currency	Exchange	Sterling	
1934	Aug. 27th.	1,590,568\$400	648,512 or 46,183	26,702-0-2	1,048,305-17-4
1935	Aug. 25th.	2,070,000\$000	508,400 or 46,764	35,443-7-6	1,208,225-7-5
Increase .....		479,431\$600	04,564	8,651-7-4	110,420-10-1
Decrease .....					

**THE LEOPOLDINA RAILWAY COMPANY**  
Estimated Weekly Traffic Receipts

YEAR	WEEK ENDED	RECEIPTS FOR WEEK			TOTAL FROM 1ST JANUARY
		Currency	Exchange	Sterling	
1935	1st. August	1,643,000\$	2,58	£ 19,812	£ 501,043
1934	1st. Sept.	2,018,000\$	3,52	£ 20,507	£ 159,781
Increase .....	X X	S 175,000\$	.14	£ 0,765	£ 102,061
Decrease .....	X X				

**COFFEE QUOTATIONS**

RIO DE JANEIRO 3rd SEPTEMBER, 1935

	Rio		New York			
	Santos	Rio	Santos	Rio	Santos	
Spot:	7s	4s	7s	4s	7s	
Aug. 28th 1935	11\$400	15\$900	6. 1/2c	8. 0c	7. 1/2c	
Sept. 2nd 1935	11\$300	16\$000	6. 1/2c	8. 1/4c	7. 3/4c	
Rise or fall	-\$100	+\$100	-	+0. 1/4c	+0. 1/4c	
Options	Rio Contract A		Santos Contract A			
	Sept.	Dec.	Mar.	Sept.	Dec.	Mar.
Aug. 26-1935	4.91c	5.05c	5.16c	7.67c	7.81c	7.89c
Sept. 2-1935	4.67c	4.88c	5.05c	7.59c	7.78c	7.89c
Rise or fall	-0.24c	-0.17c	-0.11c	-0.08c	-0.03c	-

NOTE: —

New York Quotations given are those of 3rd Sept. Monday, 2nd being a holiday.

**COFFEE STATISTICS**  
ENTRIES

Week ending Aug., 31, 1935 — In bags of 60 kilos

	FOR THE WEEK ENDED		FOR THE CROP
	Aug. 31 1935	Aug. 24 1935	Aug. 31 1935
RIO:			
By Central and Leopoldina R'y	53,231	53,371	551,306
Warehouses	10,823	13,437	84,385
TOTAL	64,054	66,808	635,691
Total - Santos	197,799	198,857	1,735,349
TOTAL Rio & Santos	261,853	265,665	2,369,040



**MUNSON S.S. LINE**

The only North - American Luxurious Liners  
— on the "BRAZIL - NEW YORK" route —

21 Thousand Tons each — First and Tourist Class Accommodation — Special prices for TRIANGULAR VOYAGES "RIO-NEW YORK-EUROPE-RIO" or "RIO-EUROPE-NEW YORK-RIO"

SAILINGS FROM RIO:—	To New York		To River Plate
	AMERICAN LEGION	Sept. . . . 12	Sept. . . . 13
WESTERN WORLD	Sept. . . . 26	Sept. . . . 27	
SOUTHERN CROSS	Oct. . . . 10		

These modern liners are newly reconditioned and renovated

FIRST CLASS	FARES	TOURIST CLASS	
RIO — NEW YORK	\$ 250.00	RIO — NEW YORK	\$ 135.00
ROUND TRIP	\$ 415.00	ROUND TRIP	\$ 243.00
ROUND TRIP IN 86 DAYS	\$ 355.00		

FOR RATES & FURTHER INFORMATION

The Federal Express Co.

RIO DE JANEIRO — SANTOS — SÃO PAULO

**COFFEE LOADED (EMBARQUES)**

Week ending Aug. 31, 1935 — In bags of 60 kilos

	DURING WEEK ENDED		FOR THE CROP
	Aug. 31 1935	Aug. 24 1935	Aug. 31 1935
	Rio Santos	51,964	69,008
Total-Rio & Santos	289,540	246,382	1,803,388
	341,504	315,390	2,346,816

**SALES OF COFFEE (DECLARED)**

Week ending Aug. 31, 1935 — In bags of 60 kilos

	DURING WEEK ENDED		FOR THE CROP
	Aug. 31 1935	Aug. 24 1935	Aug. 31 1935
	Rio Santos	25,829	26,072
TOTAL Rio & Santos	178,000	75,000	807,000
	203,829	101,072	1,128,969

**VALUE OF COFFEE CLEARED FOR FOREIGN PORTS**

Week ending Aug. 31, 1935 — In bags of 60 kilos

PORTS	Aug. 31 1935	Aug. 24 1935	Aug. 31 1935	Aug. 24 1935	CROP TO Aug. 31, 1935	
	Bags	Bags	£	£	Bags	£
Rio Santos	676,642	27,115	62,465	25,286	469,906	433,084
Total 1935/1936	195,517	171,952	217,931	189,627	1,462,916	1,629,332
	203,150	199,067	280,391	214,913	1,932,822	2,062,417

**COFFEE SAILED**

Week ending Aug. 31, 1935 — In bags of 60 kilos

PORTS	United States	Europe & Mediterranean	Coast	River-Plate	Cape	Others ports	TOTAL FOR WEEK	CROP TO DATE
Rio Santos	7,725	51,005	4,018	8,656	—	—	71,605	1,196,216
TOTAL	169,240	24,351	156	1,986	—	—	195,649	1,408,489
	176,006	75,359	4,160	10,941	—	—	207,326	1,350,001

**OUR OWN STOCK**

In bags of 60 kilos

RIO STOCK on Aug. 24, 1935	723,173
Entries during week ended Aug. 31, 1935	64,054
Loaded (Embarques) for week ended Aug. 31, 1935	51,964
Local consumption week ended Aug. 31, 1935	3,500
STOCK AT RIO on Aug. 31, 1935	731,913
SANTOS STOCK on Aug. 24, 1935	2,135,671
Entries for week ended Aug. 31, 1935	197,799
Loaded (Embarques) during week ended Aug. 31, 1935	289,540
STOCK AT SANTOS on Aug. 31, 1935	2,043,930
STOCK AT RIO AND SANTOS on Aug. 31, 1935	2,775,843
STOCK AT RIO AND SANTOS on Aug. 24, 1935	2,858,844

NOTE — In the stock of Rio have been included 150 bags by D.N.C.

**DEN NORSKE SYD-AMERIKA LINJE**

(The Norwegian South America Line)

Regular Service to Denmark, Finland, Norway, Baltic, River Plate & vice-versa with 8 fast going

MODERN DIESEL MOTOR LINERS



**NEXT SAILINGS**

FOR RIVER PLATE

m/s "BORGLAND" Sept. 16th

FOR FINLAND, DENMARK, NORWAY & BALTIC

m/s "COMETA" Sept. 24th

The vessels dispose of accommodation for a limited number of 1st. class passengers for Scandinavia and also for London & Dieppe with transhipment in Tenerife.

For further particulars apply to

FREDRIK ENGELHART & CIA — RUA S. PEDRO N. 9 — RIO-JANEIRO  
ALEX. S. GRIEG & CIA. — PRAÇA DA REPUBLICA, 51 — SANTOS

**COFFEE EXPORTED FROM BRAZIL  
DURING AUGUST 1935**

IN BAGS OF 60 KILOS

	Abroad	Coastwise	Total
Santos	871,274	356	871,630
Rio de Janeiro	269,650	13,029	282,679
Victoria	87,340	24,394	111,734
Bahia	11,018	7,692	18,710
Paranaguá	7,225	—	7,225
Angra dos Reis	5,560	—	5,560
Recife	1,562	170	1,732
<b>TOTAL</b>	<b>1,253,629</b>	<b>46,241</b>	<b>1,299,870</b>

**STOCK OF DISPOSABLE COFFEE AT THE  
DIFFERENT BRAZILIAN PORTS ON**

31st AUGUST 1935

IN BAGS OF 60 KILOS

Santos	2,091,971
Rio de Janeiro	727,352
Victoria	249,094
Bahia	55,579
Paranaguá	76,285
Angra dos Reis	24,331
Recife	23,212
<b>TOTAL</b>	<b>3,247,824</b>

**SAO PAULO RAILWAY**

**THE SAFE WAY FROM SANTOS  
TO THE INTERIOR**

FREQUENT — RAPID — ECONOMIC  
PASSENGER

GOODS  
PARCELS

SERVICES

**SPECIAL FACILITIES FOR TOURISTS**

Door to Door Collections

and Deliveries of Luggage, Parcels

and Merchandise

INFORMATION:—

**S.P.R. Estação da Luz Caixa "C"**

**SÃO PAULO**

**MANIFESTS OF COFFEE  
RIO DE JANEIRO**

AUG. 17

Destination	Manifests
<b>"Delfshaven"</b>	
<b>HAVRE</b>	
A. Jabour & Cia.	813
Ornstein & Cia.	537
Cla. Cafeteira de M. Geraes	250
Marcellino Martins F. & C.	175
<b>MARSEILLE</b>	
Mc. Kinlay S/A	2,000
<b>DUNKERQUE</b>	
Ornstein & Cia.	250
<b>ANTWERP</b>	
Ornstein & Cia.	1,000
Marcellino Martins F. & C.	750
Pinheiro, Ladeira & Cia.	316
Leon Israel Co. S/A	250
A. Jabour & Cia.	187
Mc. Kinlay S/A	125
<b>AMSTERDAM</b>	
Marcellino Martins F. & C.	63
<b>BILBAO</b>	
Leon Israel Co. S/A	60
<b>MELILLA</b>	
Ornstein & Cia.	63
<b>HAMBURG</b>	
Mc. Kinlay S/A	500
<b>OSLO</b>	
Ornstein & Cia.	100
<b>TURKU</b>	
Vivacqua Irmãos S/A	125
Mc. Kinlay S/A	75

**KOTKA**

A. Jabour & Cia.	800
Vivacqua Irmãos S/A	200
Mc. Kinlay S/A	75
<b>WIIPURI</b>	
A. Jabour & Cia.	750
Mc. Kinlay S/A	325
Vivacqua Irmãos S/A	265
<b>HELSINKI</b>	
Mc. Kinlay S/A	400
A. Jabour & Cia.	375
<b>OULU</b>	
A. Jabour & Cia.	75
<b>RAUMO</b>	
Marcellino Martins F. & C.	75
<b>KEMI</b>	
A. Jabour & Cia.	25
<b>TONSBERG</b>	
Mc. Kinlay S/A	63
<b>MALTA</b>	
Ornstein & Cia.	937
<b>PORT SAID</b>	
Ornstein & Cia.	125
<b>PIREUS</b>	
Vivacqua Irmãos S/A	750
<b>SALONICA</b>	
Vivacqua Irmãos S/A	250
<b>BEYROUTH</b>	
Ornstein & Cia.	125
Mc. Kinlay S/A	125
<b>CONSTANZA</b>	
Mc. Kinlay S/A	125
<b>Total</b>	<b>13,504</b>

AUG. 18

<b>"Mar Blanco"</b>	
<b>BUENOS AIRES</b>	
Vivacqua Irmãos S/A	1,800
Ornstein & Cia.	550
<b>ROSARIO DE SANTA FE</b>	
Ornstein & Cia.	500
<b>Total</b>	<b>2,850</b>

AUG. 20

<b>"Campana"</b>	
<b>DAKAR</b>	
E. G. Fontes & Cia.	125
<b>ALICANTE</b>	
Pinho, Lopes & Cia.	117
<b>MARSEILLE</b>	
Theodor Wille & Cia. Ltd.	5,925
Sinner S/A	2,434
Mc. Kinlay S/A	2,000
Cia. Nac. Comm. de Café	188
<b>TUNIS</b>	
A. Jabour & Cia.	282
Theodor Wille & Cia. Ltd.	125
<b>PHILIPPEVILLE</b>	
E. G. Fontes & Cia.	63
A. Jabour & Cia.	63
Vivacqua Irmãos S/A	62
<b>BONE</b>	
Ornstein & Cia.	180
E. G. Fontes & Cia.	126
Vivacqua Irmãos S/A	63
<b>ALEXANDRIA</b>	
Sinner S/A	565
Ornstein & Cia.	437
Theodor Wille & Cia.	188

Pinto, Lopes & Cia	126
PORT SAID	
Sinner S/A	125
HAIFA	
Sinner S/A	125
MYTILENE	
Sinner S/A	600
ALEXANDRETTA	
Sinner S/A	63
SUEZ	
Ornstein & Cia.	125
PATRAS	
A. Jabour & Cia.	500
VOLO	
Sinner S/A	200
Theodor Wille & Cia. Ltd.	125
PIREUS	
Sinner S/A	3,000
RABAT	
Theodor Wille & Cia. Ltd.	63
SFAX	
Ornstein & Cia.	158
CANDIA	
Theodor Wille & Cia. Ltd.	125
BEYROUTH	
Mc. Kinlay S/A	125
JAFFA	
Sinner S/A	63
Ornstein & Cia.	502
SOUSSE	
Theodor Wille & Cia. Ltd.	62
PORT SUDAN	
Pinto, Lopes & Cia.	1,000
FAMAGUSTA	
E. G. Fontes & Cia.	95
Sinner S/A	31
LIMASSOL	
Sinner S/A	157
E. G. Fontes & Cia.	95
LARNACA	
Sinner S/A	56
ALGER	
A. Jabour & Cia.	250
E. G. Fontes & Cia.	126
GALATZ	
E. G. Fontes & Cia.	250
VARNA	
Sinner S/A	63
<b>Total</b>	<b>21,102</b>

AUG 23.

"Western Prince"	
NEW YORK	
American Coffee Comp.	2,250
Leon Israel Co. S/A	1,800
LONDON	
Hadjes & Cia.	250
<b>Total</b>	<b>4,300</b>

AUG. 23.

"Eastern Prince"	
MONTEVIDEO	
Vivacqua Irmãos S/A	2,755
BUENOS AIRES	
Ornstein & Cia.	750
Cia. Nac. Comm. de Café	100
Leon Israel Co. S/A	100
ROSARIO	
Rebello, Alves & Cia.	400
Ornstein & Cia.	350
ASSUMPÇÃO	
Vivacqua Irmãos S/A	109
<b>Total</b>	<b>4,555</b>

AUG. 23.

"La Plata Marú"	
-----------------	--

NEW-ORLEANS	
Marcellino Martins F. & C.	1,250
Theodor Wille & Cia. Ltd.	1,000
Cia. Nac. Comm. de Café	250
American Coffee Corp	250
HOUSTON	
Marcellino Martins F. & C.	500
LOS ANGELES	
Arbuckle & Cia.	100
S. FRANCISCO DA CALIFORNIA	
Arbuckle & Cia.	75
<b>Total</b>	<b>3,425</b>

AUG. 24.

"Aura"	
HELINGSFORS	
Theodor Wille & Cia. Ltd.	3,525
Mc. Kinlay S/A	1,000
Vivacqua Irmãos S/A	250
Marcellino Martins F. & C.	200
A. Jabour & Cia.	100
ABO	
Cia. Nac. Comm. de Café	600
Theodor Wille & Cia. Ltd.	400
Mc. Kinlay S/A	250
Sinner S/A	150
Marcellino Martins F. & C.	100
KOTKA	
Theodor Wille & Cia. Ltd.	225
Pinto, Lopes & Cia.	175
Cia. Nac. Comm. de Café	125
Vivacqua Irmãos S/A	75
A. Jabour & Cia.	75
WIBORG	
A. Jabour & Cia.	500
Theodor Wille & Cia. Ltd.	1,475
Pinto, Lopes & Cia.	100
MANTYLUOTO	
Theodor Wille & Cia. Ltd.	100
WASA	
Vivacqua Irmãos S/A	300
Theodor Wille & Cia. Ltd.	100
ULEABORG	
Theodor Wille & Cia. Ltd.	460
YXPILA	
Theodor Wille & Cia. Ltd.	50
<b>Total</b>	<b>10,275</b>

AUG. 24.

"Augustus"	
GENOA	
Luigi Bozzo di Ermilio	1,105
Souza, Pimentel & Cia	375
Mc. Kinlay S/A	215
A. Jabour & Cia.	175
TRIPOLI-AFRICA	
Theodor Wille & Cia. Ltd.	63
ALEXANDRIA	
Theodor Wille & Cia. Ltd.	625
E. G. Fontes & Cia.	375
Ornstein & Cia.	313
PORT SAID	
Ornstein & Cia.	750
SALONICA	
Sinner S/A	1,000
JAFFA	
Ornstein & Cia.	200
Theodor Wille & Cia. Ltd.	125
<b>Total</b>	<b>5,321</b>

AUG. 25.

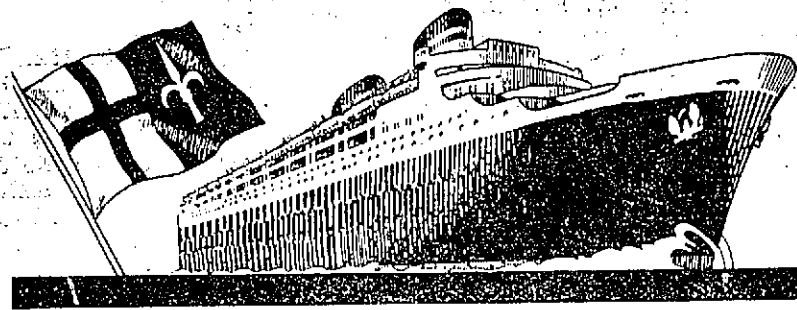
"Baependy"	
BUENOS AIRES	
A. Jabour & Cia.	1,000
Marcellino Martins F. & C.	500

MONTEVIDEO	
Marcellino Martins F. & C.	150
<b>Total</b>	<b>1,450</b>
AUG. 26.	
"Aldabi"	
ROTTERDAM	
Ornstein & Cia.	723
E. G. Fontes & Cia.	100
<b>Total</b>	<b>823</b>
<b>Total Overseas</b>	<b>67,642</b>

MANIFESTS OF COFFEE SANTOS

AUG. 19.

"Campana"	
MARSEILLE	
E. Johnston & Cia. Ltd.	2,925
Cia. Leme Ferreira	563
Theodor Wille & Cia. Ltd.	439
Oswaldo Ferreira & Cia.	175
Paiva, Nunes & Cia.	125
Pedro Joest	125
H. La-Domus & Cia.	125
Exp. Rubiac, Ltd.	63
ALEXANDRIA	
Theodor Wille & Cia. Ltd.	812
BARCELONA	
Cia. Prado Chaves	350
B. Gonçalves & Cia. Ltd.	100
BEYROUTH	
Tatcha & Cia. Ltd.	209
MALAGA	
Cia. Leme Ferreira	150
SOUSSE	
Theodor Wille & Cia. Ltd.	63
<b>Total</b>	<b>6,124</b>
AUG. 19.	
"Alcantara"	
PASAJES	
Rebello, Alves & Cia.	100
BILBAO	
E. Johnston & Cia. Ltd.	100
SAN SEBASTIAN	
Cia. Leme Ferreira	40
<b>Total</b>	<b>240</b>
AUG. 20.	
"Highland Chieftain"	
BUENOS AIRES	
Duarte Perella & Cia. Ltd.	462
S. A. Levy	182
Rebello, Alves & Cia.	100
Cia. Leme Ferreira	100
<b>Total</b>	<b>824</b>
AUG. 21.	
"Western Prince"	
NEW YORK	
American Coffee Comp.	5,250
Leon Israel Co. S/A	4,500
Cia. Leme Ferreira	2,790
Hard, Rand & Cia.	2,550
Theodor Wille & Cia. Ltd.	2,050
Junqueira, Meirelles & Cia.	1,875
Exp. Café Brasil, Ltd.	1,750
Lima, Nogueira & Cia.	1,375
Ray Deininger & Cia. Ltd.	1,250
Näumann, Gepp & Cia. Ltd.	1,000
Luiz Ferreira & Cia.	950



**"ITALIA" (FLOTTE) "COSULICH" S.T.N.**

Express service With The Most Luxurious Ships on The European Route	Santos	RIO	Bahia	Pernambuco	Dakar	Las Palmas	Gibraltar	Algier	Barcelona	Naples	Villafranco	Genoa	Trieste
Neptunia . . . . .	Sept. 24	Sept. 25	Sept. 27	Sept. 28	—	—	Oct. 5	—	—	Oct. 8	Oct. 7	Oct. 7	Oct. 10
Augustus . . . . .	Oct. 4	Oct. 5	—	—	—	—	—	—	Oct. 16	—	Oct. 17	Oct. 17	—
Oceania . . . . .	Oct. 15	Oct. 16	Oct. 18	Oct. 19	—	—	Oct. 26	—	—	Oct. 29	Oct. 28	Oct. 28	Oct. 31
Conte Grande . . . . .	Oct. 31	Nov. 1	—	—	Nov. 7	—	—	—	Nov. 12	—	Nov. 13	Nov. 13	—

LLOYD TRIESTINO'S TO: SYRIA - EGYPT - INDIA - CHINA & JAPAN with the famous "Contes" - Conte Verde, Conte Rosso & Victoria

**TOURIST TRIPS TO EUROPE**  
1st, 2nd and cabin class, return fares, with short validity, at special rates.  
**APPLY FOR DETAILS**

**CARGO SERVICE**

	R. Grande	Santos	RIO	Victoria	Bahia
Enrico Costa	—	9 Sept.	11 Sept.	13 Sept.	17 Sept.

General Agents **ITALMAR** for Brazil

Sede: S. A. BRASILEIRA DE EMPRESAS MARITIMAS Avenida Rio Branco, 4 Phone: 23-5840 Telegrams: ITALMARE-RIO

FILIAES: — S. Paulo — Santos — Bahia — P. Alegre — Rio Grande — Victoria — Recife

Sampaio Bueno & Cia. . . . .	1.000
Mc. Laughlin & Cia. . . . .	782
Oswaldo Ferreira & Cia. . . . .	653
A. Sion & Cia. . . . .	590
Cia. Prado Chaves . . . . .	500
Lutz Elverdin & Cia. Ltd. . . . .	500
Soc. Nacional Export. Ltd. . . . .	500
Martins, Gregory & Cia. Ltd. . . . .	475
E. Johnston & Cia. Ltd. . . . .	400
Exp. Rubiac, Ltd. . . . .	125
H. La Domus & Cia. . . . .	125
<b>Total . . . . .</b>	<b>30.900</b>

**AUG. 21**

"La Plata Maru"

HOUSTON

Theodor Wille & Cia. Ltd. . . . .	9.000
Hard, Rand & Cia. . . . .	3.725
Junqueira, Melbelle & Cia. . . . .	1.000
Vidalgal, Prado & Cia. . . . .	1.000
Zander & Cia. Ltd. . . . .	700
Naumann, Gepp & Cia. Ltd. . . . .	500
Franco, Soares & Cia. . . . .	375
Nioac & Cia. Ltd. . . . .	250

NEW ORLEANS

Hard, Rand & Cia. . . . .	3.000
Ray Deiminger & Cia. Ltd. . . . .	2.000
Zander & Cia. Ltd. . . . .	1.215
Theodor Wille & Cia. Ltd. . . . .	1.000
Cia. Paulista de Exportação . . . . .	975
Soc. Nacional Export. Ltd. . . . .	890
Vidalgal, Prado & Cia. . . . .	750
Naumann, Gepp & Cia. Ltd. . . . .	500
Martins, Gregory & Cia. Ltd. . . . .	250
Nioac & Cia. Ltd. . . . .	250
Exp. Rubiac, Ltd. . . . .	250

**SAN PEDRO**

Theodor Wille & Cia. Ltd. . . . .	5.000
American Coffee Corp. . . . .	2.000
Almeida Prado & Cia. . . . .	1.500
Naumann, Gepp & Cia. Ltd. . . . .	450
Lima, Nogueira & Cia. . . . .	125
Zander & Cia. Ltd. . . . .	125
H. La Domus & Cia. . . . .	100
Hard, Rand & Cia. . . . .	50

S. FRANCISCO DA CALIFORNIA  
Almeida Prado & Cia. . . . . 1.125

PORTLAND

Almeida Prado & Cia. . . . .	125
------------------------------	-----

TACOMA

Almeida Prado & Cia. . . . .	50
------------------------------	----

**Total . . . . . 38.190**

**AUG. 21**

"Coldbrook"

BOSTON

American Coffee Corp. . . . .	3.000
Artuckle & Cia. . . . .	2.950
E. Johnston & Cia. Ltd. . . . .	2.250
Lima, Nogueira & Cia. . . . .	2.000
Almeida Prado & Cia. . . . .	2.000
H. La Domus & Cia. . . . .	1.500
Zander & Cia. Ltd. . . . .	1.200
Theodor Wille & Cia. Ltd. . . . .	1.125
Leon Israel Co. S/A . . . . .	1.000
Sampaio Bueno & Cia. . . . .	1.000
Ray Deiminger & Cia. Ltd. . . . .	1.000
Hard, Rand & Cia. . . . .	825
Soc. Nacional Export. Ltd. . . . .	200
Naumann, Gepp & Cia. Ltd. . . . .	125
Junqueira, Melbelle & Cia. . . . .	125
Cia. Prado Chaves . . . . .	125

S. A. Levy . . . . .	2125
<b>PHILADELPHIA</b>	
Theodor Wille & Cia. Ltd. . . . .	1.500
Nioac & Cia. Ltd. . . . .	800
Artuckle & Cia. . . . .	250
Cia. Prado Chaves . . . . .	250
Eugenio Pabst & Cia. . . . .	250
Cia. Leme Ferreira . . . . .	250
<b>Total . . . . . 23.350</b>	

**AUG. 22**

"Paraná"

BREMEN

Exp. Café Brasil, Ltd. . . . .	1.250
--------------------------------	-------

**AUG. 23**

"Augustus"

GENOA

Petrone, Penteado & Cia. . . . .	2.350
Exp. Rubiac, Ltd. . . . .	700
Almeida Prado & Cia. . . . .	525
Cia. Leme Ferreira . . . . .	250
E. Gonçalves & Cia. Ltd. . . . .	200
<b>ALEXANDRIA</b>	
Hard, Rand & Cia. . . . .	750
Theodor Wille & Cia. Ltd. . . . .	501
<b>NAPLES</b>	
Exp. Rubiac, Ltd. . . . .	100
<b>Total . . . . . 5.376</b>	

**AUG. 23**

"Aura"

HELSINKI

Theodor Wille & Cia. Ltd. . . . .	300
Cia. Paulista de Exportação . . . . .	125

ABO	
Cia. Leme Ferreira	125
Cia. Prado Chaves	50

WIMPURI	
Leon Israel Co. S/A	53
Naumann, Gepp & Cia. Ltd	50

Total . . . . . 713

AUG. 24.

"Aldabi"

ROTTERDAM

Theodor Wille & Cia. Ltd.	3.713
Naumann, Gepp & Cia. Ltd	1.881
Hard, Rand & Cia.	1.481
E. Johnston & Cia. Ltd.	1.210
Martins, Gregory & Cia. Ltd	589
Rebello, Alves & Cia.	463
H. La Domus & Cia.	375
Cia. Prado Chaves	313
Sampalo Bueno & Cia.	158
Leon Israel Co. S/A	125
Almeida Prado & Cia.	122
Lutz Elverdin & Cia.	94

HAMBURG

Theodor Wille & Cia. Ltd.	62
Total	10.588

AUG. 24.

"West Imboden"

JACKSONVILLE

H. La Domus & Cia.	6.949
Theodor Wille & Cia. Ltd.	1.450

BALTIMORE

Theodor Wille & Cia. Ltd.	1.500
Hard, Rand & Cia.	1.400
Lima, Nogueira & Cia.	500
Oswaldo Ferreira & Ca.	500
Arbuckle & Cia.	490
H. La Domus & Cia.	250
Naumann, Gepp & Cia. Ltd	250

NORFOLK

Almeida Prado & Cia.	275
Zander & Cia. Ltd.	250
Cia. Leme Ferreira	250

Total . . . . . 13.974

AUG. 24.

"Eastern Prince"

BUENOS AIRES

Raphael Sampalo & Cia.	300
------------------------	-----

BAHIA BLANCA

Lima, Nogueira & Cia.	102
-----------------------	-----

Total . . . . . 402

AUG. 25.

"Suecia"

BUENOS AIRES

Nosack & Cia.	350
Vidigal, Prado & Cia.	310
Hard, Rand & Cia.	100

Total . . . . . 760

AUG. 25.

"Murjek"

NEW YORK

Theodor Wille & Cia. Ltd.	11.753
Naumann, Gepp & Cia. Ltd	9.745
Ray Delninger & Cia. Ltd.	8.750
H. La Domus & Cia.	6.552
Lima, Nogueira & Cia.	5.500
Almeida Prado & Cia.	5.286
Cswaldo Ferreira & Cia.	4.500
Cia. Leme Ferreira	3.500
Hard, Rand & Cia.	2.575

Cia. Prado Chaves	1.750
Cia. Paulista de Exportação	1.000
Exp. Rubiac, Ltd.	750
W. Gieseler	625
Franco, Soares & Cia.	625
Palva, Nunes & Cia.	625
Lutz Elverdin & Cia. Ltd.	359
Junqueira, Melrelles & Cia.	350
Vidigal, Prado & Cia.	250
Ribeiro do Valle & Cia.	250
Zander & Cia. Ltd.	100

Total . . . . . 62.826

Total Overseas . . . . . 195.517

COASTWISE

AUG. 23.

"Itatinga"

PORTO ALEGRE

Dep. Nacional do Café	71
-----------------------	----

AUG. 23.

"Araraquara"

PORTO ALEGRE

J. C. Silveira & Cia. Ltd.	30
Elias Elbas	25

Total . . . . . 55

Total Coastwise . . . . . 126

CLEARANCES FROM THE PORT OF VICTORIA, FROM AUGUST 10th. TO AUGUST 28th., 1935.

AUG. 10th.

"Bagé"

HAVRE

Ornstein & Co.	250
Hard, Rand & Co.	2.750
Theodor Wille & Co.	1.000
A. Prado & Co.	1.000
Vivacqua, Irmãos S/A	250
Cia. Caféeira de M. Geraes	250
Nolasco & Co.	125

ANTWERP

Ornstein & Co.	1.125
Mancel Camara	125
Arbuckle & Co.	63

ROTTERDAM

Armando Pinto & Co.	50
Total	6.988

AUG. 14th.

"Alphacca"

ROTTERDAM

Hard, Rand & Co.	475
Ornstein & Co.	378
Theodor Wille & Co.	125

HAMBURG

Ornstein & Co.	60
Cia. Naç. Comm. de Café	251

MALTA

Armando Pinto & Co.	562
GALATZ	
Arbuckle & Co.	250
Total	2.101

AUG. 15th.

"Eupatoria"

HAMBURG

Ornstein & Co.	1.625
Theodor Wille & Co.	1.375
A. Prado & Co.	250
Hard, Rand & Co.	125

Oliveira Santos & Co.	125
Total	3.500

AUG. 16th.

"San Francisco"

GOTHENBURG

Hard, Rand & Co.	250
Armando Pinto & Co.	125

KARLSTAD

Soc. Exportadora de Café	125
--------------------------	-----

HELSINGBORG

Oliveira Santos & Co.	125
-----------------------	-----

UMEA

Soc. Exportadora de Café	125
--------------------------	-----

ORNSKOLDIVK

Arbuckle & Co.	125
----------------	-----

Soc. Exportadora de Café	100
--------------------------	-----

GEFLE

Arbuckle & Co.	125
----------------	-----

Vivacqua, Irmãos S/A	125
----------------------	-----

Oliveira Santos & Co.	125
-----------------------	-----

STOCKHOLM

Hard, Rand & Co.	750
Theodor Wille & Co.	525
Arbuckle & Co.	250
Vivacqua, Irmãos S/A	375
Soc. Exportadora de Café	125
Oliveira Santos & Co.	125
Armando Pinto & Co.	63

3.563

AUG. 19th.

"Delville"

NEW ORLEANS

Vivacqua, Irmãos S/A	3.500
Hard, Rand & Co.	1.750
Theodor Wille & Co.	1.375
A. Prado & Co.	625
Cruz, Sobrinhos & Co.	1.000
Soc. Exportadora de Café	500
Arbuckle & Co.	250

HOUSTON

Hard, Rand & Co.	500
Theodor Wille & Co.	750
A. Prado & Co.	500
Jayme de Almeida	425

11.175

AUG. 20th.

"Delville"

MALTA

Ornstein & Co.	1.125
----------------	-------

MELLILA

Ornstein & Co.	312
----------------	-----

1.437

AUG. 20th.

"Laura C."

TRIESTE

Ornstein & Co.	1.347
Armando Pinto & Co.	212
Vivacqua, Irmãos S/A	125
A. Prado & Co.	250
Hard, Rand & Co.	126
Oliveira Santos & Co.	125

METCOVICH

Ornstein & Co.	125
----------------	-----

SUSAK

Ornstein & Co.	125
Vivacqua, Irmãos S/A	375

MALTA

Armando Pinto & Co.	240
---------------------	-----

3.657

AUG. 26th.

"Aura"

DANTZIG

Ornstein & Co.	140
----------------	-----

Arbuckle & Co. . . . .	125	Theodor Wille & Co. . . . .	100	AUG. 27th.	"Nevada"
Vivacqua, Irmãos S/A . . . . .	63		1.203		
GDYNIA					
Cia. Nac. de Comm. de Café . . . . .	313	AUG. 27th.		COPENHAGEN	
Armando Pinto & Co. . . . .	62			Ornstein & Co. . . . .	125
ABO					
Armando Pinto & Co. . . . .	125	"Munster"		AUG. 28th.	
WIBORG					
Ornstein & Co. . . . .	150	HAMBURG		"Aldabi"	
OSLO					
Ornstein & Co. . . . .	50	Theodor Wille & Co. . . . .	1.632	Ornstein & Co. . . . .	12.002
HELSINKI					
Ornstein & Co. . . . .	3.057	Ornstein & Co. . . . .	1.375	Hard, Rand & Co. . . . .	1.319
MALTA					
Oliveira Santos & Co. . . . .	125	Ornstein & Co. . . . .	50	Armando Pinto & Co. . . . .	312
					3.633

**COFFEE**

Bahia Stock on 30th August 1935 . . . . .	55.579
Entries during week ending 6th September 1935 . . . . .	8.341
Available . . . . .	63.920
Clearances during same weeks:	
To U. S. . . . .	—
To Europe . . . . .	3.559
To Elsewhere . . . . .	2.136
	5.695
Bahia Stock on 6th September 1935 . . . . .	58.225

**SUGAR**

The Pernambuco Market closed on 31st August 1935 with all quotations nominal, unaltered as compared with the previous Saturday.

The Movement at Pernambuco during the week ended 31st August 1935, was as follows, in bags of 60 kilos.

Stock on 24th Aug. 1935 . . . . .	420.700
Entries during week ended August 31st 1935 . . . . .	800
Available . . . . .	421.500
Deliveries during same week . . . . .	31.500
Stock on 31st August 1935 . . . . .	390.000
Ditto 1934 . . . . .	108.600

For the crop to date entries amounted to 4,357,300 bags as against 3,416,300 bags for same period last crop.

The Rio Market closed on 31st Aug. 1935 with prices quoted as follows per 60 kilos: crystals 50\$000 to 51\$000, demeraras 47\$000 mascavinho, nominal and mascavo 40\$000 to 41\$000.

The Movement at Rio de Janeiro for the week ended 31st Aug. 1935 was as follows, in bags:

Stock on 24th Aug. 1935 . . . . .	24.072
Entries during week ended 31st Aug. 1935 . . . . .	51.619
Available . . . . .	75.691
Deliveries during same week . . . . .	36.582
Stock on 31st Aug. 1935 . . . . .	39.109
Ditto on 31st Aug. 1934 . . . . .	24.092

**COTTON**

The Pernambuco Market closed on 31st August 1935, with first sorts quoted at 56\$ against 60\$ on the previous Saturday and 51\$000 on 31st August 1934.

The Movement at Pernambuco for the week ended 31st August 1935 was as follows, in bales of 60 kilos.

Stock on 24th August 1935 . . . . .	14.300
Entries during week ended 31st Aug. 1935 . . . . .	2.900
Available . . . . .	17.200
Deliveries during same week . . . . .	2.500

Stock on 31st Aug. 1935 . . . . .	14.700
Ditto 1934 . . . . .	8.700

For the crop to date entries amounted to 271,200 bales against 214,700 bales during same period last crop.

The Rio Market closed on 31st Aug. 1935 with prices quoted as follows per 10 kilos:

		24th Aug. 1935	31st Aug. 1935
Seridó 3x4 . . . . .	53\$000—52\$000	51\$000—50\$000	
Sertões 3x5 . . . . .	52\$000—49\$000	49\$000—48\$000	
Malta 3x5 . . . . .	43\$000	43\$000	
Paulista 3x5 . . . . .			

The Movement at Rio de Janeiro for the week ended 31st Aug. 1935, was as follows:

Stock on 24th Aug. 1935 . . . . .	6.389
Entries during week ended 31st Aug. 1935 . . . . .	2.838
Available . . . . .	9.227
Deliveries during same week . . . . .	2.186

Stock on 31st Aug. 1935 . . . . .	7.041
Ditto 1934 . . . . .	5.750

**THOMAS DRAPER**

MINING ENGINEER

Caixa Postal 2955 Rio de Janeiro

**SUGAR AND COTTON QUOTATIONS**

RIO DE JANEIRO, 6th September, 1935.

COTTON SERVICE		31	2	3	4	5	6
Liverpool 12.30 P.M.							
São Paulo fair spot		6.04	6.06	5.96	5.94	5.99	6.01
Pernambuco Maceió fair spot		5.89	5.91	5.81	5.79	5.84	5.86
American Middling spot		6.14	6.21	6.06	6.04	6.09	6.11
American futures	October	5.03	5.56	5.64	5.61	5.66	5.59
	January	5.57	5.58	5.57	5.55	5.60	5.62
	March	5.60	5.60	5.59	5.57	5.62	5.64
	May	5.80	5.61	5.59	5.58	5.62	5.65
New York American Middling Uplands		10.65	Holiday	10.65	10.70	10.65	10.75
New York futures	October	10.31	"	10.29	10.36	10.32	10.40
	January	10.38	"	10.31	10.44	10.40	10.45
	March	10.44	"	10.39	10.50	10.46	10.61
	May	10.49	"	10.41	10.55	10.51	10.58

SUGAR SERVICE							
New York futures	September	Holiday	Holiday	2.45	2.50	2.52	2.56
	December	"	"	2.29	2.38	2.42	2.49
	January	"	"	1.98	2.04	2.06	2.04
	March	"	"	1.99	2.05	2.06	2.05
London futures	September	4/1	4/1	4/2	4/2	4/2	4/1 1/2
	October	4/1 1/2	4/1 1/2	4/3	4/3	4/2	4/1 3/4
	December	4/2	4/2	4/4 1/4	4/4 1/4	4/3 3/4	4/3 1/2
	March	4/3 1/2	4/2 3/4	4/7 1/4	4/7	4/6 1/2	4/6 1/4

RUBBER SERVICE							
Upriver Fine		12 7/8	Holiday	12 7/8	12 1/2	12 5/8	12 5/8
Smoked Sheets		11 7/8	"	11 7/8	11 1/2	11 5/8	11 5/8
Markets		Steady	"	Steady	Steady	Steady	Steady

**MEAT**

**MEAT CLEARANCES DURING WEEK-ENDING 23rd. AUGUST, 1935.**

(PER DESTINATIONS).

AUG. 16th.		Kilos
<b>"Augusta"</b>		
GENOA		
Frig. Wilson	Frozen beef	307,225
Frig. Anglo	Frozen beef	334,044
Armour Co.	Frozen beef	172,417
AUG. 17th.		
<b>"Avila Star"</b>		
LONDON		
Frig. Wilson	Frozen offal	222,184
Frig. Wilson	Frozen beef	10,631
Frig. Wilson	Frozen pork	27,193
Frig. Anglo	Preserved	38,287
Armour Co.	Frozen beef	11,440
AUG. 18th.		
<b>"Dunster Grange"</b>		
LONDON		
Armour Co.	Frozen offal	43,038
Frig. Wilson	Frozen offal	60,394
AUG. 19th.		
<b>"Campana"</b>		
GENOA		
Armour Co.	Frozen beef	20,463
BEYROUTH		
Frig. Anglo	Preserved	12,973
AUG. 22nd.		
<b>"Nela"</b>		
GENOA		
Frig. Anglo	Frozen beef	397,963
Frig. Wilson	Frozen beef	485,115
Total		2,143,367

**MEAT CLEARANCES DURING WEEK-ENDING 31st. AUGUST, 1935.**

(PER DESTINATIONS).

AUG. 24th.		Kilos
<b>"Rodney Star"</b>		
LONDON		
Frig. Anglo	Frozen offal	39,712
Frig. Anglo	Preserved	25,215
AUG. 26th.		
<b>"Highland Monarch"</b>		
ARMOUR CO.		
Armour Co.	Frozen beef	38,980
Armour Co.	Smoky pork	41,469
Armour Co.	Preserved	2,750
<b>"Cabo San Tomé"</b>		
CEUTA		
Frig. Wilson	Frozen pork	3,351
<b>"Arizona Maru"</b>		
CAPE TOWN		
Armour Co.	Preserved	1,260
DURBAN		
Armour Co.	Preserved	1,260
PORT ELIZABETH		
Armour Co.	Preserved	1,260
Total		155,267

**FRUIT**

**CONFIRMATION OF SANTOS AND S. SEBASTIAO FRUIT CLEARANCES DURING WEEK-ENDING AUG. 16th. AND 23rd., 1935.**

FROM SANTOS		
BANANAS IN BUNCHES		
AUG. 12th.		
<b>"Highland Patriot"</b>		
London		6,394

AUG. 15th.

<b>"Montferland"</b>	
Amsterdam	4,666

AUG. 17th.

<b>"Avila Star"</b>	
Kilos London	12,727

AUG. 18th.

<b>"Dunster Grange"</b>	
London	8,044

AUG. 10th.

<b>ORANGES IN CASES</b>	
	5891

AUG. 10th.

<b>"Arlanza"</b>	
Southampton	15,514

AUG. 15th.

<b>"Montferland"</b>	
Amsterdam	11,304

AUG. 10th.

<b>"Avila Star"</b>	
London	2,004

AUG. 17th.

<b>FROM SAO SEBASTIAO</b>	
<b>BANANAS IN BUNCHES</b>	

AUG. 17th.

<b>"Avila Star"</b>	
London	27,874

AUG. 17th.

<b>ORANGES IN CASES</b>	
	1,263

AUG. 17th.

<b>"Avila Star"</b>	
London	1,263

AUG. 17th.

<b>"Avila Star"</b>	
London	1,263



## THE BRITISH EXPORT GAZETTE.

### GREAT BRITAIN'S LEADING EXPORT JOURNAL

FOUNDED 1892

**M**ERCHANTS, IMPORTERS, and AGENTS in Brazil who are interested in the Trade of Great Britain should Subscribe regularly to this old-established and influential publication. It provides its Subscribers with the most exhaustive and exclusive commercial news service and is the connecting link between British Manufacturers and Merchants in all parts of the world.

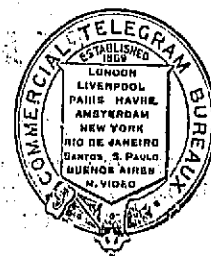
*The Annual Subscription is 10s. or 25s. for Three Years, which includes unlimited use of its Information and Agency Departments*

**"The British Export Gazette" is invaluable to Buyers of British Goods and all who Want to Represent British Firms in Brazil**

**Head Offices: 76, FINSBURY PAVEMENT, LONDON, E. C. 2.**

## THE COMMERCIAL TELEGRAM BUREAUX

Supply Official Reports and Quotations of all the leading American, European, Brazilian and Indian Markets to the Cotton, Coffee, Grain, Produce, Provision, Petroleum and Sugar Trades of Europe and America: also re-transmit Private Despatches by Cable to multiple addresses in Europe and North and South America.



Subscribers furnished with Intermediate or Closing American Reports at night by special arrangements with London, Liverpool, or Amsterdam offices.

FOR TERMS &c., APPLY TO CHIEF OFFICE:

**COMTELBURO, Limited, 11, Tokenhouse Yard, London I. C. 2** (open day and night)

Registered Telegraphic Address: "COMTELBURO" Telephs London Metropolitan 8244 (4 lines)

LONDON: 30 Mincing Lane, E. C. 3. Telephones  
LIVERPOOL: 7, Rumford Str. 1983 Centr. (two)  
NEW YORK: 66/70 Beaver Street, Hanover 2-4450  
AMSTERDAM: Spuistraat 4-3268Z.  
HAVRE: Rue Victor Hugo, 136  
ANTWERP: Rue des Douze Mois, 19. 11852  
PARÁ: Avenida Castilhos França, 71, Caixa Postal  
CEARÁ: Rua Major Facundo 680; Caixa Postal 198  
PERNAMBUCO: Rua Vis. Itaparica, 207 Caixa 299

BAHIA: Rua Portugal, 16, Caixa 203  
VICTORIA: Rua 1º de Março, 46; Sala 8, C. Postal 40  
RIO DE JANEIRO: Av. R. Branco, 33-1.º, C. 266  
SANTOS: Rua Cidade de Toledo, 7, Caixa 243  
S. PAULO: Rua 3 de Dezembro, 48, 1º Caixa 1281  
CURITYBA: Av. João Pessoa, 71; 2º and., C. Postal 79  
RIO GRANDE: Rua Riachuelo, 199; Caixa Postal 92  
PORTO ALEGRE: R. Siqueira Campos 903, C. P. 500  
B. AIRES: Bolsa de Comercio, 239, tel. U. T. 3-2340.

## Subscription Form: To WILEMAN'S BRAZILIAN REVIEW

P. O. BOX 809-Rio de Janeiro

Please enter my/our subscription to WILEMAN'S BRAZILIAN REVIEW for one year beginning

..... for which I/we enclose order.....

TERMS (POST FREE)

IN BRAZIL RS: 100\$000 — Payable in advance

ELSEWHERE £3/0/0

ADVERTISMENT RATES  
ON REQUEST.

SINGLE COPIES RS: 2\$000  
(to subscribers only)

# THE CALORIC COMPANY

RIO DE JANEIRO

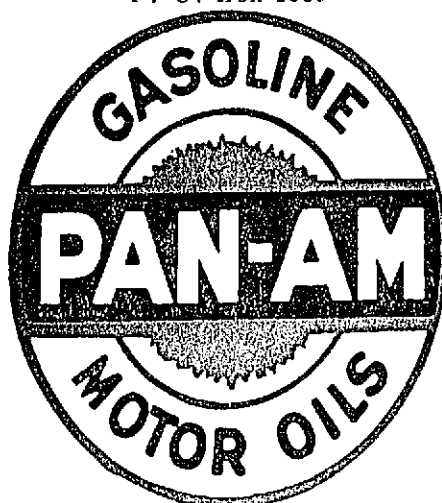
AVENIDA PRESIDENTE WILSON, 305 — 4° andar

Telegraphic Address:  
"Petroloric"

P. O. Box 1060

Telephone 22-5133

Fuel Oil  
For industries,  
Railways, Steamers



Diesel Oil  
For internal  
Combustion Engines

Fuel Oil Stations at:

**PARÁ, PERNAMBUCO, BAHIA AND SANTOS**

## LAMPORT & HOLT LINE LIMITED. BRAZIL SERVICE

FROM GLASGOW AND LIVERPOOL to: Bahia, Rio de Janeiro, Santos, Rio Grande do Sul, Pelotas & Porto Alegre. From New York and South Atlantic Ports to Brazil and the River Plate.

SAILINGS	From Glasgow	From Liverpool	From New York	Due Rio	Due Santos
SWINEURNE . . . . .	—	—	24th Aug.	—	15th Sept.
LEIGHTON . . . . .	17th Aug.	24th Aug.	—	15th Sept.	16th Sept.
BRUYERE . . . . .	14th Sept.	21st Sept.	—	12th Oct.	14th Oct.
BROWNING . . . . .	12th Oct.	19th Oct.	—	9th Nov.	11th Nov.
BRONTE . . . . .	9th Nov.	16th Nov.	—	7th Dec.	9th Dec.
LINNELL . . . . .	7th Dec.	14th Dec.	—	4th Jan.	6th Jan.

### HOMeward SAILINGS

BONHEUR . . . . . leaves Santos 20th September, Rio 22nd September for New York.  
 LASSELL . . . . . leaves Santos about 16th Sept. for Liverpool & Glasgow.  
 LINNELL . . . . . leaves Santos about 24th Sept., Rio 26th Sept. for Liverpool.

Cargo taken on through Bills of Lading, via Rio de Janeiro, to Aracajú, Victoria, Antonina, Paranaguá, São Francisco and Santa Catharina

All steamers, outwards and homewards, have accomodation available for Saloon Passengers at economic rates.

Apply to:—

Santos:  
F. S. HAMPSHIRE & Co. Ltd.  
Bahia:  
F. STEVENSON & Co. Ltd.  
Pernambuco:  
WILLIAMS & Co.

AV. RIO BRANCO, 46-4.º and.  
Tel. 23-1980

**RIO DE JANEIRO**

S. Paulo:  
F. S. HAMPSHIRE & Co. Ltd.  
Buenos Aires:  
LAMPORT & HOLT LINE Ltd.  
Montevideo:  
M. REAL AZUA.