

Wileman's BRAZILIAN REVIEW

WEEKLY JOURNAL OF TRADE, FINANCE, ECONOMICS AND SHIPPING.

Rua Theophilo Ottoni, 41
RIO DE JANEIRO

ESTABLISHED 1898

CAIXA POSTAL
(P. O. Box) 809

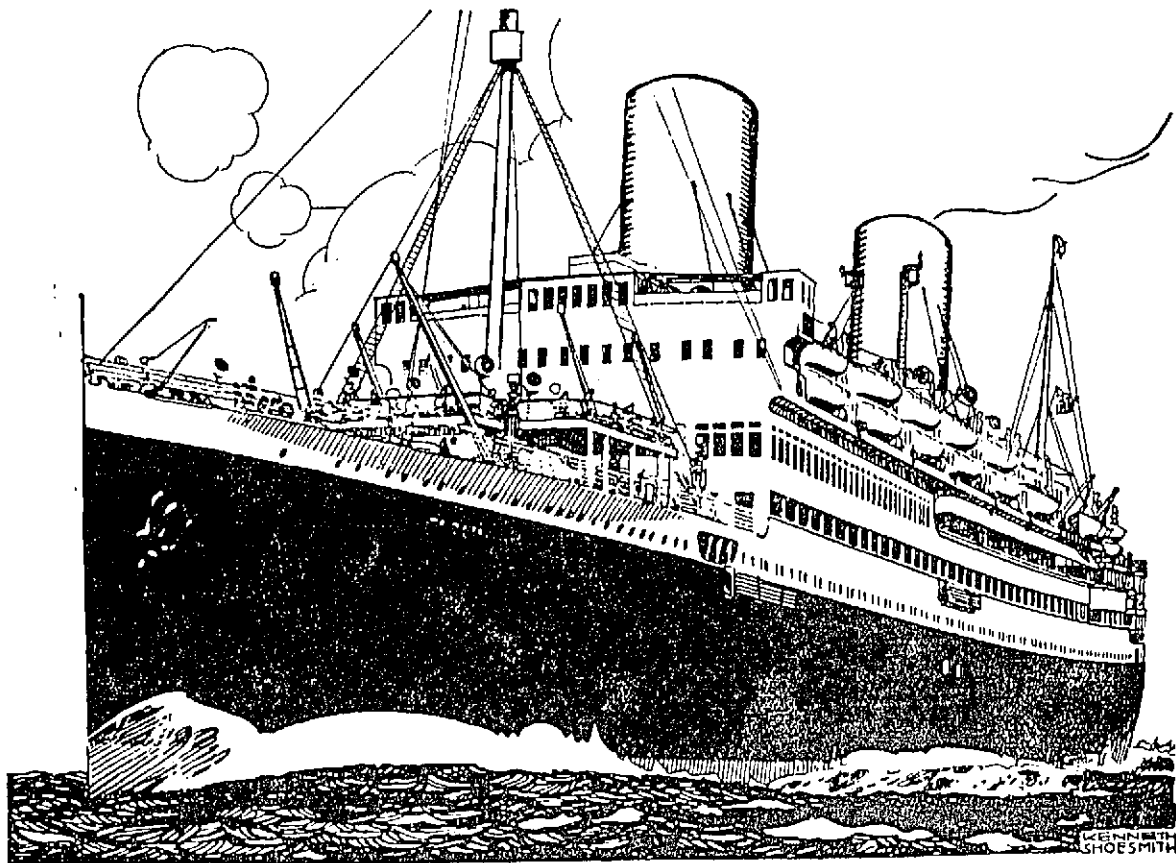
VOL. 27

RIO DE JANEIRO, Monday, 8th. July, 1935

N.º 27

2 \$ 0 0 0

ROYAL MAIL



ACCELERATED SERVICE TO EUROPE "ASTURIAS" "ALCANTARA"

October 29

December 10

August 20

October 1

REGULAR SAILINGS BY "ARLANZA" - "ALMANZORA"
AND "HIGHLAND" VESSELS

SPECIAL TOURIST RETURN TICKETS BY ALL SHIPS
AT GREATLY REDUCED RATES

For further information apply to

THE ROYAL MAIL STEAM PACKET COMPANY — Agents: ROYAL MAIL LINES, LIMITED
RIO DE JANEIRO: AVENIDA RIO BRANCO 51/55 — TEL. 23-2161
ALSO AT SANTOS, SÃO PAULO, BAHIA, PERNAMBUCO, RIO GRANDE, ETC.

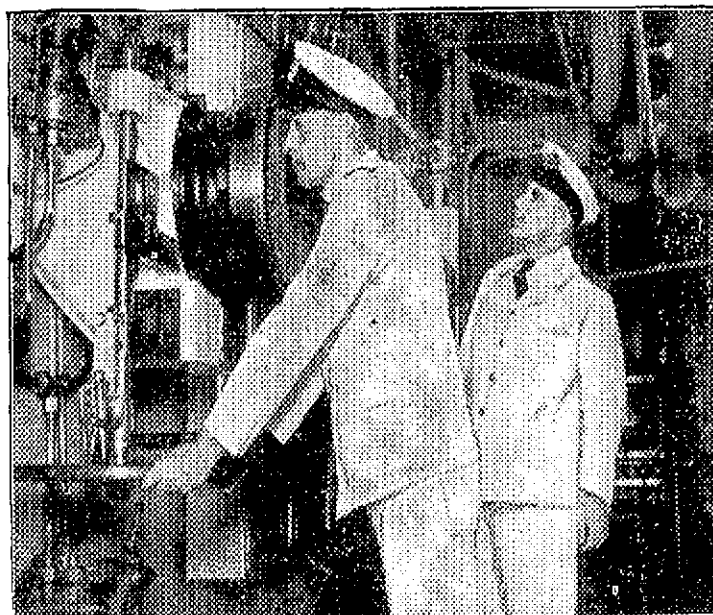
A British Tradition — Seamanship and Service!



ON every Blue Star ship you are always pleasantly conscious of excellent service in the dining salon, in your cabin, and in the lounges. But Blue Star service is not limited to the stewards. On the bridge, and the engine room are officers and men who also uphold the Blue Star code of service.

These are the men who handle the ships. Behind each able individual are many years of experience at sea and a tradition centuries old. These men explain in a large measure why Blue Star ships are smarter in appearance, why passengers feel completely safe on our line, and why there is a certain elusive but very real quality of genuine hospitality on Blue Star vessels.

Blue Star officers and stewards both follow the same ideal—to serve you well. That is why passengers go the Blue Star way again and again. There is something more than steel and machinery which goes into the making of our ships. It's the men of all ranks who have given Blue Star ships a reputation for unusual courtesy, friendliness and efficiency which few other lines can equal.



★ ★ ★
TO Buenos Aires | **To Europe**

Avila Star 29th. July | Almeda Star 23rd. July

BLUE STAR LINE

THE LINE OF COMFORT, SERVICE AND COURTESY

COMPANHIA AMERICANA DE SEGUROS

ESTABLISHED IN 1918

DIRECTORS:

Dr. Erasmo I. de Assumpção
Dr. Noé Ribeiro
Dr. Anesio Augusto do Amaral
Frank C. Toogood



HEAD OFFICE:

Rua 15 de Novembro, 29-1st floor
SÃO PAULO
Tels.: 2-1217 e 2-1132

Capital—Fully paid up Rs. 2.500:000\$000
Losses paid Rs. 24.287:250\$024
Reserves Rs. 3.448:372\$451

Fire - Marine - Transit - Plate Glass

RIO BRANCH:

Rua da Quitanda, n.º 153 — 1st Floor
P. O. Box N. 959 — Telephone 23-3317

— RIO DE JANEIRO —

Announcing the Early Publication
of a Second and Revised
Edition of

All About Coffee

(first published 1932).

By William H. Ukers, M. A.

FEATURES:

Complete Reference Table of All Coffees—A Coffee Chronology of 500 Dates—A Coffee Thesaurus A Coffee Bibliography of 1350 References—Authoritative Information on the Chemistry and Pharmacology of Coffee, Coffee Cultivation, Preparation, and Marketing—World Production and Consumption of Coffee—History of the Coffee Houses of the Old and New Worlds—Profusely Illustrated. Three pages in color.

Bound in cloth—Stamped in gold
Price, \$15. Postpaid. Cash with the order.
U. S. currency

Published by

The Tea and Coffee Trade Journal Co

79 Wall Street, New York

Wileman's Brazilian Review

A WEEKLY JOURNAL OF TRADE, FINANCE, ECONOMICS AND SHIPPING

VOL. 27

Monday, 8th. July, 1935

N. 27

Notes

U. S. economic situation

The ending of the United States fiscal year on Sunday has rapidly shifted national attention from governmental expenditures to the government's income, with politicians and the public increasingly aware that five consecutive years of budgetary deficits cannot fail to result in burdensome taxation.

Already the wealthier classes are protesting strenuously against President Roosevelt's taxation program. The excess of federal expenses over receipts mounted rapidly through June foreshadowing a deficit for the whole year far greater than was anticipated.

On June 26 the Treasury reported a deficit of \$3,444,000,000 compared with \$3,886,000,000 on the corresponding date last year.

At the same time, when Treasury returns are fully compiled they are expected to reflect the improvement in the general economic condition of the country.

Although the national government continues to incur a large budgetary deficit, the government's credit remains high, and ample funds for extraordinary expenses have been forth coming at all times at moderate interest rates.

The Federal government's policy does not intend a balanced budget in the next year, as many authorities had hoped when the two-year emergency program was put into effect in 1933. The expected net deficit in the fiscal year 1936, estimated at \$3,892,000,000 (outside of debt retirements) will be incurred on account of emergency recovery expenditures, chiefly the huge "works program".

President Roosevelt's budget message to Congress January 3, 1935 estimated the deficit for the fiscal year ending June 30th. at \$4,869,000,000 including \$573,000,000 for statutory debt requirements.

São Paulo Coffee Institute

A committee comprised of bondholders of the S. Paulo Coffee Institute on Tuesday requested the banking firm of Lazard Brothers to make an announcement to the effect that NO agreement had so far been reached with the Brazilian authorities regarding the application of deposits in milreis.

The committee also requested Lazards to announce that nothing had been decided on the argument now being advanced in Brazil that the bondholders have in some way invalidated their claims to the milreis deposits through surrendering coupons in return for partial payments under the decree.

In view of this, the committee advised that pending a settlement of these points, the surrender of further coupons for partial payments might be prejudicial to the interests of the bondholders as a whole.

London - Thursday — The banking firm of Lazard Brothers to-day announced that they had funds available for the payment of 25% on coupon No. 18 and a further twenty per cent on coupon No. 15 of the State of São Paulo 7½% Coffee Institute sterling bonds.

Brazilian Cotton in England

Last Monday's "Manchester Guardian", comments on the satisfactory progress of the commercial adjustments being effected between Great Britain and Brazil. This is attributed chiefly to the increase in cotton exports from Brazil to England.

Exports of Maté to the United States

Telegrams from Washington show that imports of Maté into the United States have materially increased. The following figures are quoted:

	1934		1935	
	Jan/May.		Jan/May.	
From Argentina	27,220 kilos.		90,720 kilos.	
From Brazil	16,333 "		22,680 "	

Although the above figures show excellent increases, imports dropped somewhat from April to May, as follows:

	April		May	
	From Argentina	29,030 kilos.		12,250 kilos.
From Brazil	3,030 "		2,270 "	

Coffee & Cotton

At a time when the Anglo-Brazilian agreement appears to be based on the advantages offered to Brazilian Cotton, the statistics recently published are inclined to lead to misunderstanding in banking circles.

Competent observers insist that Lancashire will require regular supplies from Brazil, all the more so as it is known that the British manufacturers accepted the Brazilian fibre due not only to its sound quality, but also in view of its extreme adaptability to dyes — a point to be considered in competition with American fibres.

The question of interchange with Germany in "blocked Marks" was again raised and met with same arguments as usual.

A financial journal, writing on this question in a recent issue, said that as there appeared to be no difficulty in the disposal of Brazilian cotton, it would be to this country's advantage to export Coffee to Germany, where the market has been poor lately, by which Brazil would gain a considerable credit, which could be turned to some use in international commercial relations. — this theory would appear most reasonable, in view of the fact that a great deal of coffee is marketless, — or worse, — valueless.

U. S. Frozen Credits in Brazil

It was stated on reliable authority that the Foreign Trade Council is seeking an agreement whereby Brazil would issue bonds to the amount equivalent to blocked commercial balances owing United States exporters which would be accepted by the Export-Import Bank as security for new credits to be extended to exporters for the financing of new trade to Brazil.

Representatives of the council, after conferring with Ambassador Oswaldo Aranha on Wednesday evening visited the State Department and the Export-Import Bank where they discussed the scheme with officials.

It was made clear that no agreement had yet been reached with the Brazilian Government. The Bank was noncommittal and will remain so until it may be required to pass on the agreement if and when it is made.

It was reliably said that the plan will involve the issuance of comparatively short-term Brazilian bonds, the first of the series maturing in six months and the others at intervals of a year thereafter in series.

Council representatives stated that they were making progress and hoped to be able to furnish further details this week.

Willeman's Brazilian Review

Established 1898

EDITOR - OSCAR LOUP.

OFFICES: R. THEOPHILO OTTONI, 41, 3.º ANDAR.
RIO DE JANEIRO

Telephone: 23-1354 - Caixa do Correio (P.O.Box) 809
Tel. Address: "REVIEW", Riojaneiro.

Redactor Responsavel: Mario da Silva Costa.
Redacção e Administração: R. Theop. Ottoni, 41-3º

Subscription (Payable in Advance) :—
Brazil, 100\$000 per annum. Abroad £3 per annum.
Separate copies 2\$000. Back Numbers 2\$500 per copy.

ADVERTISING RATES ON APPLICATION

AGENTS

NEW YORK:—"The Tea and Coffee Trade Journal",
79, Wall Street.

COPENHAGEN:—"The Scandinavian Shipping
Gazette", 38 Vestre Boulevard.

NOTICE:— The Editor is not responsible for Cor-
respondence or Articles signed with the writer's
name or initials, or with a pseudonym, or that are
marked "Communicated". The Editor must likewise
not necessarily be held in agreement with the views
therein contained or with the mode of expression.

Original articles submitted for publication must
be considered, unless otherwise arranged, exclusive
to and the sole property of the Review.

In accordance with the Brazilian Press Law,
no correspondence or contribution will be published
in this Review unless authenticated by the date,
name, and address of the contributor, though not
necessarily for publication.

Announcements concerning subscribers and
friends are inserted free of charge.

RIO CAPE LINE LTD.

Direct Cargo Service from Rio de Janeiro
and Santos to
Cape Town, Mossel Bay, Algoa Bay, East
London, Durban, and Lourenço Marques

THE JAPANESE STEAMER

AFRICA MARU

(Under Contract)
Sailing 9th. July 1935

Followed by

HAWAII MARU

Sailing 7th August 1935

For further particulars apply to:
HOULDER BROTHERS & Co. (BRAZIL) LTD.
Agents for the Rio Cape Line, Ltd.

AVENIDA RIO BRANCO, 63/67 1st. floor
Telephones 23-0754 and 23-0588

RIO DE JANEIRO

MAIL FIXTURES

Departures from Rio, July 8th onwards
TO ENGLAND & EUROPE:

FROM	DEP. Rio	Ship	Destination	Phone Rio N°
B. A.	10	Oceania	Trieste	23-5840
B. A.	12	Bruyère	Liverpool	23-1980
B. A.	13	J. Charlotte	Amstwerp	23-4828
B. A.	14	Almanzora	S'mpton	23-2161
B. A.	14	Aurigny	Dunkerque	23-1965
B. A.	16	High Princess	London	23-2161
B. A.	17	General Osorio	Hamburg	23-5947
B. A.	20	Florida	Marselles	23-2923
B. A.	21	Eemland	Amsterdam	22-9900
B. A.	23	Almeda Star	London	23-5988
B. A.	28	San Francisco	Finland	23-2896
B. A.	29	Avelona Star	London	23-5988
B. A.	30	Highland Brigade	London	23-2161
B. A.	31	Belle Isle	Dunkerque	23-1965
B. A.	31	General Artigas	Hamburg	23-5947

FROM ENGLAND & EUROPE:

FROM	Arrive Rio	Ship	DEP. Rio	Destina- tion	Phone Rio N°
Hayre	11	Belle Isle	11	B. A.	23-1965
Antwerp	14	Londonier	14	B. A.	23-4828
Hamburg	13	General Artigas	13	B. A.	23-5947
London	15	Avelona Star	15	B. A.	23-5988
Hamburg	17	Cap Arcona	17	B. A.	23-5947
London	22	High Patriot	22	B. A.	23-2161
Marselles	23	Alsina	23	B. A.	23-2930
Trieste	25	Neptunia	25	B. A.	23-5840
London	29	Avila Star	29	B. A.	23-5988
London	29	Arlanza	29	B. A.	23-2161
Hamburg	29	Cap. Norte	29	B. A.	23-5947

TO U. S. A. & JAPAN

FROM	DEP. Rio	Ship	Destination	Phone Rio N°
B. A.	9	Africa Maru	Japan	23-5988
B. A.	11	Western Prince	New York	23-0754
B. A.	18	Montevideo Maru	Japan	23-5988
B. A.	18	American Legion	New York	23-2000
B. A.	25	Southern Prince	New York	23-0754
B. A.	27	Delsud	New Orleans	23-1455
B. A.	29	Hollywood	Canada	23-2000

FROM U. S. A. & JAPAN

FROM	Arrive Rio	Ship	DEP. Rio	Destina- tion	Phone Rio N°
New York	12	South. Prince	12	B. A.	23-0754
Canada	12	West Ira	12	B. A.	23-2000
New Orleans	17	Delvalle	17	B. A.	23-1455
New York	19	West. World	19	B. A.	23-2000
New York	26	North. Prince	26	B. A.	23-0754

AIR-MAIL SERVICE

To & From South America

SERVICE BY	Arrive Rio	DEP. Rio	Destination
Condor	9	12	P. Alegre
Panair	10	12	U. S. A.
Condor	11	11	Europe
Air France	12	13	Europe
Condor	16	19	P. Alegre
Panair	17	19	U. S. A.
Condor	18	18	Europe
Air France	19	20	Europe

MAPPIN STORES

SOCIEDADE ANONIMA INGLEZA

The hub of shopping activity in the Coffee Metropolis of Brazil — English spoken in all departments — Visitors are specially invited to make use of our British Library and Rest Rooms — Tea Rooms and Restaurant adjoining



DEPARTMENTS

DRESSES & SPORTS WEAR
TAILOR-MADE COATS
DRESSMAKING-FURS
MILLINERY

UNDER WEAR
BABY-LINEN
CORSETS
GIRLS DEPT.

SILKS
MATERIALS
HOSIERY
GLOVES, ETC.

BOHEMIAN GOODS
BAGS & VANITIES
NEEDLE WORK
PHOTOGRAPHY

COMPLETE
OUTFITTING
FOR MEN & BOYS
TAILORING
FOOTWEAR

Beauty Salon

Furniture
& Carpets

Domestic
Sections

Travel Bureau

MAPPIN STORES - S. PAULO

LONDON :—
14, Henrietta St., W. —

Branch at Rio de Janeiro

Praia de Botafogo, 360
Furniture & Furnishing only

Deputation of Coffee Exporters to Minister of Finance

At the beginning of last week a deputation of the most important coffee exporters of Rio presented themselves before Sr. Souza Costa. with a petition that the recent decree suspending shipments of the new coffee crop, be annulled.

The spokesman of the Coffee Exporters, Sr. Pedro Vaccqua, expressed himself in the following terms:

"Trusting in the coffee legislation and the resolutions of the D. N. C. exporters contracted for the sale of hundreds of thousands of bags of coffee of the new crop, for delivery during the current month. These contracts are all registered in the Departamento Nacional do Café, and at the Bank of Brazil. The Government's action has seriously affected these contracts, as the buyers, who are pressed for delivery, will certainly cancel their orders, and look to other markets for their necessities. If, for this motive, the exporters are prejudiced, they are also placed in a most delicate situation in their relations with overseas buyers. They have closed deals for coffee of the new crop, and must supply, or, to say the least, lose the business. At the moment there is a heavy demand for new coffees and if this opportunity is not made use of, exports will suffer severely. The unpleasant state of affairs suffered during the São Paulo Revolution in 1932 will be repeated — buyers, unable to obtain their requirements of new coffee through Brazilian ports turned to Central America and Bolivia, which incurred a loss of over three million bags to Brazil. We are requesting the Government to facilitate our meeting our commitments — to permit the supplies of new coffee to come into the market, so that shipments can be effected before the end of the month. We are here solely for this purpose and trust our position will be understood. The points which, after all, are common to the interests of Brazil".

The Minister of Finance declared that he would approach Dr. Armando Vidal, of the Departamento Nacional do Café, in the connection, as he wished to meet the claims of the exporters in so far as it was possible, by reaching an early solution of the matter.

São Paulo

Statistics show that the State of São Paulo boasts 6,469 factories, excluding rural industries. The Capital invested totals Rs. 1,454,013,142\$000; employees number 162,902 workers; Horse Power aggregates 212,108.

The production of these factories amounts to Rs. 1,917,468,839\$000.

The above figures do not include electric power companies.

Brazilian Debt services

Recent uneasiness on the foreign market regarding the Brazilian debt service was alleviated Tuesday with the announcement that funds were available for the service of three São Paulo issues.

This includes the payment of 22 1/4 per cent on coupons of the São Paulo 6% external sterling loan 1928 and 22 1/2 per cent of July 1, 1935 coupons of the São Paulo 8% sterling bonds 1921 and 20% on the coupons of the City of São Paulo 6% gold bonds 1908.

U. S. Trade Agreement

Speaking before the Institute of Public Affairs on Tuesday at the University of Virginia Henry F. Grady, chief of the Trade Agreements section of the State Department characterized the Brazilian United States agreement as "an important agreement affecting trade which even in 1934 totalled \$130,000,000".

He said that several other Latin American countries had informed the United States of their desire to enter reciprocal negotiations.

Anglo-Brazilian Trade Agreement

The announcement that the Commission on Foreign Affairs of the Brazilian Camara of Deputies had approved the Anglo-Brazilian financial agreement stimulated more cheerful views of the Brazilian situation in London on Thursday last.

The evening newspaper "The Star" in an article said: "Brazil has made strenuous efforts to meet a difficult situation... The milreis has been temporarily depressed lately vis-a-vis with sterling by large sales of Brazilian cotton to Germany against Reich marks which have clogged the exchanges."

"But Brazilian coffee exports are again improving, as well as exports of Brazilian cotton to Britain. There has been a recent look-up in purchases of Brazilian bonds which at current levels may easily be profitable to courageous buyers who have confidence in South America's eventual recovery."

Leopoldina Railway Company

At the annual meeting of the Leopoldina Railway Company last Wednesday the chairman Bury said that the Cantareira Company were negotiating for a fifty per cent increase in fares against which would be apportioned ten per cent of the gross receipts for the purchase of new equipment.

The company's services", he continued, "should be on a more economical basis thereafter, serving to cover debenture interest with possibly a residue for the shares. However, the company is awaiting pending elections for the President of the State of Rio de Janeiro. We are informed that we have influential supporters who recognize the justice of the company's claim".

The report and accounts were adopted.

Free Exchange Market

In the past fortnight, cables received by private interests in London have indicated that conditions on the free exchange market in Brazil are very uncertain and the "reimposition of exchange control by the Banco do Brasil casts doubts on the possibility of marking effective the commercial payments agreement with Britain", the Financial Times stated in an article on Saturday last.

The paper adds: "It is hoped that an official announcement will be made shortly clarifying the position".

International Chamber of Commerce

After drafting a resolution recommending the immediate stabilization of currencies, without waiting for a rise in price levels, as a means of improving world trade, the congress of the International Chamber of Commerce closed in Paris, last Saturday.

In other resolutions the Congress urged the settle-

FOR A
LONG, COOL
DRINK

WHITE HORSE
WHISKY
CAVALLO BRANCO

ment of internal and international debts and the balancing of governmental budgets.

Berlin was chosen as the seat of the congress of 1937.

Pan-American Medical Association

The "floating congress" of the Pan-American Medical Association, including three hundred physician and surgeons from the United States sailed early last Saturday on board the "Queen of Bermuda" for Rio de Janeiro. Many noted Central and South American medical men will join the cruise enroute to the Brazilian capital where conferences will be held and visits made to the most important Brazilian medical centers.

The activities of the congress during the voyage will be divided into seventeen sections representing all branches of medicine.

The purpose of the congress was announced as being "to blend the best practical medical thought with the cultural influences of international contacts and at the same time provide really worthwhile travel experience".

The New York coffee market will be closed on Saturdays throughout the summer, it was announced on Saturday.



FINLAND SOUTH AMERICA LINE

SUOMEN ETELA-AMERIKAN LINJA

FORTNIGHTLY SAILINGS FROM SANTOS, RIO DE JANEIRO AND VICTORIA DIRECT TO POLAND (GDYNIA), DANZIG & FINLAND.

Next sailings:

	From SANTOS	From RIO	From VICTORIA
S/S "HERAKLES"	July 11	July 13	July 15
S/S "EQUATOR"	July 25	July 27	July 29

AGENTS: RIO DE JANEIRO — WILSON, SONS & Co. LTD. — AV. RIO BRANCO, 37 — Tel. 23-1532
SANTOS — FINLAND SOUTH AMERICA LINE — R. 15 NOVEMBRO 183 — TEL. 5.379
VICTORIA — CARL BOLL — CAIXA POSTAL 23.

LONDON FINANCIAL POSITION

28th. June, 1935.

Activity in new capital issues is still the outstanding feature of the financial world, and the offers provide plenty of scope for investors. Recently the latter were invited to subscribe for English municipal loans bearing 3% and offered at a little below par, and for the most part such issues were largely oversubscribed. A more important operation is a £8,000,000 loan for the New Zealand Government, which will bear 3% interest and will be offered at 98½, primarily to holders of a 5% stock, the outstanding amount of which is about £10,000,000. The latter will be repaid at par on October 1st next. Quite a number of industrial issues have also been made, and some of these been introduced to the market without the usual prospectus, much to the dissatisfaction of some people. The latest instance related to the 10s. shares of the Bristol Aeroplane Company. A Stock Exchange firm acquired a parcel at 37s.6d. each, but the opening market price was about 54s. and very quickly the shares were changing hands up to 58s. It is considered that such episodes tend to create an impression in the minds of investors that somebody makes an unduly large profit at the expense of the public. One trouble is, however, that there are people willing to buy shares at well above the par value and above that which a Stock Exchange firm paid. There are also occasional mining issues some of which have been almost phe-

nomenally successful. Altogether considerable activity is evident in the financial world. To some extent perhaps the new issues are being rushed out before the holiday season starts.

The closing days of June witnessed some pressure for money, as usual at the end of a half year, but it is expected that rates will be easier with the advent of July, and certainly there is no reason to expect a reaction in gilt-edged and other investment securities through dearer money. The need for currency stabilisation is still being urged, and perhaps that stage is a bit nearer. There is now less excitement in the foreign exchanges, but according to one authority the late scare as to the stability of gold currencies caused a total loss of gold among the European banks of approximately £221,000,000 between the end of March and the end of May. Of this amount £75,000,000 was sent to America, but a considerable portion apparently went into private hoards. The Dutch bank rate has been reduced from 5 to 4% and Switzerland is reported to be getting back gold, while with a measure of stability in the French franc and no further political or economic crisis in France the general situation in these respects is apparently better.

The new issue activity has had no adverse effect upon general business in the London Stock Exchange, and the past week has witnessed continued activity and strength in the leading Industrial Ordinary shares, many of which have reached high record prices. The continued buying of these is based on the expectation of a further im-



MUNSON SS. LINE

The only North - American Luxurious Liners
— on the "BRAZIL - NEW YORK" route —

21 Thousand Tons each — First and Tourist Class Accommodation — Special prices
for TRIANGULAR VOYAGES "RIO-NEW YORK-EUROPE-RIO" or
"RIO-EUROPE-NEW YORK-RIO"

SAILINGS FROM RIO:—	}	To New York		To River Plate	
		AMERICAN LEGION	July 18	July	19
		WESTERN WORLD	Aug. 1	Aug.	2
		SOUTHERN CROSS	Aug. 15		

These modern liners are newly reconditioned and renovated

FIRST CLASS	FARES	TOURIST CLASS	
RIO — NEW YORK	\$ 250,00	RIO — NEW YORK	\$ 135,00
ROUND TRIP	\$ 415,00	ROUND TRIP	\$ 243,00
ROUND TRIP IN 86 DAYS	\$ 355,00		

FOR RATES & FURTHER INFORMATION The Federal Express Co.
RIO DE JANEIRO — SANTOS — SÃO PAULO

provement in trade, which will spell increased profits, if not increased dividends, but it is to be feared that the pace is too rapid, and that benefits to come have been too liberally discounted. Undoubtedly there is a very optimistic feeling regarding the future generally, and perhaps as a consequence there is a disposition to ignore the factor of European politics. The feeling has been helped by the Naval pact with Germany, but it is to be noted that no success attended the efforts of Great Britain to establish better relations between Italy and Abyssinia, and it is feared that those two countries will be at war with each other by the autumn.

Various indications have appeared lately of improved economic conditions in the principal South American countries. The Department of Overseas Trade here has issued the report of the Commercial Counsellor at the British Embassy at Buenos Aires, which states that last year marked the emergence of the Argentine Republic from the trough of the depression in which she had been engulfed since the collapse of the world's economic structure. Statistics are given of the trade between Argentina and the United Kingdom, the opinion being expressed that as the balance has once again moved in favour of Argentina there should be a further increase in 1935 in Argentine purchases of United Kingdom products. At the meeting of the Brazilian Traction Light & Power Company in Toronto, the chairman referred to the continuance of satisfactory internal conditions in Brazil, and to the growing importance of the country's exports of cotton and fruit, especially the former. It is evident also that conditions in Mexico have undergone a substantial improvement, though the English-owned Mexican Railway Company has to contend with extravagant demands by the labour party, demands which for the most part have to be conceded. For example, the settlement of a strike on the system involved the concession of one half the present net earnings, viz: — 50,000 pesos a month. Fortunately traffics are showing a satisfactory improvement. Brazilian Government bonds are still a rather unsatisfactory market, and there has been no improvement in the railway stocks. Argentine Rails, on the other hand, have shown considerable strength, especially the debenture

issues covered by the Buenos Aires and Pacific moratorium, though this has been extended for another year.

The price of silver has relapse rather sharply on sales by speculators, mostly in the Far East, who appear to have been disappointed with the absence of any fresh development in America favourable to the white metal.

The output of rayon in this country during May reached a new high record. The output of steel is also increasing, and the country's general trade is quite satisfactory. It is expected that scheme for the electrification of part of London's suburban railway service will be followed by similar projects in some of the principal provincial centres.

"QUEEN OF BERMUDA"

It is announced that this magnificent vessel of the Furness-Bermuda Line (Messrs. Furness, Withy & Co., Ltd., London) is shortly visiting South American waters.

She has been chartered by Messrs. Thomas Cook & Son for the Pan America Medical Association's summer cruise, and left New York on June 29th. for Nassau, Kingston, Curaçao, Rio de Janeiro and Santos. She is due to reach Rio on July 14th. and Santos on July 18th. After a stay of two days at Santos she will return to New York via Porto Rico and Trinidad.

Specially built for the tourist traffic she maintains, with her sister ship the "MONARCH OF BERMUDA", a bi-weekly service between Bermuda and New York.

Originality marks this beautiful liner, from her Cinema Room to the Silver Lagoon which opens on the Mosaic Swimming pool. The lounge appropriately called the Forum is 22 feet in height, and is panelled in honey golden sycamore, which in the soft glow of the indirect lighting produces an indescribably lovely effect.

All creature comforts known to modern ships are here in abundance, Each stateroom has a full bathroom or shower and toilet. Electric lifts, a glass enclosed promenade for brisk weather, a gymnasium, loud speakers in all public rooms, hot and cold fresh water throughout the ship, all con-

The City of Santos Improvements Company, Limited

CAIXA 4 — SANTOS — ESTADO DE SÃO PAULO

GAS DEPARTMENT. Special coke and tar produced by the continuous carbonization process: Also soft pitch for waterproofing purposes, crude benzol and oils for the manufacture of disinfectants.

WATER DEPARTMENT. — Distribution on the constant supply system. Special cheap rates for industrial supplies. Ships supplied with water of guaranteed purity, at the rate of 150 tons per hour if required.

ELECTRICITY DEPARTMENT. — Installations of any magnitude for Light and Power. Cheap power for longhour consumers. Motor repairs.

TRAMWAYS DEPARTMENT. — Seventy kilometres of rapid electric service. Season tickets with non-stop service. Special terms for large parties, parcel delivery; service to all points. Electric transport of goods and building material at cheap rates. Goods from interior should be despatched "Companhia City, Desvio Saboc".

MOTOR OMNIBUS SERVICES: Town Avenues and Beach.

Telegraphic Address "CIDADE" — SANTOS

tribute to your sense of being royally comfortable on the "QUEEN OF BERMUDA".

The cocktail bar fancifully called the Nubian because of its black lacquer walls is decidedly oriental in mood. The twin cafés "ISIS" and "OSIRIS" are warmly gay in colour. Bay windows and a massive-stone fireplace lend the smoking room an air of being in the grand manner.

The whole ship has been planned not only in decorative, unique units, but as a magnificent whole.

The vessel is installed with High Powered quadruple screw turbo-electric machinery. Length 580 feet, Breadth 77 feet. Gross Register 22,480 tons and displacement 28,060 tons.

LONDON PRODUCE NOTES

London, June 28, 1935.

There has been no outstanding event on the London Produce markets this week.

SUGAR — A little brighter tone, however, ruled for sugar, encouraged by a larger offtake of refined sorts, but buyers continue to adopt a hand to mouth policy, which gave no inducement to refiners to broaden the sphere of their activities. They have, however, taken during the week about 40,000 tons Cubas and preferential raws, afloat and July, at 4/7 ½d. per cwt. The futures market also responded to the better conditions and values improved 1½d. per cwt. to 4/7 ½d. for August and Decr. deliveries and 4/10 ¾d. for May (1936) delivery.

RUBBER — An easier tendency developed in

the market for plantation rubber, chiefly due to a slackening of the demand from America and the liquidation of the July position. Latterly, however, the Eastern market became steadier and the price of smoked sheet, spot, in London recovered to 5 15/16d. per lb. According to the Dept. of Commerce Washington, the production of motor vehicles in the U. S. A. during the first five months of this year amounted to 1,905,579 units, which compares with 1,406,363 during the same period last year and is the highest since 1929.

COFFEE — Buyers showed very little interest in the offerings at the coffee auctions, and with drawals were frequent. Jamaica sorts sold best, and mountain grown, bold dull greenish, realised up to 215/6 per cwt.

COCOA — Accra cocoa has been very quiet, and prices have receded 3d. to 21/9 per 50 kilos for good fermented, old and new crops, c. i. f. Continent.

TEA — Indian teas met a fairly good general demand at steady prices, while Ceylon kinds up to 1/- per lb. met a firm market, while broken Orange Pekoes between ls. 1d. and ls. 5d. were of ten farthing to halfpenny dearer. Pekoes, suitable for export, however, were rather easier.

JUTE — The Indian Government is issuing the acreage forecast spread over five days, and the first, covering six districts (equal to about a fifth of the total area under jute) was issued this afternoon. This gives an acreage of 370,000 compared with last year's revised figures for the same districts of 513,000 acres. The total acreage for all districts last year was 2,497,000. The reduction



Furness Prince Line

NEW YORK-SOUTH AMERICA

LUXURIOUS ACCOMODATION — FIRST CLASS PASSENGERS ONLY

RIO — NEW YORK 13 DAYS

WESTERN PRINCE

WILL SAIL JULY 11th,
FOR TRINIDAD AND NEW YORK

SOUTHERN PRINCE

DUE FROM NEW YORK JULY 12th,
FOR SANTOS, MONTEVIDEO & BUENOS AIRES

Round trip rates for limited periods considerably reduced.

TRIANGULAR TOURS — NEW YORK — EUROPE — BRAZIL — AT SPECIAL RATES

Houlder Brothers & Co. (Brazil) Ltd.

Rua do Comércio, 35 — SANTOS

Avenida Rio Branco, 63-67, 1st Floor — RIO DE JANEIRO

2001 & 3728

Tel. 23-0754 and 23-0588

GULF SOUTH AMERICA LINE

(SWEDISH AMERICA MEXICO LINE)
 Managing Operators:—
 PLANT SHIPPING COMPANY INC.
 Whitney Building, New Orleans, U. S. A.

Sailings for New Orleans

BONITA

Leads in Santos July 13th.
 Rio July 20th. and
 Victoria July 22nd.

GENERAL AGENTS FOR BRAZIL

THE FEDERAL EXPRESS Co.

shown for the six districts is equal to 27.875 per cent against the restriction of 31.25 per cent aimed at by the Government. Estimates for the other areas are awaited with interest. The market remained steady on receipt of these figures.

TIMBER — A moderate demand was reported for mahogany logs, sales being chiefly confined to wood which remained unsold at the recent auction. Supplies of mahogany in first hands remains quite moderate, the only augmentations at the moment having been the consignment of African Secondee and a few logs of Sapele and Benin that came forward ex sundry ships. As compared with the same time last year, the landed hardwoods in stock by the Port authorities both sawn and hewn, show little, if any increase.

FRUIT — Oranges were in quieter demand with South African (Naval) 96/126, quoted 13s. to 16s.; 150/176, 17s. to 22s.6d.; seedlings, 126/176, 14s. to 17s.; 200, 17s.6d. to 18s.6d.; Brazilian, Navels, 80/126, 10s. to 15s.; 150/176, 15s. to 18s.; 200/252, 20s. to 23s.; 288/324, 20s. to 22s. Grapefruit had a good demand at firm rates; South African 13s. to 21s.6d.; Brazilian 14s. to 20s.; Californian 15s. to 22s. per box. Bananas; Canarys were lower at 8s. to 12s. per crate; Jamaica 8d. to 10d., and Brazilian 7½d. to 9½d. per dozen. Imports from Brazil last week included 71,000 boxes of oranges 38,000 bunches of bananas and 3,000 boxes of grapefruit.

HIDES — There has been a little more business done in Brazils at the expense of a small decline. Salted Mendes firsts made 3 7/8d., and Barretos 3 1/2d. African hides were generally unchanged. Dry River Plates were quiet and the turn easier with B. A. Americanos at 5¼d., B. A. Anchos at 4 7/8d., B. A. Inservibles at 3 3/4d. and Cuyabanos at 5 5/16d. to 5 9/16d. for Specials on L. W. terms.

WEEKLY COCOA MARKET REVIEW

Bahia, 29th of June, 1935

STATISTICS:

	Bags
Receipts from the 1st until the 27th inst:	104,667
Shipments dt° dt°	85,799
Stocks on the 27th inst.	34,471

The heavy increase in receipts is due to two steamers, the s/s "Fredhem" and s/s "Finn", in the meantime having arrived here from Ilhéos. The s/s "Fredhem" has already sailed for New York, whereas the s/s "Finn" will leave here about the 1st or 2nd of July.

CROP & WEATHER: — Weather conditions during the week under review were unchanged with temporary rains. We estimate July receipts at about 200,000 bags, the largest part of which will be immediately shipped.

News received from the interior indicate that receipts until September will be good, however, in view of the large midcrop, are expected to diminish from October onwards, inasmuch as flourations from April until June have been very small.

MARKET & PRICES: — The movement during the week under review was very quiet owing to reasons already given in our last report.

Owing to disparity between our markets, bids both from Europe and New York generally did not lead to business.

We quote to-day on Superior c.&f.

New work July/Sept. shipment..	4 ½ c.
Oct./Dec. shipment..	4.70 c.
A'dam options July/Sept. shipment..	sh.21/9
Oct./Dec. shipment..	sh.22/3
c.i.f. B. Aires July/Aug. shipment..	m\$ n - 37.50

EXCHANGE: — Very unsettled, closing paralysed to day at the following rates:

Bank rate £ Rs. 92\$000	\$ Rs. 18\$620
Export rate (Official £ Rs. 57\$430	\$ Rs. 11\$570
(free £ Rs. 91\$000	\$ Rs. 18\$400

CORREIA RIBEIRO & CIA.



CITY OF SÃO PAULO FOR REAL ESTATE INVESTMENT

Reasons Why —

if you are interested in land in São Paulo
You should buy it from

the COMPANHIA CITY:

TO MANUFACTURERS:

Cheap Power

Easy transport (tramway and railway sidings)

•Within the limits of the suburban

zone of the city of São Paulo

Exceptionally well located sites for Industrial purposes in Lapa, Pinheiros etc.

TO PRIVATE INVESTORS:

The BEST investment in any country today is LAND

The BEST country in which to buy LAND is BRAZIL

The BEST locality in all Brazil is SÃO PAULO

THE COMPANHIA CITY HAS THE BEST SITES IN SÃO PAULO

The most up to date and model residential districts
such as Jardim America, Pacaembú, Anhangabá, etc.

TO THOSE WISHING TO BUILD:

Immediate financing, independent of total payment of the
land, and with the greatest facilities for amortization

The population of the CITY OF SÃO PAULO is constantly increasing and São Paulo Lands are constantly increasing in value

Statistics of Population of the City of São Paulo:

1872	31.385
1890	64.934
1900	239.820
1920	579.033
1934	1.060.120

CITY OF SÃO PAULO IMPROVEMENTS & FREEHOLD LAND COMPANY, LIMITED



The largest organization dealing in real estate and town-planning in South America, established in São Paulo since 1912.

50, LIBERO BADARÓ — SÃO PAULO

Head Office: BROAD STREET PLACE — LONDON, E. C. 2

COCOA

CEMENT

Movement of Cocoa at the Port of Bahia and Ilhéus, during month May, 1935.

Statistics of Corrêa Ribeiro & Co.
(In Bags 60 Kilos)

Exported	6.300
Received	14.794
Stock	15.603

Shippers:

Wildberger & Co.	2.550
Inst. de Cacau da Bahia S/A	125
Corrêa Ribeiro & Co.	2.025
Hugo Kaufmann & Co.	1.100
Tude, Irmão & Co.	50
Cia. Bras. Exportadora	150

TOTAL

Ilhéus

Hugo Kaufmann & Co.	200
Henrique Wettstein	100

TOTAL

Destination

Hamburg	2.000
Amsterdam	400
Gdynia	250
P. Colombia	900
Durban	25
Genoa	775
Bilbao	50
Antwerp	300
Havre	425
S. Francisco	450
Dantzig	50
Coltenburg	100
Montreal	150
Recife	100
Itajahy	25

TOTAL

Ilhéus

Santos	200
Rio de Janeiro	100

TOTAL

WILEMAN'S BRAZILIAN REVIEW

Circulates in 33 different countries

THE STANDARD PUBLICATION FOR BRAZILIAN
STATISTICS

quoted by Government Departments
the world over.

BRAZILIAN IMPORTS — APRIL 1935

Origin	Tons	Val. cif
Germany	4.086	566.775
Belgium	873	117.523
Canada	51	11.148
Great Britain	542	75.965
Holland	337	42.790
Sweden	84	9.964
Uruguay	8	3.533
TOTAL	5.981	827.698

Equivalent in £ gold

Destination

Pará	607	90.528
Maranhão	349	68.652
Fortaleza	50	8.331
Cambedello	99	18.263
Recife	1.163	140.501
Maceió	8	4.899
Aracajú	126	25.594
Bahia	867	102.793
Rio de Janeiro	1.391	165.147
São Francisco	109	20.996
Florlanopolis	168	34.442
Rio Grande	191	27.610
Pelotas	25	3.982
Porto Alegre	820	103.427
Livramento	8	3.533
TOTAL	5.981	827.698

IMPORTS BY ORIGIN — JANUARY TO APRIL 1935
AND 1934

	TONS		
	1935	1934	1935
Germany	16.145	675	+ 15.470
Belgium	12.550	2.906	+ 9.644
Denmark	—	997	— 997
United States	117	524	— 407
Great Britain	4.088	11.387	— 7.299
Holland	1.687	775	+ 912
Italy	25	891	— 866
Sweden	1.585	5.278	— 3.693
Sundries	779	300	+ 479
	36.976	23.733	+ 13.243

Years	Tons	Value cif	£ gold
1931	56.355	8.253.844\$	152,048
1932	39.286	5.394.423\$	69,712
1933	63.819	6.189.991\$	95,632
1934	23.733	2.851.861\$	29,915
1935	36.976	4.500.291\$	36,853

CHEMICAL PRODUCTS

BRAZILIAN IMPORTS — MARCH 1935

Commodities	Kilog.	£
Acetic acid	233	38
Citric acid	37,994	1,755
Muriatic or hydrochloric acid	5,017	100
Nitric acid	13,367	432
Boric acid	14,245	250
Organic acids not specified	49,372	3,129
Sulphuric acid	10,423	90
Tartaric acid	64,657	3,834
Tannic acid	16,213	1,894
Acids unenumerated	30,723	1,230
Chemical manures	1,204,593	6,493
Mineral waters for medicinal use	4,991	500
Cocaine	6	272
Codeine	8	172
Cafelne	823	324
Morfine	8	113
Quinine	2,121	6,430
Other alkaloids and salts thereof	491	996
Liquid ammonia	5,069	449
Alcohol and ether for scientific use	3,982	285
Eazine	2,324	63
Bicarbonate of soda	264,136	2,263
Carbonate of ammonia	16,100	206
Borax	173,463	1,533
Carbide of calcium	10	—
Capsules, pills, globules, etc. (medicinal)	4,500	22,318
Chlorate of potassium and sodium	216,833	5,589
Chlorides and other alkaloids salts not specified for scientific use	6,490	969
Barium chloride for industrial use	270	10
Chlorates for industrial use, not specified	89,690	1,344
Aggressive chemical compositions and their ingredients	440,332	3,811
Chloride of lime	88,609	1,439
Ethyl chloride	43	53
Medicinal elixirs and liquors	3,720	1,343
Medicinal plasters	4,755	1,226
Medicinal ampoules	12,596	43,945
Medicinal drops	2,766	6,952
Glycerine	31,252	1,422
Yodide of potassium	2,136	822
Lysol, creoline and similar preparations	48,024	2,767
Colloidal metals and metalloids	58,051	329
Precious metals for use in chemical preparations	153	326
Cod liver oil and emulsions thereof	3,758	143
Other medicinal oils and emulsions	3,332	865
Oxides for scientific use, not specified	2,572	540
Oxides for industrial use not specified	26,500	1,928
Caustic potash	13,059	398
Pharmaceutical and medicinal preparations, not specified	31,623	29,842
Medicinal soap	273	59
Caustic soda	5,063,990	55,036
Copper sulphate	79,335	855

SÃO PAULO RAILWAY

THE SAFE WAY FROM SANTOS TO THE INTERIOR

FREQUENT — RAPID — ECONOMIC

PASSENGER

GOODS

PARCELS

SERVICES

SPECIAL FACILITIES FOR TOURISTS

Door to Door Collections
and Deliveries of Luggage, Parcels
and Merchandise

INFORMATION:—

S.P.R. Estação da Luz, Caixa "C"

SÃO PAULO

Sodium sulphate	1,056,764	2,345
Magnesium sulphate	253,994	1,005
Vaseline	66,593	1,895
Sulphates not specified	179,580	1,442
Sulphites, hyposulphites, sulphides and other like salts for scientific use, not specified	20,722	354
Sulphites, hyposulphites, sulphides and other like salts for industrial use, not, specified	487,763	3,725
Various medicinal solutions	11,450	3,154
Vaccines, and serums in ampoules or tubes	329,639	1,868
Chemical products for scientific use not specified	103,398	28,201
Chemical products for industrial use not specified	1,658,742	33,893
Chemical products for textile industries	1,426	161
TOTAL IMPORTS	12,325,162	275,225

SÃO PAULO RAILWAY COMPANY

Estimated Weekly Traffic Receipts

YEAR	Week ended	Receipts of week			Total to date
		Currency	Exchange	Sterling	
1934	June 24th.	1,867,165\$510	58\$592 or 3d. 11/32	31,832-9-9	780,137-4-1
1935	June 23rd.	2,400,000\$000	58\$071 or 1d. 17/128	41,328-14-4	865,761-1-9
Increase		532,834\$490	Od. 19/128	9,996-4-7	85,326-17-8
Decrease					

EXCHANGE

OFFICIAL MARKET RATES (Deposits)

Rio de Janeiro	1935	
	5th. July	28th. June
London	58\$347	58\$236
New York	11\$800	11\$770
Paris	\$780	\$780
Berlin	4\$755	4\$760
Brussels	1\$970	2\$000
Buenos Aires	3\$410	3\$430
Lisbon	\$525	\$525
Madrid	1\$615	1\$615
Milan	\$975	\$975
Montevideo	5\$350	5\$350
Zurich	3\$860	3\$860

FREE MARKET RATES (Bank Drafts)

Rio de Janeiro	1935	
	5th. July	28th. June
London	90\$800	91\$500
New York	18\$350	18\$500
Paris	1\$214	1\$228
Berlin	7\$390	7\$480
Brussels	3\$095	3\$135
Buenos Aires	4\$870	4\$905
Lisbon	\$826	\$832
Madrid	2\$515	2\$545
Milan	1\$520	1\$535
Montevideo	7\$445	7\$440
Zurich	6\$005	6\$075

LONDON RATES

London on:—		1935	
		5th. July	28th. June
New York	Dollar	4.94½	4.94½
Paris	Franc	74.75	74.62
Berlin	Mark	12.27	12.23
Amsterdam	Florin	7.26	7.24
Brussels	Belga	29.30	29.22
Berne	Franc	15.11	15.07
Genoa	Lira	59.75	59.62
Lisbon	Escudo	110. ⅞	110. ⅞
Madrid	Peseta	36.12	36. ⅞

Oswaldo Aragão da Silveira

Official Exchange & Share Broker

G. FRASER
E. SAUTTER
W. DIXON

RUA DA CANDELARIA, 28-2.º andar

Tels.: 23-1033—1034 23-5630—5995

P. O. Box 210

Telegraphic Address "FRASER"

RIO DE JANEIRO

Casa Bancaria Moneró

AV. RIO BRANCO, 49 — RIO — Phones 23 (0074)
(0174)

The most important concern for exchange of
any currency.

Drafts at the most favourable rates on all countries.

Correspondents throughout the world.

F. MONERÓ & CIA. LTDA.

cables: MONERO Peterson Int. Code 3rd. ed.

MONEY MARKET

Discount Rates

	1935	
	5th. July	28th. June
Bank of England	2%	2%
" France	5%	5%
" Italy	3½%	3½%
" Spain	6%	6%
" Germany	4%	4%
London Market	3/16%	13/16%
N/York Market	1/8%	1/8%

RATES FOR NOTES

	1935	
	5th. July	28th. June
£ Sterling	93.000	93.000
\$ U. S. A.	18.700	18.800
\$ Canada	18.500	18.600
Franc (France)	1.240	1.240
Franc (Belgium)	640	640
Franc (Swiss)	6.050	6.100
Mark (German)	7.000	7.000
Mark (Finnish)	400	400
Crown (Czecho-Slovak.)	830	840
Crown (Denmark)	4.100	4.100
Crown (Norway)	4.600	4.650
Crown (Sweden)	4.700	4.750
Dinar (Serbia)	430	430
Escudo (Portugal)	880	870
Florin (Holland)	12.600	12.500
Lel (Rumania)	150	150
Lira (Italy)	1.500	1.500
Peseta (Spain)	2.570	2.600
Peso (Argentina)	4.900	4.950
Peso (Bolivia)	930	930
Peso (Chile)	700	720
Peso (Paraguay)	100	100
Peso (Uruguay)	7.450	7.500

FREE MARKET OPENING RATES OF BANK OF LONDON & SOUTH AMERICA LTD.

	£s	Dollars
June 29th	91\$500	18\$500
July 1st		Holiday
" 2nd	91\$000	18\$420
" 3rd	90\$000	18\$220
" 4th	89\$700	18\$140
" 5th	90\$800	18\$350

American Republics Line

OPERATED BY

C. H. SPRAGUE & SON, Inc.

BOSTON, Mass.

for the

United States Shipping Board

Regular Cargo Steamers Service

between

THE ATLANTIC COAST PORTS
of the United States

BRAZIL and the RIVER PLATE

General Agents for Brazil

American Steamship Agencies Co. Inc.

Rua 15 de Novembro, 176
Santos

Rua da Quitanda, 202
Rio de Janeiro

Cable Address: "Amagencies"

DELTA LINE

"Floating Bungalows"

Owned and Operated by

Mississippi Shipping Co. Inc.

RIO to NEW ORLEANS in 18 days
WITH ONE STOP AT VICTORIA

Passengers — Mail — Freight

NEXT SAILINGS:

Southbound

"DELVALLE" July 17, 1935

"DELNORTE" Aug. 7, 1935

Northbound

"DELSUD" July 27, 1935

"DELVALLE" Aug. 17, 1935

For further particulars apply to

American Steamship Agencies Co. Inc.

Rua da Quitanda, 202
RIO DE JANEIRO

Rua 15 de Novembro, 176
SANTOS

Or at our General Passenger Agents

Serviço Int. de Viagens G. BERNSTORFF

THE STOCK MARKET

The Stock Market	1935	1935	1934
London	June 25	July 2	July 2
Brazil Funding 1893 5%.....	88.00	87.00	94.10.0
Ditto, 1914 new	64.10.0	64.15.0	79.00
Conversion, 1910, 4%	15.10.0	14.10.0	17.10.0
Ditto 1908, 5%	—	—	—
Federal District 5%	21.10.0	21.00	34.00
Anglo-South Am. Bk. Ltd. ord.....	0.5.9	0.6.0	0.6.0
Brazilian Traction, ord.....	9.12	9.00	8.75
S. Paulo Coffee Estates Co. Ltd. 7%.....	82.10.0	80.10.0	94.5.0
Cables Wireless Teleg. Co., Ltd.....	6.19.4½	6.19.1½	8.7.3
Western Telegraph Co. Ltd., 4% Dec. Stoc Red.	105.10.0	105.10.0	101.0.0
Brazilian Warrant Agency & Finance Co. Ltd. ord	0.1.9	0.1.9	0.2.6
Rio de Jan. City Imp. Co. Ltd., ord.....	0.9.6	0.9.9	0.13.0
Imperial Chemical Ind. Ltd.....	1.15.7½	1.16.1½	1.15.7½
S. Paulo Railway	52.0.0	51.0.0	74.0.0
Leopoldina Ry. 6.½% Term. Dec. 1933.....	54.0.0	53.0.0	74.0.0
Rio de Janeiro Flour Mills.....	1.15.6	1.14.0	1.15.6
Bank of London & South America.....	4.5.0	4.5.0	4.5.0
Royal Mail	—	—	1.10.0
British War Loan 3.½% 1927-47.....	106.0.0	106.15.0	103.5.0
Consols 2.½%	85.0.0	85.15.0	79.17.6

MARKET QUOTATIONS RIO DE JANEIRO STOCK (OFFERS) AT THE RIO STOCK EXCHANGE

Tuesday 2nd July, 1935		
Uniformisadas.	795\$	790\$
Sundry issues 1:000\$ nom.	783\$	780\$
Ditto to bearer	805\$	804\$
Ferrovias Rail- way Bonds	988\$	—
Treasury Obliga- tion (1921)	998\$	990\$

Ditto 1932)	—	1:015\$
Ditto (1930)	988\$	980\$
Rodovias, nom.	750\$	710\$
State of Rio 100\$000, bearer.	—	103\$
Ditto, 500\$ 6%	350\$	—
Rio 500\$, bearer 8%	950\$	—
Rio, 1:000\$, 8%.	905\$	—
O. Minas Gerais, 9%	950\$	949\$
Minas Geraes, 1:000\$, 7%.	795\$	790\$
Ditto, 5% nom.	—	700\$
Ditto 1:000\$, 5% bearer	—	660\$
Ditto, 200\$, 1934.	194\$	193\$

Municipal Loan 6% 1906, bearer	155\$	—
Ditto, 1904, £ 20, bearer	448\$	440\$
Ditto, 1904, nom.	447\$	440\$
Ditto, 5% dec. 1914	—	150\$
Ditto, 1917	148\$	—
Ditto, 6%, 1920	148\$	145\$
Ditto, dec. 1933, 7%	194\$	193\$
Ditto, dec. 1.535, 7%	173\$	—
Ditto, 1931 (c/j)	188\$	186\$
Ditto, dec. 1.550	—	169\$
Petropolis, 7%	190\$	180\$
Pelotas, 1:000\$	800\$	500\$
Ditto, dec. 3.264.	169\$	168\$
Ditto, dec. 1.999	170\$	168\$
Espirito Santo 6%.	680\$	—
Ditto, 8%	800\$	790\$
Ditto dec. 2.093 8% bearer	194\$	192\$
Ditto, dec. 1.948, 7%	177\$	176\$
Bello Horizonte	800\$	—
Rio Grande do Sul 500\$, 8%	510\$	500\$
Ditto, 1:000\$, 8%	900\$	—

Banks:—

Brazil.	394\$	392\$
Commercio c/d	205\$	190\$
Mercantl	485\$	480\$
Portuguez, bearer	—	120\$
Ditto, nom.	—	—
Bda Vista	—	570\$
Regional	—	165\$

Railways:—

M. S. Jeronymo	—	122\$
J. Botânico (integ.)	—	132\$
Ditto (c/ 60%)	—	79\$
Victoria a Minas.	—	10\$

Insurance:—

Argos Fluminense	—	2:750\$
Sagres.	400\$	302\$

Confiança	—	215\$
Brazil (70%)	—	42\$
Integridade	205\$	—
Previdente	—	2:600\$
Continental	100\$	—
Garantia	105\$	90\$
Guanabara	85\$	81\$
U. dos Proprietarios	—	420\$
Varegista	1:700\$	1:200\$
Textiles:—		
Alliança	—	105\$
Corcovado	73\$	70\$
America Fabril	210\$	200\$
Brasil Industrial	490\$	480\$
Progresso Industrial	230\$	215\$
Petropolitana	160\$	140\$
Manufatura	—	205\$
Nova America	300\$	260\$
Industrial Campista	—	—
S. Pedro de Alcant.	450\$	410\$
Esperança	—	207\$
Taubaté	700\$	600\$
Confiança	32\$	20\$

Sundry:—		
Holerith	1:285\$	1:280\$
Docas de Santos,	243\$	240\$
bearer	—	—
Ditto, nom.	—	2\$
Docas da Bahia	—	—
C. Brahma	—	410\$
Sul Mineira de Ele-	210\$	199\$
ctricidade	60\$	50\$
Caxambú	—	—
Sul America Capi-	—	310\$
talização	—	350\$
Usinas Sta. Luzia	—	—
Palace Hotel	750\$	—
Seguro Sul America	880\$	—
Cia. Brasileira Im-	—	—
moveis e Cons-	170\$	—
truções	—	—
Radio Telephoni-	—	—
ca Brasileira	150\$	—
B. Immobiliaria	—	—
de Construção	160\$	—
A. Borracha	70\$	—

Braina Petroleo	500\$	—
Agric. Juiz de Fora	—	200\$
Debentures:—		
Cervejaria Brahma	1:050\$	1:040\$
Docas de Santos	189\$	—
Manufatura	210\$	207\$
Mercado Municipal	207\$	206\$
Antarcilca Paulista	193\$	186\$
Industr. Campista	—	130\$
Usinas Nacionaes	212\$	210\$
Santa Helena	—	165\$
Federal Fundição	—	180\$
Nova America	—	1:045\$
Fluminense F. Club	70\$	69\$
Tecidos Corcovado	—	180\$
Tecidos Alliança	—	155\$
Edificadora	150\$	—
Bellas Artes	—	220\$
Docas da Bahia	50\$	20\$
Mayrink Veiga	1:020\$	1:005\$
Cotonificio Gavea	210\$	200\$
Carris Porto Alegre	—	204\$
Jornal do Brasil	—	200\$
Progresso Industrial	188\$	185\$

COFFEE

COFFEE PRICES CURRENT

RIO DE JANEIRO, 5th. July, 1935.

COFFEE SERVICE	29	1	2	3	4	5
Rio spot N. 7	11\$400	11\$700	11\$700	11\$800	11\$900	11\$800
Rio futures	July	Holiday	11\$525	11\$575	11\$550	11\$700
	August	"	11\$500	11\$575	11\$550	11\$725
	September	"	11\$550	11\$575	11\$600	11\$725
	October	"	11\$525	11\$600	11\$600	11\$725
	November	"	11\$500	11\$575	11\$575	11\$725
	December	"	11\$525	11\$550	11\$500	11\$700
	Sales	1.000	NIL	1.500	5.000	2.000
Santos spot N. 4	Holiday	16\$200	16\$200	16\$200	16\$200	16\$300
Santos futures	July	"	15\$475	15\$450	15\$550	15\$550
	August	"	15\$500	15\$425	15\$550	15\$625
	September	"	15\$550	15\$600	15\$650	15\$750
	October	"	15\$525	15\$600	15\$650	15\$750
	November	"	15\$500	15\$575	15\$650	15\$725
	December	"	15\$600	15\$675	15\$700	15\$775
	Sales	"	2.000	13.500	2.500	1.500
New York Rio spot N. 6	"	7 5/8	7 5/8	7 5/8	Holiday	7 5/8
New York Rio " N. 7	"	6 7/8	6 7/8	6 7/8	"	6 7/8
" Santos " N. 4	"	8	8	8	"	8
" Santos " N. 7	"	7 1/2	7 1/2	7 1/2	"	7 1/2
" futures July	"	5.09	5.12	5.10	"	5.14
	September	"	5.23	5.24	"	5.25
	December	"	5.33	5.35	"	5.35
	March	"	5.42	5.43	"	4.45
	Sales	"	5.000	5.000	5.000	5.000
Havre futures	July	108 1/4	109 1/4	109 3/4	111 3/4	113
	September	112 1/4	113	113 1/4	114 1/4	115 1/2
	December	114 3/4	115 1/4	115 1/2	116 1/2	117 1/2
	March	110 1/4	116 1/2	117	118	119 1/2
	Sales	1.000	3.000	3.000	2.000	2.000
Hamburg futures	July	32	32	32	32	31
	September	31	31 1/2	31 1/2	31	31
	December	30 1/2	30 1/2	30 1/2	30 1/2	30 1/2
	March	30 1/2	30 1/2	30 1/2	30 1/2	30 1/2
	Sales	NIL	NIL	NIL	NIL	NIL

WILEMAN'S BRAZILIAN REVIEW

THE MIRROR OF BRAZILIAN BUSINESS

Subscription abroad £ 3.0.0d.

BRAZIL 100\$000

Payable in advance with order.

THE LEOPOLDINA RAILWAY COMPANY
Estimated Weekly Traffic Receipts

YEAR	WEEK ENDED	RECEIPTS FOR WEEK			TOTAL FROM 1ST JANUARY
		Currency	Exchange	Sterling	
1935	27th. June	1,502,100\$	x	£ x	32,407,000\$
1934	30th. "	1,428,000\$	x	£ x	32,922,000\$
Increase	x x	74,000\$		£	
Decrease	x x	\$		£	515,000\$

COFFEE QUOTATIONS

RIO DE JANEIRO, 1st JULY 1935

Spot	Rio		Santos		New York	
	7s	4s	7s	4s	7s	4s
June 24-1935 . . .	11\$600	16\$300	6. 5/8c	8. 0c	7. 1/2c	
July 1st-1935 . . .	11\$700	16\$200	6. 7/8c	8. 0c	7. 1/2c	
Rise or fall . . .	+\$100	-\$100	+0. 1/4c			

Options	Rio Contract A			Santos Contract A		
	July	Sept.	Dec.	July	Sept.	Dec.
June 24-1935	4.98c	5.13c	5.27c	7.59c	7.68c	7.77c
July 1-1935	5.09c	5.23c	5.33c	7.66c	7.73c	7.80c

NEW YORK COFFEE QUOTATIONS

NEW YORK 6 — Reflecting an improvement in the Brazilian exchange situation coffee futures improved considerably for the close of trading this week on the New York Exchange.
Santos futures gained from 13 to 19 points and Rio de Janeiro futures from 14 to seventeen.
The spot market was quiet and unchanged.

COFFEE STATISTICS
ENTRIES

Week ending June, 29, 1935 -- In bags of 60 kilos

	FOR THE WEEK ENDED		FOR THE CROP
	June, 29 1935	June, 22 1935	June, 29 1935
RIO:			
By Central and Leopoldina R'y . . .	66,278	49,695	2,434,547
Warehouses	21,850	34,365	685,754
TOTAL	88,128	84,060	3,120,301
Total - Santos	210,141	225,394	9,311,356
TOTAL Rio & Santos	298,269	309,454	12,431,657

The total entries by different S. Paulo Railways for the crop to June, 29, 1935.

	Past Jundiahy	Sorocabana	Total at S. Paulo	Total at Santos
1934/1935	3,381,057	6,047,555	9,428,612	9,311,356

JOHNSON LINE

Rederiaktiebolaget Nordstjernen Stockholm (Sweden)

REGULAR SERVICE BY MOTOR VESSELS from SWEDEN, POLAND, BALTIC PORTS and VICE-VERSA

SAILINGS	For the River Plate	For Sweden and Poland
"Brasil"	—	14th July
"San Francisco"	—	28th. July
"Valparaiso"	—	7th. Aug.
"Argentina"	16th. July	14th. Aug.
"Lima"	—	25th. Aug.
"Pedro Christophersen"	31st. July	6th. Sept.
"Suecia"	14th. Aug.	18th. Sept.

M. V. ARGENTINA

Expected on the 16th July, sails for SANTOS MONTEVIDEO and BUENOS AIRES

M. V. BRASIL

Expected on the 14th July, sails for VICTORIA, SWEDEN and POLAND.
The Vessels dispose of accommodations for limited number of First-class Passengers.

For further particulars apply to the Agents:—
Williams & Co., Pernambuco, P.O. Box 245
Gueudeville & Co., Bahia, P.O. Box 203
Hard, Rand & Co., Victoria, P.O. Box 125
Johnson Lines Agencies, Santos, P.O. Box 404
LUIZ CAMPOS FILHOS & CIA.
Rua 1.º de Março, 117 — Phones 23-2896 & 23-3337

RIO DE JANEIRO

COFFEE LOADED (EMBARQUES)

Week ending June, 29, 1935 — In bags of 60 kilos

	DURING WEEK ENDED		FOR THE CROP
	June, 29 1935	June, 22 1935	June, 29 1935
Rio	60,739	64,491	2,488,448
Santos	221,507	242,604	9,227,135
Total - Rio & Santos	282,246	307,095	11,715,583

SALES OF COFFEE (DECLARED)

Week ending June, 29, 1935 — In bags of 60 kilos

	DURING WEEK ENDED		FOR THE CROP
	June, 29 1935	June, 22 1935	June, 29 1935
Rio	29,785	25,276	1,290,285
Santos	72,000	92,000	4,521,000
TOTAL - Rio & Santos	101,785	117,276	5,811,285

VALUE OF COFFEE CLEARED FOR FOREIGN
PORTS

Week ending June, 29, 1935 — In bags of 60 kilos

PORTS	June 29 1935	June 22 1935	June 29 1935	June 22 1935	CROP TO June, 29, 1935	
	Bags	Bags	£	£	Bags	£
Rio.....	45,783	48,589	43,095	45,736	2376,704	2975,434
Santos.....	262,916	150,624	300,928	173,099	8921,189	13057,412
Total 1934/1935	308,699	199,213	344,023	218,835	11297893	16032846

COFFEE SAILED

Week ending June, 29, 1935 — In bags of 60 kilos

PORTS	United States	Europe & Mediterranean	Coast	River Plate	Cape	Others ports	TOTAL FOR WEEK	CROP TO DATE
Rio....	9,700	35,583	2,400	—	500	—	48,183	2,460,173
Santos	193,638	76,749	25	2,529	—	—	262,941	8,974,049
TOTAL	203,338	112,332	2,425	2,529	500	—	311,124	11,434,222

OUR OWN STOCK

In bags of 60 kilos

RIO STOCK on June, 22, 1935 ..	625,717	
Entries during week ended June, 29, 1935	88,128	
	713,845	
Loaded (Embarques) for week ended June 29, 1935	60,739	
	3,500	
		649,756
STOCK AT RIO on June 29, 1935 ..		
SANTOS STOCK on June, 22, 1935 ..	2,085,663	
Entries, for week ended June, 29, 1935	210,141	
	2,295,804	
Loaded (Embarques) during week ended June, 29, 1935	221,507	
		2,075,807
STOCK AT SANTOS on June, 29, 1935		
STOCK AT RIO AND SANTOS on June, 29, 1935		2,725,563
STOCK AT RIO AND SANTOS on June, 22, 1935		2,711,380

NOTE — In the stock of Rio were included 150 bags, coffee returned.
In the stock of Santos were included 1,510 bags, by D.N.C.

COFFEE

Bahia Stock on 28th June 1935 44,375
Entries during week ending July 5th 1935 6,262

Available 50,637
Clearance during same week:

To U. S. 1,868
to Europe 1,303
to Elsewhere 3,171

Bahia Stock July 5th 1935 47,466

COFFEE EXPORTED FROM BRAZIL
DURING JUNE 1935

IN BAGS OF 60 KILOS EACH

Port of shipment	Abroad	Coastwise	Total
Santos	885,488	206	885,694
Rio de Janeiro	257,716	10,784	268,500
Victoria	102,037	12,795	114,832
Paranaguá	15,795	92	15,887
Bahia	19,853	4,238	24,091
Angra dos Reis	1,788	—	1,788
Recife	2,599	2,220	4,819
Total	1,285,276	30,335	1,315,611

STOCK OF DISPOSABLE COFFEE AT THE
DIFFERENT BRAZILIAN PORTS ON
30th JUNE 1935

IN BAGS OF 60 KILOS EACH

Santos	2,075,325
Rio de Janeiro	649,756
Victoria	297,412
Paranaguá	24,970
Bahia	39,379
Angra dos Reis	30,606
Recife	28,872
Total	3,141,320

5⁰⁰ Bonds of the state of
MINAS GERAES
Consolidated Capital

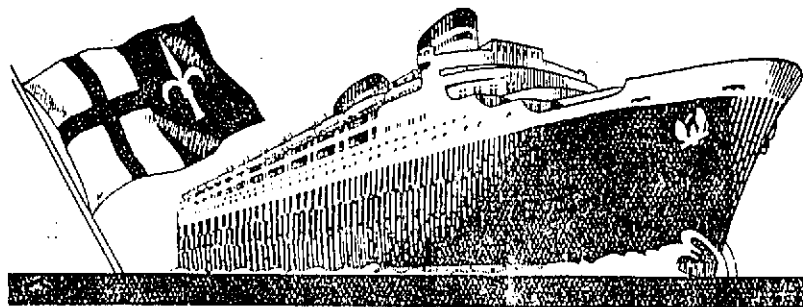
Cumulative Interest.

Payable in 10 monthly instalments of 20\$000
with a possibility of winning anything
from 50 to 1000 contos twice a year!

CITA LTDA.

RUA DA CANDELARIA corner of Rua São Pedro

If the last four numbers of your bond coincide
with those of the first three prizes of the
Federal Lottery of any Saturday while
liquidating the instalments you will receive,
on application, a free bond fully paid up.



"ITALIA" (FLOTTE) "COSULICH" S.T.N.

Express service With The Most Luxu- rious Ships on The European Route	Santos	RIO	Bahia	Pernam- buco	Dakar	Las Palmas	Gibraltar, Algier	Barcel- lona	Naples	Villa- franche	Genoa	Trieste
Oceania	July 9	July 10	July 12	July 13	-	-	July 20	-	-	July 23	July 23	July 25
Neptunia	Aug. 6	Aug. 7	Aug. 9	Aug. 10	-	-	Aug. 17	Aug. 18	-	Aug. 20	-	Aug. 22
Augustus	Aug. 23	Aug. 24	-	-	-	-	-	-	Sept. 1	-	Sept. 5	Sept. 5
Neptunia	Sept. 24	Sept. 25	Sept. 27	Sept. 28	-	-	Oct. 5	-	-	Oct. 6	Oct. 7	Oct. 10

TO: SYRIA - EGYPT - INDIA - CHINA & JAPAN
with the Lloyd Triestino's famous "Contes" - **Conté Verde, Conte Rosso & Victoria**

TOURIST TRIPS TO EUROPE
1st, 2nd and cabin class, return
fares, with short validity,
at special rates.
APPLY FOR DETAILS

CARGO SERVICE

	R. Grande Santos	RIO	Victoria	Bahia
Teresa	-	July 16	July 18	July 20
Caterina Gerolimich, July 23, 25, 27, 29				

General Agents
for Brazil

ITALMAR

Séde: S. A. BRASILEIRA DE EMPREZAS MARITIMAS
Avenida Rio Branco, 4
Rio de Janeiro Phone: 23-5840 - Telegrams: ITALMARE-RIO

FILIAES: - S. Paulo - Santos - Bahia
P. Alegre - Rio Grande - Victoria - Recife

**MANIFESTS OF COFFEE
RIO DE JANEIRO**

JUNE 19.

**"Neptunia"
TRIESTE**

Castro, Silva & Cia.	2.191
Ornsteln & C'a.	1.713
A. Jabour & Cia.	1.377
Pinto, Lopes & Cia.	712
E. G. Fontes & Cia.	692
Vivacqua Irmãos, S/A.	376
Hard, Rand & Cia.	251
Cia. Nac. Comm. de Café.	125
Mc. Kinlay S/A.	113
Sinner S/A.	32

MESSINA

Pinto, Lopes & Cia.	150
-----------------------------	-----

SUDAN

S. Pereira & Cia.	167
---------------------------	-----

VOLO

Hard, Rand & Cia.	125
---------------------------	-----

ALEXANDROPOLIS

Castro, Silva & Cia.	100
------------------------------	-----

LIMASSOL

S. Pereira & Cia.	32
Sinner S/A	32

RODI

Sinner S/A	63
----------------------	----

LARNACA

Castro, Silva & Cia.	31
------------------------------	----

FAMAGUSTA

Castro, Silva & Cia.	31
S. Pereira & Cia.	31

JAFFA

E. G. Fontes & Cia.	125
Pinto, Lopes & Cia.	63

Theodor Wille & Cia. L.Ld.	63
BEYROUTH	
Hard, Rand & Cia.	250
ALEXANDRETTA	
Sinner S/A.	63
MYTILENE	
Castro, Silva & Cia.	125
GALATZ	
Theodor Wille & Cia. Ltd.	875
E. G. Fontes & Cia.	250
Arbuckle & Cia.	250
CONSTANZA	
Theodor Wille & Cia. Ltd.	500
Mc. Kinlay S/A.	95
SALONICA	
Castro, Silva & Cia.	493
Sinner S/A.	300
PATRAS	
Sinner S/A.	300
PIREUS	
Sinner S/A.	2.400
Castro, Silva & Cia.	925
A. Jabour & Cia.	500
PORT SAID	
S. Pereira & Cia.	125
E. G. Fontes & Cia.	125
Sinner S/A	125
ALEXANDRIA	
Sinner S/A.	813
Theodor Wille & Cia. Ltd.	500
Ornsteln & Cia.	250
E. G. Fontes & Cia.	63
Pinto, Lopes & Cia.	63
SUSAK	
Ornsteln & Cia.	750
A. Jabour & Cia.	313
Pinto, Lopes & Cia.	188
Vivacqua Irmãos S/A	63

METKOVICH	
Ornsteln & Cia.	314
A. Jabour & Cia.	251
Pinto, Lopes & Cia.	125
Vivacqua Irmãos, S/A.	125
Theodor Wille & Cia. Ltd.	62
GRAVOSA	
Mc. Kinlay S/A	126
DURAZZO	
Castro, Silva & Cia.	200
Sinner S/A	125
ZARA	
Mc. Kinlay S/A.	63
FTUME	
Mc. Kinlay S/A	126
Total	20.815

JUNE 20.

**"Southern Cross"
NEW YORK**

American Coffee Corp.	1.500
Leon Israel Co. S/A	1.000
Total	2.500

JUNE 20.

**"Campana"
DAKAR**

E. G. Fontes & Cia.	125
BARCELONA	
Castro, Silva & Cia.	740
MARSEILLE	
Arbuckle & Cia.	1.000
E. G. Fontes & Cia.	250
Pinto, Lopes & Cia.	250
A. Jabour & Cia.	125

TUNIS	
A. Jabour & Cia.	628
PHELIPPEVILLE	
A. Jabour & Cia.	503
Ornstein & Cia.	125
Vivacqua Irmãos S/A.	63
BONE	
Mc. Kinlay S/A.	63
Ornstein & Cia.	427
ALEXANDRIA	
Sinner S/A	501
CEUTA	
Cia. Nac. Comm. de Café.	125
Mc. Kinlay S/A.	63
SOUSSE	
Sinner S/A	62
BOUGIE	
Sinner S/A.	250
TANGER	
Theodor Wille & Cia. Ltd.	125
ALGER	
A. Jabour & Cia.	376
Vivacqua Irmãos, S/A.	250
Sinner S/A	63
Marcellino Martins F.º & C.º	63
Total	6.177

JUNE 21.	
"Afel"	
NEW ORLEANS	
Castro, Silva & Cia.	500
E. G. Fontes & Cia.	500
Hard, Rand & Cia.	250
Total	1.250

JUNE 22.	
"Pacific"	
STOCKHOLM	
Hard, Rand & Cia.	250
Theodor Wille & Cia. Ltd.	125
GDYNIA	
Theodor Wille & Cia. Ltd.	250
Pinto, Lopes & Cia.	63
DANTZIG	
Vivacqua Irmãos, S/A	250
Pinto, Lopes & Cia.	126
OSCARSHAMN	
Mc. Kinlay S/A	125
SUNDSVALL	
Mc. Kinlay S/A	125
HAPARANDA	
Soc. Export. de Café, Ltd.	125
HELSINGBORG	
E. G. Fontes & Cia.	125
Total	1.564

JUNE 22.	
"Alberta"	
GENOA	
Theodor Wille & Cia. Ltd.	675
Ornstein & Cia.	125
TRIESTE	
Vivacqua Irmãos, S/A	125
GRAVOSA	
Theodor Wille & Cia. Ltd.	63
METKOVICH	
Ornstein & Cia.	63
Theodor Wille & Cia. Ltd.	63
SUSAK	
Ornstein & Cia.	63
ALEXANDRIA	
Ornstein & Cia.	250
Theodor Wille & Cia. Ltd.	63
PORT SAID	
Ornstein & Cia.	250
PIREUS	
Theodor Wille & Cia. Ltd.	250

SALONICA	
Theodor Wille & Cia. Ltd.	63
CONSTANZA	
Pinto, Lopes & Cia.	250
BEYROUTH	
Theodor Wille & Cia. Ltd.	63
HAIFFA	
Theodor Wille & Cia. Ltd.	62
FAMAGUSTA	
Theodor Wille & Cia. Ltd.	62
Total	2.490
JUNE 22.	
"Rio de Janeiro Maru"	
HOUSTON	
Hard, Rand & Cia.	125
NEW ORLEANS	
Vivacqua Irmãos S/A.	4.000

YOU MUST HAVE
A COPY OF



SOUTH AMERICAN
HANDBOOK

OBTAINABLE AT
ROYAL MAIL OFFICES
PRICE 10\$000

Ornstein & Cia.	500
Marcellino Martins F.º & C.º	500
LOS ANGELES	
Leon Israel Co. S/A.	500
Arbuckle & Cia.	250
SAN FRANCISCO DA CALIFORNIA	
Arbuckle & Cia.	75
Total	5.950

JUNE 23.	
"Waterland"	
AMSTERDAM	
Theodor Wille & Cia. Ltd.	250
Marcellino Martins F.º & C.º	125
Total	375

JUNE 24.	
"Borgland"	
OSLO	
Mc. Kinlay S/A.	250
HELSINKI	
A. Jabour & Cia.	450
Vivacqua Irmãos, S/A.	250
COPENHAGEN	
E. G. Fontes & Cia.	125
BERGEN	
Theodor Wille & Cia. Ltd.	63
Total	1.138

JUNE 25.	
"Asturias"	
VIGO	
Mc. Kinlay S/A	250
GLJON	
Mc. Kinlay S/A	100
CAPE TOWN	
Hard, Rand & Cia.	150
ALGOA BAY	
Hard, Rand & Cia.	200
EAST LONDON	
Hard, Rand & Cia.	50
DURBAN	
Hard, Rand & Cia.	100
Total	850

JUNE 26.	
"Louisiana"	
LAS PALMAS	
Sinner S/A	70
FUNCHAL	
Fraga Irmãos & Cia.	100
COPENHAGEN	
Theodor Wille & Cia. Ltd.	500
E. G. Fontes & Cia.	313
Cia. Nac. Comm. de Café.	125
THISTED	
Theodor Wille & Cia. Ltd.	63
Total	1.171

JUNE 27.	
"Macedonier"	
ANTWERP	
Theodor Wille & Cia. Ltd.	564
Vivacqua Irmãos, S/A	250
S. Perelra & Cia.	250
Ornstein & Cia.	214
José Guarino	125
Mc. Kinlay S/A	100
Total	1.503
Total Overseas	45.783

MANIFESTS OF COFFEE SANTOS

JUNE 15.	
"Nordhval"	
NEW YORK	
Naumann, Gepp & Cia. Ltd	12.500
H. La Domus & Cia.	11.500
Ray Deininger & Cia. Ltd.	7.000
Hard, Rand & Cia.	5.000
Theodor Wille & Cia. Ltd.	4.153
Cia. Leme Ferrelra	3.000
Cia. Prado Chaves	2.750
Lutz Elverdin & Cia. Ltd.	2.500
Paiva, Nunes & Cia.	2.000
Oswaldo Ferreira & Cia.	1.830
Cia. Paulista de Exportação	1.000
Zander & Cia. Ltd.	800
Sampaio Bueno & Cia.	500
Exp. Rubias, Ltda.	375
Exp. Café Brasil, Ltda.	250
Total	54.958

JUNE 17.	
"Cap Arcona"	
HAMBURG	
Theodor Wille & Cia. Ltd.	1.252
Leon Israel Co. S/A.	1.168
Almeida Prado & Cia.	900
Lima, Nogueira & Cia.	375
Soc. Nacional Export. Ltd.	375

W. Gieseler	375
E. Johnston & Cia. Ltd.	358
Cia. Prado Chaves	250
Pelrone, Penteadó & Cia.	126
Nioac & Cia. Ltd.	125
Hard, Rand & Cia.	125
Exp. Café Brasil, Ltd.	125
Naumann, Gepp & Cia. Ltd.	125
STOCKHOLM	
Junqueira, Meirelles & Cia.	125
Almeida Prado & Cia.	50
GEEFLE	
Junqueira, Meirelles & Cia.	125
OSLO	
Theodor Wille & Cia. Ltd.	63
Total	6.042

JUNE 18.

"Neptunia"	
NAPLES	
Hard, Rand & Cia.	4.400
I. R. Matarazzo	2.417
Naumann, Gepp & Cia. Ltd.	250
Nioac & Cia. Ltd.	250
Exp. Rubiac, Ltd.	150
TRIESTE	
Naumann, Gepp & Cia. Ltd.	1.000
Nioac & Cia. Ltd.	476
Exp. Rubiac, Ltd.	550
Almeida Prado & Cia.	376
Theodor Wille & Cia. Ltd.	250
Cia. Prado Chaves	183
Leon Israel Co. S/A	188
E. Johnston & Cia. Ltd.	195
Martins, Gregory & Cia. Ltd.	63
ALEXANDRIA	
Theodor Wille & Cia. Ltd.	250
Cia. Prado Chaves	125
Almeida Prado & Cia.	63
VENICE	
Martins, Gregory & Cia. Ltd.	155
Mario Lionello	80
TRIPOLI	
Exp. Rubiac, Ltd.	63
BEYROUTH	
Cioffi, Guerra & Cia. Ltd.	2
Total	11.462

JUNE 19.

"Pacific"	
GOTHEMBURG	
Hard, Rand & Cia.	1.001
Theodor Wille & Cia. Ltd.	725

JUNE 19.

"Southern Cross"	
NEW YORK	
American Coffee Corp.	10.000
Theodor Wille & Cia. Ltd.	4.050

Lima, Nogueira & Cia.	625
Cia. Prado Chaves	525
Junqueira, Meirelles & Cia.	375
Cia. Paulista de Exportação	375
Naumann, Gepp & Cia. Ltd.	350
Martins, Gregory & Cia. Ltd.	250
Almeida Prado & Cia.	250
Soc. Nacional Export, Ltd.	125
H. La Domus & Cia.	125
Exp. Café Brasil, Ltd.	125
HELSINGBORG	
Hard, Rand & Cia.	2.625
Leon Israel Co. S/A	500
Exp. Café Brasil, Ltd.	250
Theodor Wille & Cia. Ltd.	250
Lima, Nogueira & Cia.	125
STOCKHOLM	
Hard, Rand & Cia.	1.000
Soc. Nacional Export, Ltd.	575
Lima, Nogueira & Cia.	375
Theodor Wille & Cia. Ltd.	187
Cia. Prado Chaves	125
Sampaio Bueno & Cia.	125
H. La Domus & Cia.	125
Exp. Café Brasil, Ltd.	125
Almeida Prado & Cia.	100
DANTZIG	
Theodor Wille & Cia. Ltd.	313
Hard, Rand & Cia.	125
Naumann, Gepp & Cia. Ltd.	113
GDYNIA	
Theodor Wille & Cia. Ltd.	438
Naumann, Gepp & Cia. Ltd.	63
GEEFLE	
Junqueira, Meirelles & Cia.	250
Leon Israel Co. S/A	125
MALMOE	
Cia. Paulista de Exportação	125
KALMAR	
Junqueira, Meirelles & Cia.	125
CARLSKRONA	
Theodor Wille & Cia. Ltd.	125
HALMSTAD	
Hard, Rand & Cia.	125
WIIPURI	
Naumann, Gepp & Cia. Ltd.	50

Hard, Rand & Cia.	3.954
Oswaldo Ferreira & Cia.	3.125
H. La Domus & Cia.	2.500
Ray Deininger & Cia. Ltd.	2.500
Almeida Prado & Cia.	1.332
Leon Israel Co. S/A	1.250
Martins, Gregory & Cia. Ltd.	1.200
Luz Elverdin & Cia. Ltd.	1.000
Cia. Leme Ferreira	925
Mc. Laughlin & Cia.	751
Arbuckle & Cia.	750
Cia. Prado Chaves	750
Rebello, Alves & Cia.	600
Luiz Ferreira & Cia.	520
Zancler & Cia. Ltd.	500
Sampaio Bueno & Cia.	500
Soc. Nacional Export, Ltd.	500
Wright & Cia. Ltd.	500
Lima, Nogueira & Cia.	500
Ramos, Silva & Cia. Ltd.	300
Exp. Café Brasil, Ltd.	250
Exp. Rubiac, Ltd.	250
Cia. Paulista de Exportação	250
Nioac & Cia. Ltd.	250
Vidal & Cia.	246
Palva, Nunes & Cia.	200

MONTREAL	
American Coffee Corp.	750
Leon Israel Co. S/A	100
Total	40.303

JUNE 19.

"Campana"	
MARSEILLE	
E. Johnston & Cia. Ltd.	2.125
Theodor Wille & Cia. Ltd.	1.003
Naumann, Gepp & Cia. Ltd.	688
H. La Domus & Cia.	375
Martins, Gregory & Cia. Ltd.	250
Exp. Rubiac, Ltd.	251
Almeida Prado & Cia.	125
Barros, Pinto & Cia.	125
Exp. Café Brasil, Ltd.	125
ALGER	
Theodor Wille & Cia. Ltd.	250
TUNIS	
Nioac & Cia. Ltd.	188
SOUSSE	
Theodor Wille & Cia. Ltd.	63
BEYROUTH	
Cia. Prado Chaves	63
Total	5.631

DEN NORSKE SYD-AMERIKA LINJE

(The Norwegian South America Line)

Regular Service to Denmark, Finland,
Norway, Baltic, River Plate
& vice-versa with 8 fast going
MODERN DIESEL MOTOR LINERS

NEXT SAILINGS

FOR RIVER PLATE

m/s "BORG" July 13th.

**NORWAY & BALTIC
FOR FINLAND, DENMARK,**

m/s "BRA-KAR" July 23rd.



The vessels dispose of accommodations for a limited number
of 1st. class passengers for Scandinavia and also for London
& Dieppe with transshipment in Teneriffe.

For further particulars apply to

FREDRIK ENGELHART & CIA. — RUA S. PEDRO N. 9 — RIO JANEIRO
ALEX S. GRIEG & CIA. — PRAÇA DA REPUBLICA, 51 — SANTOS

JUNE 19.		Duarte Pereira & Cia.	309	Cia. Prado Chaves.	3.250
"Veerhaven"		Cia. Leme Ferreira	2.350	Cia. Leme Ferreira	1.750
HAVRE		Cia. Prado Chaves	2.000	H. La Domus & Cia.	875
Almeida Prado & Cia.	250	Junqueira, Meirelles & Cia. .	2.000	Hard, Rand & Cia.	375
ANTWERP		Zander & Cia. Ltd.	1.650	Junqueira, Meirelles & Cia. .	250
Almeida Prado & Cia.	125	Cia. Paulista de Exportação	1.475	Martins, Gregory & Cia. Ltd	220
BORDEAUX		Lima, Nogueira & Cia.	1.425	Nossack & Cia.	100
Barros, Pinto & Cia.	125	Oswaldo Ferreira & Cia. ...	1.375	Lima, Nogueira & Cia.	97
		Hard, Rand & Cia.	1.125	Almeida Prado & Cia.	86
		Ramos, Silva & Cia.	1.000	E. Johnston & Cia. Ltd.	84
		B. Gonçalves & Cia. Ltd. ...	1.000	Total	
		Leon Israel Co. S/A.	500	21.401	
		Exp Rubiac, Ltd.	375	JUNE 22.	
		H. La Domus & Cia.	375	"EH"	
		Sancof & Cia. Ltd.	300	NEW ORLEANS	
		Pantaleão & Cia. Ltd.	250	Almeida Prado & Cia.	4.985
		Nioac & Cia. Ltd.	250	Ray Deining & Cia. Ltd. ...	2.500
		Luiz Ferreira & Cia.	125	E. Johnston & Cia. Ltd. ...	2.250
		HOUSTON		Oswaldo Ferreira & Cia. ...	1.500
		Cia. Leme Ferreira	790	Paiva, Nunes & Cia.	1.250
		Luiz Ferreira & Cia.	125	Vidigal, Prado & Cia.	1.250
		Total		Naumann, Gepp & Cia. Ltd	916
		36.868		Lima, Nogueira & Cia.	725
		A. Duarte Pereira.	110	Franco, Soares & Cia.	500
		Total		Vidal & Cia.	500
		1.502		Cia. Leme Ferreira	500
		JUNE 21.		B. Gonçalves & Cia. Ltd. ...	500
		"Alberta"		Eugenio Pajst & Cia.	500
		GENOA		Luiz Elverdin & Cia. Ltd. ...	500
		Cia. Leme Ferreira	5.000	Hard, Rand & Cia.	400
		Pelrone, Penteado & Cia. ...	4.325	Exp. Rubiac, Ltd.	375
		Naumann, Gepp & Cia. Ltd.	415	Nioac & Cia. Ltd.	250
		Almeida Prado & Cia.	400	Cia. Cafeteira de M. G.	250
		Leon Israel Co. S/A	250	Cia. Prado Chaves	250
		Mario Lionello.	138	H. La Domus & Cia.	250
		Cia. Paulista de Exportação	63	HOUSTON	
		Nossack & Cia.	50	Junqueira, Meirelles & Cia. .	1.475
		NAPLES		Almeida Prado & Cia.	1.250
		I. R. F. Matarazzo	1.333	Franco, Soares & Cia.	1.250
		TRIESTE		Cia. Prado Chaves	250
		Theodor Wille & Cia. Ltd. .	188	Cia. Leme Ferreira	250
		Martins, Gregory & Cia. Ltd	125	H. La Domus & Cia.	250
		ALEXANDRIA		A. Slon & Cia.	125
		Theodor Wille & Cia. Ltd. .	250	Lima, Nogueira & Cia.	125
		LIVORNO		Total	
		Cia. Paulista de Exportação	63	25.126	
		Total		JUNE 23.	
		12.600		"Borgland"	
		JUNE 21.		OSLO	
		"Brittany"		Cia. Leme Ferreira	503
		BUENOS AIRES		Theodor Wille & Cia. Ltd. ...	414
		Raphael Sampalo & Cia. ...	727	Cia. Prado Chaves.	250
		Vidal & Cia.	300	Martins, Gregory & Cia. Ltd	105
		Total		E. Johnston & Cia. Ltd. ...	63
		1.027		Leon Israel Co. S/A	50
		JUNE 21.		BERGHEM	
		"Waterland"		Cia. Leme Ferreira	325
		AMSTERDAM		Theodor Wille & Cia. Ltd. .	300
		Theodor Wille & Cia. Ltd. .	11.000	Martins, Gregory & Cia. Ltd.	250
		Naumann, Gepp & Cia. Ltd	3.334	COPENHAGEN	
		Lima Nogueira & Cia.		E. Johnston & Cia. Ltd. ...	625

Subscription Form: To WILEMAN'S BRAZILIAN REVIEW

P. O. BOX 809-Rio de Janeiro

Please enter my/our subscription to WILEMAN'S BRAZILIAN REVIEW for one year beginning

..... for which I/we enclose order

TERMS (POST FREE)

IN BRAZIL RS: 100\$000 — Payable in advance

ELSEWHERE £3/0/0

ADVERTISEMENT RATES
ON REQUEST.

SINGLE COPIES RS: 2\$000
(to subscribers only)

		WIPURI		COASTWISE	
				JUNE 20.	
				"Almirante Jaceguay"	
				RECIFE	
W. Gieseler	125				
TRONDHJEM					
E. Johnston & Cia. Ltd.	125	Cia. Paulista de Exportação.	50		
LARVIK					
Naumann, Gepp & Cia. Ltd.	63	Total	3,298	Theodor Wille & Cia. Ltd.	25
HELSINKI					
Cia. Paulista de Exportação.	50	Total Overseas	262,916	Total Coastwise	25

EXPORTS OF COFFEE THROUGH THE PORT OF RIO DE JANEIRO DURING THE 1934-1935 CROP

COFFEE

General Movement of Bahia Coffee During
month of May, 1935.

Shippers:	Bags	Statistics of Corrêa Ribeiro & Co. (In Bags 60 Kilos)	
Ornstein & Cia.	301,440	Exported	22,347
Theodor Wille & Cia. Ltda.	243,034	Received	16,229
A. Jabour & Cia.	218,964	Stock	54,437
Vivacqua Irmãos S. A.	183,003		
Leon Israel Company S. A.	180,504		
American Coffee Corporation	162,700		
Sinner S. A.	136,215		
Mc Kinlay S. A.	128,610		
Hard Rand & Cia.	117,716		
E. G. Fontes & Cia.	101,247		
Pinto Lopes & Cia. Ltda.	89,653		
Cia. Nacional do Comercio de Café	75,339		
Rebello Alves & Cia.	72,633		
José Guarino	70,508		
Marcellino Martins Filho & Cia.	63,219		
Souza Pimentel & Cia.	54,866		
Hector Bassan	44,342		
Castro Silva & Cia.	41,752		
Pinheiro Ladeira & Cia.	29,973		
Cia. Caféeira de Minas Geraes	27,939		
Norton Megaw & Co Ltd.	20,683		
Hadjes & Cia. Ltda.	18,891		
Sociedade Exportadora de Café S. A.	18,334		
Arbuckle & Co.	15,346		
S. Pereira & Cia.	14,372		
Fraga, Irmão & Cia. Ltda.	12,485		
Puiva Nunes & Cia.	7,850		
Fabio Netto	7,530		
Serafim Fernandes	7,467		
Luigi Bozzo d'Erminio	6,467		
B. Gonçalves & Cia. Ltda.	4,320		
Mario Telles	3,653		
Pinto & Cia.	2,338		
Rolundo & Cia.	1,752		
Armazens Geraes Belgas	645		
Ernesto Riggemback	539		
Soc. Polono Brasileira "Koscinzo"	500		
Cia. Armazens Geraes de São Paulo	360		
E. M. Oliveira Castro	309		
B. A. Brasileira de Emp. Marilimas	300		
Bhering S. A.	212		
Departamento Nacional do Café	128		
Sylvio Campestrinni	60		
Pereira Carneiro & Cia. Ltda.	55		
Waldemar Falcão	50		
Sundry	147		
TOTAL	2,488,448		
Idem 1933/34 crop	2,784,019		
Idem 1932/33 crop	3,746,692		
		TOTAL	22,347

Shippers:

Corrêa Ribeiro & Co.	6,440
Tude, Irmão & Co.	3,943
Steinbach & Co.	1,501
F. Stevenson & Co.	1,938
Scaldeferri Irmãos & Co.	3,376
J. Studer & Co.	1,574
Bartilotti & Co.	935
Manoel Joaq. de Carvalho & Co.	315
Grillo, Lamberti & Co.	1,000
Braz Bartilotti & Co.	1,325
TOTAL	22,347

Destination

Havre	14,256
Marselilles	1,534
Bordeaux	1,543
Genoa	62
Trieste	938
Houston	1,000
Venice	63
Antwerp	250
Dakar	63
New Orleans	500
Naples	63
Pará	530
Ceará	290
Maranhão	310
Natal	10
Manãos	190
Areia Branca	20
Parnahyba	195
Pelotas	25
Santarém	150
Itacoatiara	50
Macao	160
Parintins	115
Obidos	20
Maceió	10

SUGAR AND COTTON QUOTATIONS

		RIO DE JANEIRO, 5th. July, 1935.					
COTTON SERVICE		29	1	2	3	4	5
<i>Liverpool 12.30 P.M.</i>							
São Paulo fair spot		6.77	6.71	6.74	6.80	6.82	6.79
Pernambuco Maceió fair spot		6.82	6.56	6.59	6.65	6.77	6.64
American Middling spot		6.87	6.86	6.89	6.95	6.97	6.94
		6.46					
American futures	July	6.15	6.14	6.18	6.25	6.27	6.23
	October	6.05	6.04	6.08	6.15	6.17	6.13
	January	6.03	6.02	6.06	6.14	6.16	6.12
	March		6.00	6.04	6.12	6.14	6.10
	May						
can Middling Uplands		12.15	12.15	12.35	12.45	Holiday	12.20
New York Ameri	July	11.83				"	
New York futures	October	11.50	11.50	11.69	11.78	"	11.62
	January	11.52	11.51	11.69	11.76	"	11.50
	March	11.54	11.55	11.71	11.82	"	11.57
	May		11.55	11.75	11.87	"	11.59
SUGAR SERVICE							
New York futures	July	Holiday	2.38	2.37	2.35	"	2.30
	September	"	2.41	2.40	2.38	"	2.34
	December	"	2.40	2.38	2.35	"	2.32
	March	"	2.15	2.14	2.13	"	2.09
London futures	July	4/6	4/6 1/2	4/6 3/4	4/6 1/2	4/5 1/2	4/5
	August	4/6 3/4	4/7	4/7	4/6 3/4	4/5 1/2	4/5
	September	4/6 3/4	4/6 3/4	1/6 1/2	4/6 1/4	4/5 1/4	4/4 1/2
	October	4/6 1/2	4/6 1/2	4/6 1/2	4/6	4/5	4/4 3/4
RUBBER SERVICE							
Upriver Fine		13 3/8	13 3/8	13 3/8	13 3/8	13 3/8	13 3/8
Smoked Sheets		13 1/4	12 3/8	12 3/8	12 3/8	12 3/8	12 1/4
Markets		Steady	Steady	Steady	Steady	Steady	Steady

Cotton

The Pernambuco Market closed on 1st July 1935, with first sorts quoted at 77\$ against 76\$000 on the previous Saturday and 55\$000 on 1st July 1934.

The Movement at Pernambuco for the week ended 1st July 1935 was as follows, in bales of 60 kilos.

Stock on 22nd June 1935	12.700
Entries during week ended 1st July 1935	3.500
Available	16.200
Deliveries during same week	2.900
Stock on 1st July 1935	13.300
Ditto 1934	27.100

For the crop to date entries amounted to ... 251.000 bales against 204.000 bales during same period last crop.

The Rio Market closed on 1st July 1935 with prices quoted as follows per 10 kilos:

	22nd June 1935	1st July 1935
Seridó 3x4	66\$000—65\$000	66\$000—65\$000
Sertões 3x5	63\$000—58\$500	63\$000—58\$500
Matta 3x5	46\$000	46\$000
Paulista 3x5		

The Movement at Rio de Janeiro for the week ended 22nd June 1935, was as follows:

Stock on 22nd June 1935	3.826
Entries during week ended 1st July 1935	3.313
Available	7.139
Deliveries during same week	2.358
Stock on 1st July 1935	4.781
Ditto 1934	3.618

Sugar

The Pernambuco Market closed on 1st July 1935 with all quotations nominal, unaltered as compared with the previous Saturday.

The Movement at Pernambuco during the week ended 1st July 1935, was as follows, in bags of 60 kilos.

	Bags
Stock on 22nd June 1935	952.800
Entries during week ended July 1st 1935	1.000
Available	953.800
Deliveries during same week	65.000
Stock on 1st July 1935	888.800
Ditto 1934	437.300

For the crop to date entries amounted to ... 4,334,200 bags as against 3,395,000 bags for same period last crop.

The Rio Market closed on 1st July 1935 with prices quoted as follows per 60 kilos: crystals 51\$000 to 52\$000, demeraras 47\$500 to 48\$000 mascavinho, nominal and mascavo 43\$000 to 44\$000.

The Movement at Rio de Janeiro for the week ended 1st July 1935 was as follows, in bags:

Stock on 22nd June 1935	57,609
Entries during week ended July 1st 1935	54,764
<hr/>	
Available	112,373
Deliveries during same week	58,677
<hr/>	
Stock on July 1st 1935	53,696
Ditto on July 1st 1934	22,405

IF YOU are perfectly satisfied with the price you are paying for your envelopes you are wasting time reading this advertisement **BUT** just to save you wasting time we suggest that the next time you need any envelopes you send us a sample. We'll match it and send you our quotation. If you can get a cheaper quotation it means that you are either getting inferior quality envelopes or else a mistake has been made.

THOMAS DRAPER

MINING ENGINEER

Caixa Postal 2955 Rio de Janeiro

III

WILEMAN'S BRAZILIAN REVIEW

Tel. 23-1354

Theophilo Ottoni 41 - 3.

MEAT

MEAT CLEARANCES DURING WEEK-ENDING 27th. JUNE, 1935. (PER DESTINATIONS).

		Frig. Wilson	Frozen pork	18,911	JUNE 23rd.		
		Frig. Anglo	Chilled beef	65,580	"Hardwicke Grange"		
		Armour Co.	Frozen pork	18,641	LONDON		
					Frig. Wilson	Chilled beef	207,870
					Frig. Wilson	Frozen offal	62,974
					Armour Co.	Chilled beef	198,102
					Armour Co.	Frozen offal	22,520
					JUNE 24th.		
					"Asturias"		
					LISBON		
					I.R.F.Matar.	Preserved	13,630
					JUNE 25th.		
					"Rodney Star"		
					LONDON		
		Frig. Anglo	Chilled beef	187,528	Frig. Anglo	Chilled beef	163,531
		Frig. Anglo	Preserved	1,132	Frig. Anglo	Frozen offal	124,947
		Armour Co.	Frozen beef	5,156	Frig. Anglo	Preserved	9,709
					"La Rosarina"		
					LIVERPOOL		
					Frig. Anglo	Chilled beef	38,088
					JUNE 26th.		
					"Lipari"		
					HAVRE		
					Frig. Anglo	Frozen beef	15,170
					Frig. Wilson	Frozen offal	2,321
							<hr/>
					Total	1,716,424	

MEAT CLEARANCES DURING WEEK-ENDING 27th. JUNE, 1935. (PER DESTINATIONS).

				JUNE 19th.			
				"Campana"			
				MARSEILLES			
		Kilos	Frig. Anglo	Preserved	2,358		
				BEYROUTH			
				Frig. Anglo	Preserved	14,152	
				"Southern Cross"			
				NEW YORK			
				Frig. Anglo	Preserved	48,082	
				TRINIDAD			
		Frig. Anglo	Chilled beef	187,528	Armour Co.	Preserved	6,345
		Frig. Anglo	Preserved	1,132			
		Armour Co.	Frozen beef	5,156			
				JUNE 21st.			
				"Nasmyth"			
				LIVERPOOL			
		Armour Co.	Chilled beef	150,714	Frig. Anglo	Preserved	35,382
				"Alberia"			
				MALTA			
		Frig. Wilson	Chilled beef	209,929	Frig. Anglo	Preserved	11,794
		Frig. Wilson	Frozen offal	58,259			

FRUIT

CONFIRMATION OF SANTOS AND S. SEBASTIAO FRUIT CLEARANCES DURING WEEK-ENDING JUNE 25th., 1935.

FROM SANTOS

BANANAS IN BUNCHES

JUNE 16th.	
"Avila Star"	
London	12.195
JUNE 17th.	
"Highland Monarch"	
London	10.260
JUNE 21st.	
"Waterland"	
Amsterdam	4.470
JUNE 23rd.	
"Hardwicke Grange"	
London	7.313
JUNE 25th.	
"Rodney Star"	
London	3.442

ORANGES IN CASES

JUNE 15th.	
"Arlanza"	
Southampton	4.498
JUNE 16th.	
"Avila Star"	
London	19.996
JUNE 17th.	
"Navasota"	
Liverpool	24.069
"Highland Monarch"	
London	13.471
JUNE 19th.	
"Southern Cross"	
Bermuda	225
JUNE 21st.	
"Waterland"	
Amsterdam	19.259
JUNE 23rd.	
"Hardwicke Grange"	
London	7.042
JUNE 24th.	
"Asturias"	
Southampton	5.543
JUNE 25th.	
"La Rosarina"	
Liverpool	16.690
"Rodney Star"	
London	25.259
JUNE 26th.	
"Lipari"	
Havre	2.800
Antwerp	2.000

GRAPE-FRUIT IN CASES

JUNE 15th.	
"Arlanza"	
Southampton	110
JUNE 16th.	
"Avila Star"	
London	1.204
JUNE 17th.	
"Navasota"	
Liverpool	1.458
"Highland Monarch"	
London	322
JUNE 21st.	
"Waterland"	
Amsterdam	34

JUNE 24th.	
"Asturias"	
Southampton	211
JUNE 25th.	
"La Rosarina"	
Liverpool	77
"Rodney Star"	
London	477

TANGERINES IN CASES

JUNE 16th.	
"Avila Star"	
London	210
JUNE 17th.	
"Navasota"	
Liverpool	456
"Highland Monarch"	
London	66
JUNE 21st.	
"Waterland"	
Amsterdam	760
JUNE 25th.	
"La Rosarina"	
Liverpool	334
"Rodney Star"	
London	280

LEMONS IN CASES

JUNE 17th.	
"Navasota"	
Liverpool	65
JUNE 25th.	
"La Rosarina"	
Liverpool	100
"Rodney Star"	
London	31

FROM S. SEBASTIAO

BANANAS IN BUNCHES

JUNE 16th.	
"Avila Star"	
London	18.445
JUNE 25th.	
"Rodney Star"	
London	26.657

SHIPPING

MOVEMENTS OF VESSELS:

FURNESS PRINCE LINE
(Houlder Brothers & Co. (Brazil) Ltd. Agents)

M/S "Western Prince" — leaves Rio 11th July for Trinidad and New York.
 M/S "Southern Prince" — due Rio de Janeiro from N. York 12th July. sails for Santos, Montevideo and Buenos Aires.
 M/S "Southern Prince" — leaves Rio 25th July for Trinidad and New York.
 M/S "Northern Prince" — due Rio de Janeiro from New York 26th July, sails for Santos, Montevideo and Buenos Aires.
 M/S "Northern Prince" — leaves Rio 8th August Trinidad and New York.
 M/S "Western Prince" — due Rio de

Janeiro from New York 9th Aug., sails for Santos, Montevideo and Buenos Aires.

MUNSON STEAMSHIP LINES

Federal Express Co. — Gal. Agents

Passengers steamers: —

"Southern Cross" — Sailed B. Aires June 15th, arr. Santos June 18th, sailed June 19th, arrived & sailed Rio June 20th, arr. Trinidad June 28th, due Bermuda July 2nd, New York July 4th.
 "Pan America" — Sailed B. Aires June 29th, arrived Santos July 2nd, sails July 3rd, due Rio July 4th, Trinidad July 12th, Bermuda July 16th, New York July 18th.
 "American Legion" — Sailed N. York June 22nd, Bermuda June 24th, due Rio July 5th, Santos July 6th, Montevideo July 9th, B. Aires July 10th.
 "Western World" — Sails New York July 6th, due Bermuda July 8th, Rio July 19th, Santos July 20th, Montevideo July 23rd, B. Aires July 24th.

Cargo steamers: —

MC. CORMICK STEAMSHIP CO.
(P. A. P. LINE)

Federal Express Co. — Gal Agents

"Emergency Aid" — Sailed B. Aires June 21st, Montevideo June 23rd, Santos June 30th, arrived & sailed Rio July 1st. Due Bahia July 4th, Para July 11th, thence Barbados, Trinidad, Colombia, Cartagena, Cristobal, Canal & U. S. Pacific Ports.

"West Ira" — Sailed Los Angeles May 17th, Canal June 1st. Due Rio July 13th. Santos July 15th, direct to Buenos Aires.

"Hollywood" — Sails from Buenos Aires July 19th, Montevideo July 22nd, arrives Santos July 25th, sails July 30th, arrives Rio 31st, sails Aug. 1st, arrives & sails Bahia Aug. 4th, Para sails Aug. 11th, thence Curaçao, Trinidad, Colombia, Canal & U. S. Pacific

GULF SOUTH AMERICA LINE
(Swedish America Mexico Line)

Federal Express Co. — Gal. Agents

"Bonita" — Expected to sail B. Aires about July 6th, Montevideo July 10th, due Santos July 13th, sails July 19th, arrives & sails Rio 20th, calling Victoria July 22nd, sails same day direct for New Orleans.

THE BRITISH EXPORT GAZETTE.

GREAT BRITAIN'S LEADING EXPORT JOURNAL
FOUNDED 1892

MERCHANTS, IMPORTERS, and AGENTS in Brazil who are interested in the Trade of Great Britain, should Subscribe regularly to this old-established and influential publication. It provides its Subscribers with the most exhaustive and exclusive commercial news service and is the connecting link between British Manufacturers and Merchants in all parts of the world.

The Annual Subscription is 10s. or 25s. for Three Years, which includes unlimited use of its Information and Agency Departments

"The British Export Gazette" is invaluable to Buyers of British Goods and all who Want to Represent British Firms in Brazil
Head Offices: 76, FINSBURY PAVEMENT, LONDON, E. C. 2.

CAMBIO



TITULOS

Private & Public Titles transacted on all Brazilian markets. Sale of Coffee to the D. N. C., São Paulo & Santos dealers. Editors of the "Revista Financeira Levy", Boletim Comercial, Suplemento Levy (Dallies). Money transactions, Foreign & National on all markets of the world. Agents & Representatives in Rio de Janeiro, Bahia, Porto Alegre, Recife, Pará and all foreign Cities.

STOCK BROKERS

Rua 15 de Novembro, 59
SANTOS

CUSTOM HOUSE BROKERAGE OFFICE
Telegrams: "YVEL"

Rua Alvares Penteado, 20
SÃO PAULO

THE COMMERCIAL TELEGRAM BUREAUX

Supply Official Reports and Quotations of all the leading American, European, Brazilian and Indian Markets to the Cotton, Coffee, Grain, Produce, Provision, Petroleum and Sugar Trades of Europe and America: also re-transmit Private Despatches by Cable to multiple addresses in Europe and North and South America.



Subscribers furnished with Intermediate or Closing American Reports at night by special arrangements with London, Liverpool, or Amsterdam offices.

FOR TERMS &c., APPLY TO CHIEF OFFICE:

COMTELBURO, Limited, 11, Tokenhouse Yard, London I. C. 2 (open day and night)

Registered Telegraphic Address: "COMTELBURO" Telephs London Metropolitan 8244 (4 lines)

LONDON: 30 Mincing Lane, E. C. 3. Telephones
LIVERPOOL: 7, Rumford Str. 1983 Centr. (two)
NEW YORK: 66/70 Beaver Street, Hanover: 2-4450
AMSTERDAM: Spuistraat 4-3268Z.
HAVRE: Rue Victor Hugo, 136
ANTWERP: Rue des Douze Mois, 19. 11852
PARÁ: Avenida Castilhos França, 71. Caixa Postal
CEARÁ: Rua Major Facundo 680; Caixa Postal 198
PERNAMBUCO: Rua Vis. Itaparica, 207 Caixa 299

BAHIA: Rua Portugal, 16, Caixa 2 03
VICTORIA: Rua 1^a de Março, 46; Sala 8. C. Postal 40
RIO DE JANEIRO: Av. R. Branco, 33-1^a, C. 266
SANTOS: Rua Cidade de Toledo, 7, Caixa 243
S. PAULO: Rua 3 de Dezembro, 48, 1^a Caixa 1281
CURITYBA: Av. João Pessoa, 71; 2^a and. C. Postal 79
RIO GRANDE: Rua Riachuelo, 199; Caixa Postal 92
PORTO ALEGRE: R. Siqueira Campos 903, C. P. 500
B. AIRES: Bolsa de Comercio, 239, tel. U. T. 3 2340

THE CALORIC COMPANY

RIO DE JANEIRO

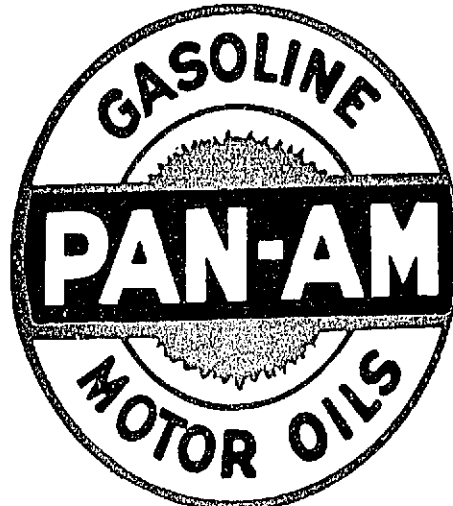
AVENIDA PRESIDENTE WILSON, 305 — 4º andar

Telegraphic Address:
"Petroloric"

P. O. Box 1060

Telephone 22-5133

Fuel Oil
For industries,
Railways, Steamers



Diesel Oil
For internal
Combustion Engines

Fuel Oil Stations at:

PARÁ, PERNAMBUCO, BAHIA AND SANTOS

LAMPOR T & HOLT LINE BRAZIL SERVICE

FROM GLASGOW AND LIVERPOOL to: Bahia, Rio de Janeiro, Santos, Rio Grande do Sul, Pelotas & Porto Alegre. From New York and South Atlantic Ports to Brazil and the River Plate.

SAILINGS	From Glasgow	From Liverpool	From New York	Due Rio	Due Santos
HARPENDEN	—	—	19th June	—	11th July
BALZAC	22nd June	29th June	—	20th July	22nd July
BONHEUR	26th July	27th July	—	17th Aug.	19th Aug.
LEIGHTON	17th Aug.	24th Aug.	—	15th Sept.	16th Sept.
BRUYERE	14th Sept.	21st Sept.	—	12th Oct.	14th Oct.
BRONTE	12th Oct.	19th Oct.	—	9th Nov.	11th Nov.

HOMeward SAILINGS

BRUYERE leaves Santos 15th July, Rio 17th July for Liverpool.
BRONTE leaves Santos 19th July, Rio 21st July for Liverpool.
LAPLACE leaves Rio about 22nd July for Glasgow.
LELAMBE leaves Santos about 27th July for Liverpool.

Cargo taken on through Bills of Lading, via Rio de Janeiro, to Aracajú, Victoria, Antonina, Paranaguá, São Francisco and Santa Catharina. All steamers, outwards and homewards, have accommodation available for Saloon Passengers at economic rates.

Apply to:—

Santos:
F. S. HAMPSHIRE & Co. Ltd.
Bahia:
F. STEVENSON & Co. Ltd.
Pernambuco:
WILLIAM & Co.

LAMPOR T & HOLT, LTD.
RIO DE JANEIRO
AV. RIO BRANCO. 46-4.º and.
Tel. 23-1980

S. Paulo:
F. S. HAMPSHIRE & Co. Ltd.
Buenos Aires:
LAMPOR T & HOLT LINE
Montevideo:
M. REAL AZUA.