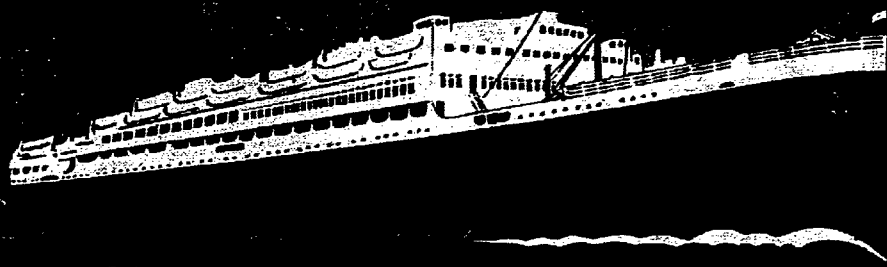


TO &  
FROM

E  
U  
R  
O  
P  
E



Southampton Service

London Service

ALCANTARA	6 May	HIGHLAND MONARCH	24 Apr.
ARLANZA	22 May	HIGHLAND CHIEFTAIN	8 May.
ALMANZORA	17 Jun.	HIGHLAND PRINCESS	22 May
ALCANTARA	1 July	HIGHLAND BRIGADE	5 June

SIRIS From Rio 24th April

Havre, Antwerp,  
Rotterdam, Ham-  
burg, U. K.

BRITTANY From Santos About 25th April

Havre & Liverpool

THE ROYAL MAIL STEAM PACKET COMPANY — Agents: ROYAL MAIL LINES, LIMITED.

RIO DE JANEIRO: AVENIDA RIO BRANCO 51/55 — TEL. 4-8000

ALSO AT SANTOS, SÃO PAULO, BAHIA, PERNAMBUCO, RIO GRANDE, ETC.

Born 1820 — Still going Strong!

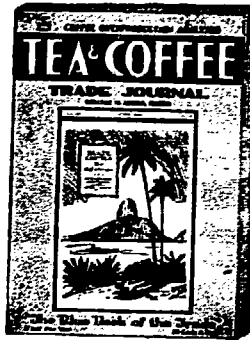


LEE BAY HOTEL, LEE:—Originally an old Manor House in North Devon associated with the Drake family. It commands magnificent views of crags and cliffs and sea.

HISTORICAL SPIRIT  
SERIES NO. 12.

Johnnie Walker: "Good-day, Sir Francis! Seeker of the Treasure Main."  
Shade of Sir Francis Drake: "Ah, JOHNNIE WALKER! you are now the main Treasure."

JOHN WALKER & SONS, LTD., SCOTCH WHISKY DISTILLERS, KILMARNOCK, SCOTLAND.



Government Officials, Bankers, Merchants and Publicists in 59 Countries Around the World

read The Tea and Coffee Trade Journal

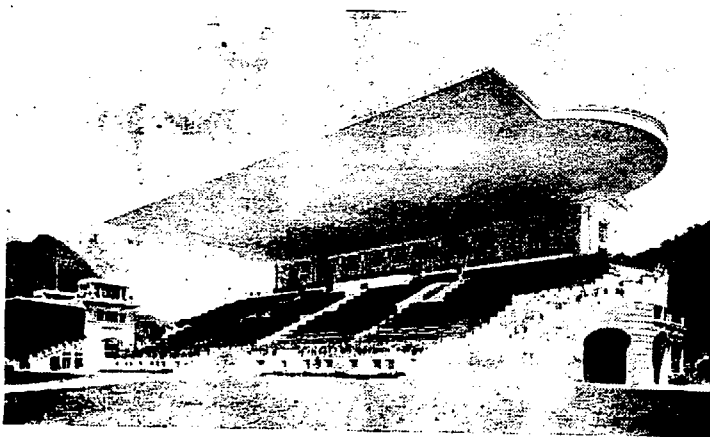
This paper is the greatest single factor for promoting good will in the tea and coffee trades. Its editor and publisher is

WILLIAM H. UKERS, M. A.

author, "All About Coffee" and "All About Tea" and for over 25 years, student, expert, advisor and counsellor on industrial and merchandising problems in the tea and coffee trades. An advertisement in The Tea & Coffee Trade Journal carries dignity and builds good will — "the only thing of permanent value".

SUBSCRIPTION IN BRAZIL, \$4 per year  
Advertising rates on application  
Agents for Brazil

WILEMAN'S BRAZILIAN REVIEW  
RUA TEÓFILO OTONI 11 RIO DE JANEIRO  
—  
THE TEA & COFFEE TRADE JOURNAL,  
79 WALL STREET, NEW YORK



BRAZILIAN JOCKEY-CLUB HIPPODROME

## FERRO-CONCRETE WORKS



BRIDGES, VIADUCTS, PIERS, DYKES,  
JETTIES, WATER-COURSES, TUNNELS,  
STADIUMS, BUILDINGS, DRYDOCKS,  
PALISADES ETC. ETC.

# CHRISTIANI & NIELSEN

CIVIL ENGINEERS AND CONTRACTORS

BAHIA — PORTO ALEGRE — RIO DE JANEIRO — SANTOS — SÃO PAULO  
BUENOS AIRES — COPENHAGEN — THE HAGUE — LE NINGRAD — LONDON —  
MELBOURNE — MONTEVIDEO — OSLO — PARIS — STOCKHOLM — WELLINGTON  
— HAMBURG —

# Wileman's Brazilian Review

A WEEKLY JOURNAL OF TRADE, FINANCE, ECONOMICS AND SHIPPING

VOL. 26

Monday, April, 23, 1934

N. 17



The hub of shopping activity in the Coffee Metropolis of Brazil — English spoken in all departments — Visitors are specially invited to make use of our British Library and Rest Rooms — Tea Rooms and Restaurant adjoining



## DEPARTMENTS

DRESSES & SPORTS WEAR  
TAILOR-MADES-COATS  
DRESSMAKING-FURS  
MILLINERY

UNDER WEAR  
BABY-LINEN  
CORSETS  
GIRLS DEPT.

SILKS  
MATERIALS  
HOSIERY  
GLOVES, ETC.

BOHEMIAN GOODS  
BAGS & VANITIES  
NEEDLE WORK  
PHOTOGRAPHY

COMPLETE  
OUTFITTING  
FOR MEN & BOYS  
TAILORING  
FOOTWEAR

Beauty Salon

Furniture  
& Carpets

Domestic  
Sections

Travel Bureau

## MAPPIN STORES - S. PAULO

London: 14, Henrietta St., W. — Branch at Rio de Janeiro Furniture & Furnishing only Rua Senador Vergueiro, 147

### NOTICE

Attention is called to the following:

In future the rule relating to payment of subscriptions being made in advance will be strictly enforced.

Every subscription order must be accompanied by a remittance covering amount of same, failing which the order will not be executed.

We are obliged to take this step owing to the great difficulty experienced in collecting overdue subscriptions, some being outstanding from as far back as the year 1932.

### NOTES

#### CURRENT EVENTS

*"He who incites to strife is worse than he who takes part in it".*

T. James

There is nothing fresh to chronicle in connection with world affairs in so far as they have any influence, direct or otherwise, on this country.

The U. S. A. remains still a great deal unsettled.

Ford's opposition to the working of N. E. A. continues to be a disturbing element.

The fact that the full amount of success anticipated by the Roosevelt administration has not materialized, is leading to strikes, which, though so far of no great magnitude, are straws showing how the wind blows. The unemployment question overshadows everything else and in an attempt to do something more to alleviate the distress and create work, President Roosevelt is asking Congress for another huge grant.

As naturally home problems are the most pressing, the U. S. A. is not much in the limelight where international affairs are concerned.

In Great Britain the question of the day seems to be the Army, Navy and Air estimates.

As Disarmament, in which Great Britain has given the lead, has, so far, proved a failure, there is a strong, growing conviction that England must increase all arms of her forces to a parity with the other great nations of the world.

All this agitation, however, is not affecting the trade and commerce of the country. A steady improvement in this is clearly noticeable. The trade within the Empire policy is proving very ef-

## Wileman's Brazilian Review

Established 1898

EDITOR — L. COURTNEY

OFFICES: R. THEOPHILO OTTONI, 41 3.º ANDAR  
RIO DE JANEIRO

Telephone: 3-1354 - Caixa do Correio (P. O. Box) 809  
Tel. Address: "REVIEW", Riojaneiro.

Redactor Responsavel: L. Courtney

Redação e Administração: R. Theop. Ottoni, 41-3.º

Subscription (Payable in Advance): —

Brazil, 100\$000 per annum. Abroad £ 5 per annum.  
Separate copies 2\$000. Back Numbers 2\$500 per copy.

### ADVERTISING RATES ON APPLICATION

#### AGENTS

SAO PAULO & SANTOS: — H. D. Weed & Cia. Ltda.,  
Rua Libero Badaró, 51-sob. São Paulo.

NEW YORK: — "The Tea and Coffee Trade Journal",  
79, Wall Street.

COPENHAGEN: — "The Scandinavian Shipping  
Gazette", 38 Vestre Boulevard.

... Notice: — The Editor is not responsible for Correspondence or Articles signed with the writer's name or initials, or with a pseudonym, or that are marked "Communicated". The Editor must likewise not necessarily be held in agreement with the views therein contained or with the mode of expression.

Original articles submitted for publication must be considered, unless otherwise arranged, exclusive to and the sole property of the Review.

In accordance with the Brazilian Press Law, no correspondence or contribution will be published in this Review unless authenticated by the date, name, and address of the contributor, though not necessarily for publication.

Announcements concerning subscribers and friends are inserted free of charge.

## Rio Cape Line Ltd.

Direct Cargo Service from Rio de Janeiro and Santos to South and East African Ports

THE JAPANESE STEAMER

### HAWAII MARU

(Under Contract)

Sailing 10th May 1934

Cape Town, Mossel Bay, Algoa Bay, East London, Durban, and Lourenço Marques

Followed by

### ARIZONA MARU

Sailing 9th June 1934

For further particulars apply to:  
HOULDER BROTHERS CO (BRAZIL) LTD.

Agents for the Rio Cape Line, Ltd.  
AVENIDA RIO BRANCO, 63/67

Telephones 4-5261 and 4-0769  
RIO DE JANEIRO

# MAILS during April & May 1934

## TO ENGLAND & EUROPE:

FROM	DEP. Rio	Ship	Destination	Phone Rio N°
B. A.	24	High. Monarch	London	4-8000
B. A.	25	Pionier	Antwerp	3-4827
B. A.	28	La Coruna	Hamburg	4-1582
B. A.	28	Cap Arcona	Hamburg	4-1582
B. A.	29	Formose	Havre	4-6207
B. A. May	2	Sierra Nevada	Bremen	4-6121
B. A.	2	Neptunia	Genoa	3-5840
Santos	3	J. Charlotte	Antwerp	3-4827
B. A.	6	Alcantara	Southampt.	4-8000
B. A.	6	Alsina	Marselles	3-2930
B. A.	7	Pssa. Giovanna	Genova	3-5840
B. A.	8	Zeelandia	Amsterdam	2-9900
B. A.	8	High. Chi ftain	London	4-8000
B. A.	9	Gen. Osorio	Hamburg	4-1582
B. A.	10	Lipari	Havre	4-6207
B. A.	12	Cte. Biancamano	Genoa	3-5840
B. A.	15	Avila Star	London	4-7200

## FROM ENGLAND & EUROPE:

FROM	Arrive Rio	Ship	DEP. Rio	Destina- tion	Phone Rio N°
Antwerp	23	Zeelandia	23	B. A.	2-9900
Marselles	23	Alsina	23	B. A.	3-2930
Hamburg	24	M. Pascoal	24	B. A.	4-1582
London	30	Avila Star	30	B. A.	4-7200
London	30	Hig. Princess	30	B. A.	4-8000
London	30	Avila Star	30	B. A.	4-7200
Genoa	30	Ct. Biancamano	30	B. A.	3-5840
Bremen	4	Madrid	4	B. A.	4-1722
Hamburg	7	Gen. S. Martin	7	B. A.	4-1582
Southampton	7	Arlanza	7	B. A.	4-8000
Hamburg	8	Monte Olivia	8	B. A.	4-1582
Havre	9	Kerguelin	9	B. A.	4-6207
Genoa	10	Oceania	10	B. A.	3-5840

## TO U. S. A. & JAPAN

FROM	DEP. Rio	Ship	Destination	Phone Rio N°
B. A.	26	Western World	New York	3-2000
B. A. May	3	Northern Pr.	New York	4-5261
B. A.	9	Hawaii Maru'	Afr. & Jap.	4-5261
B. A.	12	Delmundo	New Orleans	3-1455
B. A.	10	Southern Cross	New York	3-2000
B. A.	22	La Plata Maru'	Am. & Japan	4-7200

## FROM U. S. A. & JAPAN

FROM	Arrive Rio	Ship	DEP. Rio	Destina- tion	Phone Rio N°
New York	27	Southern Cross	27	B. A.	3-2000
Afr. & Japan	30	La Plata Maru'	30	B. A.	4-7200
Afr. & Jap. May	1	B. A. Maru'	1	B. A.	4-7200
N. Orleans	2	Delsud	2	B. A.	3-1455
New York	4	South. Prince	4	B. A.	4-5261
New York	11	Amer. Legion	11	B. A.	3-2000
N. Orleans	23	Delvalle	23	B. A.	3-1455
New York	25	West. World	25	B. A.	3-2000

## AIR-MAIL SERVICE

To & From South America

FROM	Service by	Arrive Rio	DEP. Rio	Destination
Pará	Panair	22	24	Pará
.....	Condor	—	24	Porto Alegre
U. S. A.	Panair	25	26	B. A.
Porto Alegre	Condor	25	26	Natal
Natal	Condor	26	27	Porto Alegre
B. A.	Panair	27	28	U. S. A.
Porto Alegre	Condor	28	—	.....
Europe	Air France	28	28	Chile
Chile	Air France	29	29	Europa
Pará	Panair	29	1	Pará

fective, if we are to judge from the fact that all parts of the Empire show improving commercial conditions.

The Budget surplus of £38,000,000, actually much more than the man in the street looked for, is more than satisfactory.

It is a striking testimony to the soundness of British Commerce and Policy.

The announcement as to the application of this surplus will prove very acceptable to the people in the country; in particular, the cut in the Income Tax and the restoration of unemployment benefits.

The position on the continent remains unchanged. Germany's proposed armaments increase is, of course, of paramount importance. France's silence on the matter is ominous.

An announcement that he intends to follow suit is daily expected, in spite of the fact that internal problems of the first magnitude are disturbing the Country.

It will be argued that German re-armament is all to the peril of France, and consequently must be first attended to.

A significant feature is the source of the funds permitting of the projected huge expenditure contemplated by Germany.

On her own showing she is bankrupt, unable to meet any of her foreign obligations, in fact defaulting all along the line. We do not refer to war debts — a highly contested issue — but to commercial and loan obligations.

Italy proceeds on her way quietly, steadily strengthening her position at home and abroad.

Mussolini has recently been accorded what amounts to a vote of confidence.

Voting for or against the Fascist regime resulted in 98% being in favour, a truly remarkable record.

Turning to Brazil, we find practically everything subordinated to the next Presidential elections.

Though the time is yet far off, the matter considered of such great importance that nothing else seems to be thought of.

A strong body of opinion appears to favour the continuance of the present regime. It has to be admitted that they have done well.

Brazil's commercial activities are being well looked after, as the prompt settlement of the points at issue with France shows.

Some change in the financial regulations is being eagerly looked for, as being the one factor now remaining necessary to substantial trade expansion.

Criticism of the recent ordinances as to servicing obligations have died down, possibly on a realisation of the advisability of accepting what can be definitely obtained.

The occurrence of strikes of railroad workers, though not, so far, of any great magnitude, proved sufficiently serious to cause a deal of inconvenience to the transport of passengers and goods.

While everything is now calm, experience has shown that at election periods in all countries, anything may happen.

Men's passions are inflamed, their judgement warped; fruitful soil for the operations of professional agitators.

## Information Branch of "Wileman's Brazilian Review"

In order to meet a growing and important demand from our readers, we have created a general Intelligence Department which will enable us to supply any information desired to SUBSCRIBERS and ADVERTISERS ONLY.

Our readers are well aware of the facilities at our disposal for obtaining first hand and absolutely reliable information in connection with all markets in Brazil, not to mention economic, commercial and industrial conditions. We are in a privileged position, therefore, to supply information by cable or letter on any subject, such as opening and closing prices of coffee and/or other produce, exchange, reports on market conditions or on any matter relating to this country.

It is to be understood that the intelligence or consulting branch of this Review will be at the disposal of SUBSCRIBERS and ADVERTISERS ONLY.

However, the benefits of stable government have, we think sunk too deeply into the minds of the people of Brazil to permit of malcontents ruling the day.

### THE LATE MR. EDWIN VERNON MORGAN

We regret to record the sudden demise of Mr. Edwin Vernon Morgan, the U. S. Ex-Ambassador, who during his long 21 years in office in Brazil gained so many friends by his well known loyalty and goodness to all.

Mr. Morgan had a great and fond heart for Brazil, Music Literature and the Arts, and his absence will weigh heavily upon all those who came into personal contact with such an appreciative nature.

### BRAZILIAN WINE

The wine industry of Brazil, as typified by the production in Rio Grande do Sul, is very promising.

As may be conceived the industry is controlled almost exclusively by Italians, who, with climatic and soil conditions in their favour, are producing wine that already compares very favourably with foreign products.

Attention is also called to the fact that the quality of the wine is being steadily improved.

The production over the last five years was.

1929.....	152,116	hectolitres
1930.....	135,595	"
1931.....	195,609	"
1932.....	118,141	"
1933.....	286,520	"

Calculated at 70\$000 per hectolitre, the value of the industry last year amounted to 20,000:000\$.



FOR A  
LONG, COOL  
DRINK

**WHITE HORSE**  
WHISKY  
CAVALLO BRANCO

### FUNDING

Received from the Ministry of Finance the following circular:

"By order of the Government the Bank of Brazil remitted to-day to their Representative Bankers in London the sum of £258,365 to cover "Funding" services during the month of April".

Rio de Janeiro, April 14th, 1934.

### BREVITIES

Former U. S. A. Ambassador to Brazil, Mr. Edwin Morgan, died April 16th in Petropolis, Rio de Janeiro.

37,500 bags of Brazilian Coffee bartered for wheat were auctioned in New York and sold between Dollar 11,26 to 11,31 per bag.

The French Government fixed coffee-import quotas for the month of April inst. in the following proportions:

48,000 quintals for Brazil, 25,000 quintals for Haiti and 140,000 quintals for Coffee of other origin.

Brazil enjoyed a quota of 84,000 for January, 10,000 for February and 20,000 for March last.

It is rumoured that in order to normalize surplus Coffee-stocks in Santos the D. N. C. will withdraw 1,500,000 of the 2,300,000 stored thereat. It remains to be seen under what form the D. N. C. will act.

April 13th saw exactly 103 years since Pedro I left Brazil on the British Ship "Volage", for Europe.

His son of 6 years Pedro II, having been proclaimed Emperor of Brazil on the 7th April 1831.

### Improved Suez and Panamá Canal Traffic.

Following a marked decrease in Tonnage passing through the above canals in the years 1930 to 1932 considerable improvement was shown last year. In the case of the Suez Canal this amounted to 8%, and the Panamá Canal to 12%, as compared with 1932.

For the 6 months ending December 1933, the Australian Trade Balance was £20,553,000 sterling favourable as compared with £6,539,000 in the Corresponding period of 1932.

British Exports of Food, drink and tobacco in February 1934 amounted to £2,570,000 being £43,000 (2%) less than in January 1934, and being £330,000, (15%) more than in February 1933.

The latter increase is said to be due to the Exports of spirits to U. S. A. the value of which was £584,000, more than a year ago, in January, there was a similar increase of £378,000.

Sir Woodman Burbidge, C. B. E. Chairman of Harrolds Ltd. has visited the Argentine relative to expansion of their business in Buenos Aires and the provinces.

As the Argentine venture has proved so effective, we would suggest that Sir Woodman looks into the possibilities in Brazil.

Imports of canned meats into the U. S. A. in 1933 amounted to 43,025,000 pounds. The year before the figure was 22,853,000 pounds, so that the imports last year had practically increased 100%.

Nearly all of the canned meat was beef, the Argentine and Uruguay being the principal shippers.

The Danish National Debt has increased by about 100% since 1914.

Increases were specially marked during two periods, the first between 1914 and 1924 and then between 1926 and 1929.

Danish exports in 1933 were fairly satisfactory, being about 17 Mill. Kr. more than the proceeding year.

For the information of an enquirer, the consideration of the tenders for the Brazilian Naval programme is likely to be a very long drawn out affair.

In furtherance of their plans for increasing their trade with Brazil, Italian interests are studying local conditions at first hand.

In connection with certain Brazilian development projects, we understand the Barter question will again be revived.

The adoption by Germany of the Naval and Military programme as announced, will, it is believed in responsible quarters, definitely provoke another world war.

For the year 1933, India's Balance of Trade

in her favour was £23,500,000, exclusive of her gold exports amounting to £37,500,000.

The actual figures were:

Exports .....	£110,500,000
Imports .....	£ 87,500,000

Iraq is another country with a Budget surplus for 1933 and generally improving trade conditions.

The oil pipe line in Iraq, leading to the Mediterranean, will shortly be completed and should result in greatly increasing the Country's prosperity.

Foreign Tourists visiting Italy during 1933 increased by 35% over 1932 figures.

2,528,000 Tourists entered Italy last year by direct route as against 1,905,000 the previous year.

Before the world crisis over one million Tourists from England visited France yearly. During 1931 only 870,000 crossed the Channel decreasing yet to 522,000 in 1932. Last year due to some money-exchange improvement this figure rose to 585,000.

Through Wilson Sons & Co. the "Casa da Moeda" (Govt. Mint) will receive 134 kilos of gold-bars, distributed in five cases, for a total value of 1,611,902,000. The metal was extracted from the Morro Velho mines in the States of Minas Geraes.

The "Central Station Pedro II" of the Central Rly of Brazil (Govt. owned) will be re-modernized. Offices are being moved to the "Associação Auxílios Mtuos Bldg".

The "Corn and Wheat Emancipation" plan drafted by Premier Mussolini is bearing fruit: Corn (yellow) imported during period July 1st, 1933 to February 28th 1934, quintals 975,094. Imported during same period 1932/1933 quintals 2,114,832.

As an indication of how infectious lawlessness and disorders are, we can point to the epidemic of strikes of recent occurrence. The Cia. Cantareira, the Leopoldina, the Central do Brazil.

The settlement of the Franco-Brazilian disputes has already resulted in improved commercial conditions between the two countries.

Reports of strikes in the U. S. A. are of daily occurrence, but, all, so far, have been found capable of settlement by negotiation.

President Roosevelt intends asking for a huge grant, round about \$1,500,000,000, to be spent in creating work for the unemployed.

The anxiety evidenced by Great Britain as to the projected increases in the German Army Navy estimates has brought forth explanations from Germany, submitted to England in a virtually private document.

KNOWN THE WORLD OVER

# FIVE O'CLOCK TEA (CHA' SOL)

UNEQUALLED AROMA, UNIQUE AMONG TEAS  
AND **that** CERTAIN FLAVOR YOU LIKE

ALWAYS STANDARD QUALITY

50 years of continuous success

FROM ALL GROCERY STORES

or directly from the Representative

ERNEST E. CROMACK

AVENIDA RIO BRANCO, 33

Phone 3.2638

RIO DE JANEIRO

SAMPLES FREE ON REQUEST

The British Budget surplus has been applied to reduction in income-tax, restoration of employment benefits and certain other popular measures.

The unfavourable publicity given to Soviet Judicial Methods by the recent prominent trials in that Republic, is undoubtedly, the reason why changes in same are announced. It will be interesting to note what reforms are actually adopted.

## LONDON FINANCIAL POSITION

6th April, 1934

The two main events of the past week have been the announcement of the Budget surplus for 1933-34 and the issue of a new British Government loan. The actual surplus is £38,897,728, for while the total revenue was £724,567,149, the expenditure was £685,669,421. The expenditure includes ..... £3,304,392 sent to the United States Government, for which payment power had been taken to borrow. This satisfactory result has naturally stimulated discussion of the extent to which taxation may be reduced, and cuts in salaries and unemployment pay may be restored, out of the prospective surplus of the financial year that has just started, because by law the realized surplus of the past year must go automatically to the reduction of debt.

The new loan was for £150,000,000 in 3 per cent stock, redeemable 1959.69, which was offered at 98, thus giving a flat yield of £3.1s.3d. per cent, while allowing for redemption, the full return is

£3.1s.10d. per cent. It was an almost immediate success, for the subscription list was closed 2½ hours after it opened, and on this occasion there were few applications by people ("stags") who merely went in to snatch the premium expected to rule on the new stock. At the same time it may prove that part of the issue was taken by public departments. The object of the loan was not disclosed in the prospectus, but it is generally assumed that it was mainly for the redemption of . . . . £105,000,000 of 4 per cent Treasury Bonds which will mature on April 15. The new loan has an effective sinking fund of 1 per cent to be applied when the stock is quoted at or below par, so that there is no chance of lasting capital depreciation. Existing gilt-edged securities appreciated at first on the announcement of the new borrowing, but afterwards reacted somewhat. Actually the market is very firm, for the demand for choice investments is rather in excess of the supply, especially as the few new loans that are issued are mainly for the purpose of replacing existing securities bearing a higher rate of interest.

Further there is no prospect of an early change in the monetary situation, despite the further improvement in trade. This improvement is exemplified in the latest figures of unemployment, which are the most favourable since October 1930, the returns of country bank clearings, a trustworthy index of trade conditions, and the home railway traffics. As to the last named, the total receipts of the four grouped systems showed an increase for the past week (which includes Good Friday) of . . . . £533,000, while even when the figures are compared with Good Friday week of 1933, an increase of £215,000 is indicated. The people may not have more money at their disposal than a year ago, but

judging from the above figures they are spending more at holiday times — an undoubted sign of strengthened confidence.

It is difficult to avoid contrasting our financial position with that of the United States of America, France and Germany. Those three countries have heavy Budget deficits, and in the case of Germany the economic position is so serious as to point to the probability of a further reduction in the sums transferred for debt payments. The latest return of the Reichsbank shows a further loss of £850,000 (at par) in the gold exchange holdings, thus reducing the amount to the equivalent of £12,260,000 against £36,932,250, a year ago, and lowering the note cover ratio to the exceptionally low figure of 6.7 per cent. When Dr. Schacht, the President of the Reichsbank, meets representatives of Germany's creditors shortly, he will almost certainly make the most of this position. It is significant, however, that Germany proposes to spend large sums in increasing the efficiency of the military, air and police forces.

Rather less attention is being given to the situation in America, though developments there are closely watched, and the possibility is not ignored of an increase in America's buying price of gold for the purpose of depreciating the currency still further. This may explain a resumption recently of sales of dollars to exchange into sterling. As time goes on the impression strengthens that recovery in America may come irrespective and not because of, the monetary policy of the authorities.

Our industrial company reports on the whole are still satisfactory. Among the important exceptions are those of the Cunard Steam Ship Co., the Associated Electrical Industries (which is under American control) and Amalgamated Anthra-



# Furness Prince Line

NEW YORK-SOUTH AMERICA

**LUXURIOUS ACCOMMODATION — FIRST CLASS PASSENGERS ONLY**

RIO — NEW YORK 13 DAYS

## NORTHERN PRINCE

WILL SAIL ON MAY 3RD FOR TRINIDAD AND NEW YORK

## SOUTHERN PRINCE

DUE FROM NEW YORK MAY 4TH FOR SANTOS, MONTEVIDEO  
AND BUENOS AIRES

TRIANGULAR TOURS — NEW YORK — EUROPE — BRAZIL AT SPECIAL RATES

# Houlder Brothers & Co. (Brazil) Ltd.

Rua do Comércio, 35 — SANTOS

2001 & 3728

Avenida Rio Branco, 63-67 — RIO DE JANEIRO

Tel. 4-5261 and 4-0769



**THOMAS DRAPER**

MINING ENGINEER

Caixa Postal 2955 — Rio de Janeiro

cite Collieries. Many other undertakings announce increased profits and some have raised their dividends. Business in home industrial shares is still active, but it tends to concentrate in particular groups. At one time motor and aviation shares are favoured, and at another those of companies that are expected to benefit from the Government plan of slum clearance and re-building.

For no ostensible reason Brazilian Government bonds have developed some weakness. A possible explanation is that of late the speculative element in markets has concentrated more upon some other foreign government securities, particularly the low-priced railway loans of China, which have appreciated considerably. Argentine rails have continued rather depressed, and following the example of the B. A. Gt. Southern and the B. A. Western, the Central Argentine announces that no interim dividends will be paid on its preference stocks. It may be recalled that holders of the 4 ½ p. c. preference are still awaiting payment of last year's dividend, which was declared, but the distribution of which is withheld until sufficient funds for the purpose are available on this

side. Although the railway stocks have been dull there has been continued support for Argentine Government bonds, particularly Port of the Capital 5 per cents, while U. K. and Argentine Trust certificates have also appreciated. The demand is partly explained by the increasing difficulty of obtaining other reasonably safe securities to yield about 5 per cent.

**DECREES****Decree 23.573 of December 12th, 1933.**

Authorises Alfonso Ferreira Paulino without privileges to purchase rent, or lease, the Farm known as the "Fazenda da Rocinha", property of José André da Costa, and the Farm known as the "Fazenda Bom Sucesso" property of Dr. Francisco C. Duarte Badaró, both in the Municipality of Minas Novas, State of Minas Geraes, so to search and explore for Gold as well as to organise a Society or Company to carry out the contracts they may obtain.

**Decree 23.613 of December 20th, 1933**

Approves the new project and budget relating to the Works and Installations necessary to build a Port in Macció, Bay of Jaraguá, in the State of Alagoas, with modification of clause VI of the contract completed by virtue of Decree 23.159 of the 16th November 1933.

**Decree 23.798 of January 24th 1934.**

Approves the plans for accessory Installation-

**MUNSON S.S. LINE**

The only North - American Luxurious Liners

— on the "BRAZIL - NEW - YORK" route —

21 Thousand Tons each — First, Tourist, & Third Class Accommodation — Special prices for TRIANGULAR VOYAGES "RIO-NEW YORK-EUROPE-RIO" or

"RIO-EUROPE-NEW YORK-RIO"

**WESTERN WORLD**

due from River Plate April 26th, 1934 will sail the same day for Trinidad & New York

**SOUTHERN CROSS**

due from New York April 27th, 1934 will sail the same day for Santos, Montevideo & Buenos Aires

TO FOLLOW :

**SOUTHERN CROSS**

due from River Plate May 10th, 1934, will sail the same for Trinidad & New York

**AMERICAN LEGION**

due from N. Y. May 11th, 1934, will sail the same day for Santos, Montevideo & Buenos Aires

FOR RATES &amp; FURTHER INFORMATION

**The Federal Express Co****RIO DE JANEIRO — SANTOS — SÃO PAULO**

## RIO DE JANEIRO LIGHTERAGE COMPANY LIMITED

Lighterage Contracts, Stevedores, Tug and  
Launch Owners, Salvage Operators.

III

Fleet—150 Lighters: 18,000 tons total capacity.

**RAPID HANDLING OF CARGO  
GUARANTEED.**

Salvage Tug "Emily" equipped with Modern  
Salvage Appliances.

III

RIO DE JANEIRO  
**Av. Rio Branco, 9-2nd. floor,  
Room, 232**

P. O. BOX 1164

TELEGRAMS — "LIGHTERAGE  
RIO-JANEIRO".

Codes — BENTLEY'S, A. B. C. 4th Edit:  
LIEBER'S, A. 1.

LONDON — Dashwood House, Old Broad  
Street, E. C. 2.

III

ENQUIRIES INVITED.

in the "Airport" of Rio de Janeiro in order to aid,  
repair and supply "Airships".

### Decree 23.873 of February 15th 1934

Provides for organization of the Council of  
National Defence.

### Decree 23.899 of February 21st, 1934

Approves the regulations for the collection  
and supervision of the Taxes relating to Transport.

### Decree 23.896 of February 20th 1934.

Authorises, without privileges, José Gonçalves  
de Mello, to contract with the Government of the  
State of Minas Geraes, in order to explore and  
work for Gold in the "Rio das Velhas" in an ex-  
tent of 25 kilometers down-current starting from  
Bridge on the Automobile-Road Bello Horizonte,  
Morro do Pilar in the State of Minas Geraes, as  
well as to organise a Company to carry out any  
contracts they may obtain.

### Decree 23.900 of February 21st, 1934.

Approves the regulations for the Collection  
and Supervision of taxes relating to Traffic.

### Decree 23.933 of February 27th, 1934.

Promulgates the Commercial Treaty arrived  
at, between Brazil and Portugal, at Rio de Janeiro,  
on the 26th August 1933.

### Decree 23.936 of February 27th, 1934.

Deciding that authorizations for contracts re-  
lating to exploitation of mineral mines be subje-  
cted to conditions,

### Decree 23.938 of February 28th, 1934.

Approves the new regulations that modify the  
dispositions given by Decree 22.916 of the 11 July  
1933, (re. Roasting and Grinding of Coffee).

### Decree 23.953 of March 2nd. 1934.

Opens, to the Ministry of Traffic and Public  
Works, a special credit of rs. 12.556:000\$000 for  
the maintenance and subsidizing of Works and  
other Services, during the period January-March  
1934.

### Decree 23.954 of March 2nd. 1934.

Approves of the projects and budget to the  
amounts of £2.417.0.0. (and Rs. 1.951:215\$900).  
for the execution of various Works, Installation of  
apparatus, and acquisition of material, by the "Leo-  
poldina Railway Co. Ltd.

### Decree 23.954 of March 7th, 1934.

Opens, to the Ministry of Foreign Affairs a  
special Credit of Rs. 3.758:314\$400, for the pay-  
ment of expenses relating to hospitality of Illus-  
trious international visitors and others of a like  
nature.

### Decree 23.966 of March 7th. 1934.

Creating a second Bureau for the exaction of  
Federal Revenue in Jundiaby, State of São Paulo.

### Decree 23.971 of March 7th, 1934.

Authorises, without privileges Messrs. Byin-  
gton & Co, to purchase lands, in the localities  
known as "Taquary", "Coqueiros", "Pouso Ale-  
gre" and "Ponte Alta", in the City of Caldas, mu-  
nicipality of Caldas, in the State of Minas Geraes,  
now belonging to D. Maria Luiza Rietz, in order  
to search and explore mines Zerconio.

### Decree 23.975 of March 7th, 1934.

Authorises, without privileges, the Society  
"Co-Brazil" — (Companhia de Mineração e Metal-  
lurgia "Brazil") to contract search and work Sil-  
ver and Lead Mines, existing in the lands in the  
co-possession of José Leandro and others, situated  
in the district of Guapiara, Municipality of Campo  
Bonito, State of São Paulo.

### Decree 23.980 of March 8th, 1934.

Opens, to the Ministry of Education and Pu-  
blic Health a special credit of Rs. 1.755:162\$500  
to support Permanent Services Expenses for first  
3 months of 1934, previously administered by way  
of Special Credits.

### Decree 23.981 of March 9th, 1934.

Regulates the carrying out of Decree 23.533 of  
the 1st of December 1933 (Economical Readjust-  
ment).

### Decree 23.997 of March 13th, 1934

Promulgates the Extradition Treaty between  
Brazil and Sweden signed at Rio de Janeiro on  
23th July 1932.

### Decree 24.000 of 13th March 1934

Authorises the Company Siderurgica Belgo-  
Mineira, S. A. to purchase the water falls, named

# American Republics Line

OPERATED BY

C. H. SPRAGUE & SON, Inc.

BOSTON, Mass.

for the

## United States Shipping Board

Regular Cargo Steamers Service

between

THE ATLANTIC COAST

PORTS of the United States,

BRAZIL and the RIVER PLATE

General Agents for Brazil

### American Steamship Agencies Co. Inc.

Rua 15 de Novembro, 176  
Santos

Rua da Quitanda, 202  
Rio de Janeiro

Cable Address: "Amagencies"

# DELTA LINE

"Floating Bungalows"

Owned and Operated by

## Mississippi Shipping Co. Inc.

RIO to NEW ORLEANS in 18 days  
WITH ONE STOP AT VICTORIA

Passengers — Mail — Freight

NEXT SAILINGS:

Southbound

"DELSUD" May 2, 1934

"DELVALLE" May 23, 1934

Northbound

"DELMUNDO" May 12, 1934

"DELSUD" June 2, 1934

For further particulars apply to

### American Steamship Agencies Co. Inc.

Rua da Quitanda, 202 Rio de Janeiro  
Rua 15 de Novembro, 176 SANTOS

Or at our General Passenger Agents  
Serviço Int. de Viagens G. BERNSTORFF

"Furado" in the Municipality of Caeté, State of Minas Geraes, for production of Electrical Power.

#### Decree 24.015 of March 15th, 1934.

Authorises the completion of Contract to establish and carry out the "Aereal Line" "Belem-Manãos".

#### Decree 24.016 of March 15th, 1934.

Authorises the completion of Contract to establish and carry out the "Aereal Line" "São Paulo-Cuyabá" via Campo Grande and Corumbá.

#### Decree 24.024 of March 21st, 1934.

Opens, to the Ministry of Finance a supplementary credit to the amount of Rs. 1.126:338\$200 for the purpose of legalising the Expenses already effected.

#### Decree 24.030 of March 22nd, 1934.

Grants to the Soc. Anon. "Air France" authorization to function in the Republic of Brazil.

#### Decree 24.031 of March 22nd, 1934.

Opens, to the Ministry of Agriculture, a special Credit of Rs. 300:000\$000 for supporting expenses in connection with construction of the Experimental Works for Irrigation of the North East.

#### Decree 24.036 of March 26th, 1934.

Reorganises the Services of the general Administration of National Finances, and provides for measures connected there with.

#### Decree 24.038 of March 26th, 1934.

Demanding the deposit of a sum in national currency equivalent to the value of bills in foreign currency, at the exchange-rate of the day, to be made in the Bank bearer of bills depositing must be effected on the date of expiry of all bills, in foreign currency either at sight or term, exacted from imports of merchandise in any Brazilian locality.

#### Decree 24.062 of March 29th, 1934.

Approves the budget of receipts and expenses of the Republic of United States of Brazil for the administrative year 1934-1935.

#### Decree 24.023 of March 21st, 1934.

Exemptions and or Reductions in Customs Duties.

(Continuation)

Chap. V

Art. 20) The exemption of Duties on the materials imported by the Federal Government, and other matters therein provided.

Art. 21) The Exemption or reductions of Duties on the materials imported by State Governments, Municipalities and the Federal District will be conceded subordinate to request by the respective Chief Executives.

Art. 22) These requests must be clear and legally drafted accompanied by a full detail, in duplicate indicating the name and nationality of the Vessel, the date of entry into Port, the Warehouse

## INTERESTING TO ADVERTISERS

WILEMAN'S BRAZILIAN REVIEW, the only Journal of its kind in South-America, circulates in 31 different countries of the World and in 123 key-cities and Towns:

31 in Brazil	4 in France
17 in U. S. A.	3 in Holland
14 in the United Kingdom	2 in Switzerland
	2 in South-Africa
7 in Sweden	2 in Argentina
6 in Finland	2 in Belgium
6 in Germany	2 in Egypt
4 in Italy	3 in Denmark
4 in Norway	3 in Venezuela
4 in Japan	

and 1 each in Uruguay, Guatemala, Chile, Perú, Salvador, Austria, Czechoslovakia, Latvia, Rumania, Australia, Java, India, Turkey and Dutch East Indies.

No words are needed to illustrate the productive possibilities of advertising the columns of

WILEMAN'S BRAZILIAN REVIEW.  
ADVERTISE & BENEFIT YOURSELF

or place where the Goods have been deposited, the number of volumes with their "mark", quantity and species or nature, the quantity and specification of the material must be declared with their weight, dimensions and value.

Art. 23) Approval shall be granted through declaration by the Customs House Inspectors will, the essential formalities of despatch as to justify Exemptions of the Duties for the materials imported:

a) — By Embassadors, Ministers, Commercial Attachés, Secretaries and others in Diplomatic Missions, accredited to, and with the Government of Brazil.

By Consul-Generals, Consuls or Vice-Consuls of Rank, of Friendly nations, when requested by the Ministry of Foreign Affairs.

b) — By Military Missions, when requested by the respective Ministers, or by Chiefs of the Missions above referred to if such has been stipulated in a contract or Agreement.

c) — By the Rockefeller, Gaffree-Guinde Institutes, and others of a like nature, legally constituted, upon request by their Chiefs or Directors.

d) — By Consuls, or in their absence, the Commanders of Airships, Navigable Balloons, Ships, schools and Recreative-ships, that voyage under the National Navy Colours of friendly Nations.

Art. 24) Other Exemptions or reductions of Duties will follow ordinary routine consisting of request indicating compulsorily, under penalty of summary refusal.

a) — The name of the Company, Society, Firm or individual that claims the benefit, his social standing or office.

b) — The name and nationality of the ship that conveys the material and date of its entry.

c) — The warehouse or place where the material has been deposited.

d) — The place of the Services and the purpose of the material.

e) — The legal disposition, or Contract on which the petition is founded.

f) — Date of the registration of the Contract if any, in the Court of Justice.

§ 1st— The request must be accompanied by:

a) — Detail, in duplicate, correctly stamped, without alterations, or erasures, of the material to be despatched, with marks, number, quantity species and total weight of each volume (parcel) quantity, quality, liquid weight or measure, and the value of the merchandise in full.

b) — Plans and Budget of Expenses of the work or Services that have to be installed or modified whichever the case may be.

§ 2° — When the case implies Services to be executed, by virtue of the Contract closed with the State Government, Municipality, or of the Federal District, these details must bear the signature of the respective fiscalization Agent, if any.

25) — No exemption or reduction of Duties will be conceded unless the petition is accompanied by a technical certificate declaring:

a) the nature and application of the material.

b) the definite characteristics of the services or works for which it was imported.

c) if quantity asked for is proportional to the plan of the services or works, when this is the case.

d) if it contains extra-stocks or exigencies indispensable to the proper carrying out of the services or works.

e) to have been examined in the plan they have been stored when the certificate has been expedited in conformity with the letter "c" of art. 26.

Special paragraph.

These certificates are not to be demanded on merchandise stated in 1 to 18, 20 to 31, 39 to 42, and 42 to 46 of article 12, and 1 to 9, 11, 17 to 20, and 22 of article 13 of this Decree.

Art. 26 — The technical certificates will be passed when:

—a) Referring to companies or firms fiscalized or inspected by the Federal Government by the respective Departmental Inspectors, within the space of eight days, under penalty of personal responsibility of the certifying official.

— b) Referring to companies or firms that have signed contracts with the Federal Government, in which exists a clause of permanent inspection by the respective Inspectors, within eight days under penalty of disposing of the functions of the Inspector, and.

c) all others by the official designated by the Inspector of Customs, must be passed with clarity and precision, and presented in the maximum term of 5 days, counting the date or receipt of the process, under penalty of the transference to another "Official", losing the remuneration, and cancelling the register of his title in "Customs".

Special Paragraph — The technical certificate may be dispensed with in the case of item "c" when the material verified have certain proper application and are of easy distinction.

Art. 27 — Upon approval of the process in the form as established by Regulations in force, final statement will be realised by the customs Inspector.

§ 1° Statements shall be exactly as requested for full-payment of Duties properly com-

puting the Duties due as per documents signed by the Inspector.

§ 2° Statement as for previous item must be accompanied by documents proving exemption or reduction of duty, copy of which shall be attached to the bill of sale and shipment, with a copy of final decision by the Inspector.

§ 3° After payment of duties or fees the documents will be returned to the officials in charge of this service for necessary remarks, after which they shall be distributed and forwarded for acknowledgement.

#### CHAPTER VI

The Industrial Corporation, Companies, or Firms, exploiting the Extraction of Petroleum, Coal, Manufacture of Cement and plain glass.

Art. 28 — The Industrial Corporation, Companies, or Firms constituted in accordance with the laws of the Country, within 5 years, for the extraction of petroleum, Coal, manufacture of Cement and plain glass will be conceded the benefits of item 32, art. 12, for the same period of time, so long as besides the obligations of general character, the following requirements are satisfied by means of a contract:

—a) give tangible proof of the legal existence of the Corporation, Company, or Firm, with definitive evidence of their Registration or documents accordingly.

—b) to prove that their minimum realised capital amounts to ten thousand contos of réis ..... (Rs. 10.000:000\$000).

—c) to present, in duplicate copy to the examination of the Ministry of Agriculture, all plans, detail of Expenses, Specifications, and any other details concerning the construction Installations, and functions of the manufacturing or Factory Service, inclusive of enlargements, Extensions, alterations or modifications of the Installations, which will be considered approved, for all the effects, if not disputed, or impugned, by Ministerial despatch, within the space of 70 days, counting the day of presentation to the Competent Department.

The functionary causing delay of any nature prejudicing the National Treasury will be held responsible for same. After approval said documents will be passed on to the Ministry of Finance.

—d) to sell to the Federal Government, for their own use, up to 30% of the annual production of the Factories, at prices not over and conditions not under those by which the product of their manufacture are sold to wholesalers and Jobbers.

—e) to subject themselves to Government Inspection (or Fiscalisation), freely allowing the Inspector or whichever functionary legally authorised to visit and inspect the works or offices of the establishments, lending and giving clearly all the information solicited even when referring to registers or record-books.

—f) to employ, in their services, not less than 80% of Brazilian Employees, and to maintain in the works, not over 10 young apprentices, as well as three technicians that have already concluded the course in Industrial Engineering, (Chemical Industries) with the best results in the Polytechnic School of the University of Rio de Janeiro, or in others that have same standing, or in the

**SPEED is ECONOMY**

**TELEGRAPH AND TELEPHONE**

VIA RADIOGRAMS ENGLAND

BRASIL

The **DIRECT** Route to all parts of the world.

**CIA RADIOTELEGRAPHICA BRASILEIRA**

course of Chemistry annexed to the Superior School of Agriculture and Veterinary Medicines, or in other courses of the same standing for the period of one year for each technician and a gratification of not less than 500\$000 per month, to each.

Directors of the mentioned Schools will propose to the Minister of Finance, the candidates apt for designation, before the 15th April in each year.

*To be continued*

#### LONDON PRODUCE NOTES

April, 6th, 31.

The London Produce markets were generally quiet immediately following the Easter holidays.

**SUGAR** — The sugar market displayed further weakness under fair offerings of raws and an absence of demand. Meanwhile, Licht estimates the sowings for the coming Continental beet crop at 1,602,000 hectares, excluding Russia, compared with 1,191,010 hectares last season. Production in Cuba up to the end of March amounted to 1,200,000 tons with 121 Centrals still grinding. During the week a few thousand tons of foreign 96 per cents, April, sold from 19 3/4 to 16 3/4d per cwt, c. i. f. Refiners reduced their quotations 3d per cwt but trading was only moderate.

**RUBBER** — The rubber market was firmer on reserve of sellers and higher American and Eastern advices but business was limited. Smoked

sheet, spot, sold from 5 7/32d to 5 3/8d per lb. and closed at the best. Shipments from Malaya and Ceylon during March were again heavy and amounted to 65,469 tons compared with 47,125 tons a year ago. Normally, an increase of this dimension would have a depressing influence upon the trend of events but the market at the moment is relying upon the introduction of restriction at no distant date and this fact completely off-sets any statistical influence.

**TEA AND COFFEE** — The tea market was practically closed this week whilst in the coffee market only a small trade was reported. Public auctions re-commence next week. Brazilian sorts eased and the market was quiet; superior Santos, prompt quoted 47/6 per cwt, f. o. b.

**COCOA** — Cocoa futures were easier under selling pressure following heavy shipments during March from the Gold Coast. These amounted to 31,956 tons against 18,584 tons a year ago. There was, however, more doing in the shipment section; good fermented, May/June, sold up to 24s per 50 kilos, c. i. f., Continent.

**JUTE** — Jute opened with a firm tone on reserve of holders and higher Calcutta cables. Sellers held out for an advance of 5s to 7/6 per ton but buyers were reluctant to pay the advance and values eventually receded and closed with little change on balance. The temporary embargo on imports into Germany has seriously affected Continental business for the time being. Business this week was negligible.

**HEMP** — Hemp was very dull and prices tended in buyers favour; Manila, grade K., April/June, being quoted £13 15s. per ton, c. i. f.

**TIMBER** — The market for mahogany logs was quiet with prices fully maintained for wood of character. Arrivals of hardwoods quite moderate. East Indian teak sold slowly and inquiries for forward shipment were negligible; in planks and conversions standard specifications were in poor demand, the majority of the orders being for special requirements. American hardwoods were

**FOR KEEPING UP-TO-DATE**

With the latest news  
from your homeland  
and for listening to  
your favorite music  
you only require

**THE**

**NEW**

**RADIO**

Request a demonstration in your own home from  
**SOC. ERICSSON DO BRASIL, LTD.**

Rua General Camara, 58      Tel 4-1930  
RIO DE JANEIRO

in slow request and existing stocks much in excess of requirements.

**FRUIT** — Oranges in steady demand, small fruit slightly firmer in value; Denia and Valencia 240's, 12s. to 26s.; bloods, 240's, 11s. to 14s. 3d.; Murcia 240's, 11s. to 22s.; Cyprus 200/226's, 13s. 9d. to 14s. 3d. per box. Pears; Argentine Williams 11s. 6d. to 14s. 6d. per box. Bananas sold steadily at about previous rates; Canary 12s. to 13s. 6d. per crate; Jamaica 9½d. to 10½d., and Brazilian 6d. to 8d per dozen. Grape fruit was dearer; Jaffa 54/64's, 10s. to 14s.; Jamaica 70's, 10s. 6d. per box. Imports from Brazil last week 30,000 bunches of bananas.

**HIDES** — Conditions were slightly firmer with a fair business transacted. Frig-type hides were a little dearer at 4.9/16d., for Rosario ox, and 4¾d. for B. A. ox and cows. Higher prices were asked for dry River Plates and B. A. Americanos are at 5¾d., B. A. Becerros at 6¼d, and Cuyabanos at 5½d. Brazils and other South Americans were generally quiet. A good demand prevailed for Capes with first and second dries at 6¼d and 5¼d., respectively.

## The City of Santos Improvements Company, Limited

ESTADO DE SÃO PAULO — CAIXA, 4 — SANTOS

**GAS DEPARTMENT.** Special coke and tar produced by the continuous carbonization process: Also soft pitch for waterproofing purposes, crude benzol and oils for the manufacture of disinfectants.

**WATER DEPARTMENT.** — Distribution on the constant supply system. Special cheap rates for industrial supplies. Ships supplied with water of guaranteed purity, at the rate of 150 tons per hour if required.

**ELECTRICITY DEPARTMENT.** — Installations of any magnitude for Light and Power. Cheap power for longhour consumers. Motor repairs.

**TRAMWAYS DEPARTMENT.** — Seventy kilometres of rapid electric service. Season tickets with non-stop service. Special terms for large parties, parcel delivery; service to all points. Electric transport of goods and building material at cheap rates. Goods from interior should be despatched "Companhia City Desvio Saboc".

**MOTOR OMNIBUS SERVICES:** Town Avenues and Beach.  
Telegraphic Address "CIDADE" — Santos

## THE FOREIGN TRADE OF BRAZIL

EXPORTS BY DESTINATION F. O. B. VALUE IN CONTOS AND POUNDS STERLING

TWELVE MONTHS — JANUARY TO DECEMBER

Destination by Countries:—	— Contos of réis —			— £ 1.000 sterling —		
	1931	1932	1933	1931	1932	1933
United States .....	1.487.533	1.173.129	1.309.569	21.613	16.789	16.716
France .....	311.071	224.878	256.634	4.589	3.268	3.266
Germany .....	314.225	223.618	228.920	4.573	3.257	2.905
United Kingdom .....	240.133	175.826	212.894	3.561	2.572	2.677
Holland .....	188.081	102.497	130.690	2.731	1.483	1.642
Argentine .....	203.498	149.894	151.066	2.942	2.195	1.855
Italy .....	134.846	94.981	91.629	1.947	1.360	1.152
Uruguay .....	123.748	91.258	89.218	1.865	1.328	1.168
Belgium .....	100.216	65.489	81.430	1.457	954	1.008
Sweden .....	76.855	48.308	69.360	1.115	704	878
Denmark .....	43.114	19.995	30.006	625	284	386
Dantzic .....	1.938	2.343	4.834	27	35	61
Spain .....	25.022	20.547	7.599	359	287	101
Finland .....	7.370	16.748	22.043	105	250	288
Greece .....	5.535	573	7.201	81	8	83
Yugo-Slavia .....	3.725	1.156	2.739	55	16	33
Malta .....	573	265	1.336	9	4	16
Norway .....	7.994	6.070	5.733	114	87	71
Polland .....	118	7.248	9.390	2	112	123
Portugal .....	15.923	10.243	12.132	231	149	153
Roumania .....	502	1.334	1.934	7	19	25
Turkey in Europe .....	6.243	4.302	5.754	89	62	67
Canadá .....	10.845	3.398	5.179	153	50	66
Chile .....	12.190	12.211	7.582	178	174	97
Colombia .....	1.787	852	945	27	12	11
Japan .....	3.240	3.626	4.269	45	54	60
Syria .....	975	449	691	14	6	9
Turkey in Asia .....	1.860	1.965	2.002	26	29	23
Algeria .....	23.513	29.677	25.702	341	433	330
Canary Island .....	2.278	2.775	2.569	33	40	33
Egypt .....	6.802	7.872	7.901	97	114	99
Mozambique .....	1.867	1.601	1.243	27	24	16
Morocco .....	2.632	2.499	3.116	41	37	40
Tunis .....	2.149	2.541	2.350	31	37	30
Union of South Africa .....	21.476	19.207	18.622	304	285	235
Australia .....	300	77	261	5	1	3
Sundry Countries .....	7.802	7.313	5.728	125	111	70
<b>TOTAL</b> .....	<b>3.398.164</b>	<b>2.536.765</b>	<b>2.820.291</b>	<b>49.544</b>	<b>36.630</b>	<b>35.790</b>
<i>Recapitulation:</i>						
Africa .....	62.546	67.925	62.924	900	995	801
North and Central America .....	1.499.982	1.176.871	1.314.981	21.788	16.844	16.785
South America .....	341.654	254.788	249.425	5.019	3.718	3.139
Asia .....	6.724	9.420	7.874	96	141	103
Europe .....	1.485.958	1.027.684	1.184.806	21.736	14.931	14.959
Oceania .....	300	77	261	5	1	3
<b>TOTAL</b> .....	<b>3.398.164</b>	<b>2.536.765</b>	<b>2.820.271</b>	<b>49.544</b>	<b>36.630</b>	<b>35.790</b>

## WILEMAN'S BRAZILIAN REVIEW

THE MIRROR OF BRAZILIAN BUSINESS

Subscription abroad £ 5/

BRAZIL 100\$000

Paid in advance with order.

## EXPORTS BY ORIGIN

F. O. B. VALUE IN CONTOS OF REIS AND POUNDS STERLING

TWELVE MONTHS - JANUARY TO DECEMBER

Origin by sea-board States:—	— In contos of réis —			— In £ 1.000 sterling —		
	1931	1932	1933	1931	1932	1933
Amazonas .....	42.484	24.879	34.542	636	357	433
Pará .....	57.690	33.617	48.712	848	491	607
Maranhão .....	32.608	17.821	12.751	490	256	163
Piauí .....	—	—	1.884	—	—	25
Ceará .....	56.208	24.640	36.551	842	357	440
Rio Grande do Norte .....	10.572	2.509	9.334	152	35	107
Parahyba .....	10.508	2.819	11.145	155	41	125
Pernambuco .....	58.096	38.592	34.372	848	571	448
Alagoas .....	2.798	4.229	3.268	41	64	38
Sergipe .....	653	309	138	10	5	2
Bahia .....	207.143	198.245	170.775	2.980	2.894	2.162
Espirito Santo .....	168.614	179.520	149.792	2.430	2.616	1.929
Rio de Janeiro (Angra dos Reis) ..	10.576	38.553	18.436	144	568	246
Rio de Janeiro (Capital) .....	597.923	616.976	506.259	8.708	9.100	6.402
S. Paulo .....	1.751.928	1.120.674	1.564.665	25.486	15.900	19.914
Paraná .....	107.421	89.488	76.068	1.550	1.286	956
Sa Catharina .....	37.138	30.319	26.162	541	443	324
Rio Grande do Sul .....	238.639	108.815	113.979	3.580	1.578	1.451
Matto Grosso .....	7.189	4.760	1.438	103	68	18
Grand Total .....	3.398.164	2.536.766	2.820.271	49.544	36.630	35.790

## ORIGIN OF EXPORTS BY PRODUCING ZONES

F. O. B. VALUE IN CONTOS AND POUNDS STERLING

TWELVE MONTHS, JANUARY TO DECEMBER

PRODUCING ZONES:	IN CONTOS OF REIS					IN £ 1.000 STERLING				
	1929	1930	1931	1932	1933	1929	1930	1931	1932	1933
I—Coffee, Meat and Mining:										
Espirito Santo, Rio de Janeiro, São Paulo and Minas Geraes .....	2.789.673	1,910.281	2,529,041	1,955,723	2,239,152	68,526	43,089	36,678	28,184	28,491
II—Cattle and Cereals:—										
Paraná, Santa Catharina, Rio Grande do Sul, and Matto Grosso ..	497,422	485,666	390,367	233,382	217,647	10,746	11,095	5,774	3,375	2,749
III—Sugar, Cotton, Cocoa and Tobacco:—										
Rio Grande do Norte, Parahyba, Pernambuco, Alagoas Sergipe and Bahia .....	402,402	328,892	289,770	246,703	229,032	9,890	7,405	4,186	3,610	2,882
IV—Rubber and Nuts:—										
Amazonas, Pará, Maranhão and Ceará .....	290,765	182,515	188,986	100,957	134,440	5,669	4,157	2,816	1,461	1,668
Total .....	3,880,267	2,907,954	3,398,164	2,536,765	2,820,271	94,831	65,746	49,544	36,630	35,790



**DESTINATION OF IMPORTS BY PRODUCING ZONES**  
**C. I. F. VALUE IN CONTOS CURRENCY AND £1.000 STERLING**  
**TWELVE MONTHS, JANUARY TO DECEMBER**

PRODUCING ZONES:	IN CONTOS OF REIS					IN £ 1.000 STERLING				
	1929	1930	1931	1932	1933	1929	1930	1931	1932	1933
<b>I—Coffee, Meat and Mining</b>										
Espirito Santo, Rio de Janeiro, São Paulo and Minas Geraes . . . . .	2,711,201	1,777,533	1,448,126	1,221,713	1,749,399	66,594	40,637	22,078	17,499	22,742
<b>II—Cattle and Cereals:—</b>										
Paraná, Santa Catharina, Rio Grande do Sul and Matto Grosso . . . . .	333,327	218,838	182,584	112,567	160,345	8,188	5,001	2,780	1,607	2,073
<b>III—Sugar, Cotton, Cocoa and Tobacco:—</b>										
Rio Grande do Norte, Parahyba, Pernambuco, Alagoas, Sergipe and Bahia . . . . .	378,644	263,978	189,229	141,993	192,845	9,301	6,075	2,949	2,035	2,499
<b>IV—Rubber and Nuts:—</b>										
Amazonas, Pará, Maranhão and Ceará . . . . .	104,566	83,356	60,995	42,421	62,665	2,570	1,906	949	613	816
<b>Total</b> . . . . .	<b>3,527,738</b>	<b>2,343,705</b>	<b>1,880,934</b>	<b>1,518,694</b>	<b>2,165,254</b>	<b>86,653</b>	<b>53,619</b>	<b>28,756</b>	<b>21,744</b>	<b>28,132</b>

**IMPORTS BY DESTINATION - (Customs Districts)**  
**C. I. F. VALUE IN CONTOS CURRENCY AND £ STERLING**  
**TWELVE MONTHS — JANUARY TO DECEMBER**

CUSTOMS DISTRICTS:	— In contos of reis —			— In £1.000 sterling —		
	1931	1932	1933	1931	1932	1933
Amazonas . . . . .	7,519	4,125	7,449	115	59	96
Pará . . . . .	27,810	20,416	27,865	435	293	364
Maranhão . . . . .	7,273	5,424	7,607	114	78	100
Piauhv . . . . .	2,684	1,242	1,895	42	18	25
Ceará . . . . .	15,709	11,214	17,849	243	165	233
Rio Grande do Norte . . . . .	6,020	1,700	5,499	93	24	70
Parahyba . . . . .	15,699	10,773	14,248	243	152	185
Pernambuco . . . . .	99,412	77,485	104,648	1,531	1,110	1,355
Alagoas . . . . .	11,547	7,428	11,236	183	106	146
Sergipe . . . . .	2,459	2,422	2,024	39	34	27
Bahia . . . . .	54,092	42,185	55,190	860	609	716
Espirito Santo . . . . .	3,240	2,414	1,848	51	34	25
Rio de Janeiro (State) . . . . .	439	2,878	9,935	8	44	129
Rio de Janeiro (Capital) . . . . .	748,069	772,320	936,748	11,395	11,235	12,214
S. Paulo . . . . .	696,378	444,101	800,768	10,624	6,176	10,374
Paraná . . . . .	16,424	15,561	17,624	258	222	226
Sta. Catharina . . . . .	13,402	11,403	14,541	203	164	185
Rio Grande do Sul . . . . .	148,100	83,325	123,774	2,247	1,189	1,665
Matto Grosso . . . . .	4,658	2,278	4,406	72	32	57
<b>Grand Total</b> . . . . .	<b>1,880,934</b>	<b>1,518,694</b>	<b>2,165,254</b>	<b>28,756</b>	<b>21,744</b>	<b>28,132</b>

**IMPORTS BY DESTINATION - (Customs Districts)**  
**C. I. F. VALUE IN CONTOS CURRENCY AND £ STERLING**  
**TWELVE MONTHS — JANUARY TO DECEMBER**

	— In contos of réis —			In £1,000 sterling —		
	1931	1932	1933	1931	1932	1933
United Kingdom	326.846	292.498	419.611	5.018	4.175	5.469
Germany	194.830	136.461	263.461	3.014	1.960	3.371
Belgium	62.049	59.942	113.775	955	856	1.489
Austria	567	862	1.392	9	12	18
Dantzic	2.367	51	6.264	37	1	80
Denmark	2.306	4.143	10.915	37	89	158
Spain	17.638	17.188	24.523	255	253	301
Finland	13.510	14.316	15.412	199	201	202
France	86.621	77.354	107.677	1.345	1.104	1.435
Greece	474	220	1.364	7	3	17
Holland	64.641	47.857	84.098	1.003	698	1.081
Italy	78.906	61.657	86.206	1.197	872	1.132
Norway	11.868	16.514	19.269	197	234	260
Portugal	26.098	32.511	47.128	394	469	603
Sweden	17.581	16.126	22.447	276	232	291
Switzerland	21.505	16.156	33.808	324	230	435
United States	472.436	456.912	455.400	7.190	6.566	5.958
Mexico	28.726	15.147	30.826	423	219	406
Dutch Possessions (America)			19.306	1	1	2
Newfowadland	16.672	19.208	20.497	311	273	273
Argentina	277.096	113.058	277.130	4.207	1.606	3.549
Peru	18.947	13.108	22.715	269	189	301
Uruguay	10.180	9.100	8.311	161	132	104
Venezuela	59.897	50.851	24.576	904	719	340
British India	25.836	18.942	16.072	392	263	209
Japan	4.787	5.542	12.281	70	82	154
New Zealand	506		1.986	7		25
Other countries	37.548	22.970	18.804	554	334	468
<b>TOTAL</b>	<b>1,880.934</b>	<b>1,518.694</b>	<b>2,165.254</b>	<b>28.756</b>	<b>21.744</b>	<b>28.132</b>
<b>RECAPITULATION:</b>						
Europe	947.324	801.626	1,260.185	14.557	11.482	16.378
North & Central America	523.831	497.925	531.324	7.982	7.149	6.928
South America	368.131	188.844	337.245	5.585	2.684	4.355
Asia	38.752	28.002	32.744	587	398	422
Africa	2.384	2.295	1.770	37	31	22
Oceania	511	2	1.986	8		27
<b>TOTAL</b>	<b>1,880.934</b>	<b>1,518.694</b>	<b>2,165.254</b>	<b>28.756</b>	<b>21.744</b>	<b>28.132</b>

# JOHNSON LINE



FLEET: 15 MOTOR SHIPS

Finland, Poland, Sweden-Brazil, Finland, Poland,  
**TOTAL TONNAGE 108,600 TONS**

Regular Service Between  
 Sweden-River Plate, Sweden-Norway-North Pacific,  
 and vice-versa.

## Outward Sailings From Sweden:

PACIFIC — 14th April.  
 SANTOS — 23rd April.

## Sailings for Sweden & Finland:

### From Rio:

VALPARAISO — 26th April.  
 PEDRO CHRISTOPHERSEN — 7th May

For further particulars apply to the Agents: —  
 Williams & Co., Pernambuco, Gueudeville & Co.,  
 Bahia; Hard Rand & Co., Victoria; Johnson Line  
 Agencies, Santos; Wigg Brothers, Rio Grande, and or

## LUIZ CAMPOS FILHOS & CO.

RUA 1.º DE MARÇO, 117 — RIO DE JANEIRO

# C O D F I S H

## BRAZILIAN IMPORTS JANUARY 1934

Origin	Kilos	Value cif.
Germany .....	7.687	12:117S
G. Britain .....	464.142	838:260S
Norway .....	120.810	236:512S
Newfoundland .....	493.986	784:135S
<b>Total</b> .....	<b>1.086.625</b>	<b>1.871:024S</b>
Equivalent in £ .....		20.246
Destination		
Pará .....	1.450	3:481S
Recife .....	29.986	45:599S
Bahia .....	409.240	653:210S
Rio de Janeiro .....	442.393	777:449S
Santos .....	152.056	273:111S
Pelotas .....	51.500	118:174S
<b>Total</b> .....	<b>1.086.625</b>	<b>1.871:024S</b>

### IMPORTS BY ORIGIN IN TONS

#### JANUARY 1933 AND 1934

Origin	1933	1934	1934
			+ or -
Canada .....	—	—	—
Germany .....	—	7.687 +	7.687
G. Britain .....	618.874	464.142 —	154.732
Newfoundland .....	493.986	— +	493.986
Norway .....	364.525	120.810 —	243.715
Sundries .....	29.814	— —	29.814
<b>Total</b> .....	<b>1.013.213</b>	<b>1.086.625 —</b>	<b>73.412</b>

### BRAZILIAN IMPORTS — 1930 TO 1934

#### JANUARY

Years	Kilos	Value cif.	£
1930 .....	3.657.232	7.971:422S	186.571
1931 .....	4.031.665	7.241:470S	145.207
1932 .....	3.997.025	6.213:843S	80.159
1933 .....	1.013.213	1.548:083S	23.912
1934 .....	1.086.625	1.871:024S	20.246

# C E M E N T

## BRAZILIAN IMPORTS — JANUARY 1934

Countries of shipment	Tons.	Value cif.
Germany .....	28	5:086S
Belgium .....	1.518	203:501S
Denmark .....	212	20:801S
U. States .....	132	59:685S
G. Britain .....	4.105	401:247S
Holland .....	170	15:516S
Italy .....	5	2:285S
Sweden .....	797	76:807S
<b>Total</b> .....	<b>6.967</b>	<b>784:928S</b>
Equivalent in £ .....		8.494

### Destination

Manáos .....	99	17:087S
Pará .....	5	2:285S
Maranhão .....	50	10:043S
Fortaleza .....	30	9:071S
Çabedello .....	1.247	162:214S

# SÃO PAULO RAILWAY

## The Main Artery of the State of São Paulo

**F**REQUENT Passenger Services between São Paulo and Santos and the Interior of the State.  
 Rapid, Reliable, Freight Services.  
 Door to Door Collection and Delivery of Baggage, Parcels and Merchandise.

### CONSIGN YOUR GOODS "S. P. R."

Information:—

S. P. R. Estação da Luz - Caixa "C"

## São Paulo

Recife .....	1.971	188:958S
Maceió .....	92	17:181S
Bahia .....	1.014	96:037S
Rio de Janeiro .....	135	58:349S
Santos .....	77	12:073S
Rio Grande .....	595	55:853S
Porto Alegre .....	1.652	155:757S
<b>Total</b> .....	<b>6.967</b>	<b>784:928S</b>

### IMPORTS BY ORIGIN — IN TONS — JANUARY

Origin	1933	1934	1934
			+ or -
Germany .....	339	28 —	311
Belgium .....	360	1.518 +	1.158
Denmark .....	91	212 +	121
U. States .....	269	132 —	137
France .....	29	— —	29
G. Britain .....	5.181	4.105 —	1.076
Holland .....	99	170 +	71
Italy .....	—	5 +	5
Norway .....	352	— —	352
Sweden .....	2.623	797 —	1.826
Sundries .....	51	— —	51
<b>Total</b> .....	<b>9.394</b>	<b>6.967 —</b>	<b>2.427</b>

### BRAZILIAN IMPORTS — 1930 TO 1934

#### JANUARY

Years	Tons.	Value cif.	£
1930 .....	55.916	5.982:898S	140.030
1931 .....	17.034	2.310:481S	46.330
1932 .....	9.949	1.358:442S	17.524
1933 .....	9.394	955:467S	14.758
1934 .....	6.967	784:928S	8.494

FINEST AND LARGEST ASSORTMENT OF

**BLUE AQUAMARINES**

Diamonds, Topazes, Amethysts, etc. (Aquamarine necklace purchased by Duchess of Westminster.)

**BRAZILIAN CURIOSITIES: HUMMING-BIRD DESIGNS — A NEW FEATURE IN BRAZILIAN CURIOS**

Cigar and Cigarette cases, Pouches, purses and handbags made from reptile skins. Wood carving, Skins, Wooden lamps of Paraná, etc.

Rare Collections of Brazilian Butterflies and Moths

(Collections of same were purchased by H. R. H. the Prince of Wales, also by President Hoover)

Come and see our display, close to the Avenida and opposite to the Flower Market.

(We execute special designs to your order)

**ZITRIN IRMÃOS**

110 — 112 RUA BUENOS AIRES 110 — 112

## THE LEOPOLDINA RAILWAY COMPANY

## Estimated Weekly Traffic Receipts

YEAR	WEEK ENDED	RECEIPTS FOR WEEK			TOTAL FROM 1ST JANUARY
		Currency	Exchange	Sterling	
1934	14th. April	1 193.000\$	4.1732d.	£ 20.039	£ 347.887
1933	15	1 57.000\$	5.9732d.	£ 18.858	£ 374.047
Increase		236.000\$		£ 1.181	£
Decrease		\$	1 1/4d.	£	£ 26.160

**Money Market**

16th April 1934

Date	London		90 d/s	Sight	Dollars
	N. York				
April 9th . . . .	5.17- <sup>7</sup> / <sub>8</sub>	59\$592	60\$000	11\$580	
" 10th . . . .	5.17- <sup>3</sup> / <sub>8</sub>	59\$592	60\$000	11\$600	
Afternoon rate	—	59\$592	60\$000	11\$620	
April 11th . . . .	5.16- <sup>1</sup> / <sub>4</sub>	59\$592	60\$000	11\$620	
" 12th . . . .	5.16- <sup>1</sup> / <sub>2</sub>	59\$592	60\$000	11\$620	
" 13th . . . .	5.16- <sup>3</sup> / <sub>8</sub>	59\$592	60\$000	11\$620	
" 14th . . . .	5.15- <sup>—</sup> / <sub>8</sub>	59\$592	60\$000	11\$650	

The above are opening rates on London.

In the Semi Official market rates ruled same as last week only small business being registered. Agios ruling 12\$700 to 12\$900 on Sterling 2\$800 to 2\$900 on dollars.

**BANK OF BRAZIL****REDISCOUNT DEPARTMENT**

Balance Sheet as at 14th April, 1934

**ASSETS**

Bank of Brazil: Current account	312.740\$580
Securities rediscounted . . . . .	101.700:406\$120
General Expenses . . . . .	587\$600
	<b>102.013:734\$300</b>

**LIABILITIES**

National Treasury . . . . .	100.000:000\$000
Reserve Fund . . . . .	517:849\$330
Rediscounts . . . . .	1.495:884\$970
	<b>102.013:734\$300</b>

**IMMIGRANTS ENTERED THROUGH THE PORT OF RIO DE JANEIRO DURING YEAR 1933**

Portuguezes . . . . .	6.844
Brazilians . . . . .	1.087
Poles . . . . .	884
Spaniards . . . . .	594
Italians . . . . .	586
Germans . . . . .	525
Japanese . . . . .	471
Roumenians . . . . .	169
Libanese . . . . .	155
Austrians . . . . .	155
Argentines . . . . .	146
Sirians . . . . .	57
French . . . . .	44
North-Americans . . . . .	43
Uruguaians . . . . .	41
Swiss . . . . .	40
Czekoslovak . . . . .	39
Russians . . . . .	38
Hungherians . . . . .	32
English . . . . .	24
Finnish . . . . .	18
Danes . . . . .	11
Turks . . . . .	11
Belgians . . . . .	10
Lithuanians . . . . .	9
Sweeds . . . . .	9
Bolivians . . . . .	8
Chinese . . . . .	8
Lussemburg . . . . .	8
Jugoslavs . . . . .	7
Lettons . . . . .	7
Bulgarians . . . . .	6
Esthonians . . . . .	6
Hollanders . . . . .	6
Greeks . . . . .	5
Palestinians . . . . .	4
Chileans . . . . .	3
Ukrainians . . . . .	3
Persians . . . . .	1
Mexicans . . . . .	1
Venezuelans . . . . .	1
S. Salvador . . . . .	1
Egyptians . . . . .	1
Danzic . . . . .	1
Cubans . . . . .	1
Total . . . . .	<b>12.107</b>

## BANKING MOVEMENT

## Balance Sheets of Principal Banks including Branches in Brazil

31st MARCH 1934

(IN CONTOS OF REIS)

	Cash	Discounts and Loans	Sight Deposits	Fixed Deposits	% of cash to sight Deposits
Bk of Brazil .....	457.666	2.638.004	2.147.098	245.130	21.3
Italo-Belge .....	67.517	53.380	72.701	3.128	92.8
Hollandische v Z. A. ....	6.746	32.195	18.466	0.095	36.5
Deutsche Ueberseeische .....	52.793	130.104	103.797	51.385	50.9
Portuguez do Brazil .....	16.390	36.761	30.330	4.098	54.0
Française et Italienne .....	62.554	185.925	140.183	47.181	44.6
Commercial E. de S. Paulo .....	100.659	259.215	210.221	22.049	47.9
Com e Industria S. Paulo .....	60.069	302.738	243.075	34.313	24.7
Hyp. e Agricola Minas Geraes .....			not yet published		
Com. e Ind. Minas Geraes .....	22.071	111.786	74.178	44.436	43.2
Bk of S. Paulo .....	24.323	134.216	92.084	25.380	26.4
Deutsche Suedamerikanische .....	42.218	75.121	68.005	30.715	62.1
<b>TOTAL</b> .....	<b>913.006</b>	<b>3.959.445</b>	<b>3.200.138</b>	<b>513.910</b>	<b>28.5</b>

## BALANCE SHEETS FOR RIO CITY ONLY

31st MARCH 1934

(IN CONTOS OF REIS)

	Cash	Discounts and Loans	Sight Deposits	Fixed Deposits	% of cash to sight Deposits
Bk of London & S. America .....	56.363	76.667	103.125	6.961	54.7
British of S. America .....	35.274	29.986	56.520	10.599	62.4
Canadian of Commerce .....	11.315	6.714	13.898	—	81.4
Royal of Canada .....	23.767	36.280	51.231	2.256	46.4
National City of N. York .....	97.790	40.948	74.086	804	132.0
Mercantil Rio Janeiro .....	39.646	83.903	90.266	6.498	43.9
Boavista .....	13.074	74.840	61.558	4.259	21.2
Comercio Rio Janeiro .....	1.030	7.516	4.776	734	21.6
Credito Mercantil .....	2.869	8.849	10.153	3.373	28.3
Com. e Ind. Rio Janeiro .....	3.628	36.289	15.514	3.342	23.4
<b>TOTAL</b> .....	<b>284.756</b>	<b>401.992</b>	<b>481.127</b>	<b>38.826</b>	<b>59.2</b>

## DEN NORSKE SYD - AMERIKA LINJE

(The Norwegian South America Line)

Regular Service to Denmark, Finland, Norway, Baltic, River Plate &amp; vice-versa with 8 fast going modern diesel motor liners.

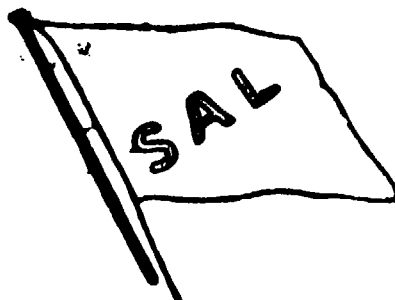
## NEXT SAILINGS

## FOR RIVER PLATE

m/s "CRUX" - 1st of May

m/s "BRA-KAR" 14th of May

For further particulars apply to



## NEXT SAILINGS

## NORWAY &amp; BALTIC

FOR FINLAND, DENMARK,

m/s "COMETA" 4th of May

m/s "NORMA" 15th of May

FREDRIK ENGELHART &amp; CIA. — RUA S. PEDRO N. 9 — RIO JANEIRO

ALEX S. GRIEG &amp; CIA. — PRAÇA DA REPUBLICA, 51 — SANTOS

## THE RIO MONEY MARKET

Exchange rates sight, Rio on:	April 7 1934	April 14 1934	April 14 1933
London (per)	59\$592 60\$000	59\$592 60\$000	45\$376 45\$782
Paris	— \$775	— \$775	— \$540
Italy	— 1\$020	— 1\$015	—
Belgium (gold)	— 2\$745	— 2\$750	— 1\$910
Portugal	— \$552	— \$550	— \$430
New York	— 11\$640	— 11\$650	— 13\$300
Buenos Aires (paper)	— 3\$535	— 3\$535	— 3\$520
Sweden	—	—	—
Japan	— 3\$700	— 3\$700	—
Spain	— 1\$600	— 1\$610	— 1\$160
Switzerland	— 3\$800	— 3\$800	— 2\$645
Hamburg (Reichmark)	— 4\$660	— 4\$650	— 3\$240
Montevideo	— 6\$600	— 6\$600	— 6\$500
Holland	— 7\$947	—	—
Value of sovereign, buyers	— 115\$000	— 115\$000	— 104\$000
Discount Bank of England	— 2%	— 2%	— 2%
Do Bank-France	— 3%	— 3%	— 2½%
Do Bank-Spain	— 6%	— 6%	— 6%
Do Bank-Italy	— 3%	— 3%	— 4%
Do Bank Germany	— 4%	— 4%	— 4%
Do London Market	— 15/16%	— 15/16%	— 17/32%
Do New York Market	— ⅛%	— ⅛%	— ½%

## THE STOCK MARKET

The Stock Market	1934	1934	1933
London	April 7	April 14	April 14
Brazil Funding 1893 5%	89.10.0	93.0.0	Holiday
Ditto, 1914 new	73.10.0	77.5.0	"
Conversion, 1910, 4%	17.10.0	18.15.0	"
Ditto, 1908, 5%	—	—	"
Federal District 5%	28.0.0	30.0.0	"
Anglo-South Am. Bk. Ltd. ord.	0.6.3	0.6.0	"
Brazil Traction, ord.	11.25	11.12	"
Great Western of Brazil Ry. Co. ord.	—	—	"
Lampport & Holt Ltd. 6% Ccm. Pref.	—	—	"
S. Paulo Coffee Estates Co. Ltd. 7%	89.5.0	91.0.0	"
Cables Wireless Teleg. Co., Ltd.	10.0.0	9.17.6	"
Western Telegraph Co. Ltd., 4% Deb. Stock Red.	101.0.0	101.0.0	"
Brazilian Warrant Agency & Finance Co., Ltd., ord.	0.2.3	0.2.3	"
Rio de Jan. City Imp. Co. Ltd., ord.	0.14.6	0.14.6	"
Imperial Chemical Ind. Ltd.	1.17.1½	1.18.0	"
S. Paulo Railway	79.0.0	79.0.0	"
Leopoldina Ry, 6.1½% Term. Deb. 1933	80.0.0	78.0.0	"
Rio de Janeiro Flour Mills	1.18.3	1.18.0	"
Bank of London & South America	4.15.0	4.15.0	"
Royal Mail	2.10.0	2.10.0	"
British War Loan 3½% 1927-47	104.5.0	104.7.6	"
Consols 2½%	80.12.6	80.7.6	"

## RIO DE JANEIRO STOCK MARKET QUOTATIONS (OFFERS) AT THE RIO STOCK EXCHANGE

on Saturday 14th April, 1934

Uniformisadas 5 %	830\$	826\$
Ferrovias Rail-way Bonds.	—	1:025\$
Sundry issues, bearer	840\$	836\$
Ditto to nom.	830\$	828\$
Treasury Obligation (1921)	—	1:000\$
Ditto, 1932	—	1:005\$
Ditto, 1930	1:020\$	1:015\$
Rodovias.	970\$	—
Tratado da Bolivia 3%	—	650\$
Ditto, to bearer	—	—
State of Rio 100\$000, bearer	108\$	107\$5
Ditto, dec. 3.216	1:000\$	960\$
Ditto 500\$ 8%	460\$	—
Ditto 500\$ 6%	—	—
M. Geraes 9% obligations	1:007\$	1:003\$
Ditto, 7% nom.	890\$	870\$
Ditto, 7% bearer	850\$	845\$
Ditto, 1:000\$ 5%, nom.	—	700\$
Ditto, bearer	710\$	—
Ditto nom.	710\$	700\$
Municipal Loan, 6% 1906, bearer	158\$	—
Ditto, 5%, dec. 1914	—	157\$
Ditto nom.	158\$	—
Ditto 1904., £ 20, nom.	—	450\$
Ditto, bearer	—	480\$
Ditto, 6%, 1917	—	157\$
Ditto, 6%, 1920	—	162\$
Ditto, 1931, bearer	199\$	198\$
Ditto, dec. 1.535	184\$	182\$
Ditto dec. 1.550	—	180\$
Ditto dec. 1.622	—	—
Atlantica	—	172\$
Ditto, dec. 1.628, 6%	—	149\$
Ditto, dec. 1.948, 7%	—	179\$
Ditto, dec. 3.264	175\$5	175\$
Ditto, dec. 2.097, 7%	—	180\$
Ditto, dec. 2.093, 8%	—	193\$5
Ditto, dec. 1.933	196\$	194\$
Ditto, dec. 1.999	—	173\$
Ditto, dec. 2.339, 8%	182\$	179\$
Espirito Santo 6%	—	665\$
Ditto 8%	850\$	800\$

## THE BRITISH EXPORT GAZETTE.

GREAT BRITAIN'S LEADING EXPORT JOURNAL  
FOUNDED 1892

**M**ERCHANTS, IMPORTERS, and AGENTS in Brazil who are interested in the Trade of Great Britain should Subscribe regularly to this old-established and influential publication. It provides its Subscribers with the most exhaustive and exclusive commercial news service and is the connecting link between British Manufacturers and Merchants in all parts of the world.

*The Annual Subscription is 10s., or 25s. for Three Years, which includes unlimited use of its Information and Agency Departments*

**"The British Export Gazette" is invaluable to Buyers of British Goods and all who Want to Represent British Firms in Brazil**  
Head Offices: 76, FINSBURY PAVEMENT, LONDON, E. C. 2.

Petropolis, 4% . . . . .	—	190\$	Integridade . . . . .	280\$	240\$	Sul Mineira de Ele- ctricidade (ord.) . . . . .	—	170\$
Pelotas 1:000\$ . . . . .	840\$	—	União dos Proprieta- rios . . . . .	—	260\$	Sul Mineira de E'e- ctricidade (pref.) . . . . .	—	200\$
Porto Alegre, 500 8% . . . . .	435\$	427\$	Continental . . . . .	—	—	Usinas Nacionaes . . . . .	390\$	—
Dec. 846 . . . . .	—	1:000\$	Brazi! (70%) . . . . .	45\$	—	Caxambu . . . . .	65\$	60\$
Alfegrette . . . . .	—	1:000\$	Guanabara . . . . .	—	70\$	B. Artfactos de Borracha . . . . .	—	55\$
S. Leopoldo 8% . . . . .	—	1:000\$	Textiles:—			Luz Starica . . . . .	210\$	—
Gravataty 8% . . . . .	—	1:000\$	Aliança . . . . .	96\$	—	Minas de S. Mathilde . . . . .	190\$	—
Iguassú 100\$ . . . . .	90\$	—	Corcovado . . . . .	—	55\$	Usina Santa Luzia . . . . .	385\$	300\$
Petropolis (E. do Rio) 1918 . . . . .	200\$	190\$	America Fabril . . . . .	200\$	—	Debentures:—		
Campos E. do Rio . . . . .	—	190\$	Brazil Industrial . . . . .	—	435\$	Cervejaria Brahma . . . . .	—	1:025\$
Bagé (8 %) . . . . .	850\$	—	Esperança . . . . .	—	180\$	Docas Santos . . . . .	205\$	200\$
Terresopolis (8%) . . . . .	185\$	—	Progresso Industrial . . . . .	160\$	130\$	Manufatura . . . . .	200\$	190\$
Bello Horizonte . . . . .	850\$	830\$	Petropolitana . . . . .	—	75\$	Mercado Municipal . . . . .	215\$	200\$
Banks:—			Confiança Industrial . . . . .	—	—	Nova America . . . . .	—	1:000\$
Brazil . . . . .	398\$	396\$	Manufatura . . . . .	—	132\$	T. Confiança In- dustrial . . . . .	95\$	75\$
Funcionarios . . . . .	47\$	46\$	Nova America . . . . .	—	180\$	Tec. Progresso In- dustrial . . . . .	192\$	—
Portuguez . . . . .	—	128\$	Tijuca . . . . .	20\$	10\$	Fluminense F. Club . . . . .	72\$	65\$
C. Real de M. Geraes . . . . .	—	—	Industrial Mineira . . . . .	50\$	20\$	Bellas Artes . . . . .	216\$	213\$
Economico . . . . .	40\$	35\$	Taubaté Industrial . . . . .	—	510\$	Tecidos Corcovado . . . . .	—	160\$
Mercantil . . . . .	—	440\$	Industrial Campista . . . . .	35\$	20\$	Tecidos Alliança . . . . .	—	140\$
Commercio . . . . .	130\$	128\$	Sundry:			Hoteis Palace . . . . .	—	203\$
Bôa Vista . . . . .	545\$	530\$	Holerith . . . . .	1:200\$	1:060\$	Industrial Campista . . . . .	—	110\$
Regional . . . . .	—	120\$	Docas de Santos, bearer . . . . .	260\$	—	Edificadora . . . . .	—	145\$
Railways:—			nom . . . . .	250\$	—	Tecidos Magéense . . . . .	120\$	—
M. S. Jeronymo . . . . .	116\$	114\$	Mercado Munic pal Terras e Coloniza- ções . . . . .	250\$	240\$	Cotonificio Gavea . . . . .	210\$	200\$
Victoria a Minas . . . . .	10\$	—	Caixa Central de Reservas . . . . .	180\$	—	Santa Helena . . . . .	—	160\$
Insurance:—			Docas da Bahia . . . . .	—	—	Magéense . . . . .	—	100\$
Previdente . . . . .	2:500\$	2:400\$	Phymatosan . . . . .	—	300\$	Brasil Commercial e Immobiliario, 11% . . . . .	1:020\$	—
Varegistas . . . . .	1:500\$	1:300\$	C. Brahma . . . . .	—	405\$	Antarctica Paulista . . . . .	192\$	—
Argos Fluminense . . . . .	3:000\$	2:600\$	União Industrial . . . . .	—	8:010\$	Tijuca . . . . .	—	40\$
Garantia . . . . .	80\$	60\$				Usinas Nacionaes . . . . .	202\$	—
Sagres . . . . .	400\$	300\$						
Confiança . . . . .	—	200\$						

# COFFEE

## COFFEE PRICES CURRENT

RIO DE JANEIRO, 14th April, 1934

COFFEE SERVICE	9	10	11	12	13	14
Rio spot Coffee N. 7 . . . . .	14\$300	14\$800	15\$000	15\$700	15\$700	16\$000
Rio futures						
April . . . . .	14\$650	14\$975	15\$150	15\$450	15\$275	16\$000
May . . . . .	15\$000	15\$175	15\$400	15\$800	15\$700	16\$225
June . . . . .	15\$325	15\$400	15\$675	16\$225	15\$800	16\$475
July . . . . .	15\$250	15\$250	15\$550	16\$150	15\$675	16\$250
August . . . . .	15\$225	15\$200	15\$600	16\$175	15\$500	16\$150
September . . . . .	15\$150	15\$200	15\$600	16\$025	15\$625	16\$000
Sales . . . . .	24.500	34.000	24.500	19.500	25.000	15.000
Santos spot N. 4 . . . . .	17\$500	17\$500	17\$500	17\$600	17\$600	17\$600
Santos futures						
April . . . . .	19\$300	19\$500	19\$500	19\$600	19\$675	19\$675
May . . . . .	19\$300	19\$400	19\$425	19\$750	19\$700	19\$700
June . . . . .	19\$500	19\$500	19\$500	19\$650	19\$750	19\$750
July . . . . .	19\$275	19\$450	19\$500	19\$600	19\$775	19\$775
August . . . . .	19\$300	19\$375	19\$475	19\$625	19\$750	19\$750
September . . . . .	19\$200	19\$400	19\$450	19\$650	19\$825	19\$825
Sales . . . . .	4.500	3.500	nil	NIL	NIL	NIL
New York Rio spot N. 6 . . . . .	10 1/2	10 1/2	10 1/2	10 1/2	10 1/2	10 1/2
" Rio " " 7 . . . . .	10 1/4	10 1/4	10 1/4	10 1/4	10 1/4	10 1/4
" Santos " " 4 . . . . .	11 1/4	11 1/4	11 1/4	11 1/4	11 1/4	11 1/4
" Santos " " 7 . . . . .	10 7/8	10 7/8	10 7/8	10 7/8	10 7/8	10 7/8
futures						
May . . . . .	8.29	8.23	8.30	8.44	8.41	8.37
July . . . . .	8.42	8.36	8.44	8.59	8.58	8.54
September . . . . .	8.51	8.44	8.51	8.67	8.65	8.63
December . . . . .	8.58	8.52	8.58	8.74	8.72	8.70
Sales . . . . .	5.000	5.000	5.000	5.000	5.000	5.000
Havre futures						
May . . . . .	166 1/2	168 1/4	167 3/4	167 3/4	170 1/2	170
July . . . . .	166	167 3/4	167 1/4	167 1/4	170	170
September . . . . .	165 3/4	167 1/2	167	167 1/4	170	170
December . . . . .	165 3/4	167	167	167 1/4	169 1/2	169 1/2
Sales . . . . .	3.000	1.000	2.000	2.000	2.000	1.000
Hamburg futures						
May . . . . .	32 1/2	32 1/2	32 1/2	32 1/2	32 1/2	32 1/2
July . . . . .	33 1/2	33 1/2	33 1/2	33 1/2	33	33 1/2
September . . . . .	34	34 1/2	34 1/2	34	34	34
December . . . . .	35	35	35	35	34 3/4	35
Sales . . . . .	NIL	NIL	NIL	NIL	NIL	NIL

## SHIPMENT OF COFFEE DURING FEBRUARY 1934

IN BAGS OF 60 KILOS EACH

<i>Europe:</i>	Rio	Santos	Victoria	Paranáguá	Bahia	Recife	Angra dos Reis	Total
France . . . . .	22.670	91.734	1.853	9.831	5.471	2.075	8.145	141.779
Finland . . . . .	18.330	2.315	1.226	—	—	—	—	21.871
Greece . . . . .	13.798	175	—	—	—	—	—	13.973
Italy . . . . .	11.576	31.753	3.806	550	3.839	626	—	52.150
Germany . . . . .	9.425	110.835	1.650	579	175	—	—	122.664
Turkey . . . . .	7.418	—	—	—	—	—	—	7.418
Sweden . . . . .	5.727	53.761	6.048	—	—	—	—	65.536
Spain . . . . .	4.148	3.760	—	—	—	1.224	—	9.132
Rumania . . . . .	2.804	—	—	—	—	—	—	2.804
Holland . . . . .	1.980	89.361	923	460	—	—	500	93.224
Belgium . . . . .	1.957	22.256	102	300	125	297	500	25.537
Portugal . . . . .	1.783	32	30	—	—	—	—	1.845
Yugoslavia . . . . .	1.218	—	—	—	—	—	—	1.218
Dantzic . . . . .	859	650	1.751	—	50	—	—	3.310
Norway . . . . .	715	2.575	525	—	—	—	—	3.815
Denmark . . . . .	675	17.018	—	—	50	—	—	17.743
Island . . . . .	469	—	—	—	—	—	—	469
Polland . . . . .	455	162	1.017	—	—	—	—	1.634
United Kingdom . . . . .	250	7.223	—	—	—	—	—	7.473
Gibraltar . . . . .	195	222	138	—	—	—	—	555
Malta . . . . .	100	—	269	—	—	—	—	369
<b>TOTAL</b> . . . . .	<b>106.552</b>	<b>433.832</b>	<b>19.338</b>	<b>11.720</b>	<b>9.710</b>	<b>4.222</b>	<b>9.145</b>	<b>594.519</b>
<i>North America:</i>								
United States of America . . . . .	83.742	568.423	53.809	8.846	53.555	3.575	—	771.950
Canada . . . . .	2.500	3.155	—	50	—	—	—	5.705
<b>TOTAL</b> . . . . .	<b>86.242</b>	<b>571.578</b>	<b>53.809</b>	<b>8.896</b>	<b>53.555</b>	<b>3.575</b>	—	<b>777.655</b>
<i>South America:</i>								
Argentina . . . . .	14.263	9.049	—	—	—	—	—	23.312
Chile . . . . .	2.410	—	—	—	—	—	—	2.410
Uruguay . . . . .	2.115	—	—	—	—	—	—	2.115
<b>TOTAL</b> . . . . .	<b>18.788</b>	<b>9.049</b>	—	—	—	—	—	<b>27.837</b>
<i>Africa:</i>								
U. South Africa . . . . .	13.419	—	—	—	—	—	—	13.419
Argella . . . . .	8.762	500	238	—	—	—	—	9.500
Egypt . . . . .	1.740	1.375	—	—	—	—	—	3.115
Canarias . . . . .	1.203	—	—	—	—	—	—	1.203
Tunis . . . . .	988	194	—	—	—	—	—	1.182
Mozambique . . . . .	951	—	—	—	—	—	—	951
Morocco . . . . .	910	175	401	—	—	—	—	1.486
Senegal . . . . .	193	—	—	—	—	—	—	193
South Africa . . . . .	175	—	—	—	—	—	—	175
Tripoli . . . . .	150	94	—	—	—	—	—	244
<b>TOTAL</b> . . . . .	<b>28.491</b>	<b>2.338</b>	<b>639</b>	—	—	—	—	<b>31.468</b>
<i>Asia:</i>								
Turkey . . . . .	3.696	—	—	—	—	—	—	3.696
Syria . . . . .	69	63	—	—	—	—	—	132
Japan . . . . .	—	250	—	—	—	—	—	250
<b>TOTAL</b> . . . . .	<b>3.765</b>	<b>313</b>	—	—	—	—	—	<b>4.078</b>
Consumption on board . . . . .	—	42	—	—	—	—	—	42
<b>TOTAL abroad</b> . . . . .	<b>243.838</b>	<b>1.017.152</b>	<b>73.786</b>	<b>20.616</b>	<b>63.265</b>	<b>7.797</b>	<b>9.145</b>	<b>1.435.599</b>
<b>Coastwise</b> . . . . .	<b>5.762</b>	<b>11.700</b>	<b>5.976</b>	<b>875</b>	<b>3.705</b>	<b>5.073</b>	—	<b>33.091</b>
<b>Grand total for February</b> . . . . .	<b>249.600</b>	<b>1.028.852</b>	<b>79.762</b>	<b>21.491</b>	<b>66.970</b>	<b>12.870</b>	<b>9.145</b>	<b>1.468.690</b>



**COFFEE QUOTATIONS**

RIO DE JANEIRO, 14th April 1934

Spot	Rio		— New York —			
	7s	4s	Rio 7s	Santos 4s	's	
April 7-1934 . . .	15\$000	17\$000	10. 1/4c	11. 1/4c	10. 7/8c	
April 14-1934 . . .	16\$000	17\$600	10. 1/4c	11. 1/4c	10. 7/8c	
Rise or fall . . .	+1\$000	+\$600	—	—	—	
Options:— — Rio Contract A — Santos Contract A —						
	May	July	Sept.	May	July	Sept.
Apr. 7-1934	8.21c	8.35c	8.44c	10.45c	10.62c	10.94c
Apr. 14-1934	8.37c	8.54c	8.63c	10.78c	10.91c	11.22c
Rise or fall	+0.16c	+0.19c	+0.19c	+0.33c	+0.29c	+0.28c

**COFFEE MARKET SITUATION**

Week ending April 14th.

Due to low offers by exporters and also to a certain lack of interest on their part, the market did not show any sensible improvement over last week. Sellers nevertheless raised their prices for type 7 up to 16\$000 per 10 kilos.

Entries continued heavily, the present stock of disposable in Rio running up to over 740.000 bags. Here, as in Santos, this stock is proving excessive.

In Santos the situation showed some improvement at the beginning of the week following the reported high level from New York. This fact induced exporters to procure business although their offers were not yet considered acceptable by sellers, as type 4 is being quoted at 17\$600.

General satisfaction caused the notice, not officially confirmed, that the D. N. C. will withdraw about 1.500.000 bags of the Stock now existing in Santos, as well as the intention to shortly reinitiate the destruction by burning of the Coffees belonging to them.

**COFFEE STATISTICS**

**ENTRIES**

Week ending April, 14, 1934 — In bags of 60 kilos

	FOR THE WEEK ENDED		FOR THE CROP
	Apr. 14 1934	Apr. 7 1934	Apr. 14 1934
<b>RIO:</b>			
By Central and Local poldina R'y . . .	52.270	56.085	2.384.087
Warehouses . . .	8.320	6.408	367.496
<b>TOTAL</b> . . . . .	60.590	62.493	2.751.583
Total - Santos . . .	252.105	269.077	9.956.929
<b>TOTAL Rio &amp; Santos</b>	312.695	331.570	12.708.512

The total entries by different S. Paulo Railways for the crop to April, 14, 1934.

	Past Jundiary	Sorocabana	Total at	Total at
	Per	and others	S. Paulo	Santos
1933/1934 . . .	7.387.159	2.739.326	10.126.485	9.956.929

**COFFEE LOADED (EMBARQUES)**

Week ending April, 14, 1934 — In bags of 60 kilos

	DURING WEEK ENDED		FOR THE CROP
	Apr. 14 1934	Apr. 7 1934	Apr. 14 1934
Rio . . . . .	20.453	49.803	2.452.659
Santos . . . . .	185.786	96.574	9.302.500
<b>Total - Rio &amp; Santos</b>	206.239	146.377	11.755.159

**SALES OF COFFEE (DECLARED)**

Week ending April, 14, 1934 — In bags of 60 kilos

	DURING WEEK ENDED		FOR THE CROP
	Apr. 14 1934	Apr. 7 1934	Apr. 14 1934
Rio . . . . .	14.386	13.673	1.147.802
Santos . . . . .	55.000	52.000	4.509.000
<b>TOTAL - Rio &amp; Santos</b>	69.386	65.673	5.656.802

**VALUE OF COFFEE CLEARED FOR FOREIGN PORTS**

Week ending April, 14, 1934 — In bags of 60 kilos

PORTS	Apr. 14 1934	Apr. 7 1934	Apr. 14 1934	Apr. 7 1934	CROP TO APR. 14, 1934	
	Bags	Bags	£	£	Bags	£
Rio . . . . .	35.121	44.858	52.221	70.375	2354.660	3249.796
Santos . . . . .	107.251	237.763	172.799	389.745	8925.053	13998225
<b>Total 1933/1934</b>	142.372	282.621	225.020	460.120	11349723	17248021

**COFFEE SAILED**

Week ending April, 14, 1934 — In bags of 60 kilos

PORTS	United States	Europe & Mediterranean	Coast	River Plate	Cape	Others ports	TOTAL FOR WEEK	CROP TO DATE
	Rio . . . . .	6.225	13.793	794	3.346	11.715	—	35.915
Santos . . . . .	41.461	65.143	8	647	—	—	107.259	9.030.474
<b>TOTAL</b>	47.686	78.936	802	4.033	11.715	—	143.171	11.455.340

## OUR OWN STOCK

In bags of 60 kilos

RIO STOCK on Apr. 7, 1934 .....	713.781	
Entries during week ended April, 14, 1934 .....	60.590	
	774.371	
Loaded (Embarques) for week ended Apr. 14, 1934 .....	20.453	
Local consumption week ended Apr. 14, 1934 .....	3.500	
STOCK AT RIO on Apr. 14, 1934 .....		754.278
SANTOS STOCK on Apr. 7, 1934 .....	2.380.922	
Entries for week ended Apr. 14, 1934 .....	252.105	
	2.633.027	
Loaded (Embarques) during for week ended Apr. 14, 1934 .....	185.786	
STOCK AT SANTOS on Apr. 14, 1934 .....		2.448.755
STOCK AT RIO AND SANTOS on Apr. 14, 1934 .....		3.203.033
STOCK AT RIO AND SANTOS on Apr. 7, 1934 .....		3.094.703

NOTE — From the stock of Rio have been deducted 271 bags by the D. N. C.  
 In ditto stock were included 1.119 bags, premium of 10% to shippers  
 In ditto stock were included 12 bags coffee returned.  
 In the stock of Santos included 1.514 bags, by the D. N. C.



## COFFEE

Bahia Stock on 7th April 1934 .....	16.039
Receipts during week ended April 14th ..	5.739
Available .....	21.778
Clearances during the weeks:	
to U. S. ....	
to Europe .....	2.120
to Elsewhere .....	1.020
	3.140
Bahia Stock 14th April 1934 .....	18.638

## THE COMMERCIAL TELEGRAM BUREAUX

Supply Official Reports and Quotations of all the leading American, European, Brazilian and Indian Markets to the Cotton, Coffee, Grain, Produce, Provision, Petroleum and Sugar Trades of Europe and America: also re-transmit Private Despatches by Cable to multiple addresses in Europe and North and South America.

.....  
 Subscribers furnished with Intermediate or Closing American Reports at night by special arrangements with London, Liverpool, or Amsterdam offices.

FOR TERMS &c., APPLY TO CHIEF OFFICE:

**COMTELBURO, Limited, 11, Tokenhouse Yard, London E. C. 2** (open day and night)

Registered Telegraphic Address: "COMTELBURO"

Telephs London Metropolitan 8244 (4 lines)

LONDON: 30 Mincing Lane, E. C. 3. Telephones  
 LIVERPOOL: 7, Rumford Str. 1983 Centr. (two)  
 NEW YORK: 66/70 Beaver Street, Hanover 2-4450  
 AMSTERDAM: Spuistraat 4-3268Z.  
 HAVRE: Rua Victor Hugo, 136  
 ANTWERP: Rue des Douze Mois, 19, 11852  
 PARA: Avenida Castilhos França, 71, Caixa Postal 2  
 CEARA: Rua Major Facundo 680; Caixa Postal 198.  
 PERNAMBUCO: Rua Visc. Itaparica, 207, Caixa 299

BAHIA: Rua Portugal, 16, Caixa 203  
 VICTORIA: Rua 1.º de Março, 46; Sala 8, C. Postal 40.  
 RIO DE JANEIRO: Av. R. Branco, 33-1.º, C. 266  
 SANTOS: Rua Cidade de Toledo, 7, Caixa 243  
 S. PAULO: R. 3 de Dezembro, 48, 1.º. Caixa 1281.  
 CURITYBA: Av. João Pessoa, 71; 2.º and., C. Postal 79  
 RIO GRANDE: Rua Riachuelo 199; Caixa Postal 92  
 PORTO ALEGRE: R. Siqueira Campos, 903; C. P. 500  
 B. AIRES: Bolsa de Comercio, 239, tel. U. T. 3-2340.



# ITALMAR

ITALIA - FLOTTE RIUNITE • COSULICH S. T. N.

Express service With The Most Luxurious Ships on the European Route

	Santos	RIO	Bahia	Pernambuco	Dakar	Las Palmas	Gibraltar	Algier	Barcelona	Naples	Villefranche	Genoa	Trieste
<b>Neptunia</b> . . . . .	May 2	May 3	May 5	May 6	—	—	May 13	May 1	—	May 16	—	—	May 18
<b>C. Biancamano</b> . . . . .	May 11	May 12	—	—	May 18	—	—	—	May 23	—	—	—	—
<b>Oceania</b> . . . . .	May 22	May 23	May 25	May 26	—	—	June 1	June 3	—	June 5	—	May 24	May 24
<b>Conte Grande</b> . . . . .	June 1	June 2	—	—	June 8	—	—	—	June 13	—	—	June 11	June 14

TO: SYRIA - EGYPT - INDIA - CHINA & JAPAN  
with the Lloyd Triestino's famous "Contes" - **Conte Verde, Conte Rosso & Victoria**

Regular service Third Class Only

	Santos	RIO	Teneriffe and or Las Palmas	Naples	Genoa	Naples	Trieste
<b>P. Giovanna</b> . . . . .	May 6	May 7	May 19	May 25	May 26	—	—
<b>Belvedere</b> . . . . .	June 6	June 7	June 18	—	June 25	June 27	June 30
<b>P. Maria</b> . . . . .	June 24	June 25	July 7	July 13	July 14	—	—
<b>P. Giovanna</b> . . . . .	July 25	July 26	Aug. 7	Aug. 13	Aug. 14	—	—

CARGO SERVICE

	Santos	RIO	Victoria	Bahia
<b>Laura C</b> . . . . .	April 28	April 30	May 2	May 5

General Agents for Brazil

## ITALMAR

S. A. BRASILEIRA DE EMPRESAS MARITIMAS  
Avenida Rio Branco, 4 - Rio de Janeiro  
Phone: 3-5840 — Telegrams: ITALMARE-Rio

MANIFESTS OF COFFEE  
RIO DE JANEIRO

MARCH, 30.

"Cuyabá"  
LISBON

Pinto & Cia.	25
Mc. Kinlay & Cia.	100
Mc. Kinlay & Cia.	625
A. Jabour & Cia.	812
Arbuckle & Cia.	150
Cia. Nac. Comm. de Café	138
Pinheiro, Ladeira & Cia.	75
Ornstein & Cia.	87
Pinto, Lopes & Cia.	191
Arbucyle & Cia.	13
<b>Total</b>	<b>2.216</b>

MARCH, 30.

"Jaboatão"  
NEW ORLEANS

Marcellino Martins F.º & C.	500
Paiva, Nunes & Cia.	250
Theodor Wille & Cia. Ltd.	1.000
Cia. Commis. de Café Minas Geraes	700
<b>Total</b>	<b>2.450</b>

APRIL, 2.

"Africa Marú"  
CAPE TOWN

Mc. Kinlay & Cia.	751
-------------------	-----

Hard, Rand & Cia.	663
Castro, Silva & Cia.	510
E. G. Fontes & Cia.	500
Cia. Nac. Comm. de Café	375
Sinner & Cia.	355
Theodor Wille & Cia. Ltd.	213
Norton Megaw & Cia. Ltd.	200
<b>MOSSEL BAY</b>	
Hard, Rand & Cia.	375
Castro, Silva & Cia.	300
Sinner & Cia.	200
Mc. Kinlay & Cia.	183
Norton Megaw & Cia. Ltd.	125
Theodor Wille & Cia. Ltd.	25
<b>ALGOA BAY</b>	
Theodor Wille & Cia. Ltd.	475
Hard, Rand & Cia.	465
Norton, Megaw & Cia. Ltd.	425
Mc. Kinlay & Cia.	411
Cia. Nac. Comm. de Café	100
Sinner & Cia.	75
Castro, Silva & Cia.	25

EAST LONDON

Mc. Kinlay & Cia.	675
Theodor Wille & Cia. Ltd.	250
E. G. Fontes & Cia.	178
Hard, Rand & Cia.	109
Norton Megaw & Cia. Ltd.	50
Cia. Nac. Comm. de Café	50
Castro, Silva & Cia.	35
S. Pereira & Cia.	6

DURBAN

Hard, Rand & Cia.	873
E. G. Fontes & Cia.	760
Castro, Silva & Cia.	425
Ornstein & Cia.	175
Cia. Nac. Comm. de Café	50

Mc. Kinlay & Cia.	24
<b>LOURENÇO MARQUES</b>	
Hard, Rand & Cia.	273
Castro, Silva & Cia.	253
Sinner & Cia.	75
E. G. Fontes & Cia.	50
Norton Megaw & Cia. Ltd.	50
Ornstein & Cia.	25
Mc. Kinlay & Cia.	15
<b>LUDEWITZ BAY</b>	
Mc. Kinlay & Cia.	25
<b>WALFISH BAY</b>	
Mc. Kinlay & Cia.	25
Theodor Wille & Cia. Ltd.	12
<b>Total</b>	<b>11.215</b>

APRIL, 5.

"Western Prince"  
LONDON (Canada)

Hard, Rand & Cia.	500
-------------------	-----

APRIL, 6.

"Mendoza"  
CASABLANCA

Cia. Nac. Comm. de Café	193
Pinto, Lopes & Cia.	138
A. Jabour & Cia.	137
Pinto & Cia.	30
E. G. Fontes & Cia.	25
Mc. Kinlay & Cia.	13
José Guerino	12

GIBRALTAR

Pinto & Cia.	250
Cia. Nac. Comm. de Café	200
Hard, Rand & Cia.	5

ORAN

Marcellino Martins Filho & C.	938
A. Jabour & Cia.	509

Ornstein & Cia. ....	288
Theodor Wille & Cia. Ltd.	7
<b>ALGER</b>	
A. Jabour & Cia. ....	1.237
E. G. Fontes & Cia. ....	458
Theodor Wille & Cia. Ltd.	349
Ornstein & Cia. ....	125
Paiva, Nunes & Cia. ....	125
Pinto & Cia. ....	25
José Guarino ....	13
Sinner & Cia. ....	12
Souza Pimentel & Cia. ....	8
Mc. Kinlay & Cia. ....	6
<b>AVILÉS</b>	
Ornstein & Cia. ....	25
<b>SEVILHA</b>	
Ornstein & Cia. ....	100
<b>TUNIS</b>	
Pinto, Lopes & Cia. ....	50
<b>PHELIPPEVILLE</b>	
E. G. Fontes & Cia. ....	125
<b>BONE</b>	
Pinto, Lopes & Cia. ....	126
<b>MARSEILLES</b>	
Theodor Wille & Cia. Ltd.	400
E. G. Fontes & Cia. ....	74
Ornstein & Cia. ....	13
José Guarino ....	13
<b>MELILLA</b>	
Pinto, Lopes & Cia. ....	275
<b>STAMBOUL</b>	
Ornstein & Cia. ....	938
<b>SMYRNE</b>	
Vivacqua Irmãos S/A ....	376
<b>PIRAEUS</b>	
Sinner & Cia. ....	2.914
Theodor Wille & Cia. Ltd.	250
<b>GALATZ</b>	
Ornstein & Cia. ....	230
<b>CONSTANZA</b>	
S. Pereira & Cia. ....	250
<b>CEUTA</b>	
Pinto, Lopes & Cia. ....	250
<b>LARACHE</b>	
Hard, Rand & Cia. ....	13
<b>TANGER</b>	
Theodor Wille & Cia. Ltd.	125
<b>ALEXANDRETTA</b>	
Sinner & Cia. ....	63
<b>Total</b> .....	<b>11.579</b>
<b>APRIL 8.</b>	
<b>"Ayuruoca"</b>	
<b>NEW YORK</b>	
Theodor Wille & Cia. Ltd.	2.400
E. G. Fontes & Cia. ....	500
Vivacqua Irmãos S/A ....	250
Marcellino Martins Filho & C.	125
<b>Total</b> .....	<b>3.275</b>
<b>APRIL 8.</b>	
<b>"Asturias"</b>	
<b>CAP TOWN</b>	
Sinner & Cia. ....	125
<b>MOSSEL BAY</b>	
Castro, Silva & Cia. ....	25
<b>ALGOA BAY</b>	
Castro, Silva & Cia. ....	50
<b>EAST LONDON</b>	
Mc. Kinlay & Cia. ....	250
Castro, Silva & Cia. ....	50
<b>Total</b> .....	<b>500</b>
<b>APRIL 9.</b>	
<b>"Macedonier"</b>	
<b>MONTEVIDEO</b>	
Vivacqua Irmãos S/A ....	365
Marcellino Martins Filho & C.	250
<b>BUENOS AIRES</b>	
A. Jabour & Cia. ....	926
Pinheiro, Ladeira & Cia. ....	895
Marcellino Martins F. & C.	500

Theodor Wille & Cia. Ltd.	450
<b>Total</b> .....	<b>3.386</b>
<b>Total Overseas</b> .....	
	<b>35.121</b>
<b>MANIFESTS OF COFFEE</b>	
<b>SANTOS</b>	
<b>MARCH, 30.</b>	
<b>"Jamaïque"</b>	
<b>HAVRE</b>	
Theodor Wille & Cia. Ltd.	14.744
Cia. Leme Ferreira ....	4.250
Hard, Rand & Cia. ....	3.558
Soc. Nacional Export. Ltd.	2.250
Nioac & Cia. Ltd. ....	1.500
Naumann, Gepp & Cia. Ltd.	1.000
Almeida Prado & Cia. ....	925
Sampaio Bueno & Cia. ....	500
Nossack & Cia. ....	438
Cia. Paulista de Exportação	276
Fed. Paulista Coop. Café .	125
Silva, Ferreira & Cia. ....	113
<b>DUNKERQUE</b>	
Cia. Leme Ferreira ....	550
Hard. Rand & Cia. ....	500

Martins, Gregory & Cia. Ltd.	76
Cia. Paulista de Exportação	58
E. Johnston & Cia. Ltd. . .	51
Nioac & Cia. Ltd. ....	43
Rebello, Alves & Cia. ....	28
Junqueira, Meirelles & Cia. .	13
<b>VENEZA</b>	
Junqueira, Meirelles & Cia..	251
Exp. Rubiac. Ltd. ....	131
Sampaio Bueno & Cia. ....	63
Rebello, Alves & Cia. ....	13
Nioac & Cia. Ltd. ....	13
Naumann, Gepp & Cia. Ltd.	6
<b>ALEXANDRIA</b>	
Theodor Wille & Cia. Ltd.	323
Hard, Rand & Cia. ....	13
<b>NAPLES</b>	
Naumann, Gepp & Cia. Ltd.	52
Hard, Rand & Cia. ....	13
<b>ANCONA</b>	
Junqueira, Meirelles & Cia.	13
Rebello, Alves & Cia. ....	6
<b>PIRAEUS</b>	
Vidal & Cia. ....	18
<b>Total</b> .....	<b>2.882</b>
<b>MARCH 31.</b>	
<b>"Brittany"</b>	
<b>BUENOS AIRES</b>	
A. Sion & Cia. ....	188
Raphael Sampaio & Cia. ....	150
Nossack & Cia. ....	100
Eugenio Teuber ....	65
<b>Total</b> .....	<b>503</b>
<b>MARCH 31.</b>	
<b>"West Nilus"</b>	
<b>S. FRANCISCO DA CALIFORNIA</b>	
Hard, Rand & Cia. ....	5.250
Almeida Prado & Cia. ....	425
Leon Israel Co. S/A ....	128
<b>SAN PEDRO</b>	
Theodor Wille & Cia. Ltd.	3.575
Lima, Nogueira & Cia. ....	875
Exp. Café Brasil Ltd. ....	375
Hard, Rand & Cia. ....	175
Leon Israel C.º S/A ....	125
Almeida Prado & Cia. ....	125
<b>TACOMA</b>	
Theodor Wille & Cia. Ltd.	750
<b>VANCOUVER</b>	
Theodor Wille & Cia. Ltd.	446
<b>PORTLAND</b>	
Almeida Prado & Cia. ....	250
<b>SEATTLE</b>	
Theodor Wille & Cia. Ltd.	125
<b>Total</b> .....	<b>12.624</b>
<b>APRIL, 2.</b>	
<b>"Cabo San Tmé"</b>	
<b>BARCELONA</b>	
Departamento Nac. do Café	1.725
Cia. Leme Ferreira ....	375
Manoel Vallejo ....	125
<b>CADIZ</b>	
Departamento Nac. do Café	75
Cia. Leme Ferreira ....	26
Martins, Gregory & Cia. Ltd.	10
<b>SEVILHA</b>	
Cia. Leme Ferreira ....	81
<b>MALAGA</b>	
Cia. Leme Ferreira ....	10
<b>VALENCIA</b>	
Cia. Leme Ferreira ....	3
<b>CONSUMPTION</b>	
Rosendo Fernandez ....	3
<b>Total</b> .....	<b>2.438</b>

## Oswaldo Aragão da Silveira

Official Exchange & Share Broker

---

**G. FRASER**

**E. SAUTTER**

**W. DIXON**

Rua da Candelaria, 28-2.º andar

Telephones: 3-1033-1034

4-2337-2338-3333

P. O. Box 210

Telegraphic Address "FRASER"

Rio de Janeiro

Fed. Paulista Coop. Café .	125
<b>ROUEN</b>	
Pinto & Cia. ....	13
<b>Total</b> .....	<b>30.867</b>
<b>MARCH, 30.</b>	
<b>"Conte Biancamano"</b>	
<b>GENOA</b>	
Almeida Prado & Cia. ....	1.637
Junqueira, Meirelles & Cia.	1.000
Hard, Rand & Cia. ....	1.000
Peirone, Penteado & Cia. ....	882
Exp. Rubiac. Ltd. ....	750
Nossack & Cia. ....	315
Cia. Leme Ferreira ....	313
Mario Lionello ....	125
B. Gonçalves & Cia. Ltd. . .	125
Theodor Wille & Cia. Ltd.	125
Naumann, Gepp & Cia. Ltd.	63
<b>LIVORNO</b>	
Peirone, Penteado & Cia. . .	125
<b>TRIPOLI</b>	
Exp. Rubiac. Ltd. ....	63
<b>CONSUMPTION</b>	
Peirone, Penteado & Cia. . .	3
<b>Total</b> .....	<b>6.526</b>
<b>MARCH, 31.</b>	
<b>"Teresa"</b>	
<b>TRIESTE</b>	
Naumann Gepp & Cia. Ltd.	920
Exp. Rubiac. Ltd. ....	351
Cia. Prado Chaves ....	188
Cia. Leme Ferreira ....	125
Theodor Wille & Cia. Ltd.	114

APRIL, 2.

"Ayuruoca"

NEW YORK

Naumann, Gepp & Cia. Ltd.	5.500
Arbuckle & Cia.	1.718
Theodor Wille & Cia. Ltd.	1.186
A. Sion & Cia.	675
Zander & Cia. Ltd.	375
E. Johnston & Cia. Ltd.	375
Leon Israel C.º S/A	300
Oswaldo Ferreira & Cia.	259
Soc. Mogyana Export. Ltd.	213
Sampaio Bueno & Cia.	50

Total ... 10.642

APRIL, 3.

"Highland Monarch"

BUENOS AIRES

S. A. Levy	44
------------	----

APRIL, 3.

"Sierra Salvada"

BREMEN

Cia. Prado Chaves	3.875
Theodor Wille & Cia. Ltd.	3.276
E. Johnston & Cia. Ltd.	1.731
Sampaio Bueno & Cia.	435
Exp. Rubiac. Ltd.	250
A. Sion & Cia.	25

HAMBURG

E. Johnston & Cia. Ltd.	1.250
Sampaio Bueno & Cia.	1.120
Ramos, Silva & Cia.	1.000
Hard, Rand & Cia.	1.000
Nossack & Cia.	756
Raphael Sampaio & Cia.	677
Exp. Café Brasil. Ltd.	638
Cia. Prado Chaves	500
Naumann, Gepp & Cia. Ltd.	500
Theodor Wille & Cia. Ltd.	250
Lima, Nogueira & Cia.	250
Leon Israel C.º S/A	215
Hermann Gaih & Cia.	125

CONSUMPTION

Bunck & Cia. Ltd.	3
-------------------	---

Total ... 17.877

APRIL, 4.

"Western Prince"

NEW YORK

Naumann, Gepp & Cia. Ltd.	3.000
American Coffee Corp.	2.200
Hard, Rand & Cia.	1.750
Pinto & Cia.	1.520
Cia. Prado Chaves	750
Mc. Laughlin & Cia.	510
Martins, Gregory & Cia. Ltd.	500
Oswaldo Ferreira & Cia.	253
Cia. Paulista de Exportação	250
E. Johnston & Cia. Ltd.	250
Sampaio Bueno & Cia.	250
Lima, Nogueira & Cia.	125
Rebello, Alves & Cia.	125

CONSUMPTION

Thornton & Cia. Ltd.	3
----------------------	---

Total ... 11.486

APRIL, 5.

"Troubadour"

NEW YORK

E. Johnston & Cia. Ltd.	2.125
Sampaio Bueno & Cia.	1.000
Cia. Leme Ferreira	1.000
Franco, Soares & Cia.	875
Junqueira, Meirelles & Cia.	500
Exp. Café Brasil. Ltd.	458
Theodor Wille & Cia. Ltd.	250
Leon Hazan & Cia.	250
Hard, Rand & Cia.	250

CONSUMPTION

Knut Aarseth	1
--------------	---

Total ... 6.709

APRIL, 5.

"Mendoza"

MARSEILLE

Theodor Wille & Cia. Ltd.	2.030
E. Johnston & Cia. Ltd.	721
Hard, Rand & Cia.	488
Exp. Rubiac. Ltd.	183
Cia. Leme Ferreira	33
Lima, Nogueira & Cia.	25
Sampaio Bueno & Cia.	25

ALEXANDRIA

Theodor Wille & Cia. Ltd.	250
---------------------------	-----

TUNIS

Exp. Rubiac. Ltd.	76
-------------------	----

GIBRALTAR

Hard Rand & Cia.	60
A. Sion & Cia.	6
Leon Israel C.º S/A	5

BARCELONA

Cia. Leme Ferreira	59
--------------------	----

ALGIERS

Theodor Wille & Cia. Ltd.	50
---------------------------	----

SOUSSE

Theodor Wille & Cia. Ltd.	6
---------------------------	---

DAKAR

Theodor Wille & Cia. Ltd.	6
---------------------------	---

CEUTA

Leon Israel C.º S. A.	5
-----------------------	---

CONSUMPTION

Domingos F. Martins	2
Emilio Agrofoglio	1

Total ... 4.031

APRIL, 7.

"Asturias"

LONDON

Departamento Nac. do Café	258
Oswaldo Ferreira & Cia.	1

SOUTHAMPTON

Theodor Wille & Cia. Ltd.	250
---------------------------	-----

VIGO

Cia. Leme Ferreira	13
--------------------	----

Total ... 522

APRIL, 7.

"Eastern Prince"

BUENOS AIRES

Cia. Prado Chaves	100
-------------------	-----

Total Overseas ... 107.251

COASTWISE

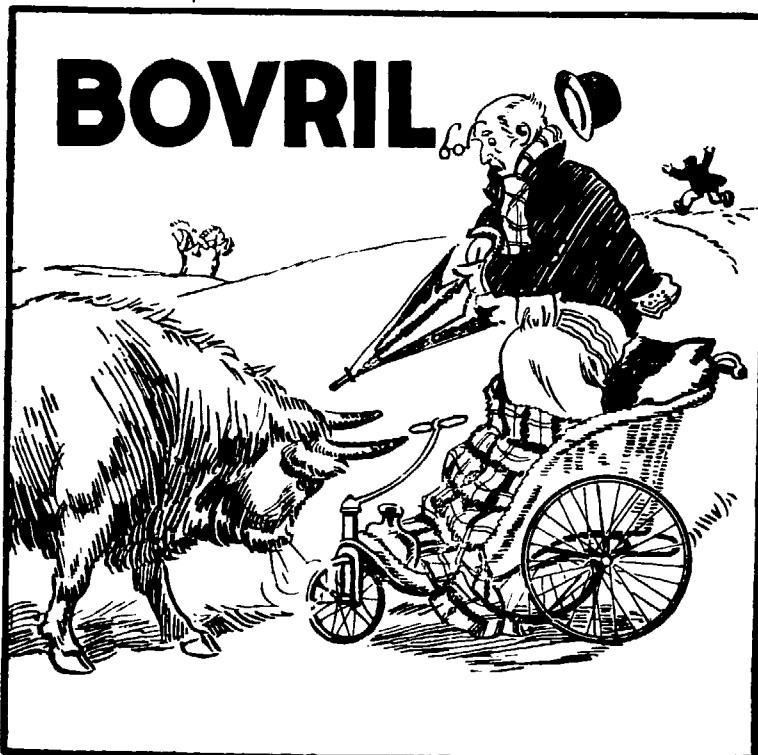
APRIL, 1.

"Itapé"

BAHIA

L. Figueiredo & Cia.	8
----------------------	---

Total Coastwise ... 8



Firms desirous of Establishing business relations, or announcing vacancies on their Staff, or other individuals desirous of obtaining Situations, in this or any other Country, are invited to advertise in our Columns.

The widely distributed area covered by the Review and its high Standing are worthy of note.

**CLEARANCES FROM THE PORT OF VICTORIA FROM 16TH MARCH TO 31ST MARCH, 1934**

<b>MARCH, 16th.</b>	
<b>"Siqueira Campos"</b>	
<b>HAVRE</b>	
Oliveira Brothers	152
<b>ANTWERP</b>	
Ornstein & C."	13
Hard, Rand & C."	240
<b>HAMBURG</b>	
Ornstein & C."	1,525
Reis & C."	250
Oliveira Santos & Filhos Ltd.	125
Cia. Nac. Comm. de Café	125
Vivacqua Irmãos S. A.	25
A. Prado & C."	10
<b>MALTA</b>	
Ornstein & C."	25
	<hr/>
	2,490
<b>MARCH, 17th.</b>	
<b>"Orient"</b>	
<b>HELSINGFORS</b>	
Sydney Pereira & C."	25
Theodor Wille & C."	40
<b>ABO</b>	
Theodor Wille & C."	15
<b>GDYNIA</b>	
Sydney Pereira & C."	25
Hard, Rand & C."	63
Theodor Wille & C."	75
Ornstein & C."	25
Oliveira Santos & C."	13
<b>DANTZIG</b>	
Sydney Pereira & C."	125
Hard, Rand & C."	75
<b>NEUFABRWASSER</b>	
Sydney Pereira & C."	25
Hard, Rand & C."	50
	<hr/>
	556
<b>MARCH 19th.</b>	
<b>"Kr. Margareta"</b>	
<b>GOTHENBURG</b>	
Oliveira Santos & C."	352
Hard, Rand & C."	45
Theodor Wille & C."	26
Sydney Pereira & C."	13
<b>HELSINGBORG</b>	
Oliveira Santos & C."	125
Armando Pinto & C."	125
Theodor Wille & C."	26
<b>KALMAR</b>	
Oliveira Santos & C."	26
Armando Pinto & C."	13
<b>STOCKHOLM</b>	
Oliveira Santos & C."	114
Hard, Rand & C."	205
Vivacqua Irmãos S. A.	275
Vianna Leal & C."	25
Theodor Wille & C."	84
Sydney Pereira & C."	15
Ornstein & C."	13
<b>ORNSKOLDSVIK</b>	
Oliveira Santos & C."	13
Armando Pinto & C."	125
Vianna Leal & C."	125
<b>SUNDSVALL</b>	
Oliveira Santos & C."	38
Vianna Leal & C."	13
<b>GEFLE</b>	
Oliveira Santos & C."	326
Armando Pinto & C."	26
Sydney Pereira & C."	13
<b>HELSINKI</b>	
Vianna Leal & C."	25
<b>NEUFABRWASSER</b>	
Hard, Rand & C."	17
<b>DANTZIG</b>	
Hard, Rand & C."	6
<b>GDYNIA</b>	
Hard, Rand & C."	264

Theodor Wille & C."	12
	<hr/>
	2,648
<b>MARCH, 20th.</b>	
<b>NEW YORK</b>	
A. Prado & C."	750
Armando Pinto & C."	500
Ornstein & C."	250
<b>BALTIMORE</b>	
Theodor Wille & C."	2,000
Vianna Leal & C."	500
<b>NORFOLK</b>	
Hard, Rand & C."	500
	<hr/>
	4,500
<b>MARCH, 20th.</b>	
<b>"Alegrete"</b>	
<b>NEW ORLEANS</b>	
Armando Pinto & C."	1,000
Oliveira Santos & C."	2,250
A. Prado & C."	500
Soc. Exportadora de Café	375
Vicri S. A.	250
<b>HOUSTON</b>	
A. Prando Pinto & C."	1,750
Vivacqua Irmãos S. A.	1,000
Arbuckle & C."	1,000
A. Prado & C."	500
Vianna Leal & C."	875
	<hr/>
	9,500
<b>"Lorraine Cross"</b>	
<b>NEW ORLEANS</b>	
Cia. Nac. Comm. de Café	1,500
Hard, Rand & C."	375
Armando Pinto & C."	500
<b>HOUSTON</b>	
Cia. Nac. Comm. de Café	250
	<hr/>
	2,625
<b>MARCH, 27th.</b>	
<b>"Algic"</b>	
<b>JACKSONVILLE</b>	
Armando Pinto & C."	250
Arbuckle & C."	700
Cia. Nac. Comm. de Café	25
Theodor Wille & C."	125
<b>NORFOLK</b>	
Ornstein & C."	2,000
Armando Pinto & C."	1,500
A. Prado & C."	750
Oliveira Brothers	500
Cia. Nac. Comm. de Café	250
Hard, Rand & C."	250
<b>BALTIMORE</b>	
Ornstein & C."	500
Nolasco & C."	500
	<hr/>
	7,350
<b>MARCH, 27th.</b>	
<b>"Rio de Janeiro Maru"</b>	
<b>NEW ORLEANS</b>	
Hard, Rand & C."	1,125
Oliveira Santos & C."	250
<b>HOUSTON</b>	
Hard, Rand & C."	125
<b>HOUSTON</b>	
<b>Opt N. O.</b>	
Hard, Rand & C."	750
	<hr/>
	2,250
<b>MARCH, 28th.</b>	
<b>"Alphacca"</b>	
<b>ROTTERDAM</b>	
Hard, Rand & C."	568
Theodor Wille & C."	250
<b>OSLO</b>	
Hard, Rand & C."	58
	<hr/>
	871

<b>MARCH, 29th.</b>	
<b>"Lima"</b>	
<b>GOTHENBURG</b>	
Vivacqua Irmãos S. A.	188
Oliveira Santos & C."	125
<b>LULEA</b>	
Hard, Rand & C."	150
<b>GDYNIA</b>	
Hard, Rand & C."	63
	<hr/>
	526
<b>MARCH, 30th.</b>	
<b>"Tenerif"</b>	
<b>HAMBURG</b>	
Theodor Wille & C."	2,250
Vianna Leal & C."	250
Arbuckle & C."	150
	<hr/>
	2,650
<b>CLEARANCES DURING MONTH.</b>	
<b>MARCH, 1934 FROM THE PORT OF VICTORIA</b>	
<b>UNITED STATES</b>	
<b>MARCH, 1st.</b>	
<b>MANDU'</b>	
New York	11,750
Baltimore	4,375
<b>MARCH, 4th.</b>	
<b>POCCONE'</b>	
New Orleans	17,619
Houston	4,375
<b>MARCH, 12th.</b>	
<b>DELSUD</b>	
New Orleans	1,750
Houston	750
<b>MARCH, 20th.</b>	
<b>RUY BARBOSA</b>	
New York	1,500
Baltimore	2,500
Norfolk	500
<b>MARCH, 20th.</b>	
<b>ALEGRETE</b>	
New Orleans	4,375
Houston	5,125
<b>MARCH, 21st.</b>	
<b>LORRAINE CROSS</b>	
New Orleans	2,375
Houston	250
<b>MARCH, 27th.</b>	
<b>ALGIC</b>	
Jacksonville	1,100
Norfolk	5,250
Baltimore	1,000
<b>MARCH, 27th.</b>	
<b>RIO DE JANEIRO MARU'</b>	
New Orleans	1,375
Houston	875
	<hr/>
	66,844
<b>EUROPE</b>	
<b>MARCH, 1st.</b>	
<b>ALWAKI</b>	
Rotterdam	354
Oslo	240
Hamburg	263
<b>MARCH, 1st.</b>	
<b>SANTOS</b>	
Gothenburg	500
Stockholm	1,847
Kalmar	250
Ornskoldsvik	125
Sundsvall	375
Gefle	1,437
Helsingborg	125
Gdynia	102
<b>MARCH, 1st.</b>	
<b>RAUL SOARES</b>	
Hamburg	788
Antwerp	520
Havre	100
Galatz	62

## MARCH, 1st.

ALSINA	
Marseilles .....	385
Gibraltar .....	138
Genoa .....	25

## MARCH, 7th.

ATLANTA	
Trieste .....	2,199
Naples .....	438
Venice .....	38
Stamboul .....	63
Beyrouth .....	19
Susak .....	125

## MARCH, 9th.

HERAKLES	
Gdynia .....	251
Dantzig .....	63
Helsingfors .....	250
Abo .....	150

## MARCH, 16th.

SIQUEIRA CAMPOS	
Antwerp .....	253
Hamburg .....	2,060
Havre .....	152
Malta .....	25

## MARCH, 17th.

ORIENT	
Helsingfors .....	65
Gdynia .....	201
Abo .....	15
Dantzig .....	200
Neufahrwasser .....	75

## MARCH, 19th.

KR. MARGARETA	
Gothenburg .....	436
Helsingborg .....	276
Kalmar .....	39
Stockholm .....	731
Ornskoldsvik .....	263
Sundsvall .....	51
Gefle .....	528
Helsinki .....	25
Neufahrwasser .....	17
Dantzig .....	6
Gdynia .....	276

## MARCH, 28th.

ALPHACCA	
Rotterdam .....	818
Oslo .....	33

## MARCH, 29th.

LIMA	
Gothenburg .....	313
Gdynia .....	63
Lulea .....	150

## MARCH, 30th.

TENERIF	
Hamburg .....	2,650

## MARCH, 31st.

CUYABA'	
Rotterdam .....	256
Hamburg .....	100
	21,329

## NORTH AFRICA

## MARCH, 1st.

ALSINA	
Oran .....	201
Alger .....	506
Mostaganem .....	13
Casablanca .....	25

## MARCH, 31st.

CUYABA'	
Ceuta .....	125
	870
Rio & Coastwise .....	3,945
Grand Total .....	92,988

## TOTAL EXPORT FROM VICTORIA DURING MONTH MARCH 1934

	United		Norte	River	Rio &	
	States	Europe	Africa	Plate	Coast.	Total
Hard, Rand & Co. ....	7,375	3,283	125	—	625	11,408
Oliveira Santos & C. Ltd. ....	7,125	3,695	—	—	525	11,345
Arbuckle & Cia. ....	10,700	315	—	—	—	11,015
Theodor Wille & C. Ltd. ....	4,500	5,035	500	—	200	10,235
Cia. Nac. Comm. Café ....	9,844	125	—	—	—	9,969
Armando Pinto & Cia. ....	7,875	1,007	—	—	—	8,882
Ornstein & Cia. ....	4,500	3,452	44	—	490	8,466
Vivacqua Irmãos S. A. ....	5,375	1,975	—	—	180	7,500
A. Prado & Cia. ....	4,000	575	—	—	855	5,430
Vianna Leal & Cia. ....	1,625	438	63	—	—	2,126
Reis & Cia. Ltd. ....	750	763	125	—	—	1,638
Soc. Exp. de Café ....	1,375	—	—	—	—	1,375
Oliveira Brothers .....	1,050	152	—	—	—	1,202
Dep. Nac. do Café .....	—	—	—	—	1,100	1,100
Sydney Pereira & Cia. ....	—	514	13	—	—	527
Nolasco & Cia. ....	500	—	—	—	—	500
Vicri S. A. ....	250	—	—	—	—	250
	66,844	21,329	870	—	3,945	92,988

## TOTAL EXPORT FROM 1ST JULY 1933 TO 31ST MARCH 1934

	United		Norte	River	Rio &	
	States	Europe	Africa	Plate	Coast.	Total
Vivacqua Irmãos S. A. ....	101,253	18,555	1,501	—	7,572	128,881
Theodor Wille & C. Ltd. ....	28,351	48,309	11,198	—	11,332	99,190
Oliveira Santos & C. Ltd. ....	63,084	31,727	—	—	3,985	98,796
Armando Pinto & Cia. ....	74,275	18,018	1,487	—	1,250	95,030
Hard, Rand & Cia. ....	62,198	17,321	187	—	14,530	94,436
Ornstein & Cia. ....	29,175	47,131	3,254	3,489	10,340	93,439
Sydney Pereira & Cia. ....	44,084	31,747	12,552	—	—	88,383
Cia. Nacional Comm. Café ....	66,728	2,048	—	—	—	68,776
A. Prado & Cia. ....	18,750	14,068	—	—	31,681	64,499
Vianna Leal & Cia. ....	37,210	2,896	395	—	—	40,501
Arbuckle & Cia. ....	37,475	1,255	—	—	—	38,730
Reis & Cia. Ltd. ....	23,013	8,576	353	—	1,477	33,419
Oliveira Brothers .....	22,100	3,420	—	—	—	25,520
Soc. Exp. de Café .....	8,625	75	1,750	—	—	10,450
Vicri S. A. ....	10,250	—	—	—	—	10,250
Cruz Sobrinhos & Cia. ....	1,750	2,777	—	—	1,246	5,773
Nolasco & Cia. ....	500	—	—	—	4,560	5,060
Dep. Nac. do Café .....	11	—	—	—	2,000	2,011
M. Fraga & Cia. ....	1,000	—	—	—	550	1,550
Lube & Irmãos .....	—	—	—	—	1,275	1,275
Thiago Ferreira Assis .....	—	—	—	—	330	330
Sundries .....	—	3	—	—	—	3
	629,832	248,176	32,677	3,489	92,128	1,006,302

Total export from 1st July 1932 to 31st March 1933 .....

1,168,302

Total export from 1st July 1932 to 30th June 1933 .....

1,449,036

**MEAT**

**MEAT CLEARANCES DURING WEEK-ENDING 7th APRIL 1934 PER DESTINATIONS**

MARCH, 31st.		
"Duquesa" LONDON		
	<b>Kilos</b>	
Frig. Wilson	Chilled beef	171,098
"	Frozen offal	28,112
Armour Co.	Chilled beef	224,598
"	Frozen offal	76,236

Total, March, . . . . . 3,962,223  
 APRIL, 2nd.  
 "Andalucia Star" LONDON

	<b>Kilos</b>	
Frig. Anglo	Chilled beef	257,501
"	Preserved	87,272
APRIL, 5th.		
"Mendoza" MARSEILLES		
Frig. Anglo	Frozen beef	52,427
ORAN		
Frig. Anglo	Frozen beef	1,705
GENOA		
Frig. Wilson	Frozen beef	66,742
Armour Co.	Frozen beef	51,652

**MEAT CLEARANCES DURING WEEK-ENDING 14th. APRIL, 1934 PER DESTINATIONS**

APRIL, 7th.		
"Asturias" LONDON		
	<b>Kilos</b>	
Armour Co.	Preserved	2,250
APRIL, 9th.		
"La Rosarina" LIVERPOOL		
Frig. Anglo	Chilled beef	72,932

"	"	Frozen offal	70,650
"Highland Patriot" LONDON			
Armour Co.	Chilled beef	138,146	
"	Chilled pork	2,718	
APRIL, 10th.			
"Afric Star" LONDON			
Frig. Anglo	Chilled beef	72,932	
"	Frozen offal	68,541	
"	Preserved	44,472	
ANTWERP			
Frig. Anglo	Frozen beef	51,281	
APRIL, 12th.			

"Groix" ANTWERP			
Armour Co.	Preserved	3,472	
KRIBI			
Frig. Anglo	Preserved	943	
PORT BONET			
Frig. Anglo	Preserved	1,179	

Total 1,162,965  
**CONFIRMATION OF SANTOS AND S. SEBASTIAO FRUIT CLEARANCES DURING WEEK-ENDING APRIL 14TH 1934:**

<b>BANANAS IN BUNCHES FROM SANTOS</b>		
APRIL, 9th.		
"Highland Patriot"		
London		8,918
APRIL, 10th.		
"Monte Sarmiento"		
Hamburg		2,000
"Afric Star"		
London		12,380
Total Santos		23,298
FROM S. SEBASTIAO		
APRIL, 10th.		
"Afric Star"		
London		26,885

<b>ORANGES IN CASES FROM SANTOS</b>		
APRIL, 7th.		
"Asturias"		
Southampton		2,100
APRIL, 9th.		
"La Rosarina"		
Liverpool		1,570
APRIL, 10th.		
"Afric Star"		
London		3,394
Total Santos		7,064

<b>GRAPE-FRUIT IN CASES FROM SANTOS</b>		
APRIL, 9th.		
"La Rosarina"		
Liverpool		40
APRIL, 10th.		
"Afric Star"		
London		766
Total Santos		806

<b>TANGERINES IN CASES FROM SANTOS</b>		
APRIL, 7th.		
"Asturias"		
Southampton		100
APRIL, 10th.		
"Afric Star"		
London		37
Total Santos		137

**SUGAR AND COTTON QUOTATIONS**

RIO DE JANEIRO. 14th April, 1934

**COTTON SERVICE**

Liverpool 12. 30 P. M.		9	10	11	12	13	14
Pernambuco Maceio fair spot		6.04	6.03	6.06	6.05	6.00	5.96
American Middling spot		6.39	6.38	6.41	6.40	6.35	6.31
American futures	May	6.09	6.08	6.11	6.10	6.05	5.98
	July	6.07	6.07	6.10	6.09	6.04	5.97
	October	6.03	6.03	6.06	6.05	6.00	5.92
	January	6.03	6.02	6.05	6.03	5.99	5.92
New York American Middling Uplands		12.15	12.25	12.15	12.10	12.05	12.10
New York futures	May	11.94	12.04	11.94	12.91	11.84	11.87
	July	12.05	12.16	12.05	12.03	11.95	11.97
	October	12.19	12.29	12.18	12.15	12.08	12.10
	January	12.35	12.47	12.34	12.32	12.24	12.28

**SUGAR SERVICE**

New York futures	May	1.38	1.36	1.41	1.40	1.40	1.41
	July	1.44	1.42	1.47	1.46	1.47	1.48
	September	1.49	1.47	1.52	1.52	1.52	1.53
	December	1.54	1.53	1.58	1.57	1.58	1.59
London futures	May	4/4 1/4	4/4 1/4	4/6 1/4	4/6 3/4	4/6 1/2	11/8 3/4
	August	4/8 1/2	4/8 1/2	4/10	4/10 3/4	4/10 3/4	11/10 1/2
	September	4/9	4/9	4/10 3/4	4/11 1/2	4/10 3/4	4/11 1/2
	October	4/10	5/-	5/-	5/-	5/-	5/-

**RUBBER SERVICE**

Upriver Fine		13 3/4	13 1/2	13 3/4	14	13 3/4	13 3/4
Smoked Sheets		11 5/8	11 5/8	11 7/8	12	11 7/8	11 7/8
Market		Steady	Steady	Steady	Firm	Steady	Steady



# Cotton

The Pernambuco Market closed on April 14th 1934 with first sorts quoted at 45\$000 buyers against 41\$000 buyers on the previous saturday and 67\$000 on April 15th last year.

The movement at Pernambuco for the week ended April 14th 1934, was as follows, in bales of 60 kilos:

Stock on April 7th 1934 .....	33.300
Entries during week ended April 14th 1934 .....	5.200

Available .....	38.500
Deliveries during same week .....	9.100

Stock on 14th April 1934 .....	29.400
--------------------------------	--------

Stock on 15th April 1933 .....	7.200
--------------------------------	-------

For the crop to date entries amounted to 176.800 bales against 81.500 bales during the same period last crop.

The Rio Market, closed on 14th April 1934, with prices quoted as follows, per 10 kilos:

	April 14-34	April 7-34
Scridó 3x4 . . .	11\$000—40\$000	11\$000—40\$000
Sertões 3x5 . . .	38\$000—35\$500	38\$500—36\$000
Matta 3x5 . . .	31\$000—32\$000	35\$000—33\$000
Paulista 3x5 . . .	34\$000—32\$000	36\$000—33\$000

The movement to Rio de Janeiro for the week ended April 7th 1934 was follows;

Stock on April 7th 1934 .....	5.124
Entries during week ended April 14th 1934 .....	718

Available .....	5.842
Deliveries during same week .....	1.771

Stock on April 14th 1934 .....	1.071
Ditto 15th April 1933 .....	25.661

# Sugar

The Pernambuco market closed on 14th April 1934 with all quotations nominal, unaltered as compared with the previous saturday.

The movement at Pernambuco for the week ended 14th April 1934 was as follows, in bags of 60 kilos:

	<i>Bags</i>
Stock on 7th April 1934 .....	1.111.500
Entries during week ended 14th April 1934 .....	7.100

Available .....	1.118.600
Deliveries during same week .....	72.600

Stock on 14th April 1934 .....	1.046.000
Do on April 15th 1933 .....	196.500

For the crop to date entries amounted to 3.363.400 bags as against 3.565.500 bags for the same period last crop.

The Rio Market closed on 14th April 1934 with prices quoted as follows per 60 kilos, crystals 50\$000 to 51\$000, demerara 11\$00 to 15\$000 and mascavo 34\$000 tho 35\$000.

The movement at Rio for the week ended 14th April 1934, was as follows in bags:

	<i>Bags</i>
Stock on 7th April 1934 .....	97.426
Entries during week ended April 14th 1934 .....	68.998

Available .....	166.424
Deliveries during same week .....	11.054

Stock on April 14th 1934 .....	125.370
Ditto, April 15th 1933 .....	170.665

# Rubber

The Movement of Rubber in the port of Pará during the week ended April 14th 1934, was as follows:

Stock on 7th April 1934 .....	2.955.578
Entries for the week ended April 14th 1934 .....	22.848

Available .....	2.978.426
-----------------	-----------

Clearances during week:	
To Europe .....	
To the U. S. ....	152.295
To other ports .....	32.461

Total for the week .....	184.756
--------------------------	---------

Stock on 14th April 1934 .....	2.793.670
--------------------------------	-----------

Spot Rubber was quoted at Pará on 14th April 1934 as follows, per kilo:

Island Fine .....	2\$000
Sernamby Island .....	1\$900
Sertão Fine .....	\$500
Sernamby Sertão .....	\$300
Cauchó Rall .....	\$800

## ESCRITORIO LEVY LIMITADA

CAMBIO STOCK BROKERS TITULOS

Private & Public Titles transacted on all Brazilian markets. Sale of Coffe to the D. N. C., São Paulo & Santos dealers.

Editors of the "Revista Financeira Levi". Boletim Comercial, Suplemento Levi (Dailies)

Money transactions, foreign & national on all markets of the world.

CUSTOM HOUSE BROKERAGE OFFICE

Rua Alvares Penteado, 20 Rua 15 de Novembro, 59  
SAO PAULO SANTOS

Telegrams: "YVEL"

Agents & Representatives in Rio de Janeiro, Bahia, Porto Alegre, Recife, Pará and all foreign Cities.

## SHIPPING

**MOVEMENTS OF VESSELS  
FURNESS PRINCE LINE  
(Houlder Brothers & Co.)  
(Brazil) Ltd. Agents)**

- M/S "Northern Prince" — leaves Rio 3rd May for Trinidad and New York.
- M/S "Southern Prince" — due Rio de Janeiro from New York 4th May, sails for Santos, Montevideo and Buenos Aires.
- M/S "Southern Prince" — leaves Rio 17th May for Trinidad and New York.
- M/S "Eastern Prince" — due Rio de Janeiro from New York 18th May, sails for Santos, Montevideo and Buenos Aires.
- M/S "Eastern Prince" — leaves Rio 31st May for Trinidad and New York.
- M/S "Western Prince" — due Rio de Janeiro from New York 1st June, sails for Santos, Montevideo and Buenos Aires.

**MUNSON STEAMSHIP LINES  
Federal Express Co.—General Agents**
**Passengers steamers:—**

- "American Legion" — Sailed Buenos Aires April 7th, arrived Santos April 10th, sailed April 11th, arr. & sailed Rio April 12th. Due Trinidad April 20th, Bermuda April 24th, New York April 26th.
- "Western World" — Sails Buenos Aires April 21st, Santos April 25th, Rio April 26th, Trinidad May

4th, Bermudas May 8th, New York May 10th.

"Pan American" — Sailed New York April 15th. Due Bermuda April 17th, arrive & Sails Rio April 27th, Santos April 28th, Montevideo May 1st, and Buenos Aires May 2nd.

**JOHNSON LINE  
SHIPS MOVEMENTS  
OUTWARDS**

- M/S "Pedro Christophersen" — left Gothenburg on the 11th March, Pernambuco on the 4th April, Rio on the 9th, Santos on the 12th April, for Buenos Aires.
- M/S "Suecia" — left Gothenburg on the 27th March, for Bahia, Rio, Santos, Montevideo & Buenos Aires. Due to arrive here on the 21st April.
- M/S "Pacific" — left Gothenburg on the 14th April, for Rio, Santos & Buenos Aires. Due to arrive here on the 11th May.
- M/S "Santos" — due to leave Gothenburg on the 23rd April, for Rio, Santos, Montevideo & Buenos Aires. Due to arrive here on 15th May.

**HOMEWARDS:**

- M/S "Kr. Margareta" — left Buenos Aires on the 3rd Mar., Montevideo on the 7th, Santos on the 15th, Rio on the 16th, Victoria on the 18th, Bahia on the 21st March, and arrived at Gothenburg on the 12th April.
- M/S "Lima" — left Buenos Aires on the 18th March, Santos on the 26th, Rio on the 28th, Victoria

on the 29th March, and due to arrive at Gothenburg on the 20th April.

M/S "San Francisco" — left Buenos Aires on the 28th March, Montevideo on the 3rd April, Santos on the 10th, Rio on the 12th, due Victoria on the 14th April, for Sweden and Finland.

**ITALMAR — Rio de Janeiro — Movement of Ships**

- "Augustus" — Will sail from B. A. 17th April. From Rio 21st Apr. to Europe.
- "Conte Grande" — Will leave Genoa to South-America May 10th.
- "Conte Biancamano" — Will sail from Genoa 18th April. Due Rio 30th April.
- "Neptunia" — Due Rio from Europe 19th April.
- "Oceania" — Will leave Trieste 26th April. Due Rio 10th May.
- "Pssa. Maria" — Left Rio 12th Apr. to Italy.
- Pssa. Giovanna — Sailed from Rio to Santos 12th April at 3 p. m.
- "Belvedere" — Will sail from Trieste 8th May bound to South-America.
- "Teresa" — Left Bahia 8th April to Italy.
- "Anna C." — Sailed from Genoa to Montevideo and B. A. 15th Apr.
- "Atlanta" — Will sail from Trieste 15th April.
- "Laura C." — Will sail from Buenos Aires 21st April. Due Santos 28th April, Rio 30th April, Victoria 2nd May, Bahia 5th May

**SUBSCRIPTION FORM**
**WILEMAN'S BRAZILIAN REVIEW**


CAIXA DO CORREIO (P. O. Box) 809

RIO DE JANEIRO

Please enter <sup>my</sup>our subscription to **Wileman's Brazilian Review** for one year beginning \_\_\_\_\_

for which  $\frac{1}{12}$  enclose \_\_\_\_\_

Name \_\_\_\_\_

Address \_\_\_\_\_

**TERMS OF SUBSCRIPTION (Post Free)**

In Brazil . . . . .	Rs. 100\$000	Payable in advance
Elsewhere . . . . .	£5-0-0	" " "
Single copies (to subscribers only) . . . . .	Rs. 2\$000	

**Serviço Internacional de Viagens**  
**G. Bernstorff**

Official Agents of all Steamship & Air Lines

General Passenger Agents for Brazil of the:

**"DELTA LINE"**

(MISSISSIPPI SHIPPING CO., Inc.)  
NEW ORLEANS, U. S. A.

Rio de Janeiro

Head office:

Rua General Camara, 32-Loja

Cables: Berngrafen. Rio

Telephones: } 3-1454  
                  } 3-1455  
                  } 3-1137



São Paulo

Branchoffice:

Rua Libero Badaró, 52 - Loja

Cables: Berngrafen, São Paulo

Telephone: 2-7417

FIRE MARINE

**CALEDONIAN**

INSURANCE COMPANY

FOUNDED 1805

Capital declared and realised for  
Brazil: Rs. 1.500.000.000

Agents at Rio de Janeiro:

**BARBOZA ALBUQUERQUE & CIA.**

Rua do Rosario N.º 101

Tel. 3-5182 — P. O. Box 622

Agents at São Paulo:

**GILBERTO LOPES**

Rua Boa Vista N.º 3-2.º

ROAD AND RAILWAY TRANSIT

BURGLARY

MOTOR CAR PLATE GLASS

Bunkering Contractors for Foreign Depots and United Kingdom Coal Shipping Ports.  
Brokers for Sale and Purchase.

Chartering

Coal Exporters.

Steamship Agents

Oil Fuel.

Insurance

**Lambert Brothers, Limited**

85, GRACECHURCH STREET, LONDON, E. C. 3.

Telegrams: LAMBERT. STOCK. LONDON

ALSO AT

Cardiff, The Exchange .....  
Newport, Mon., 69 Dock Street .....  
Port Talbot, Exchange Buildings .....  
Newcastle-on-Tyne, Exchange Buildings .....  
Tyne Dock, 67, Hudson Street .....  
Blyth, 19, Ridley Street .....  
West Hartlepool, Victoria Terrace .....  
Telegrams: "LAMBERT"  
"LAMBROS"  
NEWCASTLE  
"LAMBERT"

Glasgow, 78, St. Vincent Street .....  
Methil, 82, East High Street .....  
Burntisland, 20, High Street .....  
Telegrams: "LAMBERT"  
"LAMBROS"  
"LAMBROS"  
GRIMSBY  
Hull, Prudential Buildings .....  
Grimsby, 9, Cleethorpe Road .....  
Immingham, Dock Offices .....

Agents for:

NEW YORK: Lambert Brothers, Inc., 17 State Street. — BILBAO: (Spain). Lambert Brothers, Sociedad Limitada. Apartado 154, Etación 5. — PARIS: Société Anonyme Lambert Frères Charbons et Minerais, 29, Avenue de l'Opera.

**DAVID & WM. HENDERSON**  
AND COMPANY, LIMITED

**Shipbuilders, Engineers & Repairers**

BUILDING BERTHS  
UP TO 600 FT.

**GLASGOW**

PRIVATE GRAVING DOCK  
500' X 62'

Telegraphic Address: Meddoside, Glasgow

# THE CALORIC COMPANY

**RIO DE JANEIRO**

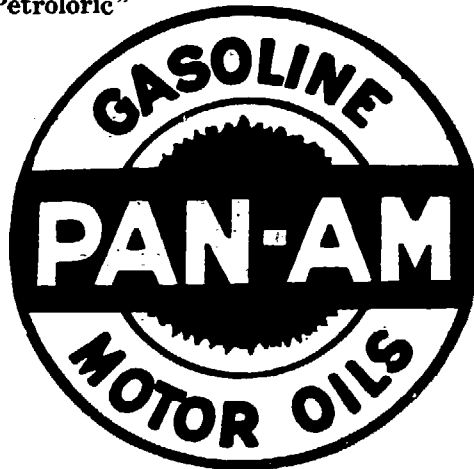
Praça Mauá, 7 — Edifício d'“A Noite” — 12.º andar

P . O. Box 1965

Telegraphic Address: “Petroloric”

Telephone 3-5860

**Fuel Oil**  
For industries,  
Railways, Steamers



**Diesel Oil**  
For internal  
Combustion Engines

Fuel Oil Stations at:

**PARÁ, PERNAMBUCO, BAHIA AND SANTOS**

## LAMPOR T & HOLT LINE BRAZIL SERVICE

FROM GLASGOW AND LIVERPOOL to: Bahia, Rio de Janeiro, Santos, Rio Grande do Sul, Pelotas & Porto Alegre. From New York and South Atlantic Ports to Brazil and the River Plate.

SAILINGS	From Glasgow	From Liverpool	From New York	Due Rio	Due Santos
LINNELL	7th April	14 th Apr.	—	5th May	7th May
DELAMBRE	5th May	12th May.	—	2nd June	4th June
BRONTE	9th June	16th June	—	7th July	9th July

### HOMEWARD SAILINGS

BALZAC ..... leaves Rio 23rd April for Leixões and Liverpool.  
 BUELA ..... leaves Santos 15th May, Rio 17th for Liverpool.  
 LASSELL ..... leaves Santos about 26th May for Liverpool.  
 LEIGHTON ..... leaves Rio about 27th June for Liverpool.

Cargo taken on through Bills of Lading, via Rio de Janeiro, to Aracajú, Victoria, Antonina, Paranaguá, São Francisco and Santa Catharina

All steamers, outwards and homewards, have accomodation available for Saloon Passengers at economic rates.

Apply to:—

Santos:  
F. S. HAMPSHIRE & Co. Ltd.  
Bahia:  
F. STEVENSON & Co., Ltd.  
Pernambuco:  
WILLIAMS & Co.

**LAMPOR T & HOLT, LTD.**  
**RIO DE JANEIRO**  
AV. RIO BRANCO, 46-4.º and.  
Tels. 3-4830 e 3-0085

S. Paulo:  
F. S. HAMPSHIRE & Co. Ltd..  
Buenos Aires:  
LAMPOR T & HOLT LINE.  
Montevideo:  
M. REAL AZUA.