

# Whelan's Brazilian Review

Rua Theophilo Ottoni, 41  
RIO DE JANEIRO

WEEKLY JOURNAL OF TRADE, FINANCE, ECONOMICS AND SHIPPING.  
ESTABLISHED 1898

CAIXA POSTAL  
809

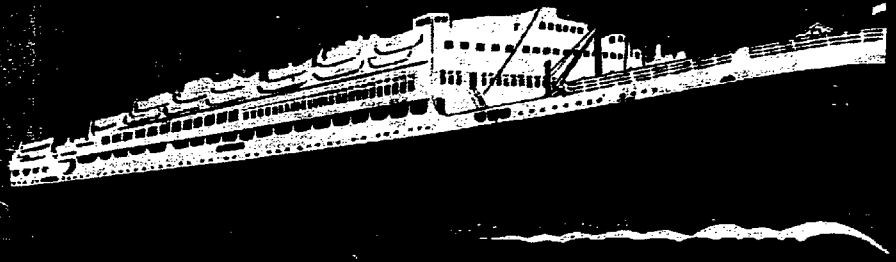
VOL. 26

RIO DE JANEIRO, MONDAY, APRIL, 16 1934

N. 16

TO &  
FROM

E  
U  
R  
O  
P  
E



Southampton Service

London Service

ALMANZORA	22 Apr.	HIGHLAND MONARCH	24 Apr.
ALCANTARA	6 May	HIGHLAND CHIEFTAIN	8 May.
ARLANZA	22 May	HIGHLAND PRINCESS	22 May
ALMANZORA	17 Jun.	HIGHLAND BRIGADE	5 June

**SIRIS** From Santos 21st April  
From Rio 24th April

**BRITTANY** From Santos About 25th April

Havre, Antwerp.  
Rotterdam, Ham-  
burg, U. K.  
Havre & Liverpool

THE ROYAL MAIL STEAM PACKET COMPANY — Agents: ROYAL MAIL LINES, LIMITED.

RIO DE JANEIRO: AVENIDA RIO BRANCO 51/55 — TEL. 4-8000

ALSO AT SANTOS, SÃO PAULO, BAHIA, PERNAMBUCO, RIO GRANDE, ETC.

## RIO DE JANEIRO LIGHTERAGE COMPANY LIMITED

Lighterage Contracts, Stevedores, Tug and Launch Owners, Salvage Operators.

III

Fleet—150 Lighters: 18,000 tons total capacity.  
**RAPID HANDLING OF CARGO GUARANTEED.**

Salvage Tug "Emily" equipped with Modern Salvage Appliances.

III

RIO DE JANEIRO  
**Av. Rio Branco, 9-2nd. floor,  
 Room, 232**

P. O. BOX 1164

TELEGRAMS — "LIGHTERAGE RIO-JANEIRO".

Codes — BENTLEY'S, A. B. C. 4th Edit:  
 LIEBER'S, A. 1.  
 LONDON — Dashwood House, Old Broad Street, E. C. 2.

III

ENQUIRIES INVITED.



**Government Officials, Bankers, Merchants and Publicists in 59 Countries Around the World**

read **The Tea and Coffee Trade Journal**

This paper is the greatest single factor for promoting good will in the tea and coffee trades. Its editor and publisher is

**WILLIAM H. UKERS, M. A.**

author, "All About Coffee" and "All About Tea" and for over 25 years, student, expert, advisor and counsellor on industrial and merchandising problems in the tea and coffee trades. An advertisement in The Tea & Coffee Trade Journal carries dignity and builds good will — "the only thing of permanent value".

**SUBSCRIPTION IN BRAZIL, \$4 per year**  
 Advertising rates on application  
 Agents for Brazil

**WILEMAN'S BRAZILIAN REVIEW**  
 RUA TEÓFILO OTONI 41 RIO DE JANEIRO  
 — 0 —  
**THE TEA & COFFEE TRADE JOURNAL**  
 79 WALL STREET, NEW YORK

# Booth Line, Liverpool

Regular Service of Passenger and Cargo Steamers Between

**NEW YORK, NORTH, MID and SOUTH BRAZIL**

(CALLING AT BARBADOS)

also between

LIVERPOOL, LONDON, HULL, HAMBURG, ANTWERP, HAVRE, ROTTERDAM, OPORTO  
 LISBON, MADEIRA, PARÁ, MANAOS, MARANHÃO, CEARÁ, PARNAHYBA, IQUITOS

Agents for NORTH and SOUTH AMERICA

PARÁ	PERNABUCO	Frederick von Shosten	BAHIA	} Wilson, Sons & Co., Ltd.
MANAOS	NATAL	Frederick von Shosten	RIO DE JANEIRO	
MARANHÃO	CABEDELLO	S. A. Wharton Pedroza	SANTOS	
CEARA	MACEIO	R. W. B. Paterson	RIO GRANDE DO SUL	
PARNAHYBA	VICTORIA	Arbuckle & Co.	PELOTAS	
IQUITOS	FLORIANOPOLIS	Guilherme H. Chaplin	PORTO ALEGRE	

PARANAGUA: Empresa de Melhoramentos Urbanos de Paranaguá. SÃO FRANCISCO DO SUL.  
 R. O. N. Addison. BARBADOS: H. Jason Jones & Co.

**THE BOOTH STEAMSHIP CO. LTD.**

CUNARD BUILDING — LIVERPOOL

**BOOTH AMERICAN SHIPPING CORPORATION**

17, BATTERY PLACE — NEW YORK

# Wileman's Brazilian Review

A WEEKLY JOURNAL OF TRADE, FINANCE, ECONOMICS AND SHIPPING

VOL. 26

Monday, April, 16, 1934

N. 16

**MAPPIN STORES**  
SOCIÉDADÉ ANÓNIMA INGLEZA

The hub of shopping activity in the Coffee Metropolis of Brazil — English spoken in all departments — Visitors are specially invited to make use of our British Library and Rest Rooms — Tea Rooms and Restaurant adjoining



## DEPARTMENTS

DRESSES & SPORTS WEAR  
TAILOR-MADES-COATS  
DRESSMAKING-FURS  
MILLINERY

UNDER WEAR  
BABY-LINEN  
CORSETS  
GIRLS DEPT.

SILKS  
MATERIALS  
HOSIERY  
GLOVES, ETC.

BOHEMIAN GOODS  
BAGS & VANITIES  
NEEDLE WORK  
PHOTOGRAPHY

COMPLETE  
OUTFITTING  
FOR MEN & BOYS  
TAILORING  
FOOTWEAR

Beauty Salon

Furniture  
& Carpets

Domestic  
Sections

Travel Bureau

## MAPPIN STORES - S. PAULO

London: 14, Henrietta St., W. — Branch at Rio de Janeiro Furniture & Furnishing only  
Ru: Senador Vergueiro, 147

## NOTICE

Attention is called to the following:

In future the rule relating to payment of subscriptions being made in advance will be strictly enforced.

Every subscription order must be accompanied by a remittance covering amount of same, failing which the order will not be executed.

We are obliged to take this step owing to the great difficulty experienced in collecting overdue subscriptions, some being outstanding from as far back as the year 1932.

## NOTES

### CURRENT EVENTS

President Roosevelt in a recent public speech defending his policy vigorously denied that his actions are communistic or socialistic.

Obviously there have been charges to this effect made by some of his own countrymen.

He went on to say that if his measures have

been revolutionary, the revolution has been peacefully accomplished.

It is rather significant that such remarks should have been found necessary, and, in view of the known activities of communism, one wonders what trouble the communist party in the U. S. A. is planning.

It is a matter for satisfaction that the threatened strikes in the country have been averted, i. e. the major strikes, small factions, endeavouring to foment trouble, do and always will exist.

The first public rebuff given to the President was in connection with the War Veterans Bonus bill. This was passed and it only remains to be seen what results will follow.

In Great Britain, the outlook is quite promising.

A Budget surplus, increase of employment, (it reads better to say — un-employment down), activity in shipyards, all go to show that the future holds a deal of promise.

The political situation in the country is undisturbed.

When we turn to Europe, we find quite another state of affairs.

France is still considerably excited. A recent arrival, a French citizen of standing and repute,

## Wileman's Brazilian Review

Established 1898

EDITOR — L. COURTNEY

OFFICES: R. THEOPHILO OTTONI, 41 3.º ANDAR  
RIO DE JANEIRO

Telephone: 3-1354 - Caixa do Correio (P. O. Box) 809  
Tel. Address: "REVIEW", Riojaneiro.

Redactor Responsavel: L. Courtney  
Redacção e Administração: R. Theop. Ottoni, 41-3.º

Subscription (Payable in Advance): —  
Brazil, 100\$000 per annum. Abroad £ 5 per annum.  
Separate copies 2\$000. Back Numbers 2\$500 per copy.

### ADVERTISING RATES ON APPLICATION

#### AGENTS

SAO PAULO & SANTOS:— H. D. Weed & Cia. Ltda.,  
Rua Libero Badaró, 51-sob. São Paulo.

NEW YORK:—"The Tea and Coffee Trade Journal",  
79, Wall Street.

COPENHAGEN:— "The Scandinavian Shipping  
Gazette", 38 Vestre Boulevard.

... Notice:— The Editor is not responsible for Correspondence or Articles signed with the writer's name or initials, or with a pseudonym, or that are marked "Communicated". The Editor must likewise not necessarily be held in agreement with the views therein contained or with the mode of expression.

Original articles submitted for publication must be considered, unless otherwise arranged, exclusive to and the sole property of the Review.

In accordance with the Brazilian Press Law, no correspondence or contribution will be published in this Review unless authenticated by the date, name, and address of the contributor, though not necessarily for publication.

Announcements concerning subscribers and friends are inserted free of charge.

## Rio Cape Line Ltd.

Direct Cargo Service from Rio de Janeiro and Santos to South and East African Ports

THE JAPANESE STEAMER

### HAWAII MARU

(Under Contract)

Sailing 10th May 1934

Cape Town, Mossel Bay, Algoa Bay, East London, Durban, and Lourenço Marques

Followed by

### ARIZONA MARU

Sailing 9th June 1934

For further particulars apply to:  
HOULDER BROTHERS Co (BRAZIL) LTD.

Agents for the Rio Cape Line, Ltd.

AVENIDA RIO BRANCO, 63/67

Telephones 4-5261 and 4-0769

RIO DE JANEIRO

# MAILS during April & May 1934

### TO ENGLAND & EUROPE:

FROM	DEP. Rio	Ship	Destination	Phone Rio N°
B. A.	17	Balzac	Liverpool	3-4830
B. A.	17	Flandria	Amsterdam	2-9900
B. A.	17	Almeda Star	London	4-7200
B. A.	18	General S. Martín	Hamburg	4-1582
B. A.	20	Florida	Genoa	3-2930
B. A.	22	Almanzora	Southampton	4-8000
B. A.	22	Augustus	Genova	3-5840
B. A.	24	High Monarch	London	4-8000
B. A.	25	Pionier	Antwerp	3-4827
B. A.	28	La Coruna	Hamburg	4-1582
B. A.	28	Cap Arcona	Hamburg	4-1582
B. A.	29	Formose	Havre	4-6207
B. A.	May 2	Sierra Nevada	Bremen	4-6121
B. A.	2	Neptunia	Genoa	3-5840
Santos	3	J. Charlotte	Antwerp	3-4827
B. A.	6	Alcantara	Southampton	4-8000

### FROM ENGLAND & EUROPE:

FROM	Arrive Rio	Ship	DEP. Rio	Destination	Phone Rio N°
London	16	Hig. Chieftain	16	B. A.	4-8000
Hamburg	16	G. Osorio	16	B. A.	4-1582
Antwerp	19	J. Charlotte	19	Santos	3-4827
Trieste	19	Neptunia	19	B. A.	3-5840
Hamburg	19	Cap Arcona	19	B. A.	4-1582
Havre	21	Lipari	21	B. A.	4-6207
Southampton	22	Alcantara	22	B. A.	4-8000
Antwerp	23	Zeelandia	23	B. A.	2-9900
Marseilles	23	Alsina	23	B. A.	3-2930
Hamburg	24	M. Pascoal	24	B. A.	4-1582
London	30	Avila Star	30	B. A.	4-7200

### TO U. S. A. & JAPAN

FROM	DEP. Rio	Ship	Destination	Phone Rio N°
B. A.	19	Eastern Prince	New York	4-5261
B. A.	21	Delnorte	New Orleans	3-1455
B. A.	22	Montevideo Maru	Am. & Japan	4-7200
B. A.	26	Western World	New York	3-2000
B. A.	May 3	Northern Pr.	New York	4-5261
B. A.	9	Hawaii Maru	Afr. & Jap.	4-5261
B. A.	12	Delmundo	New Orleans	3-1455
B. A.	10	Southern Cross	New York	3-2000

### FROM U. S. A. & JAPAN

FROM	Arrive Rio	Ship	DEP. Rio	Destination	Phone Rio N°
New York	20	Northern Pr.	20	B. A.	4-5261
New York	27	Southern Cross	27	B. A.	3-2000
Afr. & Japan	30	La Plata Maru	30	B. A.	4-7200
Afr. & Jap. May	1	B. A. Maru	1	B. A.	4-7200
N. Orleans	2	Delsud	2	B. A.	3-1455
New York	4	South. Prince	4	B. A.	4-5261
New York	11	Amer. Legion	11	B. A.	3-2000

### AIR-MAIL SERVICE

#### To & From South America

FROM	Service by	Arrive Rio	DEP. Rio	Destination
Pará	Panair	15	17	Pará
.....	Condor	—	17	Porto Alegre
U. S. A.	Panair	18	19	B. A.
Porto Alegre	Condor	18	19	Natal
Natal	Condor	19	20	Porto Alegre
B. A.	Panair	20	21	U. S. A.
Porto Alegre	Condor	21	—	.....
Europe	Air France	21	21	Chile
Chile	Air France	22	22	Europe
Pará	Panair	22	24	Pará
.....	Condor	—	24	Porto Alegre

stated that the country may be at any moment, once again in the throes of revolutionary strikes. President Doumergue has at present considerable support but French temperament is a very doubtful factor in estimating peace and tranquility.

Germany is once again, as not long ago, proving herself a rather disturbing element. On this occasion her Army and Navy estimates are causing great uneasiness not only in France but also in Great Britain and U. S. A.; The increases sanctioned are so enormous that the other nations may well take cause for alarm.

In Brazil, one matter of vital importance is the settlement of the dispute with France.

Other events occupying attention are the changes in the Duties on certain Imports and the new general Tariff on Imports and Exports.

When the latter is made public a great deal of comment is sure to follow.

Re. Coffee and general Industrial activity there is little to record.

Coffee has receded somewhat but manufactures are steady, with Cotton showing some activity.

As we have remarked in previous issues Cotton will be prominent in future developments.

### COTTON IN BRAZIL

During the current year Cotton planting in Brazil should prove of absorbing interest.

Even now in the State of São Paulo everyone is talking Cotton just as a few years back everyone talked Coffee.

All who have land or money are going in for Cotton planting and it would really seem that too much will be undertaken.

This year's production in the State of São Paulo, it is estimated, will reach about 80,000,000 kilos.

This figure in view of the fact that the State only turned to Cotton as a last hope during the Coffee crisis must be considered remarkable.

Nevertheless though the figure is a highly satisfactory one it is actually only about 1% of the World's "white-gold" production.

In the past Brazil's share of the world's cotton production has been about .06%, of which S. Paulo State has been responsible for about half.

Brazilian Cotton is rated very high, its quality being accepted as superior to American.

The importance of developing this industry can therefore be thoroughly realised.

Under present indications, no matter how much Cotton is produced in Brazil, a market will be found for same.

It is reported that São Paulo State will double the area under Cotton by 1935, affording an additional revenue, as also a stand by in the event of any Coffee crop failure.

In this connection must also be remembered that the local production of high-grade Cotton in large quantities will assuredly lead to expansion of industrial enterprises to absorb same.

Actually the latter is proceeding so rapidly that the question of Brazil's having any surplus Cotton for export must be ruled out for some time to come.

## Information Branch of "Wileman's Brazilian Review"

In order to meet a growing and important demand from our readers, we have created a general Intelligence Department which will enable us to supply any information desired to SUBSCRIBERS and ADVERTISERS ONLY.

Our readers are well aware of the facilities at our disposal for obtaining first hand and absolutely reliable information in connection with all markets in Brazil, not to mention economic, commercial and industrial conditions. We are in a privileged position, therefore, to supply information by cable or letter on any subject, such as opening and closing prices of coffee and/or other produce, exchange, reports on market conditions or on any matter relating to this country.

It is to be understood that the intelligence or consulting branch of this Review will be at the disposal of SUBSCRIBERS and ADVERTISERS ONLY.

With Coffee and Cotton as her main sources of revenue, Brazil can look forward to a bright future.

### THE FRANCO-BRAZILIAN DISPUTE

The French attitude in relation to French frozen credits in Brazil was clearly indicated when they could not get all they wanted in that regard.

The results were a prohibitive tariff imposed by France in July, 1933, on imports from Brazil, followed by retaliatory measures by the latter country.

The volume of business affected was very considerable.

It is satisfactory therefore to note that a thorough understanding has now been reached by both governments concerned and the various measures adopted by both sides annulled.

In our next issue we hope to publish full details of the agreement come to.

Complete freedom of trading between nations remains the ideal, but it is not the least merit of the bargaining instrument now employed in negotiating trade agreements that it approaches that end on the satisfactory basis of give and take.

For in time it may be that the full achievement will be attained by sections as it were, as the "results" materialise.

*The Investors Chronicle*

### CUSTOM HOUSE DUTIES

A circular from the Minister of Finance; "Considering that prior to the promulgation of Decree 24,023 of March 21st last, it was not compulsory to import merchandise direct in order to benefit in the reductions or exemption of customs-duties; hereby brings to the knowledge of Customs-Inspectors, that all merchandise or material shipped from port of origin on or before the 31st March last will be absolved from observing the conditions of article 8, chapter 'b' of above mentioned Decree.

**FOR KEEPING UP-TO-DATE**

With the latest news  
from your homeland  
and for listening to  
your favorite music  
you only require


**THE****NEW****RADIO**

Request a demonstration in your own home from

**SOC. ERICSSON DO BRASIL, LTD.**

Rua General Camara, 58

Tel 4-1930

RIO DE JANEIRO

**LONDON FINANCIAL POSITION**

29th March 1934.

The latest figures show a surplus of national revenue over expenditure of fully £28,000,000 and it will be very disappointing if the financial year does not end with a realised surplus of at least £30,000,000, thus strengthening the belief in an early reduction of the income tax. This has given additional firmness to gilded securities, among which, 3½ per cent War Loan has risen to 104 — the highest price yet reached by the stock.

The trade outlook is also favourable, and the industrial companies' reports now appearing are for the most part encouraging. Among the latest Rolls-Royce (which probably earns more from its aero engines than from its famous motor cars) secured net profits in 1933 of £216,726, or £65,747 more than in 1932, while the dividend on the ordinary stock is raised from 10 to 17 per cent. A writer in the "Times Trade & Engineering Supplement" analyses the reports of 121 leading companies in 11 main industrial groups in order to obtain a comparison between 1933 and the three preceding years. As a result of the analysis the opinion is formed that recovery has been more striking than the figures of profits seem to show, for the latter cover a period of several months of depression and only the first few months of revival. Above all, the writer says, the recovery has been brought about without artificial expedients and interference. Presumably, however, he does not ignore the extent to which tariffs altered the situation.

The economic situation in Germany is naturally causing much concern. The gold cover for the note issue of the Reichsbank has further fallen to 8 per cent, and in order to improve the position as regards the holding of foreign exchange it is proposed to suspend imports of certain raw materials. To use a homely expression, this seems very much like cutting off one's nose to spite one's face for the manufacturing and export trade of Germany must be adversely affected by a curtailment of raw material imports, apart from the risk of a rise in the price of articles covered by the embargo. Apparently this proposed action of Germany is chiefly directed against the United

States and Great Britain, the country's principal creditors, and there is an unpleasant reflection that the threatened suspension of imports may be used as a weapon in any new negotiations with the foreign bond-holders.

It is not surprising, therefore, that the German Government and municipal securities quoted in London have fallen severely, though there has been a recovery from the worst. Foreign bonds generally have been fairly steady, with a demand for Argentine, Chinese and Japanese issues. The last were bought on the friendly character of the note exchange between Japan and America.

English industrial shares are still very firm, with considerable activity at higher prices in brick companies issues, owing to the Government plan of slum clearance and re-building. It is probable, however, that the rise in prices is being overdone, as such movements usually are. Notice has been given of a Betting and Lotteries Bill which if enacted would have important consequences in various directions. Primarily it appears to be aimed at the great sweepstake to benefit Irish hospitals, for the provisions would preclude the publication in English newspapers of any information calculated to stimulate interest in that event. The measure would also hit greyhound racing, and one effect has been a severe fall in shares of companies that exploit that form of sport, though everybody recognised that they are extremely speculative.

No surprise was caused by the passing of interim preference dividends for the current financial year by the Buenos Ayres Gt. Southern and B. A. Western companies, for obviously the directors will await the results of the full year before making any payment. Argentine railway stocks were adversely affected by reports indicating serious damage to the maize crop in certain areas. The Government bonds have been well maintained, with a good demand for U. K. and Argentine Trust certificates. Brazilian Government issues are a steady market, but dissatisfaction is still apparent in regard to the three year debt settlement scheme, especially in the case of the San Paulo Coffee 7½ per cent loan.

The circumstance is commented upon that the Chilean Budget again makes no provision for the foreign debt service, though recent reports indicate some improvement in economic conditions in the country. The various bonds, of course, are still heavily depreciated, and are a more or less nominal market.

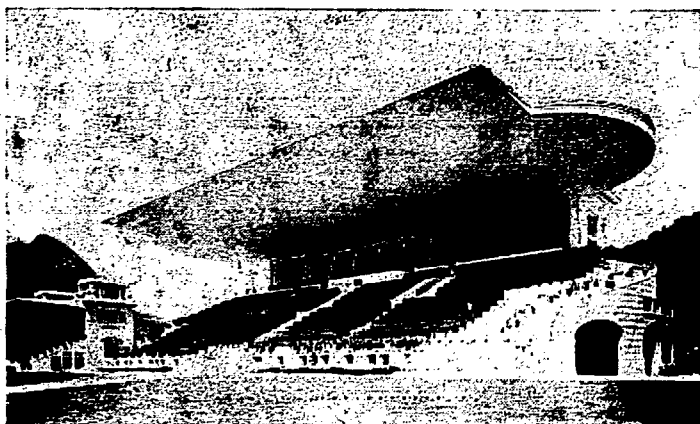
**PHILIP MEDAWAR**

**SPECIALISTS IN PRECIOUS & SEMI PRECIOUS STONES**

**DIAMONDS — RUBIES — EMERALDS — TOPAZES  
TOURMALINES — AGUAMARINES — AMETHYSTS  
ETC.**

Rio de Janeiro  
RUA S. PEDRO, 80

Post Office Box 1024  
TELEPHONE 4-5224



HIPPODROMO BRASILEIRO JOCKEY CLUB

# CONCRETO ARMADO



PONTES - VIADUCTOS - CAES - MOLHES-  
DIQUES - BARRAGENS - ESTALEIROS -  
ESTACARIAS - TUNNEIS - STADIUNS -  
EDIFICIOS - SILOS - ETC. - ETC.

# CHRISTIANI & NIELSEN

ENGENHEIROS EMPREITEIROS

BAHIA — PORTO ALEGRE — RIO DE JANEIRO — SANTOS — SÃO PAULO  
BUENOS AIRES — COPENHAGUE — HAMBURGO — HAYA — LENINGRADO — LONDRES  
MELBOURNE — MONTEVIDEO — OSLO — PARIS — STOCKHOLMO — WELLINGTON

## PROSPECTING FOR DIAMONDS

There are several specific gravity solutions on the market. Of these SONSTADT'S SOLUTION is the most reliable and convenient for prospecting purposes. This solution consists of a potassium iodide (K. I.) and mercuric iodide (Hg. 2. I) in the ratio of 1:1-239 to make 500 grain added to 80 c. c. of distilled water, filtered and evaporated until a crystalline scum begins to form, or until a fragment of tourmaline floats. The diamond and its satellites mentioned above will sink to the bottom.

The Solution should be obtained in glass vials with a capacity of one ounce of distilled water. The bottles should be fitted with glass stoppers and preferably have a glass cap over the stopper. The cap is an additional precaution against evaporation and can also be used in taking gravities as a convenient quantity of solution can be poured into the cap and the specimen inserted therein direct instead of being dropped into the bottle itself. When glass caps are not procurable the bottles should be sufficiently wide mouthed to permit of the insertion of pliers for removing specimens. It should be noted that Sonstadt's Solution is poisonous and that care must be exercised in its use. Only steel or vulcanite pliers withstand its corrosive action. Specimens should be washed immediately after removal from the solution.

All minerals that float on the gravity solution can safely be rejected excepting mica, but those that sink must be examined for the characteristics previously described in order to determine whether

they belong to the satellite group or whether, perchance, any of them should prove to be a diamond.

An alternative to gravity solutions is provided by the recording Jolly balance recently devised by Professor E. H. Krauss and manufactured by Eberbach and Son Company, Ann Arbor, Michigan by means of which readings accurate to the second decimal can be obtained from a graduated scale and a simple calculation.

**HARDNESS SET.** The identification of minerals is facilitated by the determination of their relative degrees of hardness and is most conclusive in the case of the diamond which can only be scratched by the diamond itself and then only by exerting considerable pressure.

For practical purposes prospectors should be provided with a set consisting of:

- 1) A glaziers diamond . . . . . Hardness 10
- 2) Piece of corundum . . . . . Hardness 9
- 3) Topaz . . . . . Hardness 8

These minerals are easily procured and should be suitably mounted so as to present a proper cutting edge or point by cementation into a wooden handle.

A little practice will enable the operator to apply this test with facility. The specimen should be held firmly between the thumb and fingers of the left hand and the sharp point pressed with force against the flattest side of the mineral under examination and then drawn across it. If a decided scratch is visible the specimen is not a dia-

FINEST AND LARGEST ASSORTMENT OF

## BLUE AQUAMARINES

Diamonds, Topazes, Amethysts, etc. (Aquamarine necklace purchased by Duchess of Westminster.)

**BRAZILIAN CURIOSITIES: HUMMING-BIRD DESIGNS — A NEW FEATURE IN BRAZILIAN CURIOS**

Cigar and Cigarette cases, Pouches, purses and handbags made from reptile skins. Wood carving, Skins, Wooden lamps of Paraná, etc.

Rare Collections of Brazilian Butterflies and Moths

(Collections of same were purchased by H. R. H. the Prince of Wales, also by President Hoover)

Come and see our display, close to the Avenida and opposite to the Flower Market.

(We execute special designs to your order)

### ZITRIN IRMÃOS

110 — 112 RUA BUENOS AIRES 110 — 112

gems of economic value that are likely to be found during prospecting operations in Brazil.

Mineral	Hardness	Sp. Gravity
Diamond	10	3.5
Sapphire	9	3.9 to 4.1
Ruby	9	3.9 to 4.1
Topaz	8	3.4 to 3.6
Zircou	7.5	4. to 4.7
Garnet	6.5 to 7.5	3.15 to 4.3
Spinel	8	3.5

The above mentioned minerals will sink in Soustads Solution.

Beryl	7.5	2.6 to 2.7
Emerald	7.5	2.5 to 2.7
Jourmaline	7. to 7.5	2.9 to 3.3
Amethyst	7	2.5 to 2.8

Satellites of the Diamond.

Olivine	6—7	3.3 to 3.5
Pyrope Garnet	6.5—7.5	3.15
Ilmenite	5—6	4.5 to 5.
Enstatite-Bronzite	5.5	3.1 to 3.3
Diopside	5—6	3.2 to 3.38
Cyanite	5—7.25	3.45 to 3.7
Phlogopite	2.5—3	2.78 to 2.85

To be continued

## THOMAS DRAPER

MINING ENGINEER

Caixa Postal 2955 — Rio de Janeiro

mond. Should no scratch be visible even with the aid of a magnifying glass no further test will be required but it is advisable to apply the hardness test on several faces of the same stone or more than once on the same face. The corundum and topaz are used if necessary on the satellites. The following table shows the hardness of different



# Furness Prince Line

NEW YORK- SOUTH AMERICA

**LUXURIOUS ACCOMMODATION — FIRST CLASS PASSENGERS ONLY**

RIO — NEW YORK 13 DAYS

## EASTERN PRINCE

WILL SAIL ON APRIL 19TH FOR TRINIDAD AND NEW YORK

## NORTHERN PRINCE

DUE FROM NEW YORK APRIL 20 TH FOR SANTOS, MONTEVIDEO AND BUENOS AIRES

TRIANGULAR TOURS — NEW YORK — EUROPE — BRAZIL AT SPECIAL RATES

## Houlder Brothers & Co. (Brazil) Ltd.

Rua do Comércio, 35 — SANTOS

2001 & 3728

Avenida Rio Branco, 63-67 — RIO DE JANEIRO

Tel. 4-5261 and 4-0769



**OUR READERS**

We invite the views of our Readers on the present composition of the Review and also improvements in same.

**INTERESTING BREVITIES**

The rumour that the Royal Dutch Shell Oil Co. had arranged with the Argentine Government to exploit all the Oil in the Country has been officially denied.

Imports of foreign beef into Great Britain are to be still further restricted.

The Argentine attitude at the Rome Wheat Conference is causing some concern.

The recent trade agreement reached between the Argentine and Italy provided for the annual sale of 30.000 tons of chilled beef by the former who undertake to buy 6.000 tons of tomato sauce in return.

The first shipment of beef 250 tons has just been made.

Chile's Custom-House Income for March 1934 amounted to 22 million pesos.

Nitrate export for same month: 2.131.000 metric quintals.

48 fields were contracted for by the Brazilian

**BLUE STAR LINE**  
The Line of Comfort, Service, Courtesy



**F**ORTNIGHTLY passenger sailings and regular weekly freight service to Europe and River Plate ports. Call the nearest Blue Star Line representative for further information.

**SÃO PAULO**  
Rua de Quitanda, 12

**SANTOS**  
Rua 15 de Novembro, 199

**RIO DE JANEIRO**  
Avenida Rio Branco, 37



**MUNSON SS. LINE**

The only North - American Luxurious Liners  
— on the "BRAZIL - NEW - YORK" route —

21 Thousand Tons each — First, Tourist, & Third Class Accommodation — Special prices for TRIANGULAR VOYAGES "RIO-NEW YORK-EUROPE-RIO" or

"RIO-EUROPE-NEW YORK- RIO"

**WESTERN WORLD**

**SOUTHERN CROSS**

TO FOLLOW :

SOUTHERN CROSS

AMERICAN LEGION

due from River Plate April 26th, 1934 will sail the same day for Trinidad & New York

due from New York April 27th, 1934 will sail the same day for Santos, Montevideo & Buenos Aires

due from River Plate May 10th, 1934, will sail the same for Trinidad & New York

due from N. Y. May 11th, 1934, will sail the same day for Santos, Montevideo & Buenos Aires

FOR RATES & FURTHER INFORMATIONS

The Federal Express Co

**RIO DE JANEIRO - SANTOS - SÃO PAULO**



**DRINK EVERYWHERE**

**WHITE HORSE**  
WHISKY  
CAVALLO BRANCO

Bureau of Textile Plants by March 31, 1934, making a total of 1,169 hectares. The largest field is in São Paulo State, hectares 544.

The Sindicato Usineiro de Recife sold practically all its disposable stock of Sugar to the Sociedade Exportadora Ltda. 300,000 bags were sold at 40,000 per with option for 200,000 more at same price.

Rubber stock in Great Britain increased by 302 tons during week ending April 1st, totaling now 40,480 tons. Liverpool stocks diminished by 105 tons to 54,004.

A special credit of 18,000 contos was opened by the State of São Paulo to recompense citizens for merchandise and possessions requisitioned during the Revolution of 1932.

From the Port of Bahia in a single day 31st March 1934, 6228 bags of Coffee, 17,935 bags of Cocoa and 29,621 bales of Tobacco leaf, were exported.

Export-tax for Cotton was lowered 100 réis.

U. S. A. Budget Deficit for the first 9 months of present financial year amounted to 2,542,299,000 dollars.

1,208 bags of Coffee were shipped to foreign countries and 21,460 to national destinations making a total of 1,229,642 bags for the month of March, as per communication of the D. N. C.

A number of Coffee importers from some of the important markets of Europe are expected to visit the Coffee-growing centers of Brazil in order to get personally acquainted with modern systems of Coffee culture and preparation.

Shipments of Coffee in Transit or to be Transferred from Minas-Geraes State to the Port of San-

tos have been suspended till further orders due to excess of stock at said Port.

Japan's proposal that next year's (1935) Naval Conference should be postponed has been rejected by Great Britain and the U. S. A.

Japan makes a new interesting proposal that Japan and U. S. A. should discuss the advisability of division of the Pacific. Japan recognising United States supremacy in the Eastern in return for recognition of Japan's Supremacy in the Western Pacific.

Great Britain does not agree.

British Home Stores one shilling Shares, are quoted at 23/-. Control recently passed from American to British.

The new Brazilian Customs Tariff is being eagerly awaited.

We understand the Decree confirming same will be signed very shortly.

Brazilian Trade negotiations with Great Britain and the U. S. A. will shortly be initiated.

An indication of how keen German Business men are is shown by the fact that cases are recorded of British goods being ordered in Brazil through German buying houses.

The housing and slum clearing problems in Great Britain are being energetically tackled by the present Government.

Low production cost in Japan, which have enabled her to compete successfully in world markets is meeting with commendation in several quarters.

It is pointed out that Japan has, at great trouble and expense worked out schemes to reduce production costs to meet the reduced buying power of the world's population.

A special American Envoy is in Great Britain, going later to the continent to study economic problems of international interest.

Experts estimate the world's Oil reserves will be exhausted in about 40 years time. This figure may, however, prove to be completely wrong if drilling improvements continue to be manifested at the same rate as the last few years have witnessed.

Supply of electric current in the interior of the Argentine Republic is apparently in a chaotic state. It is suggested that the Federal Authorities take over control or supervision of same.

The new German "Lufthansa" Airmail carried "Mails" across from Brazil to Germany in 2 days and 23 hours. A record delivery.

U. S. A. interest in the Latin-Americas is shown in the fact that the said countries are not included in the recent measures adopted by the former re-defaulting creditors.

**LONDON PRODUCE NOTES**

March, 29th. 34.

**— SUGAR**

The London Produce markets were rather quieter during the week in view of the approaching holiday. Sugar continued very dull and practically featureless. Raw kinds remained about steady but business was confined to a few parcels of foreign 96 per cents, April shipment, at 4/10 1/2d per cwt, c. i. f., United Kingdom. Refiners made no alteration in their quotations and trading was only moderate.

**— RUBBER**

The rubber market opened with a quiet tone but improved later on news that the threatened trouble in the American motor industry had been averted. Prices rose 3/32d per lb. but renewed selling and withdrawal of support caused easiness again later and the market closed dull. Smoked sheet, spot, sold from 5 1/2d to 5 7/32d to 5 1/8d per lb.

**— TEA**

At the closing tea sales prior to the Easter recess demand was more active and, although there was some irregularity in medium teas, common and fine sorts sold well with a hardening tendency.

**— COFFEE**

Coffee was a quieter market and a fair amount of the offering was withdrawn from sales. Good liquoring sorts made firm rates and the lower qualities were steady where sold.

**— COCOA**

In the cocoa futures market prices opened with a firm tone; the market being influenced by a more active demand for actual cocoa and, later, by a revision in the estimate of the Gold Coast 1933-1934 crop. This is now put at 200,000 tons compared with a previous estimate of 188,000 tons. At the close the market was quieter, due to pre-holiday realizing. In the shipment section, good fermented, March/May shipment, sold from 22 1/6 to 23s per 50 kilos, c. i. f., Continent.

**— JUTE**

Jute opened easier prices receded 2/6 to 5s per ton, owing to the temporary embargo placed on imports of jute by the German Government, which operates until May 5th next. The "order" caused a good deal of selling, especially near shipments and first marks, March/April, sold down to £15 18/9 per ton, c. i. f. The Calcutta market, which was closed on Monday and Tuesday, did not appear to be much affected when it re-opened. This fact created a steadier tone here; sellers adopting more reserve. Hessians and twills were very quiet throughout.

Security

First

**ROYAL INSURANCE**

Company Limited.

At the service of the community in Brazil since  
1864. (Dec. N.º 3224)

Funds Exceed £43,000,000.

Capital and reserves deposited in Brasil,  
Rs. 3.000:000\$000

Head Office in Brasil:

RUA BENEDICTINOS, 17 — 3rd FLOOR  
P. O. Box 775. Tel.: 4-6165

Telegr.: "Royin"  
RIO DE JANEIRO

Agencies in:

São Paulo, Santos, Rio Grande, Pelotas, Porto  
Alegre, Pernambuco, Manaus e Pará.

Established in 1836.



**THE  
LIVERPOOL  
&  
LONDON  
&  
GLOBE**

Insurance Co. Ltd.

Funds exceed £25,500,000,

Capital deposited in Brazil: Rs. 1.500:000\$000

Head Office in Brazil:

RUA BENEDICTINOS, 17 — 3rd FLOOR  
P. O. Box 572. Telegr.: "Lalag". Tel.: 4-3885  
RIO DE JANEIRO

Also represented in all the principal  
cities of Brasil.

KNOWN THE WORLD OVER

# FIVE O'CLOCK TEA (CHA' SOL)

UNEQUALLED AROMA, UNIQUE AMONG TEAS  
AND **that** CERTAIN FLAVOR YOU LIKE

ALWAYS STANDARD QUALITY

50 years of continuous success

FROM ALL GROCERY STORES

or directly from the Representative

**ERNEST E. CROMACK**

AVENIDA RIO BRANCO, 33

Phone 3.2638

RIO DE JANEIRO

SAMPLES FREE ON REQUEST

## — HEMP

In the hemp market, Manila grades were dull and unaltered. African sisal tended easier under freer offers; this market also being affected by the German embargo. Tanganyinka n° 1, April/June sold from £17 12/6 to £17 10s per ton, c. i. f.

## — TIMBER

Following the satisfactory results of recent mahogany auctions, supplies have again been reduced to negligible proportions and unless further shipments shortly arrive, auctions in the near future will be infrequent. Business is reported as only moderate our prices of all wood of character remain steady. From Burma, fair quantities of teak logs, boards, planks, scantlings and other conversions have arrived. A fair quantity of Philippine hardwoods has arrived from Manila.

## — FRUIT

Oranges were in very moderate supply and there was a fair demand; Denia Valencia 240's, sold at 11s. to 18s. up to 27s; Orihuela 240's, 16s. 6d. to 21s.; Jaffa 180/240's 11s. to 15s. 6d. and Californian 150/288's, 11s. 6d. to 16s. per box. Bananas were unchanged; Canary 12s to 13s 6d. per crate; Jamaica 9½d. to 10½d., and Brazilian 6d. to 8d. per dozen. Lemons were cheaper; Messina, 9s. to 19s. per case. Grape fruit, Jamaica 70's 9s. 6d. to 11s. and Porto Rico 70's, 9s. to 10s. per box. Imports from Brazil last week 35,000 bunches of bananas.

## — HIDES

Prices show little change on the week with B. A. Americanos at 5¾d.; B. A. Becerros 6¼d.; B. A. Inservibles 3¾d.; Buyabanos at 5¾d. Chubuts at 6d.; Sierra Cordoba 6½d. In Brazils, some Mendes cows sold at 3d. A moderate business was done in Africans at steady rates. Capes sold at 5¾d. and 4¾d. for d/s first and seconds and at 6d. and 5d. respectively for drys.

## RATE PRICE AND CONSUMPTION OF COFFEE

The "Table" below written, compiled by the Department of Commerce at Washington — U. S. A. shows the movement of Coffee Importation in the U. S. A. in the first seven months of the last two crops.

It is really interesting to verify how the Brazilian has gained ground to the detriment of Coffee from other Countries.

Origin	IMPORTATION		Percentagem on General Total	
	July to January	July to January	July to January	July to January
Central America . . . . .	164.935	85.966	3.4	1.5
Mexico . . . . .	65.613	66.031	1.4	1.1
Antilles . . . . .	82.805	7.135	1.7	0.1
Brazil . . . . .	2.455.728	4.224.496	50.5	72.5
Colombia . . . . .	1.376.807	1.245.612	28.3	21.4
Venezuela . . . . .	175.148	96.677	3.6	1.7
Aden . . . . .	12.896	8.109	0.3	0.1
Dutch Indies . . . . .	362.231	11.067	7.5	0.7
Other Countries . . . . .	160.991	52.466	3.3	0.9
<b>TOTAL . . . . .</b>	<b>4.857.154</b>	<b>5.827.559</b>	<b>100.0</b>	<b>100.0</b>

From above figures it may be verified that

Brazil has improved from 50, 5% in 1932/33 (July to January) to 72,5% in 1933/34.

At the same time, Brazil's closest competitor in fine Coffees, Colombia lost from 28, 3% to 21, 4% in 1933/34 and the most serious Competitor in lower grade Coffees, Dutch Indies, saw their quota reduced from 7,5% to 0,7% in 1933/34.

In our opinion the factor "Price" is certainly the principal cause of Brazil's Coffee successful return in the U. S. A. markets.

## DECREE N. 24.023 OF MARCH 21st, 1934 Regulating the Concession of Exemption and or reduction of Customs Duties

(Continuation)

### Chap. III

Exemption of Duties on Imports for consumption will be conceded to:

1) Goods destined for public experiments if accompanied by their propagandists.

2) National Merchandise or Foreign goods re-exported after having previously paid import Du-

ties that, having been exported, return to this Country within one year from the date of leaving Brazil.

3) Scenic Materials, or animals belonging to Companies of Entertainment.

4) Books, pamphlets, and other original works, literary and artistic, in accordance with international conditions assigned by Brazil.

5) Animals destined for Zoological Gardens also dead specimens to Museums, and any pictures, models, etc. that have been imported to be shown in Museums and establishments of Public Instruction.

6) Fresh Fruit, from foreign countries that

many Installation for the manufacture of Beer with National Barley.

14) Ordinary mats made of crude wheat, oat or rye-straw, destined for the packing of Banana crates for Exportation.

15) Machinery and apparatus for the manufacture of Linseed oil, conditionally, that it is to be employed only for manufacture of oil with seeds of National production.

16) Materials and Machinery necessary for first Installation with the purpose of producing Caustics soda and its Bye-products, and also for Quebracho extracts and bye-products.

17) Common paper, white or coloured, rough

# WILSON, SONS & CO., LTD

**HEAD OFFICE: LONDON** IMPORTERS & MERCHANTS **HEAD OFFICE: LONDON**

BRANCHES & AGENCIES AT CARDIFF - BARRY  
ALEXANDRIA - DAKAR - MADEIRA  
LAS PALMAS - S. VINCENT C.V.  
PERNAMBUCO - BAHIA  
SANTOS - S. PAULO

TELEG. ADDRESS... for all branches  
**"ANGLICUS"**

BRANCHES AT RIO GRANDE DO SUL  
PORTO ALEGRE - LA PLATA  
MONTEVIDEO - BUENOS AIRES  
ROSARIO DE SANTA FE  
SANTA FE - BAHIA BLANCA

**COAL DEPOT PROPRIETORS**

BUNKER CONTRACTORS FOR ALL PORTS  
LARGE STOCKS OF ALL CLASSES OF BEST COALS  
OCEAN MERCHANT STEAM COAL  
FOUNDRY COKE - SMITHY NUTS  
ALL MODERN HANDLING FACILITIES - FLOATING CRANES

**ALLIANCE ASSURANCE CO. LTD LONDON**

RESERVES EXCEED £30,000,000  
FIRE & MARINE INSURANCE  
AIR & RAIL TRANSIT  
MOTOR CAR (ACCIDENT) INSURANCE

**SHIP REPAIRERS - ILHA DA CONCEIÇÃO**

MECHANICAL and MARINE ENGINEERING  
RECONDITIONING and REPAIRS TO SHIPS.  
MODERN EQUIPPED WORKSHOPS, FOUNDRY and SLIPWAY  
PROPRIETORS OF TUGS, LIGHTERS and SALVAGE APPLIANCES  
STEAMSHIP AGENTS - PASSENGERS and FREIGHT  
★ BLUE STAR LINE ★ OSAKA SHOSHEN KAISHA  
BOOTH STEAMSHIP CO. LTD  
FRILAND SOUTH AMERICA LINE  
YBARRA LINE

For Information and Prices  
Post Office Box - 751  
TELEPHONE: 4-7200

**RIO DE JANEIRO**

**LARGE STOCKS of MERCHANDISE**

GOODS MARKED ARE THE BEST  
**WILSON**  
REGISTERED TRADE MARK

**CONSTRUCTION MATERIALS in GENERAL**

IRON SHEETS and PLATES  
GALVANIZED - BLACK - CORRUGATED  
IRON BARS - ALL SHAPES - STEEL BARS for CONCRETE  
"FERROCRETE" CEMENT - WHITE PORTLAND CEMENT  
WHITE GLAZED TILES - NATIVE PORTLAND CEMENT  
SOLIGNUM - PAINTS and OILS - WHITING  
PIPES and FITTINGS - ETC.

**HOES and BILL HOOKS BRAND WILSON**  
IMPORTED MULE SHOE IRON BRAND WILSON

**IMPORTATION COMMISSION TERMS**

"BOND" TEA  
GORDON'S GIN and COCKTAILS  
WHISKY "JOHNNIE WALKER"  
DOMESTIC CHINAWARE & SANITARYWARE  
CREOLINE "PEARSON"  
SUPPLIES FOR RAILROADS & TRAMWAYS  
ALL CLASSES of COAL and FOUNDRY COKE

**IMPORTED CEMENT WILSON LABEL**  
AXES and BRITISH SPECIAL STEELS WILSON BRAND

PIG IRON - NATIVE and IMPORTED -  
PLUMBAGO and CRUCIBLES "MORGAN"  
FIREBRICKS and FIRECLAY  
COPPER - STRIPTIN - BRASS  
"ALLEN'S" SPECIAL TOOL STEEL  
HIGH SPEED DRILLS - TIPPED TOOLS

STEPHEN'S INKS - PENS, ETC.  
POWDER & ROLL SULPHUR.  
ARSENIC "GAFANOTO"

BRASILIAN SALT (MOSSORO) (ALL TYPES)  
SPECIAL QUALITIES FOR PACKING HOUSES and DAIRIES.

**YARROW & CO. LTD - GLASGOW - NAVAL CONTRACTORS**  
BUILDERS OF DESTROYERS - GUN BOATS - MARINE BOILERS - ETC.,  
SPECIALISTS IN THE CONSTRUCTION OF SHALLOW DRAFT VESSELS.

**ENQUIRIES SOLICITED FOR THE DIRECT IMPORTATION OF ANY ARTICLE INTO BRAZIL**

have granted the same privilege to Brazilian Fruits.

7) Eggs (or ovum) of the Silk-worm.

8) Quantities of Silkworms under the authority of the Ministry of Agriculture.

9) Animals for Breeding imported by Breeders, under the authority of the Ministry of Agriculture.

10) Parts, imported by Shipbuilders for the purpose of Shipbuilding.

11) All material to be employed for extraction and treatment of Minerals.

12) Machinery, etc. necessary for the preparation of Timber and Electrical Installations to mount or erect chemical Laboratories designed for the manufacture of cellulose employing vegetables grown in the Country.

13) Machinery etc., for the purpose of pri-

on each side, calendered or super-calendered or the like, smooth satin or couche destined for printing purposes — under certain conditions.

18) Airships, assembled or otherwise — and their respective parts, Gasoline, oils, etc. destined for Aereal Navigation, imported by Companies or Firms that have a concession to exploit an Aereal Service in Brazil, and that such Company or Firm promise to give an abatement of 50% of the ordinary Passage rate to any functionality of the Government whilst on Duty, by request of the respective Ministry in which they are employed.

19) Medicines, and medical objects imported by Establishments of Charity or Hospitals destined exclusively to the gratuitous treatment of their patients.

20) Machines and prime (raw) materials, for

the manufacture of nets, and other necessary material for the purpose of Fishing and other aquatic services, including lubricants and combustibles under certain conditions.

21) Horticultural Seeds for meadow, orchards and, general sewing in Agriculture, except for Garden use.

22) Materials destined for Nautical and Ground sports for the exclusive use of members or associates of Amateur Sport Societies affiliated to Leagues of Federations, recognised by the Brazilian Federation of Sports.

23) Small Vessels, assembled, (mounted) or otherwise, with sails, oil or Steam, for navigation, either coasting or on long voyage. Also those to be employed in works of sanitation, and those to be used as rescuing ships within or outside any port besides all vessels for fishing services and all others exceeding 200 tonnage.

#### Chap. IV

Reductions of Import Duties on Goods for consumption will be granted:

§ 1: by paying 10% of the total duty on:

1) Materials Machines and supplies to be used for the Manufacture of sugar and for the improvement of sugar-factories when imported by Agriculturists or Agricultural Companies, as follows:

—a) frame works or iron-frames and articles relating thereto.

—b) All material for Electrical or Gas illuminations.

—c) tubes of iron for the conduction of water, Gas, or Vapour, and their respective valves or registers.

—d) tools, forges and other portable utensils of trade.

—e) Machines and transmission apparatus for the manufacture of Sugar, distillation of brandy and alcohol.

—f) Leather belts for machinery rubber cushions, or asbestos, ropes of linen, Cotton or tow for the apparatus of transmission.

—g) Rails (portable and fixed) and wagons for the carrying of provisions, locomotives, pruners, coasting boats, vessels of wood or Iron.

—h) Refractory bricks proper for the construction of steam-boiler furnaces.

—i) Scales, or Balances to weigh sugarcanes, and iron-tanks for Depositories.

2) — Machinery, apparatus, etc. necessary for the refining of Rubber in bulk and also those imported for the manufacture of rubber goods, or articles of whatever kind; including chemical substances and other necessities to manufacture same.

3) Materials imported for use in planting, cultivating, and benefitting rubber, caucho or balata, under certain conditions.

§ 2°) By paying 20% of total duties on:

—1) Rolling stock for traction or transportation purposes, including accessories or supplies, to be used for construction, maintenance or exploitation of cargoes, baggages or passenger transportation services, on common Railways or city transit services, catered for directly by States, Federal Districts or Municipalities or by companies appointed by them.

Rolling-Stock to be considered as: — Locomotives, and their respective tenders, motor wagons or tractors, passenger-carriers, trams, and their trailer cars, steel wagons and any other vehicles for traffic on rails, as well as the necessary accessories thereto.

The parts, or conjunction of parts manufactured as well as materials that are or would be indispensable for the construction and preservation or upkeep of such vehicles.

§ 3°) Paying 50% of the total Duties.

—1) The Materials and Machinery imported for the work, exploration and use in public Services, whilst providing water, filtering and purifying same. Drains, Light, Power, Gas, transport, shelters, telegraphs, telephones, Radio-telephones, Radio-Telegraphs, executed directly by States, Federal District, and Municipalities or by Companies or Firms, appointed by them.

—2) Asphalt imported by States, Municipalities or Federal District for the pavement of Streets, public places, or for construction of roads, under certain conditions.

## DEN NORSKE SYD - AMERIKA LINJE

(The Norwegian South America Line)

Regular Service to Denmark, Finland, Norway, Baltic, River Plate & vice-versa with 8 fast going modern diesel motor liners.

### NEXT SAILINGS

#### FOR RIVER PLATE

m/s "CRUX" - 1st of May

m/s "BRA-KAR" 14th of May

For further particulars apply to



### NEXT SAILINGS

#### NORWAY & BALTIC

FOR FINLAND, DENMARK,

m/s "BORGLAND" 18th of April

FREDRIK ENGELHART & CIA. — RUA S. PEDRO N. 9 — RIO JANEIRO  
ALEX S. GRIEG & CIA. — PRAÇA DA REPUBLICA, 51 — SANTOS

# American Republics Line

OPERATED BY

C. H. SPRAGUE & SON, Inc.

BOSTON, Mass.

for the

## United States Shipping Board

Regular Cargo Steamers Service

between

THE ATLANTIC COAST

PORTS of the United States,

BRAZIL and the RIVER PLATE

General Agents for Brazil

### American Steamship Agencies Co. Inc.

Rua 15 de Novembro, 176 || Rua da Quitanda, 202

Santos

Rio de Janeiro

Cable Address: "Amagencies"

# DELTA LINE

"Floating Bungalows"

Owned and Operated by

## Mississippi Shipping Co. Inc.

RIO to NEW ORLEANS in 18 days  
WITH ONE STOP AT VICTORIA

Passengers — Mail — Freight

NEXT SAILINGS:

Southbound

"DELSUD" May 2, 1934

"DELVALLE" May 23, 1934

Northbound

"DELNORTE" Apr. 21, 1934

"DELMUNDO" May 12, 1934

For further particulars apply to

### American Steamship Agencies Co. Inc.

Rua da Quitanda, 202 || Rua 15 de Novembro, 176

RIO DE JANEIRO

SANTOS

Or at our General Passenger Agents

Serviço Int. de Viagens G. BERNSTORFF

—3) Lynotypes, Monotypes and other machines for printing-composition and typographical printing in general imported by journalistic firms for the use of their productions.

§ 4°) By paying 70% of total duties.

Material, Machines apparatus and vehicles to be used exclusively as material or parts for the construction of markets and factories dealing with meats and their by-products when imported by associations or companies constituted by Breeders and other rural proprietors with scope of manufacturing or dealing in meats and their by-products.

Paper for printing that does not contain in all its length or breadth the name of the Journal that it is destined for, but with water lines (verge) of 0,m05/0,m05, will pay as Import duties a tax of \$080 per kilo, (paper) (razão 10%) observing requirements of chap. XVII.

Preparations from Sulphur, Sulphates and other such properties used for destruction of carapates, ants and insects detrimental to plantations, farms, orchards, etc., recognized so by the Ministry of Agriculture, will pay import duties in the proportion of \$160, paper, per kilo, (razão 10%) in accordance with circular to be issued by the Ministry of Finance.

This benefit is only conceded to "compound products" that have a finality established in this article, not being granted to Chemical Products that besides serving as the base or principal element or that are employed separately for that purpose may be used for any other application.

Wire up to 6 milimeters of maximum diameter and 4 milimeters (minimum) destined to circle farms and cattle fields, when imported by agriculturists, breeders or associations duly registered in the Ministry of Agriculture, to pay a tax of \$160, paper per kilo. (razão 10%).

Wire exclusively for Harvesting and binding purposes, when imported by agriculturists duly registered in the Ministry of Agriculture to pay a tax of \$320, paper, per kilo, (razão 10%).

Special paper, as well as paper bags, with round, triangular or rectangular perforations with 15 milimeters or more, of diameter or base, with a space of 10 centimeters, or less between perforations, suitable for packing National Fruits, imported direct by Syndicates of Fruiterers, and by National Fruit Exporters provided they respond to the dimensions and wording established by the Ministry of Agriculture and confirmed with circular issued by the Ministry of Finance to pay a tax of \$800 paper, per kilo, (razão 50%).

*to be continued*

Firms desirous of Establishing business relations, or announcing vacancies on their Staff, or other individuals desirous of obtaining Situations, in this or any other Country, are invited to advertise in our Columns.

The widely distributed area covered by the Review and its high Standing are worthy of note.





It may be said that the recent firmness is anticipating to a large extent the effect which the policy of Brazil and the improvement in the world statistical position should produce.

In order to maintain the rise, and perhaps even continue it, some fresh elements of optimism would now be necessary; these will not be difficult to find provided Brazil perseveres without any sign of weakness and without any modification in the energetic conduct of her affairs, which up to now has been the chief cause of the success realised.

Louis DELAMARE

**COTTON**

**COTTON: YARN AND PRICE GOODS  
BRAZILIAN IMPORTS — JANUARY**

Commodities	Killog.		Value-cif in £	
	1933	1934	1933	1934
Yarn . . . . .	105.812	77.496	19.852	15.317
Sewing thread . . . . .	12.260	7.343	9.048	5.312
<b>TOTAL . . . . .</b>	<b>118.072</b>	<b>84.839</b>	<b>28.900</b>	<b>20.629</b>
<b>Piece goods.</b>				
Piece goods bleached	8.817	4.672	4.889	2.277
Piece goods unbleached . . . . .	18	1.329	7	135
Piece goods, printed	3.598	2.757	2.209	674
Piece goods, dyed . . . . .	33.173	25.844	13.077	8.391
Piece goods, unenumerated . . . . .	10.535	12.293	3.807	7.388
<b>TOTAL . . . . .</b>	<b>56.141</b>	<b>46.895</b>	<b>23.989</b>	<b>18.865</b>

**BEVERAGES**

**BRAZILIAN IMPORTS — JANUARY**

Commodities	Killog.		Value-cif in £	
	1933	1934	1933	1934
Mineral waters for the table . . . . .	6.026	—	309	—
Alcoholic and fermented beverages . . . . .	37.554	—	4.995	—
Beer . . . . .	2.293	—	145	—
Liquors and syrupe . . . . .	1.552	489	195	98

Grape juice . . . . .	7.816	426	733	26
Vermouth, bitter, and similar beverage . . . . .	43.890	46.193	3.279	3.591
Champagne and other sparklings wines . . . . .	153	1.910	53	579
Sweet wines (Oporto and similar) . . . . .	43.482	59.102	3.691	4.434
Table wines . . . . .	741.466	365.192	16.208	7.561
Unenumerated . . . . .	1.205	—	87	—
<b>TOTAL . . . . .</b>	<b>885.437</b>	<b>473.312</b>	<b>29.695</b>	<b>16.289</b>

**MOTOR CARS AND MOTOR TRUCKS**

**BRAZILIAN IMPORTS—  
JANUARY, 1934**

(Special for the Wileman's Brazilian Review)

**MOTOR CARS**

**Marks and Destination**

BEDFORD	
Santos . . . . .	4 4
BUICK	
Bahia . . . . .	1
Rio de Janeiro . . . . .	1
Santos . . . . .	3 5
CONTINENTAL	
Santos . . . . .	9 9
DODGE	
Rio de Janeiro . . . . .	1 1

FORD	
Maceió . . . . .	1 1
GRAHAM PAIGE	
Bahia . . . . .	2 2
HILLMAN	
Rio de Janeiro . . . . .	2 2
NASH	
Bahia . . . . .	2
Rio de Janeiro . . . . .	6 8

PONTIAC	
Santos . . . . .	4 4
STUDEBACKER	
Rio de Janeiro . . . . .	14 14
VAUXHALL	
Santos . . . . .	4 4
<b>Total Imports . . . . .</b>	<b>54</b>

**MOTOR TRUCKS**

**AUTOMOBILE**

Santos . . . . .	2 2
Santos . . . . .	16 16

CHEVROLET	
Pará . . . . .	8
Maranhão . . . . .	2
Fortaleza . . . . .	3
Cabedello . . . . .	10
Recife . . . . .	8
Bahia . . . . .	12
Santos . . . . .	132 180

FORD	
Pará . . . . .	20
Rio de Janeiro . . . . .	10
Santos . . . . .	2 32

HILLMAN	
Rio de Janeiro . . . . .	14
Santos . . . . .	5 19

INTERNATIONAL	
Santos . . . . .	5 5

OPEL	
Santos . . . . .	16 16

VOLVO	
Rio de Janeiro . . . . .	4 4

<b>Total Imports . . . . .</b>	<b>274</b>
--------------------------------	------------

**SÃO PAULO RAILWAY**

**The Main Artery of the State of São Paulo**

**F**REQUENT Passenger Services between São Paulo and Santos and the Interior of the State.  
Rapid, Reliable, Freight Services.  
Door to Door Collection and Delivery of Baggage, Parcels and Merchandise.

CONSIGN YOUR GOODS "S. P. R."

Information:—

S. P. R. Estação da Luz - Caixa "C"

São Paulo

## THE LEOPOLDINA RAILWAY COMPANY

## Estimated Weekly Traffic Receipts

YEAR	WEEK ENDED	RECEIPTS FOR WEEK			TOTAL FROM 1ST JANUARY
		Currency	Exchange	Sterling	
1934	7th. April	1,458,000\$	4.1782d.	£24,490	£ 327,848
1933	8 "	926,000\$	5.17764d.	£20,317	£ 355,189
Increase..	× ×	532,000\$		£ 4,173	£
Decrease..	× ×		1.15764d.	£	£ 27,341

## SÃO PAULO RAILWAY COMPANY

## Estimated Weekly Traffic Receipts

YEAR	Week ended	RECEIPTS FOR WEEK			TOTAL TO DATE
		Currency	Exchange	Sterling	
1933	March 26th	1,810,568\$760	436646 or 5d. 33(128	29,665-3- 7	482,349-15- 4
1934	March 25th	1,710,000\$000	598592 or 4d. 1(22	28,695-2- 6	364,776- 1- 1
Increase					
Decrease		100,568\$760	1d.29(128	10,970-1- 1	117,573-14-3

## PAPER MONEY IN CIRCULATION

Paper Money in circulation in Brazil on 31st March 1934 amounted to 3,061,654,214\$ discriminated as follows:

Nº of Notes	United Value	Total in circulation
Bank of Brazil Issue ..	—	592,000:000\$000
2,925,360 .. . . . .	1\$000	2,925:360\$000
1,601,382 .. . . . .	2\$000	3,202:764\$000
7,265,467 .. . . . .	5\$000	36,327:335\$000
5,973,347 ½ .. . . .	10\$000	59,733:475\$000
4,712,599 .. . . . .	20\$000	94,251:980\$000
3,268,971 .. . . . .	50\$000	163,448:550\$000
3,272,709 ½ .. . . .	100\$000	327,270:950\$000
1,817,372 ½ .. . . .	200\$000	363,474:300\$000
2,532,039 .. . . . .	500\$000	1,266,019:500\$000
153,000 .. . . . .	1:000\$000	153,000:000\$000
33,522,246 ½ .. . . .	—	3,061,654:214\$000

## Money Market

April 9th 1934

Date	N. York	90 d/s	Sight	Dollars
April 2nd	Holiday in London	59\$592	60\$000	11\$710
"	Afternoon rate	59\$592	60\$000	11\$650
" 3rd	5.13-7/8	59\$592	60\$000	11\$670
" 4th	5.18-1/8	59\$592	60\$000	11\$580
" 5th	5.16-1/8	59\$592	60\$000	11\$620

" 6th	5.15-1/2	59\$592	60\$000	11\$640
" 7th	5.16-7/8	59\$592	60\$000	11\$640

The above are opening rates on London. Agios in the Semi Official market continued firm; premium on Sterling was quoted at 12\$600 to 13\$000 and dollars 2\$800 to 2\$900.



## THE ROYAL BANK OF CANADA

(INC. 1869)

AUTHORISED CAPITAL .....	\$50,000,000 <sup>00</sup>
REALISED CAPITAL .....	\$35,000,000 <sup>00</sup>
RESERVE FUND .....	\$20,000,000 <sup>00</sup>

BALANCE SHEET OF THE S. PAULO BRANCH  
31st MARCH, 1934

## ASSETS

Bills Discounted .....	10,257:822\$300
Bills Receivable our own account .....	3,387:833\$800
Foreign Collections .. 24,129:600\$000	
Domestic Collections .. 10,512:583\$870	34,642:183\$870
Current Loans .....	47,101:301\$814
Securities in safe custody .. 57,096:258\$000	
Securities in Guarantee .. 51,040:017\$599	108,136:275\$599
Branches .....	2,184:511\$293
Local Correspondents .....	641:296\$724
Foreign Correspondents .....	999:006\$400
Sundry accounts .....	13,278:712\$925
CASH	
In national currency in deposit with Banco do Brazil and other Banks ..	19,667:323\$593
Government and other Securities .....	4,173:675\$935
Rs.....	244,469:944\$255

## LIABILITIES

Time Deposits .....	3,153:353\$006
Deposits in current account .....	60,556:682\$884
Sundry accounts .....	16,776:386\$711
Securities as per contra .....	108,136:275\$599
Due to Head Office .....	1,466:540\$000
Branches .....	18,133:324\$270
Bills for collection .....	34,642:183\$870
Local correspondents .....	363:291\$216
Foreign correspondents .....	1,241:906\$700
Rs.....	244,469:944\$255

São Paulo, 4th, April, 1934.

- a) A. Bain Mackie, Joint-manager.  
a) J. M. C. Aranha, pro-accountant.

BANK OF BRAZIL  
REDISCOUNT DEPARTMENT

Balance Sheet as at 7th April, 1934

## ASSETS

Securities rediscounted .....	103,843:463\$240
General Expenses .....	587\$600
	103,844:050\$840

## LIABILITIES

Bank of Brazil: Current account ..	2,563:120\$840
National Treasury .....	100,000:000\$000
Reserve Fund .....	517:849\$330
Rediscounts .....	763:080\$670
	103,844:050\$840

# Banco Alemão Transatlantico

DEUTSCHE UEBERSEEISCHE BANK

Balance Sheet for 31st March, 1934

BRANCHES IN RIO DE JANEIRO, SÃO PAULO, SANTOS, CURITYBA, BAHIA AND PORTO ALEGRE

**ASSETS:**

**LIABILITIES:**

Bills discounted .....	67.400:118\$689	
Bills receivable: Foreign .....	40.483:693\$566	
Ditto, domestic .....	70.407:374\$891	
Loans in current account .....	62.703:940\$433	
Collateral deposited as security .....	51.424:488\$050	
Securities deposited .....	180.146:446\$228	
Head Office .....	4.835:503\$180	
Branches and agencies abroad .....	1.116:703\$533	
Ditto in Brasil .....	21.376:631\$157	
Correspondents abroad .....	14.986:476\$211	
Ditto in Brasil .....	3.047:769\$398	
Securities owned by bank .....	1.892:938\$000	
Mortgages .....	4.879:019\$170	
Bank bullings: .....	10.000:000\$000	
Cash: In currency .....	18.390:265\$830	
In gold coin .....	132:884\$400	
In other specie .....	25:048\$263	
In Bank of Brasil .....	27.854:297\$540	
at bankers .....	6.390:513\$402	52.793:009\$435
Sundry accounts .....	29.068:926\$525	
	Rs. 616.563:038\$466	

Capital .....	14.000:000\$000
Fund intended to increase capital in Brasil .....	11.000:000\$000
Deposits in current account with interest .....	75.461:695\$559
Ditto without interest .....	28.335:833\$221
Ditto at fixed dates .....	51.385:921\$765
Ditto against collections abroad .....	40.483:693\$566
Ditto against collections in Brasil .....	70.407:374\$891
Securities deposited and in guarantee .....	231.570:934\$278
Head Office .....	10.825:664\$205
Branches and agencies abroad .....	1.231:725\$417
Ditto in Brasil .....	23.140:443\$621
Correspondents abroad .....	17.520:723\$490
Ditto in Brasil .....	656:689\$994
Mortgages .....	4.879:019\$170
Bills payable .....	4.047:094\$310
Sundry accounts .....	31.556:224\$979
	Rs. 616.563:038\$466

S. E. & O. — H. Sthamer W. Schmitt.

## Banco do Commercio e Industria de São Paulo

REALIZED CAPITAL .....	60.000:000\$000
RESERVES FUND .....	60.000:000\$000
OTHER RESERVES .....	5.218:291\$917

BALANCE SHEET AS AT 31ST MARCH, 1934  
Head office and Branches

**Assets**

**Liabilities**

Bills discounted .....	176.919:209\$300	
Bills receivable:—		
Domestic and Foreign .....	47.442:759\$674	224.361:968\$974
Loans in current c/c & advances .....		125.819:180\$349
Collateral deposited as security .....	159.936:356\$878	
Securities deposited .....	255.057:479\$890	
Directors deposits .....	200:000\$000	415.193:836\$768
Securities owned by Bank .....	13.772:506\$330	
Real State .....	28.865:457\$022	42.637:963\$352
Branches .....	100.164:219\$654	
Sundry accounts .....	4.041:185\$984	
Correspondents in Brazil and abroad .....	11.271:368\$140	
Cash: In Currency in bank and at Banco do Brazil & other banks .....	60.069:376\$619	
Total Rs. ....	983.559:099\$840	

Capital .....	60.000:000\$000	
Reserve Fund .....	60.000:000\$000	
Real State depreciation fund .....	2.492:406\$640	
Profits and Loss account .....	2.725:885\$277	
Deposits at fixed dates .....	34.312:907\$980	
Ditto, in c/a with interest .....	231.081:292\$866	
Ditto, without interest .....	11.994:257\$957	277.388:458\$803
Collateral deposited as security .....	159.936:356\$878	
Securities deposited .....	255.057:479\$890	
Directors deposits .....	200:000\$000	415.193:836\$768
Bills for collection .....	47.442:759\$674	
Branches .....	105.000:624\$761	
Sundry accounts .....	5.712:565\$592	
Cheques and orders for payment .....	3.797:111\$980	
Correspondents in Brazil and abroad .....	3.642:631\$345	
Unclaimed dividends .....	72:819\$000	
Total Rs. ....	983.559:099\$840	

E. & O. E. — São Paulo, 7th April, 1934 — Banco do Commercio e Industria de São Paulo. — Numa de Oliveira, Director-President. — A. Palmieri, Director-Superintendent. — Ernesto Ramos — Paulo C. Galvão, Directors-Managers — G. M. Pinto, Accountant.

## THE RIO MONEY MARKET

Exchange rates sight Rio on:	Mar. 31 1934	April 7 1934	April 7 1933
London (per) . . . . .	59\$592 60\$000	59\$592 60\$000	45\$443 45\$850
Paris . . . . .	— \$775	— \$775	— \$540
Italy . . . . .	— 1\$030	— 1\$020	— \$700
Belgium (gold) . . . . .	— 2\$753	— 2\$745	— 1\$910
Portugal . . . . .	— \$552	— \$552	— \$432
New York . . . . .	11\$710	11\$640	13\$300
Buenos Aires (paper) . . . . .	— 3\$540	— 3\$535	— 3\$515
Sweden . . . . .	— —	— —	— —
Japan . . . . .	— 3\$690	— 3\$700	— 3\$110
Spain . . . . .	— 1\$610	— 1\$600	— 1\$165
Switzerland . . . . .	— 3\$815	— 3\$800	— 2\$645
Hamburg (Reichmark) . . . . .	— 4\$690	— 4\$660	— 3\$235
Montevideo . . . . .	— 6\$600	— 6\$600	— 6\$500
Holland . . . . .	— 7\$970	— 7\$947	— 5\$535
Value of sovereign, buyers . . . . .	— 115\$000	— 115\$000	— 104\$000
Discount Bank of England . . . . .	— 2%	— 2%	— 2%
Do Bank-France . . . . .	— 3%	— 3%	— 2½%
Do Bank-Spain . . . . .	— 6%	— 6%	— 6%
Do Bank-Italy . . . . .	— 3%	— 3%	— 4%
Do Bank-Germany . . . . .	— 4%	— 4%	— 4%
Do London Market . . . . .	— 31/32%	— 15/16%	— 31/32%
Do New York Market . . . . .	— 1/8%	— 1/8%	— 1¼%

## THE STOCK MARKET

## The Stock Market

## London

	1934 Mar. 31	1934 April 7	1933 April 7
Brazil Funding 1893 5% . . . . .	Holiday	89.10.0	90.0.0
Ditto, 1914 new . . . . .	"	73.10.0	69.10.0
Conversion, 1910. 4% . . . . .	"	17.10.0	20.10.0
Ditto, 1908. 5% . . . . .	"	—	—
Federal District 5% . . . . .	"	28.0.0	34.0.0
Anglo-South Am. Bk. Ltd. ord. . . . .	"	0.6.3	0.8.6
Brazil Traction, ord. . . . .	"	11.25	9.62
Great Western of Brazil Ry. Co. ord. . . . .	"	—	—
Lampport & Holt Ltd. 6% Comm. Pref. . . . .	"	—	—
S. Paulo Coffee Estates Co. Ltd. 7% . . . . .	"	89.5.0	74.10.0
Cables Wireless Teleg. Co., Ltd. . . . .	"	10.0.0	10.15.0
Western Telegraph Co. Ltd., 4% Deb. Stock Red. . . . .	"	101.0.0	98.0.0
Brazilian Warrant Agency & Finance Co., Ltd., ord. . . . .	"	0.2.3	0.1.3
Rio de Jan. City Imp. Co. Ltd., ord. . . . .	"	0.14.6	1.0.0
Imperial Chemical Ind. Ltd. . . . .	"	1.17.1½	1.5.6
S. Paulo Railway . . . . .	"	79.0.0	89.0.0
Leopoldina Ry. 6.1 2% Term, Deb. 1933 . . . . .	"	80.0.0	76.0.0
Rio de Janeiro Flour Mills . . . . .	"	1.18.3	1.16.0
Bank of London & South America . . . . .	"	4.15.0	4.0.0
Royal Mail . . . . .	"	2.10.0	3.0.0
British War Loan 3½% 1927-47 . . . . .	"	104.5.0	101.10.0
Consols 2½% . . . . .	"	80.12.6	76.5.0

## RIO DE JANEIRO STOCK MARKET QUOTATIONS (OFFERS) AT THE

## RIO STOCK EXCHANGE

on Saturday 7th April, 1934

Uniformisadas 5 % . . . . .	840\$	835\$
Ferrovias Rail-way Bonds . . . . .	1:020\$	1:018\$
Sundry issues, bearer . . . . .	838\$	837\$
Ditto to nom . . . . .	840\$	837\$
Treasury Obligation (1921) . . . . .	—	1:000\$
Ditto, 1932 . . . . .	1:005\$	1:000\$
Ditto, 1930 . . . . .	—	1:015\$
Rodovias . . . . .	970\$	—
Tratado da Bolivia 3% . . . . .	—	650\$
Ditto, to bearer . . . . .	—	—
State of Rio 100\$000, bearer . . . . .	107\$	105\$5
Ditto, dec. 3.216 . . . . .	1:000\$	960\$
Ditto 500\$ 8% . . . . .	465\$	455\$
Ditto 500\$ 6% . . . . .	—	—
M. Geras 9% obligations . . . . .	1:008\$	1:005\$
Ditto, 7% nom. . . . .	890\$	870\$
Ditto, 7% bearer . . . . .	—	880\$
Ditto, 1:000\$ 5%, nom. . . . .	—	700\$
Ditto, bearer . . . . .	700\$	—
Ditto nom. . . . .	710\$	700\$
Municipal Loan, 6% 1906, bearer . . . . .	164\$	162\$
Ditto, 5%, dec. 1914 . . . . .	159\$	156\$
Ditto nom. . . . .	158\$	—
Ditto 1904., £ 20, nom. . . . .	—	460\$
Ditto, bearer . . . . .	500\$	470\$
Ditto, 6%, 1917 . . . . .	164\$	162\$
Ditto, 6%, 1920 . . . . .	162\$	160\$
Ditto, 1931, bearer . . . . .	197\$	196\$
Ditto dec. 1.535 . . . . .	—	182\$
Ditto dec. 1.550 . . . . .	—	180\$
Ditto dec. 1.622 . . . . .	—	—
Atlantica . . . . .	—	172\$
Ditto, dec. 1.628, 6% . . . . .	—	149\$
Ditto, dec. 1.948, 7% . . . . .	180\$	179\$
Ditto, dec. 3.264 . . . . .	175\$	174\$
Ditto, dec. 2.097, 7% . . . . .	—	179\$
Ditto, dec. 2.093, 8% . . . . .	194\$	193\$
Ditto, dec. 1.933 . . . . .	195\$	194\$

## JOHNSON LINE



FLEET: 15 MOTOR SHIPS

Finland, Poland, Sweden-Brazil, Finland, Poland,  
TOTAL TONNAGE 108,600 TONSRegular Service Between  
Sweden-River Plate, Sweden-Norway-North Pacific,  
and vice-versa.

## Outward Sailings From Sweden:

SUECIA — 27th March.  
PACIFIC — 12th April.

## Sailings for Sweden &amp; Finland:

## From Rio:

VALPARAISO — 26th April.  
PEDRO CHRISTOPHERSEN — 7th MayFor further particulars apply to the Agents: —  
Williams & Co., Pernambuco, Gueudeville & Co.  
Bohnia; Hard Rand & Co., Victoria; Johnson Line  
Agencies, Santos; Wigg Brothers, Rio Grande, and or

## LUIZ CAMPOS FILHOS &amp; CO.

RUA 1.º DE MARÇO, 117 — RIO DE JANEIRO

Ditto, dec. 1.999	180\$	—
Ditto, dec. 2.339, 8%	—	179\$
Espirito Santos 6%	—	665\$
Ditto 8%	850\$	800\$
Petropolis, 4%	—	190\$
Palotas 1:000\$	840\$	—
Porto Alegre, 500 8%	—	—
Dec. 846	435\$	427\$
Alagrette	—	1:000\$
S. Leopoldo 8%	—	1:000\$
Gravatahy 8%	—	1:000\$
Iguassú 100\$	90\$	—
Petropolis (E. do Rio) 1918	200\$	190\$
Campos E. do Rio	—	190\$
Bagé (8 %)	850\$	—
Tresopolis (8%)	185\$	—

**Banks:—**

Brazil	400\$	398\$
Funcionarios	46\$5	45\$5
Portuguez	—	129\$
C. Real de M. Geraes Economico	—	35\$
Mercantil	—	440\$
Commercio	—	128\$
Bóa Vista	545\$	530\$
Regional	—	120\$

**Railways:—**

M. S. Jeronymo	116\$	114\$
Victoria a Minas	10\$	—

**Insurance:—**

Previdente	2:500\$	2:400\$
Varegistas	1:500\$	1:300\$
Argos Fluminense	3:000\$	2:600\$

Garantia	80\$	60\$
Sagres	400\$	300\$
Confiança	—	200\$
Integridade	280\$	240\$
União dos Proprietarios	—	269\$
Continental	—	—
Brazil (70%)	45\$	—
Guanabara	—	70\$

**Textiles:—**

Aliança	96\$	—
Corcovado	—	55\$
America Fabril	—	190\$
Brazil Industrial	450\$	430\$
Esperança	—	180\$
Progresso Industrial	160\$	130\$
Petropolitana	90\$	75\$
Confiança Industrial	—	—
Manufatura	150\$	130\$
Nova America	—	180\$
Tijuca	20\$	10\$
Industrial Mineira	50\$	20\$
Taubaté Industrial	—	510\$
Industrial Campista	30\$	—

**Sundry:**

Hclerith	1:200\$	1:060\$
Docas de Santos, bearer	—	259\$
nom.	253\$	—
Mercado Municipal	250\$	240\$
Terras e Colonizações	—	9\$
Caixa Central de Reservas	180\$	—
Docas da Bahia	—	2\$

Phymatosan	—	300\$
C. Brahma	—	405\$
União Industrial	—	3:010\$
Sul Mineira de Electricidade (ord.)	—	170\$
Sul Mineira de Electricidade (pref.)	—	200\$
Usinas Nacionaes	390\$	—
Caxambu	65\$	60\$
B. Art-factos de Borrachá	—	85\$
Luz Starica	210\$	—
Minas de S. Mathilde	190\$	—
Usina Santa Luzia	385\$	380\$

**Deben ares:—**

Cervejaria Brahma	—	1:040\$
Docas Santos	—	199\$5
Manufatura	200\$	198\$
Mercado Municipal	208\$	206\$
Nova America	—	1:000\$
T. Confiança Industrial	—	75\$
Tec. Progresso Industrial	194\$	185\$
Fluminense F. Club	72\$	65\$
Bellas Artes	—	215\$
Tecidos Corcovado	—	130\$
Tecidos Aliança	145\$	—
Hotels Palace	—	203\$
Industrial Campista Edificadora	—	110\$
Edificadora	—	145\$
Tecidos Magéense	120\$	—
Cotonificio Gavea	210\$	200\$
Santa Helena	—	160\$
Magéense	—	100\$
Brasil Commercial e Imobiliario, 11%	1:020\$	—
Antarctica Paulista	—	193\$

# COFFEE

## COFFEE PRICES CURRENT

RIO DE JANEIRO, 7th, April, 1934

COFFEE SERVICE	2	3	4	5	6	7
Rio spot Coffee N. 7	178200	178200	178000	158700	168000	158000
Rio futures						
April	168375	168300	158775	158300	158300	148500
May	168750	168725	168075	158525	158625	148900
June	168925	168875	168300	158775	158350	158200
July	168800	168725	168100	158375	158475	148950
August	168750	168800	158900	158300	158350	148850
September	168475	168550	158725	158125	158275	148825
Sales	12.000	10.500	5.500	21.000	4.500	13.500
Santos spot N. 4	188000	178900	178700	178700	178500	178400
Santos futures						
April	198700	198750	198475	198350	198275	198275
May	198600	198600	198375	198325	198300	198300
June	198600	198600	198475	198475	198300	198300
July	198650	198650	198475	198475	198000	198000
August	198575	198525	198500	198500	188975	188975
September	198700	198675	198475	198475	188925	188925
Sales	1.500	1.000	nil	nil	1.000	nil
New York Rio spot N. 6	10 7/8	10 7/8	11	10 1/2	10 1/2	10 1/2
" Rio " " 7	10 5/8	10 5/8	10 3/4	10 1/4	10 1/4	10 1/4
" Santos " " 4	11 1/4	11 1/2	11 1/2	11 1/4	11 1/4	11 1/4
" Santos " " 7	10 7/8	11 1/8	11 1/8	10 7/8	10 7/8	10 7/8
" futures						
May	8.50	8.46	8.51	8.36	8.30	8.21
July	8.65	8.58	8.64	8.49	8.42	8.35
September	8.74	8.66	8.70	8.57	8.45	8.41
December	8.83	8.74	8.77	8.64	8.56	8.55
Sales	5.000	5.000	5.000	5.000	5.000	5.000
Havre futures						
May	Holiday	175 1/2	172 1/2	170	168 1/4	167 1/4
July	"	173 1/2	170 1/2	169	167 1/2	166 3/4
September	"	172 3/4	170 1/2	168 3/4	167 1/4	166 1/4
December	"	172	170 3/4	168 1/2	167 1/2	166 1/4
Sales	"	3.000	1.000	2.000	3.000	3.000
Hamburg futures						
May	"	32	32 1/2	32 3/4	32 1/2	32 1/2
July	"	33	33 1/4	33 1/2	34	33 1/2
September	"	34 1/4	34	34 1/4	34 1/4	34 1/4
December	"	34 3/4	35	35 1/4	35 1/4	35
Sales	"	nil	nil	nil	nil	nil

## COFFEE QUOTATIONS

RIO DE JANEIRO, 7th April 1934

Spot	Rio		— New York —			
	7s	Santos 4s	Rio 7s	Santos 4s	7s	
Mar. 31-1934 . . .	17\$200	17\$900	10.5/8	11.1/4c	10.7/8	
April 7-1934 . . .	15\$000	17\$000	10.1/4c	11.1/4c	10.7/8c	
Rise or fall . . .	-2\$200	-\$500	-0.3/8c	—	—	
Options:— — Rio Contract A — Santos Contract A —						
	May	July	Sept.	May	July	Sept.
Mar. 31-1934	8.50c	8.65c	8.74c	10.82c	11.01c	11.33c
Apr. 7-1934	8.21c	8.35c	8.44c	10.45c	10.62c	10.94c
Rise or fall	-0.29c	-0.30c	-0.30c	-0.37c	-0.39c	-0.39c

Saturday 31st March being holiday in New York, we took quotations for 2nd April.

## COFFEE MARKET

Conditions generally ruled low both in Rio & Santos during the week ending April 7th.

North-American quotations showed a marked tendency down-ward, contributing particularly to the lack of activity here.

Sales in the U. S. A. were nevertheless on a normal basis.

Type 7, Rio, quoting 17\$200 per 10 kilos at closing time March 31st, fell to 15\$000 on April 7th.

Exporters do not seem particularly interested in buying now and sellers on the other hand consider present offers still below their selling price.

The stock at present in Santos runs up to over 2,300,000 bags making trade difficult.

It seems that the local "Centro dos Comissarios de Café" will ask for measures to reduce entries to Santos until normal stock conditions prevail.

Term sales were rather active throughout the week.

## COFFEE STATISTICS

## ENTRIES

Week ending April, 7, 1934 — In bags of 60 kilos

	FOR THE WEEK ENDED		FOR THE CROP
	April, 7 1934	Mar. 31 1934	April, 7 1934
<b>RIO:</b>			
By Central and Local			
Warehouses . . . . .	56,085	42,871	2,331,817
<b>TOTAL</b> . . . . .	62,493	48,048	2,690,993
<b>Total - Santos</b> . . . . .	269,077	167,680	9,704,824
<b>TOTAL Rio &amp; Santos</b>	331,570	215,728	12,395,817

The total entries by different S. Paulo Railways for the crop to April, 7, 1934.

Past Jundiaby Sorocabana Total at Total at  
Per and others S. Paulo Santos

1933/1934 . . . 7,242,583 2,671,676 9,914,259 9,704,824

## COFFEE LOADED (EMBARQUES)

Week ending April, 7, 1934 — In bags of 60 kilos

	DURING WEEK ENDED		FOR THE CROP
	April, 7 1934	Mar. 31 1934	April, 7 1934
Rio . . . . .	49,803	29,406	2,432,206
Santos . . . . .	96,574	210,670	9,116,714
<b>Total - Rio &amp; Santos</b>	146,377	240,076	11,548,920

## SALES OF COFFEE (DECLARED)

Week ending April, 7, 1934 — In bags of 60 kilos

	DURING WEEK ENDED		FOR THE CROP
	April, 7 1934	Mar. 31 1934	April, 7 1934
Rio . . . . .	13,673	16,976	1,133,416
Santos . . . . .	65,573	30,000	4,454,000
<b>TOTAL - Rio &amp; Santos</b>	52,000	46,976	5,587,416

## VALUE OF COFFEE CLEARED FOR FOREIGN PORTS

Week ending April, 7, 1934 — In bags of 60 kilos

PORTS	April, 7 1934	Mar. 31 1934	April, 7 1934	Mar. 31 1934	CROP TO APRIL, 7, 1934	
	Bags	Bags	£	£	Bags	£
Rio . . . . .	44,858	23,204	70,375	37,597	2,319,539	3,197,575
Santos . . . . .	237,763	64,212	389,745	104,957	8,887,852	13,825,426
<b>Total 1933/1934</b>	<b>282,621</b>	<b>87,416</b>	<b>460,120</b>	<b>142,554</b>	<b>11,207,351</b>	<b>17,023,001</b>

## COFFEE SAILED

Week ending April, 7, 1934 — In bags of 60 kilos

PORTS	United States	Europe & Mediterranean	Coast	River Plate	Cape	Others ports	TOTAL FOR WEEK	CROP TO DATE
Rio . . . . .	11,453	28,028	1,115	4,877	—	—	45,473	2,388,951
Santos . . . . .	130,282	106,999	5,000	457	25	—	242,763	8,923,215
<b>TOTAL</b>	<b>141,735</b>	<b>135,027</b>	<b>6,115</b>	<b>5,334</b>	<b>25</b>	<b>—</b>	<b>288,237</b>	<b>11,312,166</b>

**OUR OWN STOCK**

In bags of 60 kilos

RIO STOCK on Mar. 31, 1934 .....	702.250	
Entries during week ended April, 7, 1934 .....	62.493	
	764.743	
Loaded (Embarques) for week ended April, 7, 1934 .....	49.803	
Local consumption week ended April, 7, 1934 .....	3.500	
<b>STOCK AT RIO on April, 7, 1934 ..</b>		<b>713.781</b>
SANTOS STOCK on Mar. 31, 1934 .....	2.208.419	
Entries for week ended April, 7, 1934 .....	269.077	
	2.477.496	
Loaded (Embarques) during for week ended April, 7, 1934 .....	96.574	
<b>STOCK AT SANTOS on April, 7, 1934 ..</b>		<b>2.380.522</b>
<b>STOCK AT RIO AND SANTOS on April, 7, 1934 ..</b>		<b>3.094.703</b>
<b>STOCK AT RIO AND SANTOS on Mar, 31, 1934 .....</b>		<b>2.910.669</b>

NOTE -- From the stock of Rio have been deducted 297 bags by the D. N. C. In ditto stock were included 2.626 bags, premium of 10% to shippers. In ditto stock were included 12 bags, coffee returned.



**NORDDEUTSCHER LLOYD BREMEN**

Next sailings for **BAHIA — MADEIRA — LISBON — VIGO — BOULOGNE s/m and BREMEN**

**SIERRA NEVADA** . . . . . 2 May 1934  
**MADRID** . . . . . 24 May 1934  
**SIERRA SALVADA** . . . . . 13 June 1934

For Freight and other particulars apply to the **General Agents**  
**HERM. STOLTZ & Co. — Avenida Rio Branco, 66/74**  
**Telegram "Nordloyd" Caixa Postal 200**  
**Tel. 4-6121**

**COFFEE**

Bahia Stock on 31st March 1934 .....	*22.796
Receipts during week ended April 7th ..	1.288
Available .....	24.084
Clearances during the weeks:	
to U. S. ....	7.600
to Europe .....	
to Elsewhere .....	145
	8.045
Bahia Stock 7th April 1934 .....	16.039

\* recounted

**THE COMMERCIAL TELEGRAM BUREAUX**

Supply Official Reports and Quotations of all the leading American, European, Brazilian and Indian Markets to the Cotton, Coffee, Grain, Produce, Provision, Petroleum and Sugar Trades of Europe and America: also re-transmit Private Despatches by Cable to multiple addresses in Europe and North and South America.



Subscribers furnished with Intermediate or Closing American Reports at night by special arrangements with London, Liverpool, or Amsterdam offices.

FOR TERMS &c., APPLY TO CHIEF OFFICE:

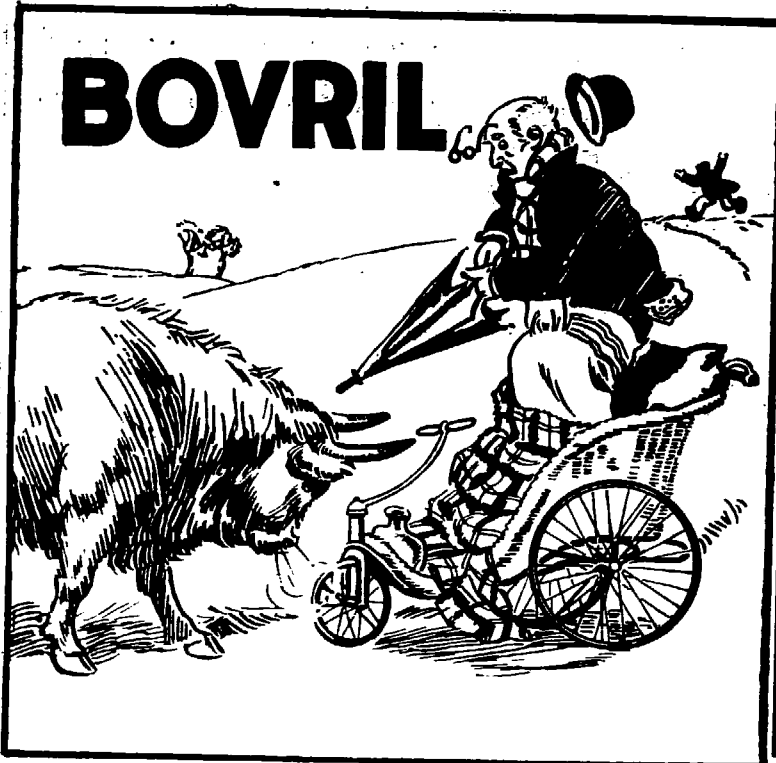
**COMTELBURO, Limited, 11, Tokenhouse Yard, London E. C. 2** (open day an night)

Registered Telegraphic Address: "COMTELBURO"

Telephs London Metropolitan 8244 (4 lines)

LONDON: 30 Mincing Lane, E. C. 3. Telephones  
 LIVERPOOL: 7, Rumbold Str. 1983 Centr. (two)  
 NEW YORK: 66/70 Beaver Street, Hanover 2-4450  
 AMSTERDAM: Spuistraat 4-3268Z.  
 HAVRE: Rua Victor Hugo, 136  
 ANTWERP: Rue des Douze Mois, 19, 11852  
 PARÁ: Avenida Castilhos França, 71, Caixa Postal 2  
 OEARÁ: Rua Major Facundo 680; Caixa Postal 198.  
 PERNAMBUCO: Rua Visc. Itaparica, 207, Caixa 299

BAHIA: Rua Portugal, 16, Caixa 203  
 VICTORIA: Rua 1.º de Março, 46; Sala 8, C. Postal 40.  
 RIO DE JANEIRO: Av. R. Branco, 33-1.º, C. 266  
 SANTOS: Rua Cidade de Toledo, 7, Caixa 243  
 S. PAULO: R. 3 de Dezembro, 48, 1.º. Caixa 1281.  
 CURITYBA: Av. João Pessoa, 71; 2.º and., C. Postal 79  
 RIO GRANDE: Rua Riachuelo, 199; Caixa Postal 92  
 PORTO ALEGRE: R. Siqueira Campos, 903; C. P. 500  
 B. AIRES: Bolsa de Comercio, 239, tel. U. T. 3-2340.



**Card space**

an advertisement here will only cost 20\$000  
and will give you good result.

<b>MANIFESTS OF COFFEE</b>	
<b>RIO DE JANEIRO</b>	
MARCH, 24.	
"Algic"	
<b>JACKSONVILLE</b>	
Vivacqua Irmãos S/A .....	2.000
MARCH, 28.	
"Belvedere"	
<b>GENA</b>	
Pinto, Lopes & Cia .....	130
Arbuckle & Cia. ....	25
<b>GALATZ</b>	
Cia. Nacional Comercio de	
Café .....	125
<b>NAPLES</b>	
Cia. Nacional Comercio de	
Café .....	26
Souza, Pimentel & Cia. ....	13
<b>Total .....</b>	<b>319</b>
MARCH, 28.	
"Toró"	
<b>BUENOS AIRES</b>	
Cia. Nacional Comercio de	
Café .....	1.035
Vivacqua Irmãos S/A .....	500
<b>ROSARIO</b>	
Cia. Nacional Comercio de	
Café .....	20
<b>Total .....</b>	<b>1.555</b>
MARCH, 29.	
"General Artigas"	
<b>HAMBURG</b>	
A. Jabour & Cia. ....	875
Cia. Nacional Comercio de	
Café .....	463
Ornstein & Cia. ....	250
<b>HELSINKI</b>	
A. Jabour & Cia. ....	125
Vivacqua Irmãos S/A .....	125
<b>TURKU</b>	
Castro, Silva & Cia. ....	13
<b>Total .....</b>	<b>1.851</b>
MARCH, 30.	
"Cabedello"	
<b>BUENOS AIRES</b>	
Vivacqua Irmãos S/A .....	1.000

<b>ROSARIO DE SANTA FE'</b>	
Pirheiro, Ladeira & Cia. ....	200
Ornstein & Cia. ....	100
<b>Total .....</b>	<b>1.300</b>
MARCH, 30.	
"Indier"	
<b>ANTWERP</b>	
Theodor Wille & Cia. Ltd. ....	188
E. G. Fontes & Cia. ....	125
Pinto & Cia. ....	125
<b>Total .....</b>	<b>438</b>
MARCH, 30.	
"American Legion"	
<b>BUENOS AIRES</b>	
Vivacqua Irmãos S/A .....	2.000
MARCH, 31.	
"Delvalle"	
<b>NEW ORLEANS</b>	
Rebello, Alves & Cia. ....	875
Botelho, Martins & Cia. Ltd. ....	250
Ornstein & Cia. ....	250
Cia. Nacional Comercio de	
Café .....	125
Pinto, Lopes & Cia. ....	125
<b>HOUSTON</b>	
Cia. Nacional Comercio de	
Café .....	400
<b>Total .....</b>	<b>2.025</b>
MARCH, 31.	
"Jamaique"	
<b>HAVRE</b>	
Leon Israel C.º S/A .....	775
Ornstein & Cia. ....	375
Cia. Nacional Comercio de	
Café .....	25
<b>CASA BLANCA</b>	
Pinto & Cia. ....	300
A. Jabour & Cia. ....	124
José Guarino .....	62
<b>Total .....</b>	<b>1.661</b>
MARCH, 31.	
"Conte Biancamano"	
<b>GENOA</b>	
A. Jabour & Cia. ....	1.000
Luigi Bozzo di Erminio .....	60

<b>TRIPOLI</b>	
Luigi Bozzo di Erminio .....	65
<b>Total .....</b>	<b>1.125</b>
APRIL, 2.	
<b>SAN PEDRO</b>	
Theodor Wille & Cia. Ltd. ....	2.000
<b>S. FRANCISCO DA CALIFORNIA</b>	
Hard, Rand & Cia. ....	2.000
<b>PORTLAND</b>	
Leon Israel C.º S/A .....	625
<b>Total .....</b>	<b>4.625</b>
APRIL, 2.	
"West Nilus"	
<b>S. FRANCISCO DA CALIFORNIA</b>	
Rebello, Alves & Cia. ....	783
Leon Israel C.º S/A .....	300
<b>SAN PEDRO</b>	
Leon Israel C.º S/A .....	945
<b>PORTLAND</b>	
Leon Israel C.º S/A .....	850
<b>VANCOUVER</b>	
Leon Israel C.º S/A .....	425
<b>Total .....</b>	<b>3.303</b>
APRIL, 2.	
"Equator"	
<b>WIBORG</b>	
Mc. Kinlay & Cia. ....	950
A. Jabour & Cia. ....	325
Theodor Wille & Cia. Ltd. ....	125
<b>HELSINGBORG</b>	
Theodor Wille & Cia. Ltd. ....	1.500
A. Jabour & Cia. ....	1.125
Vivacqua Irmãos S/A .....	1.000
Mc. Kinlay & Cia. ....	750
Julio Motta & Cia. ....	175
Pinto, Lopes & Cia. ....	130
Cia. Nacional Comercio de	
Café .....	15
<b>DANTZIG</b>	
Cia. Nacional Comercio de	
Café .....	125
Pinto, Lopes & Cia. ....	80
<b>MANTYLUOTO</b>	
Mc. Kinlay & Cia. ....	125
Castro, Silva & Cia. ....	50





Martins, Gregory & Cia. Ltd.	13	Raphael Sampaio & Cia. ....	50	Naumann, Gepp & Cia. Ltd.	62
B. Gonçalves & Cia. Ltd. ...	13	Soc. Nacional Export. Ltd. ...	13	Cia. Prado Chaves ...	13
<b>GDYNIA</b>		Leon Israel C." S/A ...	13	Pinto & Cia. ....	6
Theodor Wille & Cia. Ltd. ...	3.500	Carlos B. Vasconcellos & Cia.	13	<b>AHUS</b>	
<b>HAMBURG</b>		<b>GEFLE</b>		Theodor Wille & Cia. Ltd. ...	125
Cia. Prado Chaves ...	125	Junqueira, Meirelles & Cia.	1.141	Junqueira, Meirelles & Cia.	52
A. Sion & Cia. ....	84	Theodor Wille & Cia. Ltd. ...	426	<b>KALMAR</b>	
<b>CONSUMPTION</b>		Leon Israel C." S/A ...	375	Hard, Rand & Cia. ....	138
Bunck & Cia. Ltd. ....	3	E. Johnston & Cia. Ltd. ...	63	Theodor Wille & Cia. Ltd. ...	26
<b>CONSUMPTION</b>		Hard, Rand & Cia. ....	13	<b>OSCARSHAMN</b>	
Total ...	10.814	Cia. Prado Chaves ...	13	Junqueira, Meirelles & Cia.	138
<b>MARCH, 24.</b>		Cia. Paulista de Exportação	164	Hard, Rand & Cia. ....	13
<b>"Arlanza"</b>		<b>HELSINGBORG</b>		<b>CARLSKRONA</b>	
<b>SOUTHAMPTON</b>		Hard, Rand & Cia. ....	692	Theodor Wille & Cia. Ltd. ...	151
Naumann, Gepp & Cia. Ltd.	250	Junqueira, Meirelles & Cia.	327	<b>VARBERG</b>	
E. Johnston & Cia. Ltd. ...	5	Soc. Nacional Export. Ltd.	278	Junqueira, Meirelles & Cia.	125
<b>LA CORUNA</b>		Almeida Prado & Cia. ....	189	Lima, Nogueira & Cia. ...	13
Hard, Rand & Cia. ....	5	Cia. Paulista de Exportação	138	<b>SUNDSVALL</b>	
<b>CONSUMPTION</b>		Cia. Prado Chaves ...	13	Theodor Wille & Cia. Ltd. ...	125
Ferreira Menezes & Cia. ...	3	<b>MALMOE</b>		<b>CARLSTAD</b>	
Total ...	263	Almeida Prado & Cia. ....	293	Cia. Prado Chaves ...	125
<b>MARCH, 24.</b>		Cia. Prado Chaves ...	288	<b>NEUFAHRWASSER</b>	
<b>"Western Prince"</b>		<h3 style="text-align:center">Oswaldo Apagão da Silveira</h3> <p style="text-align:center">Official Exchange &amp; Share Broker</p> <hr/> <p style="text-align:center"><b>G. FRASER</b> <b>E. SAUTTER</b> <b>W. DIXON</b></p> <p style="text-align:center">Rua da Candelaria, 28-2." andar Telephones: 3-1033-1034 4-2337-2338-3333 P. O. Box 210 Telegraphic Address "FRASER" Rio de Janeiro</p>			
<b>BUENOS AIRES</b>					
A Duarte Pereira	144				
<b>MARCH, 26.</b>					
<b>"Lima"</b>					
<b>STOCKHOLM</b>					
Theodor Wille & Cia. Ltd. ...	2.162				
Soc. Nacional Export. Ltd.	1.163				
Junqueira, Meirelles & Cia.	963				
Hard, Rand & Cia. ....	560				
Sampaio Bueno & Cia. ....	365				
Carlos B. Vasconcellos & C.	251				
Cia. Prado Chaves ...	246				
Leon Israel C." S/A ...	226				
Lima, Nogueira & Cia. ....	170				
Cia. Leme Ferreira ...	163				
E. Johnston & Cia. Ltd.	160				
Cia. Paulista de Exportação	151				
Oswaldo Ferreira & Cia. ...	143				
Almeida Prado & Cia. ....	137				
Martins, Gregory & Cia. Ltd.	69				
Naumann, Gepp & Cia. Ltd.	26				
Rebello, Alves & Cia. Ltd.	19				
Raphael Sampaio & Cia. ...	13				
Exp. Rubiac. Ltd. ....	9				
<b>GOTHENBURG</b>					
Junqueira, Meirelles & Cia.	1.196				
Theodor Wille & Cia. Ltd.	1.178				
Hard, Rand & Cia. ....	818				
Cia. Prado Chaves ...	621				
Almeida Prado & Cia. ....	593				
Lima, Nogueira & Cia. ....	319				
Martins, Gregory & Cia. Ltd.	314				
Cia. Paulista de Exportação	138				
E. Johnston & Cia. Ltd. ...	65				
Oswaldo Ferreira & Cia. ...	64				
Sampaio Bueno & Cia. ....	51				
E. Johnston & Cia. Ltd. ...	151				
Cia. Paulista de Exportação	138				
Soc. Nacional Export. Ltd.	100				
Leon Israel C." S/A ...	68				
Naumann, Gepp & Cia. Ltd.	52				
Hard, Rand & Cia. ....	25				
Junqueira, Meirelles & Cia.	13				
<b>HALMSTAD</b>					
Theodor Wille & Cia. Ltd. ...	151				
Hard, Rand & Cia. ....	151				
Martins, Gregory & Cia. Ltd.	13				
<b>NORRKOPING</b>					
Theodor Wille & Cia. Ltd.	263				
Junqueira, Meirelles & Cia.	13				
<b>ORNSKOLDSVIK</b>					
Theodor Wille & Cia. Ltd. ...	250				
<b>DANTZIG</b>					
Hard, Rand & Cia. ....	131				
<b>AMSTERDAM</b>					
Theodor Wille & Cia. Ltd. ...	13.383				
Hard, Rand & Cia. ....	4.218				
Cia. Prado Chaves ...	359				
Almeida Prado & Cia. ....	230				
E. Johnston & Cia. Ltd. ...	217				
Cia. Leme Ferreira ...	125				
Naumann, Gepp & Cia. Ltd.	120				
Lima, Nogueira & Cia. ...	106				
W. Gieseler ...	97				
Pedro Joest ...	40				
Hermann Gaih & Cia. ...	26				
Paiva, Nunes & Cia. ....	26				
Rebello, Alves & Cia. ...	25				
Cia. Paulista de Exportação	16				
Martins, Gregory & Cia. Ltd.	13				
Sampaio Bueno & Cia. ...	10				
Total ...	19.708				
<b>MARCH, 26.</b>					
<b>"Asturias"</b>					
<b>BUENOS AIRES</b>					
Nioac & Cia. Ltd. ....	275				
Soc. Mogyana Export. Ltd.	38				
Total ...	313				
<b>MARCH, 26.</b>					
<b>"Orania"</b>					

## THE BRITISH EXPORT GAZETTE.

GREAT BRITAIN'S LEADING EXPORT JOURNAL  
FOUNDED 1892

**M**ERCHANTS, IMPORTERS, and AGENTS in Brazil who are interested in the Trade of Great Britain should Subscribe regularly to this old-established and influential publication. It provides its Subscribers with the most exhaustive and exclusive commercial news service and is the connecting link between British Manufacturers and Merchants in all parts of the world.

*The Annual Subscription is 10s. or 25s. for Three Years, which includes unlimited use of its Information and Agency Departments*

**"The British Export Gazette" is invaluable to Buyers of British Goods and all who want to Represent British Firms in Brazil**  
Head Offices: 76, FINSBURY PAVEMENT, LONDON, E. C. 2.

Pinto & Cia. ....	6
<b>CONSUMPTION</b>	
Thornton & Cia. ....	6
<hr/>	
Total .....	19.020
<b>MARCH, 26.</b>	
<b>"Belvedere"</b>	
<b>GENOA</b>	
Lima, Nogueira & Cia. ....	1.084
Nossack & Cia. ....	1.052
Junqueira, Meirelles & Cia. ....	793
Peirone, Penteado & Cia. ....	775
Cia. Paulista de Exportação	400
Cia. Leme Ferreira	379
Nioac & Cia. Ltd. ....	316
Rebello, Alves & Cia. ....	302
Martins, Gregory & Cia. Ltd.	269
Almeida Prado & Cia. ....	181
Franco, Soares & Cia. ....	163
Cia. Prado Chaves	138
E. Johnston & Cia. Ltd.	102
União Mercantil B. S/A	67
Naumann, Gepp & Cia. Ltd.	65
Exp. Rubiac. Ltd. ....	51
Leon Israel C.º S/A	50
Oswaldo Ferreira & Cia. ....	43
Theodor Wille & Cia. Ltd.	28
Sampaio Bueno & Cia. ....	26
Mario Lionello	13
Assumpção, Irmão & C. Ltd.	5
Sampaio Bueno & Cia. ....	513
Naumann, Gepp & Cia. Ltd.	250
Nossack & Cia. ....	150
Cia. Paulista de Exportação	138
Leon Israel C.º S/A	138
Junqueira, Meirelles & Cia.	121
Exp. Rubiac. Ltd. ....	52
<b>LIVORNO</b>	
Nossack & Cia. ....	316
Lima, Nogueira & Cia. ....	125
Nioac & Cia. Ltd. ....	63
Cia. Leme Ferreira	26
<b>CIVITAVECCHIA</b>	
Leon Israel C.º S/A	201
Rebello, Alves & Cia. ....	13
<b>PALERMO</b>	
Martins, Gregory & Cia. Ltd.	201
Rebello, Alves & Cia. ....	6
<b>ALEXANDRIA</b>	
Leon Israel C.º S/A	138
<b>BEYROUTH</b>	
Exp. Rubiac. Ltd. ....	6
<b>CONSUMPTION</b>	
Ciro Marsili	3
<hr/>	
Total .....	8.762

<b>MARCH, 27.</b>	
<b>"Bonheur"</b>	
<b>NEW YORK</b>	
E. Johnston & Cia. Ltd. ....	4.575
Theodor Wille & Cia. Ltd. ....	3.807
Hard, Rand & Cia. ....	2.672
Cia. Leme Ferreira	1.443
Naumann, Gepp & Cia. Ltd.	250
Nossack & Cia. ....	50
<hr/>	
Total .....	12.797
<b>MARCH, 27.</b>	
<b>"General Artigas"</b>	
<b>HAMBURG</b>	
Cia. Prado Chaves	5.875
Theodor Wille & Cia. Ltd.	5.626
Exp. Café Brasil. Ltd. ....	2.632
S. A. Levy	1.674
Hard, Rand & Cia. ....	917
E. Johnston & Cia. Ltd.	625
Lima, Nogueira & Cia. ....	592
Soc. Nacional Export. Ltd.	588
Hermann Gaih & Cia. ....	500
Leon Israel C.º S/A	376
Raphael Sampaio & Cia.	310
W. Gieseler	236
Nossack & Cia. ....	150
Sampaio Bueno & Cia. ....	125
Almeida Prado & Cia. ....	125
Martins, Gregory & Cia. Ltd.	75
Oswaldo Ferreira & Cia. ....	25
Paiva, Nunes & Cia. ....	6
<b>ROTTERDAM</b>	
Theodor Wille & Cia. Ltd.	1.892
Cia. Prado Chaves	250
<b>BREMEN</b>	
W. Gieseler	250
Cia. Prado Chaves	125
Exp. Rubiac. Ltd. ....	63
Hard, Rand & Cia. ....	25
Lima, Nogueira & Cia. ....	22
<b>STETTIN</b>	
Naumann, Gepp & Cia. Ltd.	88
<b>CONSUMPTION</b>	
Bunck & Cia. Ltd. ....	3
<hr/>	
Total .....	23.175
<b>MARCH, 27.</b>	
<b>"Cuyabá"</b>	
<b>HAVRE</b>	
Cia. Cafeira de M. Geraes	300
Eugenio Pabst	225
Exp. Rubiac. Ltd. ....	100
Peirone, Penteado & Cia. ....	25
<b>ANTWERP</b>	
Lima, Nogueira & Cia. ....	246
Peirone, Penteado & Cia. ....	26

Junqueira, Meirelles & Cia. ....	13
<hr/>	
Total .....	935
<b>MARCH, 27.</b>	
<b>"Jaboatão"</b>	
<b>NEW ORLEANS</b>	
Hard, Rand & Cia. ....	1.125
Zander & Cia. Ltd. ....	875
Theodor Wille & Cia. Ltd.	750
Elias Elbas	125
Sampaio Bueno & Cia. ....	50
<b>HOUSTON</b>	
Hard, Rand & Cia. ....	250
Theodor Wille & Cia. Ltd.	125
Elias Elbas	13
<hr/>	
Total .....	3.313
<b>MARCH, 27.</b>	
<b>"Capillo"</b>	
<b>BOSTON</b>	
Theodor Wille & Cia. Ltd.	2.000
Hard, Rand & Cia. ....	1.250
Arbuckle & Cia. ....	1.200
E. Johnston & Cia. Ltd.	500
American Coffee Corp. ....	500
Sampaio Bueno & Cia. ....	500
Naumann, Gepp & Cia. Ltd.	350
Soc. Nacional Export. Ltd.	250
Nossack & Cia. ....	250
<b>PHILADELPHIA</b>	
Theodor Wille & Cia. Ltd.	737
Hard, Rand & Cia. ....	500
Martins, Gregory & Cia. Ltd.	500
Pinto & Cia. ....	500
Soc. Mogyana Export. Ltd.	500
Sampaio Bueno & Cia. ....	375
Cia. Prado Chaves	250
Arbuckle & Cia. ....	250
Almeida Prado & Cia. ....	35
<b>NEW YORK</b>	
Theodor Wille & Cia. Ltd.	1.500
Cia. Prado Chaves	1.500
Soc. Nacional Export. Ltd.	500
Ramos, Silva & Cia. ....	250
<hr/>	
Total .....	14.197
<b>MARCH, 27.</b>	
<b>"Paraguayo"</b>	
<b>NEW YORK</b>	
Hard, Rand & Cia. ....	8.375
American Coffee Corp. ....	7.000
Theodor Wille & Cia. Ltd.	4.250
Almeida Prado & Cia. ....	2.140
Martins, Gregory & Cia. Ltd.	525
S. A. Levy	500
Nossack & Cia. ....	250
Sampaio Bueno & Cia. ....	250

## The City of Santos Improvements Company, Limited

ESTADO DE SÃO PAULO — CAIXA, 4 — SANTOS

**GAS DEPARTMENT.** Special coke and tar produced by the continuous carbonization process. Also soft pitch for waterproofing purposes, crude benzol and oils for the manufacture of disinfectants.

**WATER DEPARTMENT.** — Distribution on the constant supply system. Special cheap rates for industrial supplies. Ships supplied with water of guaranteed purity, at the rate of 150 tons per hour if required.

**ELECTRICITY DEPARTMENT.** — Installations of any magnitude for Light and Power. Cheap power for longhour consumers. Motor repairs.

**TRAMWAYS DEPARTMENT.** — Seventy kilometres of rapid electric service. Season tickets with non-stop service. Special terms for large parties, parcel delivery; service to all points. Electric transport of goods and building material at cheap rates. Goods from interior should be despatched "Companhia City Desvio Saboc".

**MOTOR OMNIBUS SERVICES:** Town Avenues and Beach.  
Telegraphic Address "CIDADE" — Santos

Lima, Nogueira & Cia. ....	250
Vidal & Cia. ....	100
<b>BALTIMORE</b>	
Arbuckle & Cia. ....	250
<b>NORFOLK</b>	
Ramos, Silva & Cia. ....	250
Total .....	24.140
<b>MARCH, 28.</b>	
<b>"Indier"</b>	
<b>ANTWERP</b>	
Hard, Rand & Cia. ....	4.956
Theodor Wille & Cia. Ltd. . .	1.524
E. Johnston & Cia. Ltd. . . .	1.319
Cia. Leme Ferreira . . . . .	1.130
Naumann, Gepp & Cia. Ltd. .	733
Fed. Paulista Coop. Café . . .	625
Exp. Rubiac. Ltd. . . . .	301
Nioac & Cia. Ltd. . . . .	301
Martins, Gregory & Cia. Ltd. .	259
Exp. Café Brasil. Ltd. . . . .	250
Leon Israel C." S/A . . . . .	152
Nossack & Cia. . . . .	145
Almeida Prado & Cia. . . . .	132
Soc. Mogyana Export. Ltd. . . .	125
Sampaio Bueno & Cia. . . . .	52
A. Sion & Cia. . . . .	38
Pinto & Cia. . . . .	19
Cia. Prado Chaves . . . . .	13
Rebello, Alves & Cia. . . . .	13
Total .....	12.087
<b>MARCH, 28.</b>	
<b>"Patricia"</b>	
<b>HOUSTON</b>	
Theodor Wille & Cia. Ltd. . . .	11.450
Ramos, Silva & Cia. . . . .	250
Hard, Rand & Cia. . . . .	50
<b>NEW ORLEANS</b>	
Theodor Wille & Cia. Ltd. . . .	9.410
Hard, Rand & Cia. . . . .	565
Ramos, Silva & Cia. . . . .	250
Nossack & Cia. . . . .	48
Total .....	22.023
<b>MARCH, 28.</b>	
<b>"Southern Cross"</b>	
<b>NEW YORK</b>	
Theodor Wille & Cia. Ltd. . . .	4.043
Hard, Rand & Cia. . . . .	1.500
Exp. Café Brasil. Ltd. . . . .	1.017
Mc. Laughlin & Cia. . . . .	500
Martins, Gregory & Cia. Ltd. . .	410
Rebello, Alves & Cia. . . . .	125
Total .....	7.595
<b>MARCH, 28.</b>	
<b>"Equator"</b>	
<b>HELSINKI</b>	
Cia. Paulista de Exportação . . .	544
Leon Israel C." S/A . . . . .	500
Sampaio Bueno & Cia. . . . .	276
Theodor Wille & Cia. Ltd. . . .	105
<b>TURKU</b>	
Naumann, Gepp & Cia. Ltd. . . .	183
<b>WIBORG</b>	
Naumann, Gepp & Cia. Ltd. . . .	60
Leon Israel C." S/A . . . . .	6
Cia. Paulista de Exportação . . .	5
<b>DANTZIG</b>	
Exp. Rubiac. Ltd. . . . .	12
Theodor Wille & Cia. Ltd. . . .	6
Cia. Paulista de Exportação . . .	6

<b>GDYNIA</b>	
Almeida Prado & Cia. ....	6
<b>MANTYLUOTO</b>	
Naumann, Gepp & Cia. Ltd. . . .	5
Total .....	1.719
<b>MARCH, 28.</b>	
<b>"Africa Maru"</b>	
<b>CAPE TOWN</b>	
Cia. Leme Ferreira . . . . .	25
<b>MARCH, 29.</b>	
<b>"Rigel"</b>	
<b>S. FRANCISCO DA CALIFORNIA</b>	
Hard, Rand & Cia. . . . .	4.000
E. Johnston & Cia. Ltd. . . . .	750
Naumann, Gepp & Cia. Ltd. . . .	450
Theodor Wille & Cia. Ltd. . . . .	400
Silva, Ferreira & Cia. . . . .	324
<b>SAN PEDRO</b>	
American Coffee Corp. . . . .	1.000
Hard, Rand & Cia. . . . .	250
Exp. Café Brasil. Ltd. . . . .	250
<b>SEATTLE</b>	
Theodor Wille & Cia. Ltd. . . . .	800
Naumann, Gepp & Cia. Ltd. . . .	275
Lima, Nogueira & Cia. . . . .	250
<b>VANCOUVER</b>	
Theodor Wille & Cia. Ltd. . . . .	500
E. Johnston & Cia. Ltd. . . . .	360
Hard, Rand & Cia. . . . .	45
<b>PORTLAND</b>	
Hard, Rand & Cia. . . . .	500
Theodor Wille & Cia. Ltd. . . . .	300
Total .....	10.454
<b>MARCH, 29.</b>	
<b>"Delvalle"</b>	
<b>NEW ORLEANS</b>	
Hard, Rand & Cia. . . . .	5.625
Cia. Leme Ferreira . . . . .	3.215
Almeida Prado & Cia. . . . .	2.200
Cia. Prado Chaves . . . . .	1.500
Arbuckle & Cia. . . . .	1.300
Martins, Gregory & Cia. Ltd. . . .	1.070
S. A. Levy . . . . .	1.000
Pinto & Cia. . . . .	1.000
Theodor Wille & Cia. Ltd. . . . .	1.000
Leon Israel C." S/A . . . . .	1.000
Lima, Nogueira & Cia. . . . .	1.000
Silva, Ferreira & Cia. . . . .	500
Soc. Nacional Export. Ltd. . . . .	376
E. Johnston & Cia. Ltd. . . . .	250
Sampaio Bueno & Cia. . . . .	250
<b>HOUSTON</b>	
Cia. Leme Ferreira . . . . .	125
Total .....	21.411
<b>MARCH, 29.</b>	
<b>"Borga"</b>	
<b>OSLO</b>	
Theodor Wille & Cia. Ltd. . . . .	454
A. Sion & Cia. . . . .	125
Martins, Gregory & Cia. Ltd. . . .	6

<b>BERGEN</b>	
Theodor Wille & Cia. Ltd. . . . .	139
<b>HELSINKI</b>	
Cia. Paulista de Exportação . . . .	125
<b>TRONDHJEM</b>	
Theodor Wille & Cia. Ltd. . . . .	5
<b>CHRISTIANSAND</b>	
Theodor Wille & Cia. Ltd. . . . .	5
Total .....	859
<b>MARCH, 29.</b>	
<b>"Somme"</b>	
<b>HAVRE</b>	
Naumann, Gepp & Cia. Ltd. . . . .	3.000
E. Johnston & Cia. Ltd. . . . .	2.027
Pedro Joest . . . . .	1.015
D. Ferreira . . . . .	1.000
Hadjes & Cia. Ltd. . . . .	500
Lima, Nogueira & Cia. . . . .	500
Nossack & Cia. . . . .	250
Franco, Soares & Cia. . . . .	225
L. G. Ribeiro Santos . . . . .	225
Cia. Prado Chaves . . . . .	201
Martins, Gregory & Cia. Ltd. . . .	164
Leon Israel C." S/A . . . . .	62
<b>NANTES</b>	
E. Johnston & Cia. Ltd. . . . .	275
<b>ANTWERP</b>	
Hermann Gaih & Cia. . . . .	125
<b>LONDRES</b>	
Hermann Gaih & Cia. . . . .	50
<b>DUNKERQUE</b>	
L. G. Ribeiro Santos . . . . .	25
<b>ST. NAZAIRE</b>	
Nossack & Cia. . . . .	13
Total .....	9.657
Total Overseas . . . . .	237.763
<b>COASTWISE</b>	
<b>MARCH, 20.</b>	
<b>"Bocaina"</b>	
<b>RIO DE JANEIRO</b>	
Departamento Nac. do Café . . . .	5.000
Total Coastwise . . . . .	5.000
<b>FRUIT</b>	
<b>CONFIRMATION OF SANTOS</b>	
<b>FRUIT CLEARANCES DURING</b>	
<b>WEEK ENDING 7TH APRIL 1934</b>	
<b>BANANAS IN BUNCHES</b>	
<b>MARCH, 31st.</b>	
<b>"Duquesa"</b>	
London . . . . .	4.000
<b>APRIL, 2nd.</b>	
<b>"Andalucia Star"</b>	
6 London . . . . .	29.947

SUGAR AND COTTON QUOTATIONS

RIO DE JANEIRO, 7th. Aril, 1934

COTTON SERVICE

Liverpool 12, 30 P. M.		2	3	4	5	6	7
Pernambuco Maceló fair spot		Holiday	6.06	6.01	6.09	6.05	6.05
American Middling spot		"	6.41	6.36	6.44	6.40	6.40
American futures	May	"	6.11	6.06	6.12	6.10	6.09
	July	"	6.08	6.03	6.09	6.07	6.07
	October	"	6.06	6.01	6.07	6.04	6.04
	January	"	6.06	6.01	6.06	6.04	6.03
New York American Middling Uplands		12.15	12.20	12.25	12.20	12.30	12.25
New York futures	May	11.94	11.99	12.05	11.98	12.09	12.05
	July	12.05	12.11	12.18	12.10	12.18	12.14
	October	12.20	12.26	12.32	12.24	12.28	12.26
	January	12.35	12.42	12.47	12.40	12.42	12.44

SUGAR SERVICE

New York futures	May	1.54	1.49	1.50	1.47	1.41	1.40
	July	1.59	1.56	1.56	1.54	1.48	1.46
	September	1.63	1.60	1.61	1.58	1.53	1.52
	December	1.68	1.66	1.66	1.64	1.59	1.57
London futures	March	Holiday					
	May	"	4/8	4/7 1/2	4/6 1/2	4/5 1/4	4/4 1/4
	August	"	5/1 1/2	5/1 1/4	5/0 3/4	4/9	4/8 1/2
	September	"	5/0 1/4	5/-	4/11 1/4	4/9 3/4	4/9
	October	---	5/0 3/4	5/0 1/2	5/-	5 0 1/2	4/9 1/4

RUBBER SERVICE

Upriver Fine	13 1/4	13 1/2	13 1/2	13 1/2	13 3/4	13 3/4
Smoked Sheets	11 1/2	11 1/4	11 3/8	11 3/8	11 7/8	11 7/8
Market	Steady	Steady	Steady	Steady	Firm	Firm

Cotton

The Pernambuco Market closed on April 7th 1934 with first sorts quoted at 41\$000 buyers, against 45\$000 buyers on the previous saturday and 68\$000 on April 1st last year.

The movement at Pernambuco for the week ended April 7th 1934, was as follows, in bales of 60 kilos:

Stock on Mar. 31st 1934	33.900
Entries during week ended April 7th 1934	4.700

Available	38.600
Deliveries during same week	5.300

Stock on 7th April 1934	33.300
Ditto on 8th April 1933	7.200

For the crop to date entries amounted to 170.300 bales against 80.800 bales during the same period last crop.

The Rio Market, closed on 7th April 1934, with prices quoted as follows, per 10 kilos:

	April 7-31	Mar. 31-31
Seridó 3x1	11\$000—10\$000	41\$000—10\$000
Sertões 3x5	38\$500—36\$000	38\$000—36\$000
Matta 3x5	35\$000—33\$000	35\$000—33\$000
Paulista 3x5	36\$000—33\$000	36\$000—33\$000

The movement to Rio de Janeiro for the week ended April 7th 1934 was follows:

Stock on Mar 31st 1934	3.944
------------------------	-------

Entries during week ended April 7th 1934	2.870
Available	6.814
Deliveries during same week	1.690
Stock on April 7th 1934	5.121
Ditto 8th April 1933	28.729

INTERESTING TO ADVERTISERS

WILEMANS' BRAZILIAN REVIEW, the only Journal of its kind in South-America, circulates in 31 different countries of the World and in 123 key-cities and Towns:

31 in Brazil	4 in France
17 in U. S. A.	3 in Holland
14 in the United Kingdom	2 in Switzerland
	2 in South-Africa
7 in Sweden	2 in Argentina
6 in Finland	2 in Belgium
6 in Germany	2 in Egypt
4 in Italy	3 in Denmark
4 in Norway	3 in Venezuela
4 in Japan	

and 1 each in Uruguay, Guatemala, Chile, Perú, Salvador, Austria, Czechoslovakia, Latvia, Rumania, Australia, Java, India, Turkey and Dutch East Indies.

No words are needed to illustrate the productive possibilities of advertising the columns of

WILEMAN'S BRAZILIAN REVIEW.  
ADVERTISE & BENEFIT YOURSELF

# Sugar Rubber

The Pernambuco market closed on 7th April 1931 with all quotations nominal, unaltered as compared with the previous Saturday.

The movement at Pernambuco for the week ended 7th April 1931 was as follows, in bags of 60 kilos:

	<i>Bags</i>
Stock on 31st March 1931 .....	1.188.400
Entries during week ended 7th April 1931 .....	27.400
Available .....	1.215.800
Deliveries during same week .....	104.300
Stock on 7th April 1931 .....	1.111.500
Do on April 8th 1933 .....	498.600

For the crop to date entries amounted to 3.356.300 bags as against 3.562.000 bags for the same period last crop.

The Rio Market closed on 7th April 1931 with prices quoted as follows per 60 kilos, crystals 50\$000 to 51\$000, demerara 14\$500 to 15\$500 and mascavo 34\$000 to 35\$000.

The movement at Rio for the week ended 7th April 1931, was as follows in bags:

	<i>Bags</i>
Stock on 31st Mar. 1931 .....	76.798
Entries during week ended April 7th 1931 .....	42.889
Available .....	119.687
Deliveries during same week .....	22.261
Stock on April 7th 1931 .....	97.426
Ditto, April 8th 1933 .....	187.033

## SHIPPING

### FURNESS PRINCE LINE

**Houlder Brothers & Co.**  
(Brazil) Ltd. Agents)

- M/S "Eastern Prince" — leaves Rio 19th April for Trinidad and New York.
- M/S "Northern Prince" — due Rio de Janeiro from New York 20th April, sails for Santos, Montevideo and Buenos Aires.
- M/S "Northern Prince" — leaves Rio 3rd May for Trinidad and New York.
- M/S "Southern Prince" — due Rio de Janeiro from New York 4th May, sails for Santos, Montevideo and Buenos Aires.
- M/S "Southern Prince" — leaves Rio 17th May for Trinidad and New York.
- M/S "Eastern Prince" — due Rio de Janeiro from New York 18th May, sails for Santos, Montevideo and Buenos Aires.

### MUNSON STEAMSHIP LINES Federal Express Co. — Gal. Agents Passengers steamers:—

- "American Legion" — sailed Buenos Aires April 7th, due Santos Apr. 10th, sails April 11th, arrive & sails Rio April 12th. Due Trinidad April 20th, Bermuda April 24th, New York April 26th.
- "Western World" — sailed New York April 1st, Bermuda 3rd. Due Rio April 14th, Santos April 15th, Montevideo April 18th, Buenos Aires April 19th.
- "Southern Cross" — due New York April 12th, sails April 14th. Due Bermuda April 16th, arrive & sails Rio April 27th, Santos Apr. 28th Monte May 1st, and Buenos Aires May 2nd.

### MC CORMICK STEAMSHIP Co. (P. A. B. LINE)

- Federal Express Co. — Gal. Agents
- "West Nilus" — sailed Buenos Aires March 24th, Montevideo March 25th, Santos March 31st, Rio April 2nd, Bahia April 6th. Off Pará April 13th, thence Tri-

The Movement of Rubber in the port of Pará during the week ended April 7th 1931, was as follows:

Stock on 31st Mar. 1931 .....	2,878.012
Entries for the week ended April 7th 1931 .....	201.161
Available .....	3.079.173
Clearances during week:	
To Europe .....	89.935
To the U. S. ....	33.660
To other ports .....	123.595
Total for the week .....	123.595
Stock on 7th April 1931 .....	2.955.578

Spot Rubber was quoted at Pará on 7th April 1931 as follows, per kilo:

Island Fine .....	2\$000
Sernamby Island .....	1\$900
Sertão Fine .....	\$500
Sernamby Sertão .....	\$300
Caucho Rall .....	\$800

### WANTED TO PURCHASE

Advertiser wishes to acquire an interest in a daily paper or weekly or monthly Journal. Ceylon or British East Africa for preference. Has journalistic interests now.

All particulars to

"A. B. C."

c/o Wileman's Brazilian Review.

P. O. Box 809.

Rio de Janeiro — Brasil.

nidad, Colombia & U. S. Pacific ports.

"Hollywood" — sailed Los Angeles March 2nd. Due Rio April 14th, Santos April 16th, Montevideo 20th, Buenos Aires 21st.

"W. Mahwah" — sails Buenos Aires April 21st, Montevideo April 23rd. Due Santos April 27th, sails 28th, arrives and sails Rio April 30th. Due Bahia May 3rd. Off Pará May 9th, thence Trinidad, Colombia, Panamá & U. S. Pacific ports.

**ITALMAR — Rio de Janeiro — Movement of Vessels on April 2nd, 1934.**

"Augustus" — Sailed from Genoa March 28 last, due Rio 9 April. will omit Dakar & Las Palmas.

"Conte Grande" — In port at Genoa, will sail bound to South-America May 10th.

"Conte Biancamano" — Sailed from Dakar to Barcelona April 6th.

"Neptunia" — Sailed from Trieste April 6th, for S. A.

"Oceania" — Arrived Trieste April 6th, will sail April 26th to S. A.

**Serviço Internacional de Viagens**  
**G. Bernstorff**

Official Agents of all Steamship & Air Lines

General Passenger Agents for Brazil of the:

**"DELTA LINE"**

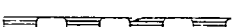
(MISSISSIPPI SHIPPING CO., Inc.)  
NEW ORLEANS, U. S. A.

Rio de Janeiro

Head office:

Rua General Camara, 32-Loja 

Cables: Berngrafen, Rio

Telephones: } 3-1454 

3-1455

3-1137



São Paulo

Branchoffice:

Rua Libero Badaró, 52 - Loja

Cables: Berngrafen, São Paulo

Telephone: 2-7417

**COMPANHIA AMERICANA DE SEGUROS**

ESTABLISHED IN 1918

DIRECTORS:

Dr. Erasmo T. de Assumpção

Dr. Noé Ribeiro

Dr. Anesio Augusto do Amaral

Frank C. Toogood



HEAD OFFICE:

Rua 15 de Novembro, 29 - 1st floor

SÃO PAULO

Telephones: 2-1217 e 2-1132

Capital-Fully paid up . . . . . Rs. 2.500:000\$090

Losses paid . . . . . Rs. 22.146:145\$853

Reserves . . . . . Rs. 2.591:796\$136

**Fire - Marine - Transit - Plate Glass**

RIO BRANCH:

Rua da Quitanda, n.º 153 — 1st Floor

P. O. Box N. 959 — Telephone 4-2963

— R I O D E J A N E I R O —

Bunkering Contractors for Foreign Depots and United Kingdom Coal Shipping Ports.  
Brokers for Sale and Purchase.

Chartering Coal Exporters. Steamship Agents Oil Fuel. Insurance

**Lambert Brothers, Limited**

85, GRACECHURCH STREET, LONDON, E. C. 3.

Telegrams: LAMBERT. STOCK. LONDON

ALSO AT

Cardiff, The Exchange . . . . .	Te'grams:	Glasgow, 78, St. Vincent Street . . . . .	Te'grams:
Newport, Mon., 69 Dock Street . . . . .	"LAMBERT"	Methil, 82, East High Street . . . . .	"LAMBERT"
Port Talbot, Exchange Buildings . . . . .		Burntisland, 20, High Street . . . . .	
Newcastle-on-Tyne, Exchange Buildings . . . . .	"LAMBROS"		
Tyne Dock, 67, Hudson Street . . . . .	NEWCASTLE	Hull, Prudential Buildings . . . . .	"LAMBROS"
Blyth, 19, Ridley Street . . . . .		Grimbsby, 9, Cleethorpe Road . . . . .	"LAMBROS"
West Hartepool, Victoria Terrace . . . . .	"LAMBERT"	Immingham, Dock Offices . . . . .	GRIMSBY

Agents for:

NEW YORK: Lambert Brothers, Inc., 17 State Street. — BILBAO: (Spain) Lambert Brothers, Sociedad Limitada. Apartado 154, Etación 5. — PARIS: Société Anonyme Lambert Frères Charbons et Minerais, 29, Avenue de l'Opera.

**DAVID & WM. HENDERSON**  
AND COMPANY, LIMITED

**Shipbuilders, Engineers & Repairers**

BUILDING BERTHS  
UP TO 600 FT.

**GLASGOW**

PRIVATE GRAVING DOCK  
500' X 62'

Telegraphic Address: Meddosi, Glasgow

# THE CALORIC COMPANY

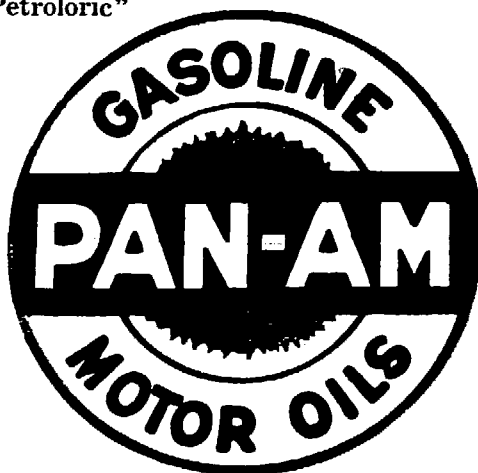
**RIO DE JANEIRO**

Praça Mauá, 7 — Edifício d'“A Noite” — 12.º andar

P. O. Box 1965

Telegraphic Address: “Petroloric”

Telephone 3-5860



**Fuel Oil**  
For industries,  
Railways, Steamers

**Diesel Oil**  
For internal  
Combustion Engines

Fuel Oil Stations at:

**PARÁ, PERNAMBUCO, BAHIA AND SANTOS**

## LAMPOR T & HOLT LINE BRAZIL SERVICE

FROM GLASGOW AND LIVERPOOL to: Bahia, Rio de Janeiro, Santos, Rio Grande do Sul, Pelotas & Porto Alegre. From New York and South Atlantic Ports to Brazil and the River Plate

SAILINGS	From Glasgow	From Liverpool	From New York	Due Rio	Due Santos
NASMYTH	17th Mar.	24th Mar.	—	14th Apr.	16th Apr.
LINNELL	7th April	14 th Apr.	—	5th May	7th May
DELAMBRE	5th May	12th May.	—	2nd June	4th June
BRONTE	9th June	16th June	—	7th July	9th July

### HOMeward SAILINGS

BALZAC . . . . . leaves Rio about 23rd. April for Liverpool.  
BRONTE . . . . . leaves Santos about 20th April Rio 21st April for Liverpool.  
BIELA . . . . . " Rio about 22nd May for Liverpool.

Cargo taken on through Bills of Lading, via Rio de Janeiro, to Aracajú, Victoria, Antonina, Paranaguá, São Francisco and Santa Catharina. All steamers, outwards and homewards, have accomodation available for Saloon Passengers at economic rates.

Apply to:—

Santos:  
F. S. HAMPSHIRE & Co. Ltd.  
Bahia:  
F. STEVENSON & Co., Ltd.  
Pernambuco:  
WILLIAMS & Co.

**LAMPOR T & HOLT, LTD.**  
**RIO DE JANEIRO**  
AV. RIO BRANCO, 46-4.º and.  
Tels. 3-4830 e 3-0085

S. Paulo:  
F. S. HAMPSHIRE & Co. Ltd.  
Buenos Aires:  
LAMPOR T & HOLT, Ltd.  
Montevideo:  
M. REAL AZUA.